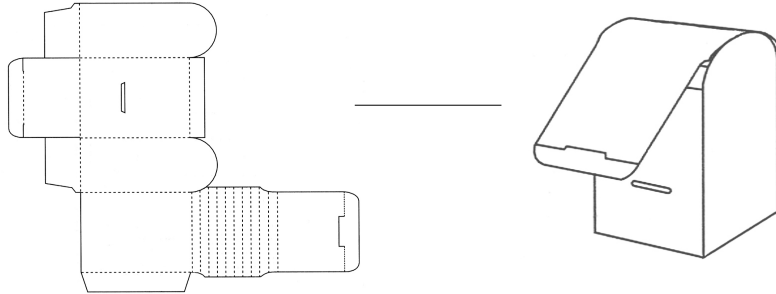


WHAT ARE CURVES?

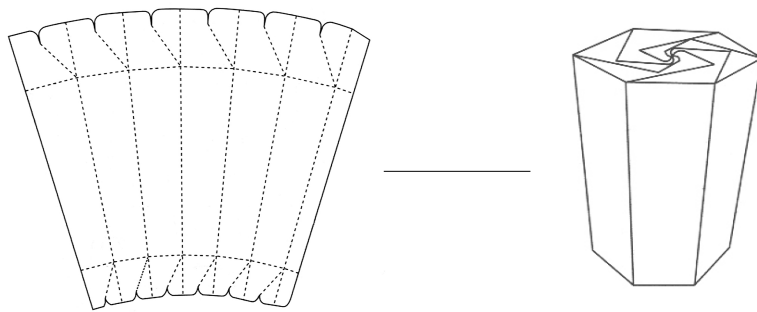
Curves are a way of shaping two-dimensional cardboard planes into interesting and functional structures. Here are 4 most common ways to curve cardboard: Bend Curve, Swirl Curve, Side Curve, and Edge Curve.

———— Cutting line
..... Folding line

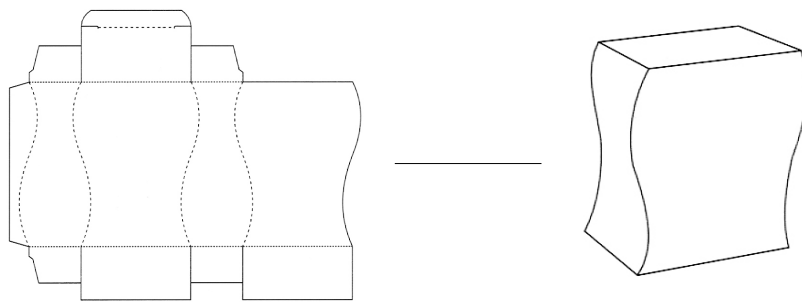
1. Bend Curve



2. Swirl Curve



3. Side Curve



4. Edge Curve

