

**GROUP B-2: PLUS | MINUS 加 | 減**

曾繁荣 NATHAN TSENG  
沈舟静 ZHOUJING SHEN  
谢文琪 WENQI XIE  
刘苗 MIAOLIAO  
王雅琳 YALING WANG  
朱晓坤 XIAOKUN ZHU  
庞金剑 JINJIAN PANG

2009. 7. 14

## Goals 目标

- **Develop Taoping as a center for organic farming and slow movement tourism**
- 将桃坪发展为一个有机农业和生态旅游相结合的中心
- **Improve living conditions for villagers to encourage them to stay.**
- 改善村民的生活环境以鼓励他们继续在桃坪生产和生活
- **Retain Taoping's historic character**
- 保持桃坪丰富的历史特征

## Principles 原则

- - **Historic preservation** 历史保护
- - **Sustainable physical and economic development** 可持续空间发展和经济发展



# 卫生 Sanitation

---



- 水处理中心：饮用水、污水处理
- 垃圾收集、处理系统
- Drinking water & waste water treatment
- Waste Collection system



- 适度分离人居和动物饲养环境
- 垃圾清理、河道清理
- Separate animal & human living areas at an appropriate
- Remove trash from rivers & other water systems

# 能源 Energy

---



- 小型水电中心（磨坊改建）
- 沼气恢复使用
- 太阳能（热水、小型照明）系统
- 整体照明系统的建立

- Micro hydroelectric dam in mill(adaptive reuse)
- Rebuild biogas system
- Solar energy for water heating & small scale lighting
- Lighting system for old village



- 减少低效率能源（木材）的使用
- 减少单体建筑耗能

- Reduce energy usage
- Used less unrenewable sources of energy (e.g. firewood)



# 风貌 Image

---



- 整体风貌控制：色彩、材料、建筑高度
- 标识指示系统的建立
- 传统建筑的保护、维修与重建

- Unified color, material, height restrictions for buildings
- Unified signage throughout Taoping
- Preservation of traditional, vernacular architecture & renovation of buildings affected by earthquake



- 管线、设备隐藏
- 不协调设施的清除
- Cover/bury modern fixtures (e.g. pipes)
- Remove exterior/interior fixtures incompatible with the historical architecture

# 生态 Ecology

---



- 建立生态廊道
- 加强生态管理：植被恢复、封山育林等、物种保护
- 有机农场的建立

- Create an ecological corridor
- Improve ecological management: vegetation recovery, off-limits area to mountains, species protection
- Green/organic farming



- 废墟清理
- 限制非渗透性铺装使用
- 限制水坝的修建
- 减少水岸硬质材料的使用

- Remove construction debris
- Limit use of impervious surfaces
- Limit construction of dams on Zagunao River
- Recover soft bank of river



# 场所 Space

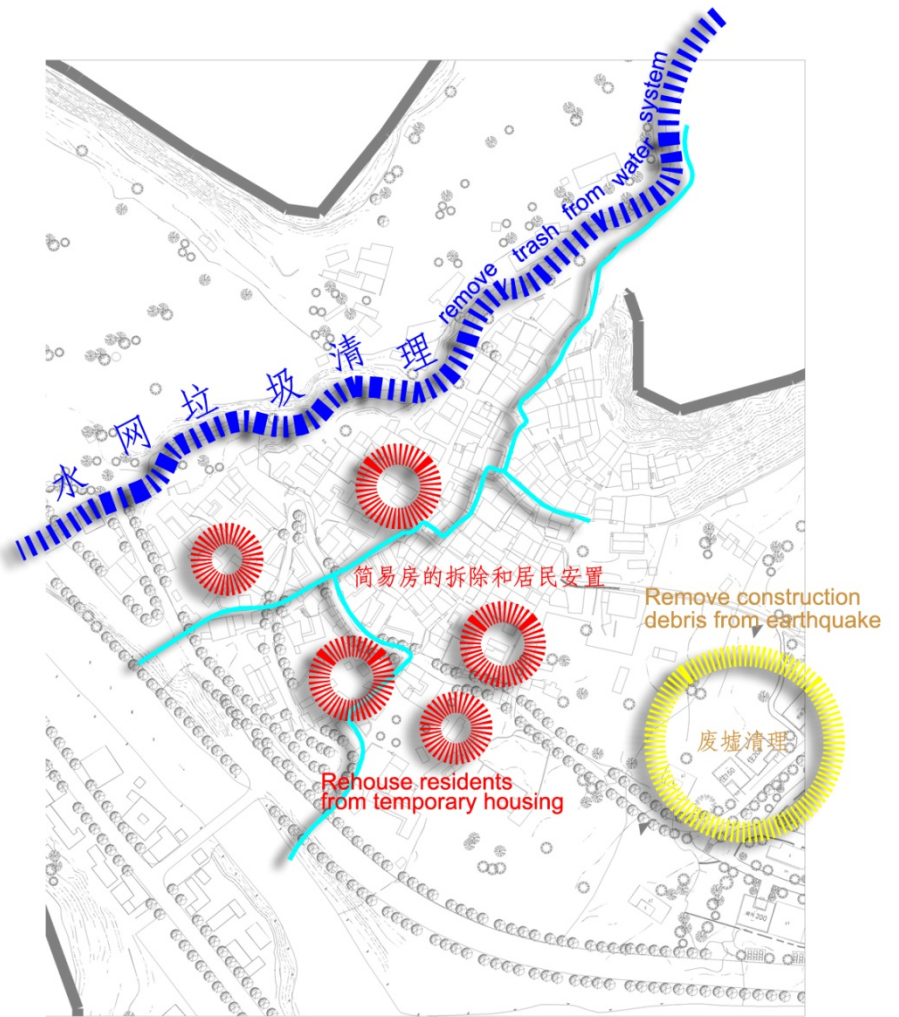
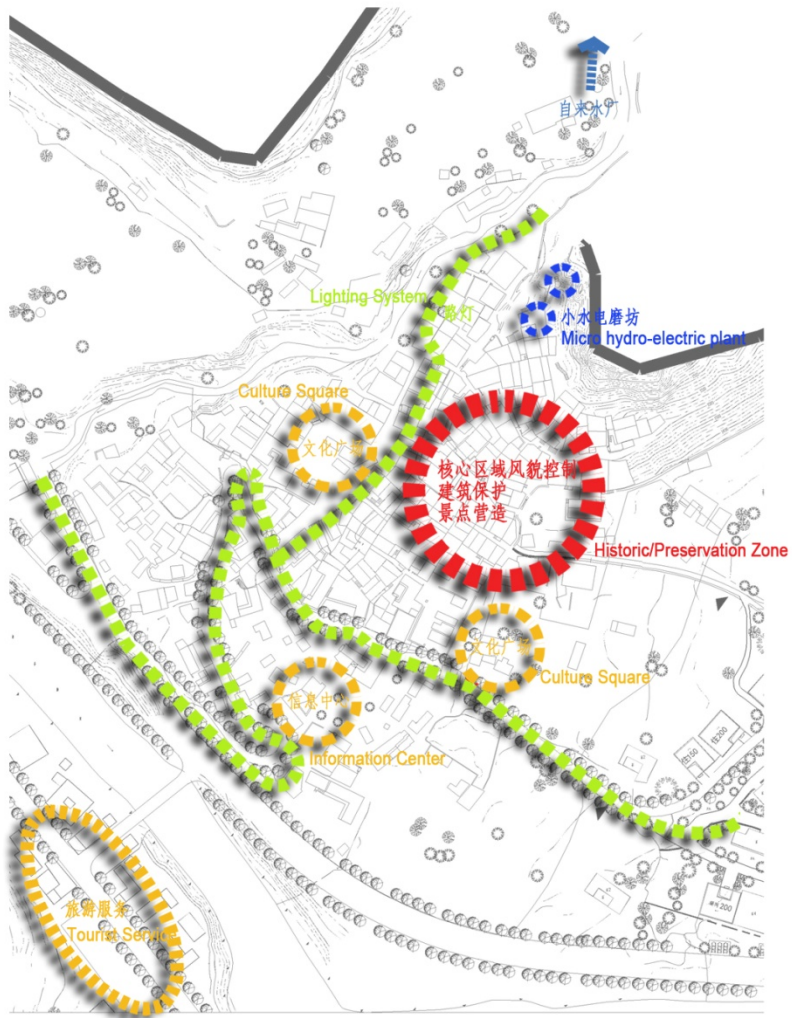
---



- 集市的营造
- 原文化广场等公共空间的恢复
- 核心景点的恢复和营造
- Create a farmer'market
- Improve public space
- Recover tourist sites in old village



- 震后临时建筑的拆除、安置
- Rehouse residents living in tents





river bank 生态河岸

debris from earthquake - memorial site  
建筑废墟堆积山——纪念性景观

preserved new village gate 保留寨门

water channel 水渠

organic farm 有机农场

farm road 农场道路

waste water treatment plant 污水处理厂

culture square 文化广场

information center 信息中心

watchtower 碉楼

reserve for future use 预留建设用地

水渠

有机农场

水渠

有机农场

有机农场

核心保护区

文化广场

保留民居

曾头沟

有机农场

水渠

有机农场

水渠

有机农场

有机农场

核心保护区

文化广场

保留民居

曾头沟

有机农场





## Design guidelines 设计准则

### Historic Zone 历史保护区域

- Rebuilt earthquake damaged buildings using historical construction methods
- 使用传统手法重建地震损坏建筑
- Modern fixtures allowed only if they do not radically alter building fabric
- 只有在不改变或破坏原有建筑肌理的情况下，现代设备可以被允许安装
- Fluorescent lights placed in passageways to aid pedestrian movement and improve safety
- 通道安装可调节照明系统，提高安全性，又可在关闭情况下体验原状巷道空间
- Bilingual (English/Chinese) signage placed throughout the zone
- 区域内双语标识系统的建立
- No alternations/modern additions can be made without approval
- 任何改装或者现代设施的加建都必须经过批准



## Design guidelines 设计准则

### Riverfront 河岸

- Pervious material must be used for the new riverfront trail
- 河岸栈道的建设尽可能使用回收材料
- Riverfront trail must be set back from existing residences by 15 m. The river may be diverted through a series of water wheels in order to allow this.
- 因水车等景观设施的建设，栈道离现存建筑需保持15米的距离
- Trail shaded by trees
- 栈道边植树，夏季提供树荫

## Design guidelines 设计准则

### Agricultural Zone 农业发展区

- No buildings may be constructed unless used for agricultural purposes
- 除了农业相关用途的构筑物之外，不能在此区域内修建建筑
- All existing buildings/pavement must be demolished and land returned to agricultural use
- 所有建筑废弃物和硬质铺装必须被逐步清理，以合适的办法在短期内植被可以存活，长期目标为可以复垦

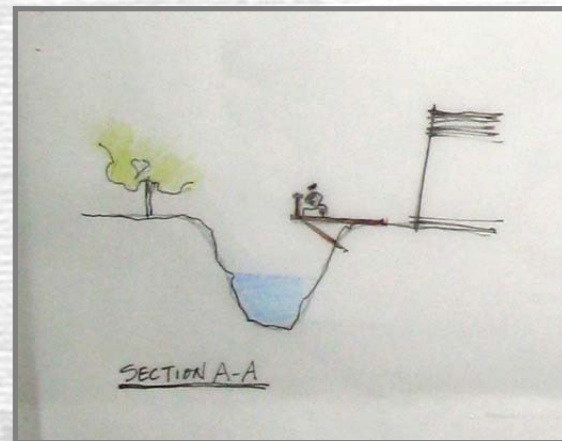
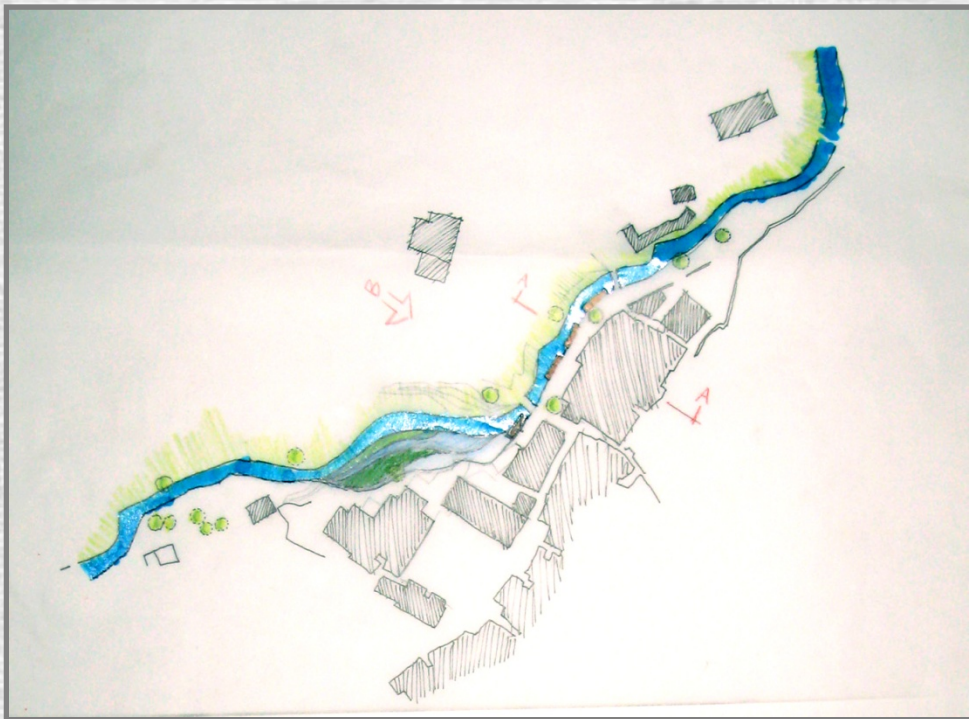


# Design guidelines 设计准则

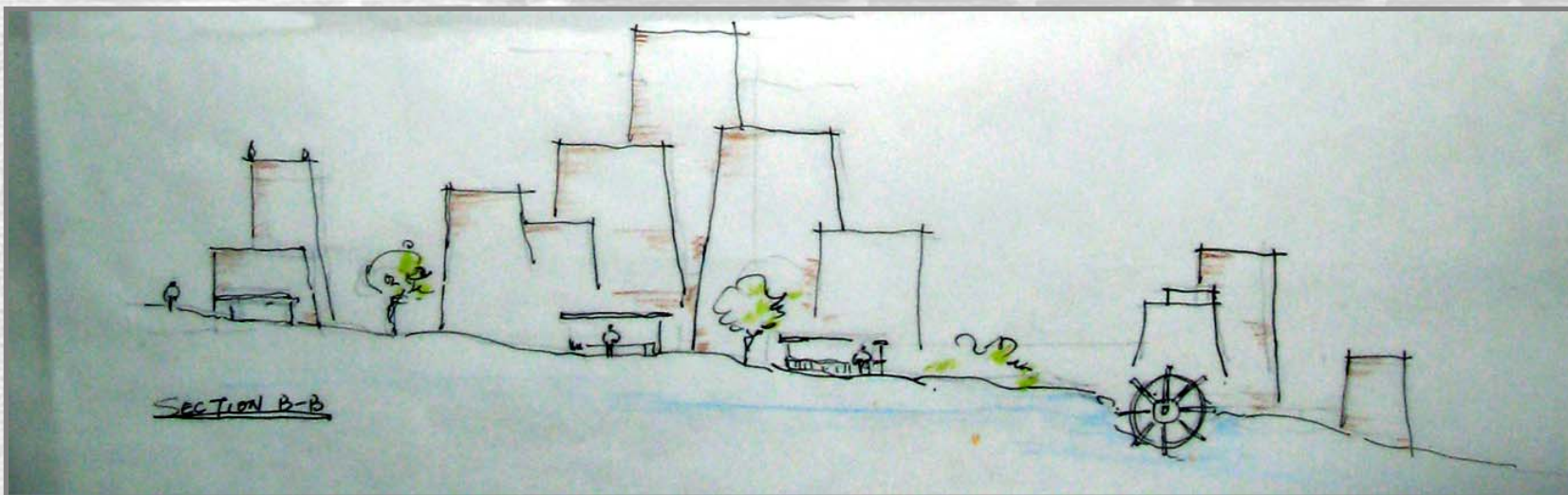
All of Taoping 整个桃坪区域

- No building maybe taller than the average building in the historic zone.
- 建筑高度不能超过历史核心区域的平均高度
- Use of renewable energy such as solar power for heating
- 开发利用可再生能源如太阳能加热热水
- Segregation of human and animal habitat within a household
- 在单户区域内适当分离居民生活空间和家畜饲养空间
- All buildings must be connected to a wastewater treatment system if it exists
- 污水收集、处理网络的建立与完善
- Materials used in all buildings must conform to historical building stock in Taoping. All new construction must be of this type and existing buildings that do not conform must be converted.
- 新建筑所使用的材料必须和历史建筑相协调统一，所有现存的建筑如有不和谐的必须经过改造

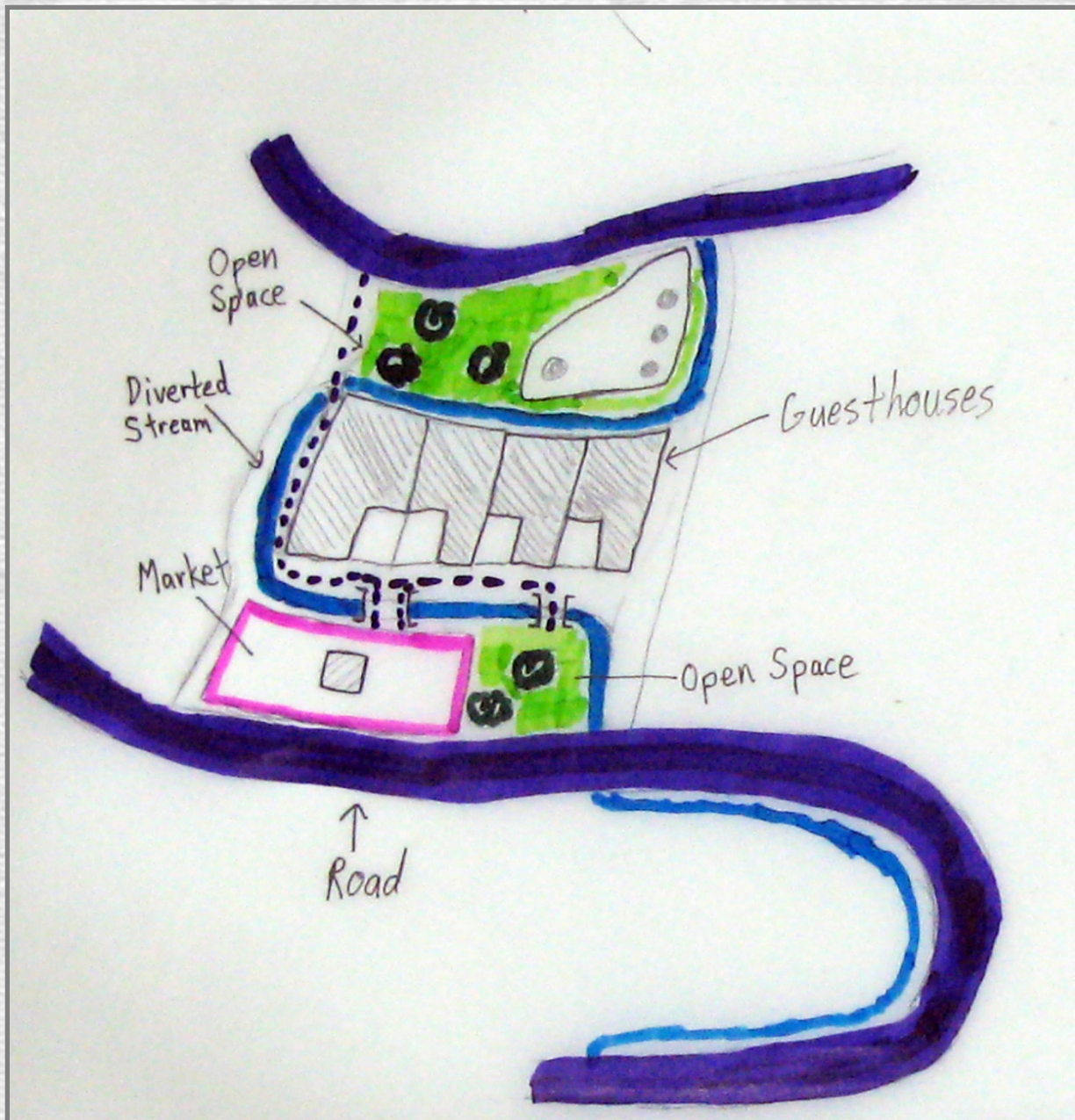




河道节点设计  
River site plan

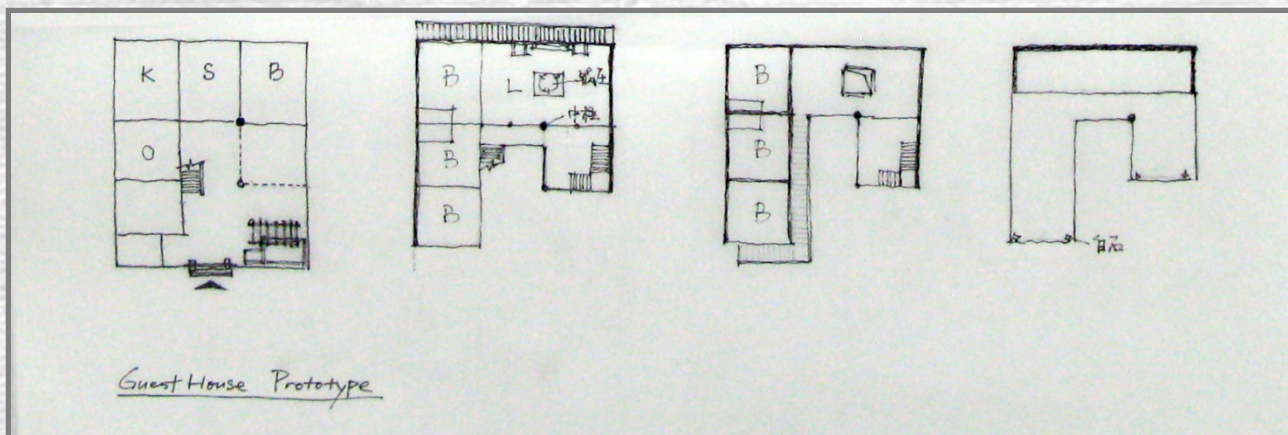
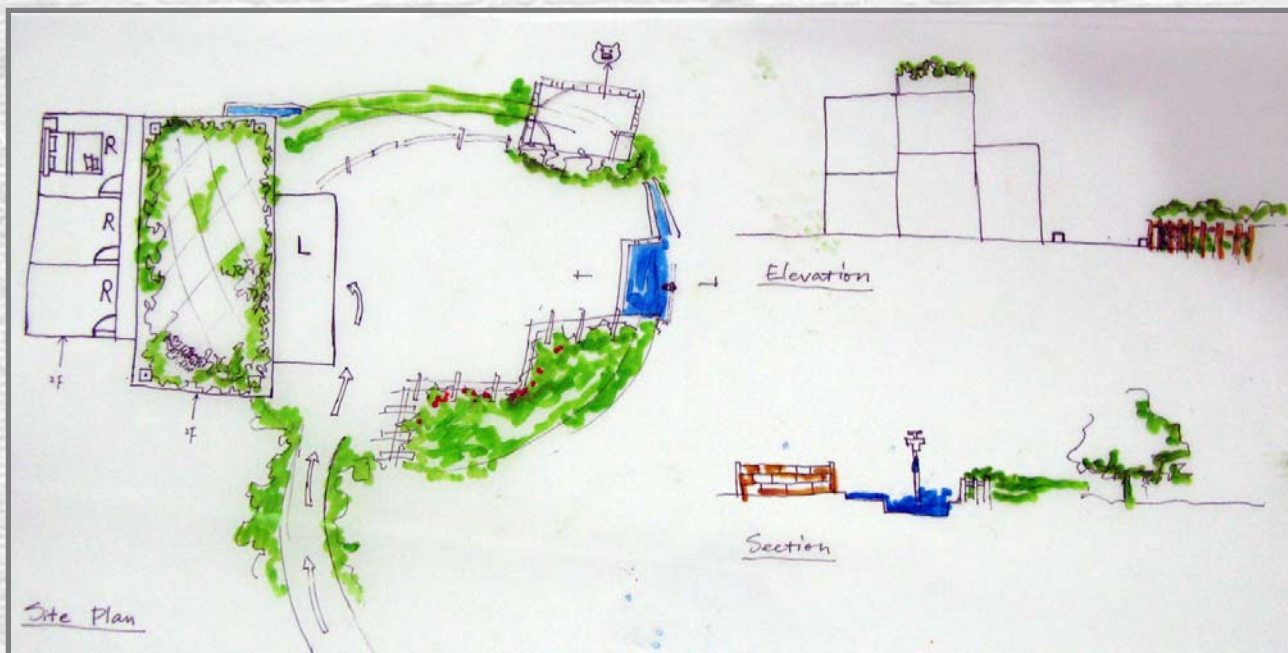






信息中心场地设计  
Information center  
site plan





建筑平面原型设计  
Guesthouse site  
plan and  
prototype