

桃坪羌寨初步规划

TAOPING MASTER PLAN

过去与将来的文化景观

**SYNERGY:
CULTURAL LANDSCAPES OF THE PAST +
CULTURAL LANDSCAPES OF THE FUTURE**

Rachel Miller

LINDSEY YUEN

JASON HUTTO

王田媛 Emily

谢凌霄 Alex

贺泽亚 Sophie

GROUP C4

概念 CONCEPTS

营造和谐于

TO CREATE SYNERGY BETWEEN

- 新旧之间
- 传统与现代之间
- 旅游发展与农业经营之间
- 经济，生态，社会，文化之间

- Old + New
- Traditional + Modern
- Tourist Development + Agriculture
- Economic + Ecological + Social + Cultural

原则 PRINCIPLES

- 给与社区营造足够权利
- 尊重生态活动
- 在经济，生态，社会，文化之间寻求平衡

- To Empower the Local Community
- To Respect Ecological Processes
- To Balance Economic, Ecological, Social and Cultural Goals

政策 POLICIES

文化及生态保护

CULTURAL + ECOLOGICAL PRESERVATION

- 保护特定住宅，使其恢复96年前状态
- 提升本地教育水平至高中程度
- 恢复水系统
- 恢复前期规划中消失的农田
- 对临时建设中的材料进行再利用
- 增强废水处理能力

- Restore Water System
- Restore and Preserve Selected Historically Significant Structures to Pre 1996 Condition
- Enhance Local Educational Opportunities For Local Children
- Restore Agriculture Land Lost to Previous Planning
- Re-use Materials from Temporary Structures
- Enhance Waste Management

政策 POLICIES

安置 RELOCATION

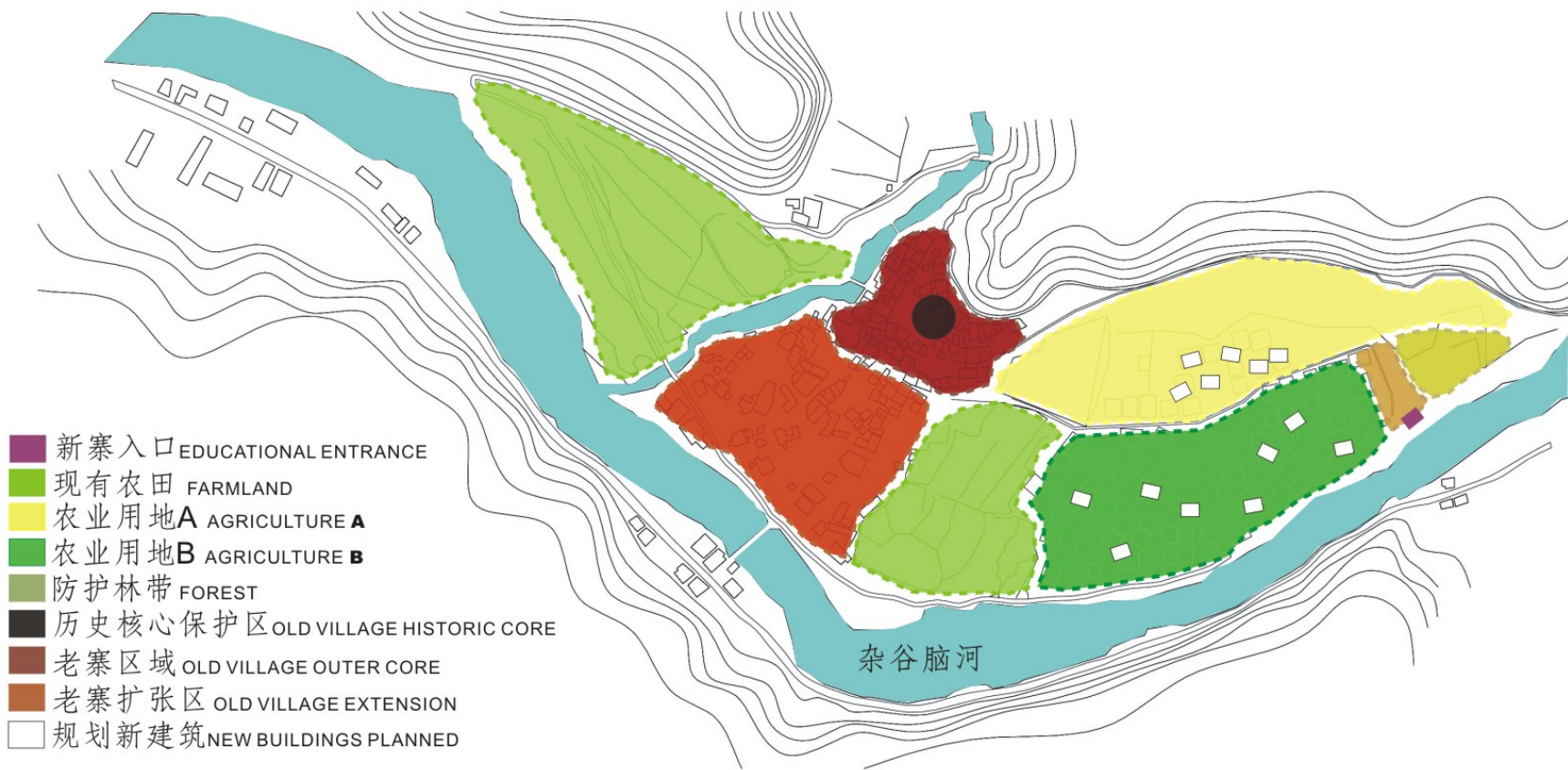
- 允许村民于老寨居住
- 同时认可新寨的发展
- Allow Villagers to Live in Old Village + Development Opportunities in New Village

旅游发展 TOURISM DEVELOPMENT

- 多样化的旅游体验（老宅住宿，现代化设施的小屋住宿，参与耕作）
- 确保社区在旅游发展中获利
- 限定经营权仅可为羌民
- Diversify Types of Tourist Experiences (Home Stay, Work Stay, Modern Amenities Lodging)
- Ensure Tourism Benefits Local Community
- Limit Business Ownership to Qiang People

土地使用概念规划

LAND USE CONCEPTUAL SITE PLAN



老宅核心历史保护区

OLD VILLAGE HISTORIC CORE

设计纲要 DESIGN GUIDELINES

建筑材料及元素：

- 保护并恢复老宅至96年前风貌
- 去除所有非原始材料
- 拆除所有非原始部件（如电线，水管）

Architectural Elements and Materials

- Restore + Preserve Buildings to Pre 1996 Conditions
- Remove all Nontraditional Materials
- Remove all Nontraditional Modern Infrastructure (Electrical and Plumbing Fixtures)

景观及步道环境

恢复开放性空间的原始用途（禁止留宿）

Landscaping and Pedestrian Environment

- Restore Opens Spaces for Traditional Qiang Uses

(Prohibit Home Stays)

老宅非核心区

OLD VILLAGE OUTER CORE

设计纲要 DESIGN GUIDELINES

建筑元素及材料:

- 允许保留附加建设
- 禁止任何新建设
- 执行相关标准确保现代设施完全融入古民居（包括电线，水管）
- 将非传统的材料适当隐藏和美化（如加固混凝土）

Architectural Elements and Materials

- Grandfather in Buildings with Post 1996 Additions
- Prohibit Any New Construction
- Develop + Enforce Standards for the Integration of Modern Infrastructure (Electrical + Plumbing)
- Aesthetically Conceal Non-Traditional Materials (Reinforced Concrete)

景观及步道环境

- 恢复开放性空间的原始用途（提倡老房住宿）

Landscaping and Pedestrian Environment

- Restore Opens Spaces for Traditional Qiang Uses

(Develop Home Stay Program)

老寨延伸区

OLD VILLAGE EXTENSION

设计原则 DESIGN GUIDELINES

建筑元素及材料:

允许保留附加建设

禁止任何新建设

执行相关标准确保现代设施完全融入古民居（包括电线，水管）

将非传统的材料适当隐藏和美化（如加固混凝土）

Architectural Elements and Materials

- Grandfather in Buildings with Post 1996 Additions
- Prohibit Any New Construction
- Develop + Enforce Standards for the Integration of Modern Infrastructure (Electrical + Plumbing)
- Aesthetically Conceal Non-Traditional Materials (Reinforced Concrete)

Landscaping and Pedestrian Environment

- Restore Opens Spaces for Traditional Qiang Uses

景观及步道环境

恢复开放性空间的原始用途

A区农业 AGRICULTURE A

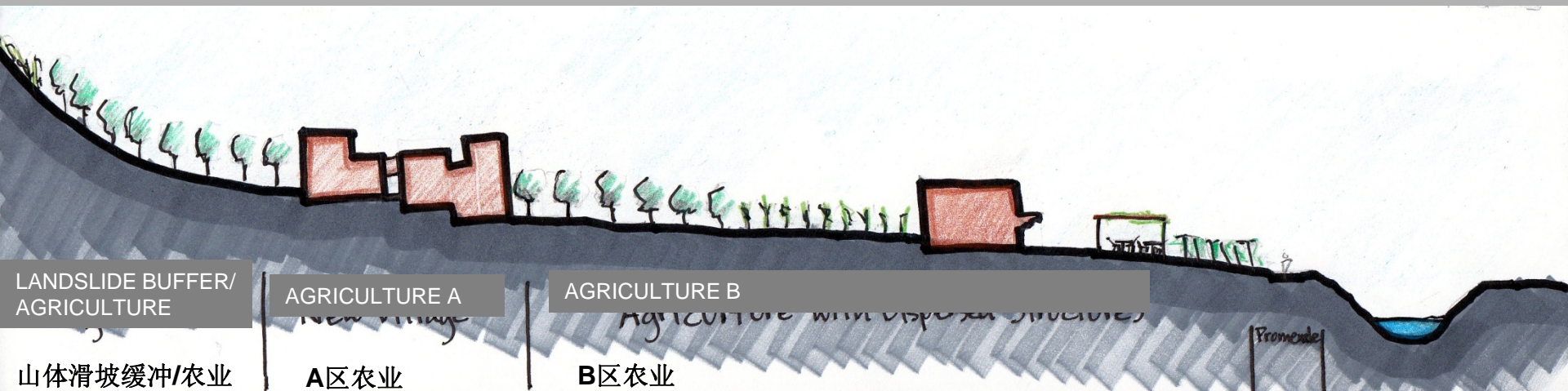
CLUSTER DWELLINGS
ENCOURAGE TRADITIONAL CONSTRUCTION METHODS

居住群落
鼓励传统建筑方式

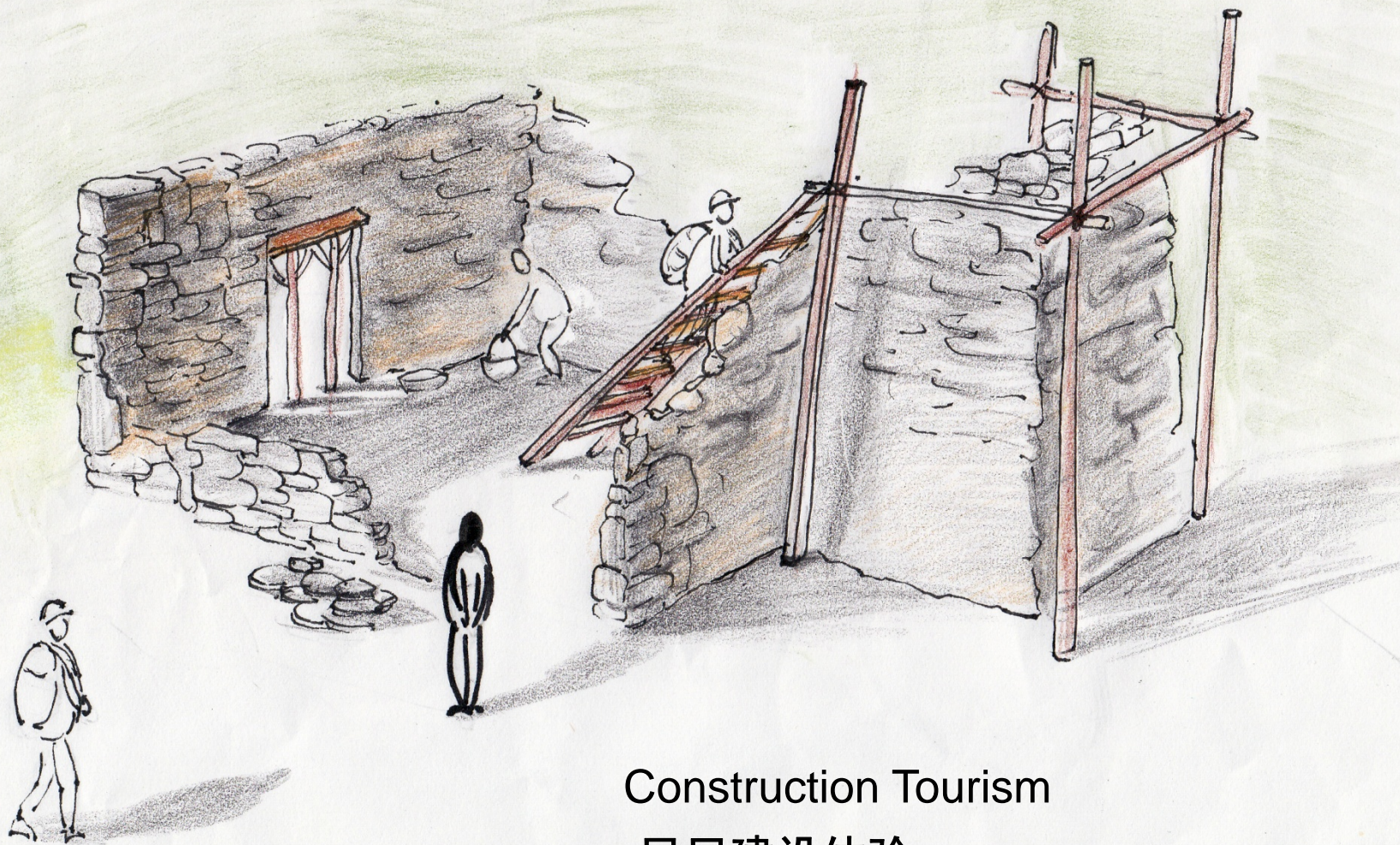


剖面区域放大

BLOWUP OF THIS ZONE



A区农业 AGRICULTURE A



Construction Tourism

民居建设体验

B区农业

AGRICULTURE B

SINGLE DWELLINGS
ALLOW SOME ENTERTAINMENT USES

独立住宅

允许一些娱乐使用

BLOWUP OF THIS ZONE

局部区域放大

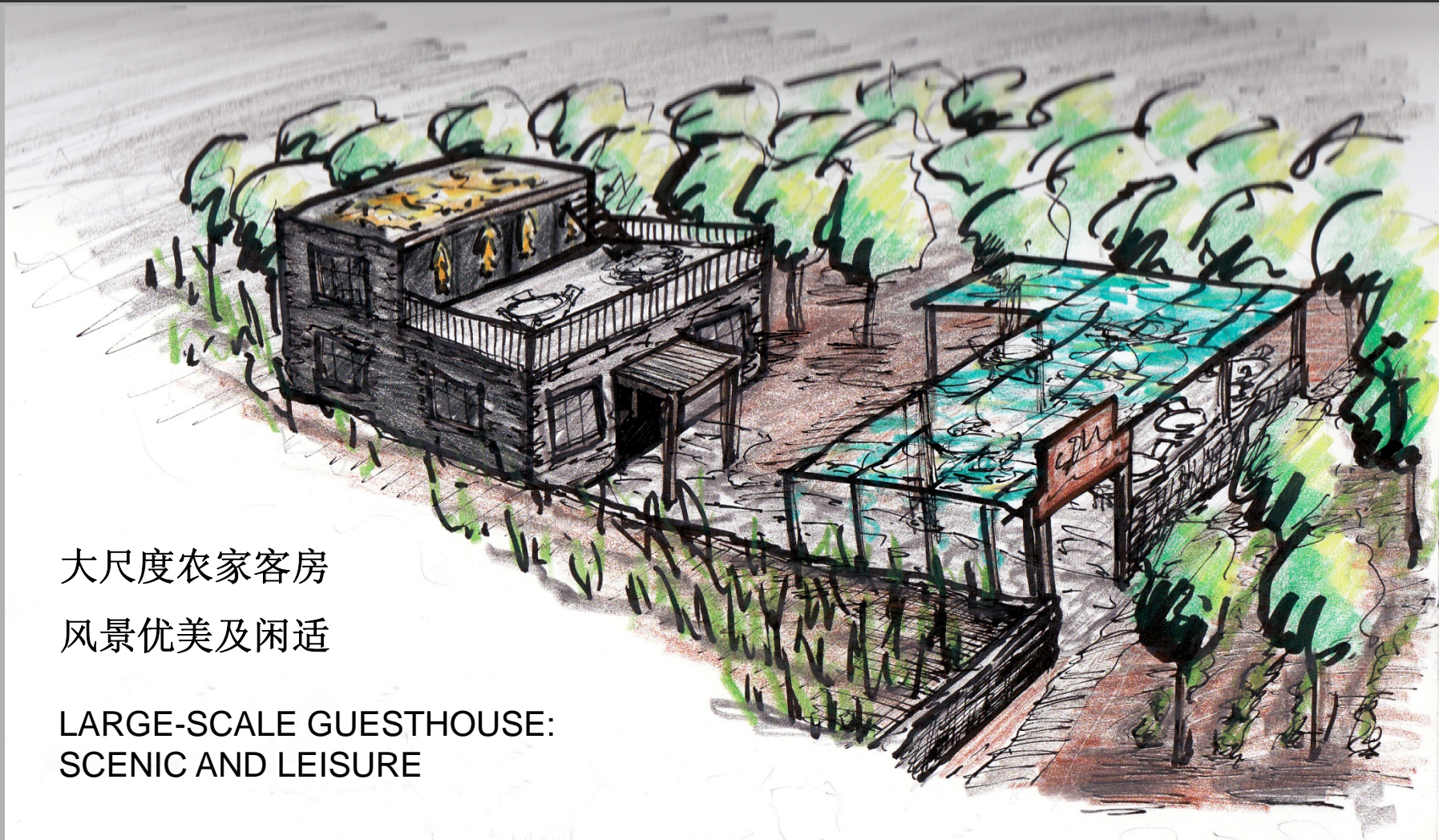


SMALL-SCALE FARMHOUSE:
ORGANIC FARMING EXPERIENCE

小尺度农房 原生态农耕体验

B区农业

AGRICULTURE B



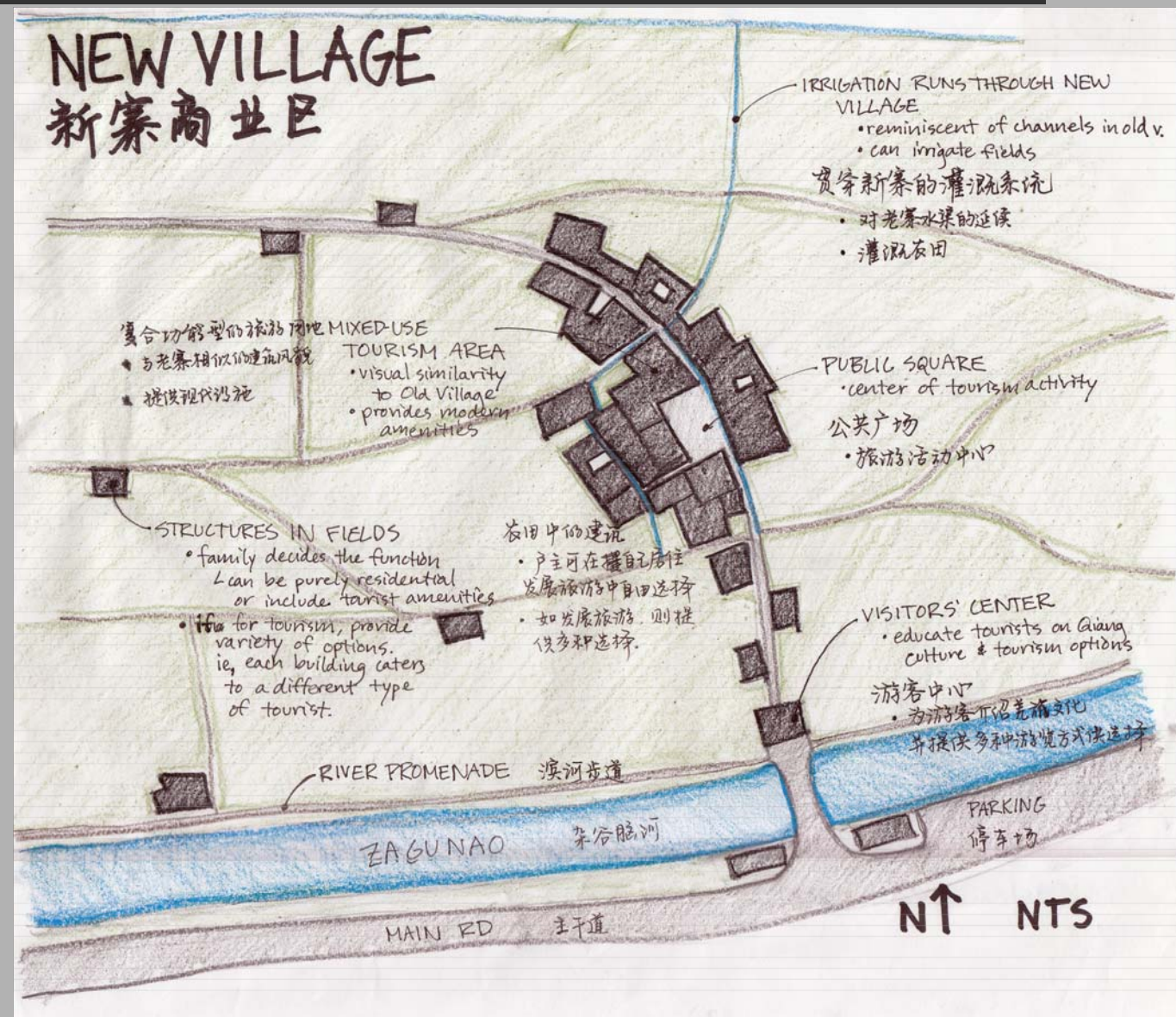
大尺度农家客房
风景优美及闲适

LARGE-SCALE GUESTHOUSE:
SCENIC AND LEISURE

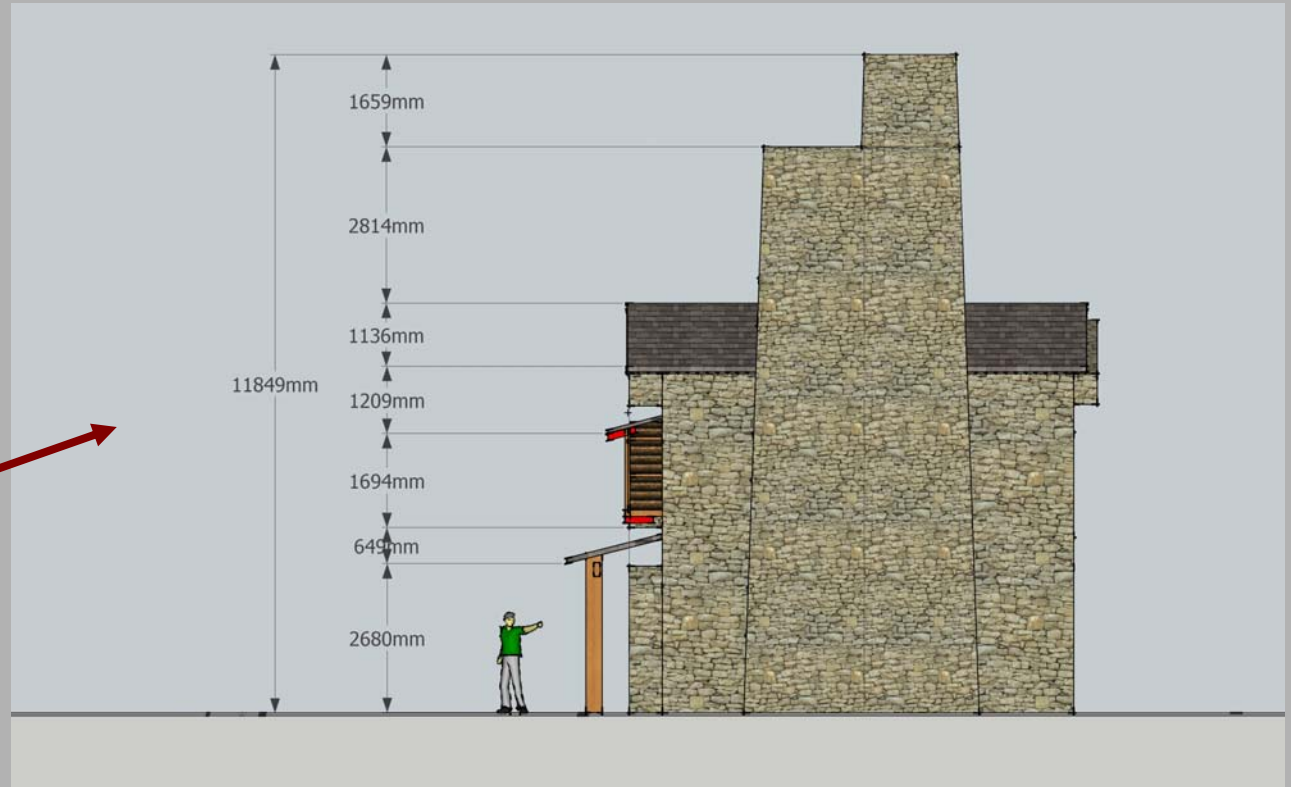
新寨 NEW VILLAGE

Site plan zone

区域平面图



新寨游客中心 NEW VILLAGE VISITORS CENTER



作为入口一部分，可让游客对羌文化得到宏观的了解

Show visitors a general comprehend as a part of entrance

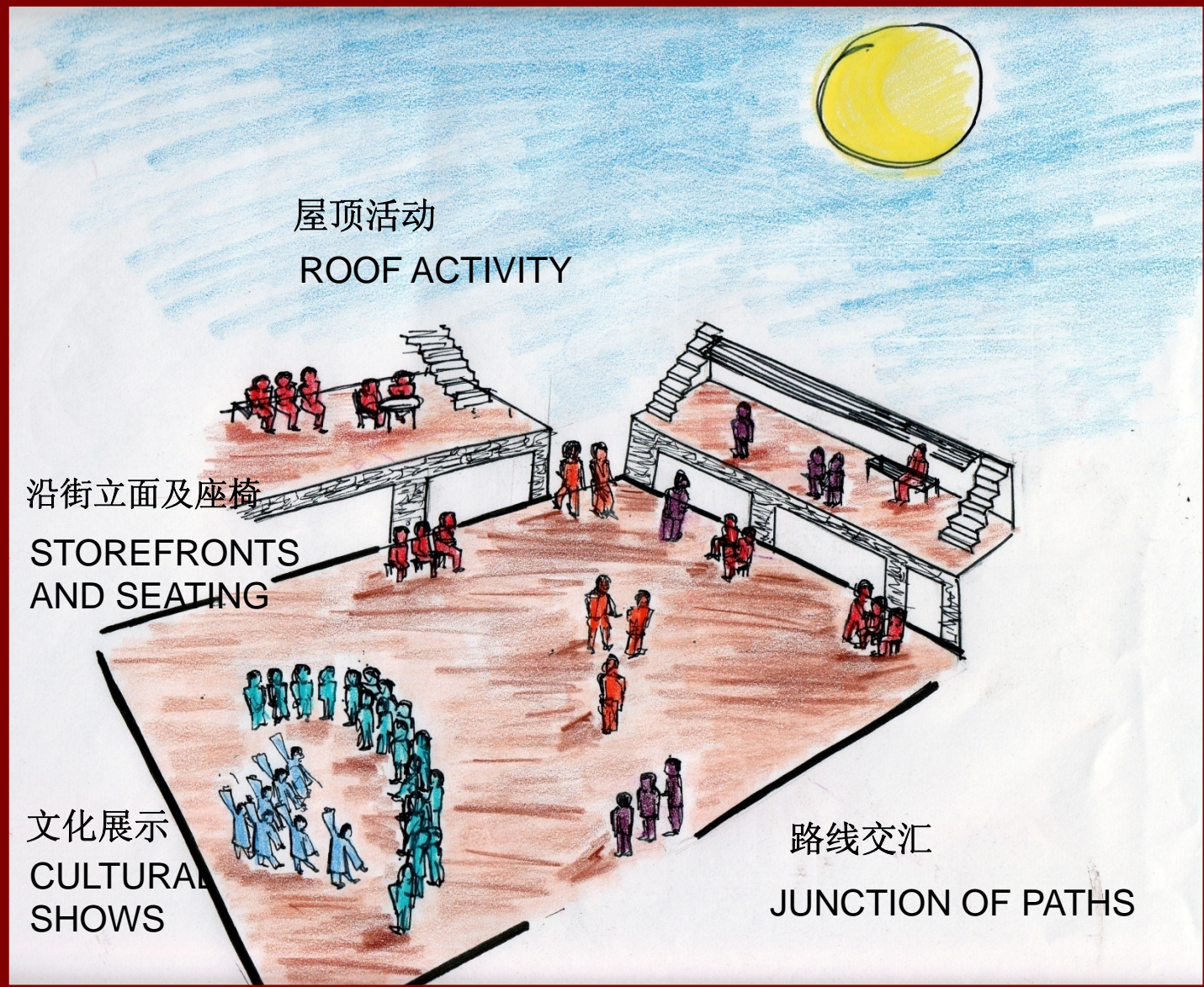
立面图 Elevation

新寨游客中心 NEW VILLAGE VISITORS CENTER

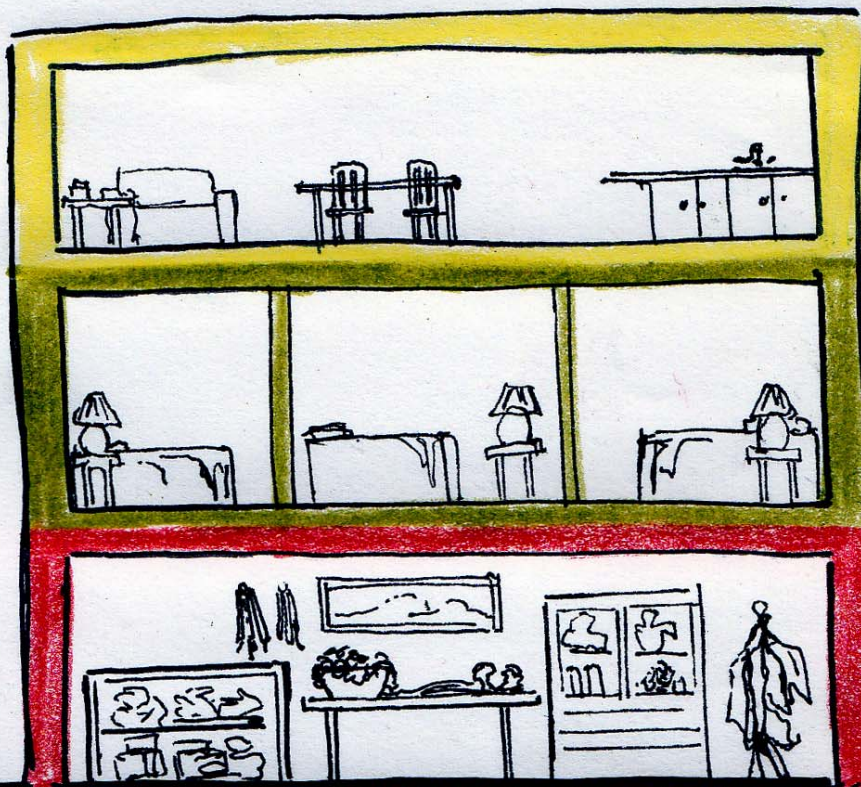
透视图 Perspective



新寨公共广场 NEW VILLAGE PUBLIC PLAZA



新寨建筑典型使用 NEW VILLAGE TYPICAL USES



居住

RESIDENCE



旅游接待

TOURIST
ACCOMMODATION



零售

RETAIL

