






Salmon Species  
native to Mason County

  
chinook

  
chum

  
coho

  
sockeye

  
pink

Sources: King County Salmon and Trout Identification;  
http://www.kingcounty.gov/environment/animalsandplants/salm  
on-and-trout/identification.aspx;  
and U.S. National Marine Fisheries Service;  
http://www.nmfs.noaa.gov/fishwatch/species/pink\_salmon.htm

Regulatory Background

- WAC 220-110-070: bridges are preferred method to cross a fish bearing stream
- Less expensive methods:
  - temporary culverts
  - bottomless arch culverts
  - arch culverts
  - round culverts
- Baffles and weirs used to fix existing culverts, but are no longer preferred.

County\_line

State Route

National Forests

Priority\_Fish\_Passage\_Locations

DNR Region

Northeast Region

Northwest Region

Olympic Region

Pacific Cascade Region

South Puget Sound Region

Southeast Region

WRIA Boundary

Kennedy-Goldsborough

Kitsap

Lower Chehalis

Queets-Quinault

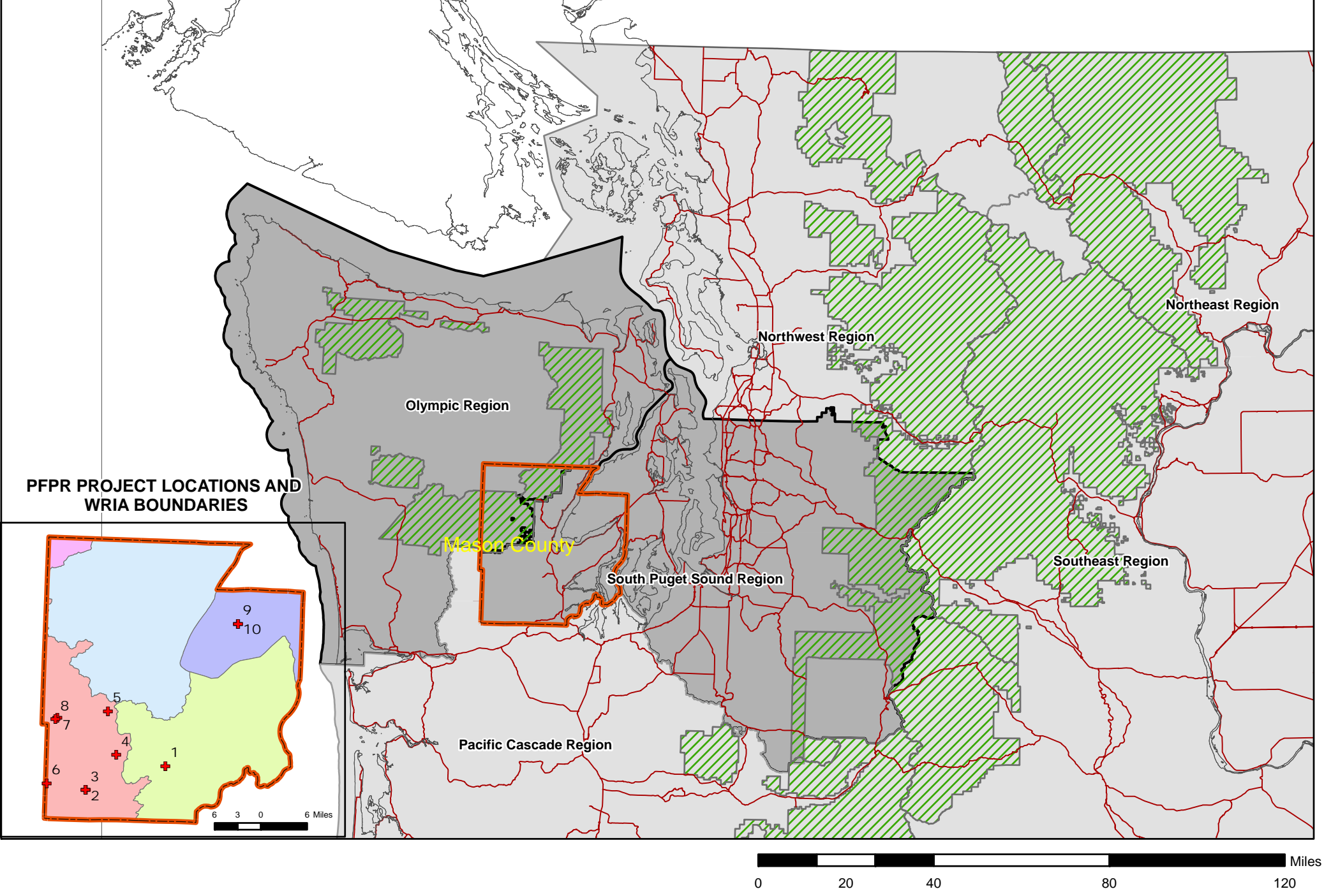
Skokomish-Dosewallips

GIS Data

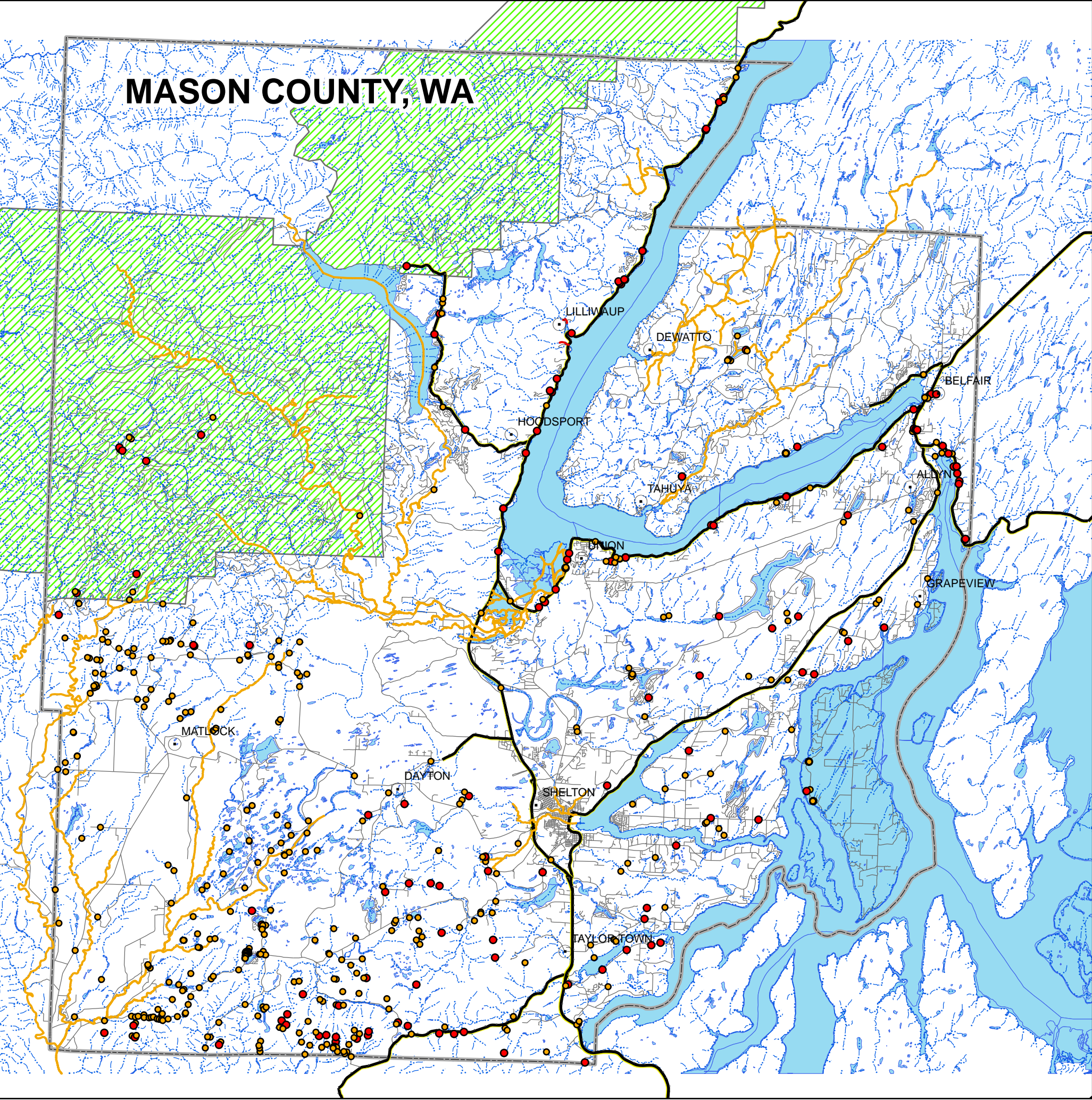
- Obtained GIS data from:
  - Washington Department of Fish & Wildlife
  - Washington Department of Transportation
  - Mason County
  - Washington Department of Ecology
- Constraints for high priority passages
  - method of filtering for blocked passages: blocked passage had to be in the vicinity of a stream with a depressed or critical population, chose 200 feet to obtain points close to the mouth of a tributary.

Fish Barriers

- Prevent fish, especially salmon, from reaching critical habitat
- Man-made fish barriers:
  - roads
  - dams
  - reservoirs
- Natural barriers: debris or water falls
- Barriers can be partial or complete



BLOCKED FISH PASSAGES



IDENTIFYING BARRIERS TO FISH PASSAGE IN MASON COUNTY

PRIORITY FISH PASSAGE RESTORATION (PFPR) PROJECTS

SITE	SITE_ID	TYPE_DESC	ROAD_NAME	BLOCK_STAT	SURV_DATE
1	115 MC033	Culvert	Shelton Valley Rd	Partial Barrier	6/20/2001
2	127E0116	Culvert	STC 5000	Partial Barrier	11/6/2002
3	127E0117	Culvert	STC 5000	Partial Barrier	11/6/2002
4	127E0230	Culvert	STC 5000	Partial Barrier	11/27/2002
5	127E0388	Culvert	STC 808	Partial Barrier	12/9/2002
6	127M0005	Culvert	STC 6780	Partial Barrier	10/22/2002
7	127M0014	Culvert	Beeville Loop Rd	Partial Barrier	10/29/2002
8	127M0017	Culvert	Beeville Loop Rd	Partial Barrier	1/9/2003
9	980315	Culvert	Unnamed	Total Barrier	4/22/1999
10	980319	Culvert	Unnamed	Partial Barrier	4/29/1999

County\_line

State Route

Street\_Centerlines

Place\_Names

Partial Barrier

Total Barrier

Priority\_Fish\_Passage\_Locations

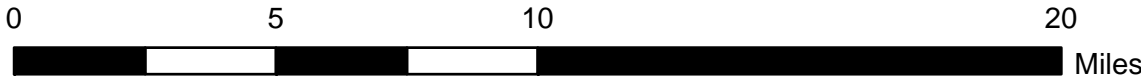
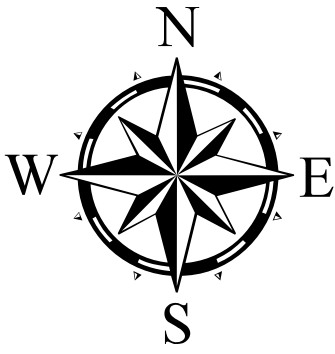
Water Bodies

National Forest

Fish Population Status

Critical

Depressed



FISH PASSAGE LOCATIONS FOR POTENTIAL PFPR PROJECTS

