



A study of the drainage as evident from an evaluation of the irrigated land in the flood plain of the River Moustiques

Presite-visit preparation: the creation of field maps of the basin area using GIS

Mary Strazer and Magnea Ingolfsdottir

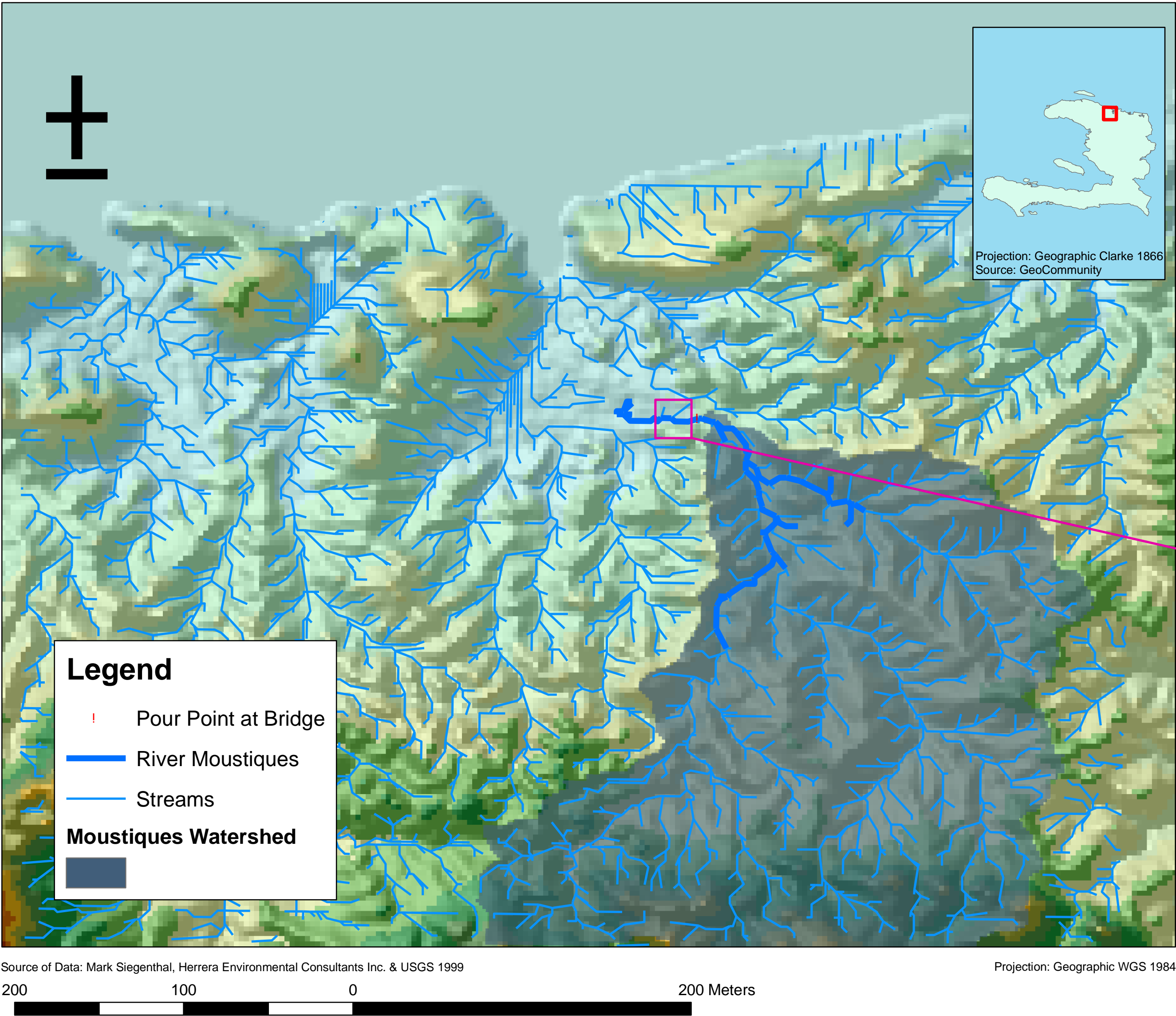
Department of Civil and Environmental Engineering, University of Washington, in partnership with Herrera Environmental Consultants Inc.

Picture of the River Moustiques Floodplain

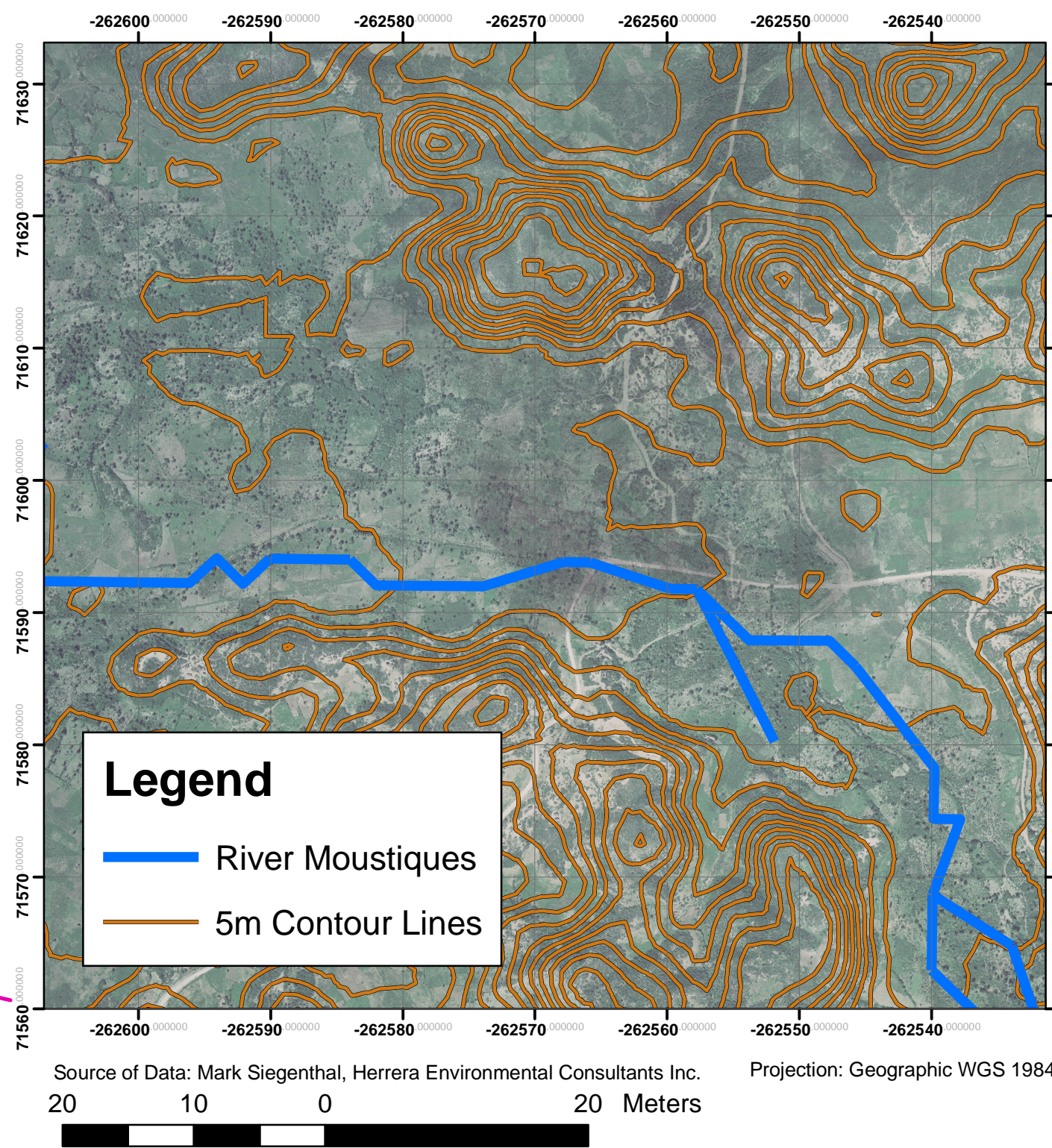


Courtesy of Mark Siegenthal, Herrera Environmental Consultants Inc.

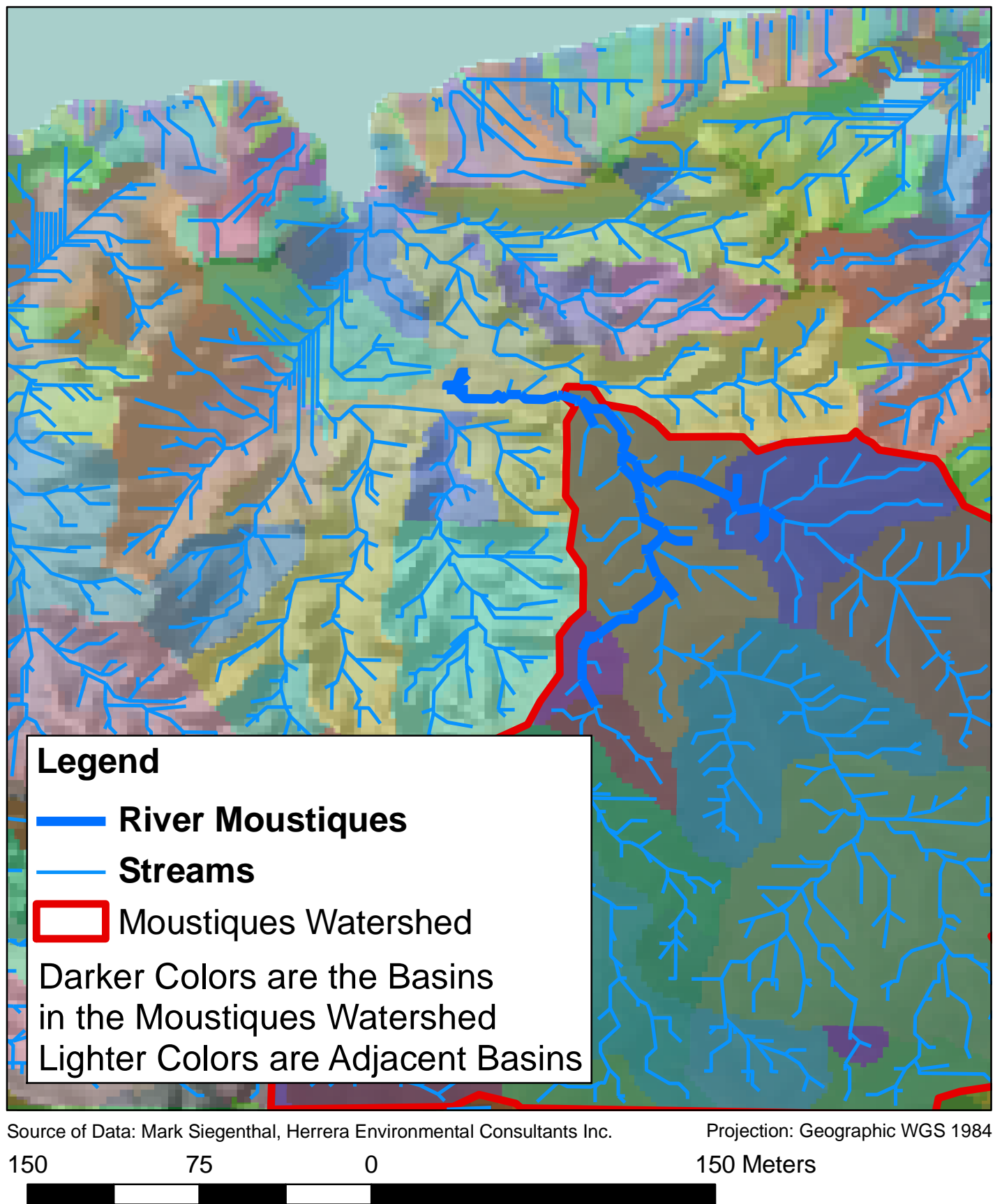
View of the River Moustiques Watershed



Example of a Field Map



View of the River Moustiques Basins



Roughly 35,000 people of NorthWest, Haiti living and working in the vicinity of Les Moustiques river, are seasonally inundated by floods. Engineers from Herrera Environmental Consultants Inc. are planning a site visit to the area to assess the situation and create design alternatives. Before they go, the engineers need a set of field maps for the basin area. These maps are the basis for the field maps.

Map of the River Moustiques Floodplain

