

A GIS Site Exploration to Locate Washington's Next Ski Resort

Prepared by: Mark Raleigh, Allied Alpine Engineers, Inc.

Prepared for: Team Zurshaus, LLC & CEE 424

Presented on: December 7, 2007



Objective

Team Zurshaus, LLC has selected Allied Alpine Engineering, Inc. to conduct a study to recommend strategic locations for a new ski resort in the State of Washington. Allied Alpine Engineering has utilized ArcGIS to investigate a potential site that conforms to specifications provided by Team Zurshaus.

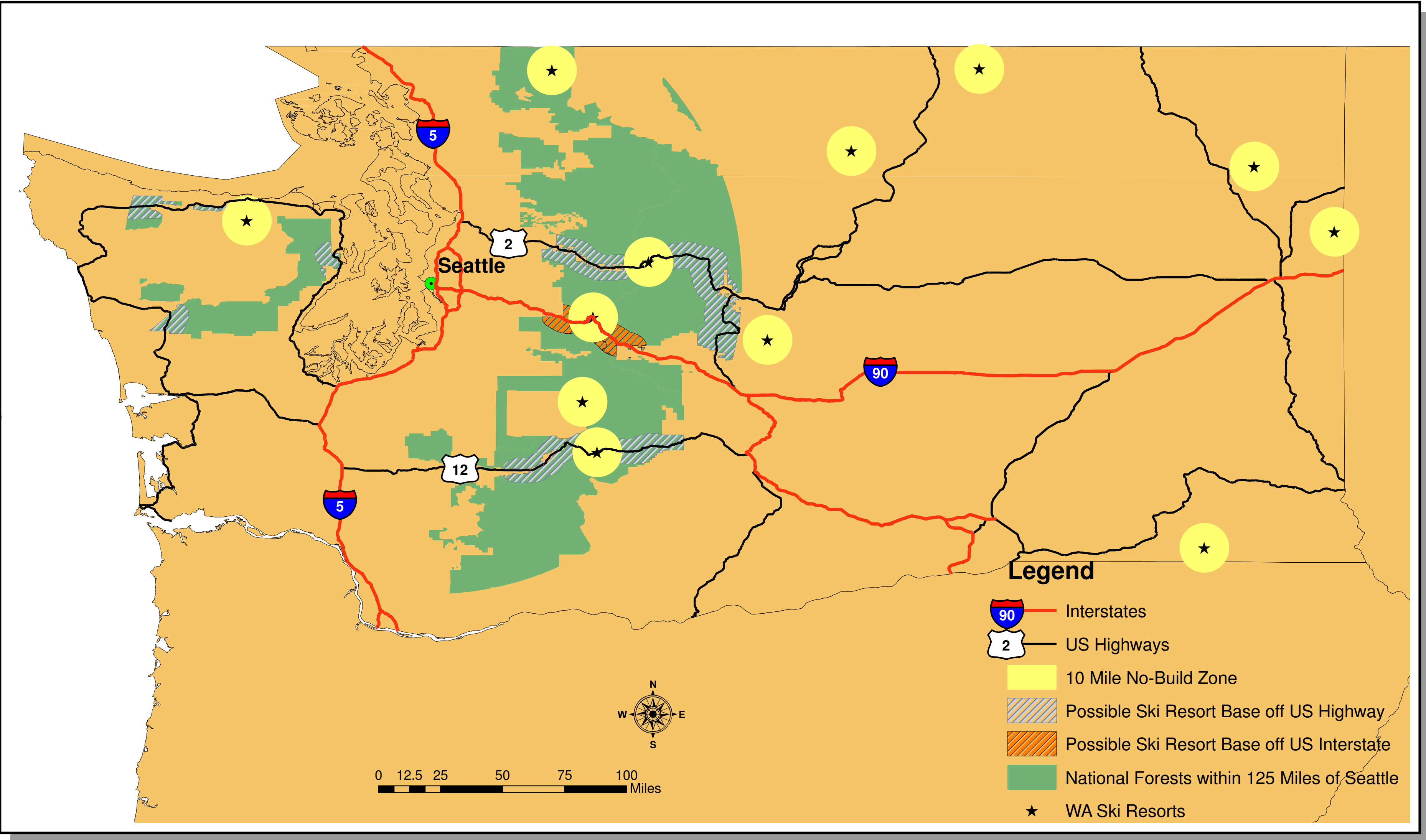
Client Specifications

Proximity: Within 125 miles of Seattle
Location: On National Forest Land
Access: Off major US Interstate or Highway & Based within 5 MI of the highway to reduce new road construction
Neighboring Resorts: No closer than 10 miles
Max Monthly Temperature: Coldest available to preserve snow & to ensure long-term vitality with regional climate change
Annual Snowfall: Minimum 200 inches
Vertical Rise Potential: Minimum 2000 ft
Slopes: Diversity of slopes for skiers of all abilities

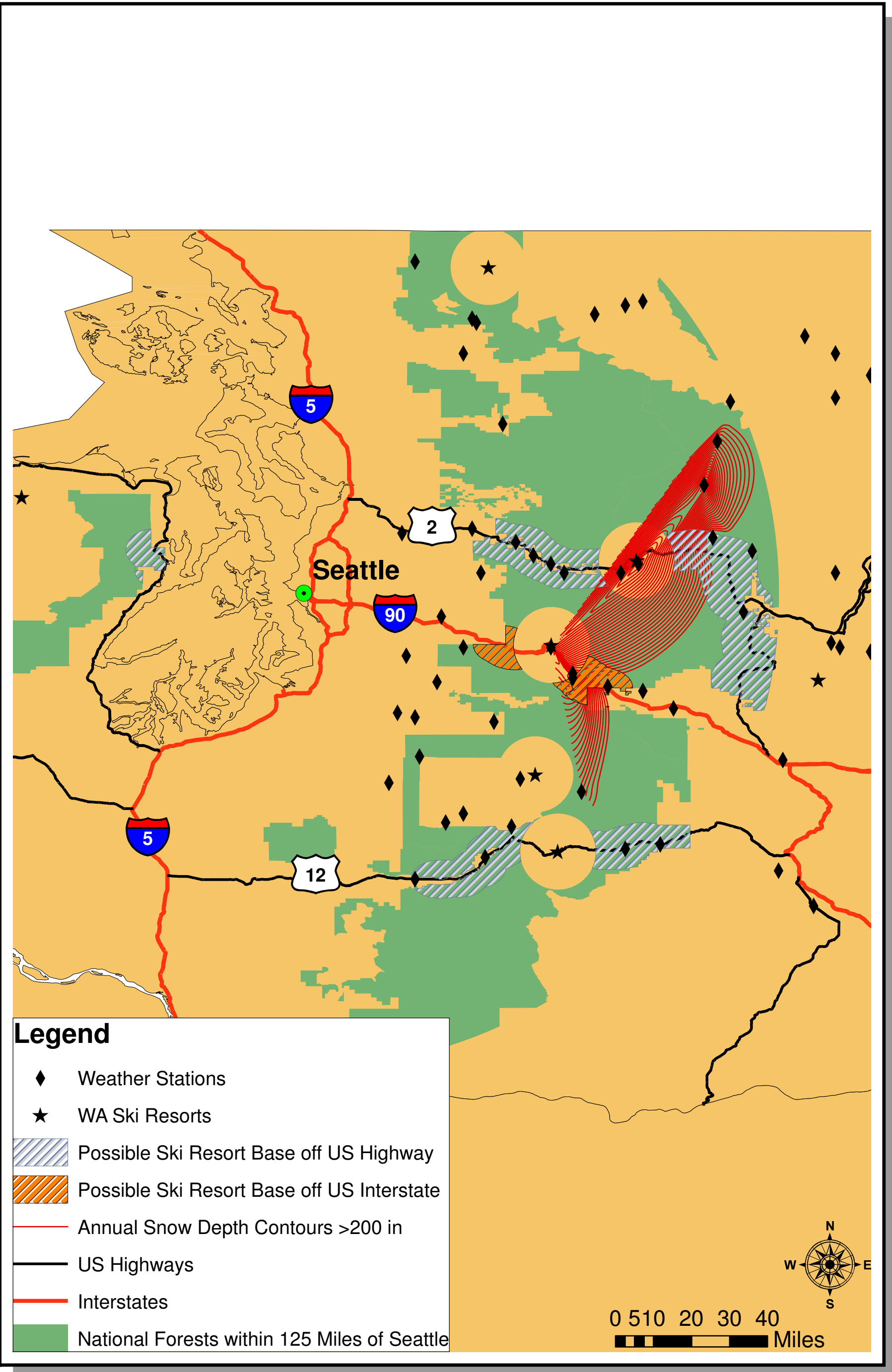
1. Existing Conditions



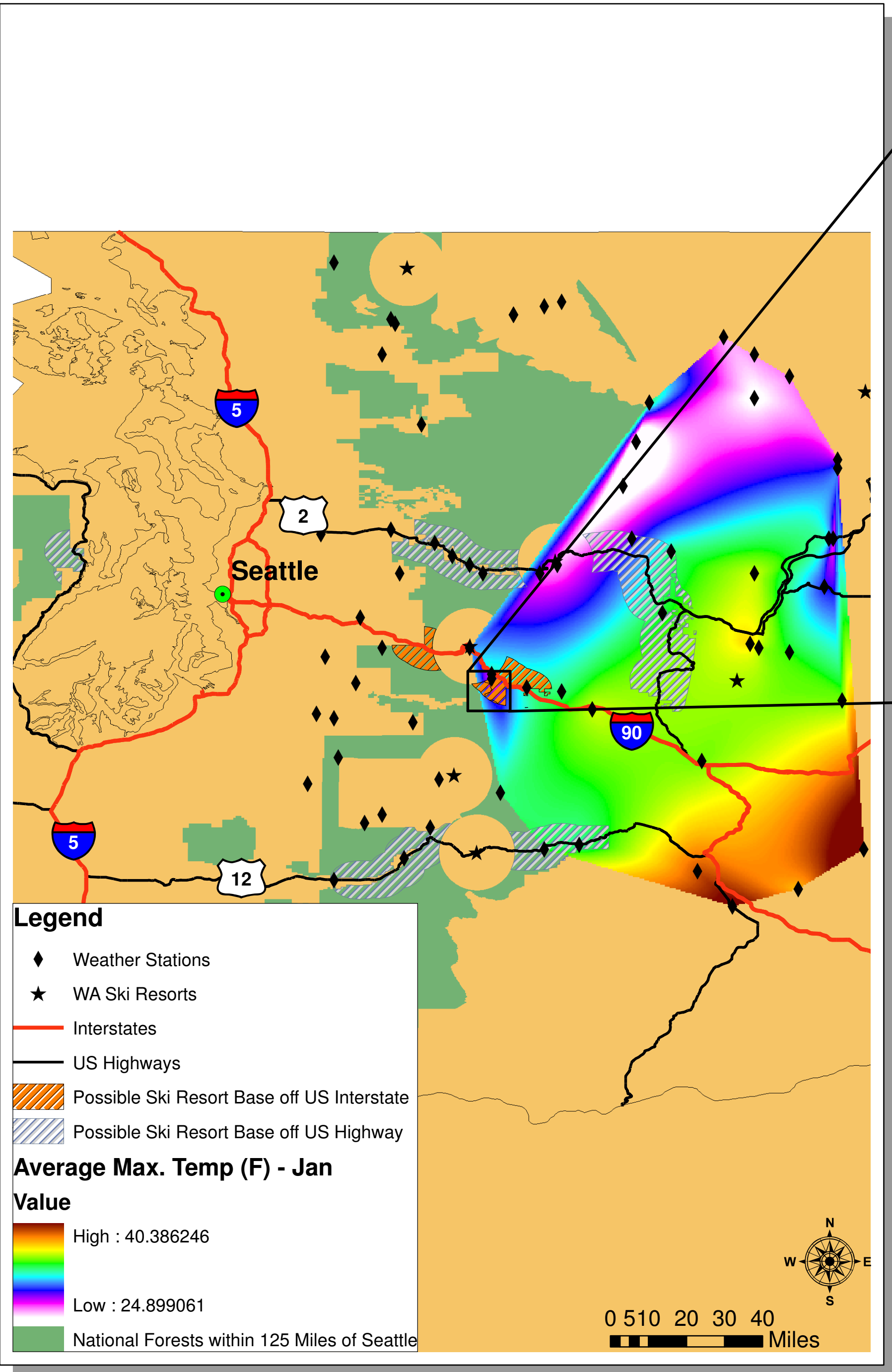
2. Proximity Analysis



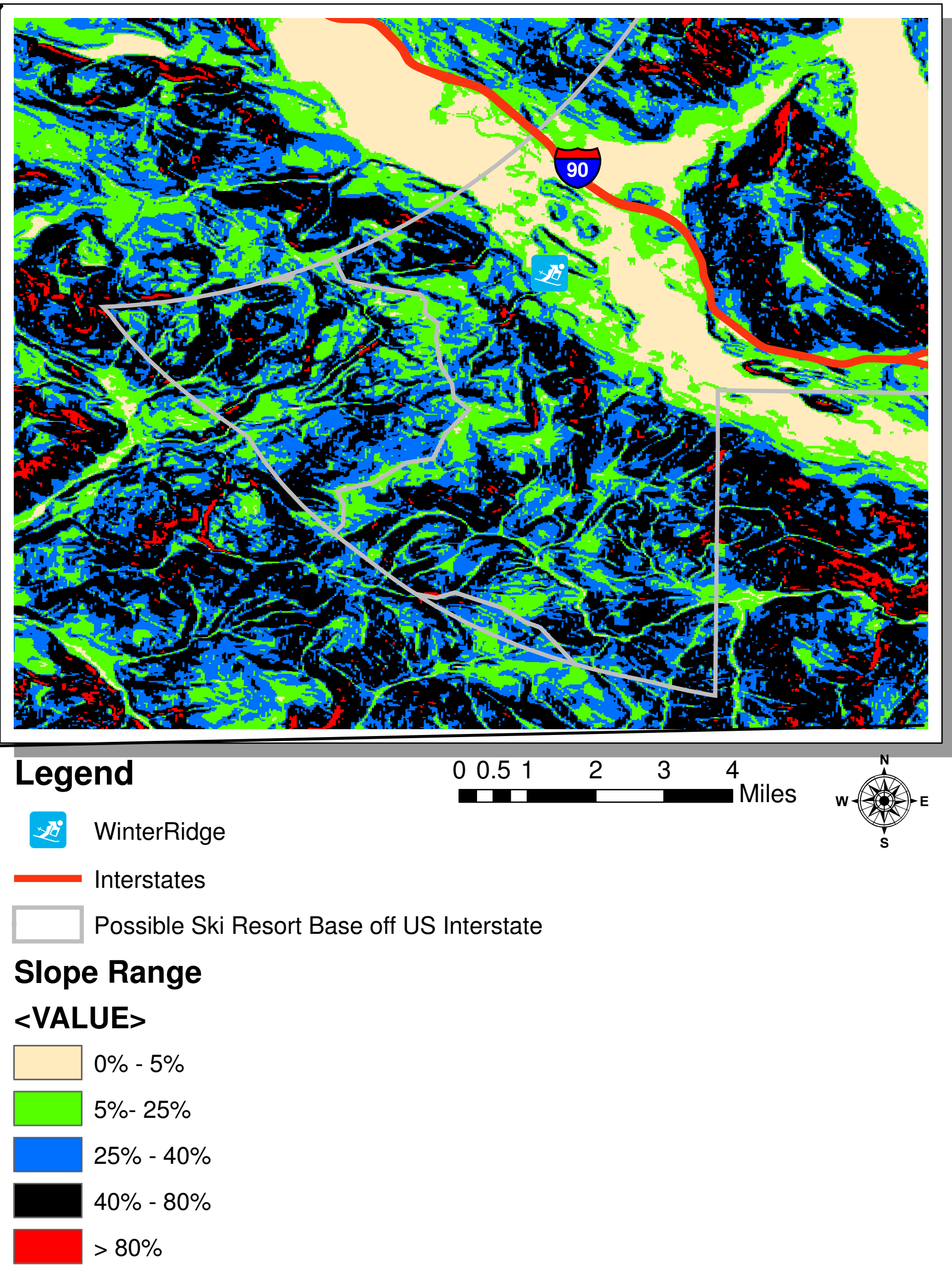
3. Average Annual Snowfall Analysis (Eastern Slope)



4. Average Maximum Winter Temperature Analysis (Eastern Slope)



5. Terrain Slope Analysis



6. Site Selection

