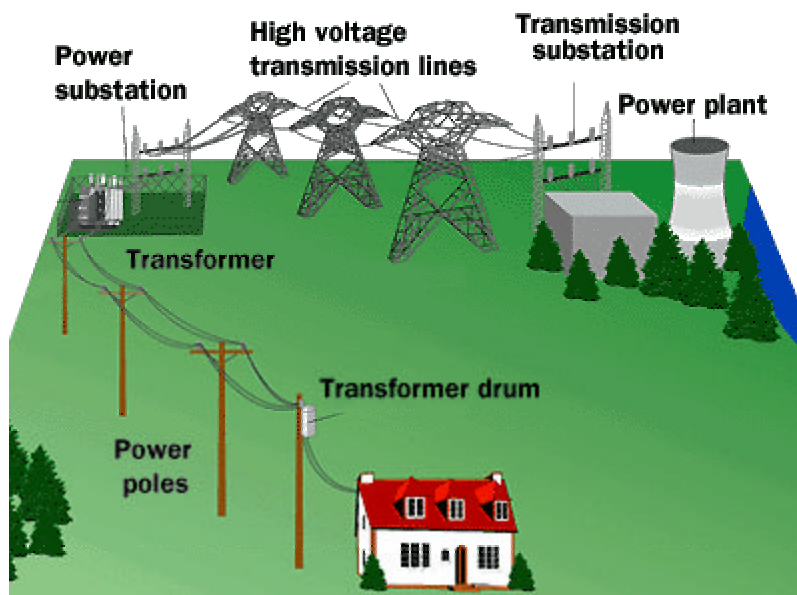


## How Power Distribution Grids Work

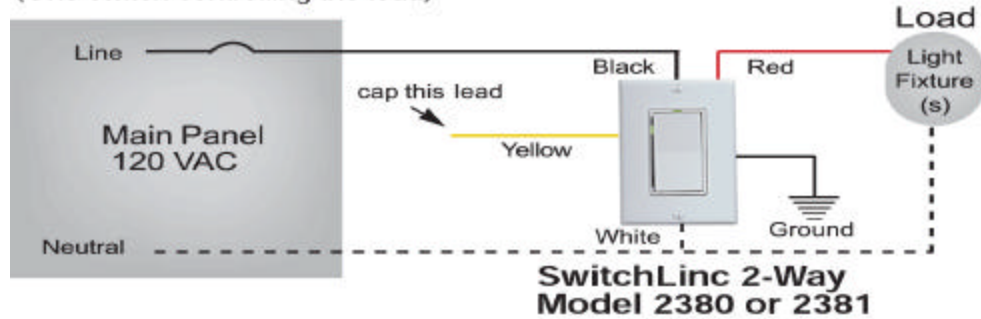
Power travels from the power plant to your house through an amazing system called the **power distribution grid**.



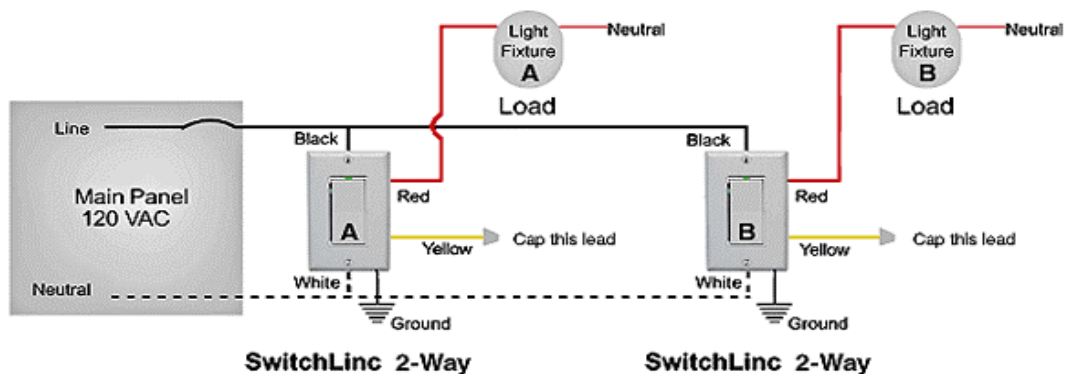
# Electrical Wiring

## SwitchLinc 2-Way Wiring Diagram

(One switch controlling the load)



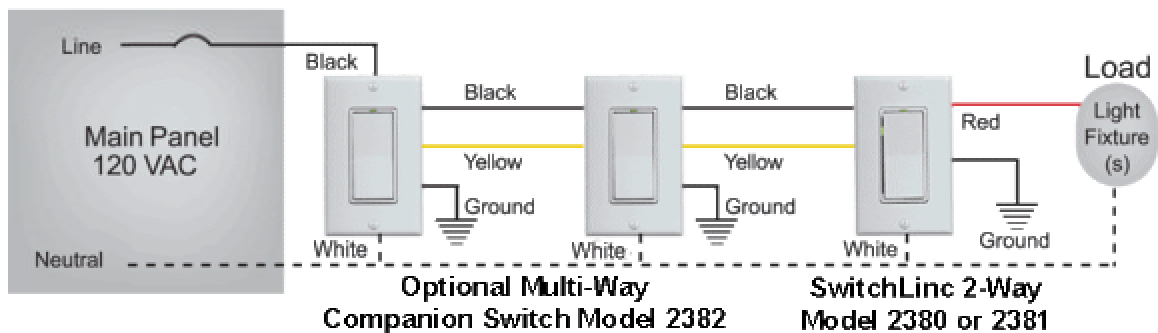
## Using 2 SwitchLincs to Create a Virtual 3-Way Circuit

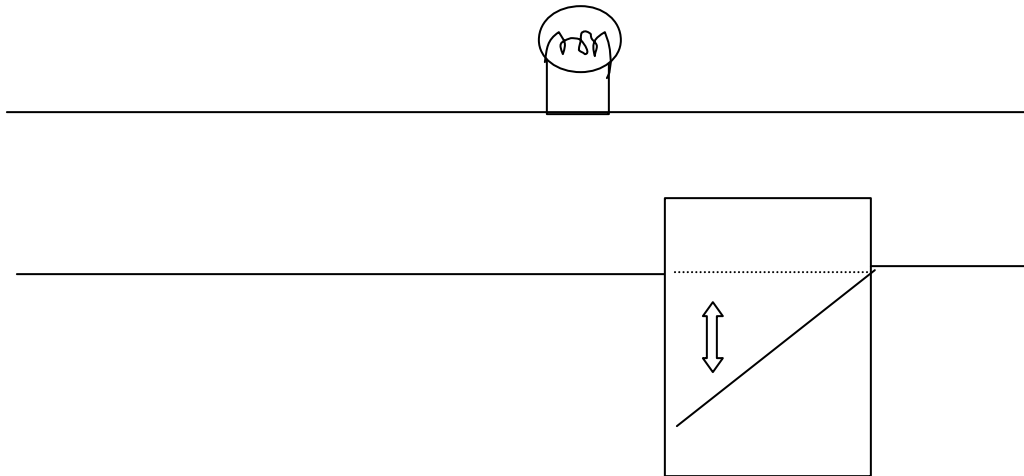


Light fixtures A & B will work as if they were part of the same 3-way circuit. Either switch A or B can be used to turn on/off (dim/brighten for dimmers) lights A & B even though there is no "traveller" wire.

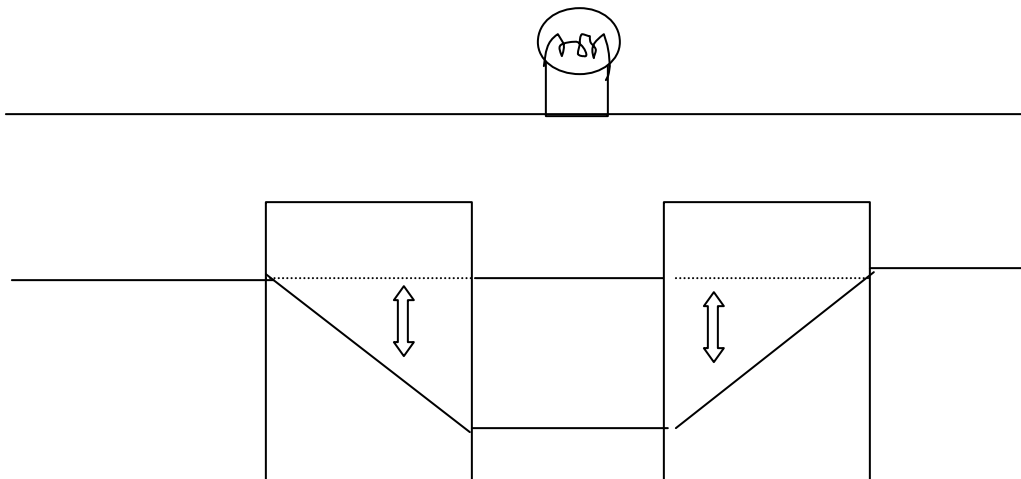
## SwitchLinc Multi-Way Wiring Diagram

(Two or more switches controlling the load)





Single switch wiring



Two three way switches wiring

## Assignment

Can you connect a switch to a light fixture? (10%)

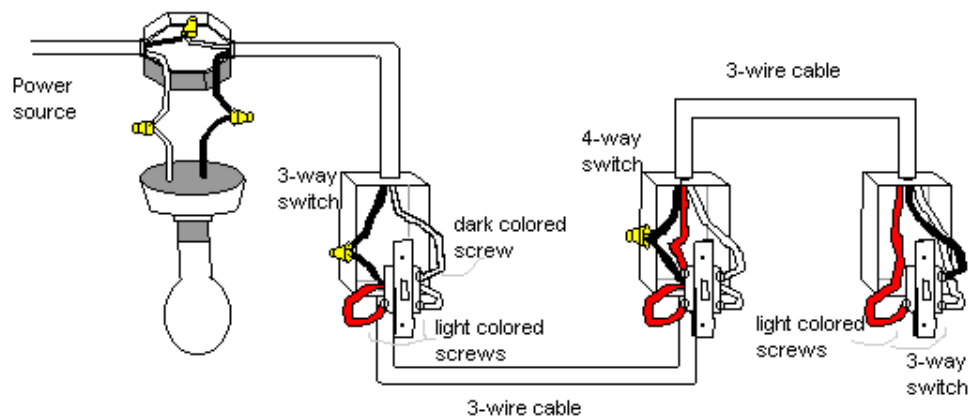
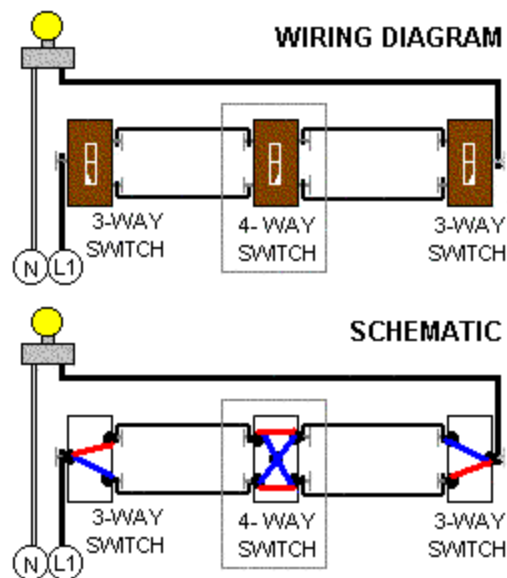
If you have more than one entrance to a room, it's handy to have more than one switch to turn the lights on and off.

Can you figure out any other ways of connecting two switches? (20%)

Can you explain the way the power flow across the switches? (20%)

Can you do the three switches configuration? (20%)

How many different ways of wiring can you come up? (20%)



How to connect multiple light fixture to single or multiple switches? (10%)

