

the ENGR100 organization

TO: Engr 100 Students

FROM: Feng-Ju Hsieh, ENGR 100 Instructor

SUBJECT: Results of Quiz *Precise description of the content below*

DATE: October 2, 2000

This memo describes the results of the True/False quiz that was administered at the beginning of Autumn Quarter 2000 in Engr 100.

The following two figures show the frequency of "True" answers given by the class as a whole for each question. Figure 1 shows the total number of "True" responses that were given for each question. Figure 2 shows the total number of "True" responses given by each student.

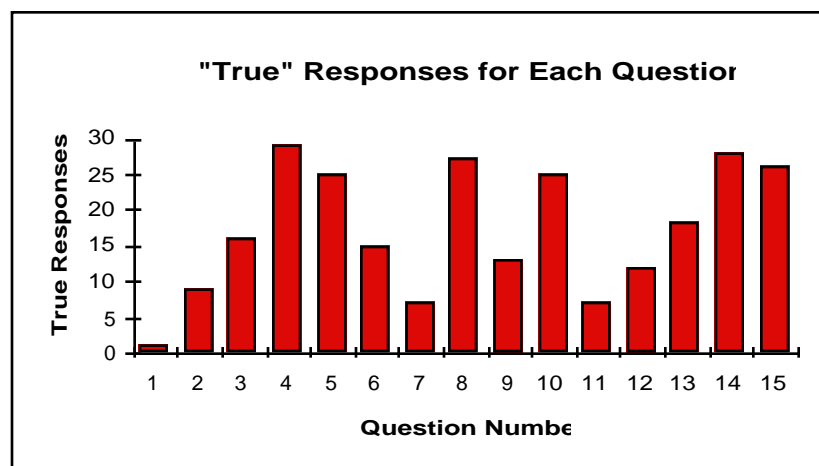


Figure 1. Number of "True" responses for each True/False question.

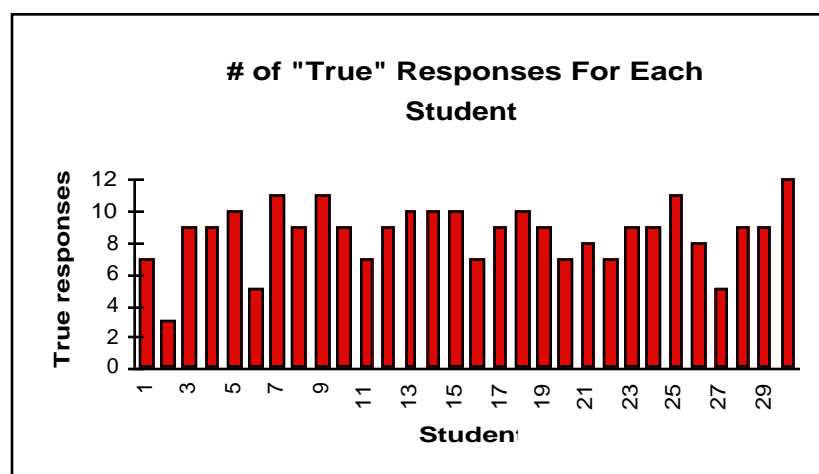


Figure 2. Number of "True" responses given by each individual student.

Conclusion

The instructor feels that the best answer to each question is "False". Therefore, the two figures illustrate the difference in opinion between the instructor and the students.