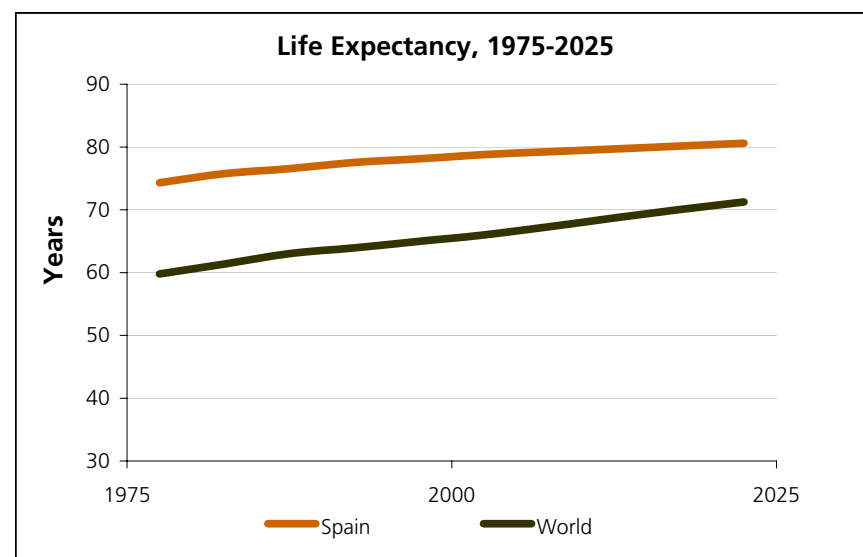
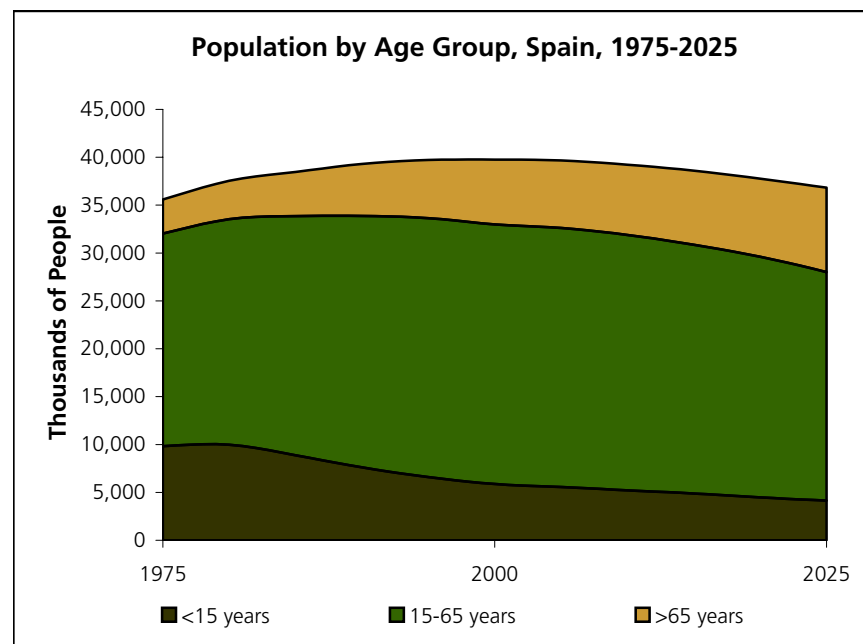


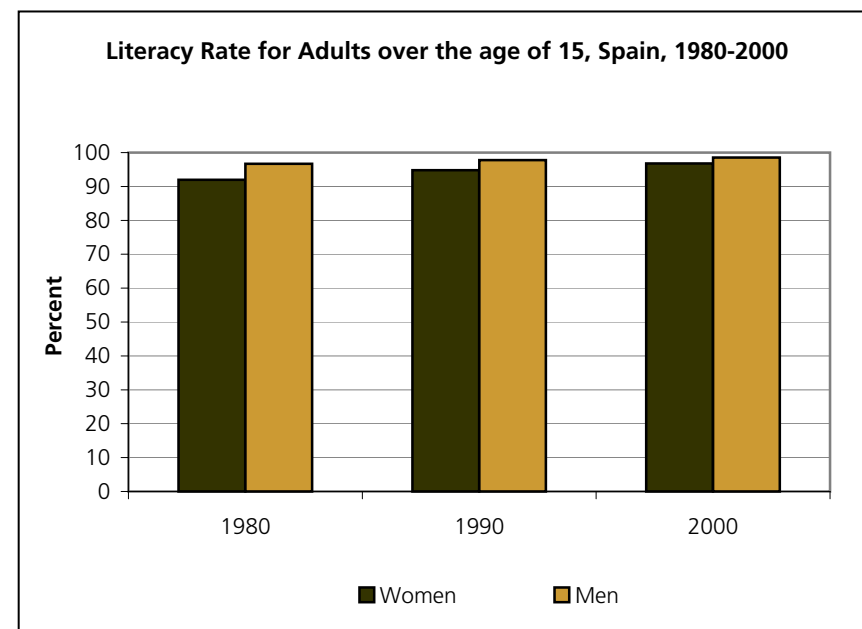
Demographic and Health Indicators

	Spain	Europe	World
Total Population (in thousands of people)			
1950	28,009	548,206	2,519,495
2002	39,924	725,124	6,211,082
2025 (projected)	37,395	683,532	7,936,741
Population Density (people per square km), 2000:	78.9	31.2	45.1
Average Annual Population Growth Rate, 1980-2000			
Total	1.2%	0.2%	1.6%
In rural areas	1.1%	-0.7%	0.9%
In urban areas	1.6%	0.6%	2.4%
Percentage of Population:			
Under age 15, 2002	14%	17%	29%
Over age 65, 2002	17%	15%	7%
Living in Urban Areas, 2000	78%	75%	47%
Average Total Fertility Rate {a}			
1975-1980	2.6	2.0	3.9
2000-2005	1.1	1.3	2.7
Infant Mortality Rate {b}, 2000-2005	5	10	55
Under-Five Mortality Rate {b}, 2000	5	X	83
Life Expectancy at birth (years), 2000-05			
Female	82.3	78.2	68.1
Male	75.4	70.1	63.9
Births Attended by Trained Personnel, 1994-2000 {c}	X	X	57%
Adults and Children Infected with HIV/AIDS, 2001 (number)	130,000	X	40,000,000
Percent of Adults Ages 15-49 infected with HIV or AIDS, 2001	0.5%	0.4%	1.2%
Number of Children Orphaned by AIDS since the beginning of epidemic, 2001	X	X	14,000,000
Safe Water and Sanitation {c}			
Access to Improved Sanitation, 2000			
Urban	X	X	85%
Rural	X	X	40%



View more Country Profiles on-line at <http://earthtrends.wri.org>

	Spain	Europe	World
Safe Water and Sanitation {c}			
Access to an Improved Water Source, 2000			
Urban	X	X	95%
Rural	X	X	71%
School Enrollment and Literacy {c}			
Net Primary School Enrollment, both sexes			
1980	X	X	X
1997-1999 {c}	105%	X	X
Net Secondary School Enrollment, 1997-1999 {c}			
Female	93%	X	X
Male	90%	X	X
Gross Tertiary School Enrollment, 1996-99 {c}	56%	X	X
Adult Literacy Rate, 2002			
Female	97%	99%	75%
Male	99%	99%	86%
Youth Literacy Rate (ages 15-24), both sexes			
1980	99%	100%	80%
2002	100%	100%	87%



Other Resources:

Country Profiles of the Food and Agriculture Organization of the United Nations, Economic Situation:

<http://www.fao.org/countryprofiles/index.asp?subj=3&iso3=ESP>

Footnotes:

- Total fertility rate is an estimate of the number of children an average woman would have if current age-specific fertility rates remain constant during her reproductive years.
- In deaths per 1,000 live births. Infant mortality rate refers to children under one year of age.
- Data are for the most recent year within the range specified.

View more Country Profiles on-line at <http://earthtrends.wri.org>



Gross Domestic Product, 2000

	Spain	Europe	World
GDP in million constant 1995 US dollars	702,395	11,139,956	34,109,900
GDP PPP (million current international dollars) {a}	768,454	11,770,626	44,913,910
Gross National Income (PPP, in million current international dollars), 2000 {a}	759,983	11,666,729	44,458,520
GDP per capita, 2000			
in 1995 US dollars	17,599	15,327	5,632
in current international dollars	19,255	16,525	7,416
Average annual growth in GDP, 1991-2000			
Total	2%	2%	3%
Per capita	2%	1%	1%
Percent of GDP earned by:			
Agriculture, 2000	4%	X	X
Industry, 2000	31%	X	X
Services, 2000	66%	X	X

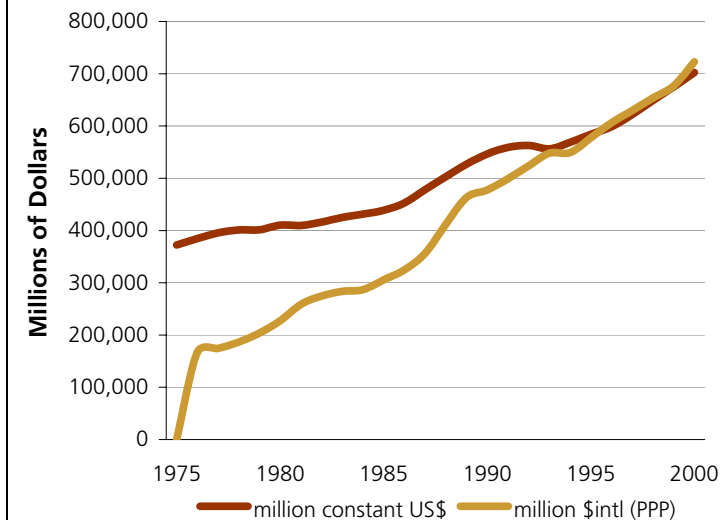
International Trade

	Spain	Europe	World
Trade in Goods and Services (million current \$US)			
Imports, 2000	X	X	X
Exports, 2000	X	X	X
Exports as a percent of GDP, 2000	30%	35%	X
Balance of Trade, 2000 (million current \$US)	-12,903	83,636	X

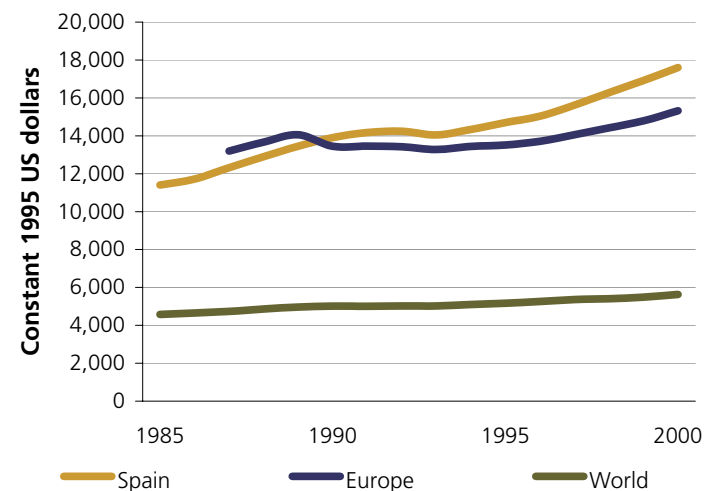
Official Development Assistance (ODA) and Financial Flows

	Spain	Europe	World
ODA in million US dollars, 1998-2000 {b}	X	X	59,073
ODA per capita in US dollars, 1998-2000 {b}	X	4	10
Current Account Balance (million \$US), 2000	-17,257	X	X
Total external debt, million \$US, 1998-2000 {b}	X	X	X
Debt service as a % of export earnings, 1995-97 {b}	X	X	X
Foreign Direct Investment, net inflows (million current \$US), 2000	36,023	642,535	X
International Tourism Receipts, 1995-1997 (million \$US)	26,553	X	X

Gross Domestic Product, Spain, 1975-2000



GDP per capita, 1985-2000



View more Country Profiles on-line at <http://earthtrends.wri.org>

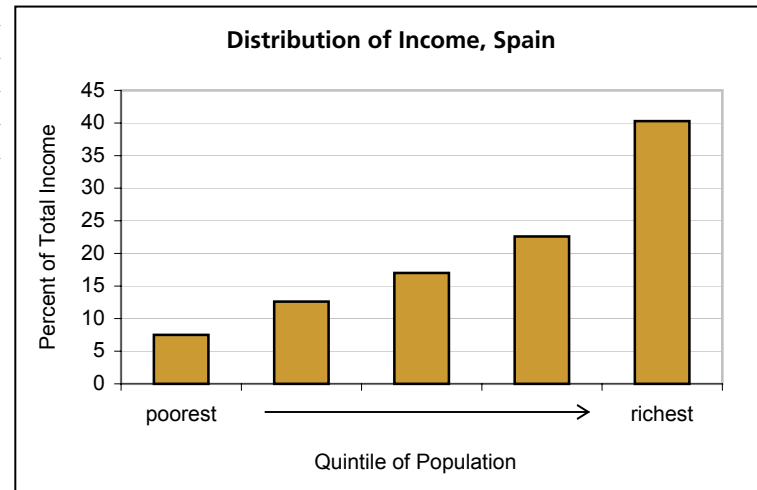
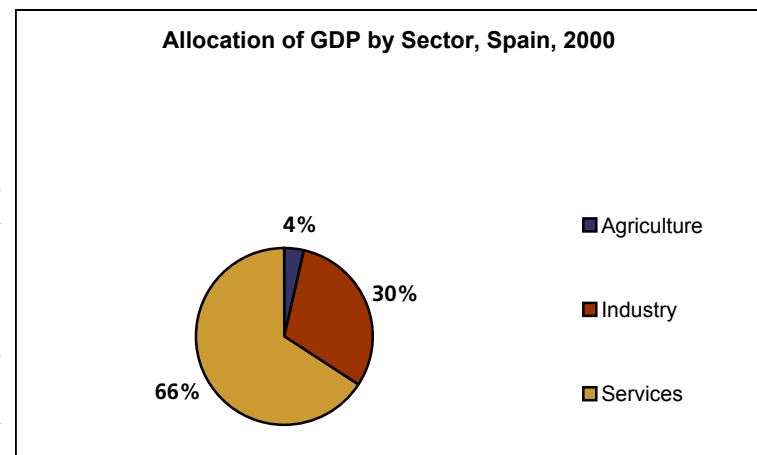
Economic Indicators -- Spain

	Spain	Europe	World
National Savings (as a percent of Gross National Income)			
Gross National Savings, 2000	23%	24%	23%
Net National Savings, 2000	10%	9%	X
Adjusted Net Savings, 2000	14%	12%	X
Income Distribution (years vary)			
Gini coefficient (0=perfect equality; 100=perfect inequality)	33	X	X
Percent of total income earned by the richest 20% of the population:	40.3%	X	X
Percent of total income earned by the poorest 20% of the population:	7.5%	X	X
National Poverty Rate	X	X	X
Poverty Rate, Urban Population	X	X	X
Percent of population living on less than \$1 a day	X	X	X
Percent of population living on less than \$2 a day	X	X	X

Other Resources:

Country Profiles of the Food and Agriculture Organization
of the United Nations, Economic Situation:

<http://www.fao.org/fi/fcp/en/ESP/profile.htm>



a. Data are in international dollars, adjusted for purchasing power parity (PPP). PPP rates provide a standard measure allowing comparison of real price levels between countries. b. Data are averaged for the range of years listed.

View more Country Profiles on-line at <http://earthtrends.wri.org>

Carbon Dioxide (CO₂) Emissions {a} (in thousand metric tons of CO₂)

	Spain	Europe	World
Total Emissions, 1998	247,203	5,828,746	24,215,376
Percent change since 1990	17%	X	8%
Emissions as a percent of global CO ₂ production	1.0%	24.1%	
Emissions in 1998 from:			
solid fuels	65,769	1,856,615	8,654,368
liquid fuels	140,943	2,066,415	10,160,272
gaseous fuels	26,568	1,757,789	4,470,080
gas flaring	0	17,986	172,208
cement manufacturing	13,924	129,941	758,448
Per capita CO ₂ emissions, 1998 (thousand metric tons of CO ₂)	6.2	8.0	4.1
Percent change since 1990	16%	X	-2%
CO ₂ emissions (in metric tons) per million dollars Gross Domestic Product {b}, 1998	401	X	773
Percent change since 1990	-1%	X	-10%
Cumulative CO ₂ emissions, 1900-1999 (in billion metric tons)	8,383	369,297	933,686

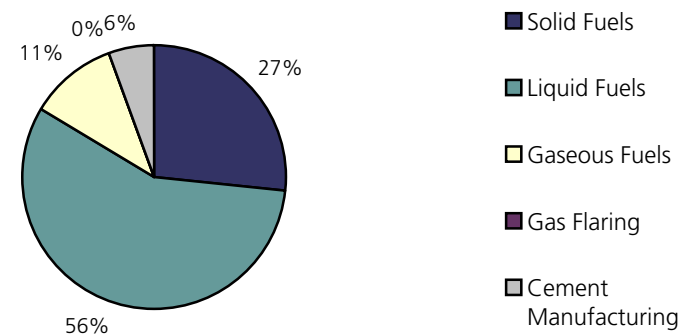
CO₂ Emissions by Sector, 1999 {c} (in million metric tons of CO₂)

Public electricity, heat production, and autoproducers	88	2,349	8,693
Other Energy Industries	14	249	1,205
Manufacturing Industries and Construction	48	1,010	4,337
Transportation	90	1,147	5,505
Residential	16	715	1,802
Other Sectors {d}	X	631	5,640
Total Emissions All Sectors:	X	6,101	27,180

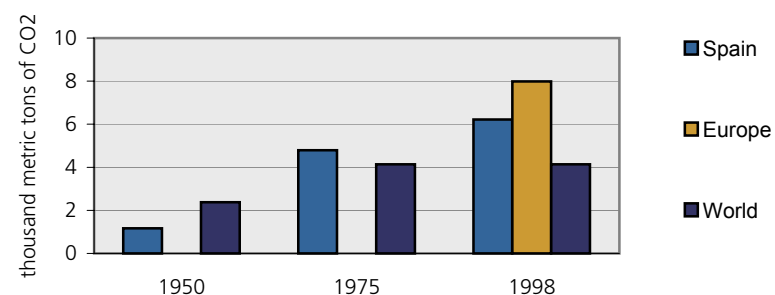
CO₂ Intensity, 1999

Emissions per total energy consumption (metric tons CO ₂ per terajoule energy)	55	55	56
Emissions per Gross Domestic Product {e} (metric tons of CO ₂ /million \$PPP)	395	568	582

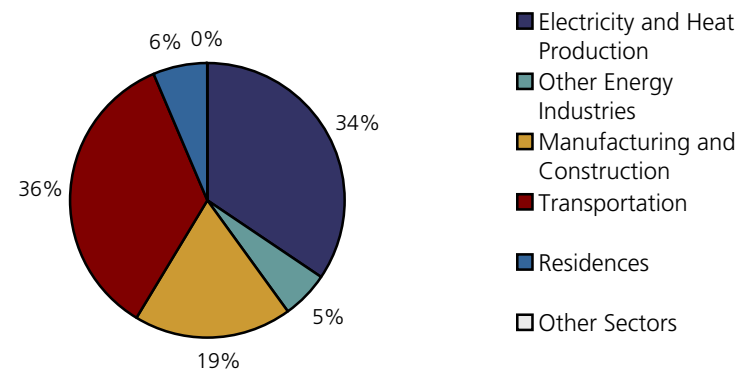
CO₂ Emissions by Source, Spain, 1998



Per Capita CO₂ Emissions: 1950, 1975 and 1998



CO₂ Emissions by Sector, Spain, 1999



View more Country Profiles on-line at <http://earthtrends.wri.org>

Atmosphere and Climate-- Spain

	Spain	Europe	World
Non-CO2 Air Pollution, thousand metric tons			
Sulfur dioxide emissions, 1995	1,544	40,122	141,875
Nitrogen oxide emissions, 1995	1,204	21,991	99,271
Carbon monoxide emissions, 1995	4,933	95,924	852,415
Non-methane VOC emissions {f}, 1995	1,357	35,488	159,634

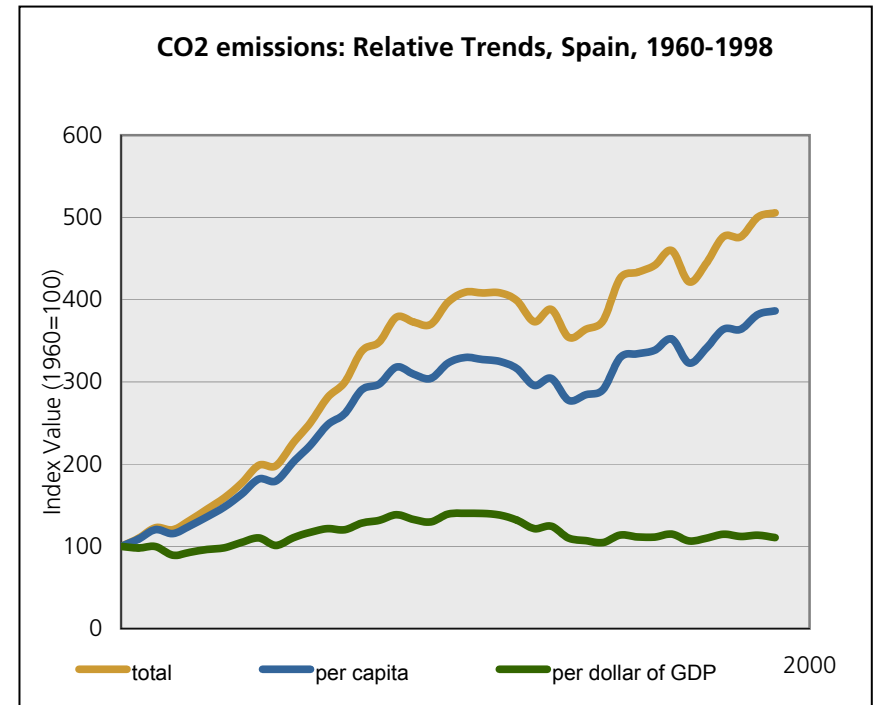
Multilateral Agreements Status as of September 2002

Data show the year each country ratified the agreement, unless labeled as "signed only".

Kyoto Protocol	2002
United Nations Framework Convention on Climate Change (UNFCCC)	1993
Vienna Convention	1988

Other Resources:

Sustainable Development Country Profile of the Food and Agriculture Organization of the United Nations:
<http://www.fao.org/countryprofiles/index.asp?subj=2&iso3=>



Footnotes:

Some footnotes are not incorporated here. Please refer to the Data Tables section of EarthTrends for a full listing.

- Source: Carbon Dioxide Information Analysis Center (CDIAC).
- Constant US dollars.
- Source: International Energy Agency (IEA).
- Includes the commercial sector, agriculture, the public service sector, and international bunkers
- GDP is in 1995 international dollars, adjusted for Purchasing Power Parity.
- VOC: Volatile Organic Compounds.

View more Country Profiles on-line at <http://earthtrends.wri.org>



Energy Production and Consumption

(in thousand metric tons of oil equivalent) {a}

	Spain	Europe	World
Total energy production, 2000	31,865	2,253,336	10,077,984
% change since 1980	102%	152%	37%
Energy imports, 1997	89,804	1,341,347	9,521,506
Energy exports, 1997	8,765	961,926	3,419,104
Total energy consumption {b}, 1999	118,467	2,559,701	9,702,786
Electricity consumption, 1999	15,244	291,148	1,040,770
Energy consumption per capita, 1997	2.71	3.51	1.64
% change since 1990	18%	-14%	0%
Energy consumption per GDP {c}, 1999:	172	243	244
% change since 1990	6%	X	-13%

Energy Consumption by Source, 1999 (in thousand metric tons oil equivalent)

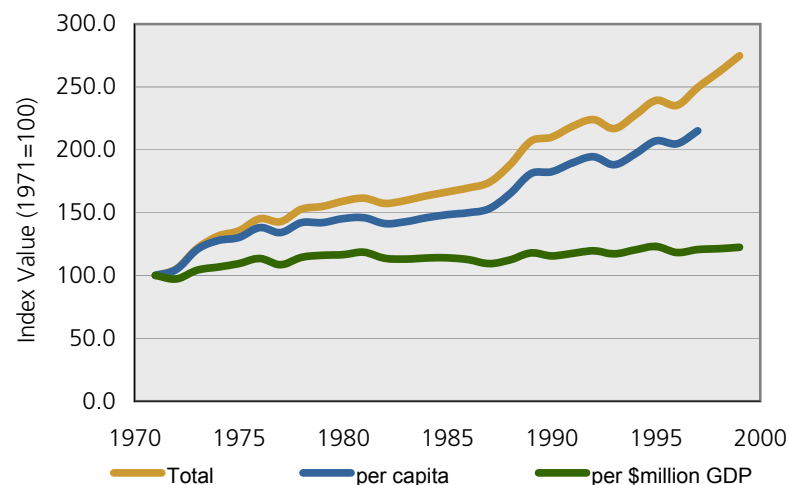
	Spain	Europe	World
Total Fossil Fuels	96,314	2,117,484	7,689,047
Coal and coal products	19,264	480,313	2,278,524
Crude oil and natural gas liquids	60,854	906,066	3,563,084
Natural gas	13,286	786,787	2,012,559
Nuclear	15,337	303,885	661,901
Hydroelectric	1,966	60,847	222,223
Renewables, excluding hydroelectric:	3,981	64,845	1,097,889
Primary solid biomass (includes fuelwood)	3,605	56,374	1,035,139
Biogas and liquid biomass	106	1,919	14,931
Geothermal	4.8	4,886	43,802
Solar	29.4	390	2,217
Wind	236.0	1,227	1,748
Tide, wave, and ocean	0.0	50	53

Energy Consumption by Sector, 1999

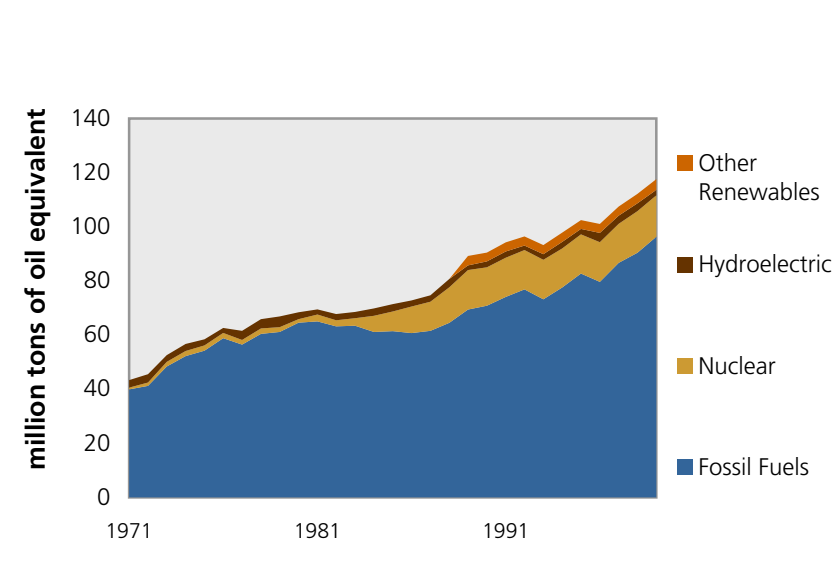
(in thousand metric tons of oil equivalent)

	Spain	Europe	World
Industry	26,328	569,813	2,140,474
Transportation	32,652	451,881	1,755,505
Agriculture	2,233	51,724	166,287
Commercial & public services	5,908	154,692	511,555
Residential	11,876	477,196	1,845,475
Non-energy uses and "other" consumption	4,186	76,515	333,981
Total final energy consumption {d}	83,184	1,781,820	6,753,276

Energy Consumption: Relative trends, Spain, 1971-1999



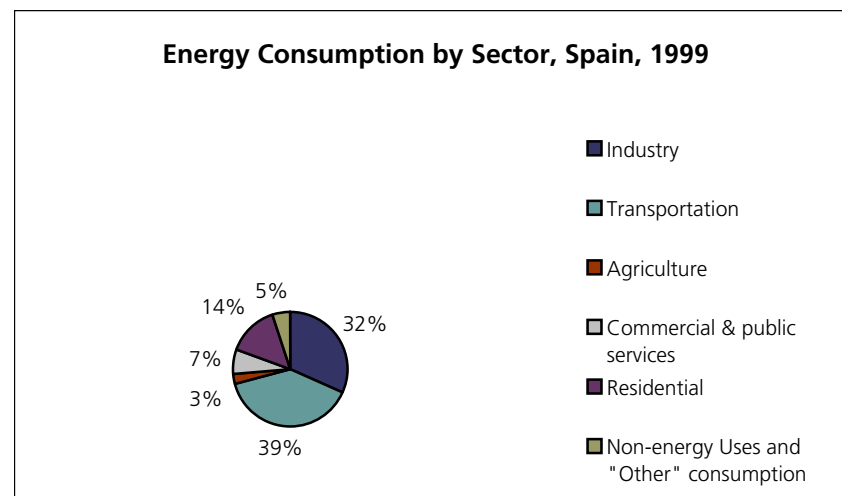
Energy Consumption by Source, Spain, 1971-1999



View more Country Profiles on-line at <http://earthtrends.wri.org>

Energy and Resources-- Spain

	Spain	Europe	World
Resource Consumption			
Passenger cars per 1000 people, 1998	X	X	109
Annual motor gasoline consumption, 2000 (liters per person)	285	290	179
Annual meat consumption, 1998 (kg per person)	111	72	38
Annual paper consumption, 2000 (kg per person)	167	133	53
Annual coffee consumption, 2001 (kg per person)	4	X	X



Footnotes:

- One metric ton of oil equivalent (toe) is defined as 10 Exp. 7 kilocalories or 41.868 gigajoules, equal to the amount of energy contained in 1 metric ton of crude oil.
- In metric tons of oil equivalent per million constant 1995 international dollars.
 $TPES = \text{Energy Production} + \text{Imports} - \text{Exports} - \text{Stock Changes} - \text{Consumption by International Marine Bunkers}$
- In metric tons of oil equivalent per million constant 1995 international dollars.
- "Total final consumption" is calculated as the sum of energy consumption by sectors.

View more Country Profiles on-line at <http://earthtrends.wri.org>