
Test Your Tech

Navigation is:

- A. Following a series of links to locate specific information on the Web.
- B. Finding your uncle's mountain cabin in dense fog.
- C. Avoiding rush-hour traffic during the World Series.

Test Your Tech

Navigation is:

- A. Following a series of links to locate specific information on the Web.
- B. Finding your uncle's mountain cabin in dense fog.
- C. Avoiding rush-hour traffic during the World Series.

Announcements

- Due by Today
 - Chapters 5-6 in *Fluency*
- Due Tuesday
 - HW2
- Due by Wednesday

Networking and Client-Server Architecture

How the Web works....

Protocols

- List as many as you can think of....
 - Example—http

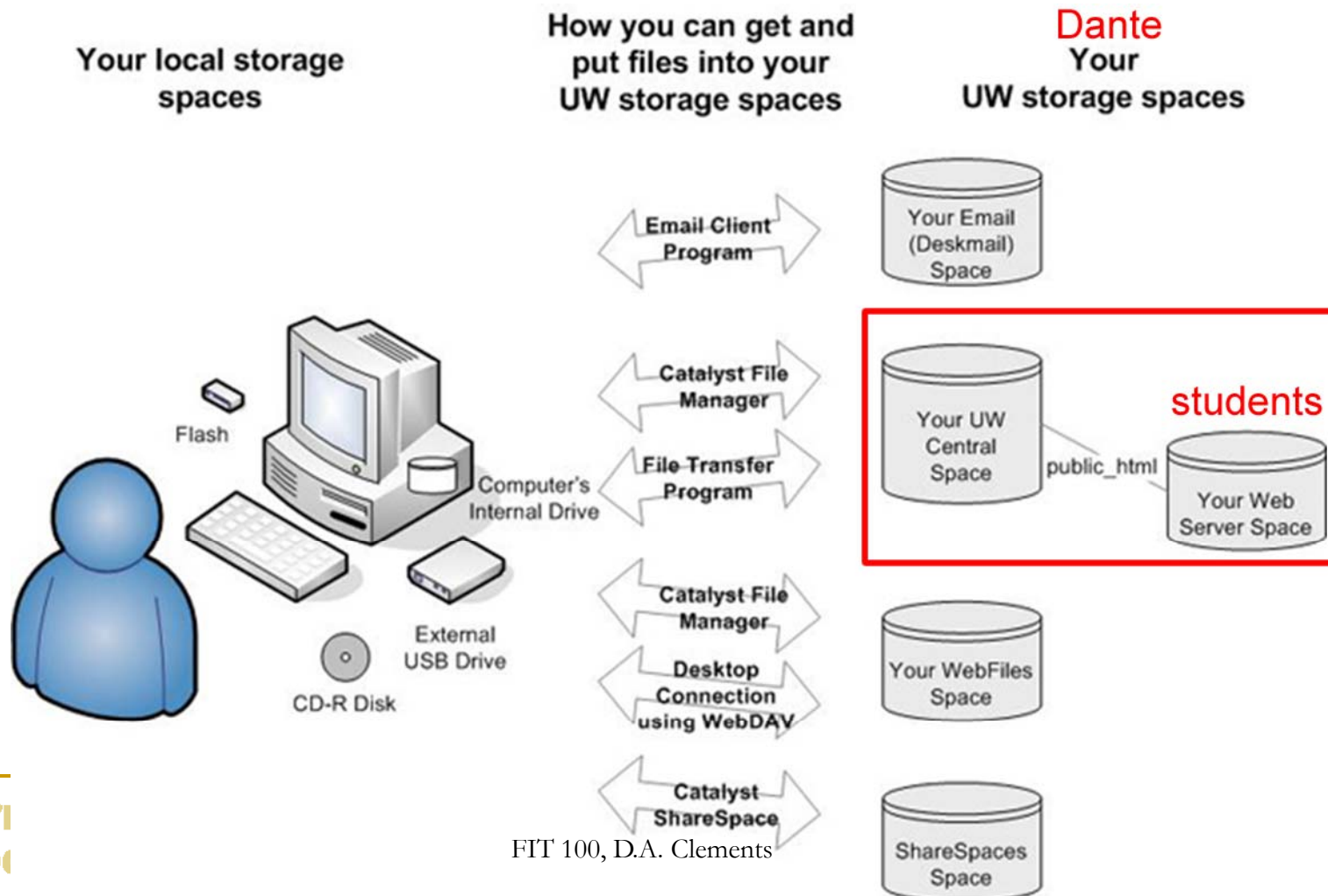
WWW vs. Internet

- Internet is all the wires, routers, gateways, servers—all using TCP/IP to transfer packets
- Many different protocols use the Internet
 - ftp, email, chat, IM, Skype, VoIP, http

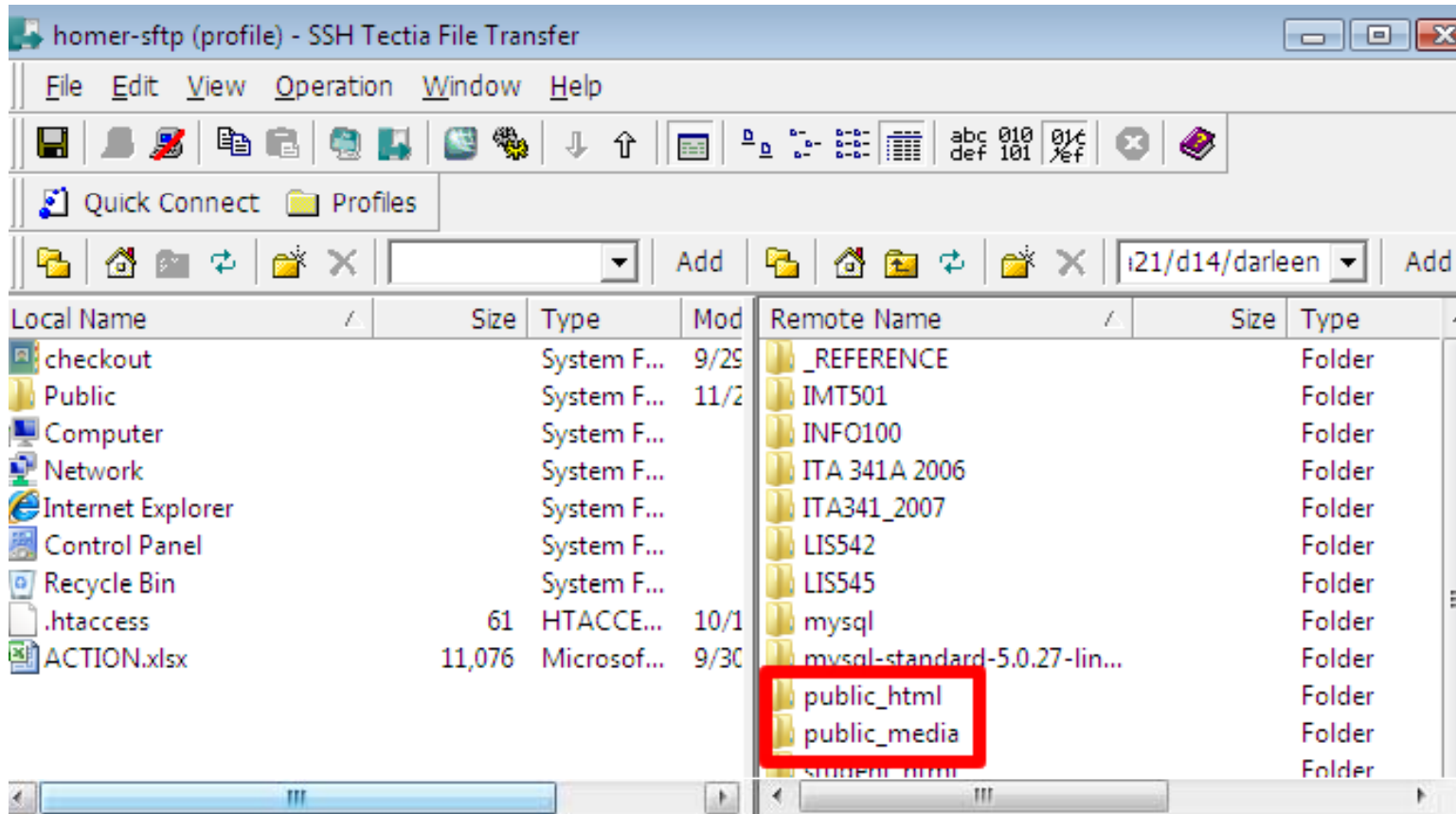
WWW vs. Internet

- WWW is the part of the Internet that uses the http protocol
 - Web servers and the Web pages they store and serve
 - Web browsers are the clients

Your UW Storage Space



Your Web Files



HTTP

- **H**yper**T**ext **T**ransfer **P**rotocol
 - Understands how to interpret URLs
 - Uniform Resource Locators
 - Divides URL into server and pathname

HTTP

<http://faculty.washington.edu/daclem/LIS549sp08/index.html>

**PROTOCOL
(Web)**

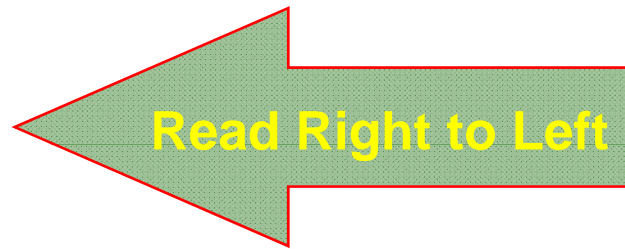
HTTP

<http://faculty.washington.edu/daclem/LIS549sp08/index.html>

PROTOCOL

SERVER

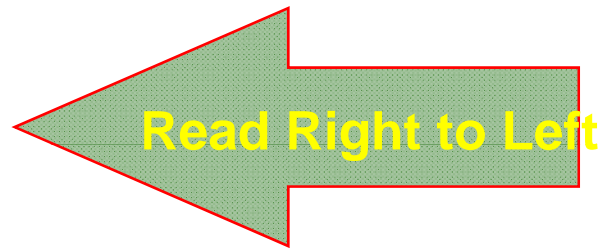
HTTP



<http://faculty.washington.edu/daclem/LIS549sp08/index.html>

PROTOCOL SERVER

HTTP



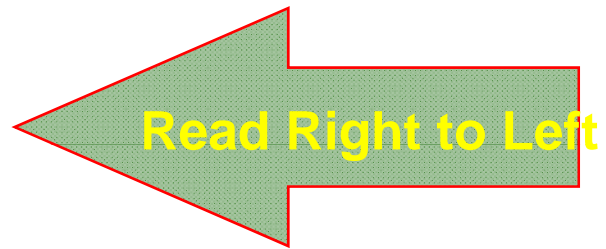
<http://faculty.washington.edu/daclem/LIS549sp08/index.html>

PROTOCOL

SERVER

1. Domain: **edu**

HTTP



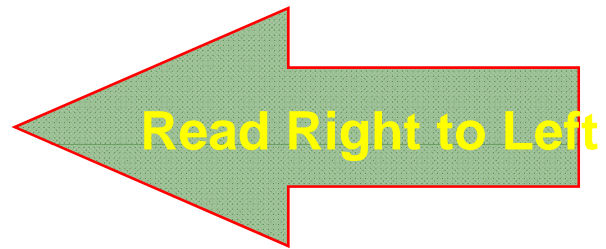
<http://faculty.washington.edu/daclem/LIS549sp08/index.html>

PROTOCOL

SERVER

1. Domain: **edu**
2. Subdomain: **washington**

HTTP



<http://faculty.washington.edu/daclem/LIS549sp08/index.html>

PROTOCOL

SERVER

1. Domain: **edu**
2. Subdomain: **washington**
3. Server: **faculty**

HTTP

<http://faculty.washington.edu/daclem/LIS549sp08/index.html>

PROTOCOL

SERVER

PATHNAME

1. Domain: edu
2. Subdomain: washington
3. Server: faculty

HTTP



Read Left to Right

<http://faculty.washington.edu/daclem/LIS549sp08/index.html>

PROTOCOL

SERVER

PATHNAME

1. Domain: edu
2. Subdomain: washington
3. Server: faculty

HTTP

Read Left to Right

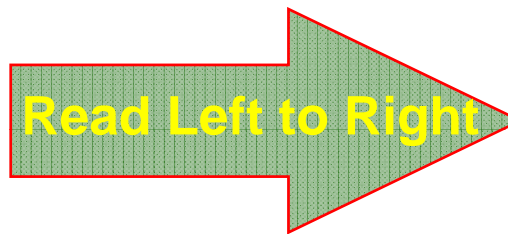
http://faculty.washington.edu/daclem/LIS549sp08/index.html		
PROTOCOL	SERVER	PATHNAME
	<ol style="list-style-type: none">1. Domain: edu2. Subdomain: washington3. Server: faculty	<ol style="list-style-type: none">4. Account: daclem

Information School
University of Washington

FIT 100, D.A. Clements

19

HTTP



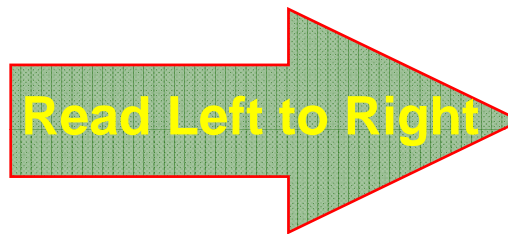
http://faculty.washington.edu/daclem/LIS549sp08/index.html		
PROTOCOL	SERVER	PATHNAME
	1. Domain: edu	4. Account: daclem
	2. Subdomain: washington	5. Folder: LIS549sp08
	3. Server: faculty	

Information School
University of Washington


FIT 100, D.A. Clements

20

HTTP



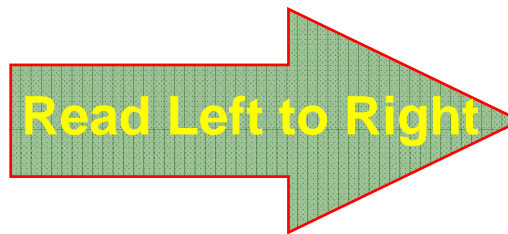
http://faculty.washington.edu/daclem/LIS549sp08/index.html		
PROTOCOL	SERVER	PATHNAME
	1. Domain: edu	4. Account: daclem
	2. Subdomain: washington	5. Folder: LIS549sp08
	3. Server: faculty	6. File: index.html

 Information School
University of Washington

FIT 100, D.A. Clements

21

HTTP



http://faculty.washington.edu/daclem/LIS549sp08/index.html		
PROTOCOL	SERVER	PATHNAME
	1. Domain: edu	4. Account: daclem
	2. Subdomain: washington	5. Folder: LIS549sp08
	3. Server: faculty	6. File: index.html

Finding Server and Pathname

<http://courses.washington.edu/wtcampus/autumn/>

- **Finding the Server:**

1. Domain: **edu**
2. Subdomain: **Washington**
3. Server: **courses**

- **Finding the Pathname:**

4. Account: **wtcampus**
5. Directory: **autumn**

Activity

- Dissecting URLs....

SSH Secure File Transfer (SFTP)

- Copy files between two computers
- Use it at home or anywhere



Why use SFTP?

Advantages:

- Secure, encrypted transfers
- Remote access from anywhere
- Network space (storage/backup)
 - Dante = 300MB

1 CD-ROM \approx 700MB

1 DVD \approx

Single-sided: 4700MB (4.6GB)

Double-sided: 9400MB (9.2GB)

What can I connect to?

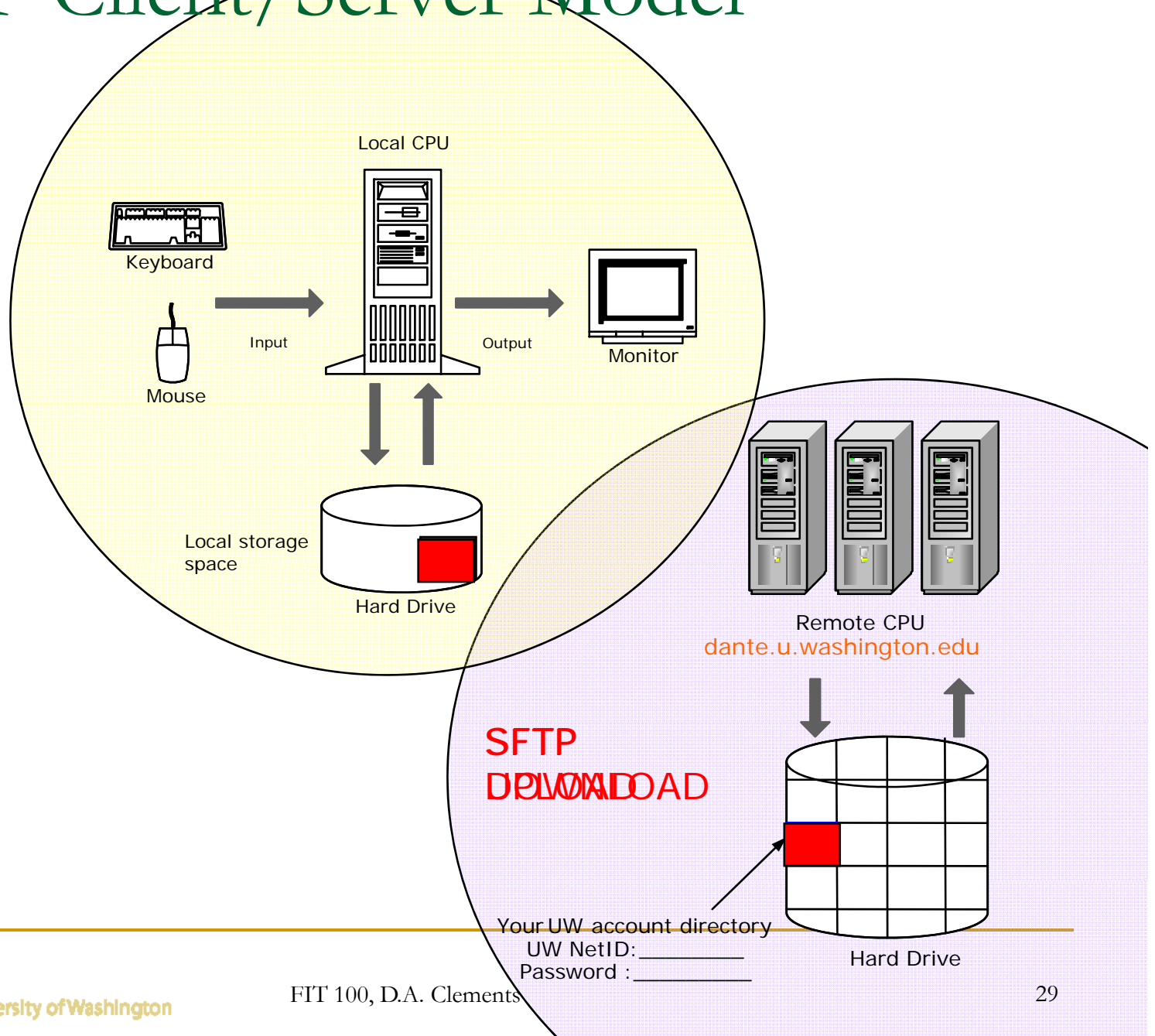
- UW SFTP Servers
 - dante.u.washington.edu for students
 - homer.u.washington.edu for faculty & staff
- Maybe your own ISP?

SFTP Client/Server Model

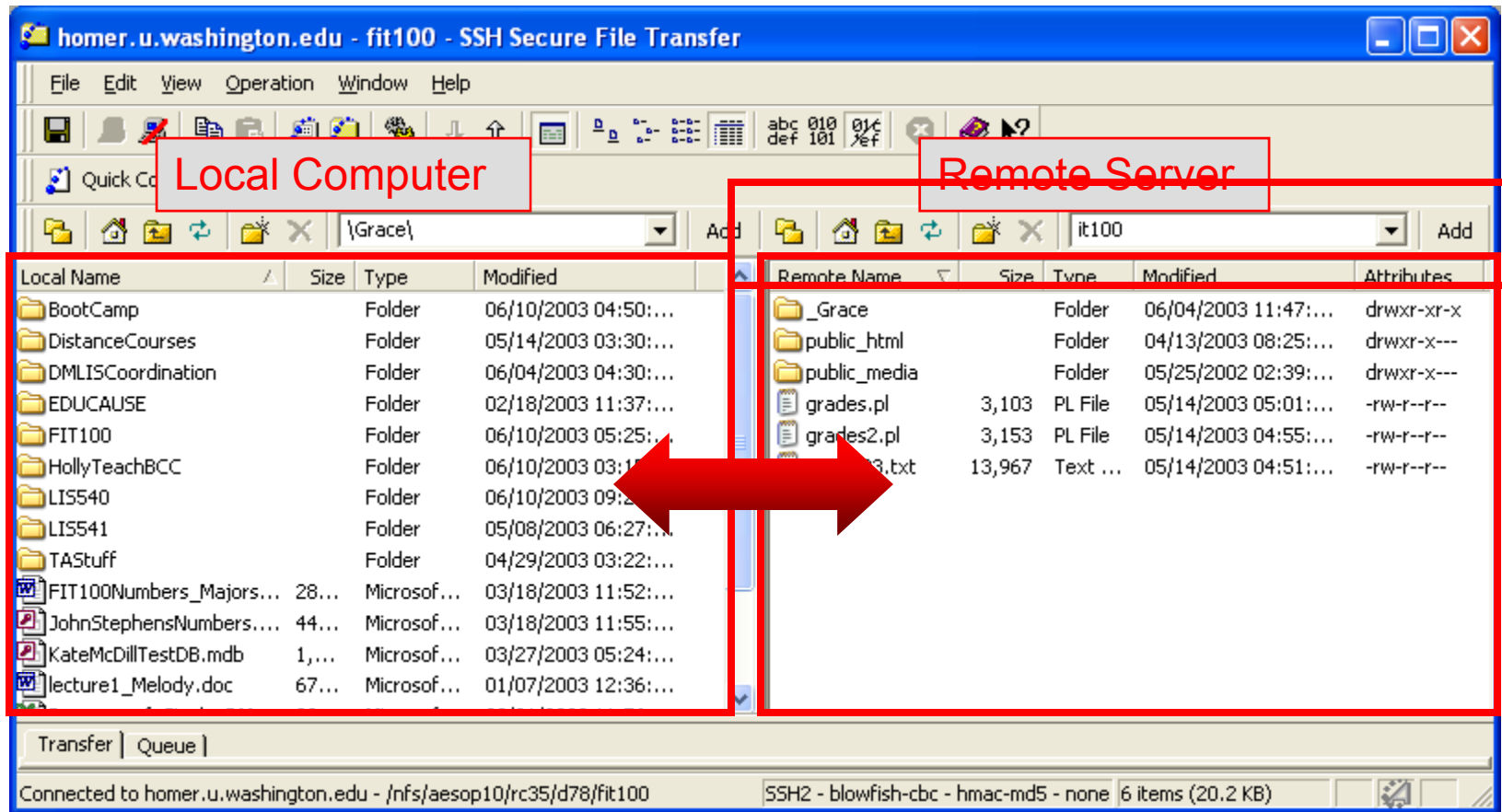
Copy files to a server
and
access them from

- Any computer!
- Anywhere!

SFTP Client/Server Model



SFTP Interface



Video

- Warriors of the Net