



Regional Planning in the Central Puget Sound

- **Regional planning and coordination**
- **Region's response to growth and change**
- **Regional vision and policy**
- **Progress and challenges**
- **Effort to update VISION 2020: regional growth, economic and transportation planning framework**

Puget Sound Regional Council
PSRC



11/01/2007

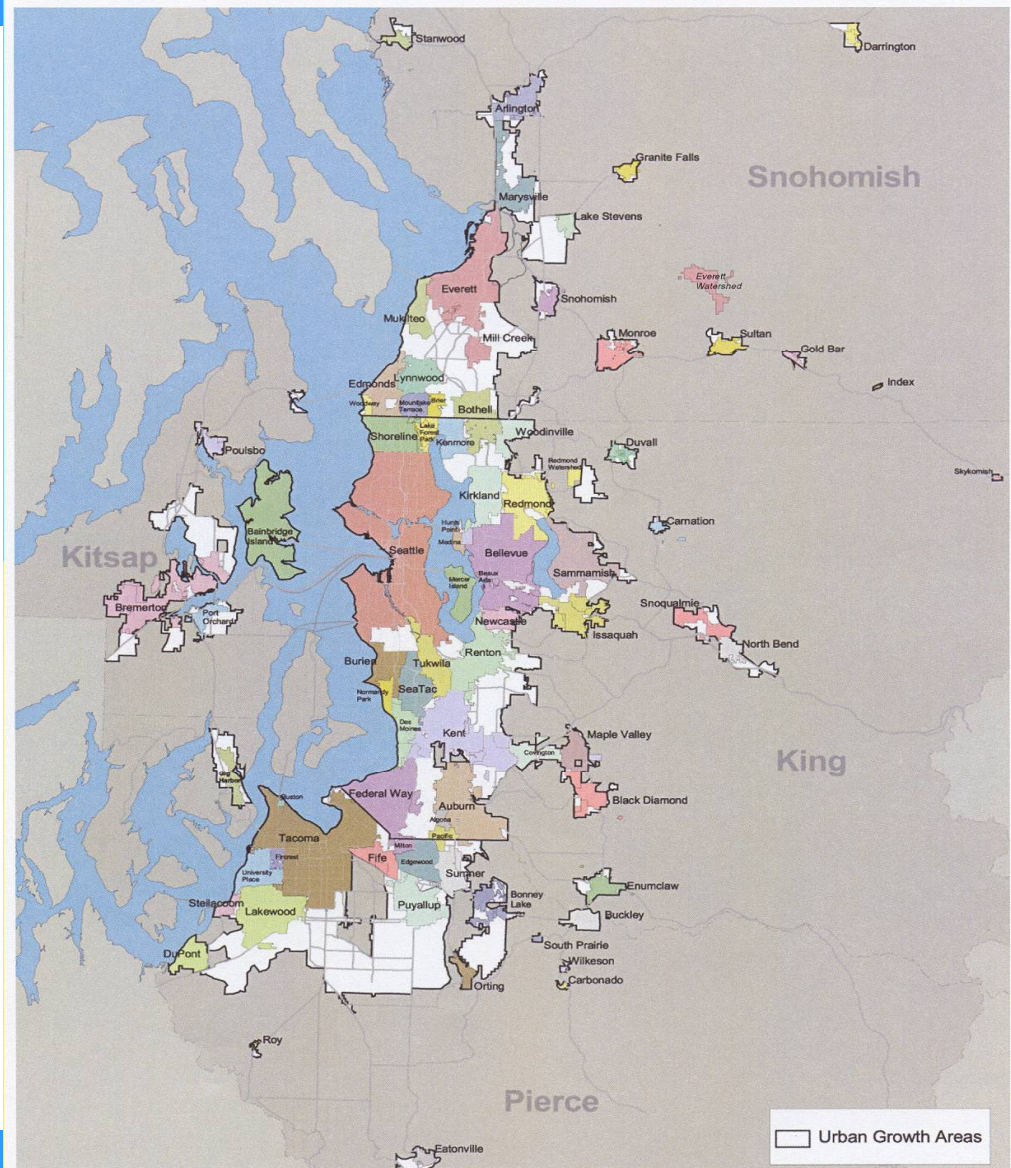


Puget Sound Regional Council

Membership

- King, Kitsap, Pierce & Snohomish counties
- 70 cities
- 3 ports
- Tribes
- 2 state agencies
- 7 transit agencies
- Associate members
(adjacent counties & University of Washington)

Cities and Counties in Central Puget Sound Region





Organization and Decision Making

Relationships of PSRC Policy Bodies

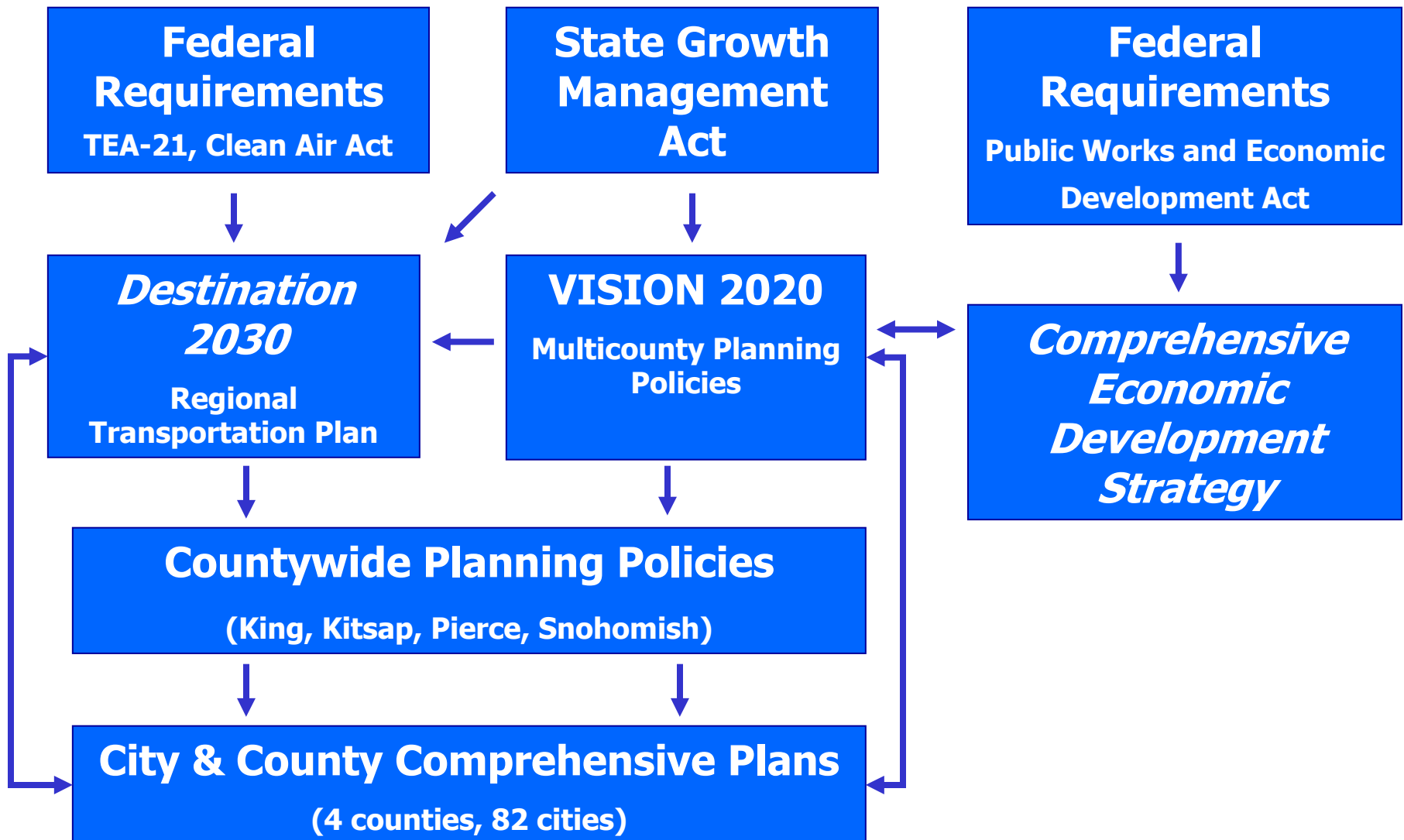
*Annual mtg
for budget &
plan actions*

*Day-to-day
operations &
policy actions*





Shared Responsibility For Urban and Regional Planning





Puget Sound Regional Council

- Long range growth, economic and transportation planning
- Multicounty Planning Policies
(under Washington State Growth Management Act)
- Transportation funding
(approximately \$160 million annually)
- Economic planning & funding
(under Comprehensive Economic Development Strategy)
- Review of local comprehensive plans & countywide policies
- Regional data





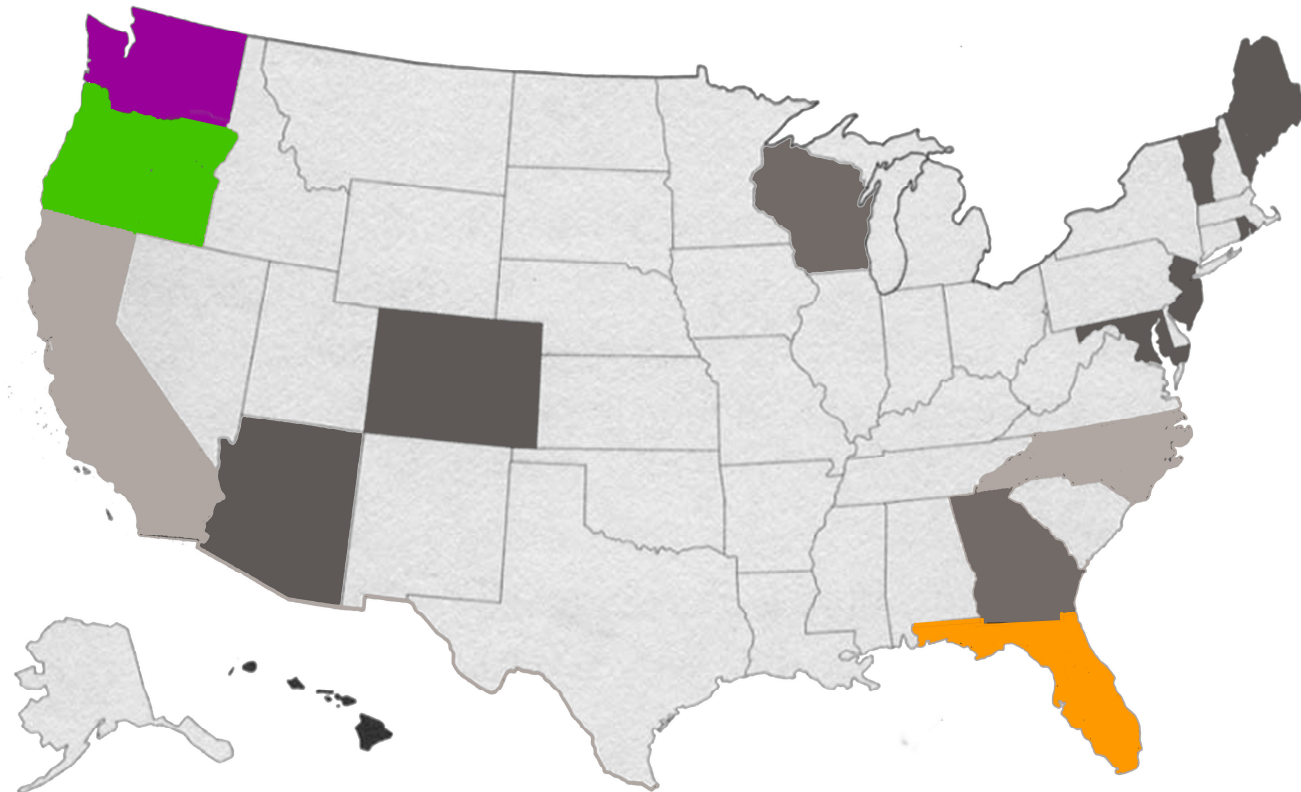
Typology of Intergovernmental Relations

Urban Regional Context (USA)

APPROACHES TO RELATIONSHIPS	FRAGMENTED	PARTIALLY INTEGRATED	INTEGRATED
FINANCIAL	Intergovernmental Grants	Tax-Base Sharing	
FUNCTIONAL	Negotiation & Mediation	Intergovernmental Agreements Special Purpose Districts Transfer of Functions	Metropolitan Service Districts
STRUCTURAL	Councils of Governments	Federated Governments Strengthen Existing County Government Regional Service Authorities Metropolitan Councils Consolidate Similar Units of Governments Annexations	Metropolitan Government City-County Consolidation



Growth Management & Planning Laws by State



Florida



Oregon



Washington



Other growth management states

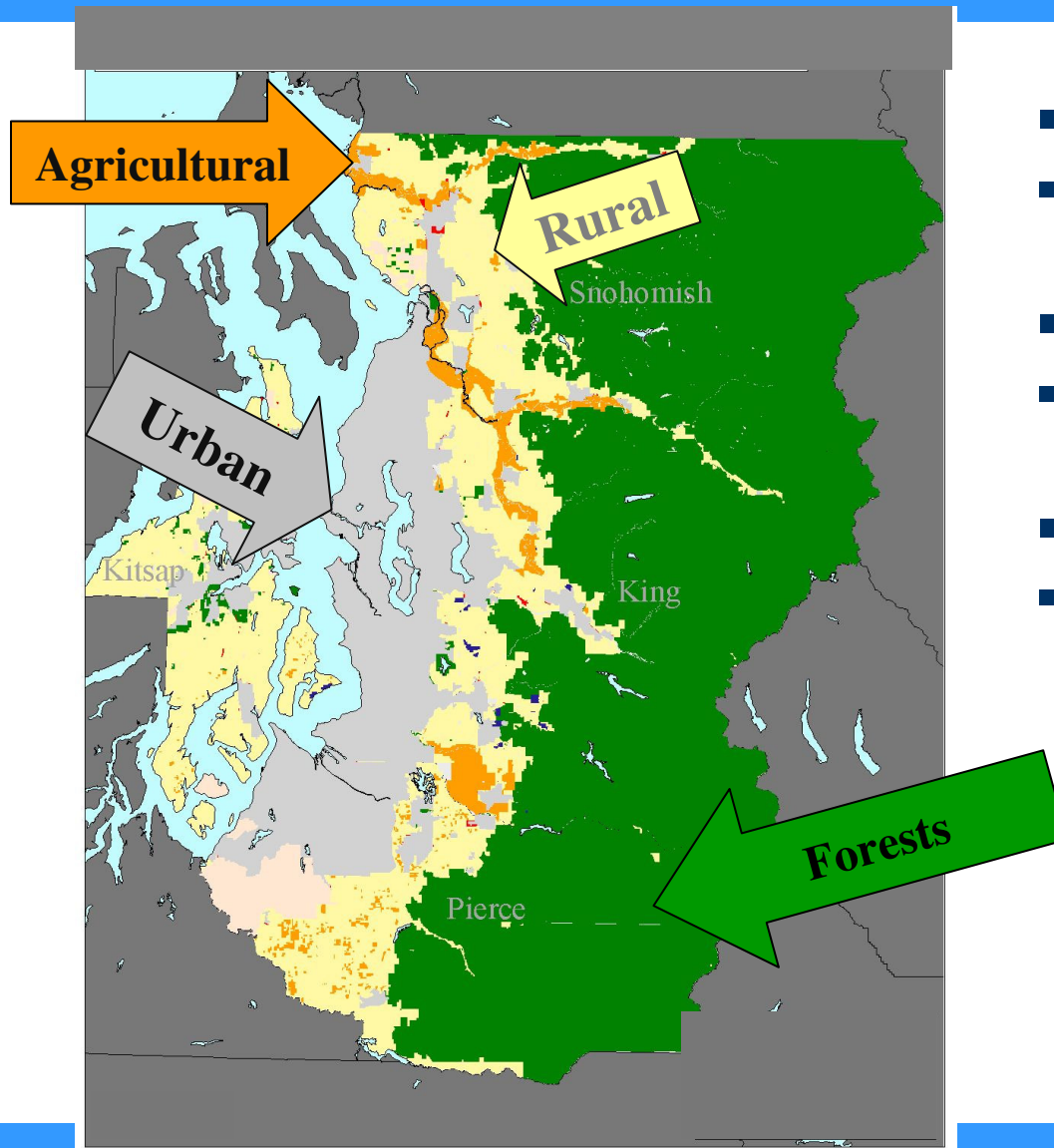


States with shoreline/coastal laws



Planning enabling act states

Basic Building Blocks of the Landscape under GMA

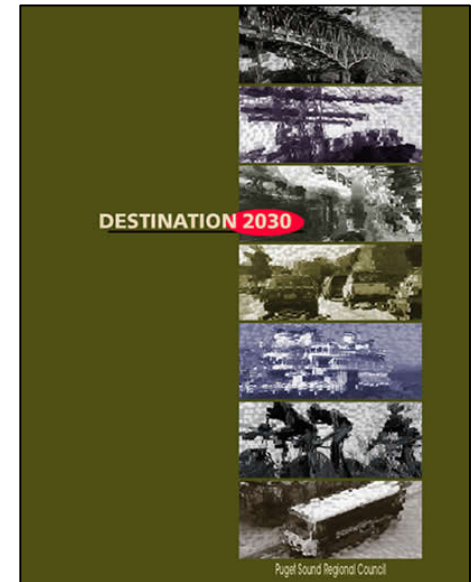


- **URBAN LANDS**
▪ *(RCW 36.70A.110)*
- **RESOURCE LANDS**
▪ *(RCW 36.70A.170)*
- **RURAL LANDS**
▪ *(RCW 36.70A.070(5))*



Regional Framework for Growth

- **VISION 2020** – region's integrated strategy for growth, transportation, and economics; multicounty planning policies
- **Destination 2030** – regional metropolitan transportation plan under GMA, TEA-21, SAFETEA-LU
- **Regional Economic Strategy**

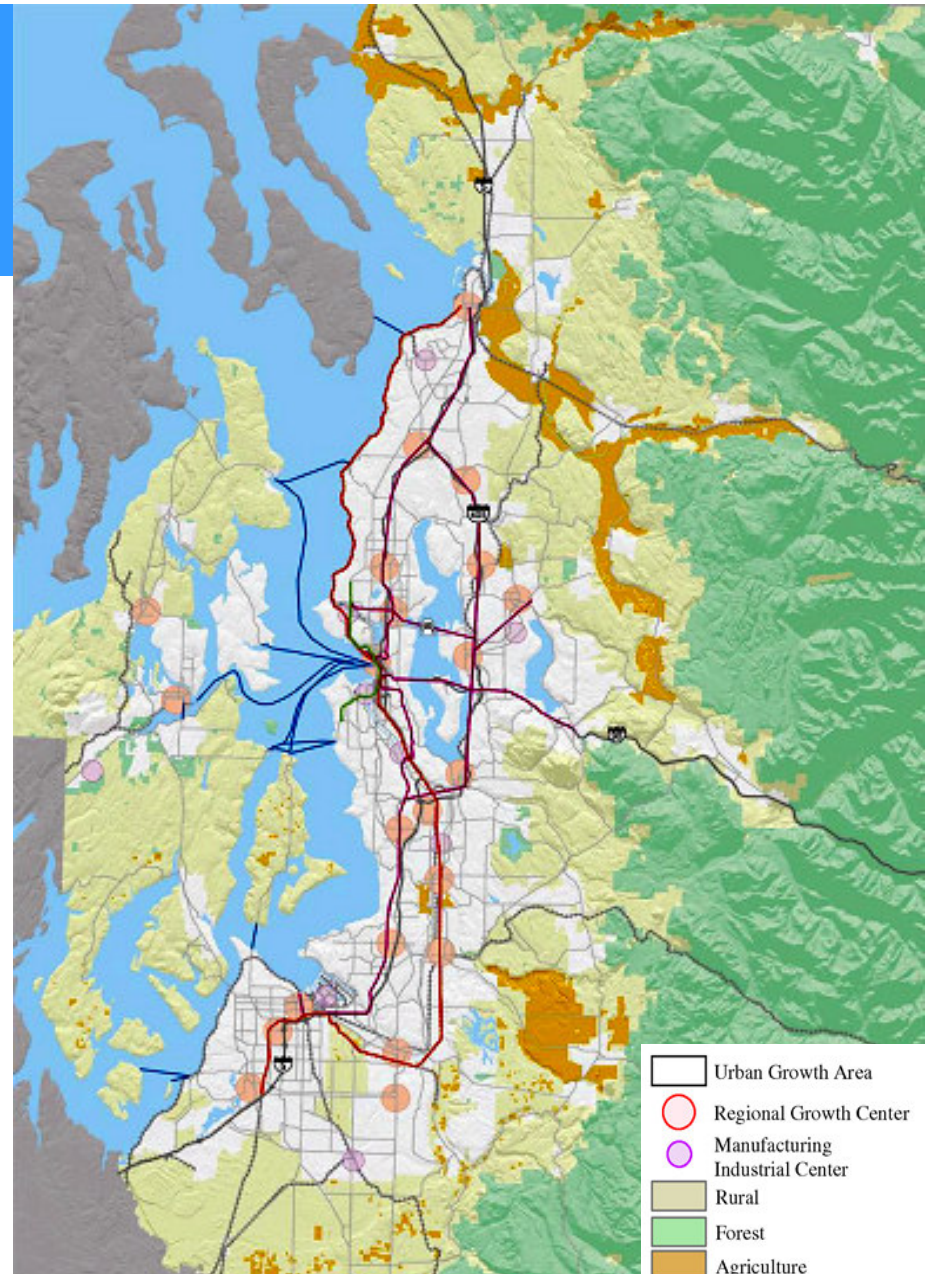




VISION 2020



- Regional agreement on overarching vision integrating growth management, economic and transportation goals
- Growth in UGA, centers focus
- Link centers and urban areas with multimodal transportation system; incorporate federal transportation objectives
- Support economic development
- Environmental responsibility
- Preserve rural and resource lands

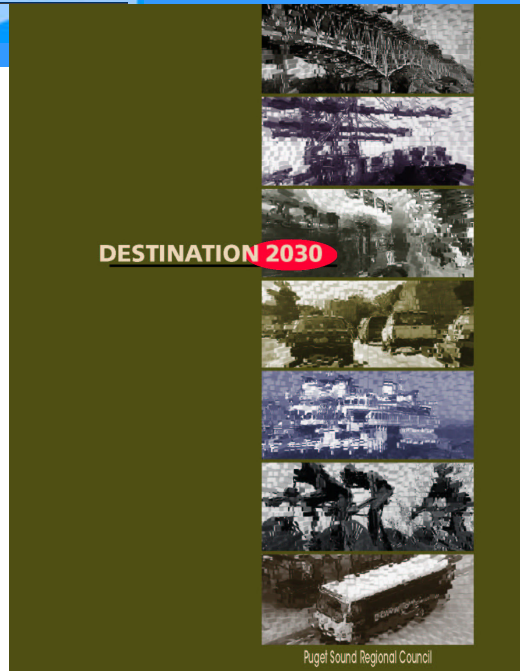


Urban Growth Area

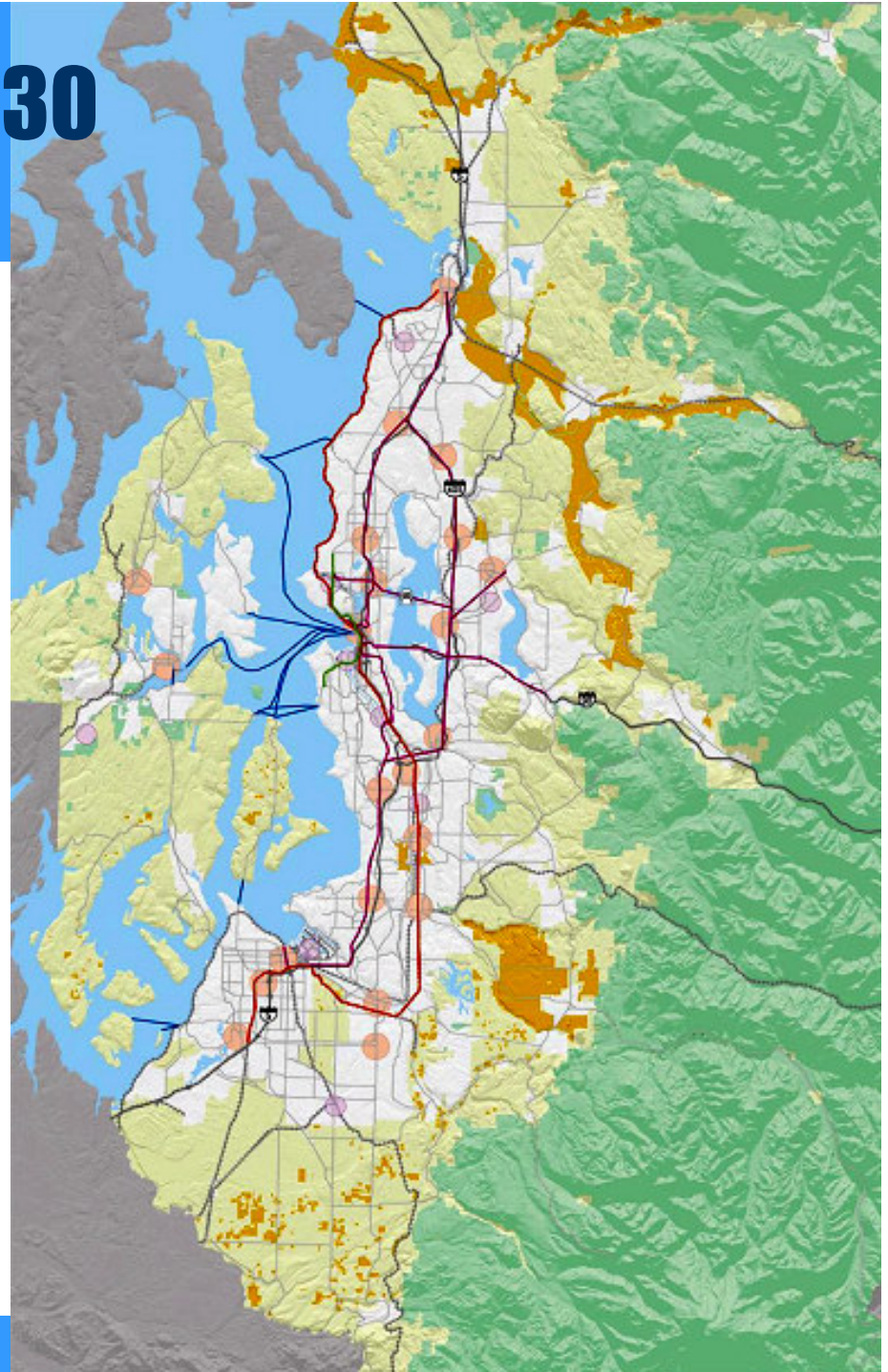
980 square miles - 16 % of total land area of 4-county region



Destination 2030



- Region's long-range metropolitan transportation plan
- Detailed 10-year action plan & long range goals
- Financing plan
- Regional project list





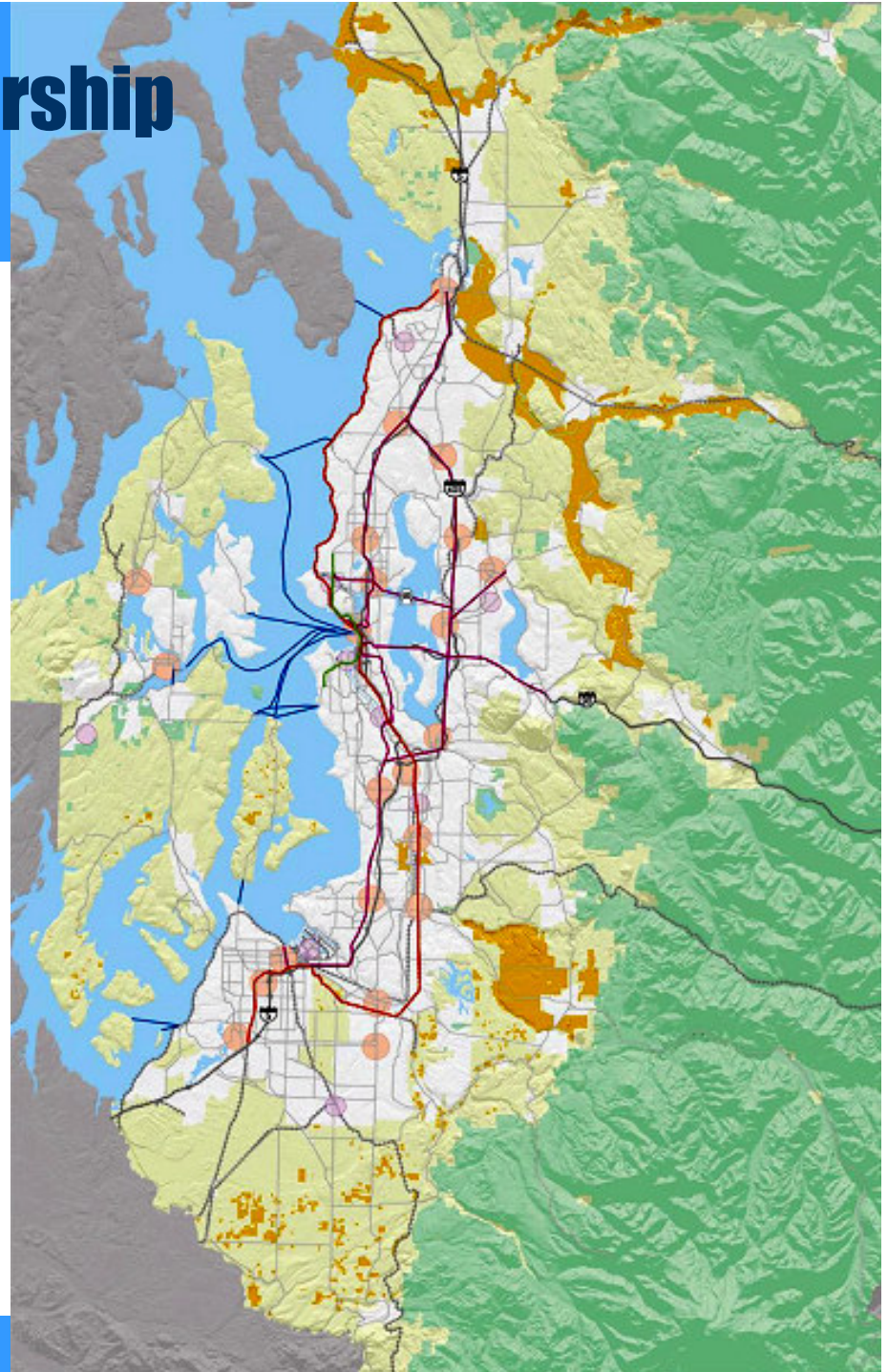
Prosperity Partnership

Regional Economic Strategy



- Regional Economic Strategy (2005)
- *Foundation Initiatives* – redevelop region's economic foundations
- *Cluster Initiatives* – address needs of specific industry clusters

[Aerospace, Clean Technology, Information Technology, Life Sciences, Logistics & International Trade, Tourism Military]





27 Designated Regional Growth Centers

King County (17)

- Auburn
- Bellevue
- Burien
- Federal Way
- Kent
- Redmond (2)
- Renton
- Seattle (6)
- SeaTac
- Totem Lake
- Tukwila

Kitsap County (2)

- Bremerton
- Silverdale

Pierce County (5)

- Lakewood
- Puyallup (2)
- Tacoma (2)

Snohomish County (3)

- Canyon Park
- Everett
- Lynnwood

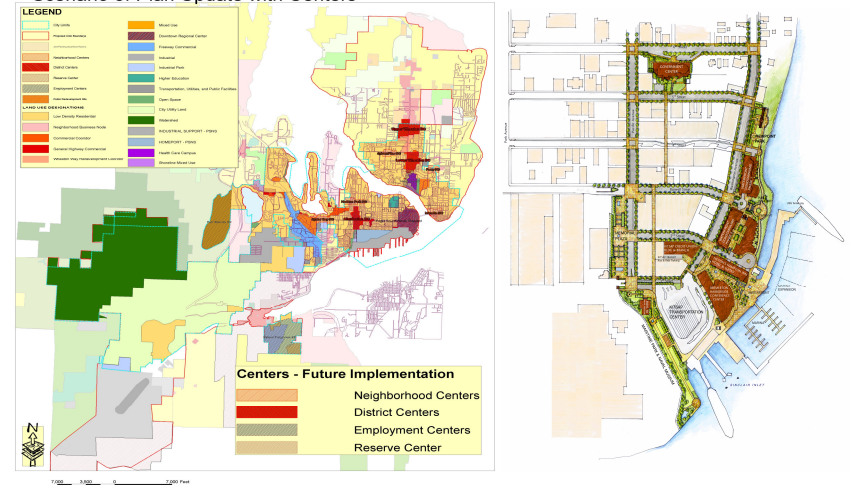


Objectives of Centers Strategy

Even if relatively modest percentage of overall future growth attracted to centers, the region would:

- Use urban land & services more efficiently – improve access to services and housing choices
- Relieve congestion - reduce growth of future automobile trips
- Enable more people to walk, bike & take transit to nearby destinations
- Reinforce framework for regional transportation system

Shaping Bremerton
Scenario 3: Plan Update with Centers





Increasingly Successful Urban Centers



- Auburn, Bellevue, Bremerton, Kent, Renton, Seattle, Tacoma
- Revitalized and new city centers
- Vibrant downtown neighborhoods throughout region



Urban Centers Progress



■ 27 Designated Urban Centers

- 3% of UGA land area (25+ mi²)
- 6% of UGA population (160,000+)
- 34% of UGA jobs (490,000+)
- Average pop. density double UGA's
- 2000 – 2005: 15,000 permitted new housing units (10% of regional housing permits)

■ Planned Land Use in Centers (2025 targets)

- Current Plans double present population (160,000+ additional people, 80,000+ HU)
- Current Plans add 180,000+ jobs

■ Forecasts for Areas Near Centers (2040)

- 13% of forecast 2040 UGA population (630,000+)
- 27% of forecast 2000 – 2040 regional pop. growth
- 40% of forecast 2040 regional jobs



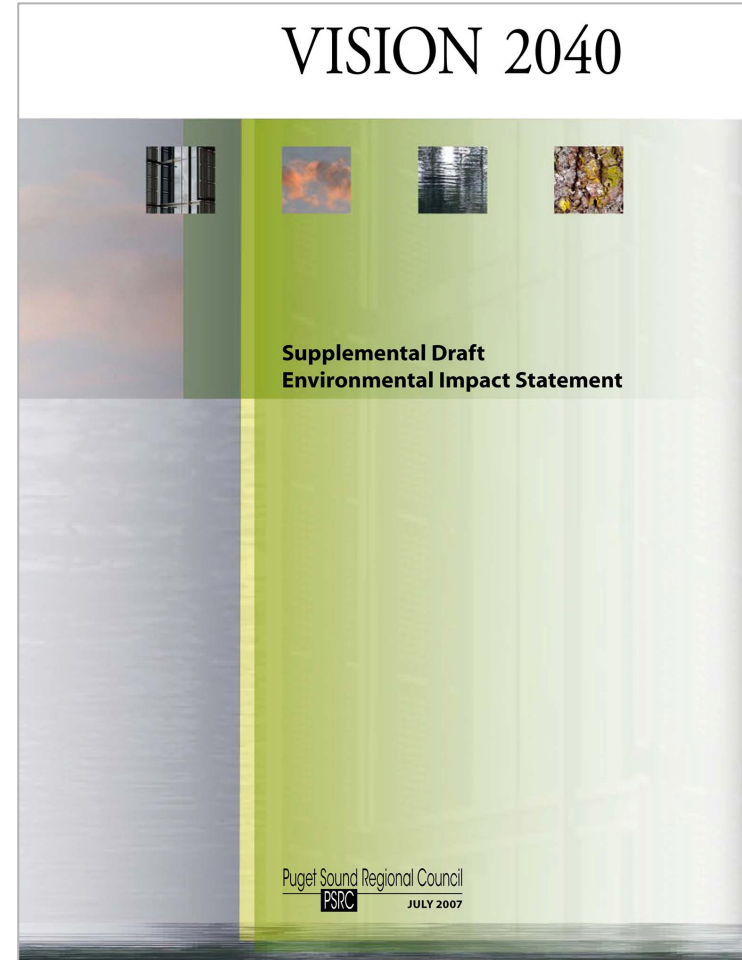
Transportation Progress

- **Nickel Funding Package (2003)**
- **Transportation Partnership Act (2005)**
- **Sound Transit Phase 1:**
 - Regional Express Bus
 - Sounder
 - Tacoma LINK
 - Central LINK is under construction
- **Freight Action Strategy (FAST) Progress**
- **Major Highway Projects Complete/Underway**
- **Metro Transit Now**
- **Proposition 1: RTID/ST2**





Updating VISION 2020 to 2040





Extending Out to 2040: Continued Growth

By 2040 the region will include:

1.6 million more people

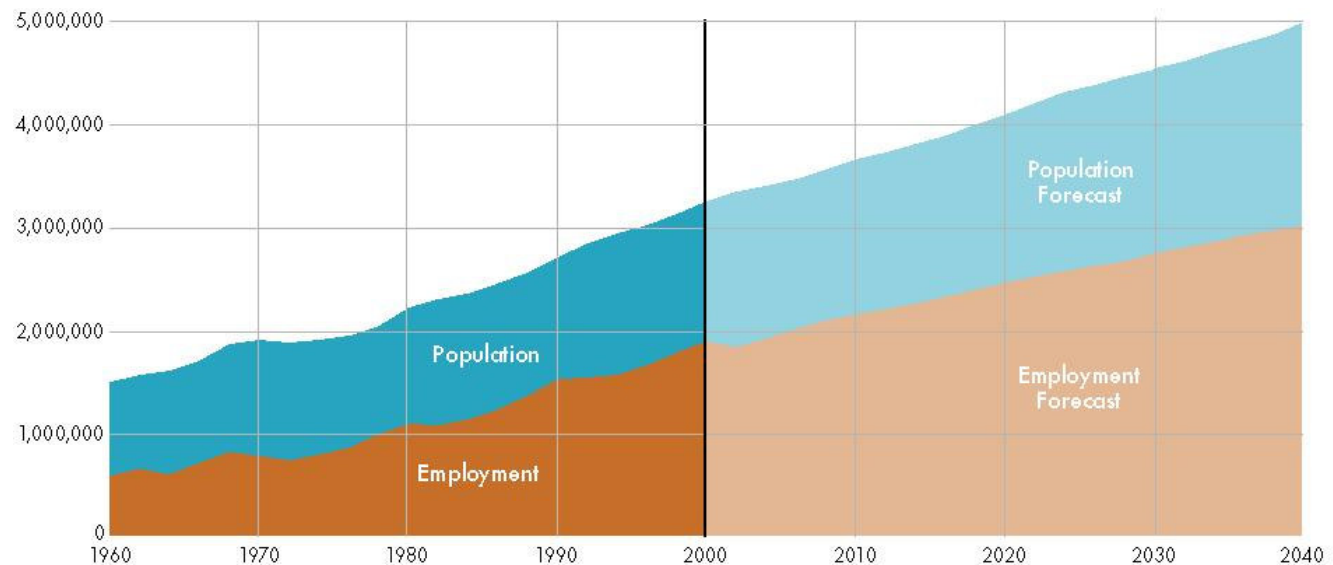
1.1 million more jobs



**Historic
constant
growth rate**

**15 year
regional
analysis**

**National
Econometric
models**

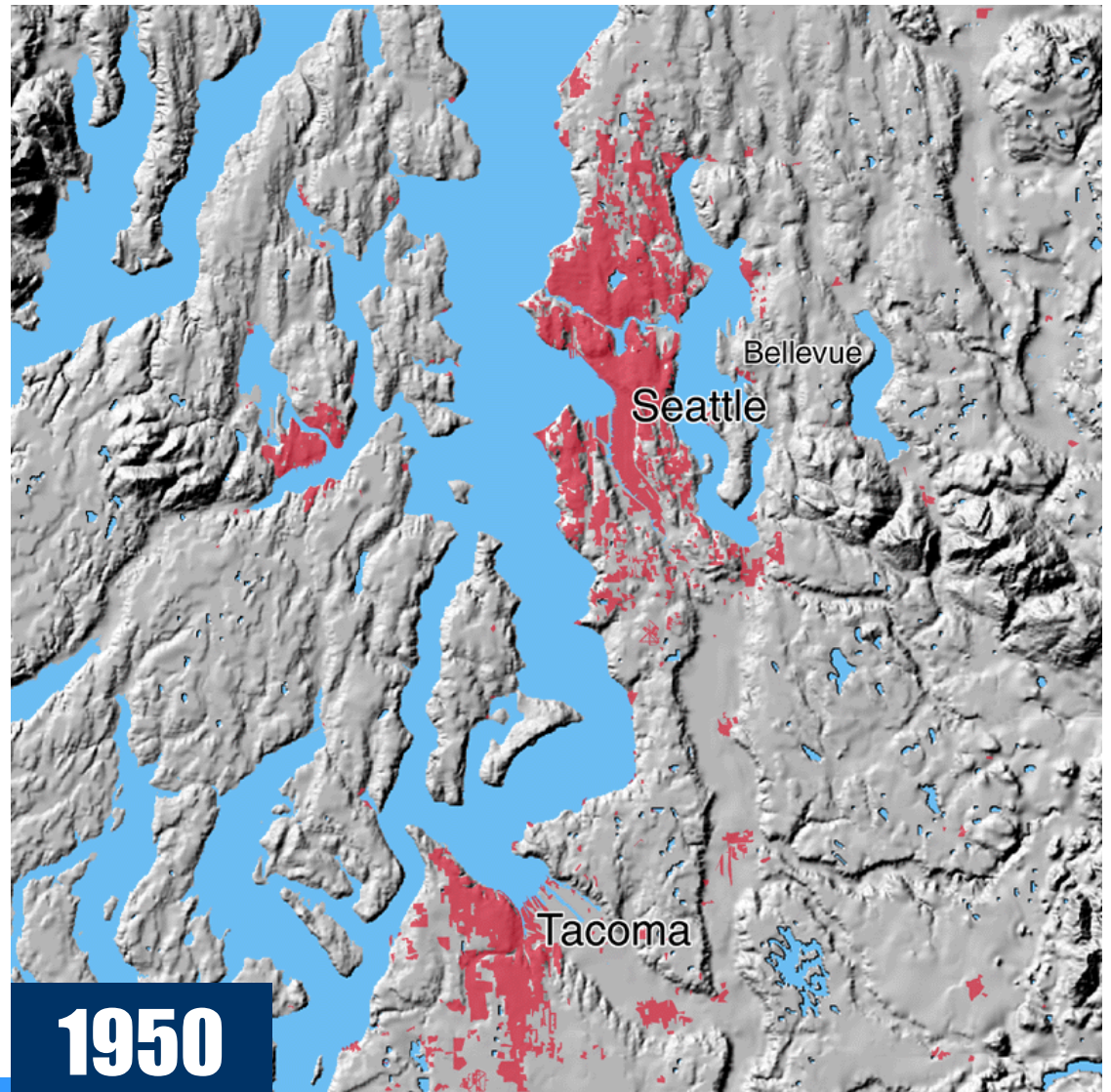




The Central Puget Sound's Growing Urban Footprint

Washington State
2.4 million people

Central Puget Sound
1.2 million people

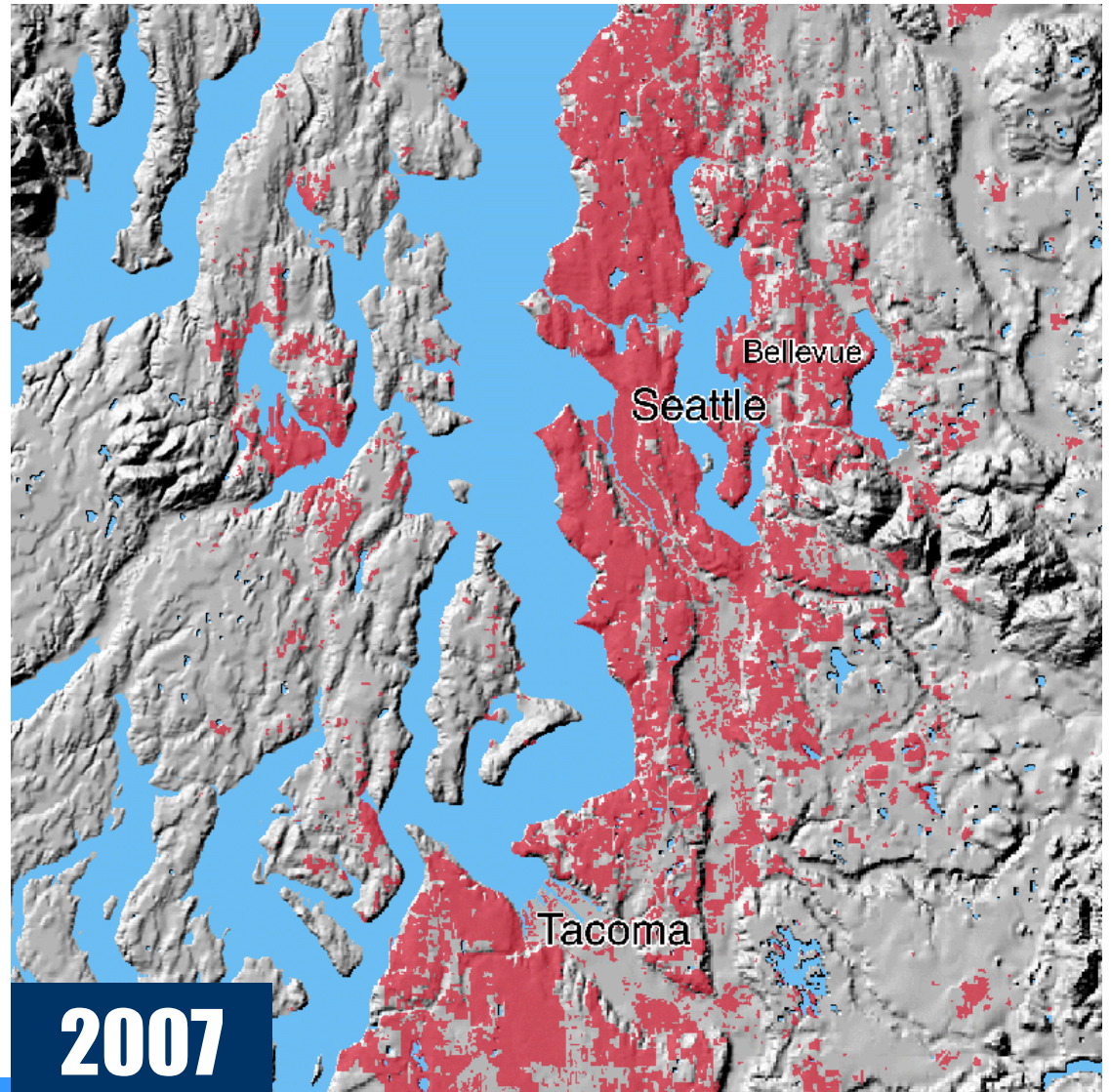




The Central Puget Sound's Growing Urban Footprint

Washington State
6.4 million people

Central Puget Sound
3.6 million people





What is Update Trying to Accomplish?



- **Quality of Life - conduct a regional conversation about our future**
- Environmental Baseline – emphasize environment a true frame for regional growth strategy
- Prioritizing transportation investments
- Hold the line on Urban Growth Areas
- More fully explain the whole strategy and structure for accommodating growth in region
- Addressing housing affordability
- Issues associated with demographic change
- Stronger, directed regional funding for wide variety of critical infrastructure



VISION for Growth: How and Where



Regional Growth Strategy

plan where growth should occur

- efficient growth patterns
- sensitive to the natural environment
- choice and equity



Multicounty Planning Policies

determine how growth should occur

- guidance at the regional level
- direction for urban design, community character



Updating VISION 2020: 3+ Year Process

December 2004 – October 2005

Sketch Planning & Policy Review – development and review of 8 regional growth scenarios; review existing policies

November 2005 – August 2006

Alternatives Analysis & Issue Papers – development, evaluation and review of 4 conceptual growth alternatives

- SEPA draft environmental impact statement
- Technical & scientific analysis
- Public comment
- Evaluation criteria

September 2006 – April 2008

Preferred Alternative – develop, publish, analyze, edit and adopt draft plan





Draft VISION 2040: Four Parts



Environmental Framework

Regional Growth Strategy

**Multicounty Planning
Policies**

Actions & Measures

Environmental Framework

- **Recognize that needs of people, our economic prosperity, & our planet are tied together**
- **Better understanding of our environmental impacts**
- **Call to meet current needs without compromising needs of future generations**
- **Commitment to integrated approach to environmental quality**

WAYS TO IMPROVE ECOSYSTEM CONDITIONS

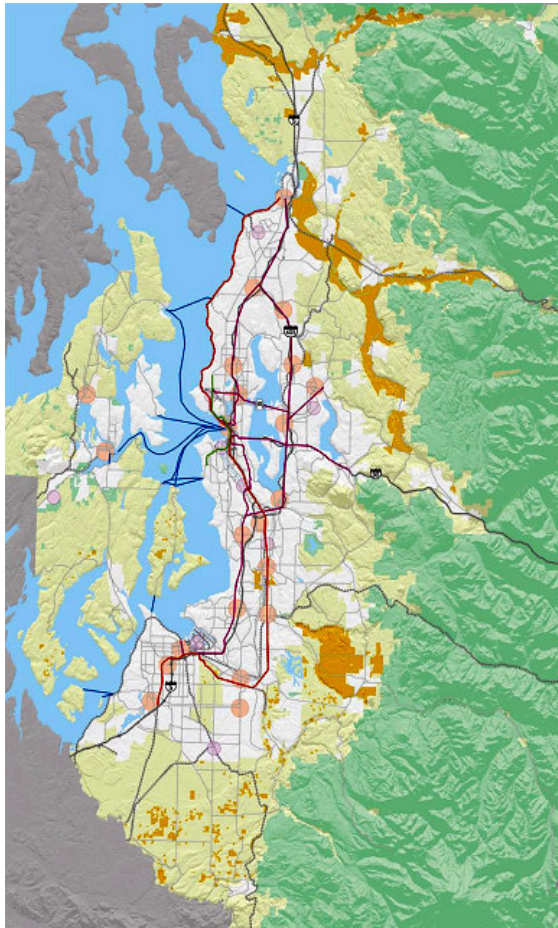


Source: John Owen, MAKERS Architecture and Urban Design

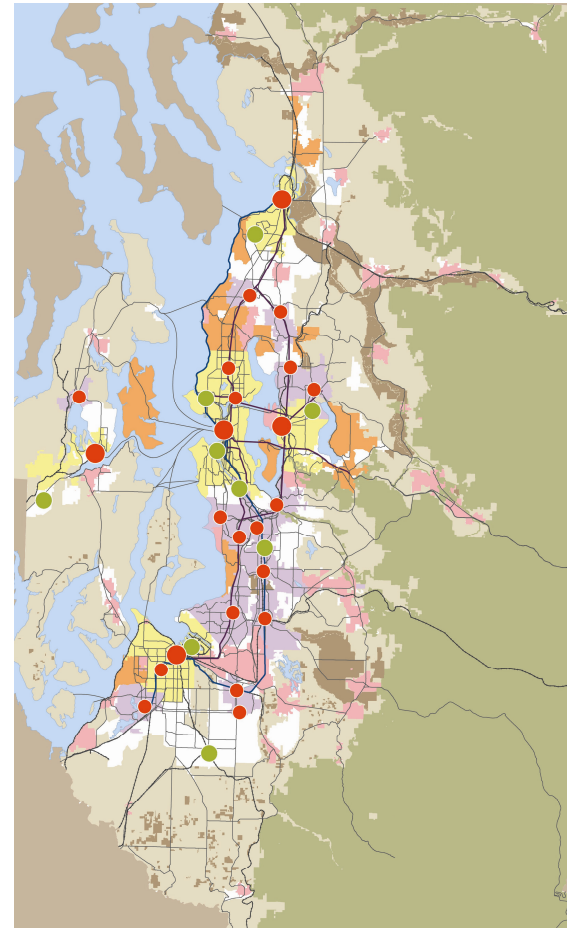


Regional Growth Strategy: New Approach

VISION 2020: Conceptual



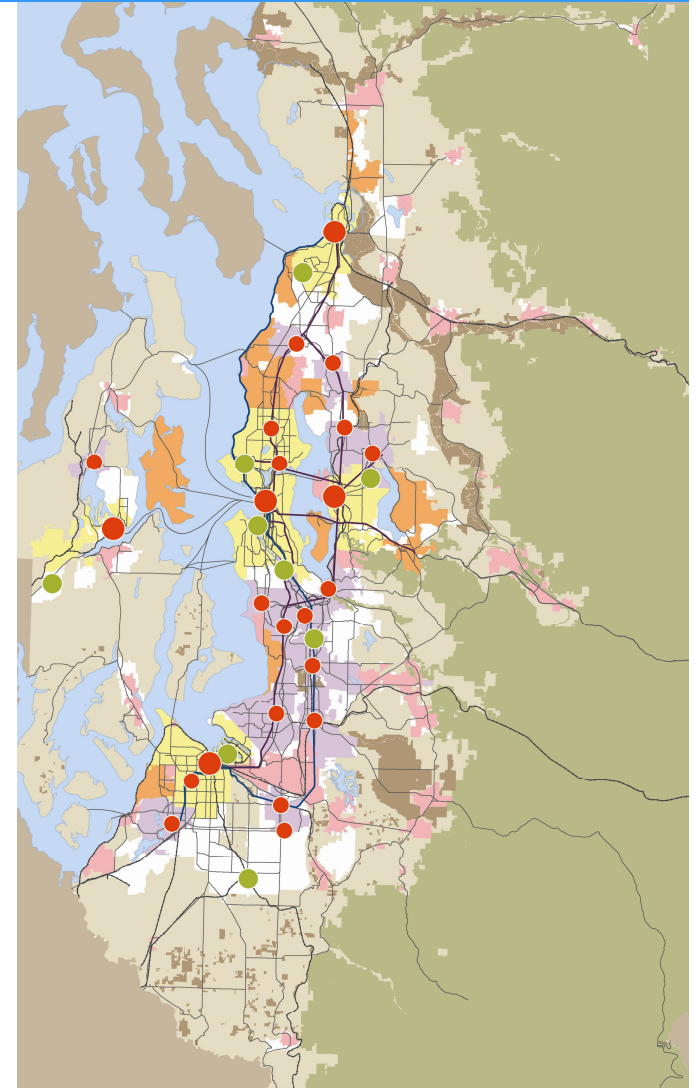
VISION 2040: Numeric





Regional Growth Strategy

- **A focused growth vision**
- **Designed to produce fewer negative impacts, more efficiencies**
- **Better jobs housing balance across region**
- **More effectively direct growth to and within urban growth areas**
- **Minimize rural development**
- **Prioritize and support growth in regional and subregional centers**
- **Respect subregional differences**
- **Regional Geographies more clearly describe roles of all communities**

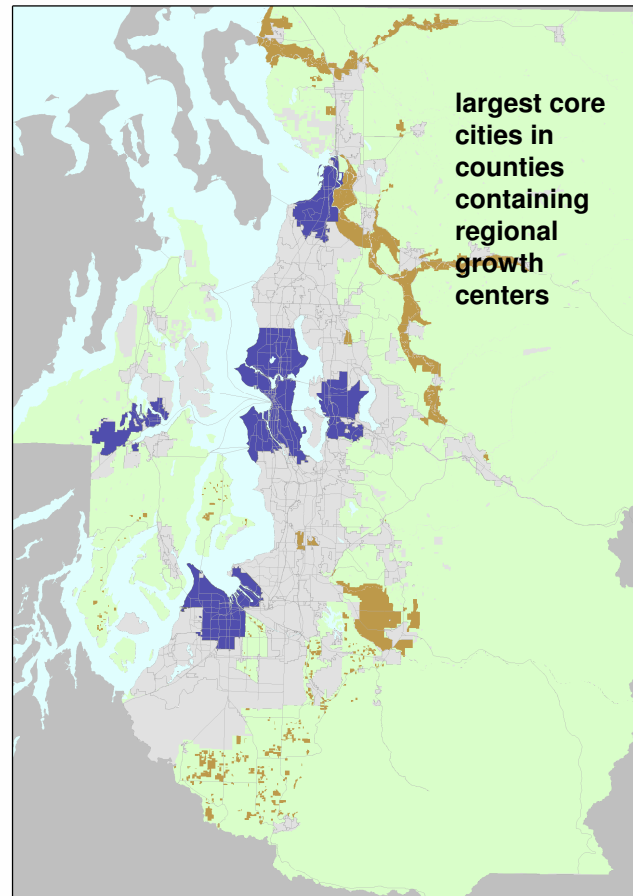




Regional Geographies

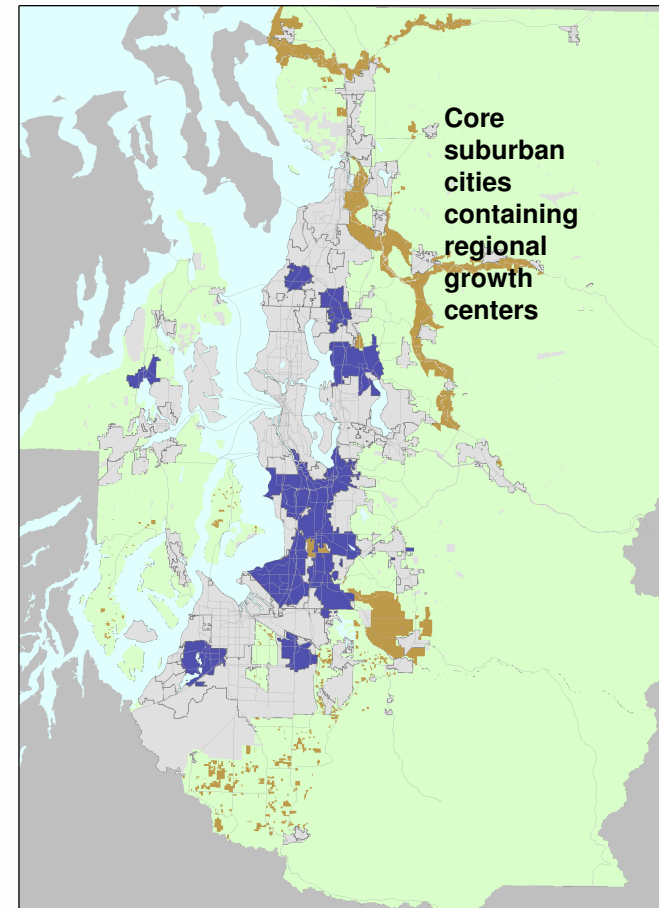
To distribute growth and conduct environmental review the region's jurisdictions were categorized into seven geographies based on size, location, existing and planned land uses, and current thinking about future roles.

Metropolitan Cities



5 cities

Core Cities



13 cities + Silverdale



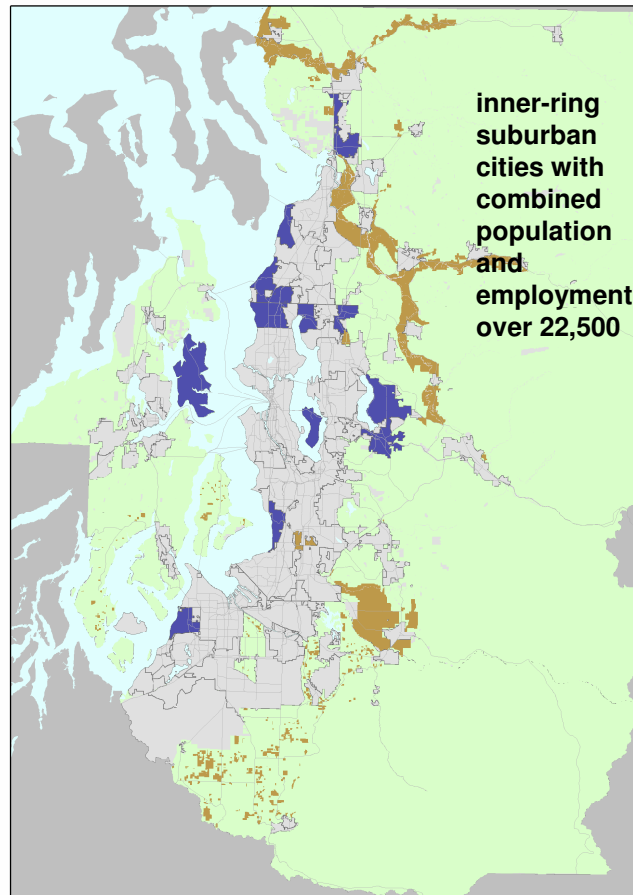
Regional Geographies

Larger Cities

The regional geographies were used as the framework for developing the four alternatives.

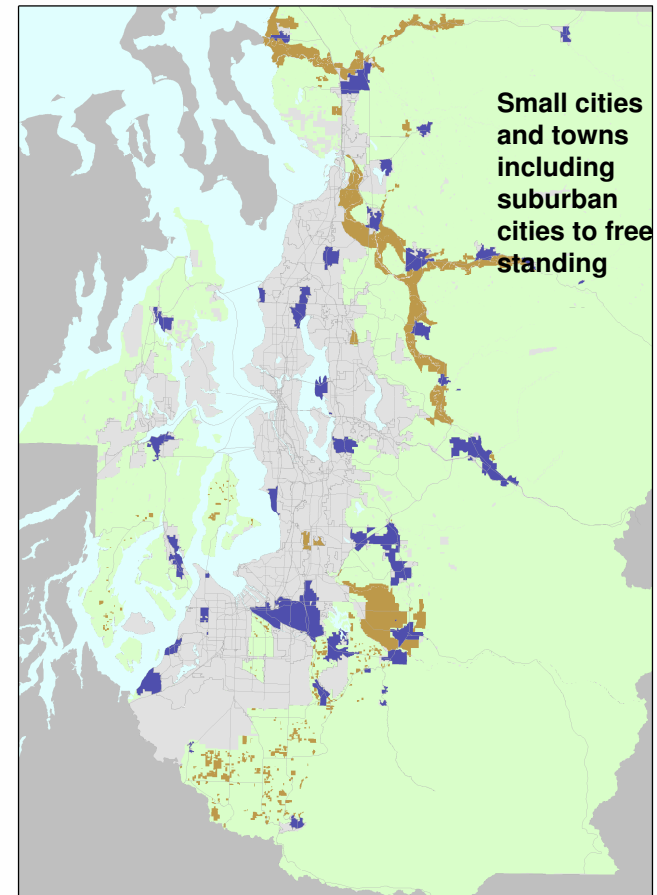
The geographies respect unique characteristics of individual cities and towns.

Classifications may change as forecasts are updated.



13 cities

Small Cities



51 cities

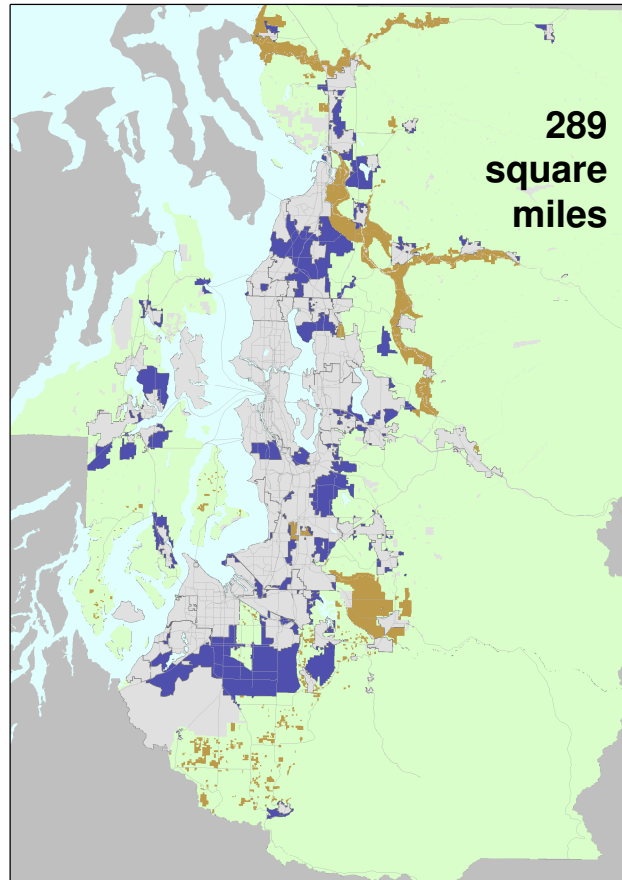


Regional Geographies

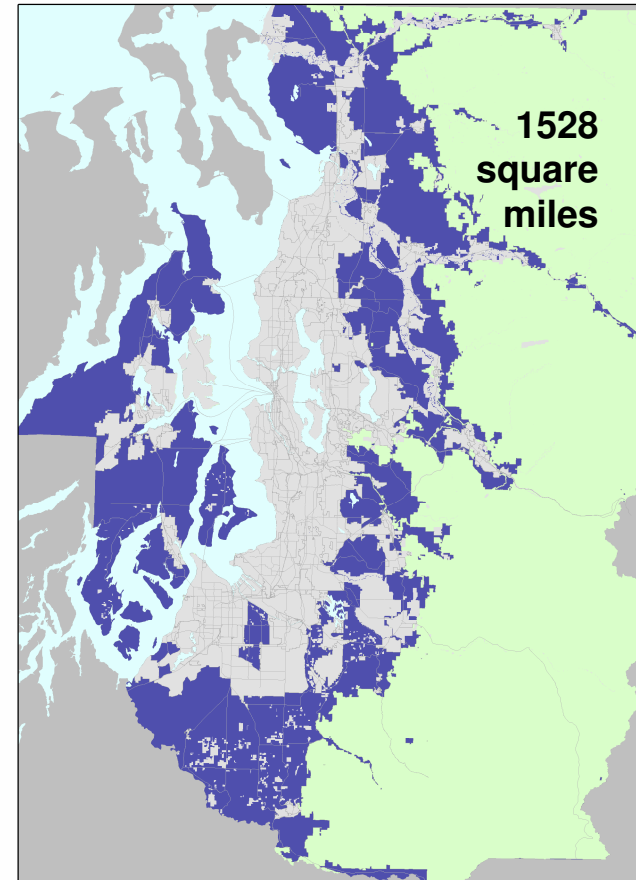
Unincorporated UGA

Unincorporated UGAs are not within the boundaries of cities and towns.

Rural areas are outside of UGAs and not designated as Resource Areas under GMA.



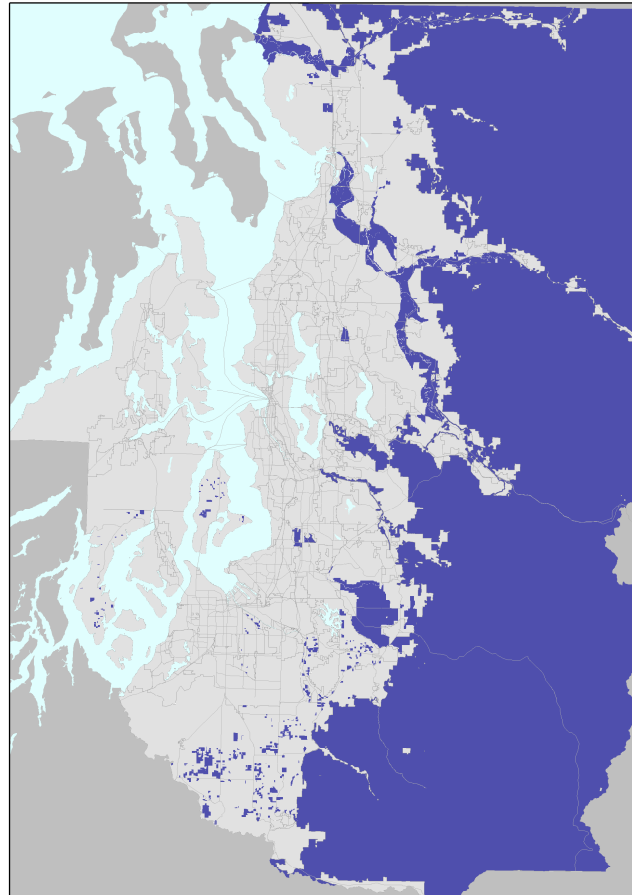
Rural





Regional Geographies

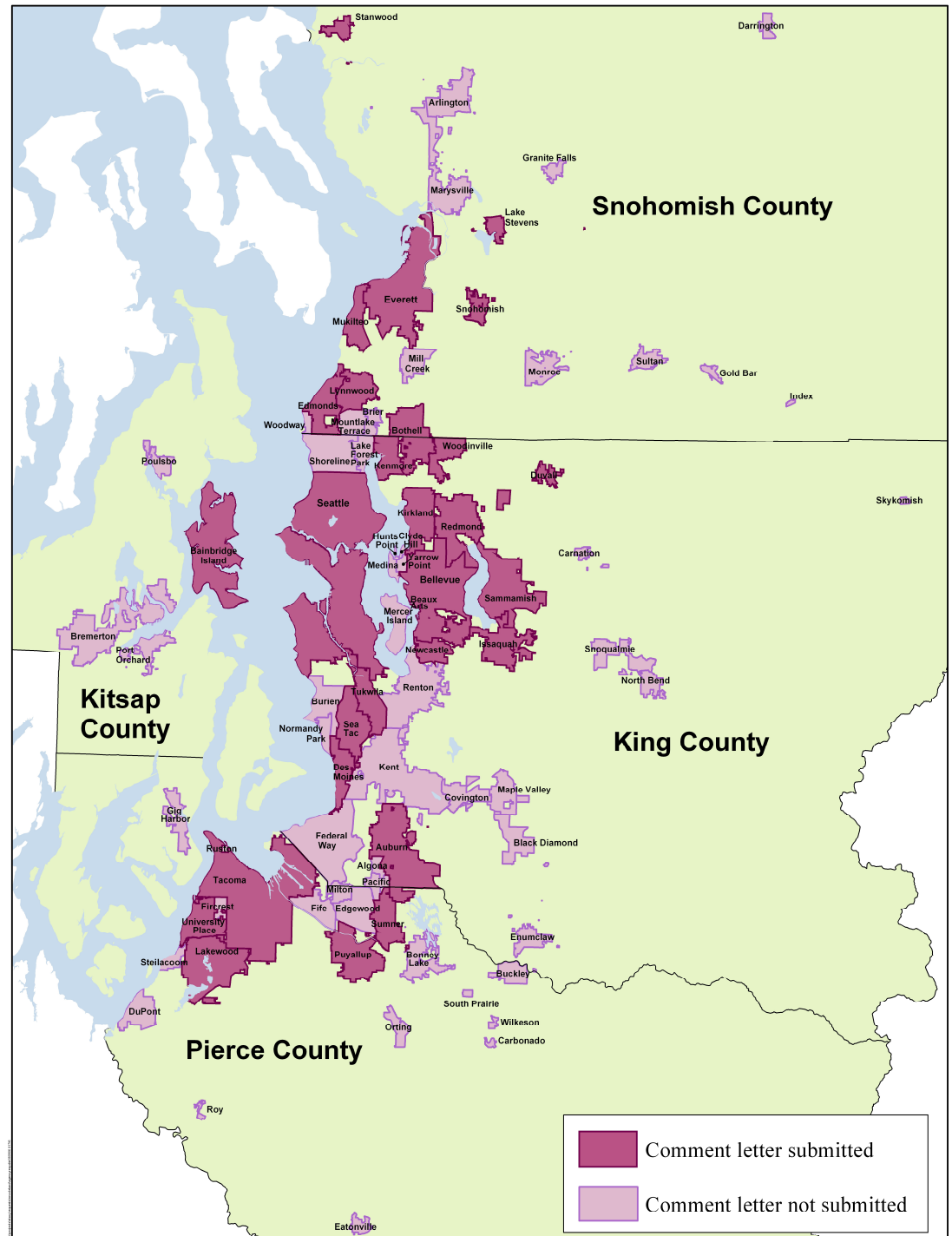
Natural Resource



Agriculture, Forest, Mineral Resource



- Strong preference for hybrid focused growth alternative
- Support regional agreement & leadership – better coordination
- Link land use and transportation
- Respect local control
- Address funding
- Address affordable housing
- Promote jobs/housing balance
- Address people, demographics, environmental justice
- Importance of urban design
- Issues regarding annexation, affiliation, UGA
- Preserve rural, critical, and natural resource areas

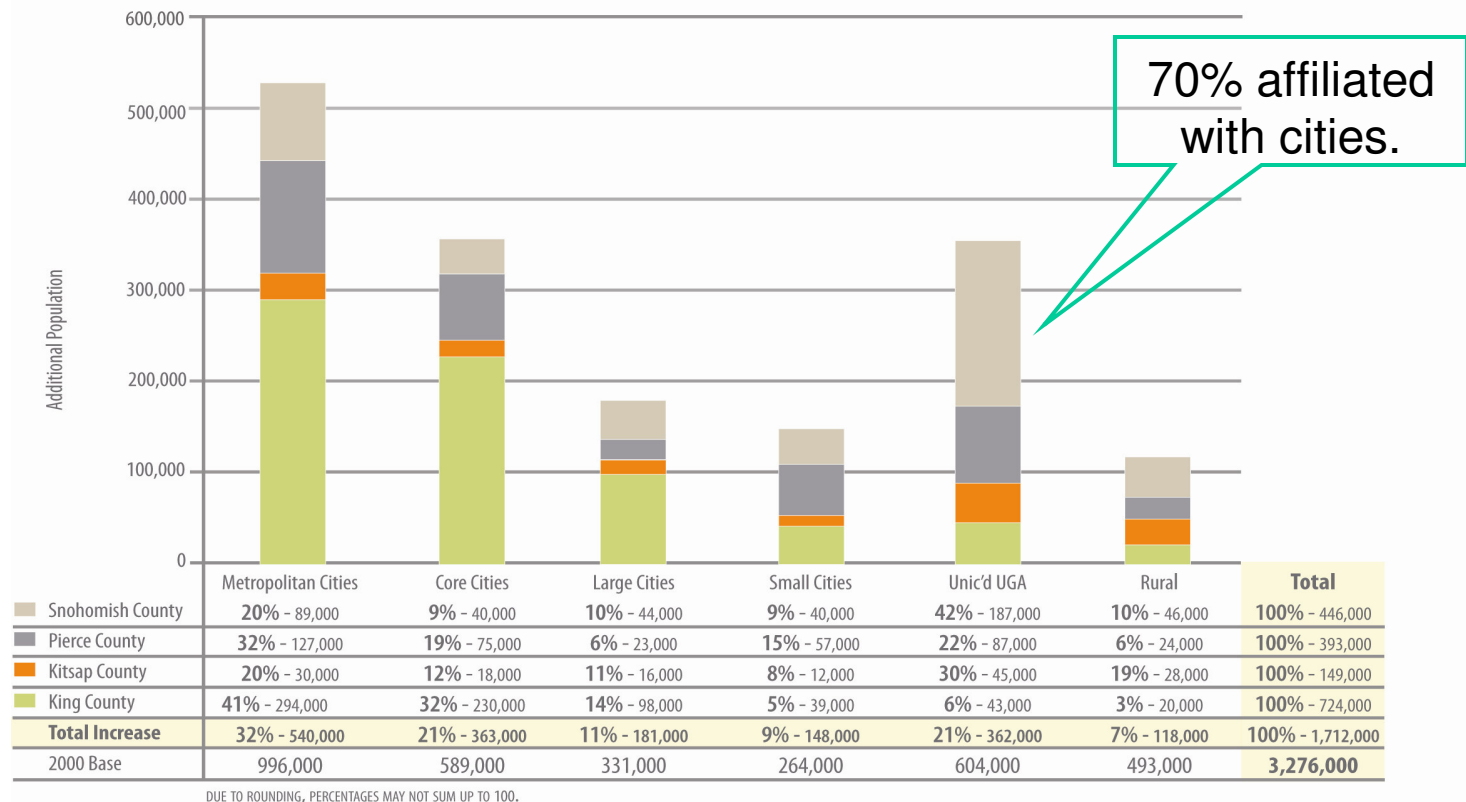




Regional Growth Strategy: Population

- **Focus more growth in cities with Regional Growth Centers, and in Larger Suburban Cities**
- **Minimize rural population growth**

Population Growth by Regional Geography and County 2000-2040

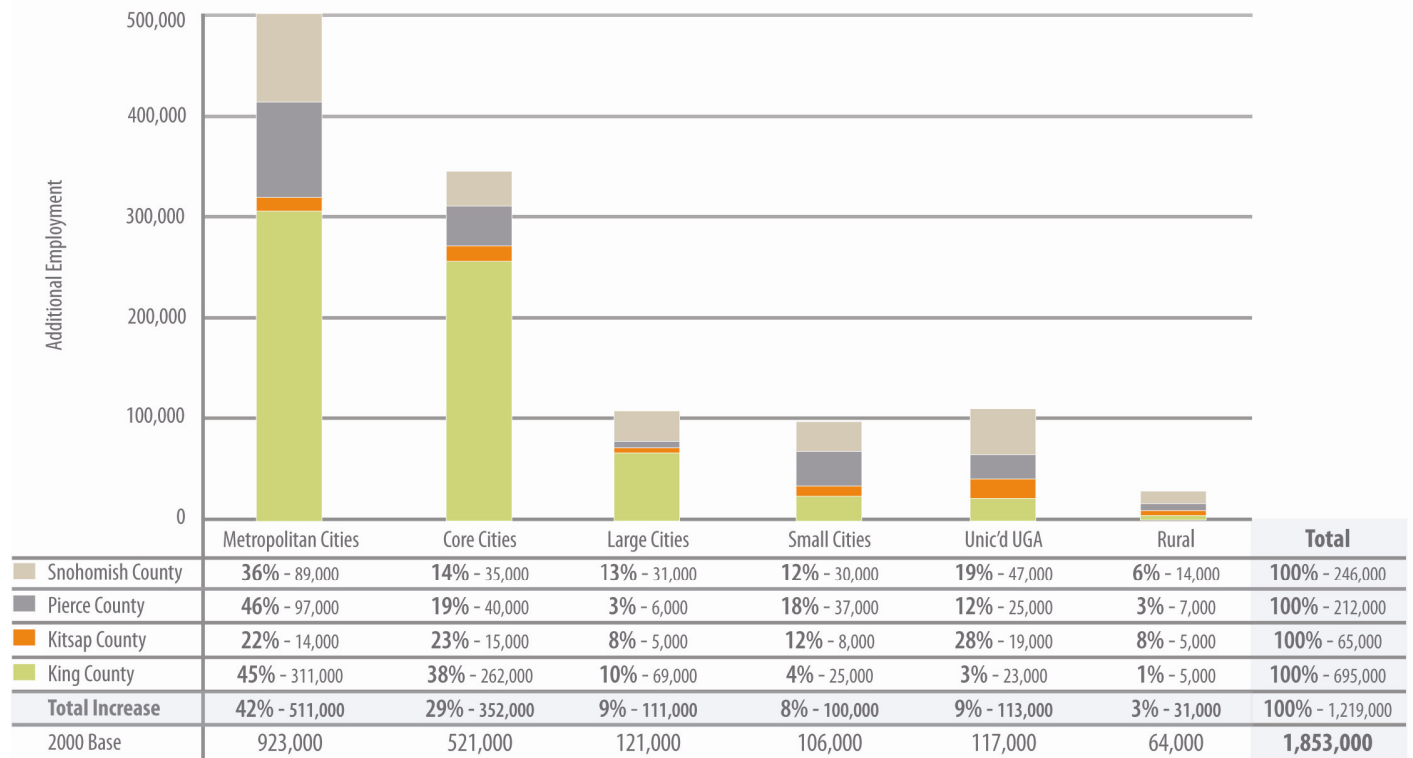




Regional Growth Strategy: Employment

- **Continue to emphasize concentrated pattern with focus on centers**
- **Increased employment share in Kitsap, Pierce, and Snohomish counties**

Employment Growth by Regional Geography and County 2000-2040



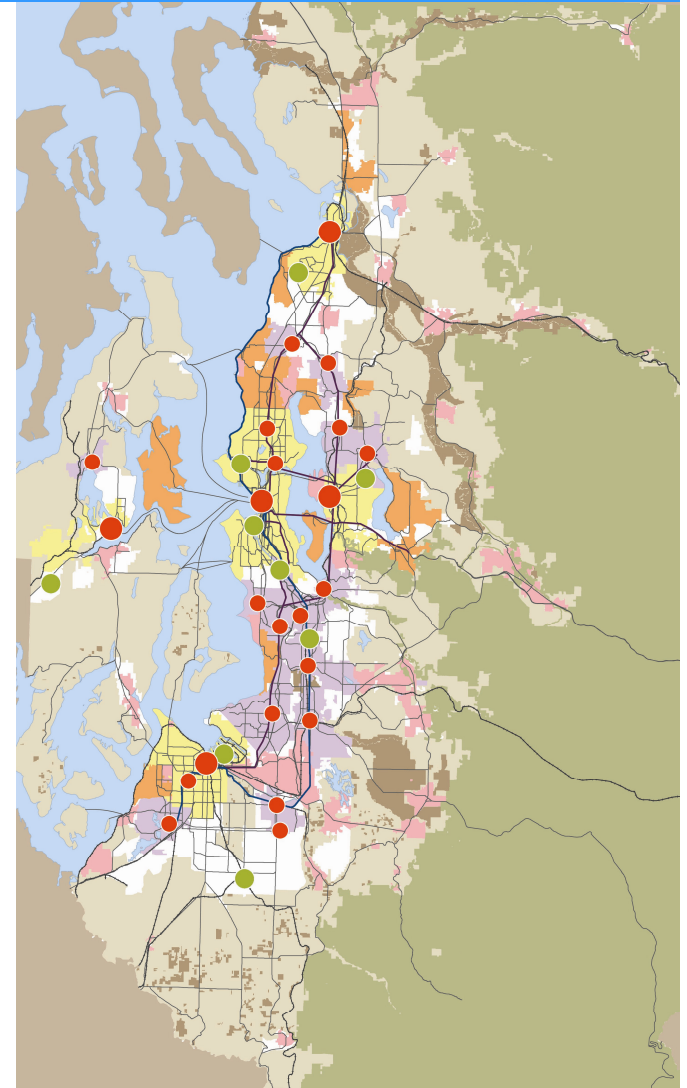
DUE TO ROUNDING, PERCENTAGES MAY NOT SUM UP TO 100.



Regional Growth Strategy

Implementation:

- Multicounty planning policies
- Local planning – including new population and employment targets set through countywide processes
- Next round of local targets in 2011 or earlier
 - technical amendment to Regional Growth Strategy is anticipated to address city growth, annexations, incorporations





Reorganizing the Existing Multicounty Planning Policies

Existing MPPs

1995 VISION 2020

8 Framework Policies
105 Topical Policies

Policies

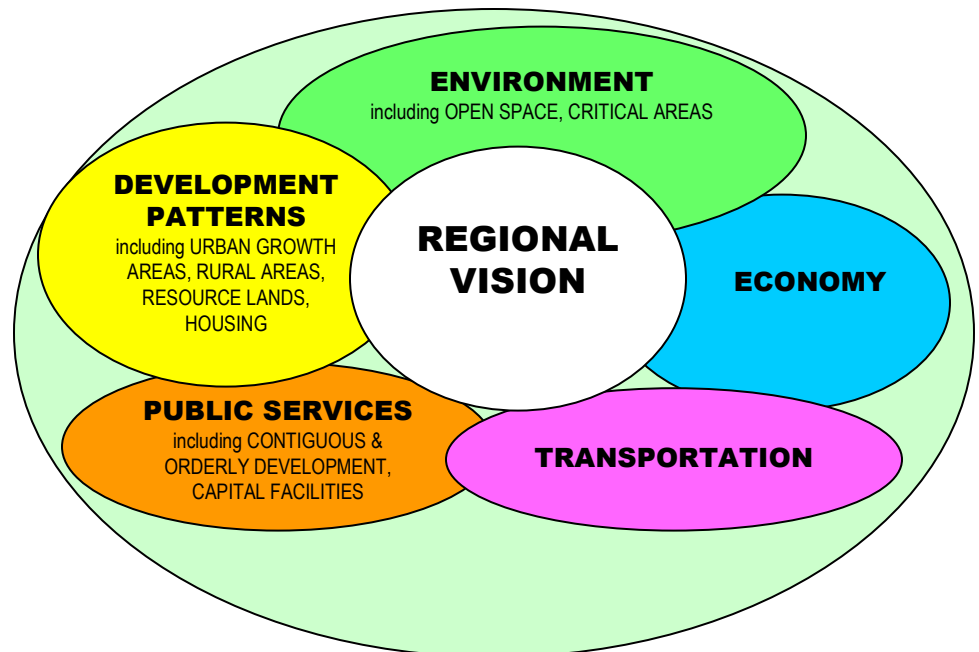
	OVERVIEW
(12)	URBAN GROWTH AREAS
(11)	CONTIGUOUS & ORDERLY DEVELOPMENT
(4)	CAPITAL FACILITIES
(5)	HOUSING
(7)	RURAL AREAS
(9)	OPEN SPACE, RESOURCE PROTECTION, CRITICAL AREAS
(17)	ECONOMICS
(40)	TRANSPORTATION



New and Revised MPPs

VISION 2020 Update

5 Policy Topic Areas
Goals – Policies – Actions – Measures





Multicounty Planning Policies

Recommitment:

- Concentrate growth in urban growth area
- Focus on cities & centers
- Promote Regional Open Space Plan
- Strengthen land use & transportation link (*Destination 2030*)
- Economic provisions strengthened by *Regional Economic Strategy*

New:

- Environmental Policy Section
- Climate change
- Advance environmental planning coordination
- Regional housing strategy
- Relationship between built environment & health
- Design



Environment

Overarching – *Preserve, restore, & enhance environment to maintain region's high quality of life for current & future generations.*

Continuing Policies – 5 existing policies reworked to add clarity & detail – pertaining primarily to **open space**, along with **critical areas**

What's New & Why? – Environmental section created to emphasize importance of environment. Provisions address **systems approach to environmental assessment, habitat, noise, water quality, air quality & climate change**





Development Patterns

Overarching – Focus growth within already urbanized areas in compact, pedestrian-oriented manner. Foster centers development, & maintain distinct communities with unique local character.

Continuing Policies – provisions addressing **natural resource lands, urban growth areas, centers, compact urban communities, rural areas, housing** revised with additional detail

What's New & Why? – Reorganized into *one* section with 3 subsections: **land use, housing, orderly development**

New provisions for **target setting, designating regional centers**, updated **rural** provisions, expanded **housing section**, expanded provisions for **walkability, innovative practices, urban design**



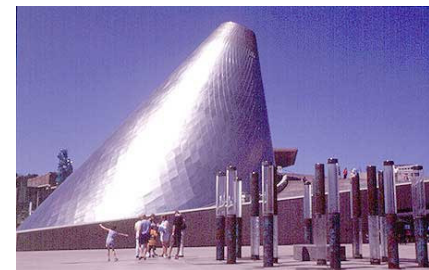


Economy

Overarching – Strong, vibrant economy necessary for implementing region's VISION. Promote & sustain integrated & coordinated approach to economic development to compete globally & ensure high quality of life.

Continuing Policies – enhanced & reorganized around topics of **business, people & places**

What's New & Why? – Revised economic section shows integration with *Regional Economic Strategy*. Section refocused on **people, the environment, businesses, clusters, economic foundations & jobs**, partnerships with **private sector & nonprofit sector**





Transportation

Overarching – Develop safe, integrated, sustainable, & highly-efficient multimodal transportation system that supports preferred growth alternative & regional VISION, & promotes economic & environmental vitality.

Continuing Policies – emphasize **maintenance & operations, land use/transportation planning coordination** (including **transportation demand management, freight movement**) & **greater mobility options**

What's New & Why? – Revised to address federal **SAFETEA-LU** & state **RTPO planning factors**. Added provisions for **safety, security, context-sensitive design, environmental justice**





Public Services

Overarching – Ensure that development supported with adequate public facilities & services in coordinated, efficient & cost-effective manner reinforcing local & regional growth planning objectives.

Continuing Policies – clarified & updated relating to **health & safety, adequate facilities, special service districts**

What's New & Why? – Reorganized & new policies for specific public services, including **solid waste, wastewater, water supply, energy, telecommunications, public safety & emergency services, schools & other community facilities, fiscal issues**





Work Ahead

Fall 2007

Review & analyze public comments

Edit final document

Prepare for Final EIS



Winter 2008

Hold Board Coordination Meeting

Conduct Public Hearing

Recommend final VISION 2040 to Executive Board

Spring 2008

General Assembly action

What's Encouraging?



- Optimism - wide support for building on current vision, continuing to pursue a focused regional growth pattern, connecting and building centers, improving transportation
- Improved environmental safeguards – particularly climate change
- People want progress on a variety of multimodal transportation solutions
- Transportation improvements coming online – visible to the public
- Greatly expanded regional cooperation, coordination – transportation, environment, economic development
- Growing emphasis on reinvestment, reuse, regional and local growth centers



Thank you

For more information contact:

Puget Sound Regional Council
Growth Management Planning
206.464.5815

www.psrc.org

Rocky Piro – Program Manager
Growth Management Team

rpiro@psrc.org

Ben Bakkenta – Principal Planner
Growth Management

bbakkenta@psrc.org

