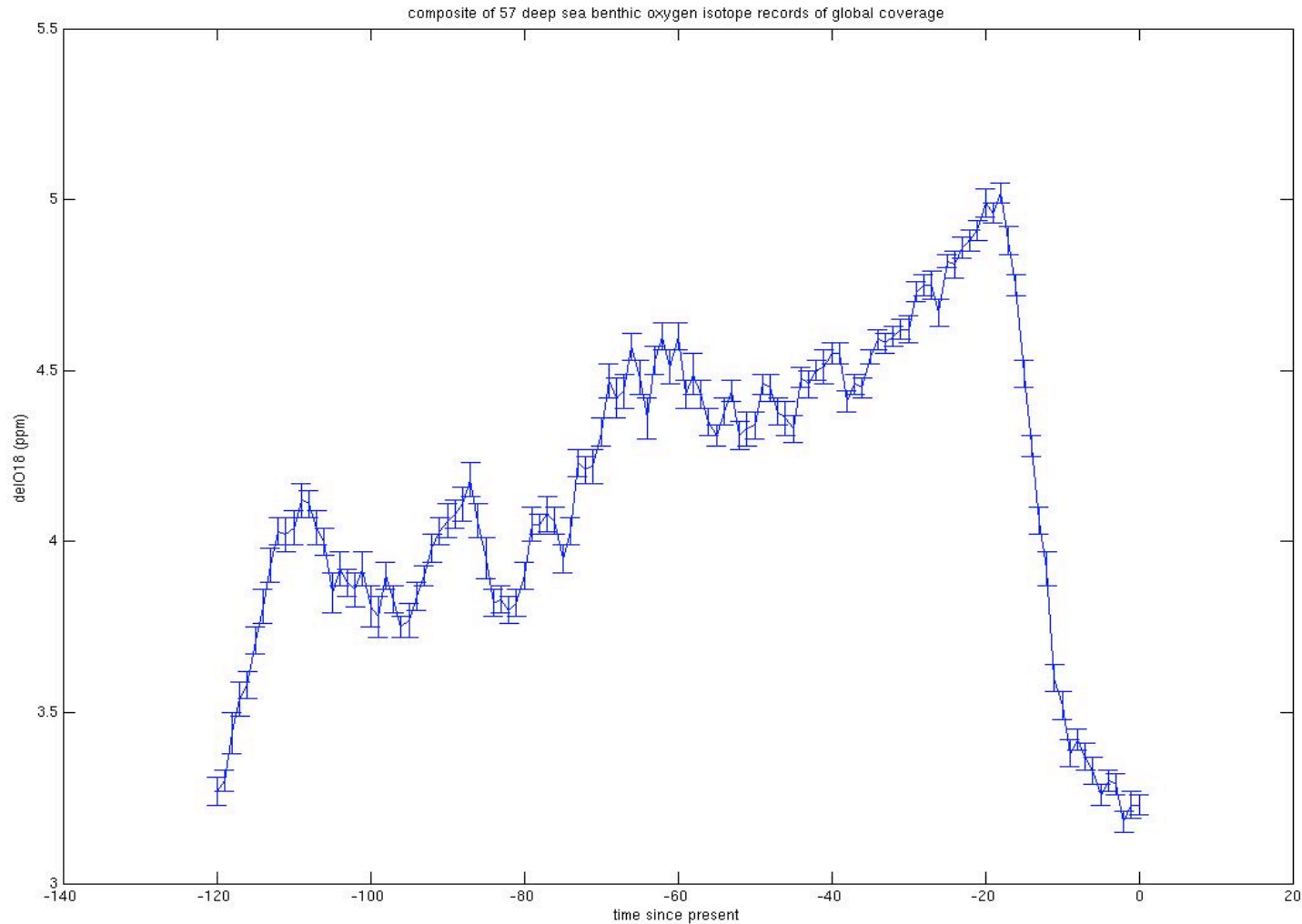


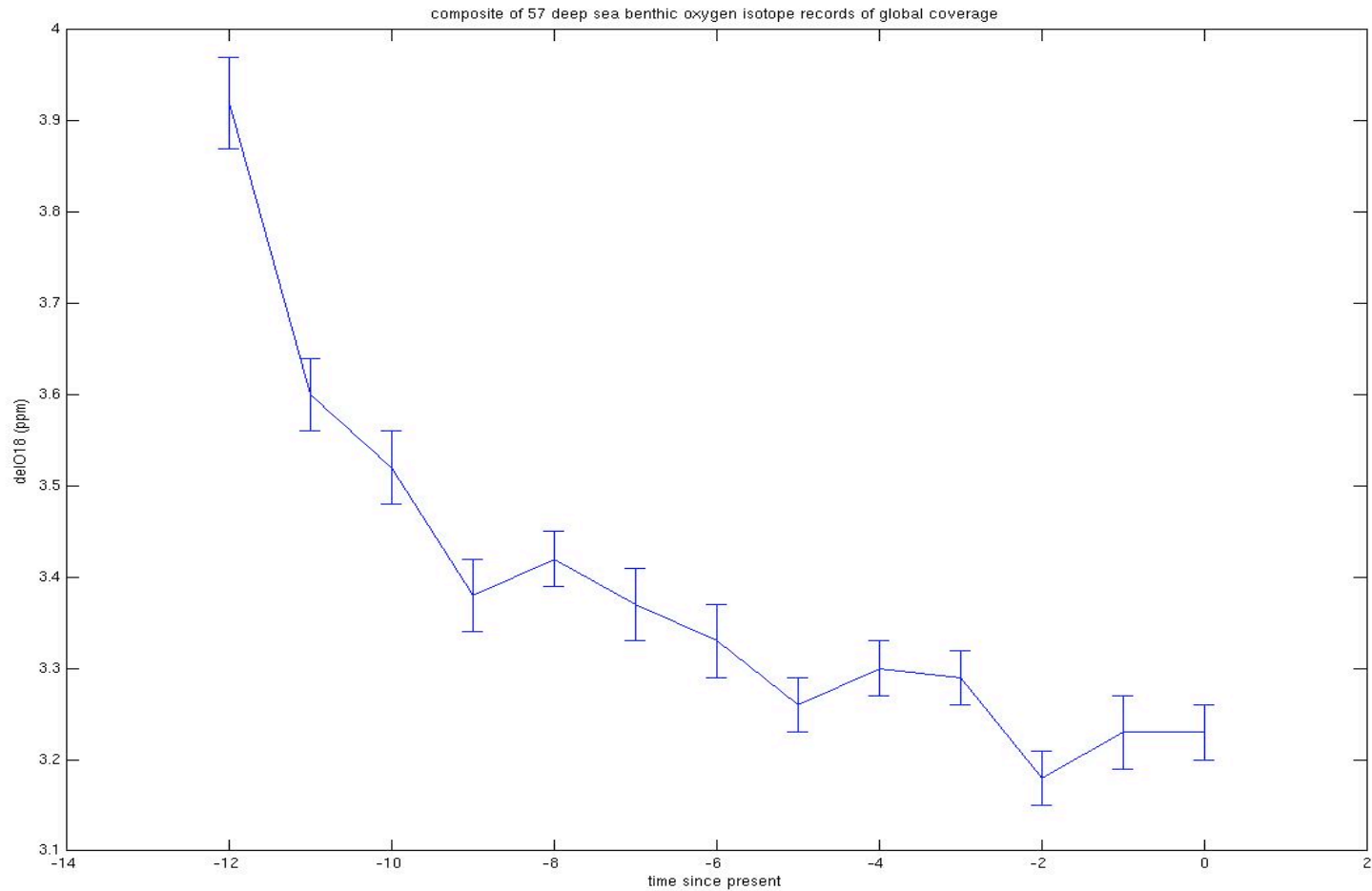
Location of Cores

Benthic Stack- Foram O18



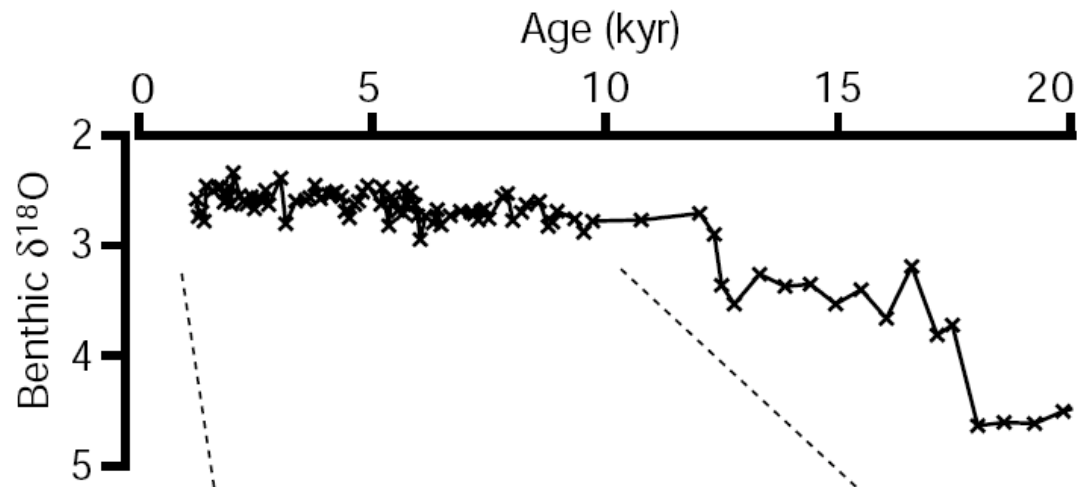
Please cite: Lisiecki, L. E., and M. E. Raymo (2005), A Pliocene-Pleistocene stack of 57 globally distributed benthic $\delta^{18}\text{O}$ records, *Paleoceanography*, 20, PA1003, doi:10.1029/2004PA001071.

Benthic Stack-Holocene

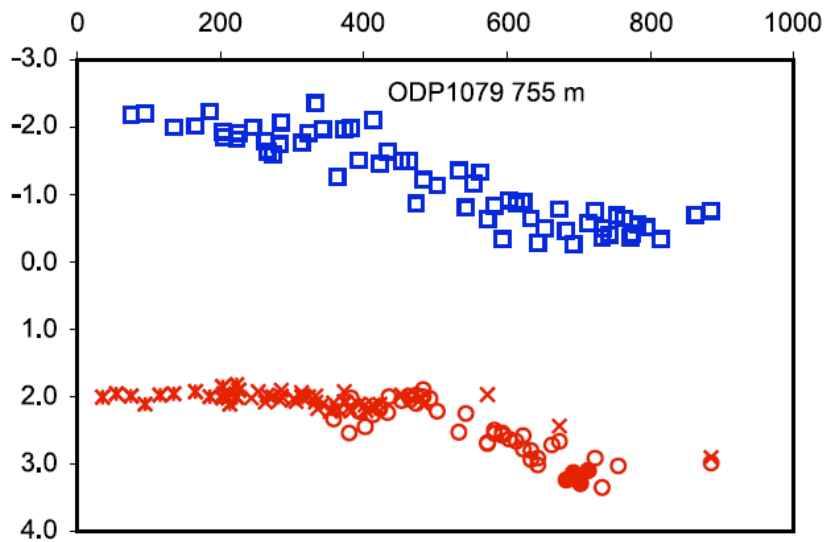


Please cite: Lisiecki, L. E., and M. E. Raymo (2005), A Pliocene-Pleistocene stack of 57 globally distributed benthic $\delta^{18}O$ records, *Paleoceanography*, 20, PA1003, doi:10.1029/2004PA001071.

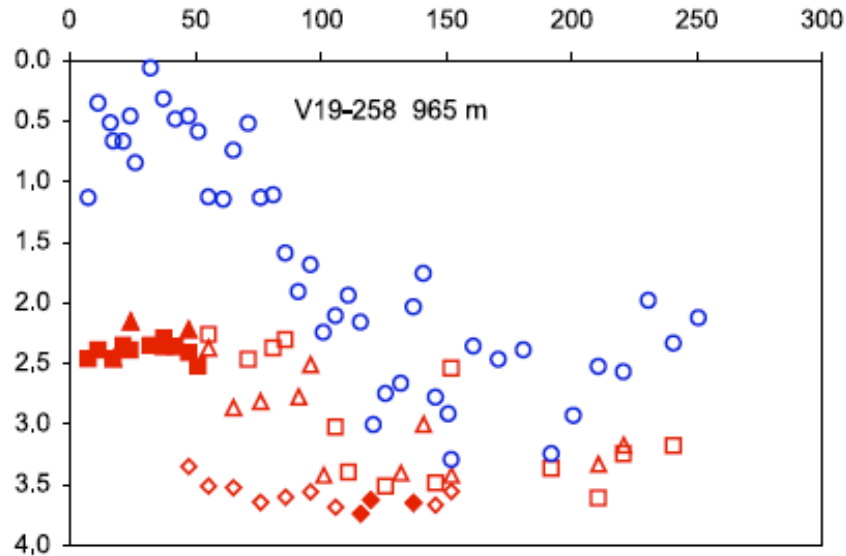
Good Benthic $\delta^{18}\text{O}$ records
spanning the Holocene



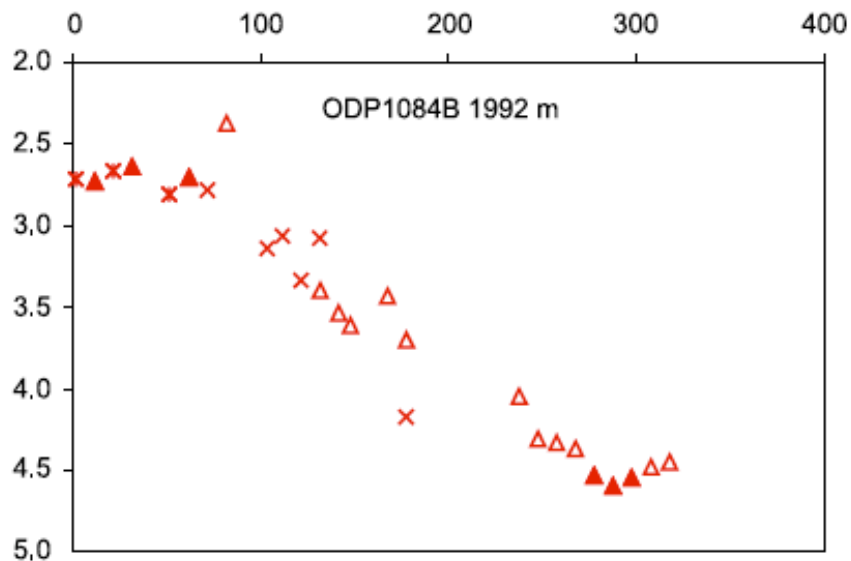
North Atlantic
 ODP Site 980
 From McManus et al. (1999) as
 reprinted in Oppo et al. (2003)
Nature.



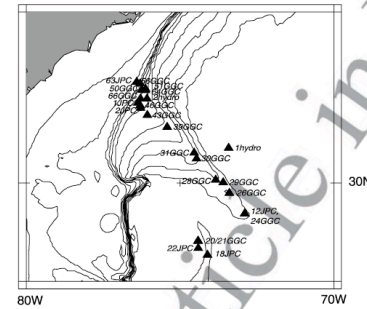
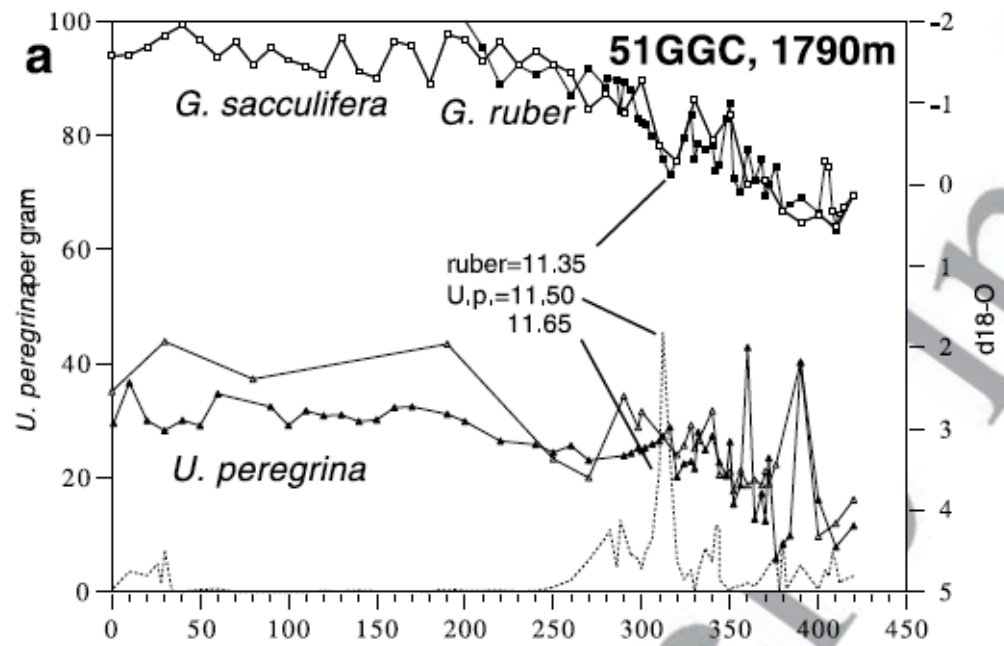
South Atlantic
 ODP Site 1079
 11.9°S, 13.3°E, 755 m
 Holocene $\delta^{18}\text{O}$ = 1.98 \pm 0.08‰,
 n=16
 Lynch-Stieglitz (2006) *G³* Volume 7, Number
 10
 3 October 2006
 Q10N03, doi:10.1029/2005GC001226



South Atlantic core V19-258
 20.4°S, 11.6°E, 965 m
 Holocene $d_{18}O = 2.37 \pm 0.10\text{‰}$
 N=14



South Atlantic core ODP 1084
 25.5°S, 13.0°E, 1992 m
 Holocene $d_{18}O = 2.71 \pm 0.06\text{‰}$
 N=6



←

North Atlantic
Keigwin (2004)
Paleoceanogr. Vol. 19
doi:10.1029/2004PA001029