

# InfoVis Systems

INFO 424  
 November 16, 2006  
 Polle Zellweger

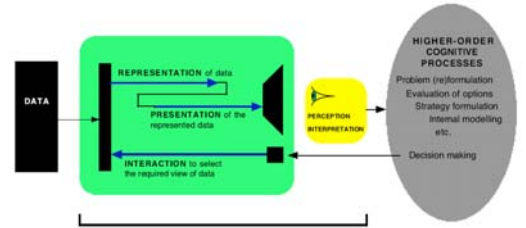
## Background

- ◆ We have examined different techniques for presenting multivariate data
- ◆ Today we look at systems that implement these ideas and provide some of their own new visualization techniques

## Breakdown

- ◆ Systems fall into three approaches
  - ❖ One primary multivariate representation
    - EZChooser, TreeMap, StarTree, TableLens, InfoZoom
  - ❖ Collection of popular and new views
    - Advizor, Tableau, Spotfire, InfoScope, ILOG Discovery,
  - ❖ Infrastructure with which to build views
    - InfoVis Toolkit, prefuse, Piccolo

## Elements of Information Visualization

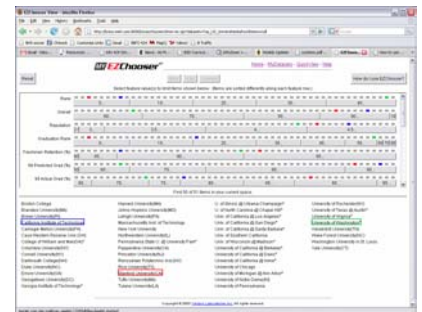


## One View Systems

- ◆ Each espouses a specific data representation

<http://brisa.merl.com:8080/myezchooser/>  
 EZChooser

### ◆ Demo



### Characteristics

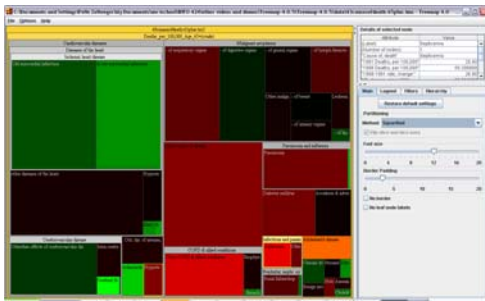
- ◆ Data case values sorted in each row (attribute)
- ◆ Interaction is important

### Evaluation

- ◆ Capabilities
- ◆ Limitations

see INFO 424 Resources page

### TreeMap

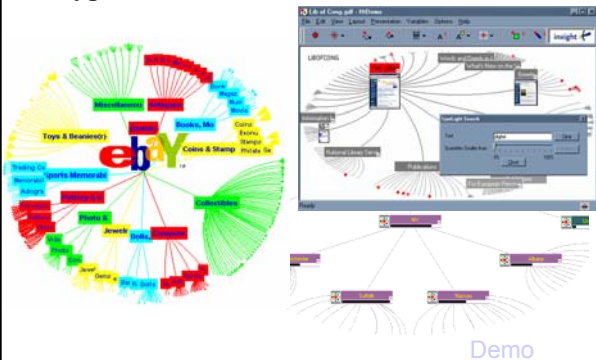


### Evaluation

- ◆ Capabilities
- ◆ Limitations

<http://www.inxight.com/products/sdks/st/>

### Hyperbolic Browser /StarTree



### StarTree Features

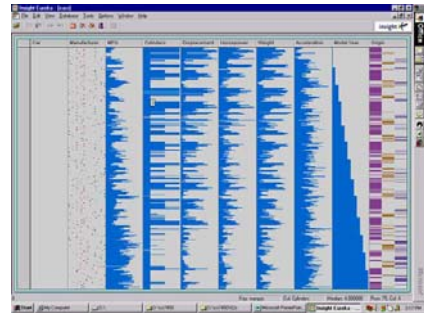
- ◆ Focus+context
- ◆ Visual variables
  - ❖ link node colors, link line colors
  - ❖ thermometer bars and wafer sizes
- ◆ Spotlighting
  - ❖ integrating search with browsing
- ◆ Animation
- ◆ ToolTips

### Evaluation

- ◆ Capabilities
- ◆ Limitations

<http://www.inxight.com/products/sdks/t1/>

### TableLens



[Demo](#)

### TableLens Characteristics

- ◆ “Visual spreadsheet”
- ◆ All the data is always visible
- ◆ Supports focus + context

### Evaluation

- ◆ Capabilities
- ◆ Limitations

<http://www.infozoom.com/>

### InfoZoom



[Video](#)

### Evaluation

- ◆ Capabilities
- ◆ Limitations

### Multiple-View Systems

- ◆ Each provides many different views of the data

### Advizor

<http://www.advizorsolutions.com/>



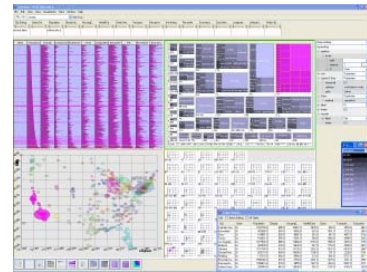
[Video](#)

### Evaluation

- ◆ Capabilities
- ◆ Limitations

### ILOG Discovery

<http://www2.ilog.com/preview/Discovery/>



### Characteristics

- ◆ Large collection of views including scatterplots, parallel coordinates, treemaps, heatmaps, bar charts, ...

### Evaluation

- ◆ Capabilities
- ◆ Limitations

<http://www.macrofocus.com/>

## InfoScope



Fall 2006 #15

INFO 424

25

## Evaluation

- ◆ Capabilities

- ◆ Limitations

Fall 2006 #15

INFO 424

26

## Sources Used

- ◆ INFO 424 Resources page
- ◆ John Stasko
  - ❖ Georgia Tech InfoVis course Spring 2006

Fall 2006 #15

INFO 424

27