

Escaping Flatland

Show Me the Numbers (ch 11)
Envisioning Information (ch 1)

Hope you have your books

Today's lecture

Questions on P1?
 Expectations for the Test
 Design for multiple variables
 Appropriate uses of 3D
 Discussion

- Escaping Flatland

 Feedback on homework

Next Lecture: Again, bring your Tufte book

P1 Due Friday, 1:30

Website with teams, project, data
 Present at start of lab
 Spend lab analyzing data

Website Link: Project Document

[Questions?](#)

Expectations for the Test

Handed out Friday at Lab

Take-home, open book
 Do it on your own
 Hand-in to drop-box Tuesday

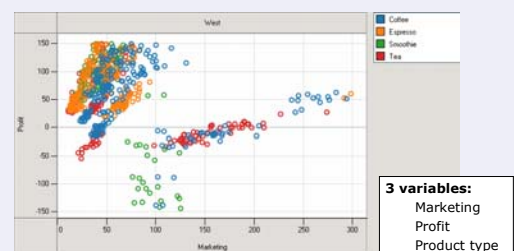
Test components

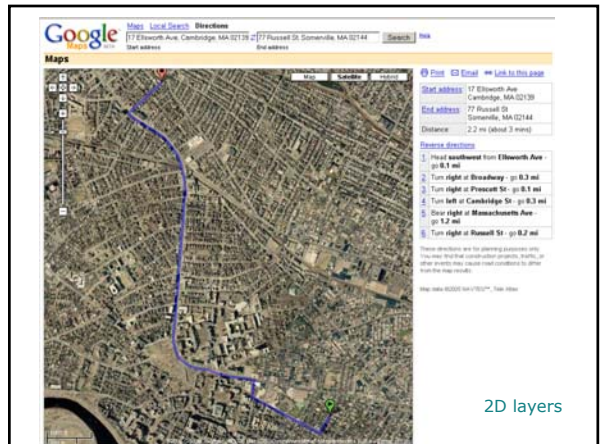
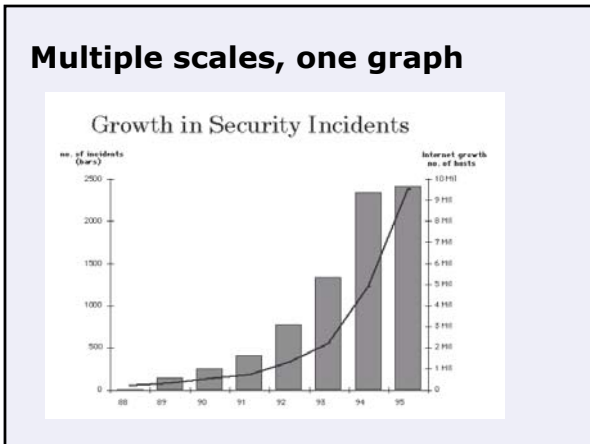
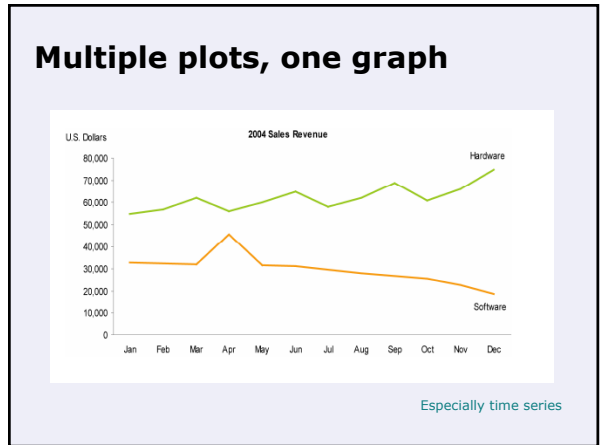
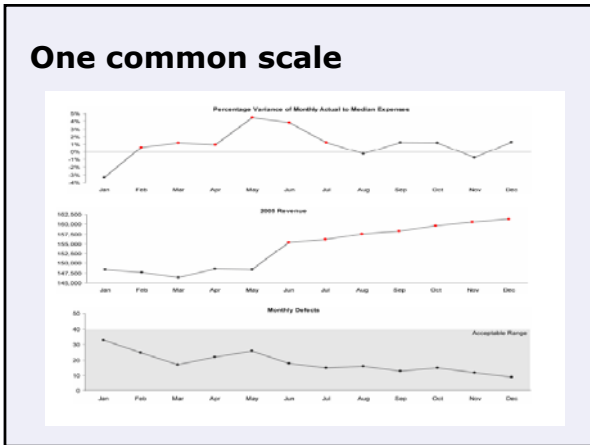
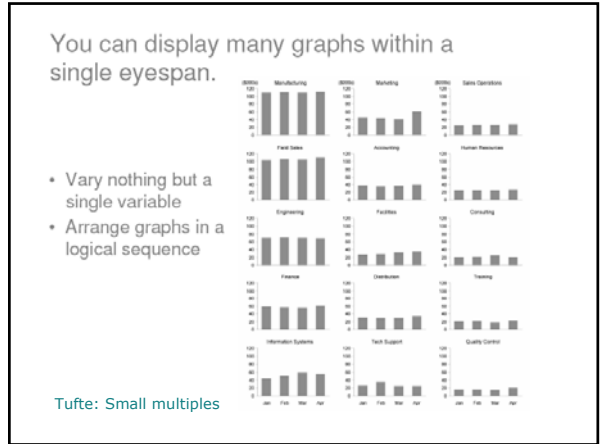
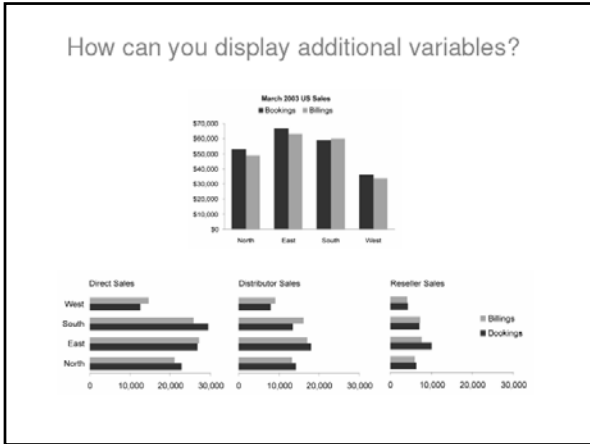
- Scenarios
- Graphs to redesign
- Find the design flaws

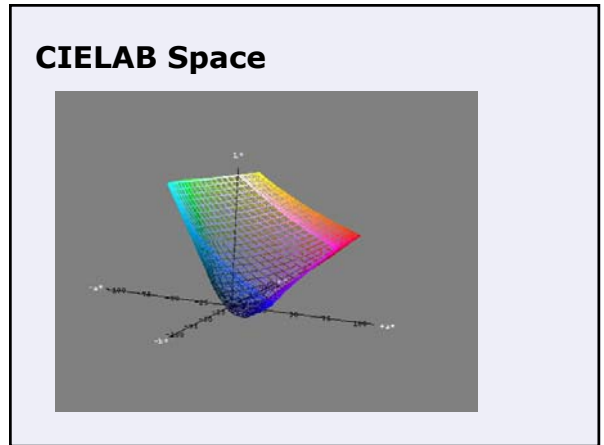
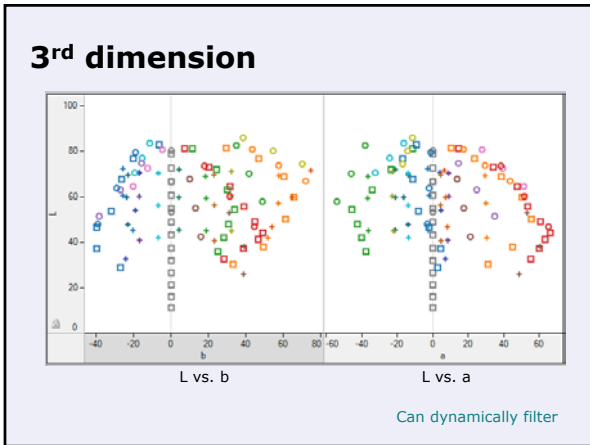
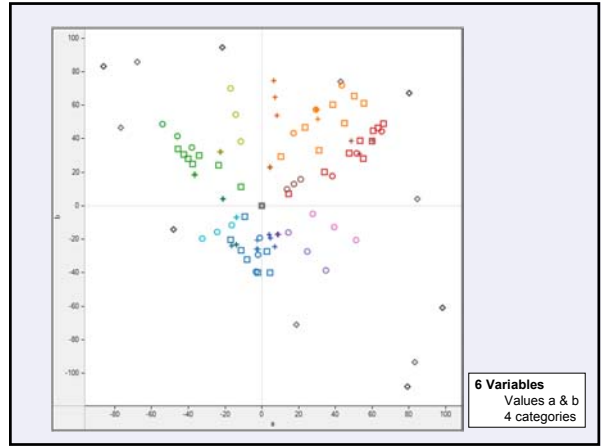
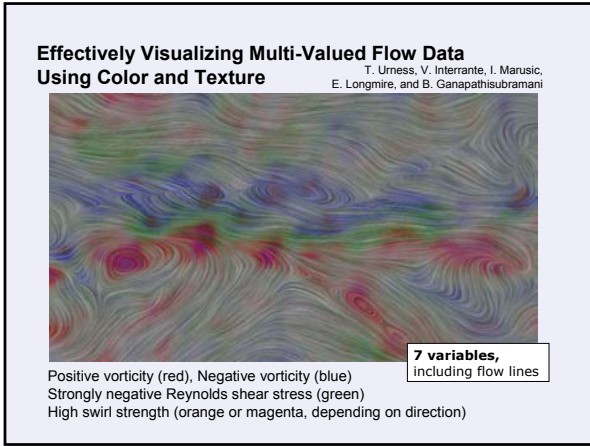
Few Exercises

Multivariate

Multivariate: multiple variables
 Relational: Relationship between variables







Not all 3D is bad

If data is inherently 3D

- Map to a 3D shape
- Map to a 3D volume

[Visible human sections skeleton](#)

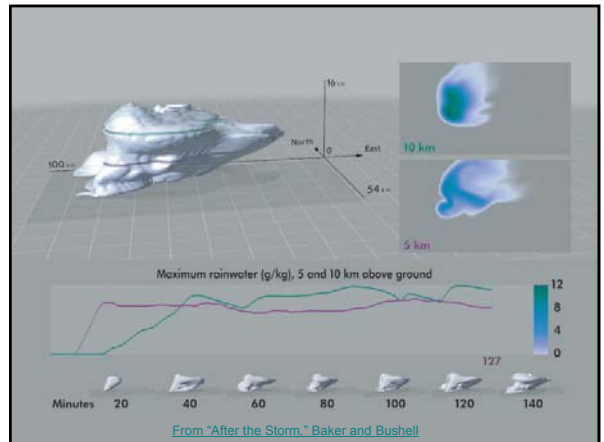
If data is 2D+ height

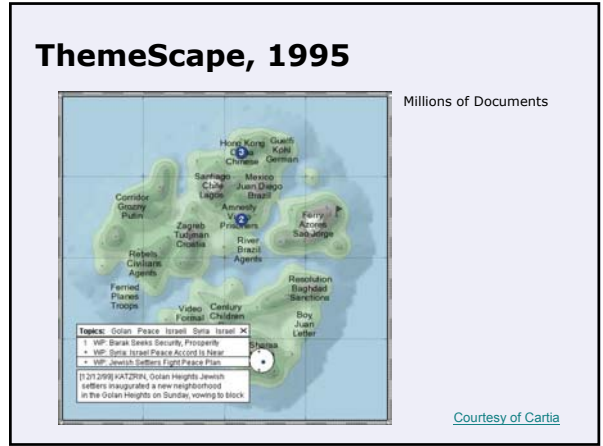
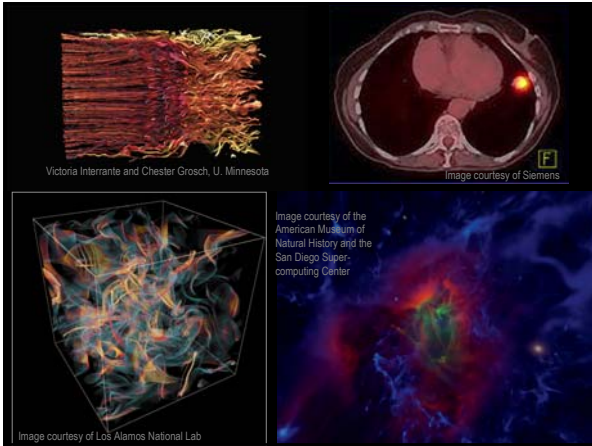
- Perspective maps
- Surface plots (x,y, height)

[Perspective map](#)

[Surface plot](#)

Often used in Scientific Visualization





What is the purpose of a Vis?

<p>Few</p> <ul style="list-style-type: none"> • Analysis • Monitoring • Planning • Communication <p>Tufte</p> <ul style="list-style-type: none"> • Description • Exploration • Tabulation • Decoration 	<p>Other</p> <ul style="list-style-type: none"> • Education • Aid to thinking • Aid to reasoning • Problem solving • Enhance cognition • Insight • Entertainment? <p>...and who is the audience?</p>
--	--

Escaping Flatland

Tufte, *Envisioning Information*

Discussion Questions

What does "escaping flatland" mean?
 What examples did you find confusing?
 What examples did you especially like?