

Today's lecture

Exam Feedback
Project update, grading, etc.

Exam questions

1. The Condo manager
 - Part 1. One unit is costing more than the average
 - Full credit for deviation
 - 3 points for categorical comparison or ranking
 - Part 2. The cost is correlated with the sales
 - Full credit for time-series marked with sales
 - Full credit for correlation of total costs with # sales
 - 2 points. Turnover rate/year vs. average rate/year
- 1 point if you forgot to adjust for inflation
- Throughout, full credit on (b) if it supported (a)

Exam questions

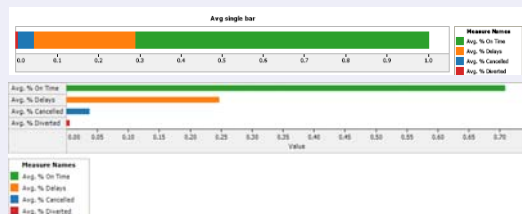
5. The dorm manager
 - Part 1. Meals/Student/Month is increasing
 - Full credit for
 - 2 numbers, table of averages
 - time series comparison of meals/student/month across at least 2 years.
 - -1 point if you forgot to normalize by the number of students
 - It was expected that you combine the three meals.

Exam questions

5. The dorm manager
 - Part 2. Ratio of type of foods is constant
 - Full credit for
 - part-of-whole for the categories across at least two years (bars or stacked bars)
 - time series of servings/student for each category
 - -1 point if you forgot to normalize by the number of students
 - -1 point if you made the viewer compare clusters of categories
 - -2 points Confused about the question, but answered a plausible question

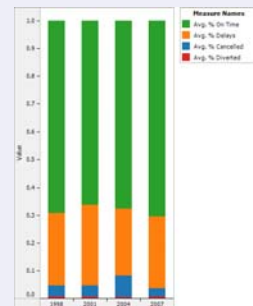
Exam Question

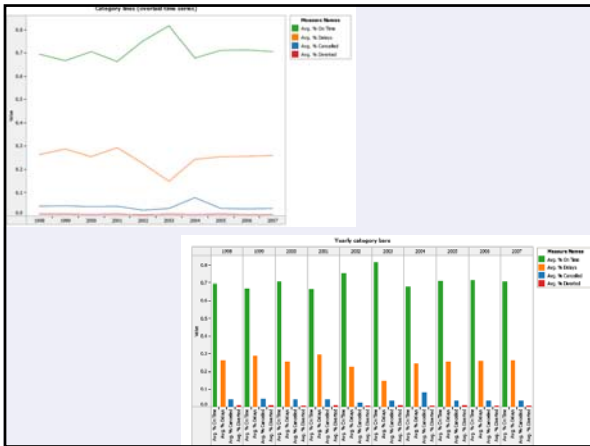
2. Pie Chart
 - Difficult to estimate area and angle
 - Perspective makes it worse
 - Other: key problems, separation, wasted space



Exam Question

3. 3D Graphs
 - Difficult to estimate height
 - Difficult to compare
 - Other: Occlusion, missing data, useless grid, etc.





Project Grading [iSchool Guidelines](#)

4.0	Exceptional work, doesn't get much better
3.7	Strong work. Very good, but could be improved
3.3	Competent work. Meets requirements fully, but isn't especially strong or weak
3.0	Acceptable, but shows some flaws or difficulty
2.7	Minimally passing. Many weaknesses or deficiencies
2.6-2.0	Deficient. Doesn't meet minimal expectations, flawed by errors or inconsistencies.
2.0-1.0	Unacceptable. Misunderstood the nature of the work required, or shows very little understanding. Errors and inconsistencies throughout
below 1.0	Incomplete / Totally inadequate work. Work was turned in, but was substantially incomplete, or missed the point entirely.
0.0	Not handed in

Phase I

P1: Select Teams, Data and Topic
 P2: Individual Data Visualization
 P3: Group Data & Task Visualization
 PF: [Individual Feedback to P3](#)

Timeline:
 Thursday 10/11 to Thursday 11/1 (3 weeks)

Schedule

P2, Data visualizations (individual, Tableau)
 • Due today at 1:00
 • Web link and hardcopy to us

P3, Task and Data (group, Tableau)
 • Due Tuesday at 1:00
 • Web link

Project Feedback on P3 is canceled
 • Too early in project sequence
 • There will be PF for P4 and P6

P4, Project design presentations (group, designs)

Goals

P2, Data visualizations (individual, Tableau)
 • You have viable data
 • Everyone has engaged with it

P3, Task and Data (group, Tableau)
 • Why are you showing this data?
 • Who is interested?
 • What are the messages/tasks?
 • How does data support this task?
 • Draft: Project name and description

Grading Schedule

Feedback on P2 from Polle at lab tomorrow

Feedback on P2+P3 from both of us at lab 11/2
 written grades soon after

Project Links

Server Stats: Lane L, Jason W and Chas W

- <http://students.washington.edu/luxx/424/424.html>

Government Spending: Ryan, Devin, Daniel T, Monica:

- <http://students.washington.edu/dyj/424/>

Basketball: Yih Sun, Sang, Timothy, Nak

- <http://students.washington.edu/semik83/info424>

Jobs: Heather, Quentin, Benji, Daniel K

- <http://students.washington.edu/bensg/info424/>

Deviant behavior: Shawn, Barry, John

- <http://tinyurl.com/2nstuy>