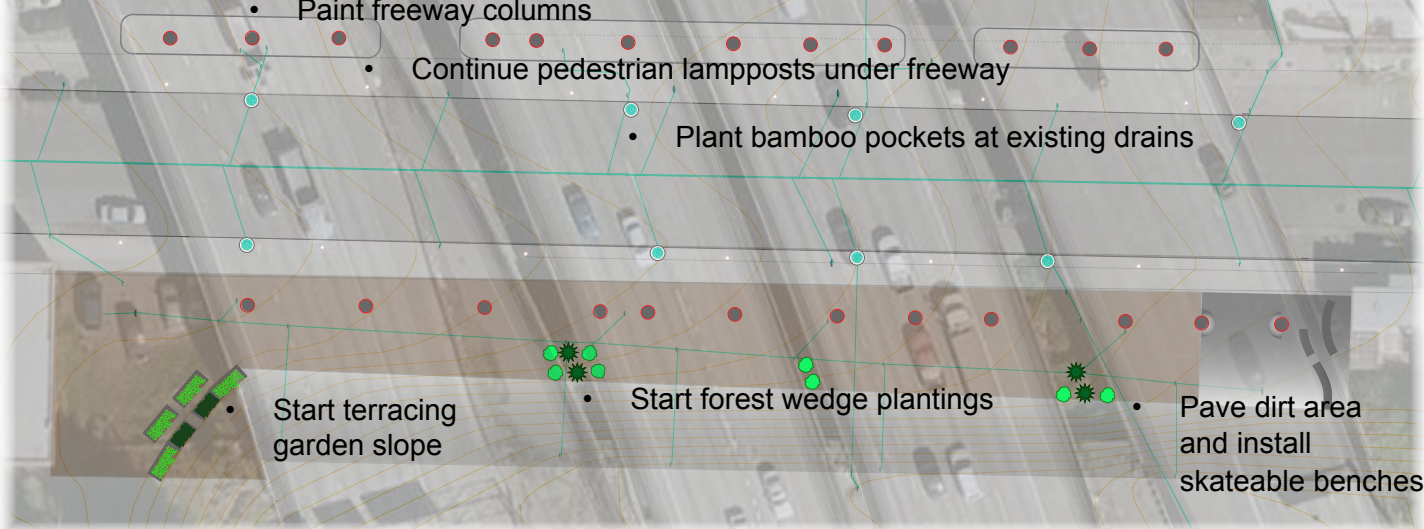
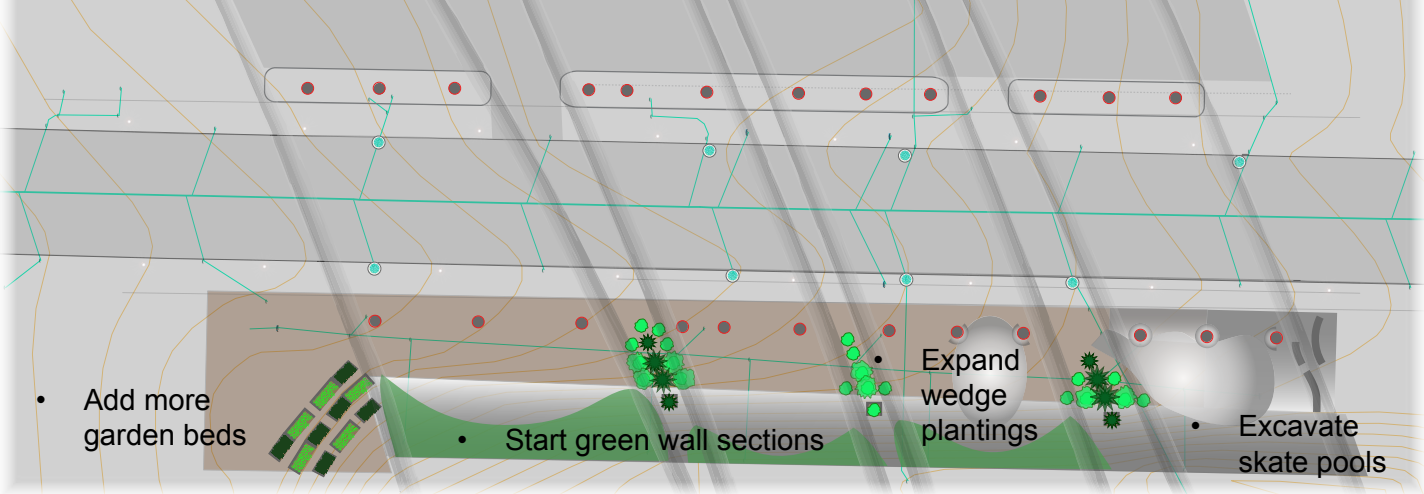


PHASE 1

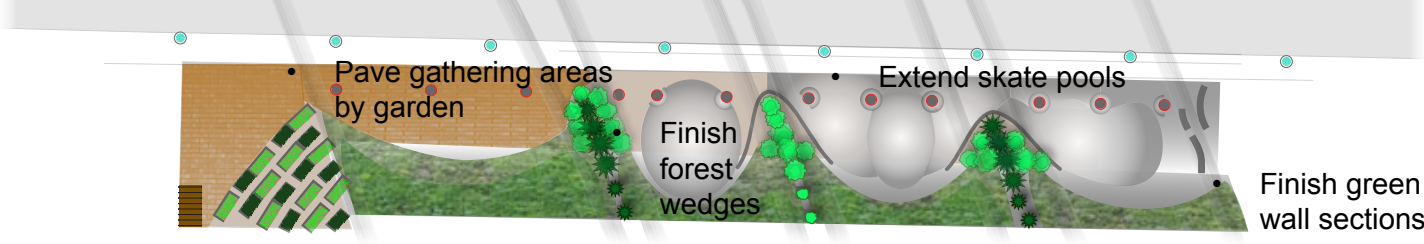


PHASE 2



• Expand garden across street

PHASE 3



KING STREET VISION PROJECT

CATCH THE *green wave*
King Street under I-5

金街新面貌



View walking West along the South side of King Street

PROGRAM ELEMENTS

This proposal aims to enliven an unsafe, unusable space with plantings and activity. Since the site is in the public right-of-way, city and state agency priorities are engaged to bring new energy and support into the International District. At the same time, a distinctive pedestrian passage is created that honors both 'Northwest' and 'Far East' cultures.

Three program elements are invoked to gradually transform the space: **community gardening**, **stormwater greening**, and **skatepark activation**. Each provides benefits to the local community while also encouraging participation from a wider circle of organizations. Each aspect can be implemented collaboratively in phases as resources permit.

community gardening

Vacant lots are gradually given over to community garden plots. Since the local community garden is full beyond its capacity, and up a steep hill, these new plots make it easier for elders to garden and socialize closer to home and the vibrant street life on the King Street corridor.



Public land on West side of freeway becomes terraced garden

stormwater greening

Stormwater drains are enhanced with planters of bamboo, which can be harvested periodically for craft applications by the community. Wedges of native forest plantings harvest freeway runoff and sunlight in the gaps between overpasses. Green walls of native ferns and mosses clean the air and water.



Bands of tree plantings between freeway with ferns and mosses below

金街新面貌

skatepark activation

Skaters can make good use of leftover spaces under freeways with minimal alterations to the existing grading and paving. The presence of their youthful activity helps to keep the space watched and safe, and brings a new kind of tourist business to the International District.



Skatepark takes shape under East side of freeway, on South side of King Street

POTENTIAL PARTNERING ORGANIZATIONS:

- Inter*Im Community Development Association
- Kay Ying Senior Citizens' Club
- Asian Counseling & Referral Services Food Bank
- Seattle Department of Transportation
- Seattle Department of Neighborhoods
- Seattle Department of Planning & Development
- Seattle Parks & Recreation
- Seattle Public Utilities
- King County
- Washington Department of Transportation
- GrindLine Skateparks
- Skaters for Public Skateparks