

Site Analysis | Parks and Environment

Open/green Space, Vegetation, Microclimate, Drainage and Soils

Jordan West Monez

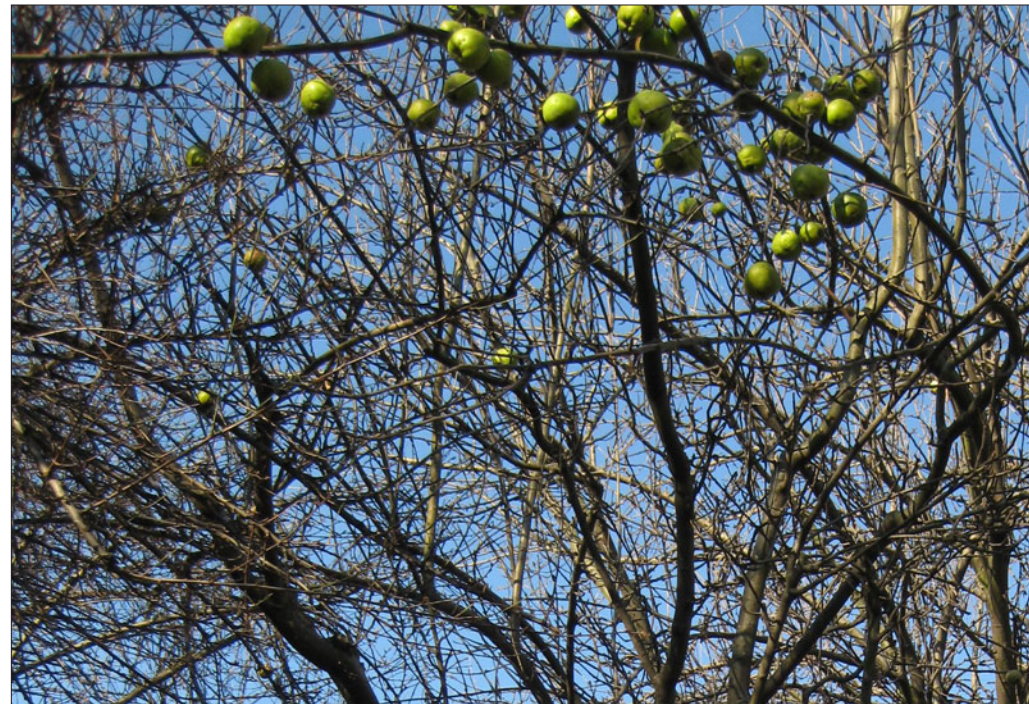


Photo: Apples in trees of Danny Woo International District Community Garden.

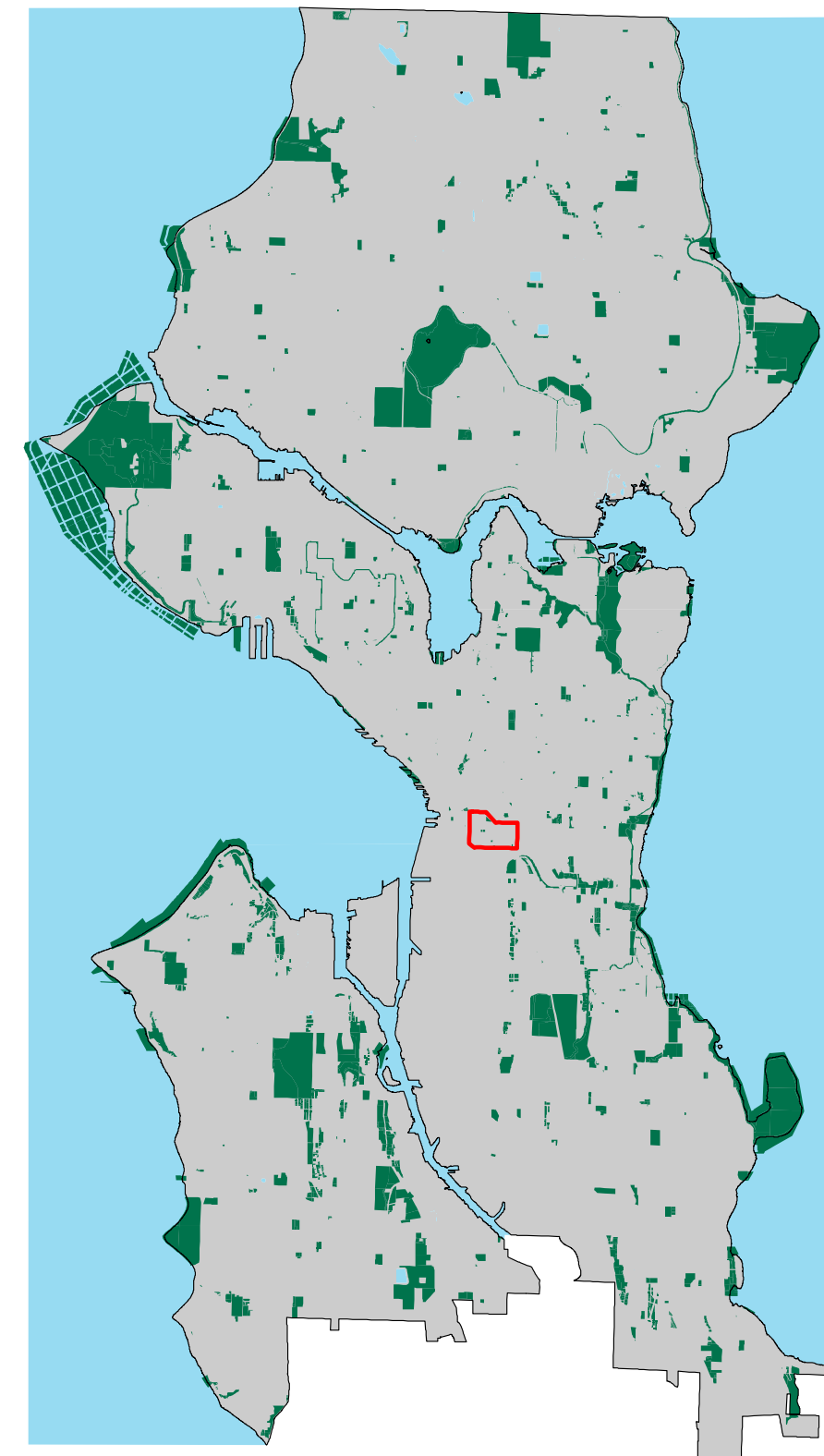
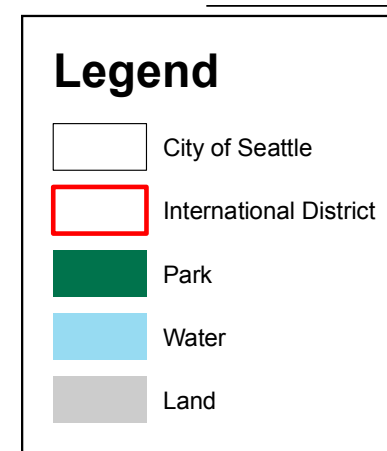


Photo: Vegetation on wall of private building in the International District on Jackson Street.

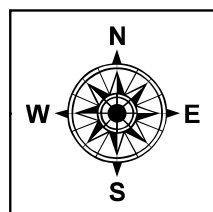
The International District is located in South Downtown Seattle and is home to a diverse population of people, with 54% of residents classified as Asian in the 2000 Census. The District contains approximately 2 acres of park space for 119 acres, or 1.7%. Overall, Seattle has 11.3% of park area for total land area (TPL, 2007).

The parks in the International District were mostly founded after the Seattle Chinatown-International District Public Development Authority formed in 1975. These parks include Hing Hay Park, a centrally located plaza that has recently been expanded; Kobe Terrace Park, which also encompasses the Danny Woo Community Garden; the International Children's Park, a play area; and Beacon Place, a small parcel of land east of the I-5 highway. Street trees make up most of the additional vegetation, although some private buildings also incorporate plants into their parcels.

The need for more open space in the International District is apparent, and this project aims to incorporate open space into the King Street Vision and finding additional ways to connect the existing open spaces into the International District neighborhood through enhancing the pedestrian experience along King Street.

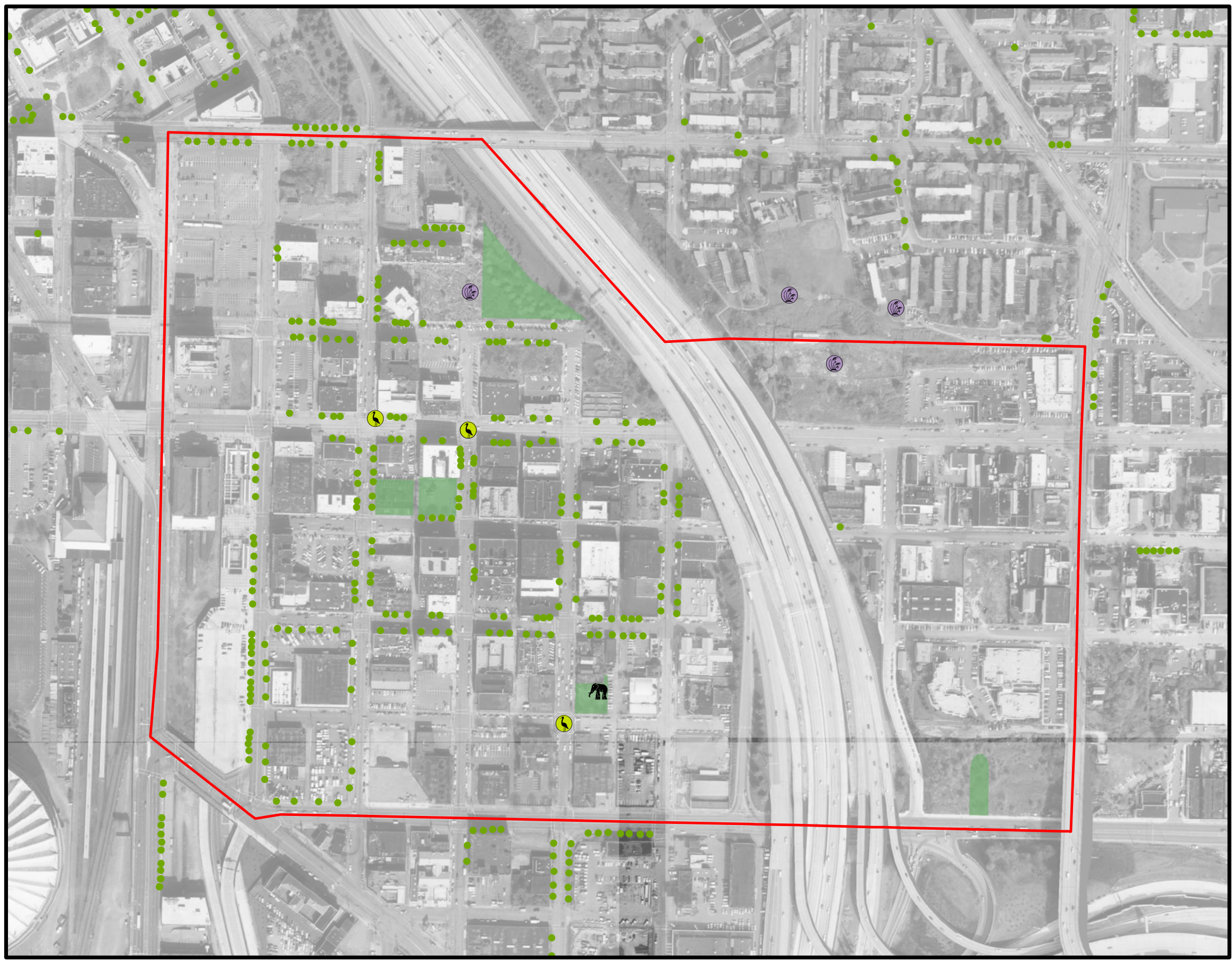
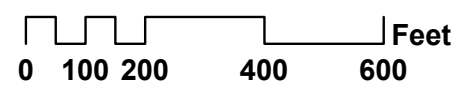


Parks and Open Space



Legend

- International District
- Community Garden
- Public Art
- Street Tree
- Parks



Hing Hay Park

“Park for Pleasurable Gatherings”

Location: S King Street and Maynard Avenue

Size: 0.3 acres

Year Built: 1970-1975

Landscape Architect: S. K. Sakuma

Built Features: Pavilion, chess tables, benches, community information board, water fountain, mural

Connection: Pavilion donated by the Taiwanese government in 1975

Events: Lunar New Year Celebration; Chinatown-International District Night Markets (with International Dance Night, Martial Arts Night, etc.); live music



Photo: Hing Hay Park

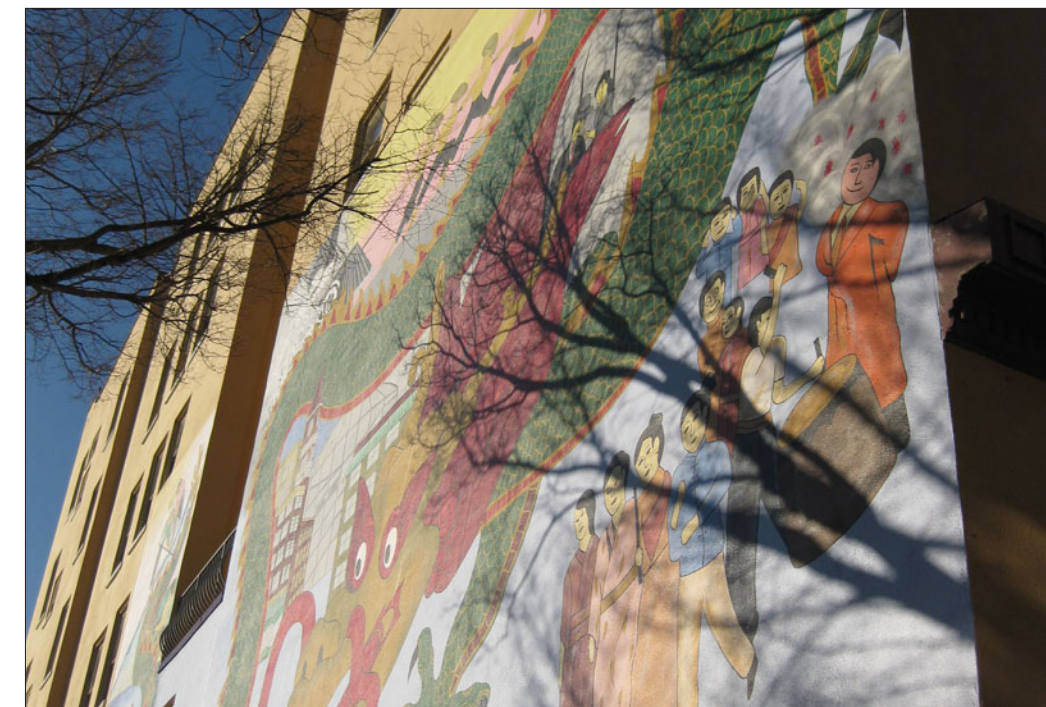


Photo: Mural on building adjacent to Hing Hay Park

Kobe Terrace Park

Location: South Main St and Maynard Ave. S

Size: 1 acre (incorporates part of Danny Woo Community Garden)

Features: Mt. Fuji cherry trees; four-ton, 200-year-old Yukimidoro stone lantern

Year Built: 1975

Designed by: William Teufel; Wood structures designed by Howard S. Wright design/build studio of the University of Washington College of Architecture and Urban Planning under the direction of Steve Badanes (Fremont Troll)

Connection: Lantern was donated by the city of Kobe, Japan (one of Seattle's "sister cities")

Other Info: Yukimidoro means "View of the Snow", view of Mount Rainier to the south (from Seattle Park's website)

Events: Cherry trees blossom in March



Photo: Benches along Kobe Terrace Garden path



Photo: Lantern at top of hill and edge of Kobe Terrace Garden

Danny Woo International District Community Gardens

5

Location: South Main St and Maynard Ave. S, adjacent to Kobe Terrace Park

Size: 1.5 acres

Features: 99 garden plots; retaining walls and terracing; French drainage system; tool shed, an entry gate, stairs, elevated garden beds for gardeners with physical disabilities

Year Built: 1975

Designed by: Local residents

Connection: "A number of gardeners get seeds from relatives in their native countries and use their traditional farming techniques to grow what is in their plots. Some of the foods they grow are not sold in America, so they save their seeds from year to year." (From Inter*Im website)

Other Info: Managed by Inter*Im. The Woo family, City of Seattle, and Department of Transportation own different sections of the garden

Events: Annual Pig Roast



Photo: View from garden pathway



Photo: Sign for gardens at bottom of hill, Maynard Ave



Photo: Entrance to garden

Street Trees

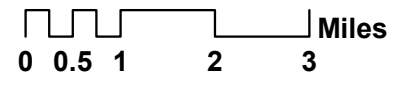
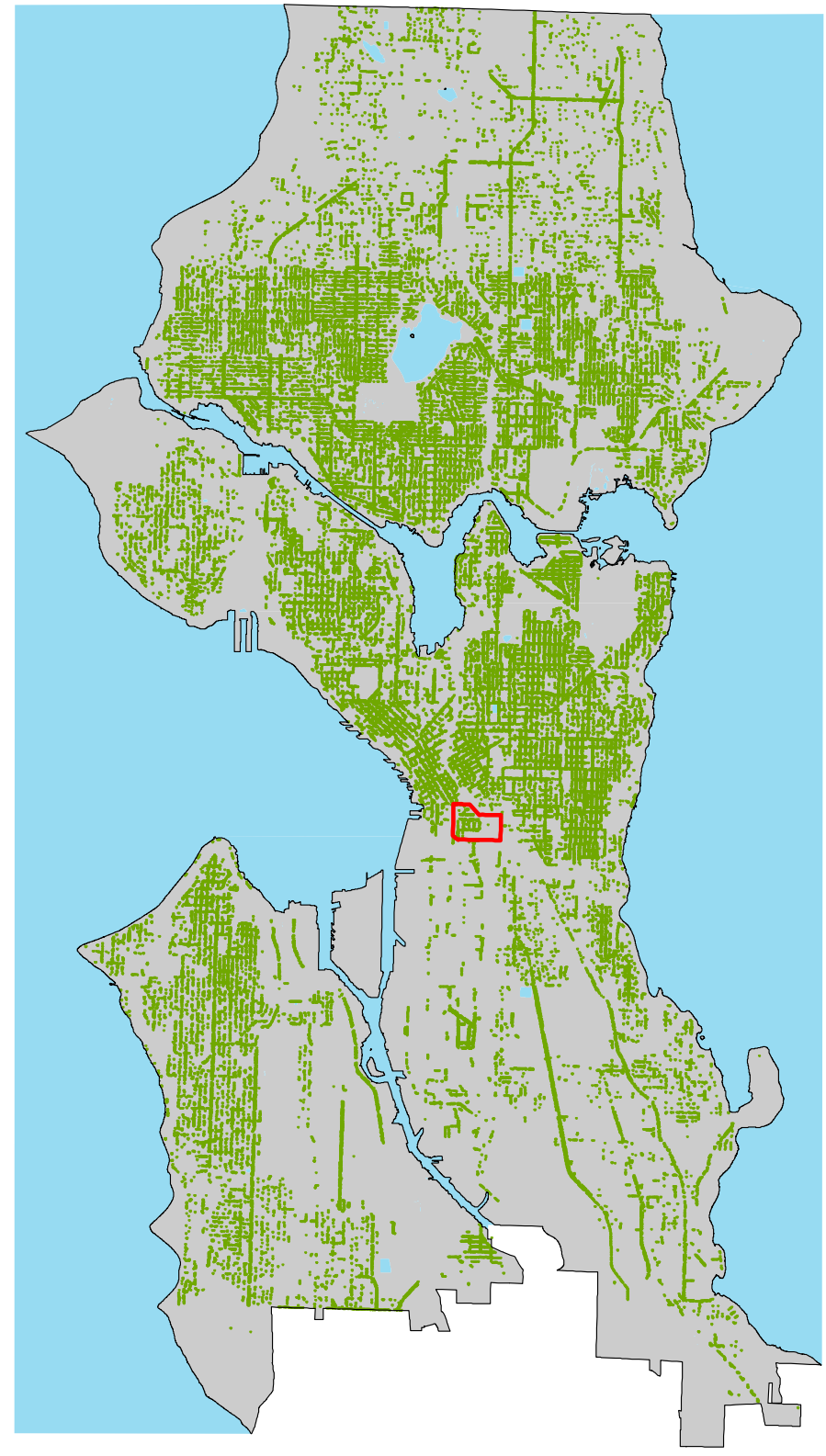


Photo: Street tree west of I-5 in the International District.



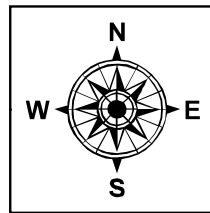
Photo: Street tree east of I-5 in the International District.

Although the west side of I-5 in the International District has a healthy number of street trees, the east side is severely lacking in trees. This gives a much different atmosphere to the pedestrian experience in the two parts of the District. The City of Seattle encourages the planting of street trees by private landowners in the public realm, with specific guidelines and an application process available on the SDOT web site.











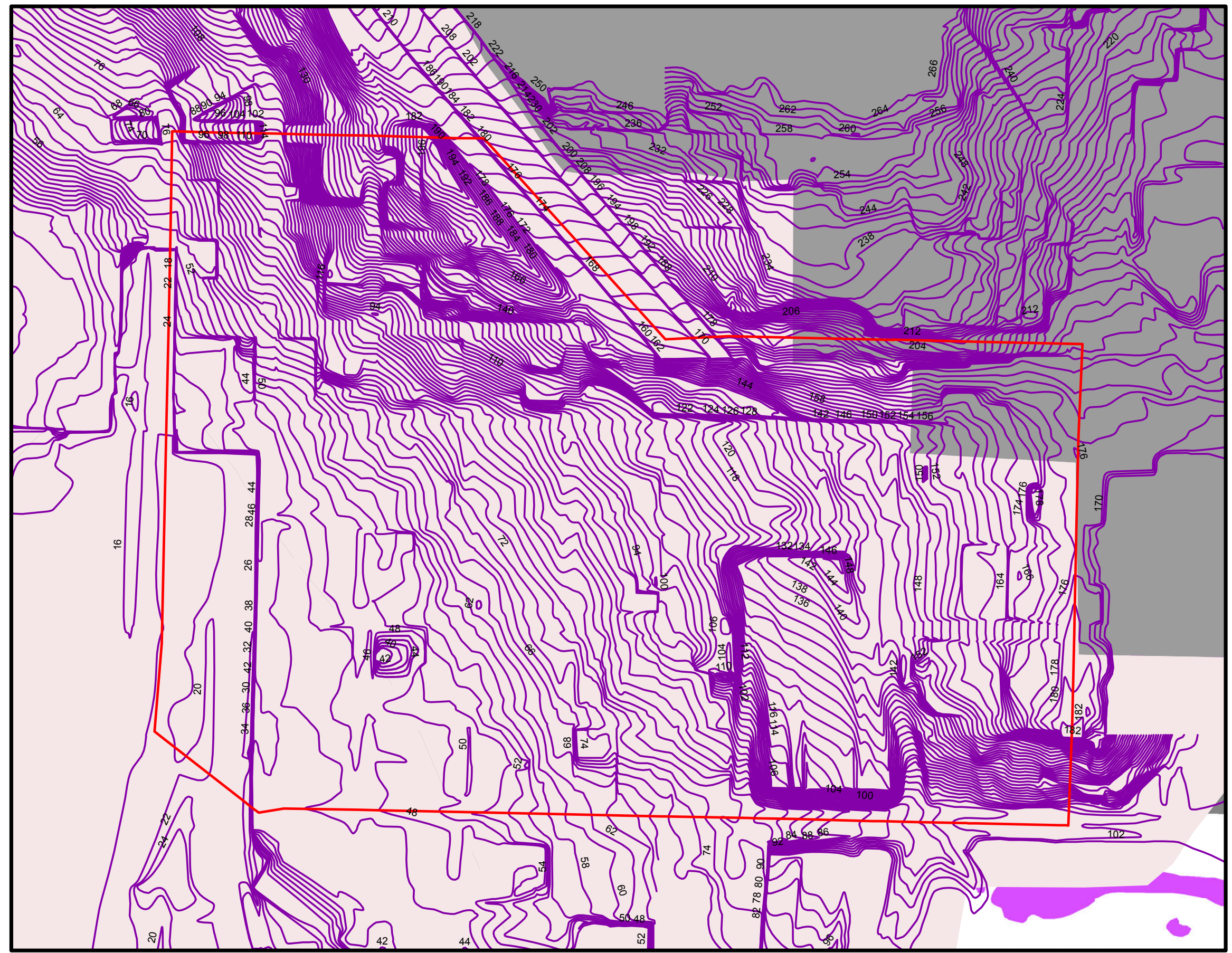
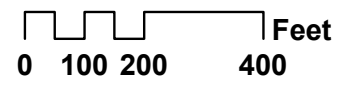
Topography and Geology

7

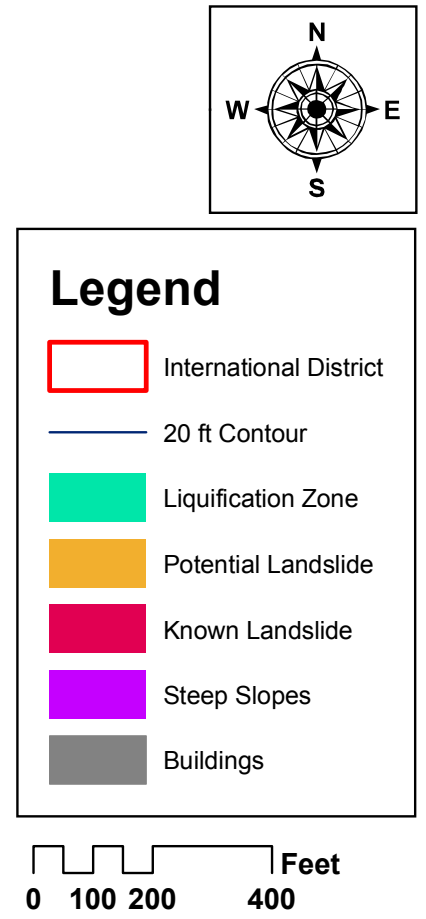


Legend

-  International District
-  2ft Contour at 10ft interval
-  2 ft Contour
- 
-  Qvt (till/hardpan)
-  m (silt/sand/debris/slag)
-  Steep Slopes
-  Buildings



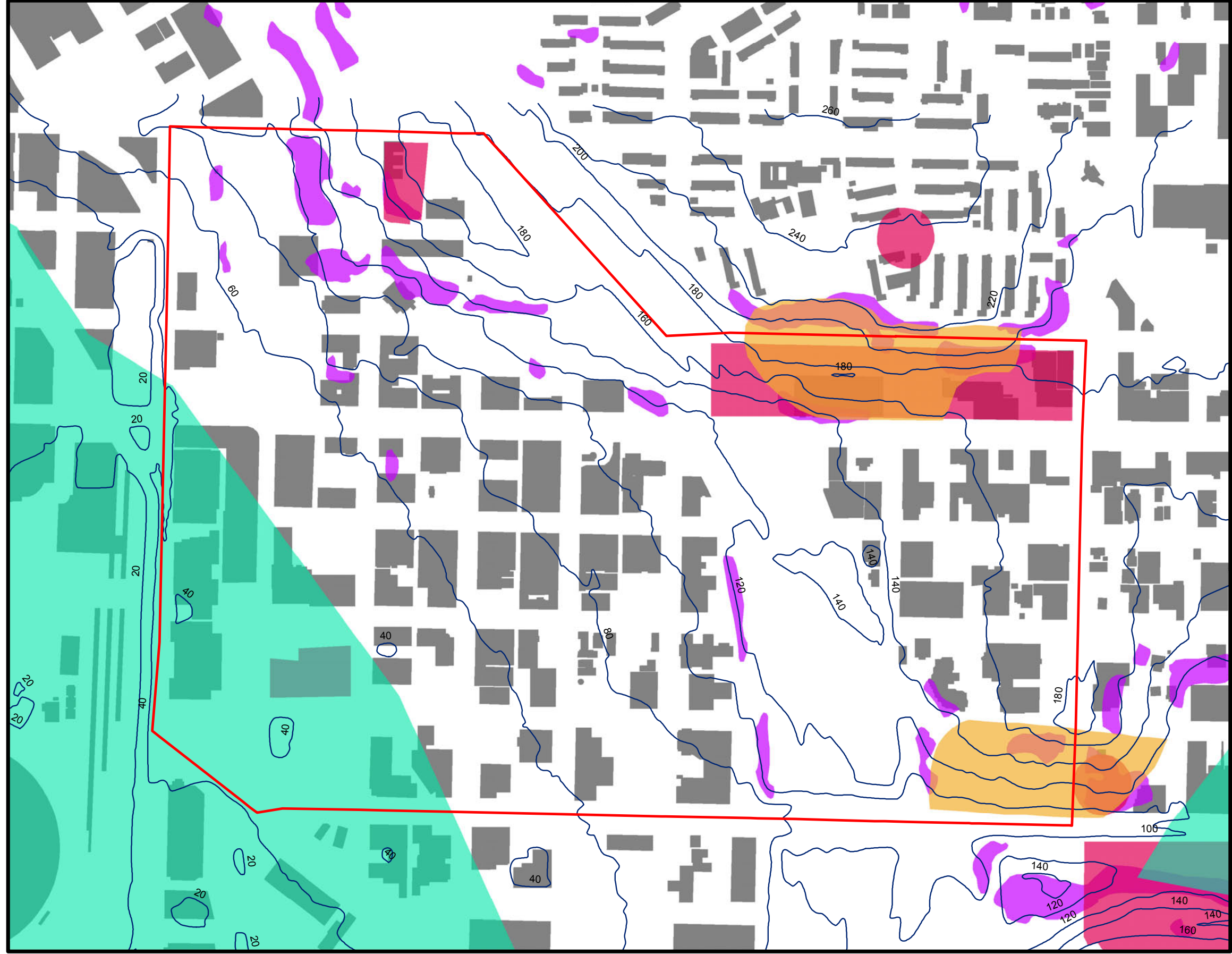
Topographical Hazards



Legend

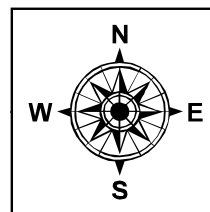
- International District
- 20 ft Contour
- Liquification Zone
- Potential Landslide
- Known Landslide
- Steep Slopes
- Buildings

0 100 200 400 Feet



Drainage and Watersheds

9



Legend

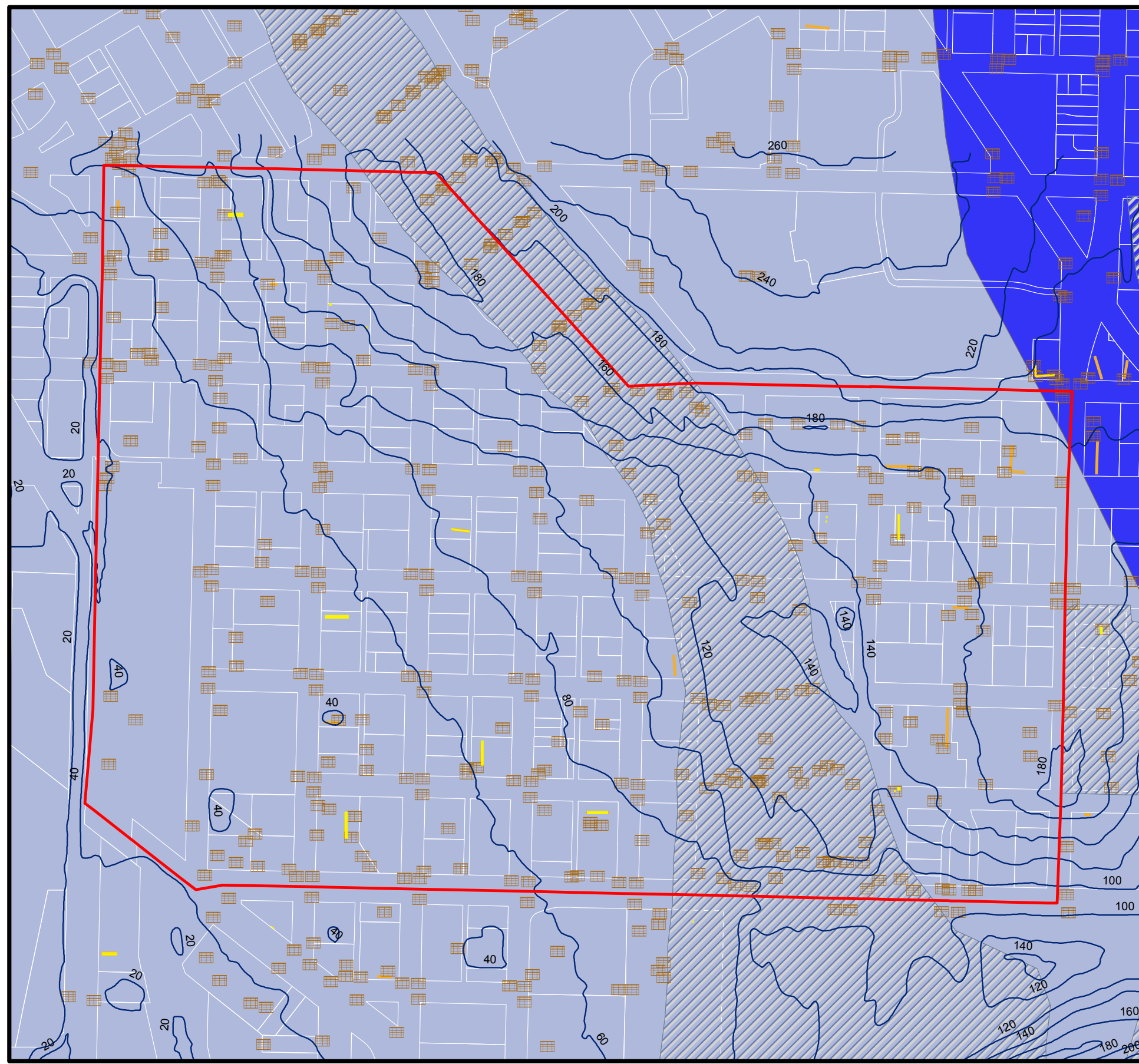
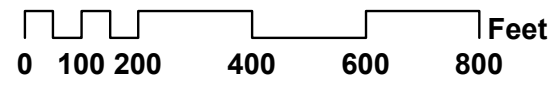
- International District
- 20 ft Contour
- Drainage and Wastewater Structures
- Catch Basin
- Drainage and Wastewater Detention Systems
- Manufactured Drainage Basin
- parcel

Watershed Drainage Basin

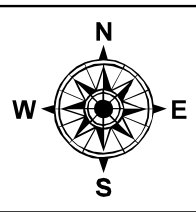
- <all other values>

Basin Name

- Elliott Bay
- West Lake Washington - Seattle South
- Water (none)
- Stream (none)
- Flood Zones (none)
- Wetland (none)



Drainage and City Water Systems



Legend

- International District
- Sewer/Drainage Lateral Point Feature
- Sewer Mainline Point Features
- + Hydrant
- Catch Basin
- 💧 Water Appurtenances
- Drainage and Wastewater Detention Systems
- Sewer/Drainage Laterals
- Sewer/Drainage Mainlines
- Water Line Features
- CSO Basin
- Manufactured Drainage Basin
- parcel
- Land

