

Name: _____

January 21

Ground rules:

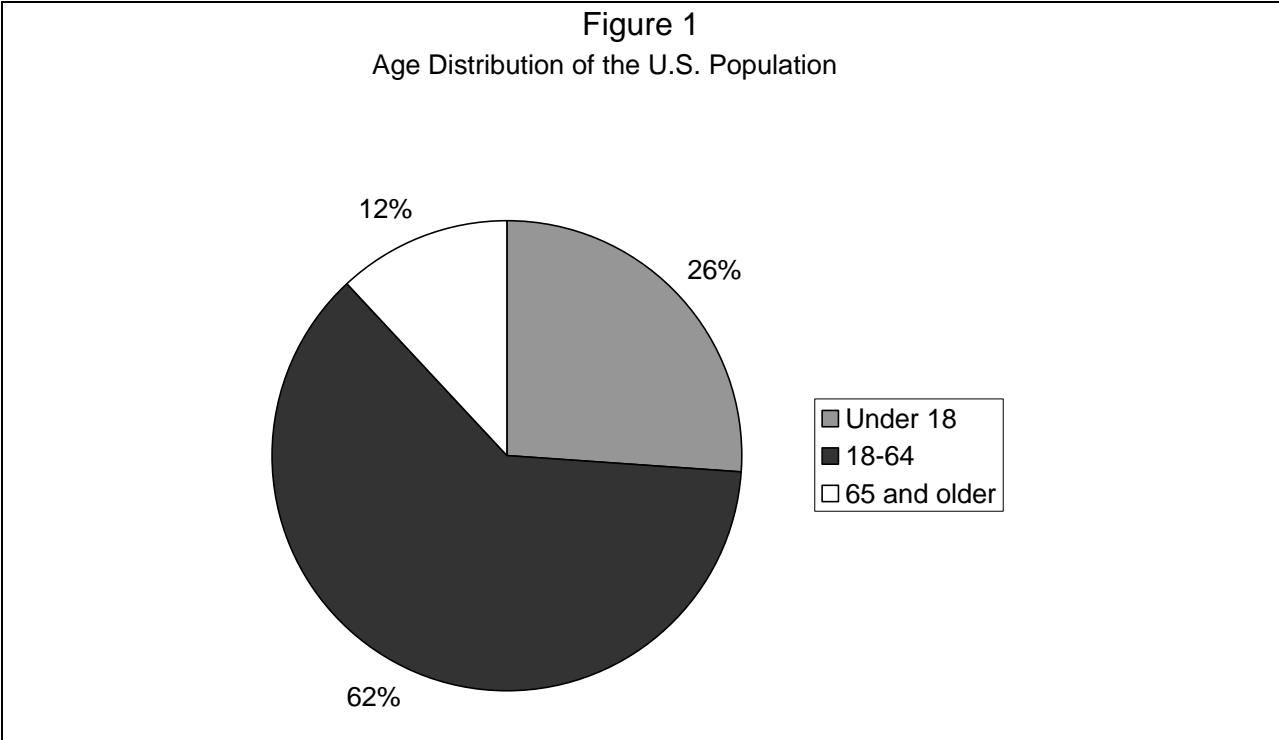
- DO NOT WRITE YOUR NAME ON THE QUIZ. If you're worried about losing the first page, write your student number on each page.
- You can use your notes or books, but you may not communicate with other people about this quiz nor the material covered by it.
- In order to receive as much credit as possible, please show all of your work. Showing that you understand the question and know how to set up the solution correctly is more important than arriving at the exact answer.
- Read each question carefully and answer all parts of each question.
- Good luck!

After each decennial census, the U.S. Census Bureau publishes briefs summarizing the census data for that decade. The following information and questions come from the report on the age of U.S. residents in 2000.¹ In 2000, the Census Bureau counted 281.4 million people in the United States. The Census Bureau reported that the median age of the U.S. population was 35.3 years of age. From these data, I estimated that the mean age for someone in the U.S. was 35.9 years.

1. Interpret the median age of the U.S. population in 2000 for a non-technical audience. (5 points)

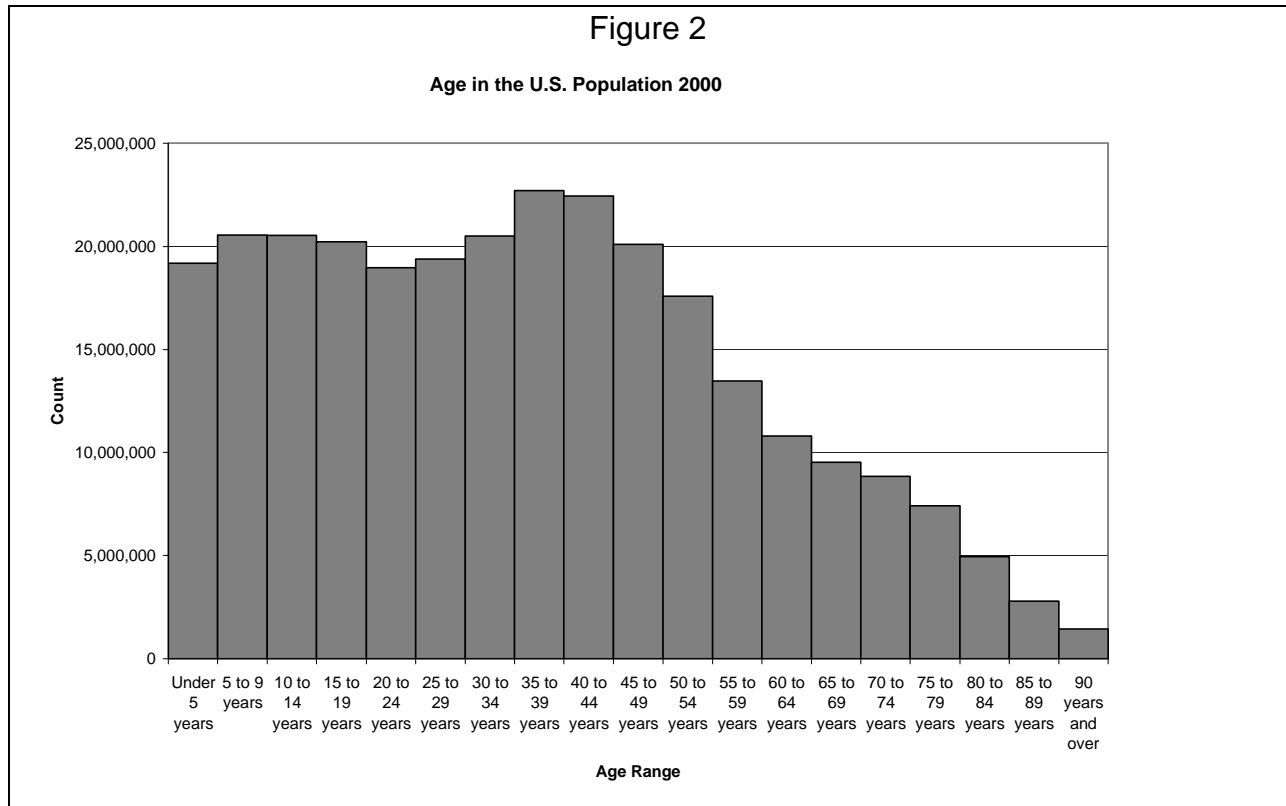
2. The Census reports only the median age for the U.S. population, not the mean. Why would the census bureau report prefer median age of the population as a measure of central tendency rather than the mean? (10 points)

¹ Meyer, Julie. 2001. *Age: 2000*. Census 2000 Brief, Report No.C2KBR/01-12. Washington, DC: U.S. Census Bureau. Available at: <http://www.census.gov/prod/2001pubs/c2kbr01-12.pdf>



- 3. What kind of information does Figure 1 present? Interpret the chart for a non-technical audience. (10 points)

- 4. Roughly how many people were ages 65 or older in the U.S. in 2000? Make sure to interpret your answer. (10 points)



Source: U.S. Census Bureau, U.S. Census 2000 Summary File 1 (SF 1) 100-Percent Data

5. What sort of graph is figure 2? (5 points)

6. Describe the distribution of the age of the U.S. population, including the shape of the distribution and its range. (10 points)

