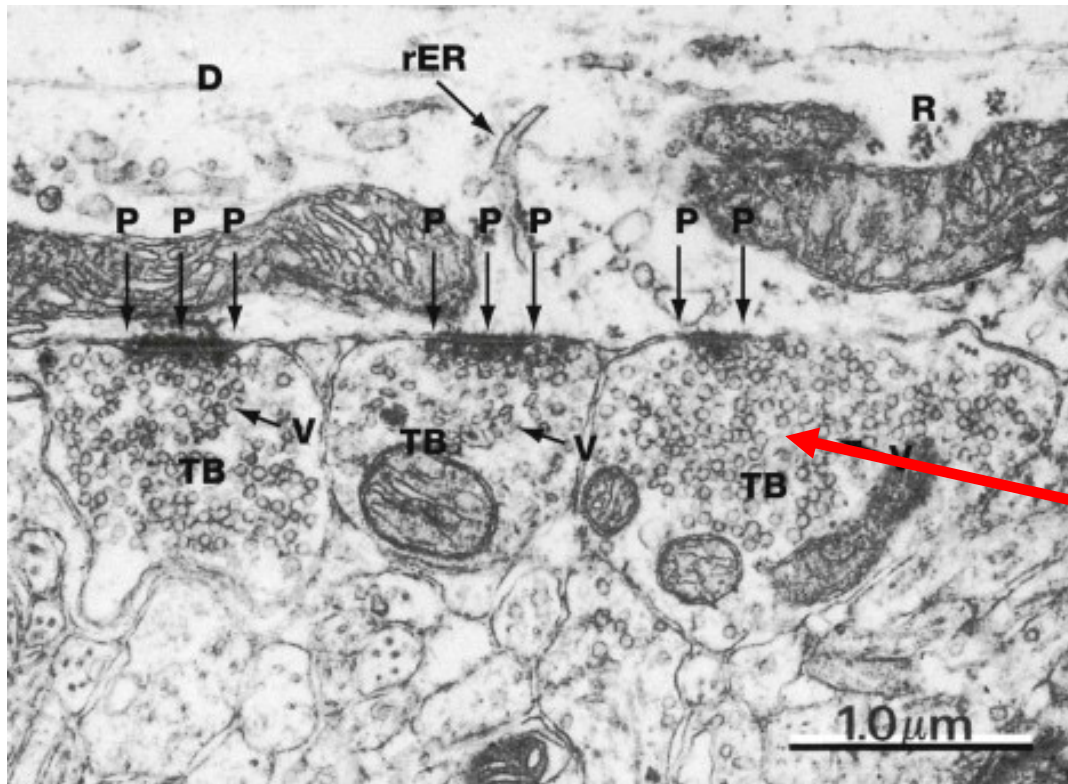
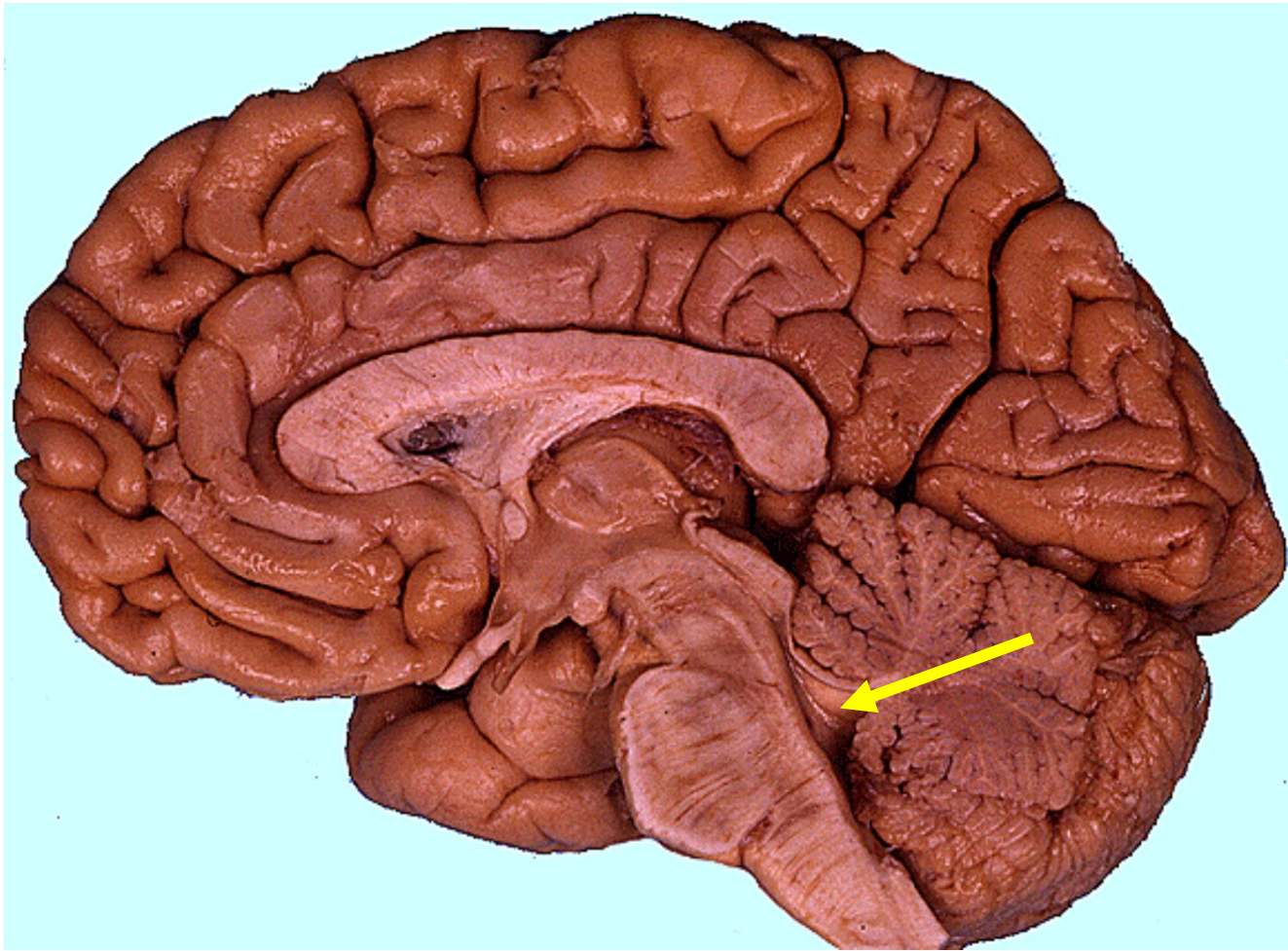


Quiz Section Test 2-AA
Answers are given in red.

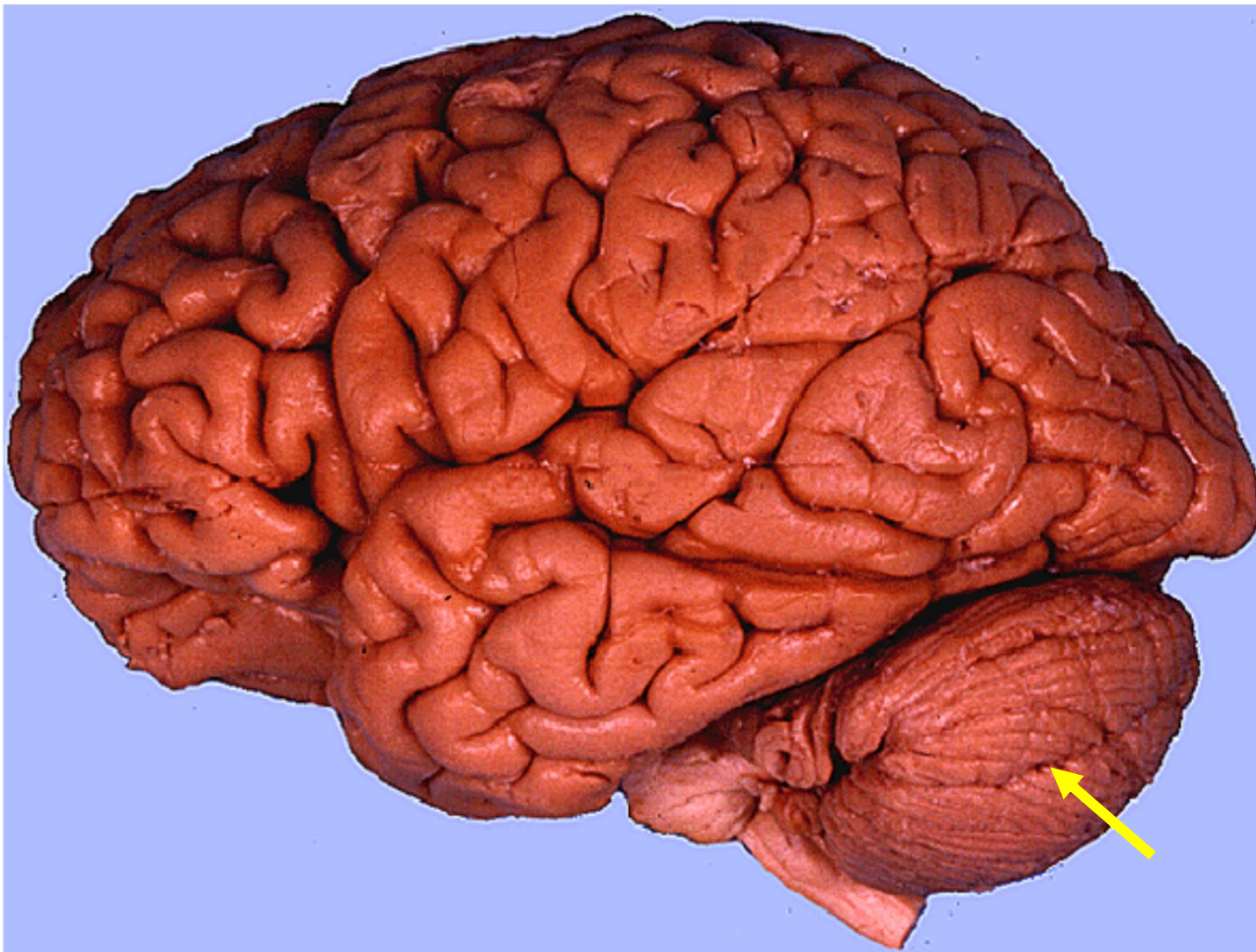


1. What part of the neuron is indicated by the arrow?
 - a. nucleolus
 - b. axon terminal**
 - c. cell body
 - d. dendrites



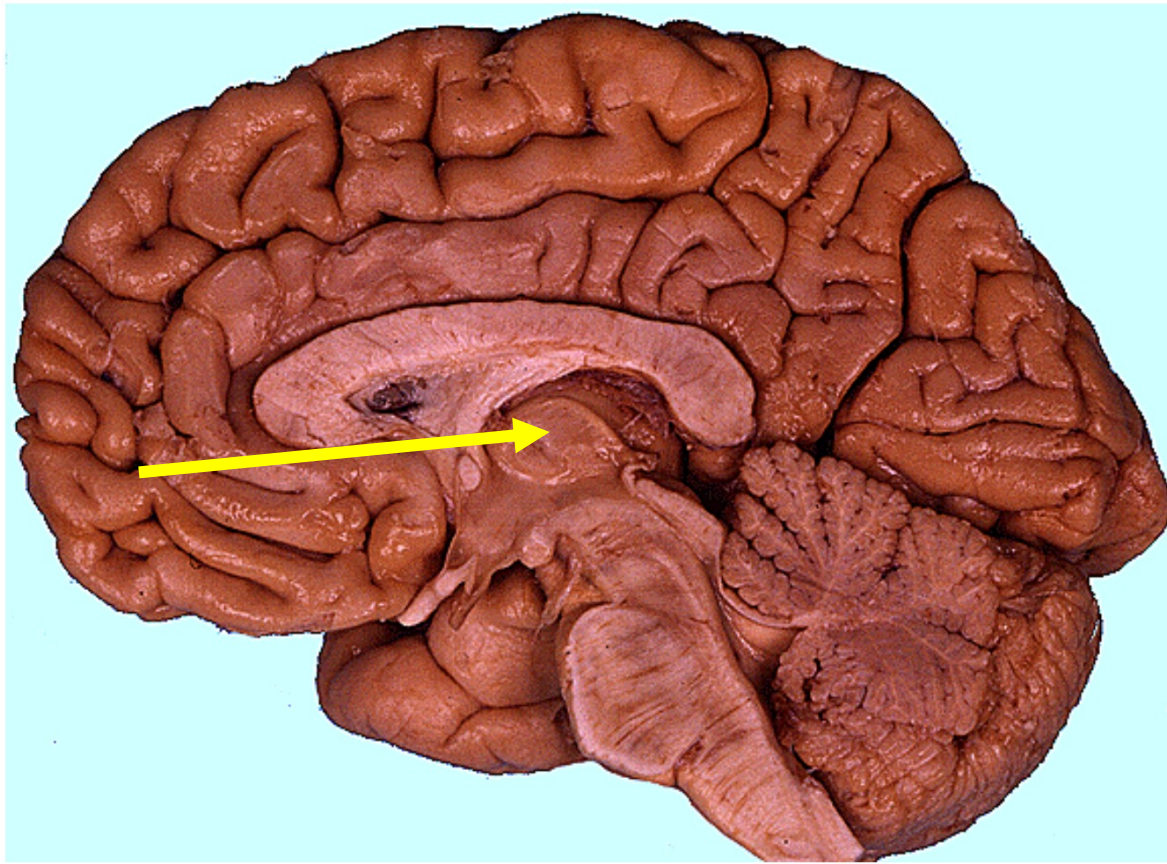
2. Name the space indicated by the arrow.

fourth ventricle



3. Name the structure indicated by the arrow.

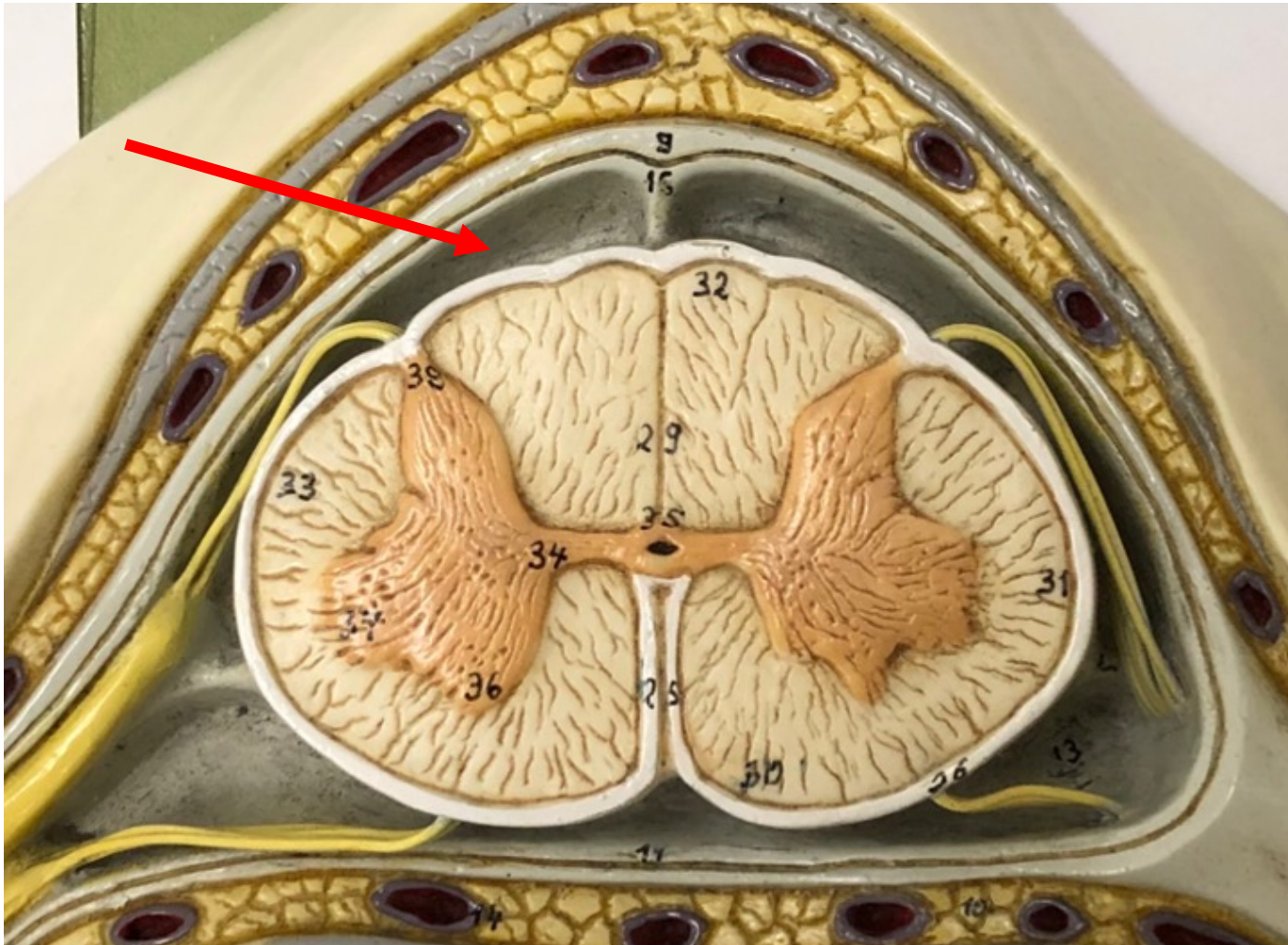
cerebellum



4. Which of the following is the structure indicated by the arrow?
- a. midbrain
 - b. thalamus**
 - c. hypothalamus
 - d. corpus callosum
 - e. medulla oblongata

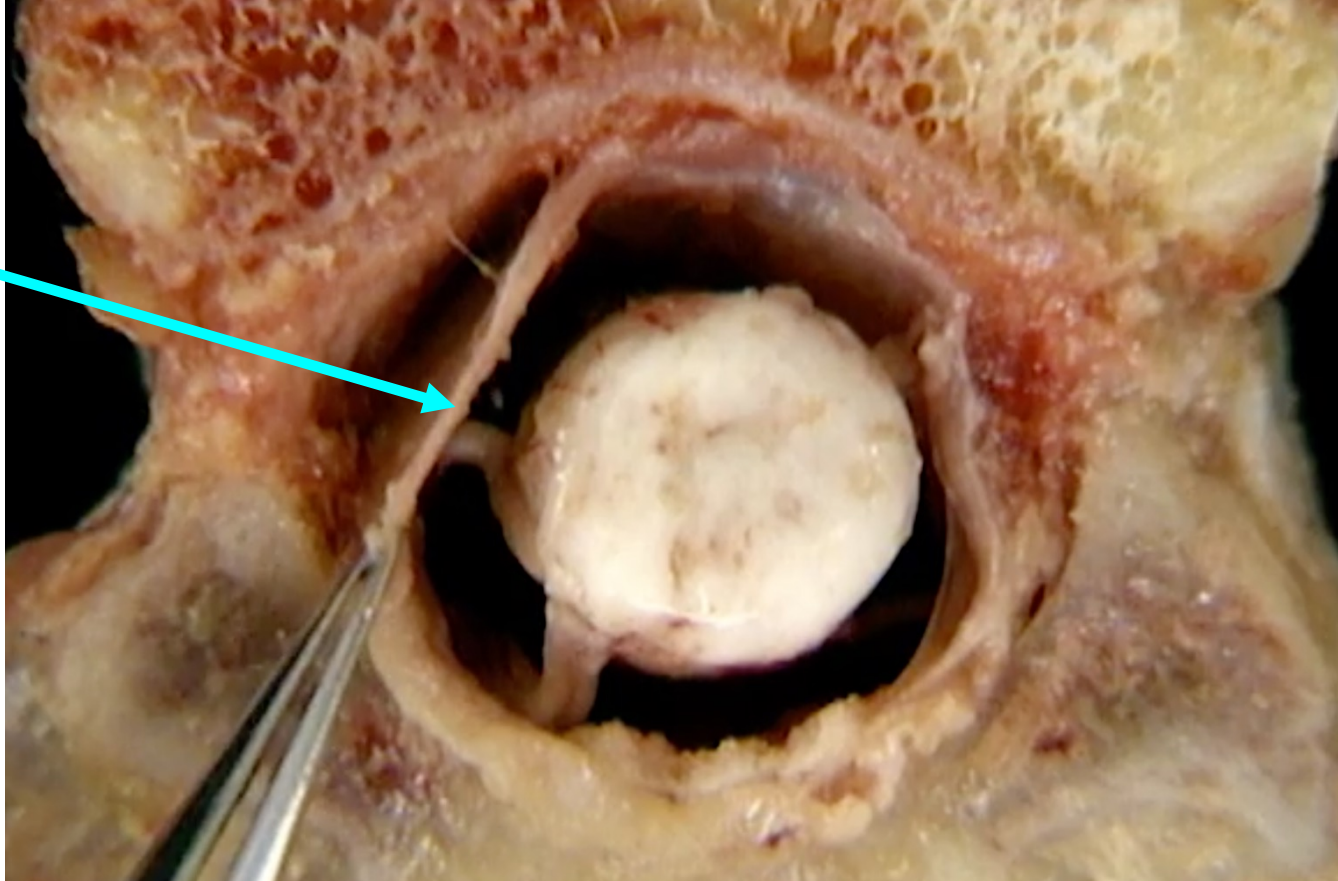
5. Which of the following structures degenerates in Parkinson's disease?

- a. thalamus
- b. corpus callosum
- c. **substantia nigra**
- d. medulla oblongata
- e. precentral gyrus

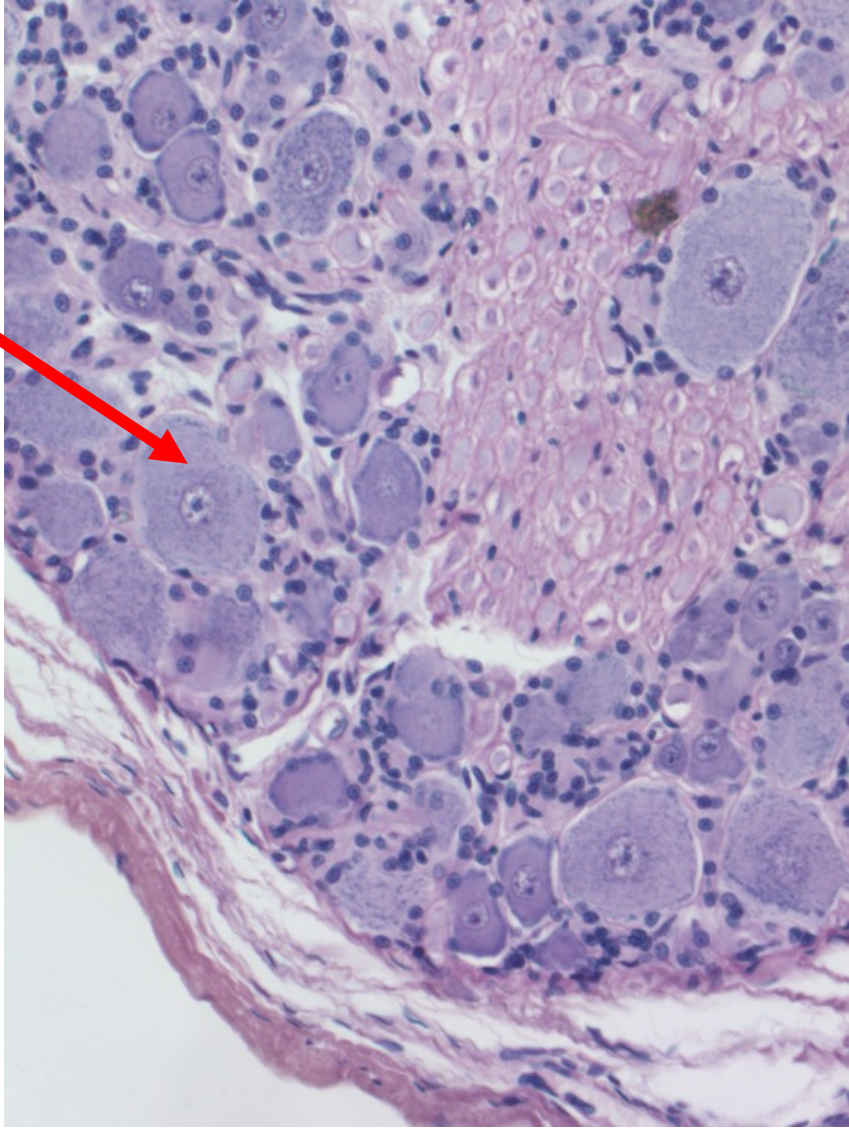


6. Name the space indicated by the pointer.

subarachnoid space



7. What is being grasped by the forceps and indicated by the blue arrow?
- a. pia mater
 - b. white matter
 - c. dorsal root
 - d. spinal nerve
 - e. **dura mater**



8. Which of the following cells is indicated by the arrow?
- a. **afferent neuron**
 - b. somatic motor neuron
 - c. parasympathetic preganglionic neuron
 - d. sympathetic postganglionic neuron
 - e. parasympathetic postganglionic neuron

9. Name the neurotransmitter released by sympathetic postganglionic neurons.

norepinephrine

10. Which of the following is NOT an efferent neuron?
- a. a neuron that sends a signal to activate a muscle cell
 - b. a parasympathetic neuron
 - c. a somatic motor neuron
 - d. a neuron that alters the heart rate
 - e. a neuron that senses touch in the finger