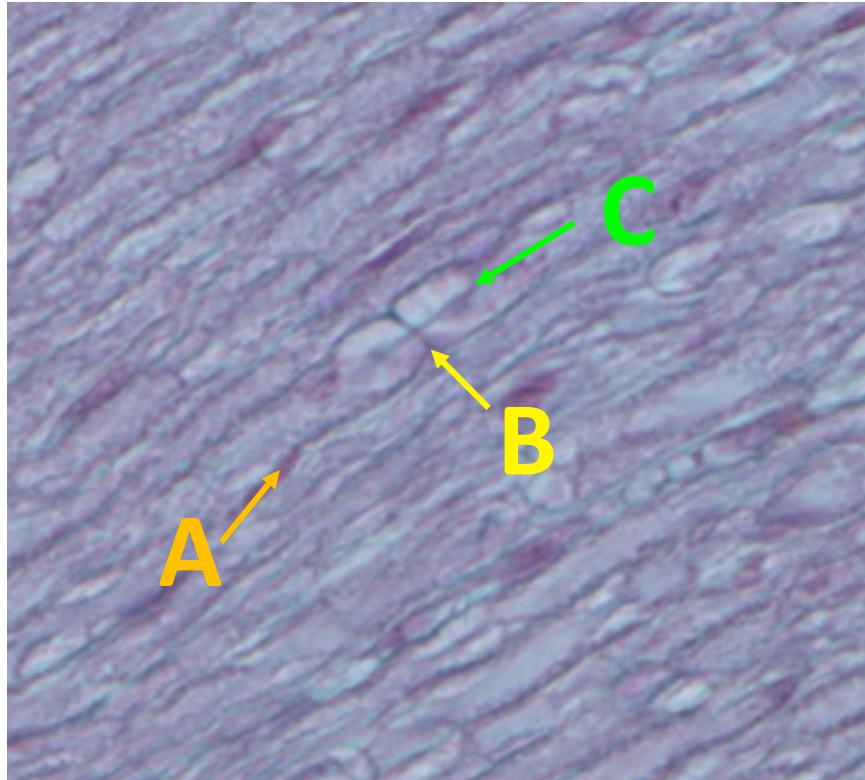
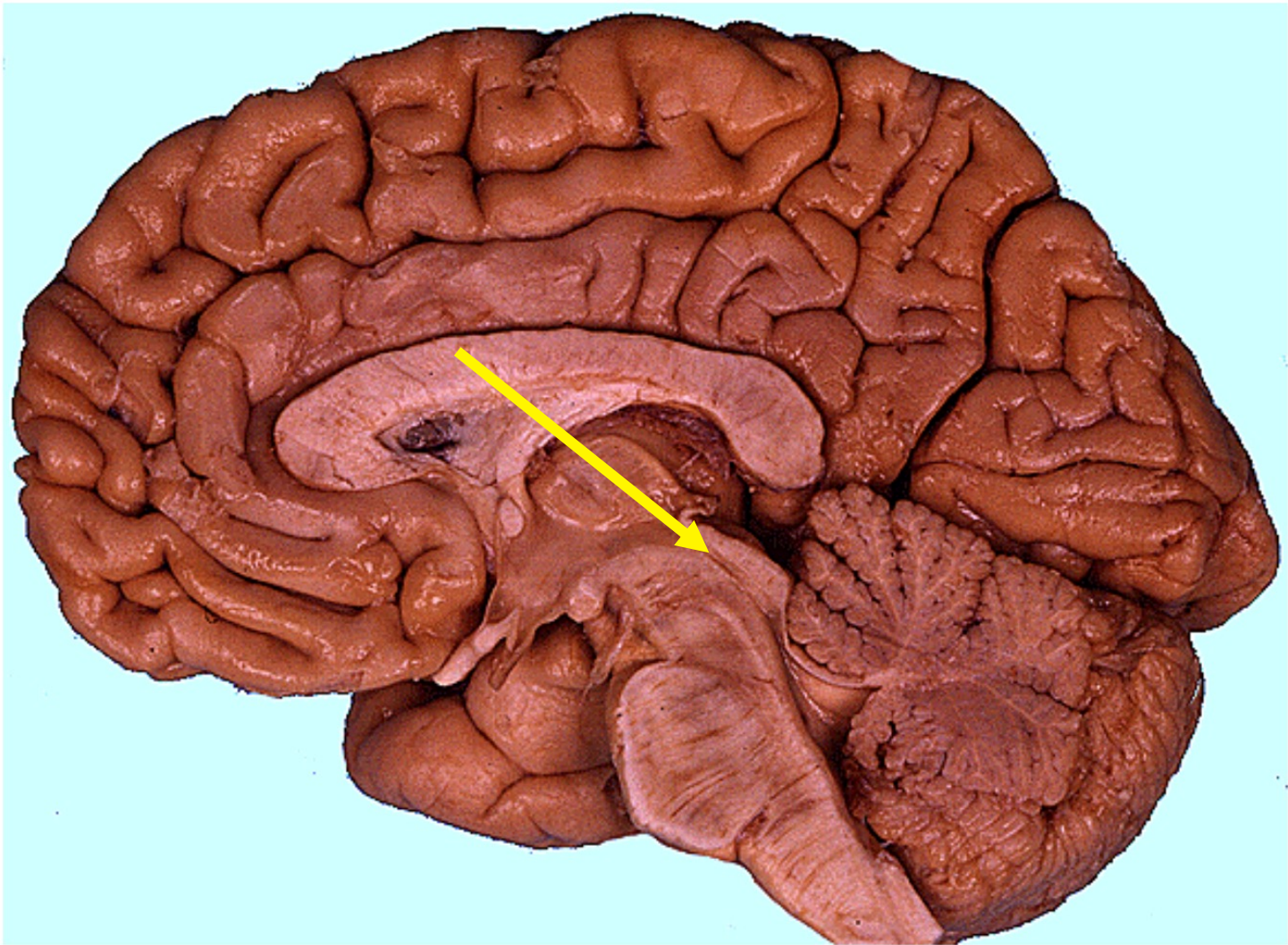


Quiz Section Test 2-AB
Answers are given in red.



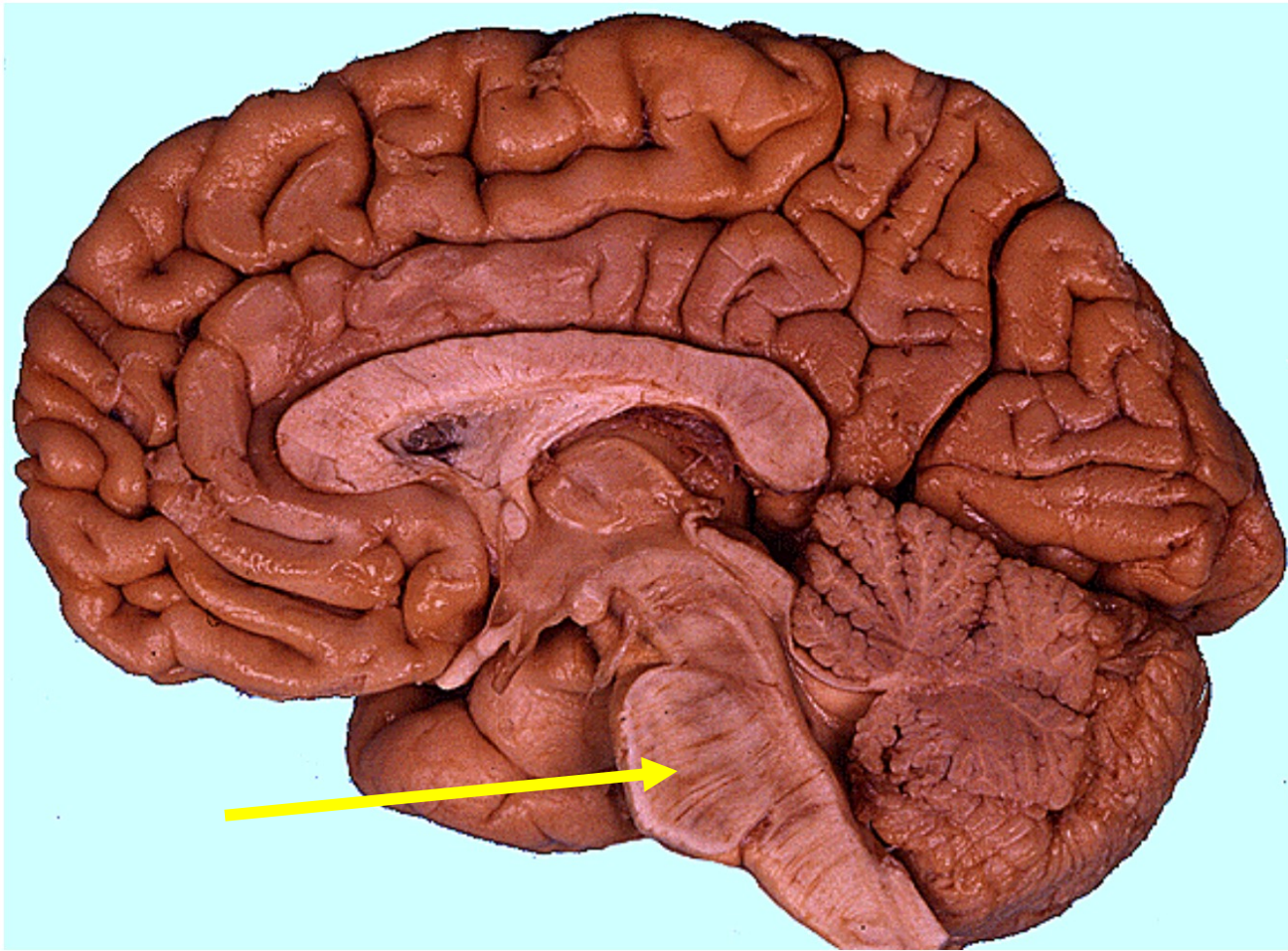
1. Which letter shows a node of Ranvier?

- a. A
- b. B**
- c. C



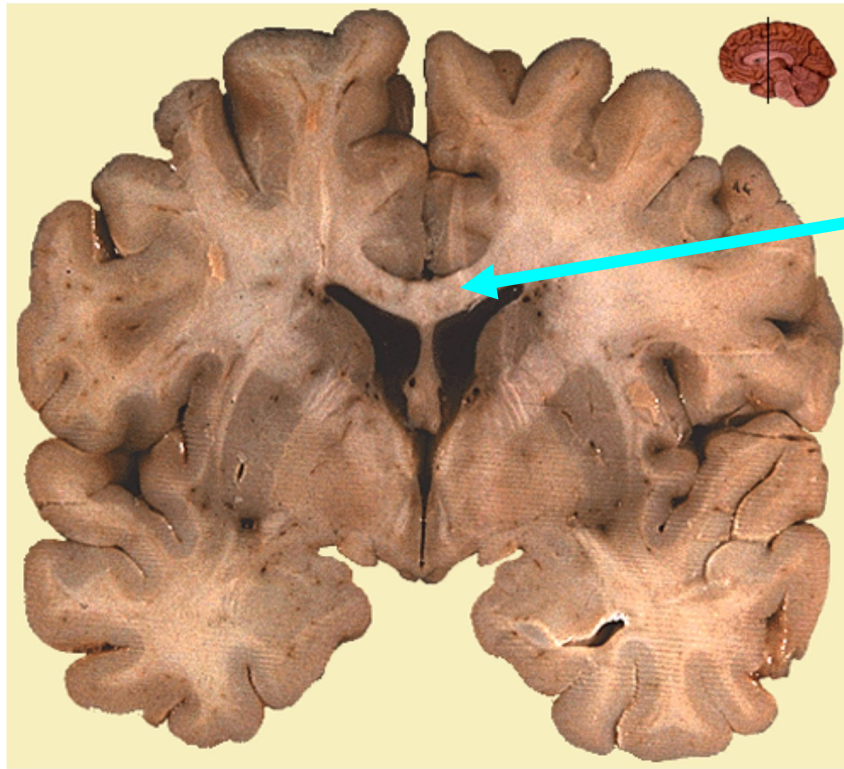
2. Name the passageway through the midbrain that is indicated by the arrow.

cerebral aqueduct



3. Name the structure indicated by the arrow.

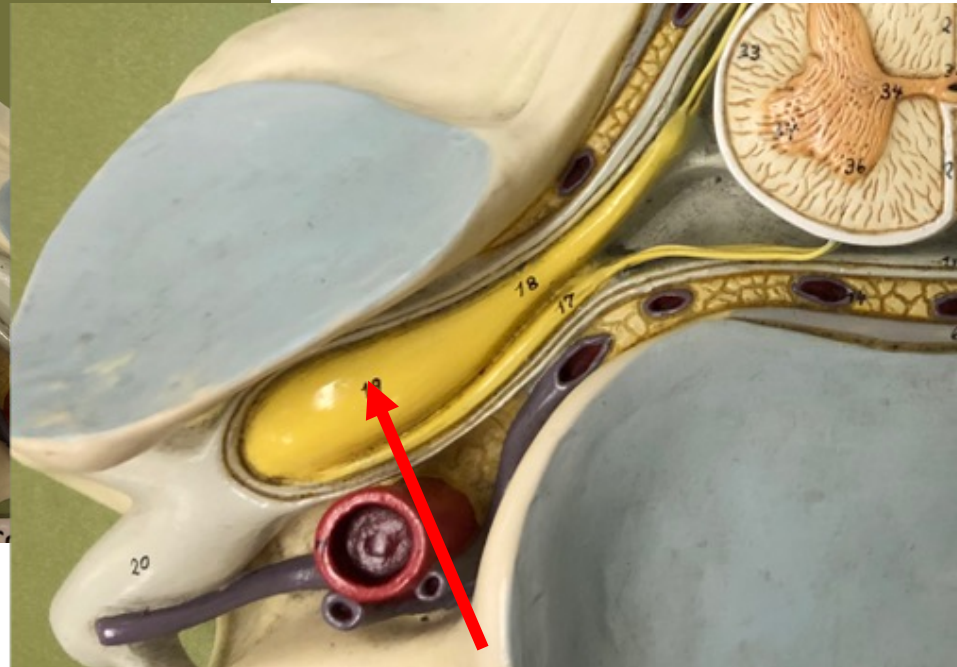
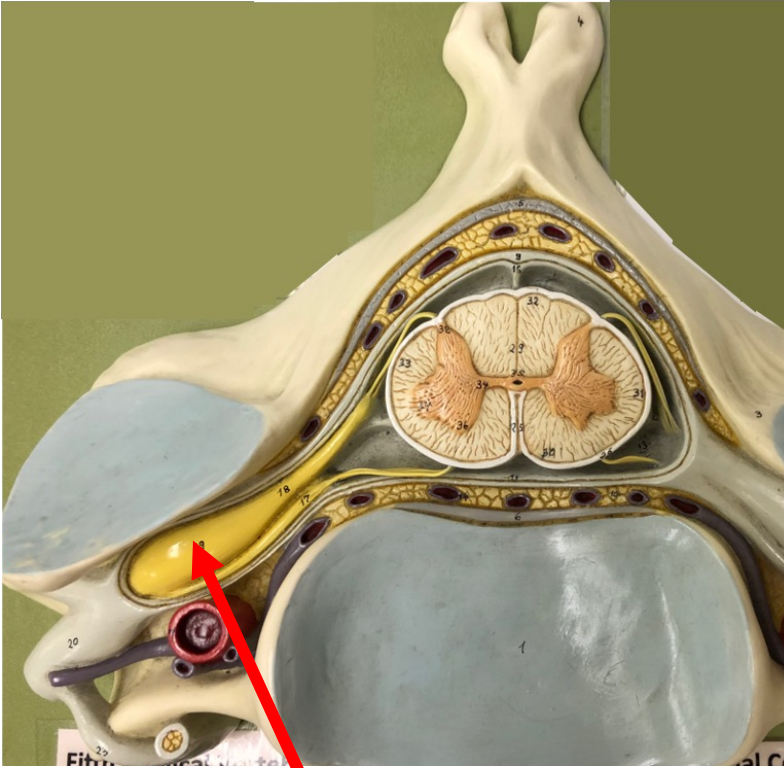
pons



4. Which of the following is indicated by the arrow?
- a. thalamus
 - b. corpus callosum**
 - c. cerebral cortex
 - d. basal ganglia
 - e. substantia nigra

5. Which of the following is a symptom/sign that might occur if there was damage to the left motor cortex?

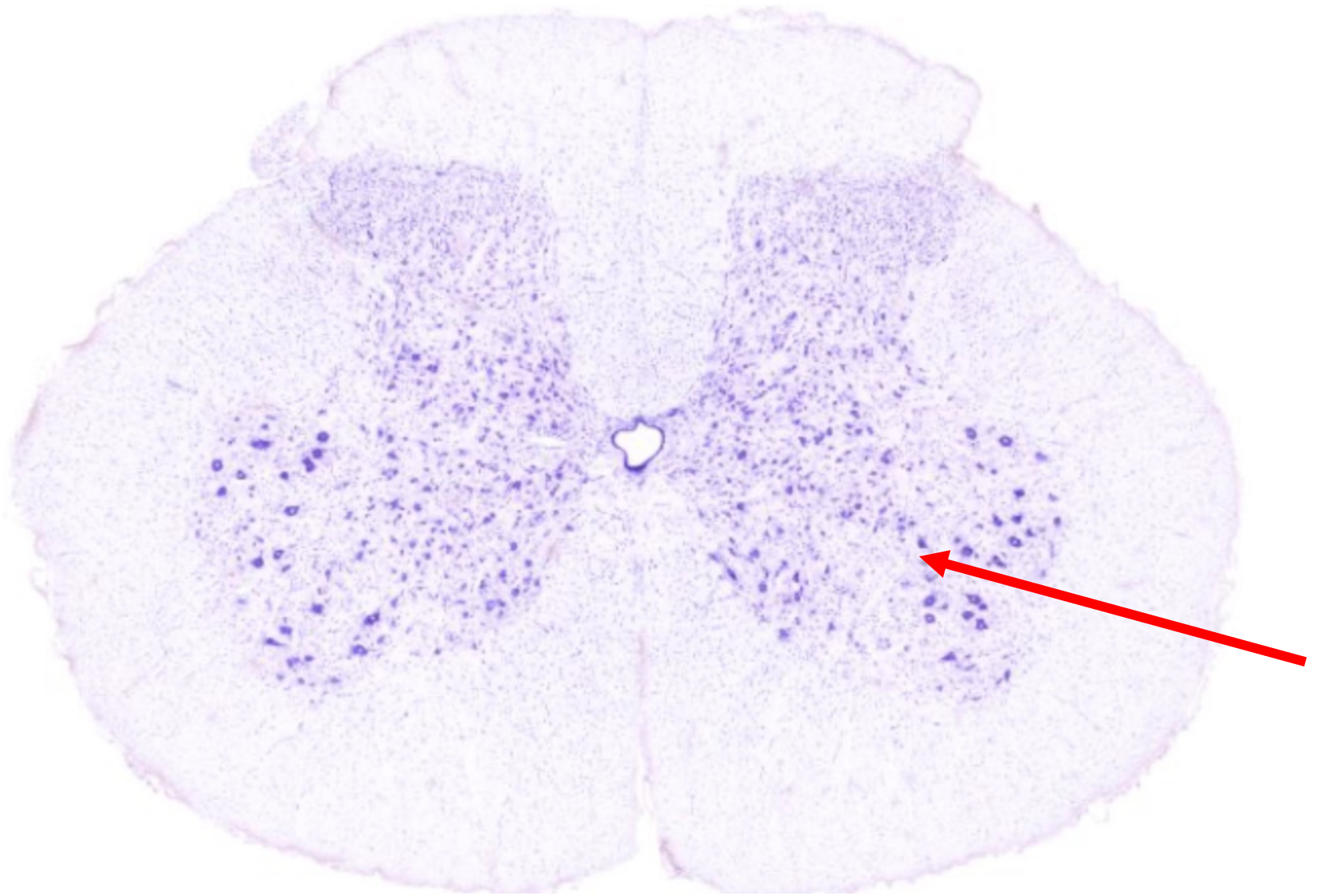
- a. weakness of the limbs on the left side of the body
- b. resting tremor
- c. bradykinesia
- d. hemianopia
- e. **weakness of the limbs on the right side of the body**



6. What type of neuron has its cell body in the location indicated by the arrow?
- a. sympathetic preganglionic neuron
 - b. upper motor neuron
 - c. somatic motor neuron
 - d. sympathetic postganglionic neurons
 - e. afferent neuron



7. Which of the following is shown by the arrow?
- a. **spinal nerve**
 - b. ventral root
 - c. dorsal root
 - d. sympathetic chain ganglion
 - e. dorsal root ganglion



8. Name the specific region of the gray matter indicated by the arrow.

ventral horn

9. Name the neurotransmitter released by parasympathetic postganglionic neurons.

acetylcholine

10. Which of the following is NOT an efferent neuron?
- a. a parasympathetic neuron
 - b. a somatic motor neuron
 - c. a neuron that alters the heart rate
 - d. a neuron that senses touch in the finger
 - e. a neuron that sends a signal to activate a muscle cell