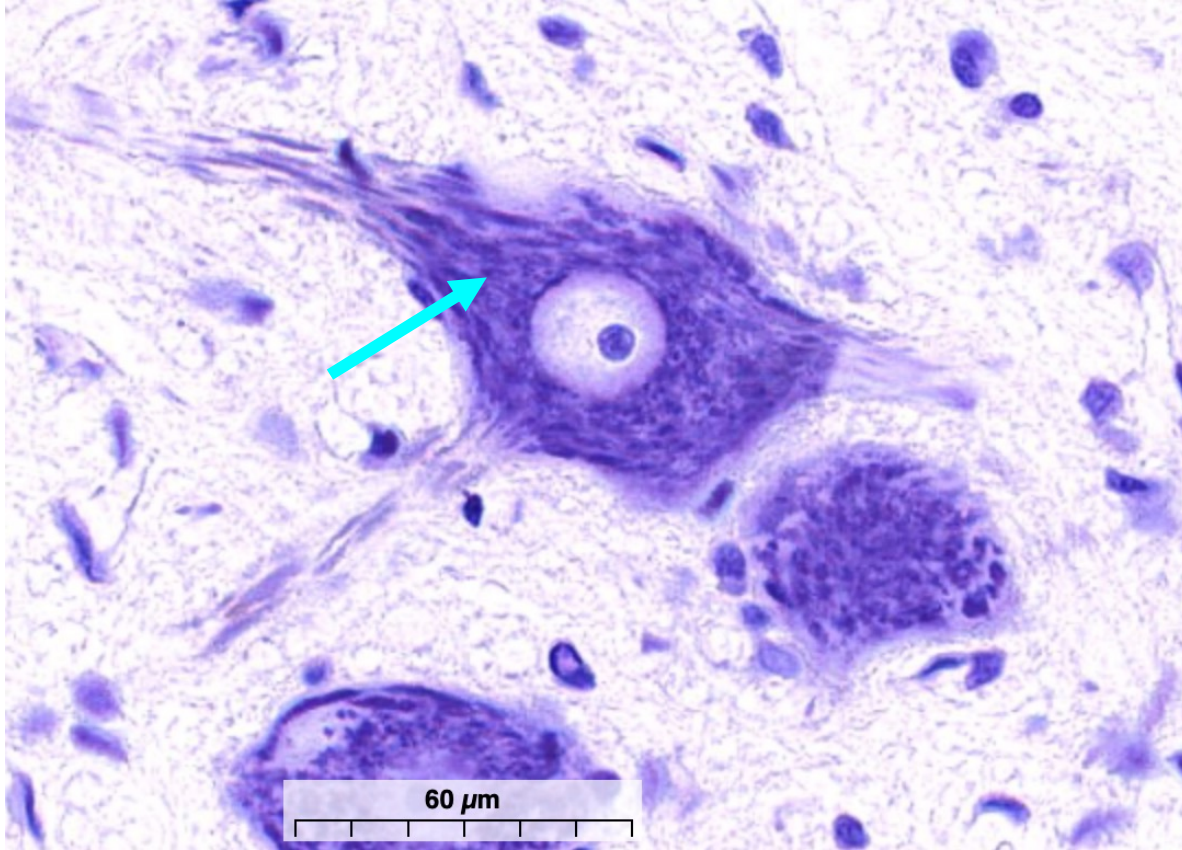
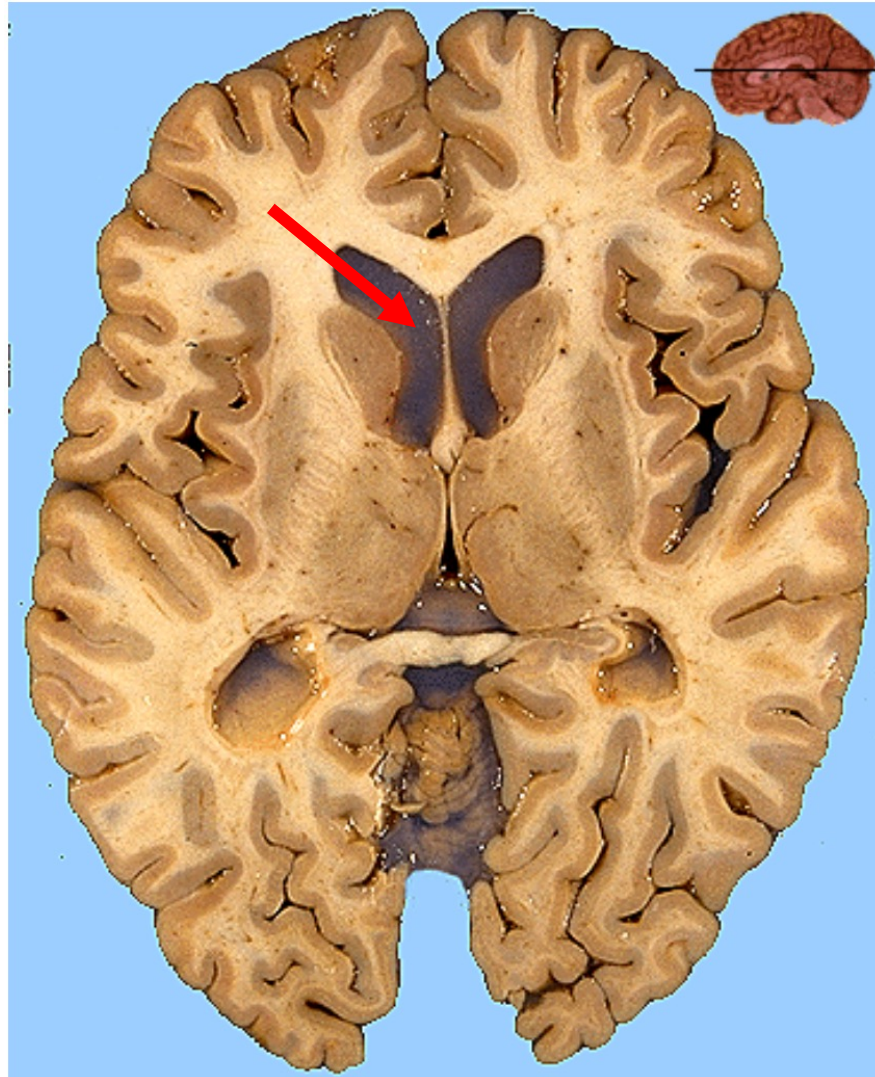


Quiz Section Test 2-AC
Answers are given in red.

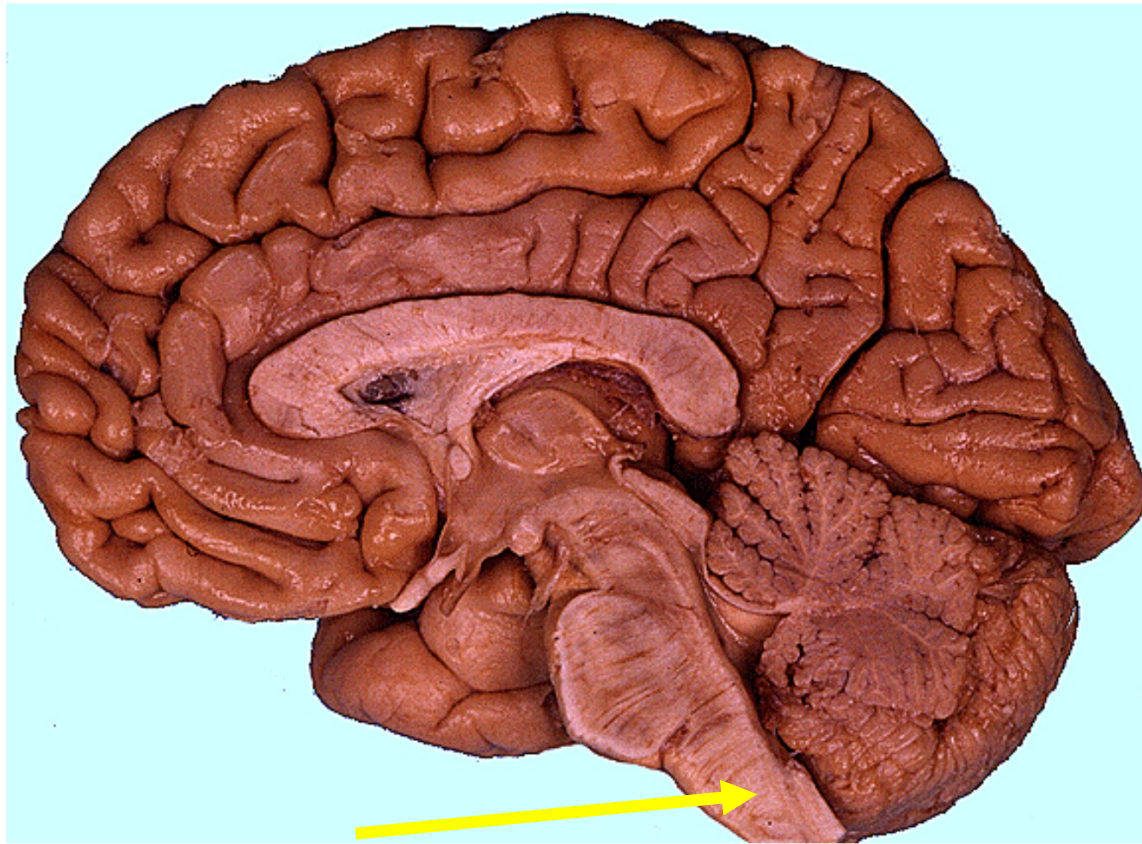


1. Which of the following is indicated by the arrow?
 - a. rough ER
 - b. microtubule
 - c. nucleus
 - d. nucleolus
 - e. dendrite

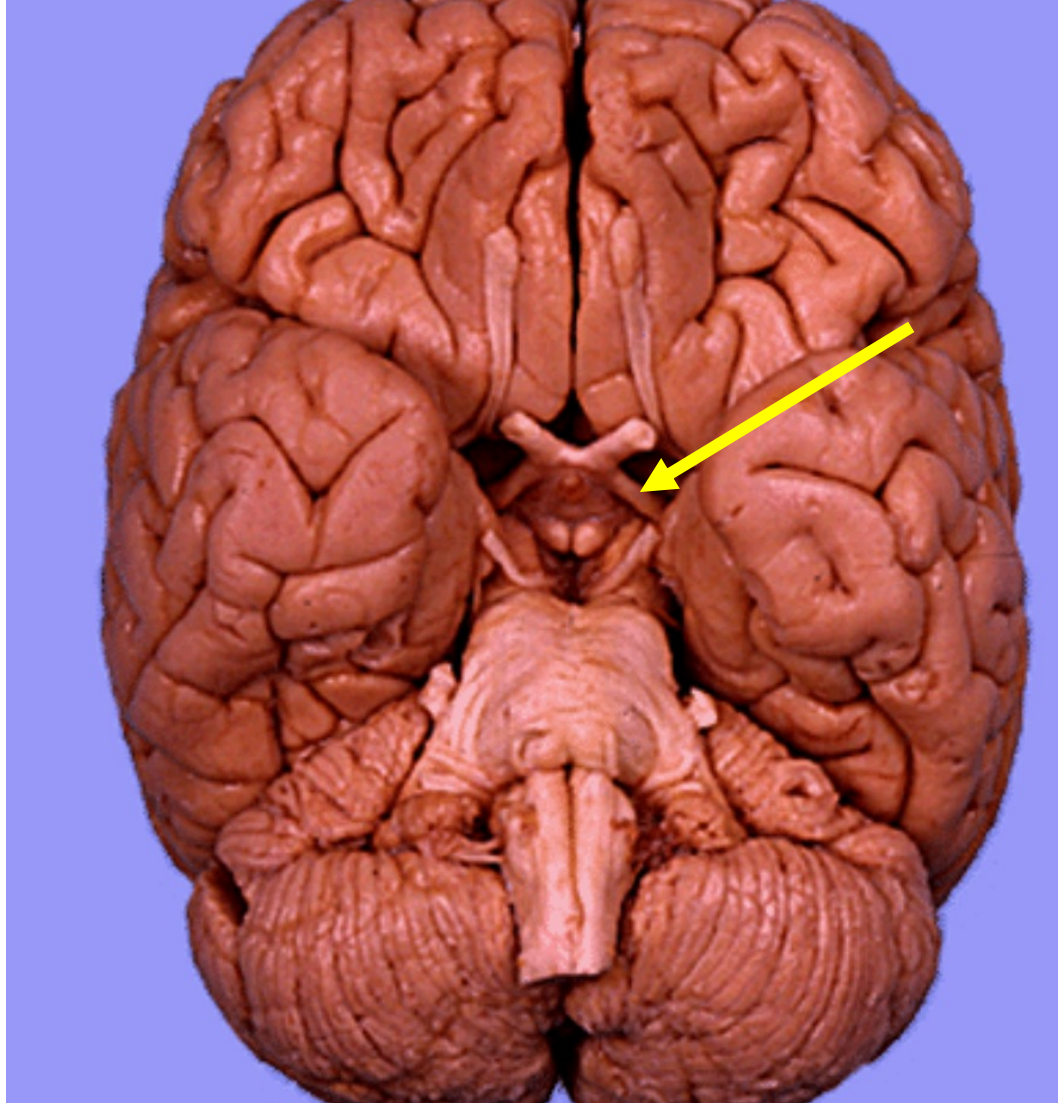


2. Name the space indicated by the arrow.

lateral ventricle



3. Which of the following is indicated by the arrow?
- a. midbrain
 - b. thalamus
 - c. hypothalamus
 - d. corpus callosum
 - e. **medulla oblongata**

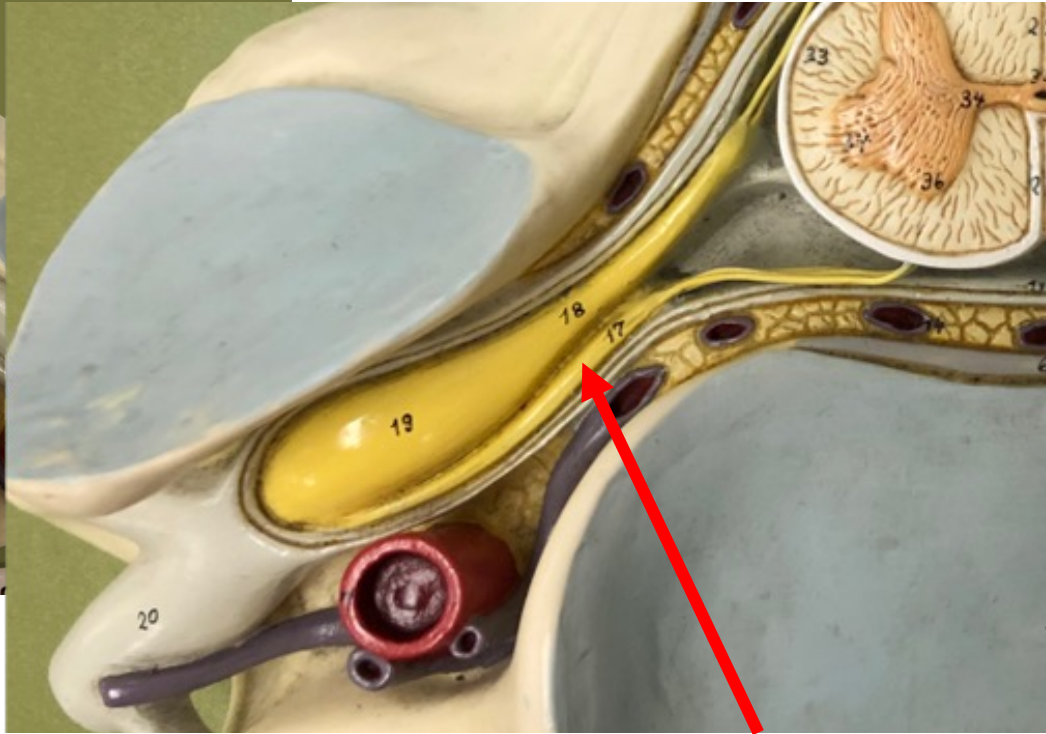
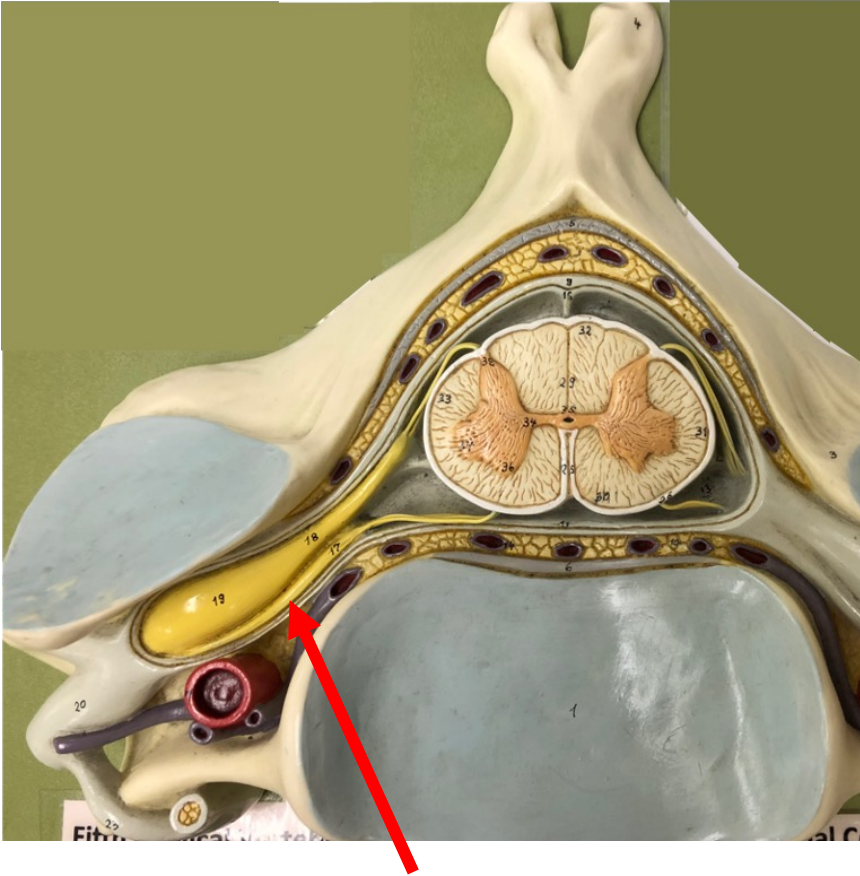


4. Name the structure indicated by the arrow.

optic tract

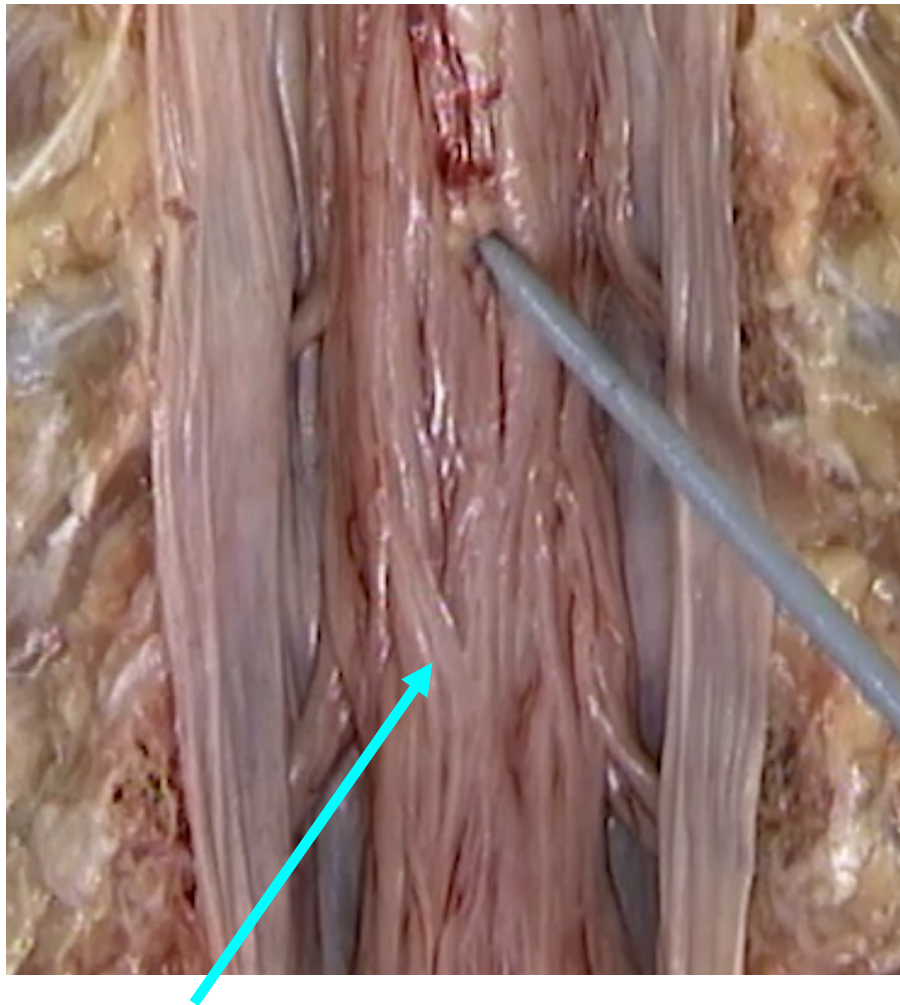
5. Which of the following is a symptom/sign that occurs in Parkinson's disease?

- a. hemianopia
- b. paralysis on one side of the body
- c. drooping eyelid (ptosis)
- d. **bradykinesia**



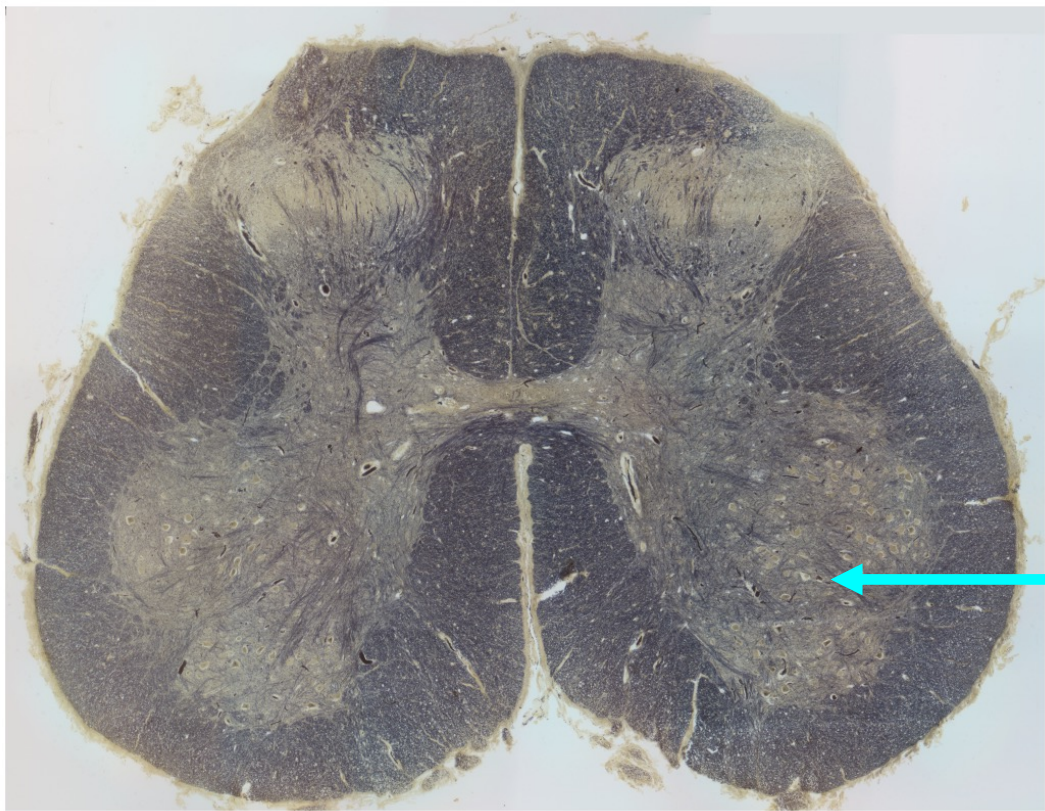
6. Name the structure indicated by the arrow.

ventral root



7. The gray probe points to the place where spinal cord tissue ends.
Name the structure indicated by the bright blue arrow.

cauda equina



8. What type of neuron has its cell body in the location indicated by the arrow?

- a. upper motor neuron
- b. somatic motor neuron**
- c. sympathetic preganglionic neuron
- d. sympathetic postganglionic neuron
- e. afferent neuron

9. Which of the following is the receptor found on the targets of sympathetic postganglionic neurons?

- a. **adrenergic**
- b. nicotinic
- c. muscarinic

10. What kind of protein is a muscarinic receptor?
- a. ligand-gated ion channel
 - b. leak channel
 - c. **G protein coupled receptor (GPCR)**
 - d. nuclear receptor