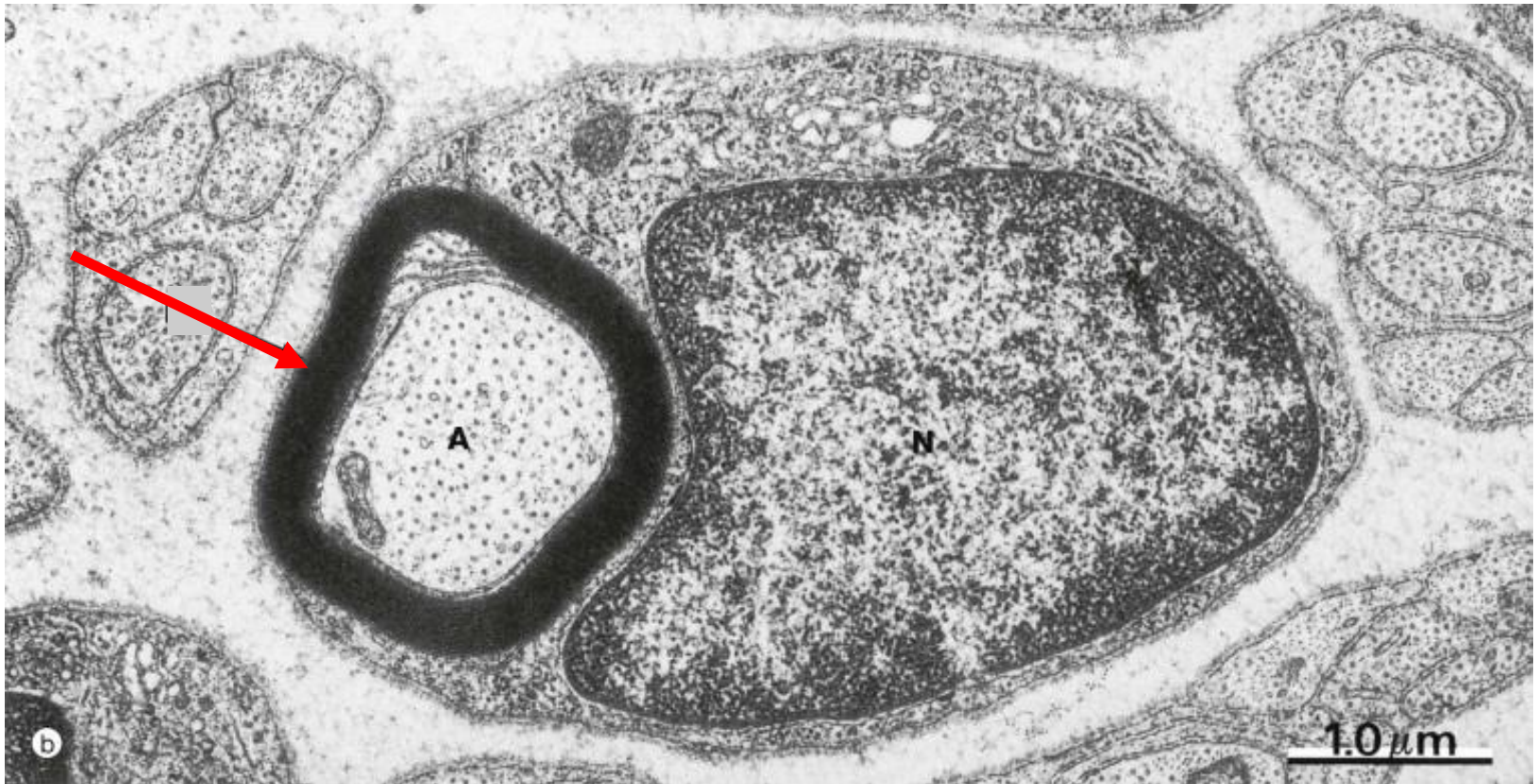
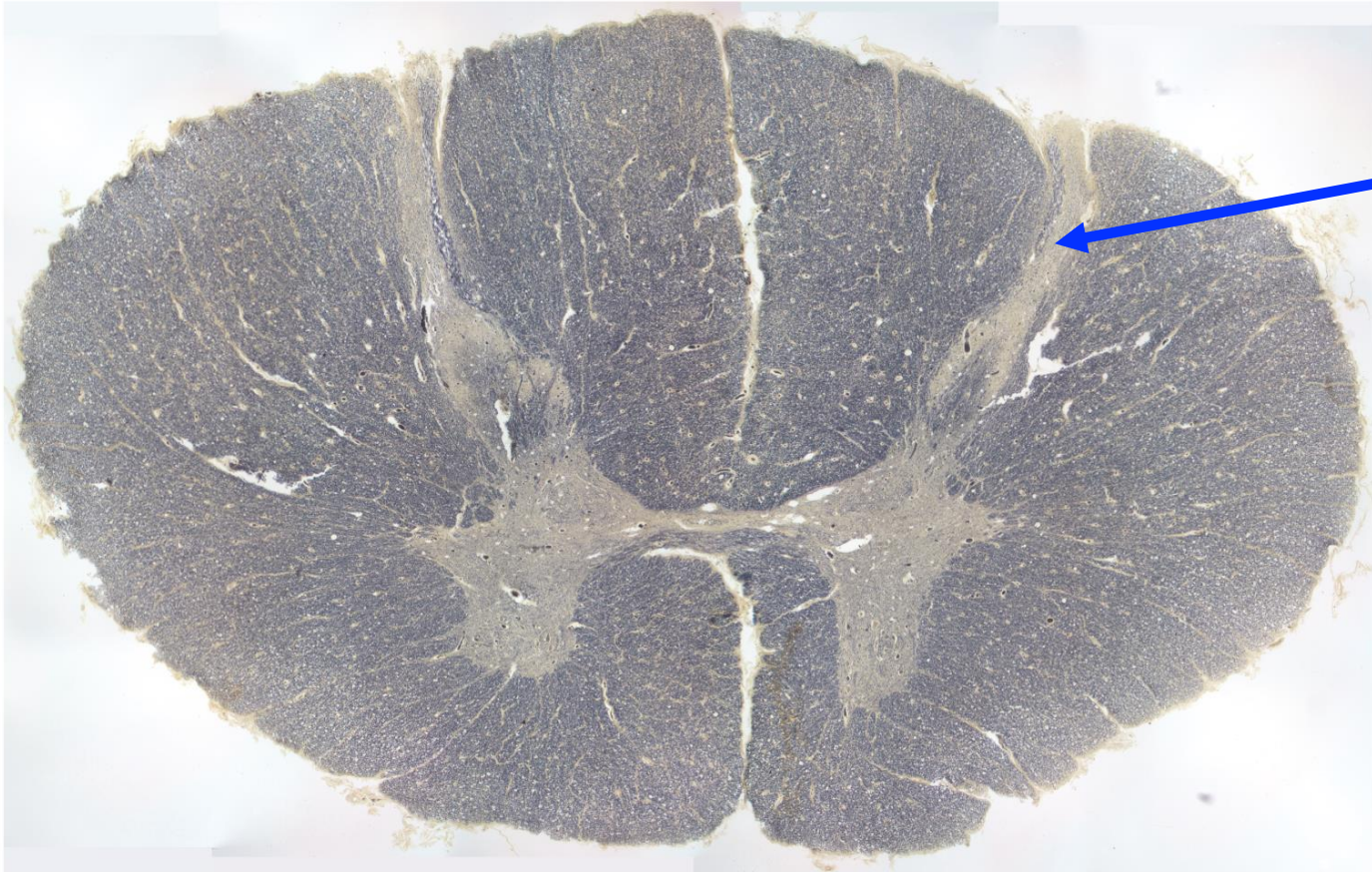


Quiz Section Test 2-AA
Answers are given in red.



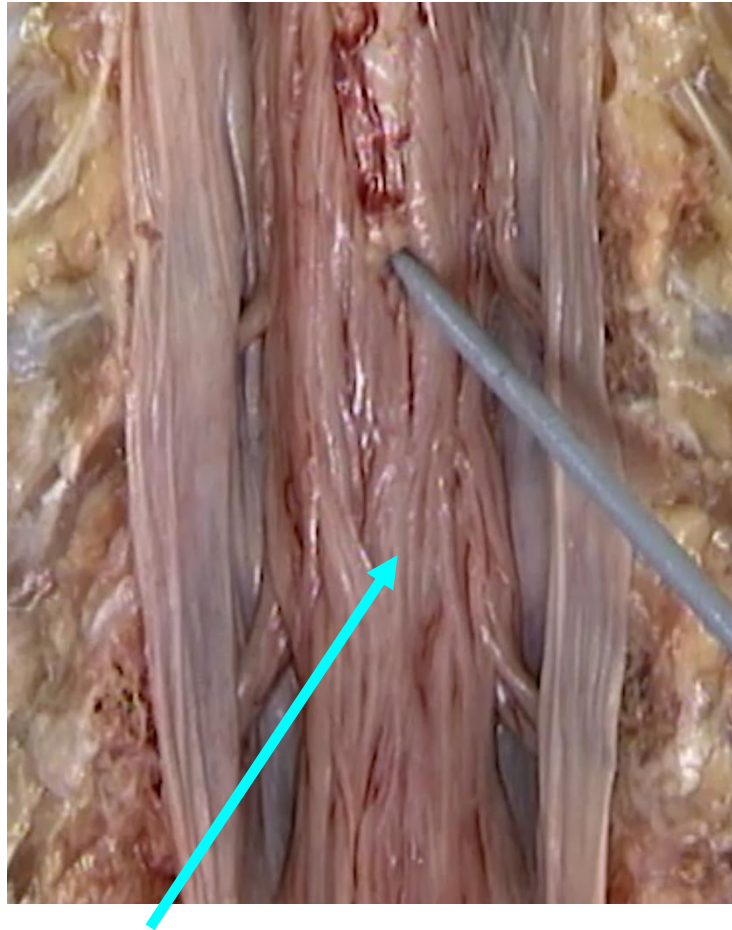
1. Name the structure indicated by the arrow.

myelin

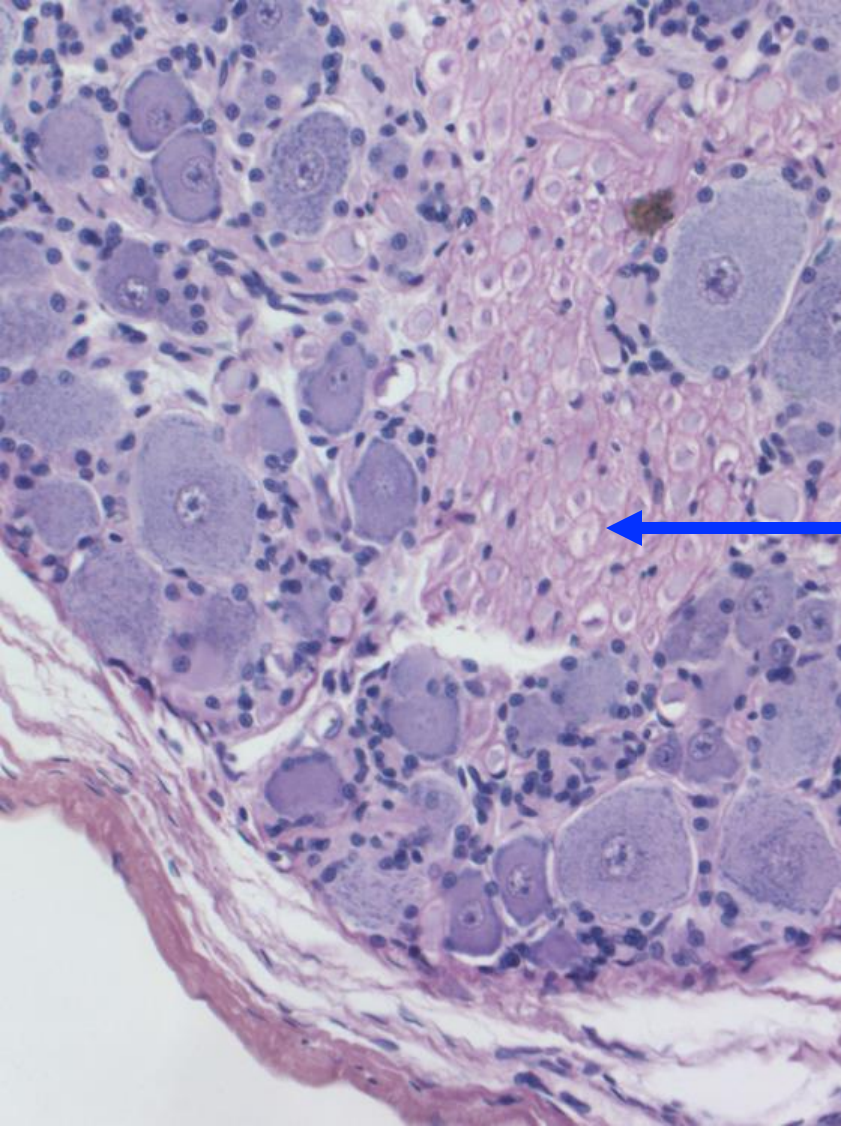


2. Name the specific region of gray matter indicated by the arrow.

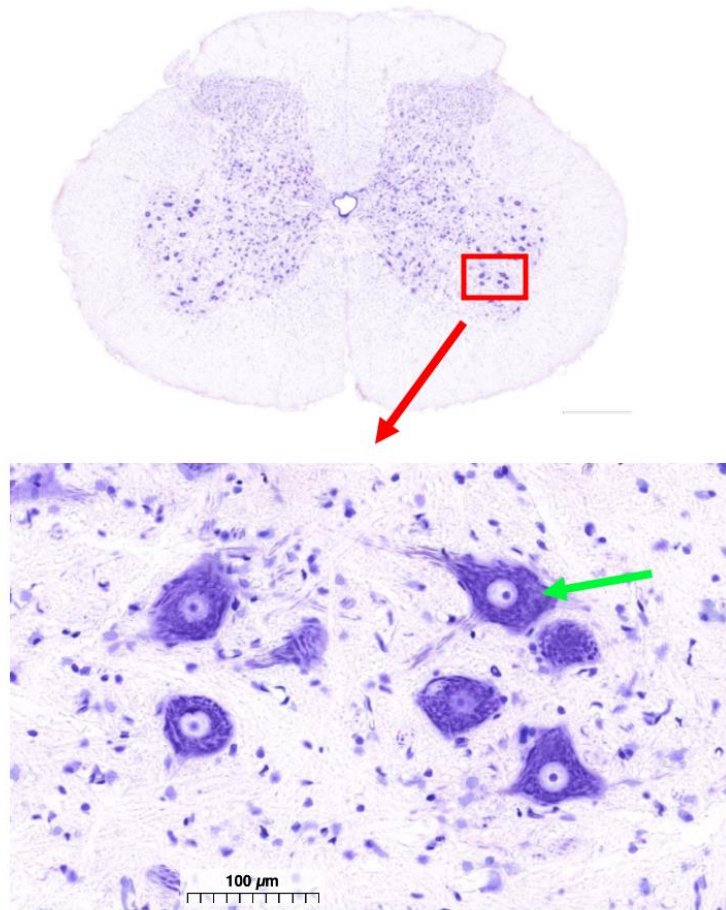
dorsal horn



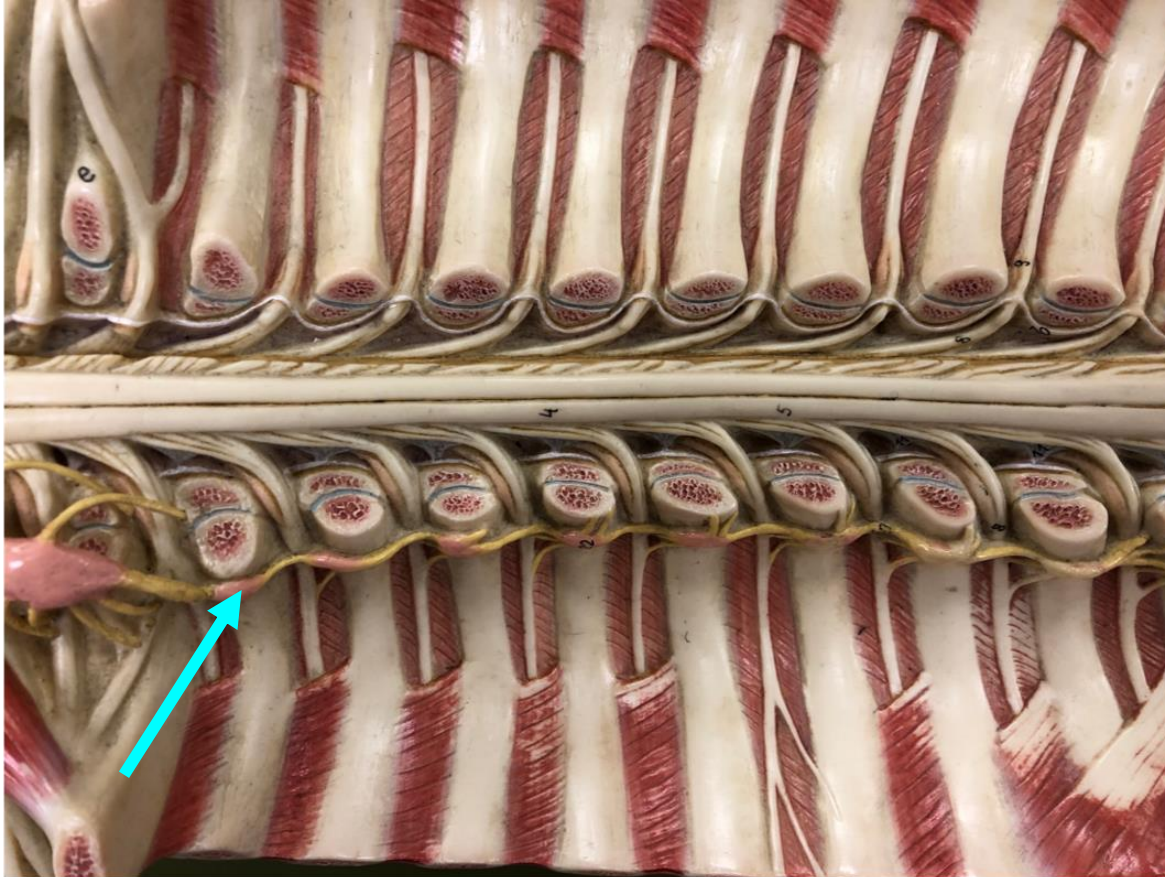
3. The gray probe points to the place where spinal cord tissue ends. What is found in the region indicated by the bright blue arrow?
- a. spinal nerves
 - b. dura mater
 - c. dorsal root ganglia
 - d. connective tissue
 - e. **dorsal and ventral roots**



4. What is shown by the arrow?
- a. nucleolus
 - b. afferent neuron cell body
 - c. axons of the dorsal root
 - d. axons of the ventral root

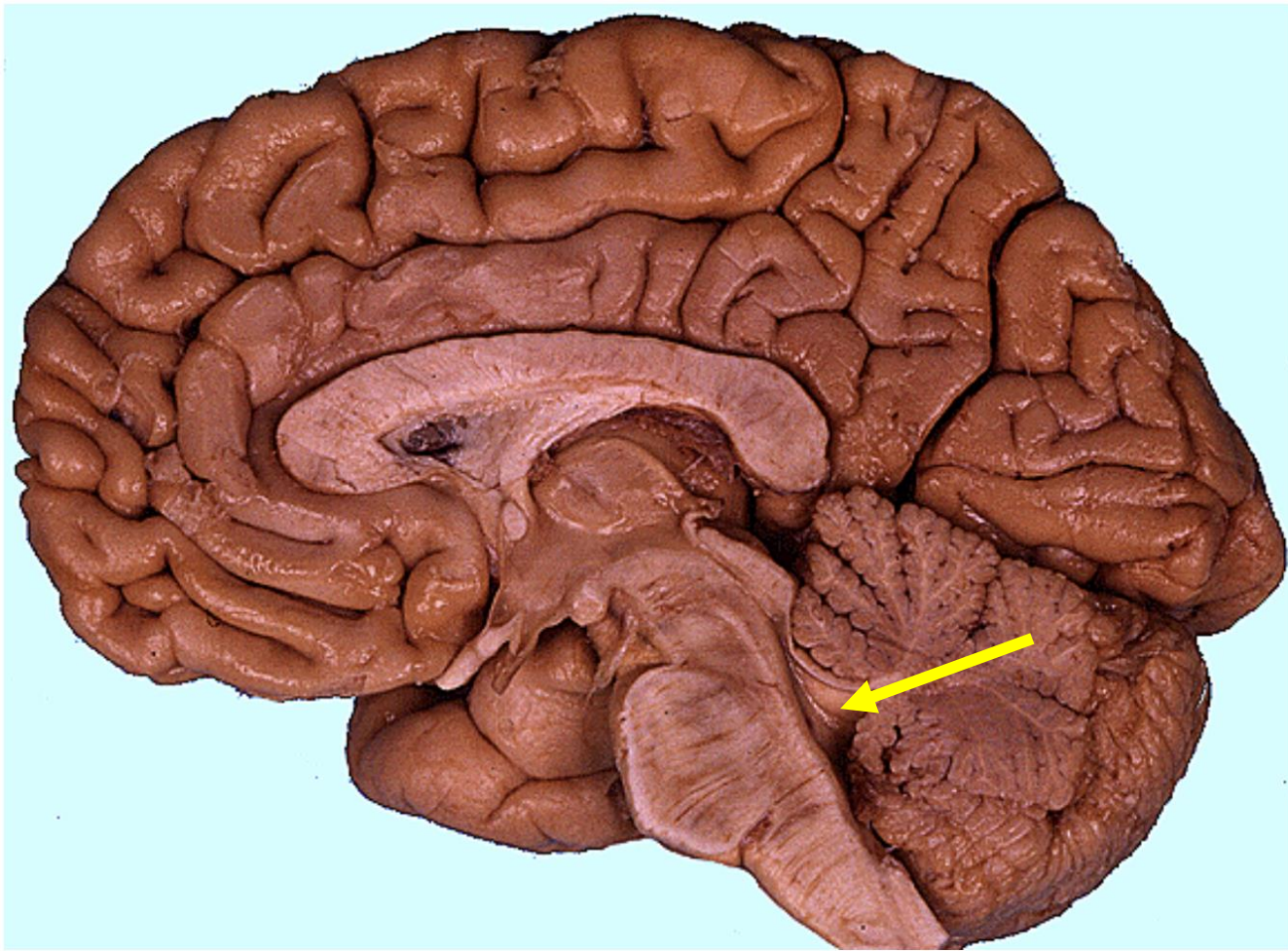


5. Which of the following cells is indicated by the green arrow?
- a. upper motor neuron
 - b. afferent neuron
 - c. sympathetic preganglionic neuron
 - d. sympathetic postganglionic neuron
 - e. **somatic motor neuron**



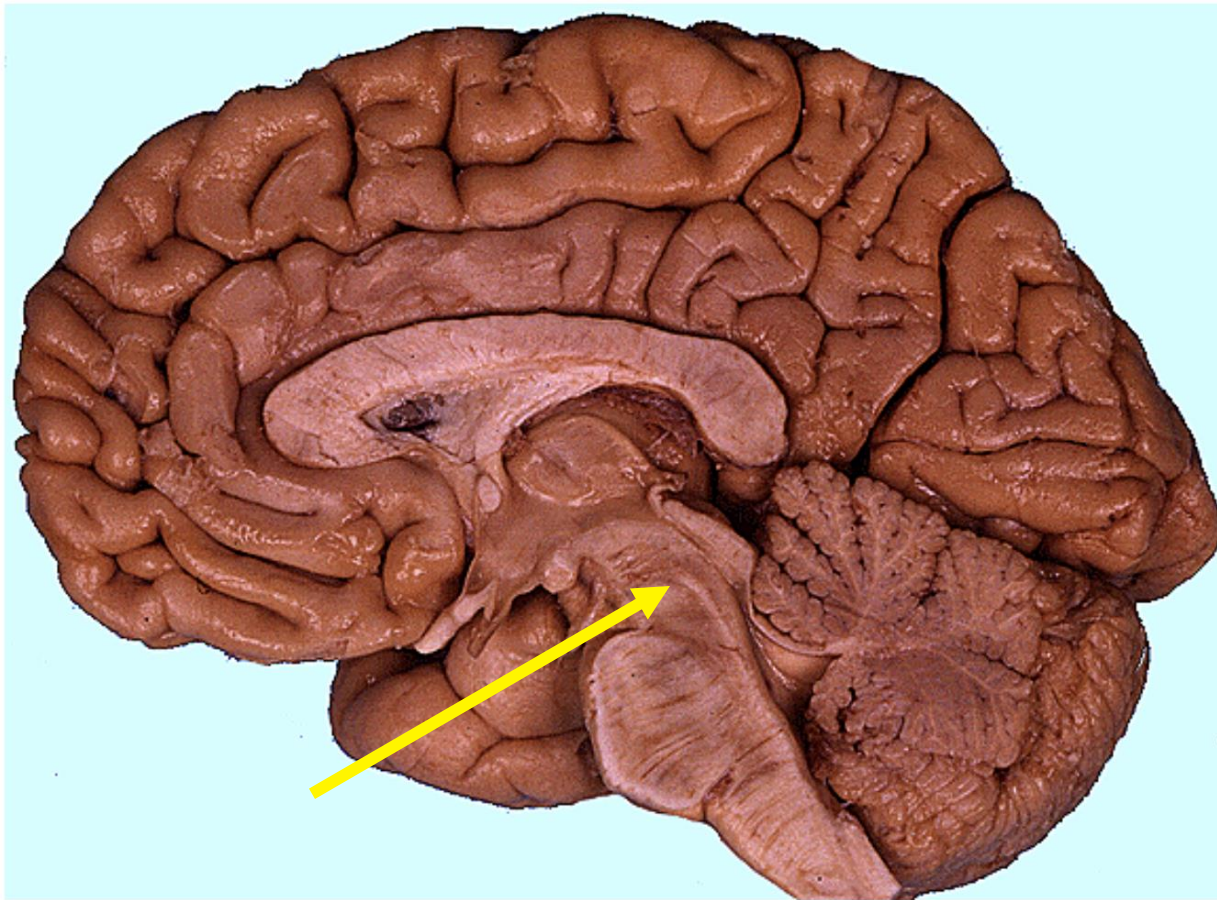
6. What type of neuron cell body is found in the location indicated by the arrow?

- a. parasympathetic preganglionic neuron
- b. sympathetic preganglionic neuron
- c. parasympathetic postganglionic neuron
- d. **sympathetic postganglionic neuron**
- e. somatic motor neuron



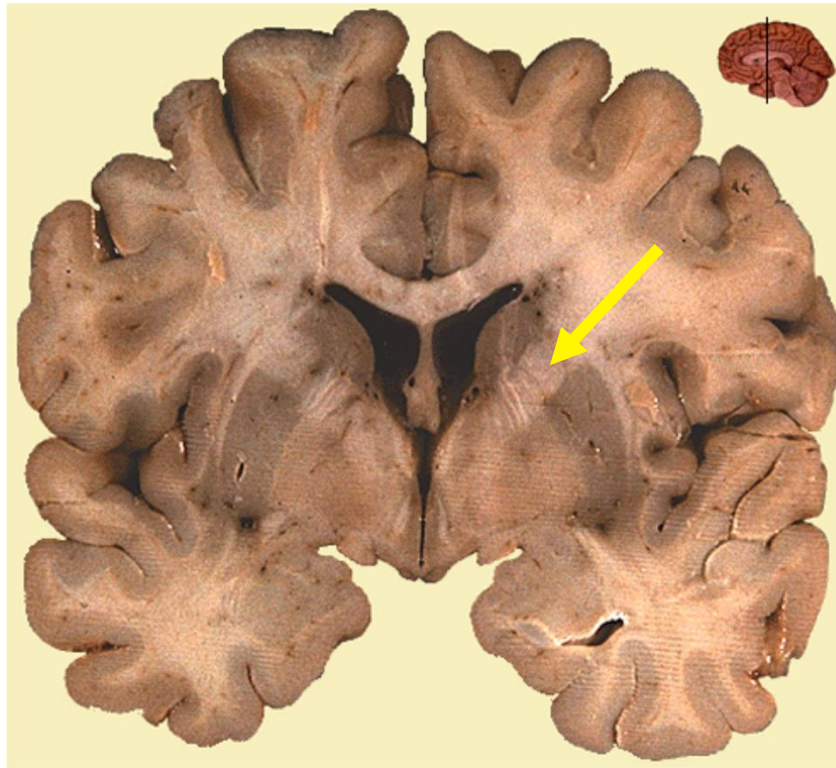
7. Name the space indicated by the arrow.

fourth ventricle



8. Which of the following is the structure indicated by the arrow?

- a. **midbrain**
- b. cerebellum
- c. medulla oblongata
- d. corpus callosum
- e. precentral sulcus



9. Which of the following is indicated by the arrow?
- a. midbrain
 - b. corpus callosum
 - c. cerebral cortex
 - d. **internal capsule**
 - e. substantia nigra

10. Which of the following is a symptom/sign that might occur if there was damage to the left motor cortex?

- a. weakness of the limbs on the left side of the body
- b. resting tremor
- c. bradykinesia
- d. hemianopia
- e. **weakness of the limbs on the right side of the body**