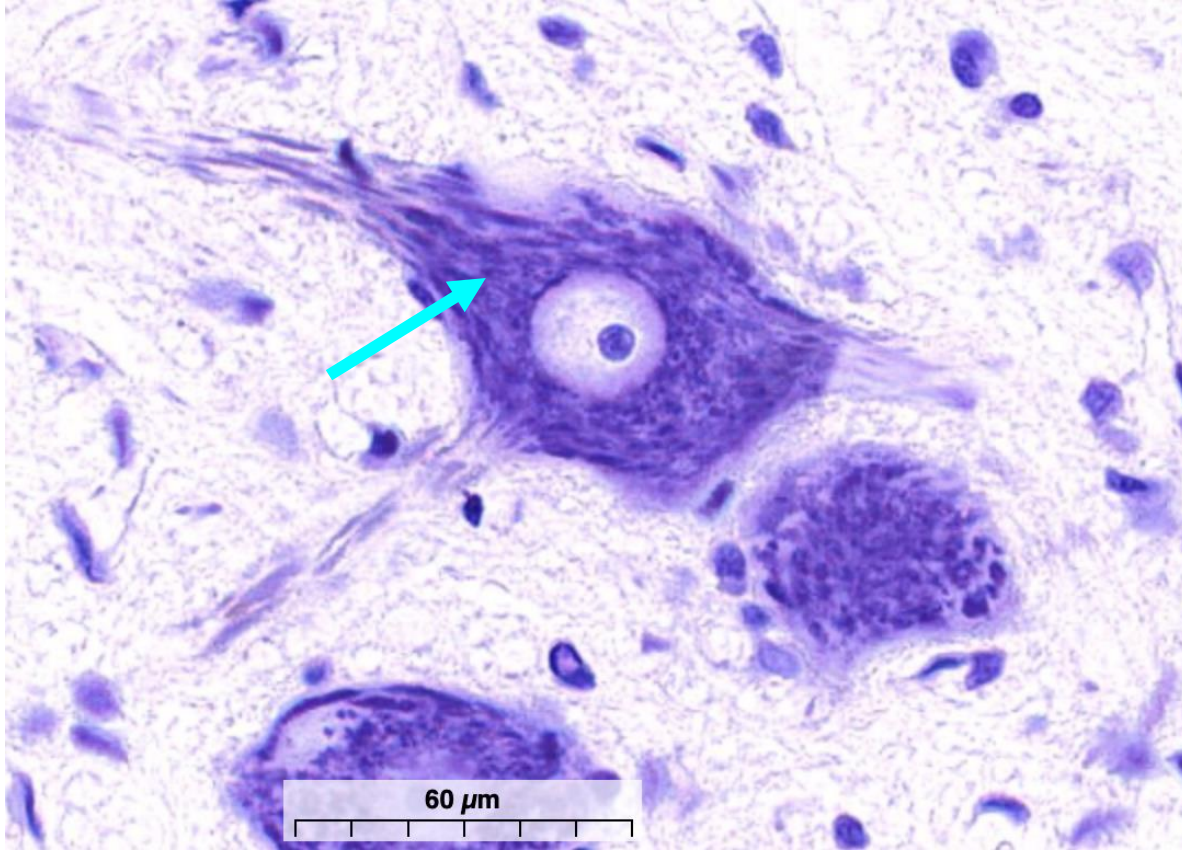
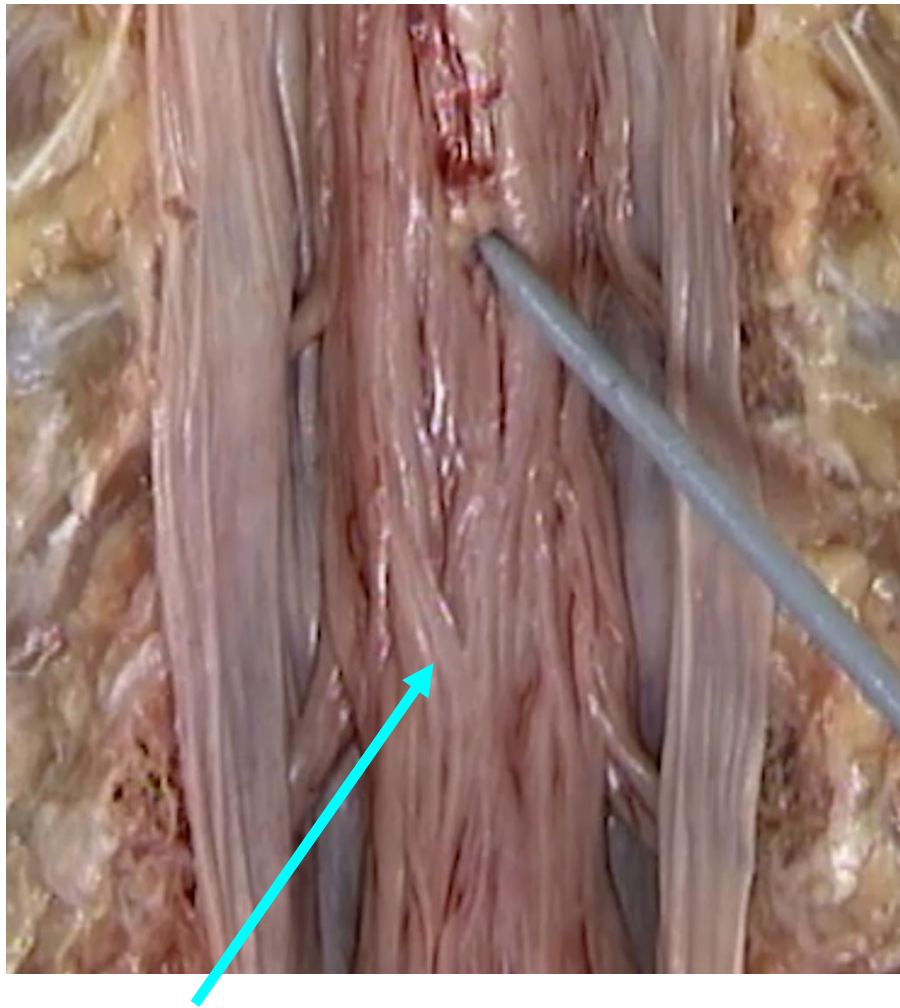


Quiz Section Test 2-AB
Answers are given in red.

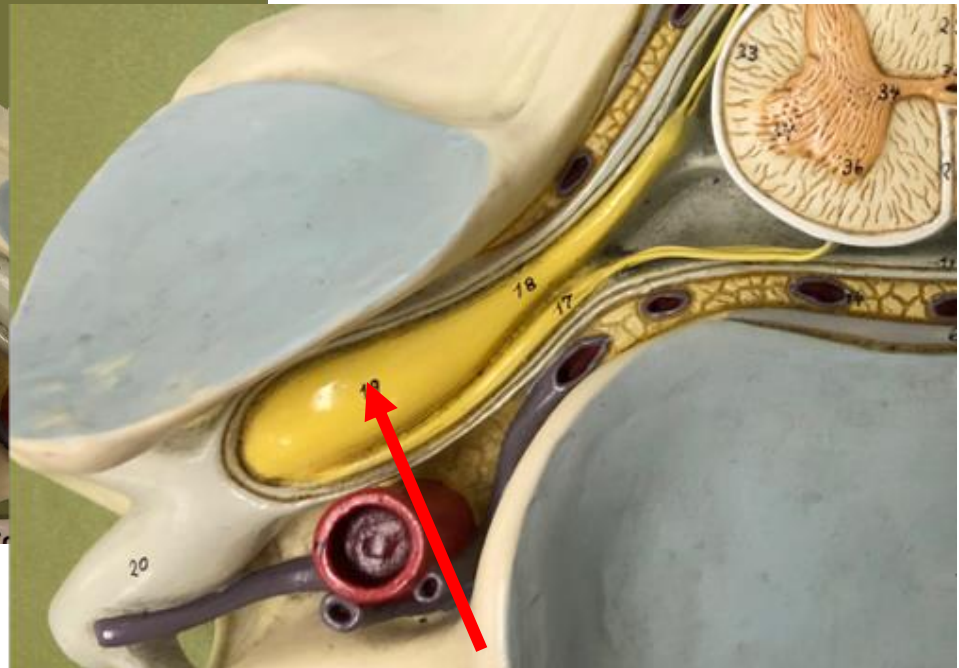
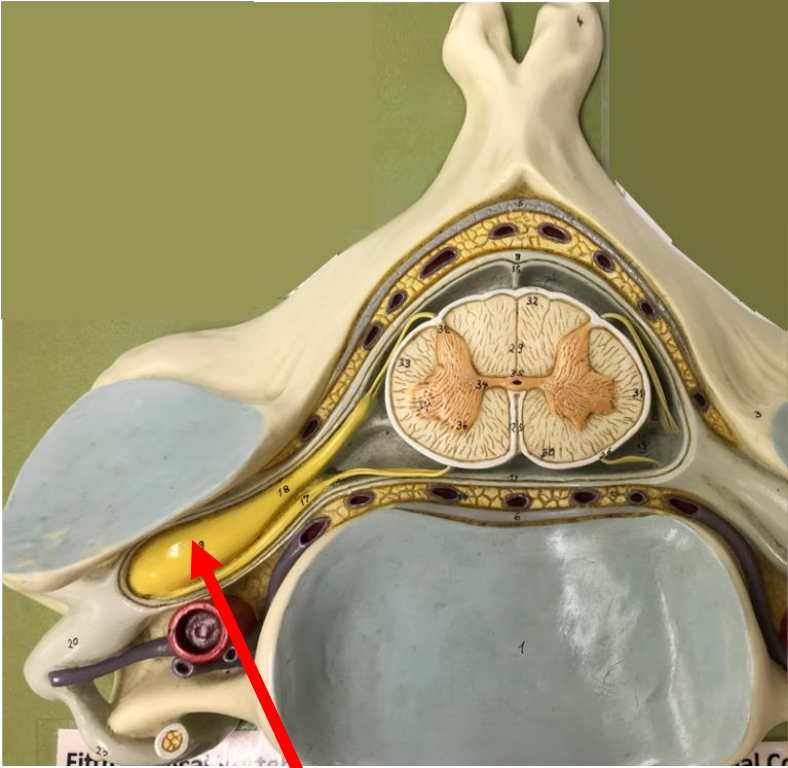


1. Which of the following is indicated by the arrow?
 - a. rough ER
 - b. microtubule
 - c. nucleus
 - d. nucleolus
 - e. dendrite



2. The gray probe points to the place where spinal cord tissue ends.
Name the structure indicated by the bright blue arrow.

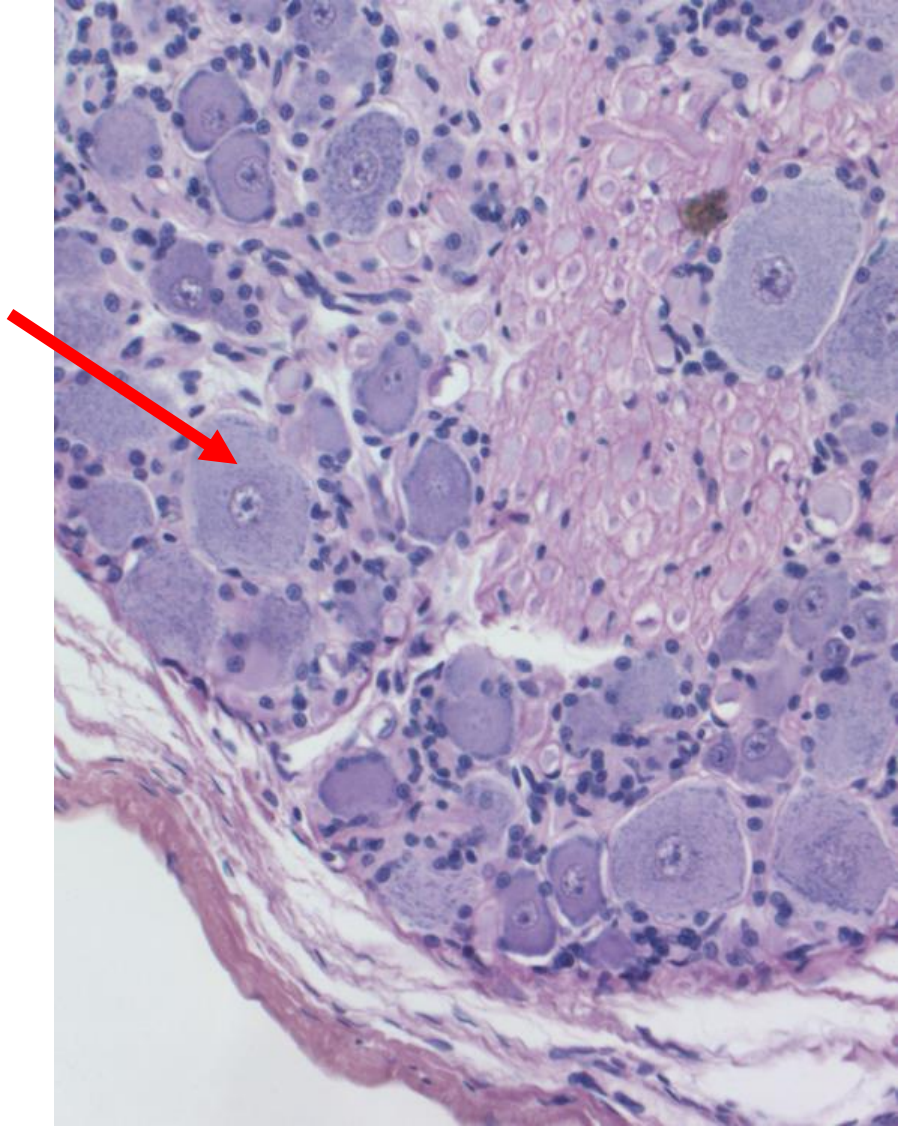
cauda equina



3. Name the structure indicated by the arrow.

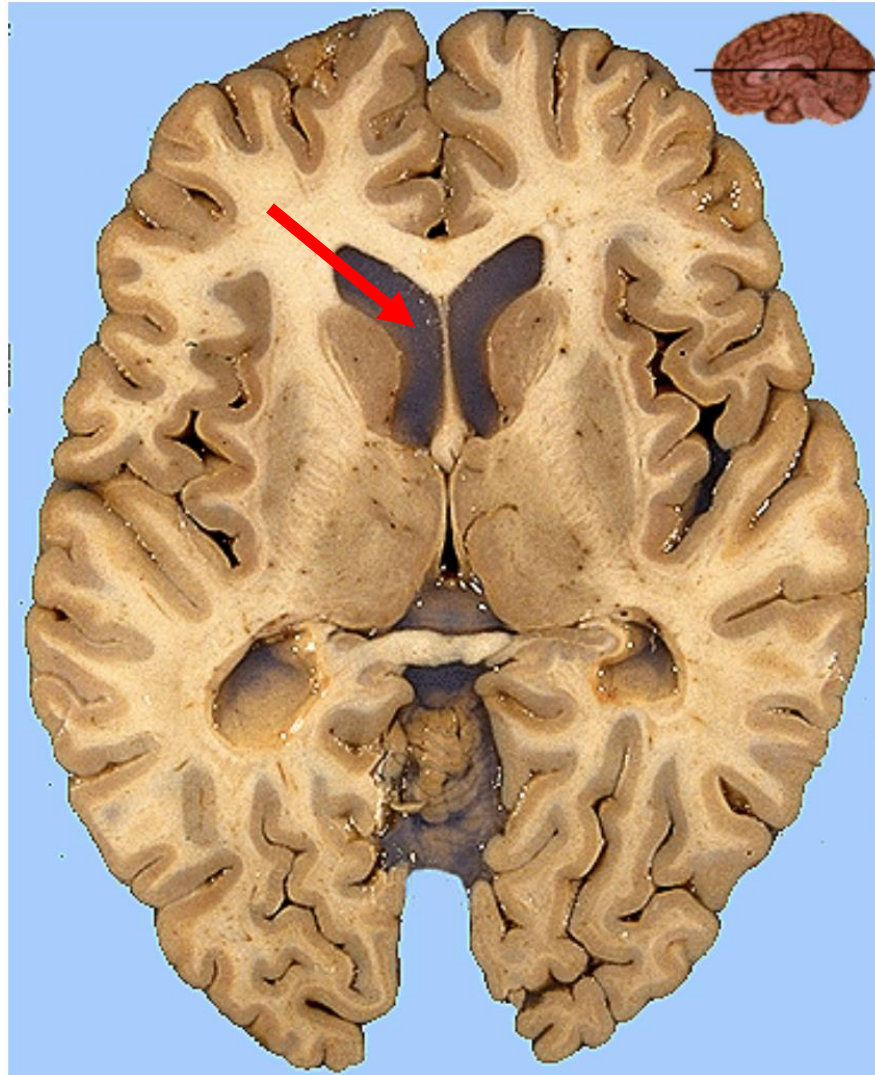
dorsal root ganglion

4. Which of the following is NOT an efferent neuron?
- a. a neuron that sends a signal to activate a muscle cell
 - b. a parasympathetic neuron
 - c. a somatic motor neuron
 - d. a neuron that alters the heart rate
 - e. a neuron that senses touch in the finger



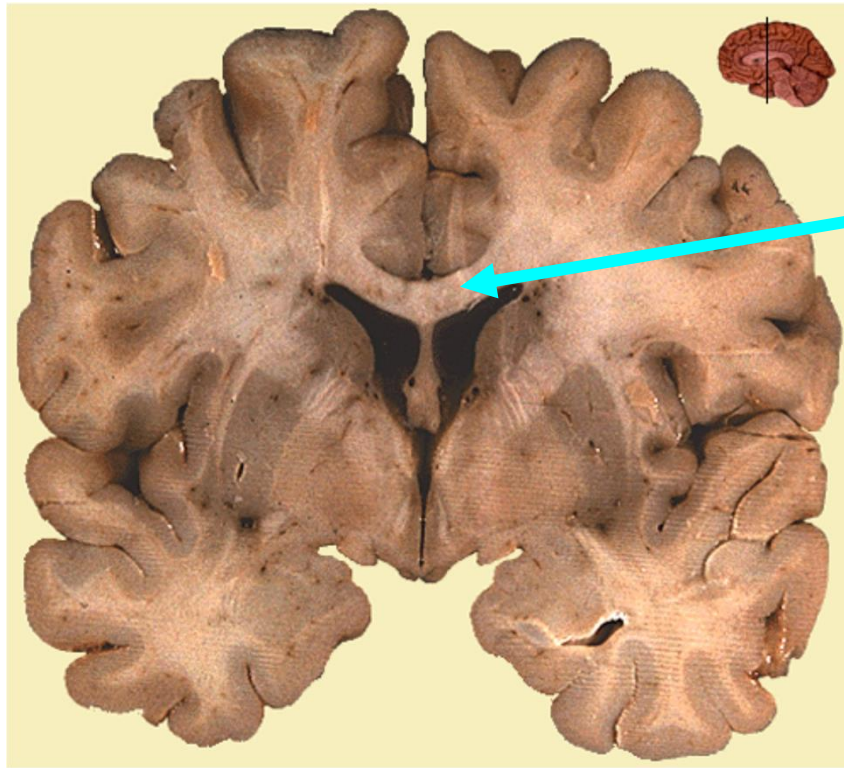
5. Which of the following cells is indicated by the arrow?
- a. afferent neuron
 - b. somatic motor neuron
 - c. parasympathetic preganglionic neuron
 - d. sympathetic postganglionic neuron
 - e. parasympathetic postganglionic neuron

6. What kind of protein is a muscarinic receptor?
- a. ligand-gated ion channel
 - b. leak channel
 - c. **G protein coupled receptor (GPCR)**
 - d. nuclear receptor

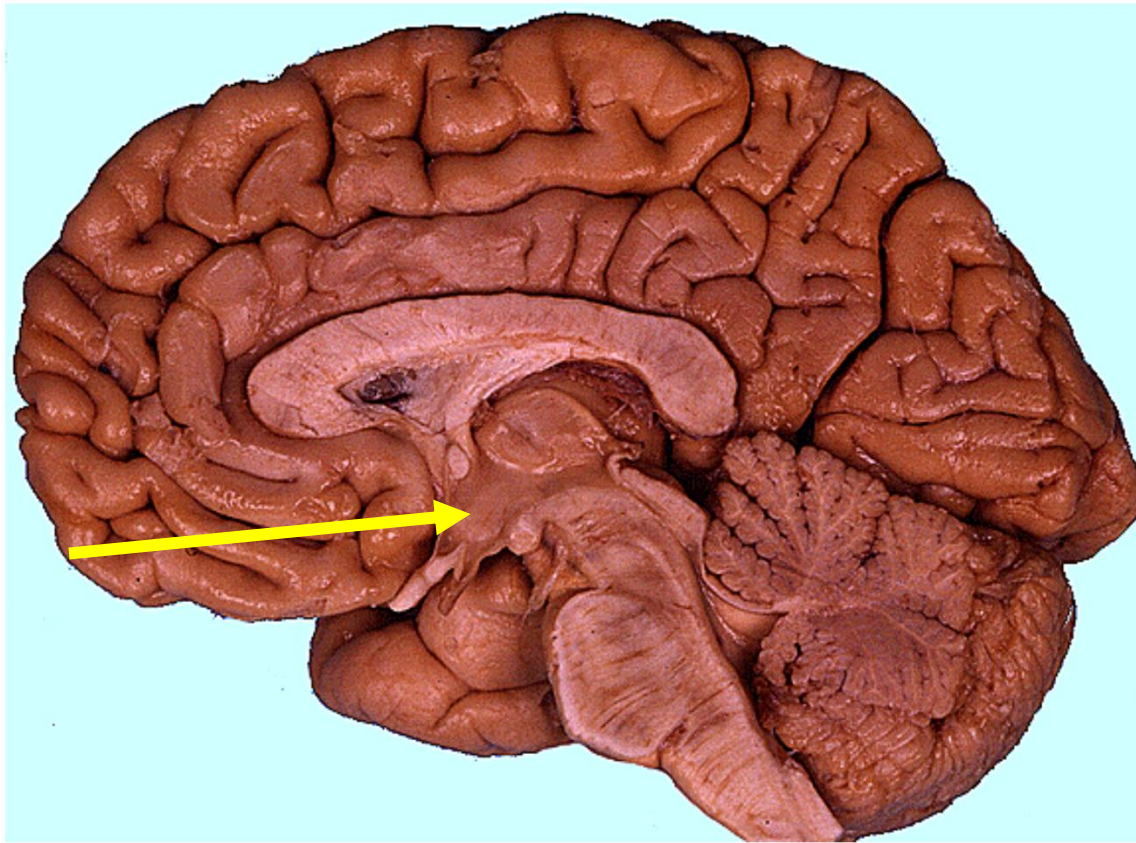


7. Name the space indicated by the arrow.

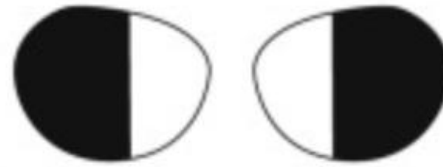
lateral ventricle



8. Which of the following is indicated by the arrow?
- a. thalamus
 - b. corpus callosum**
 - c. cerebral cortex
 - d. basal ganglia
 - e. substantia nigra



9. Which of the following is the structure indicated by the arrow?
- a. midbrain
 - b. thalamus
 - c. **hypothalamus**
 - d. corpus callosum
 - e. medulla oblongata



C. Bitemporal hemianopia

10. What kind of lesion will cause this type of visual field disturbance?
- a. lesion in the optic nerve
 - b. lesion in the optic chiasm**
 - c. lesion in the optic tract