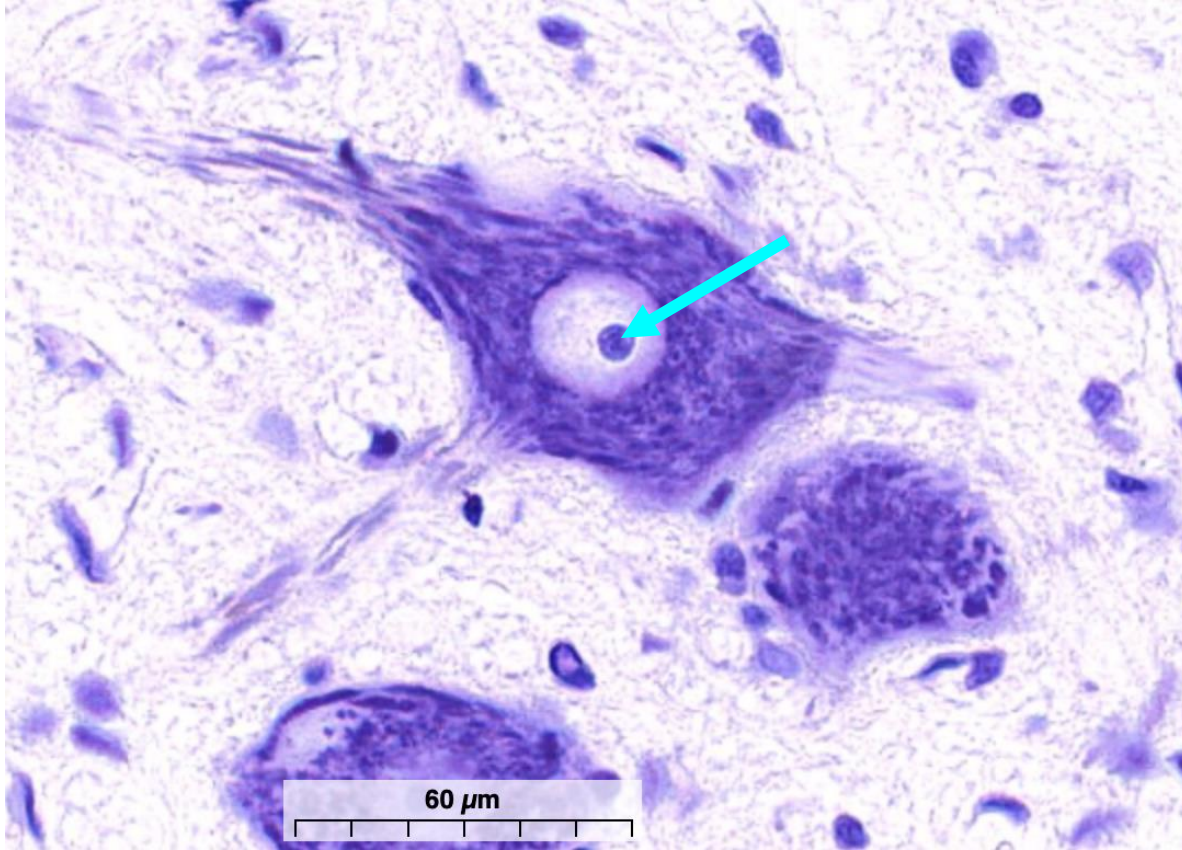


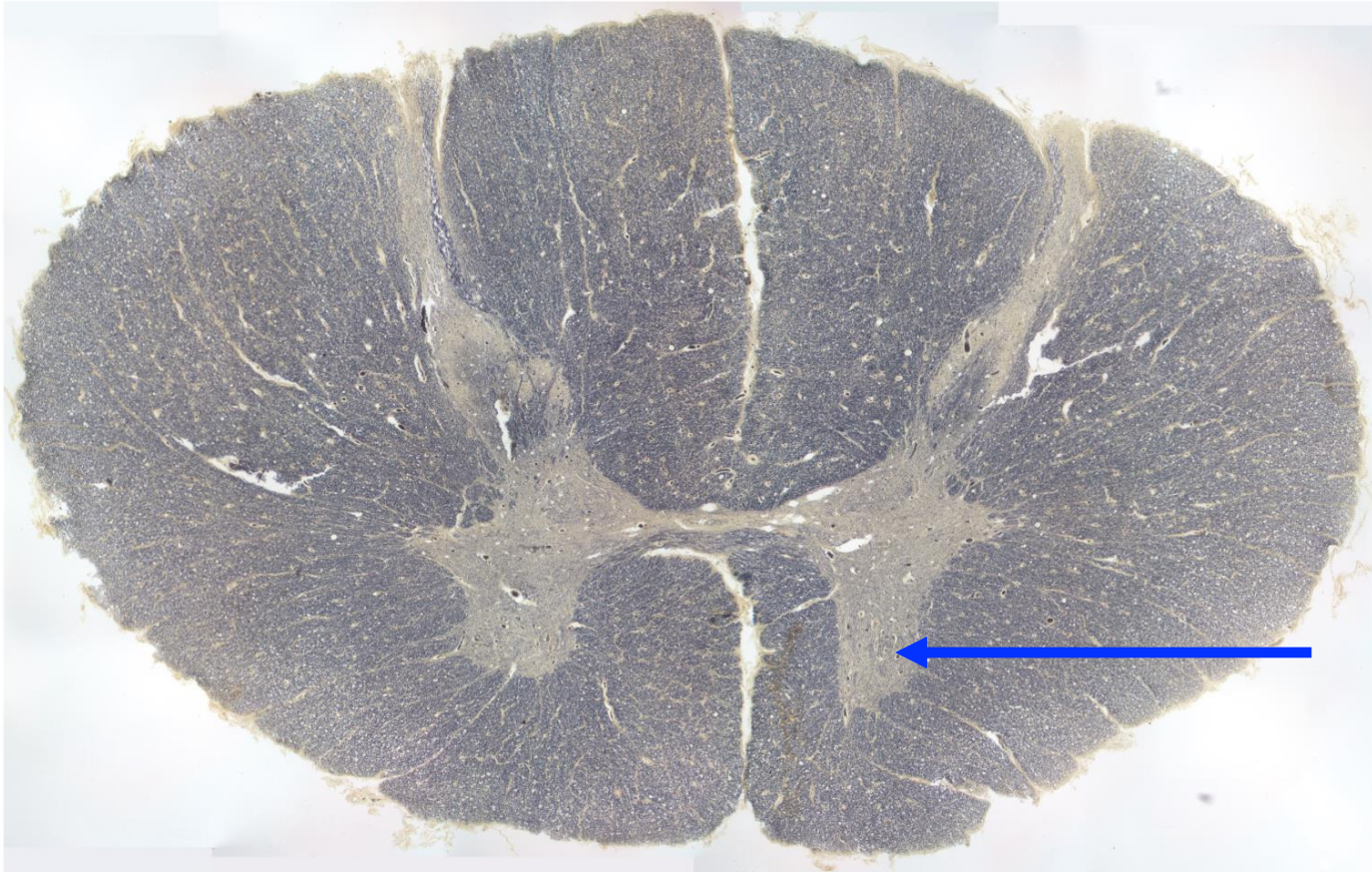
**Quiz Section Test 2-AC**  
**Answers are given in red.**



1. Which of the following is indicated by the arrow?
  - a. rough ER
  - b. microtubule
  - c. synaptic vesicle
  - d. nucleolus
  - e. dendrite

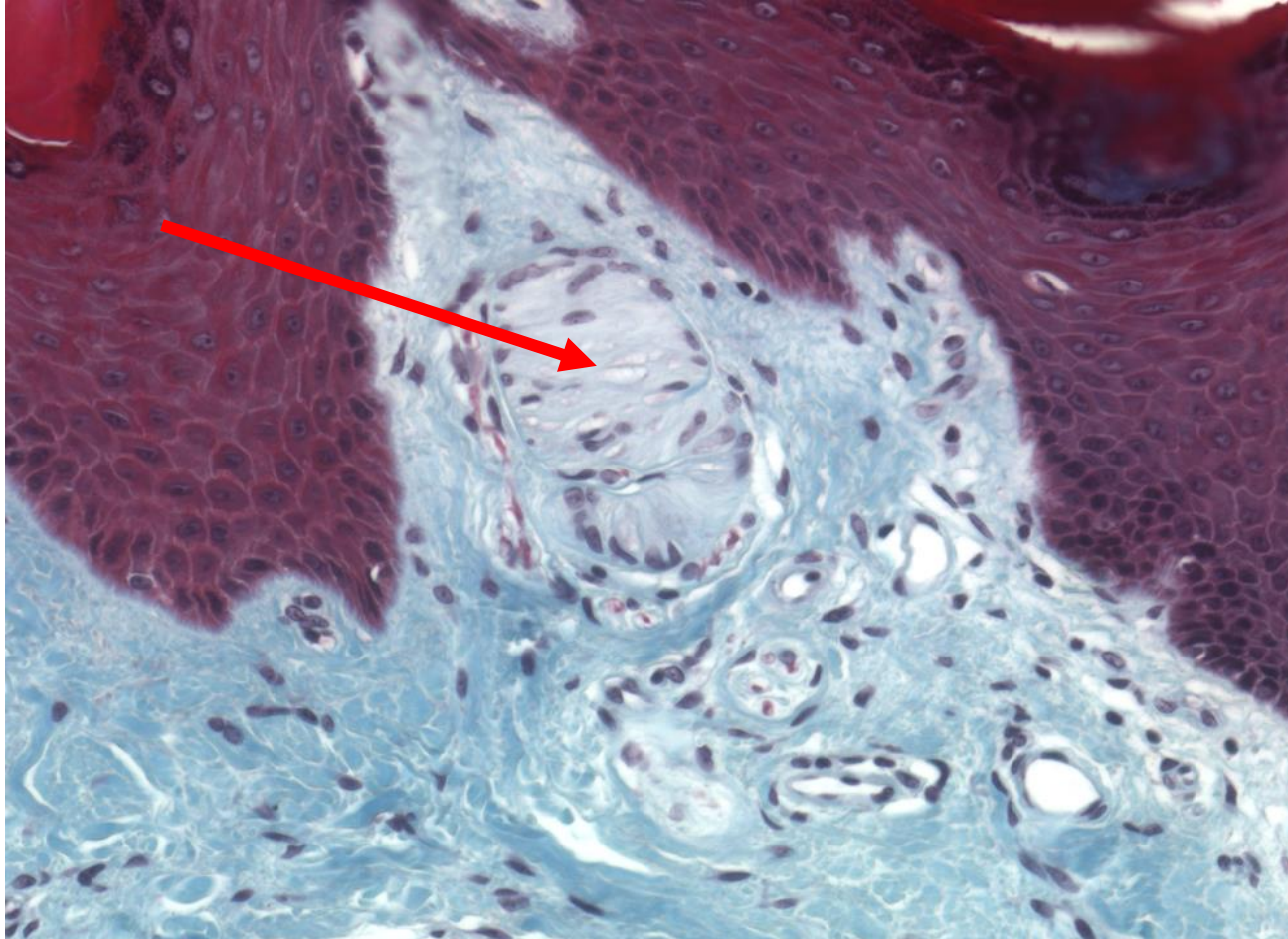


2. Which of the following is shown by the arrow?
- a. **spinal nerve**
  - b. **ventral root**
  - c. **dorsal root**
  - d. **sympathetic chain ganglion**
  - e. **dorsal root ganglion**



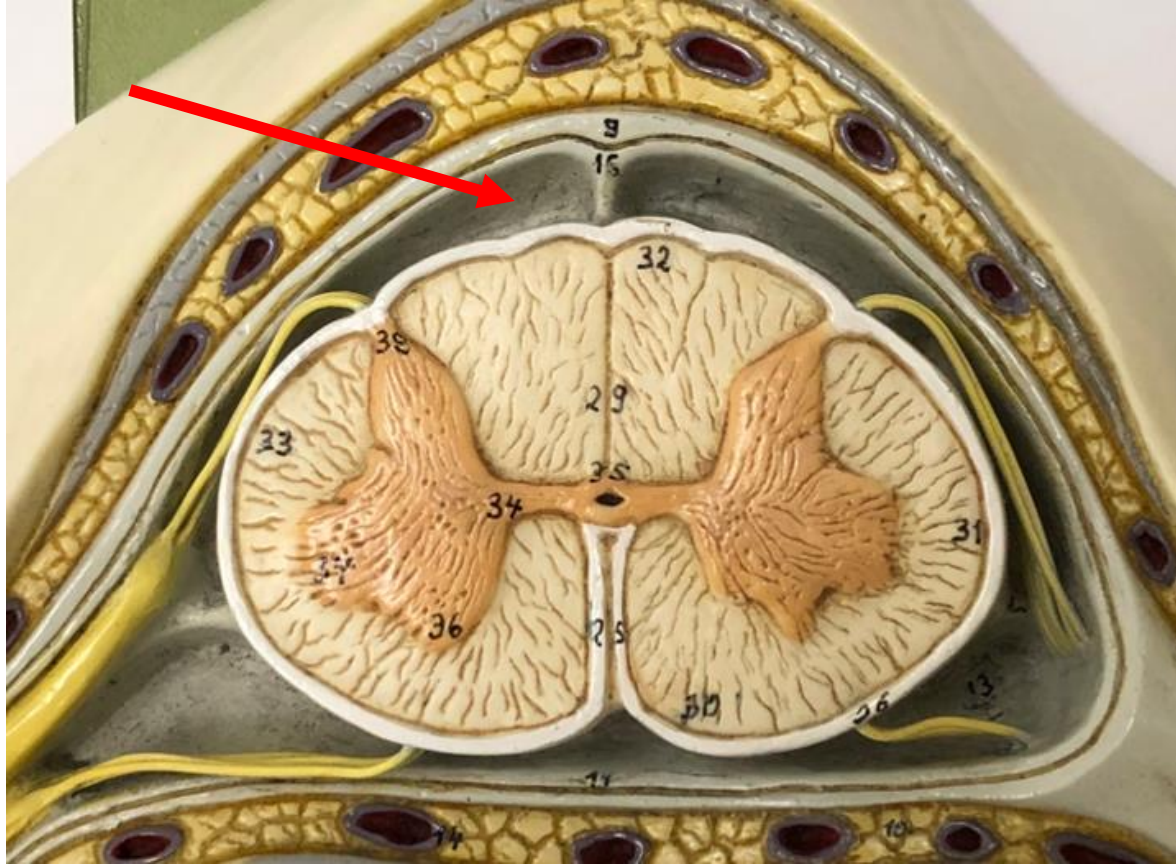
3. Name the specific region of gray matter indicated by the arrow.

**ventral horn**



What part of the afferent neuron is found in the location indicated by the arrow?

- a. axon terminal
- b. cell body
- c. **sensory dendrites**
- d. nodes of Ranvier



5. Which of the following is indicated by the red arrow?

- a. epidural space
- b. longitudinal fissure
- c. subarachnoid space
- d. central canal
- e. central sulcus

6. Where would you find adrenergic receptors?
- a. on the target of a parasympathetic postganglionic neuron
  - b. at the synapses in a sympathetic ganglion
  - c. on a skeletal muscle cell
  - d. on the target of a sympathetic postganglionic neuron**

7. Which of the following is the tough outer layer of the meninges?

a. endothelium

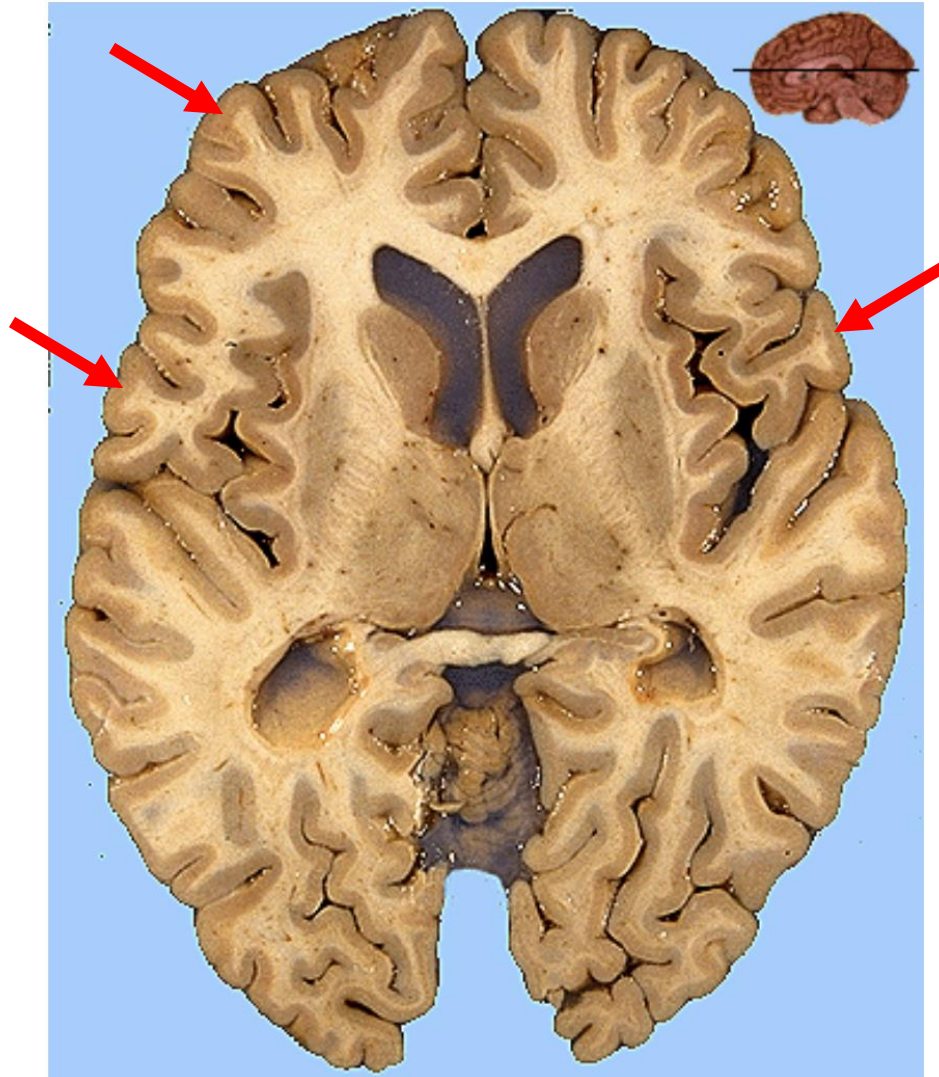
**b. dura mater**

c. choroid plexus

d. pia mater

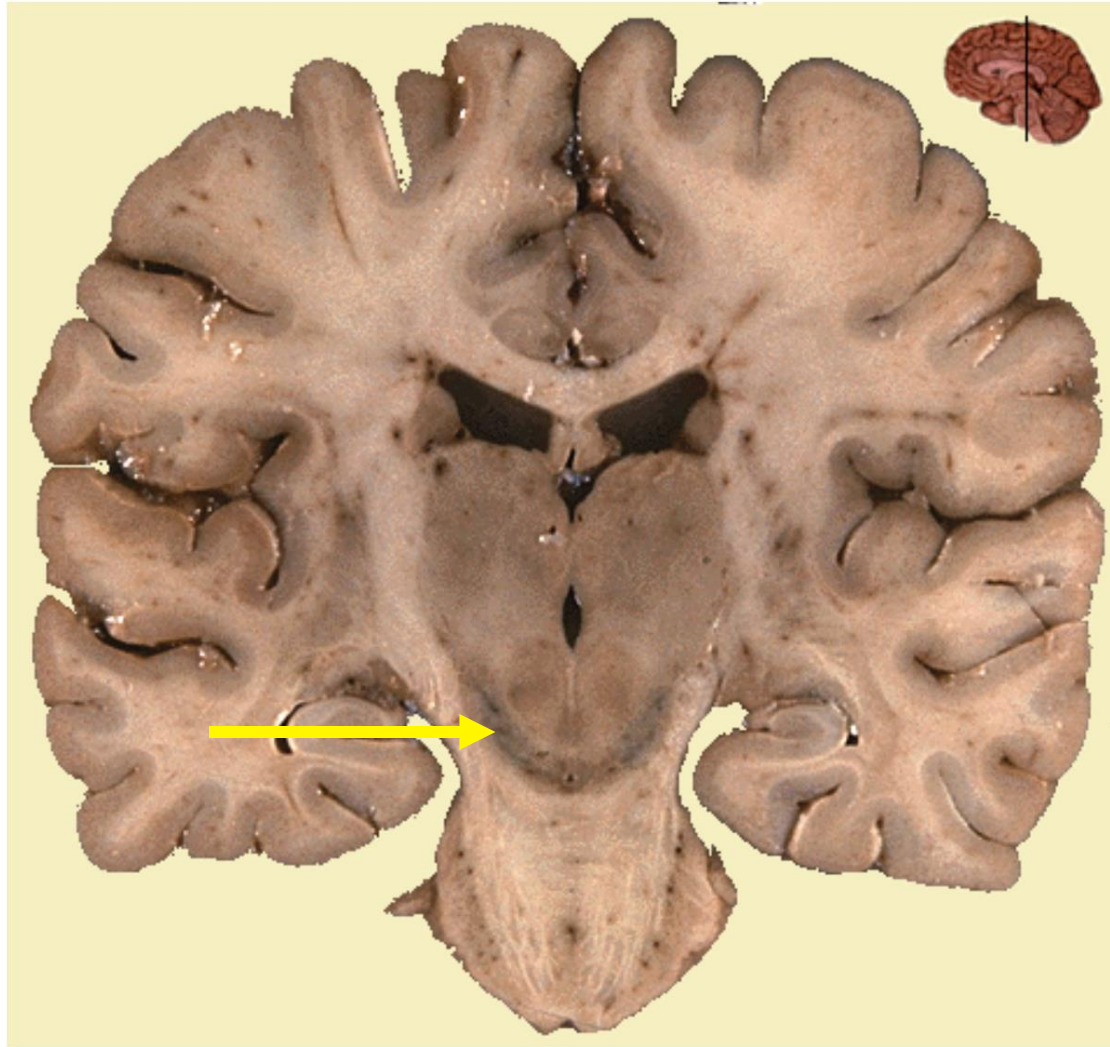
e. cortex





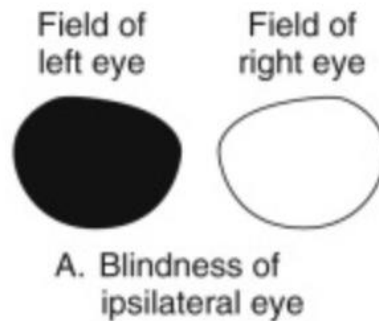
8. Name the term for the grey matter indicated by the arrows.

**cerebral cortex**



9. Name the midbrain nucleus indicated by the arrow.  
This structure degenerates in Parkinson's disease.

**substantia nigra**



10. This type of visual field disturbance would be caused by a lesion in which of the following structures?

- a. **optic nerve**
- b. optic chiasm
- c. optic tract