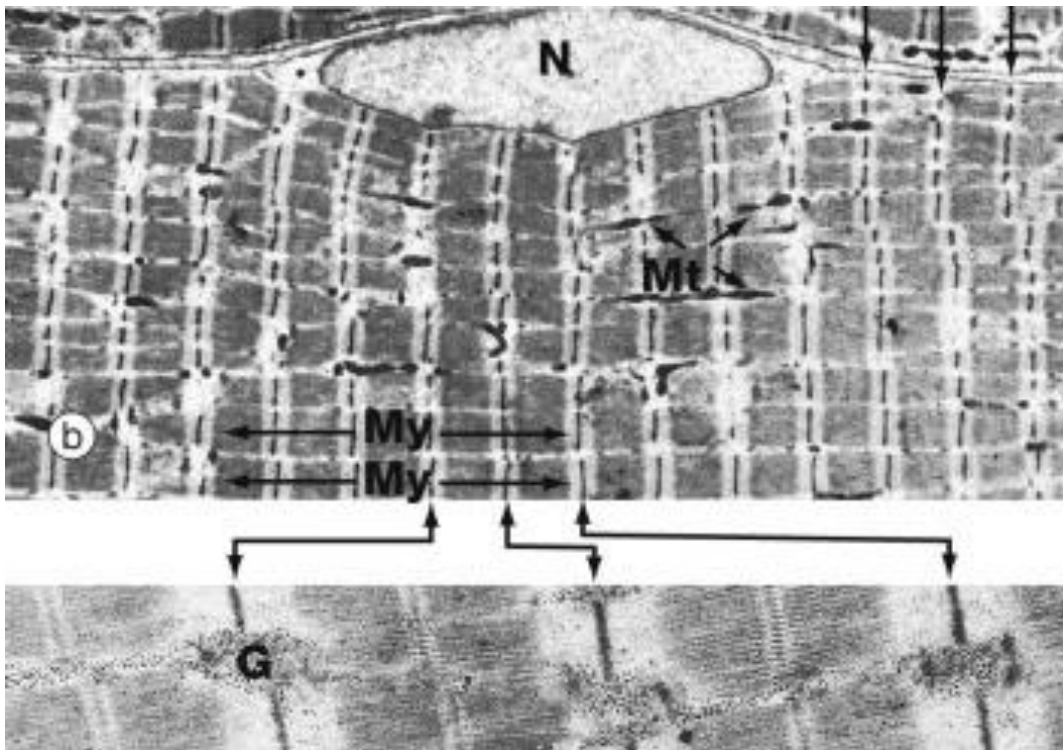
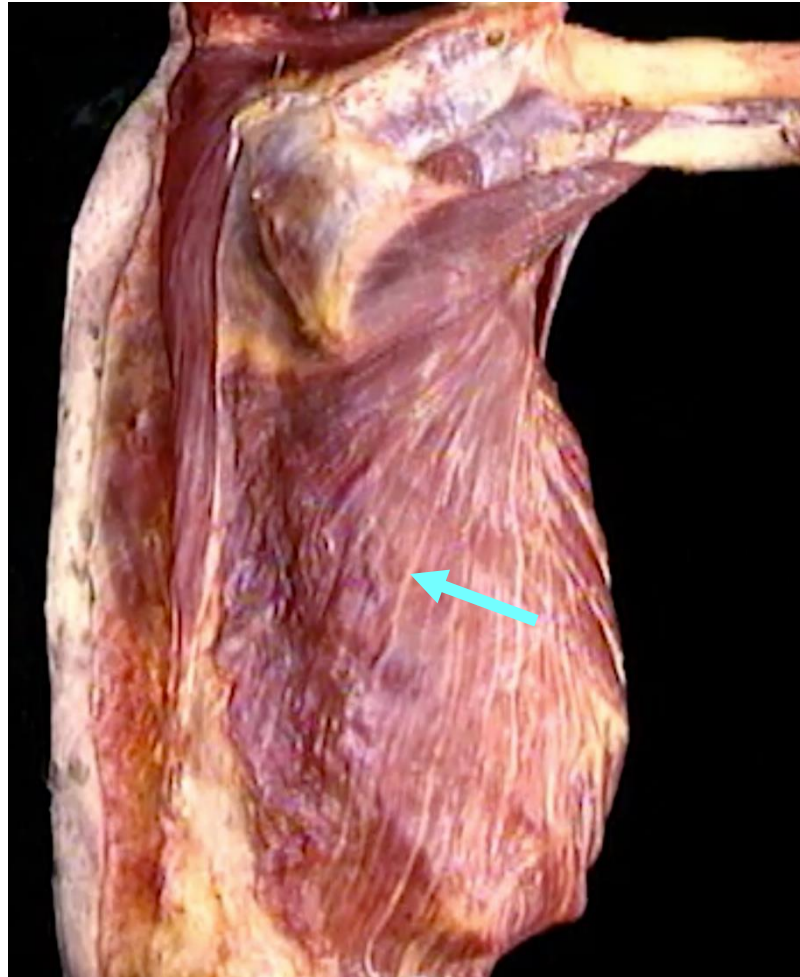


Quiz Section Test 4-AA
Answers are given in red.



1. Which of the following is indicated by the arrow?
 - a. A-band
 - b. T-tubule
 - c. Z-disc
 - d. striation
 - e. myofibril

posterolateral view

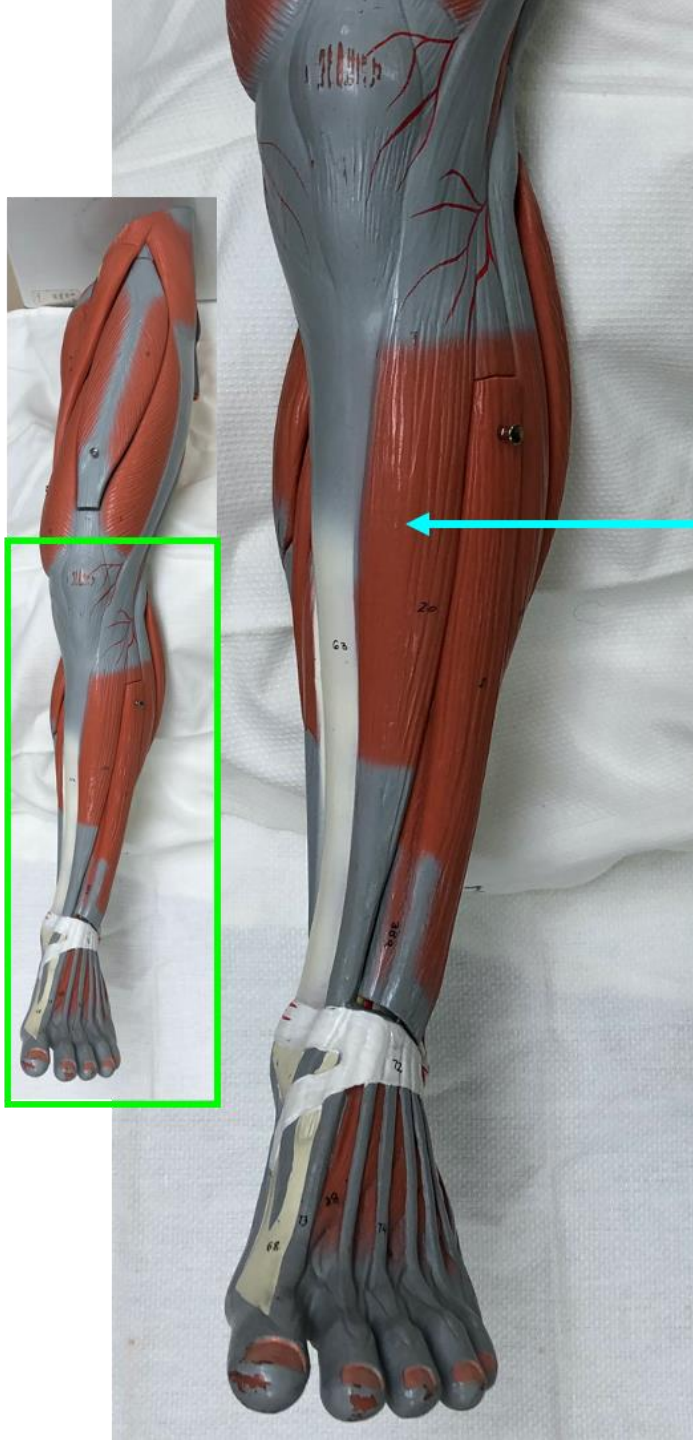


2. Name the muscle indicated by the arrow.

latissimus dorsi



3. What is the action of the muscle indicated by the arrow?
- a. flexion of the wrist
 - b. pronation of the forearm
 - c. extension of the wrist
 - d. extension of the forearm
 - e. flexion of the forearm



4. Name the muscle indicated by the arrow.

tibialis anterior

5. Which of the following usually causes the stretch reflex to be weak or absent?

- a. upper motor neuron disorder
- b. damage to the reflex arc**
- c. clonus
- d. use of a muscarinic antagonist drug