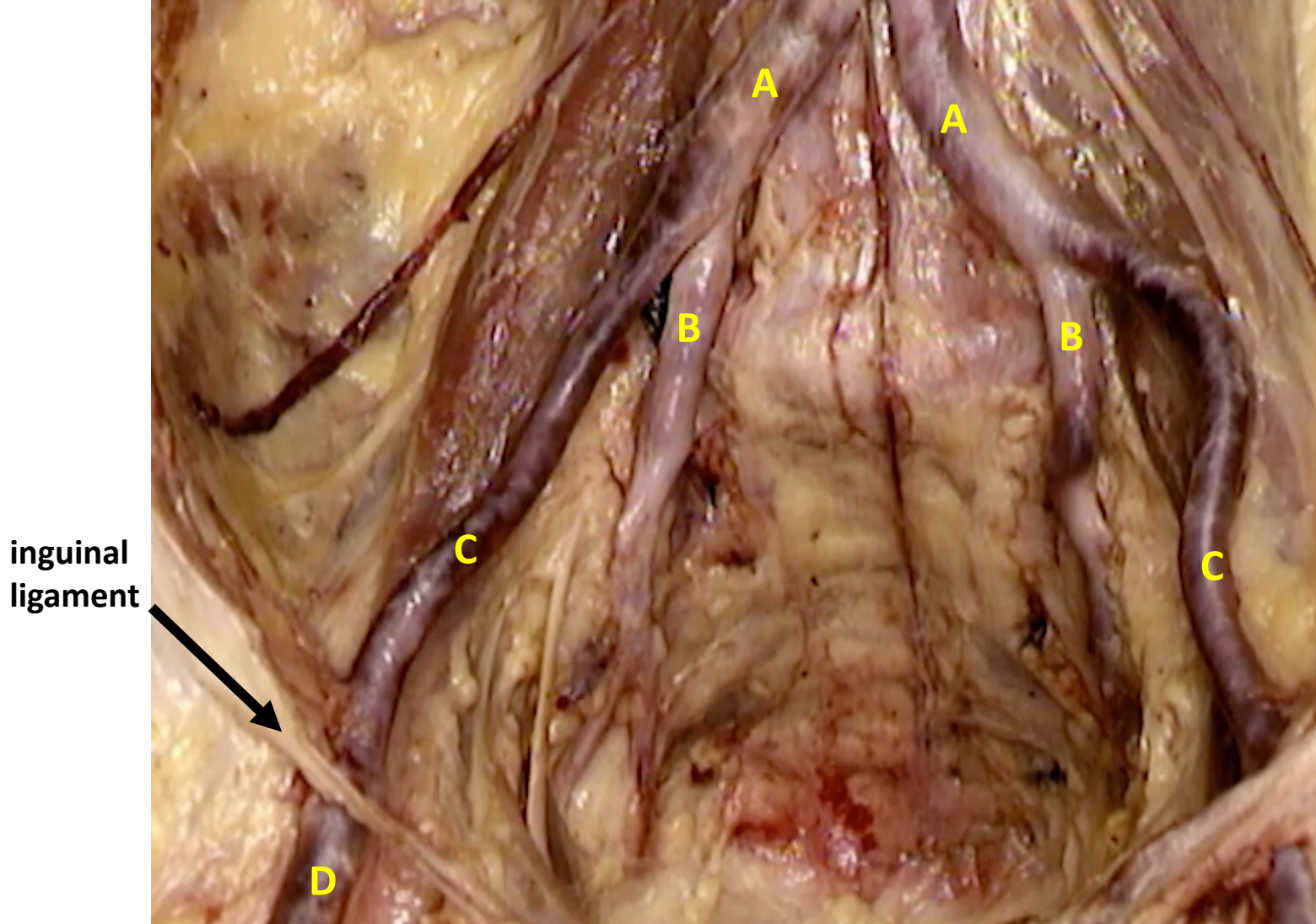


**Quiz Section Test 1-AB**  
**Answers are given in red.**

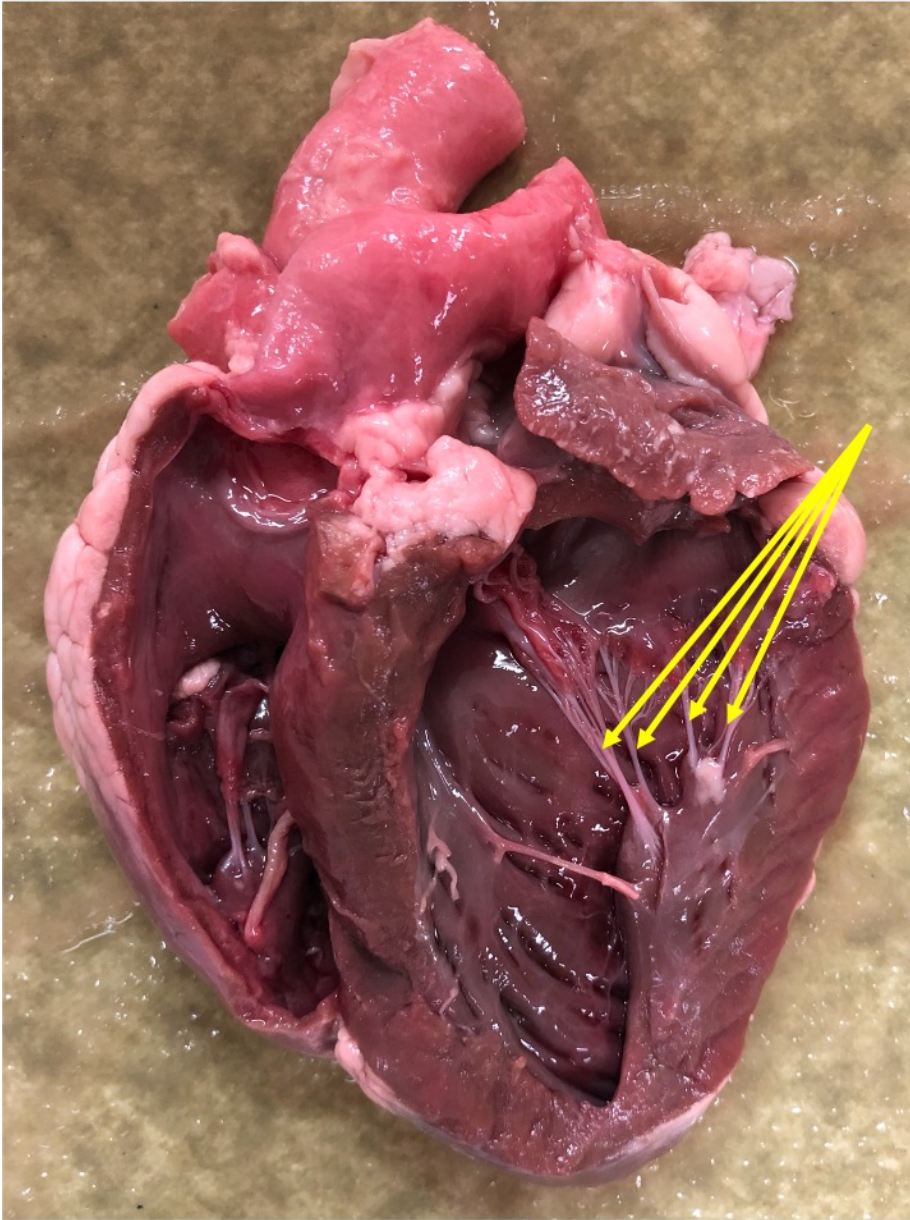


1. Which letter indicates the external iliac artery?

C

2. Fill in the blank. Blood in a brachiocephalic vein flows directly into the \_\_\_\_\_.

**superior vena cava**



**Name the structures indicated by the yellow arrows.**

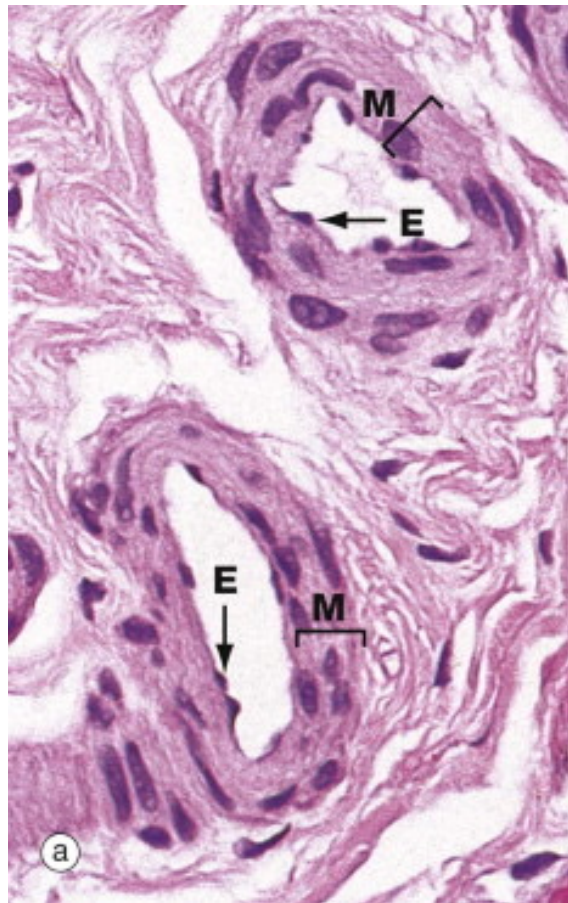
**chordae tendineae**

4. In the treatment of hypertension, which of the following drugs directly targets vascular smooth muscle to cause vasodilation?

- a. ACE inhibitor
- b. thiazide diuretic
- c. PCSK9 inhibitor
- d. **Ca<sup>++</sup> channel blocker**
- e. statin

5. Which of the following valve disorders would cause a systolic murmur? (The mitral valve is the left AV valve).

- a. aortic insufficiency
- b. mitral insufficiency**
- c. mitral stenosis



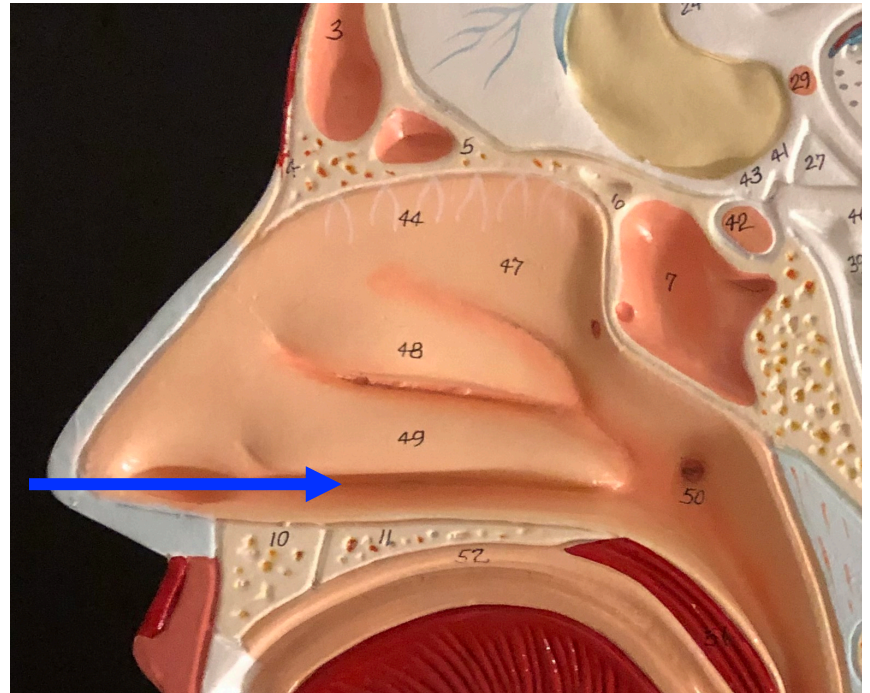
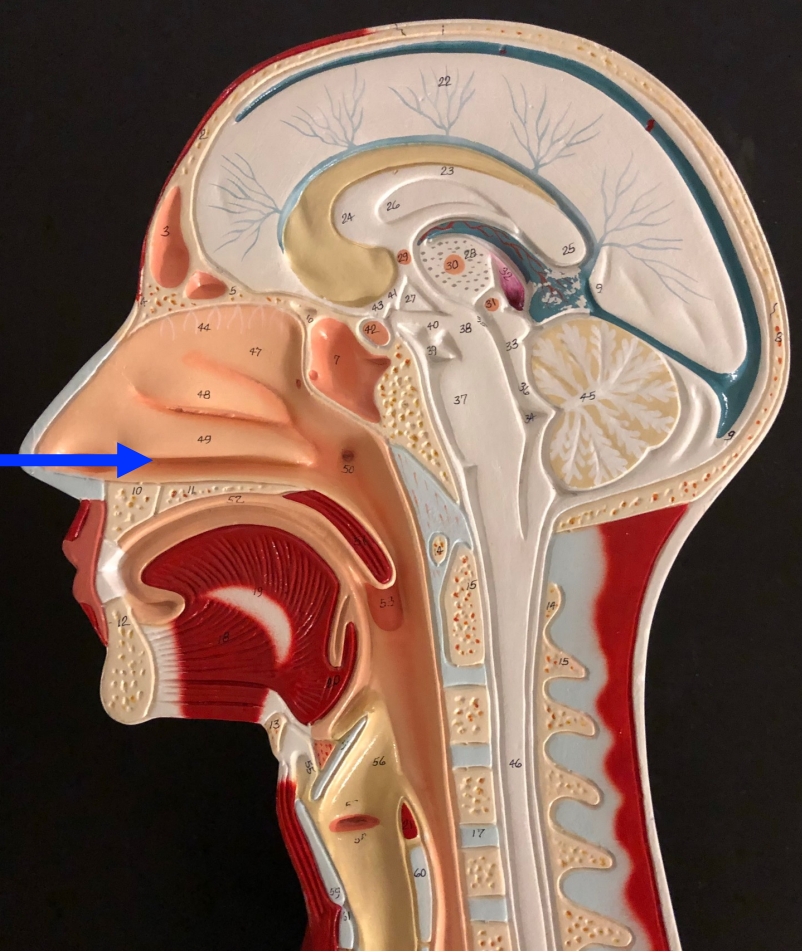
6. Name the structure above that is labeled with the “E”.

**endothelium**

## 7. Treatment with a statin

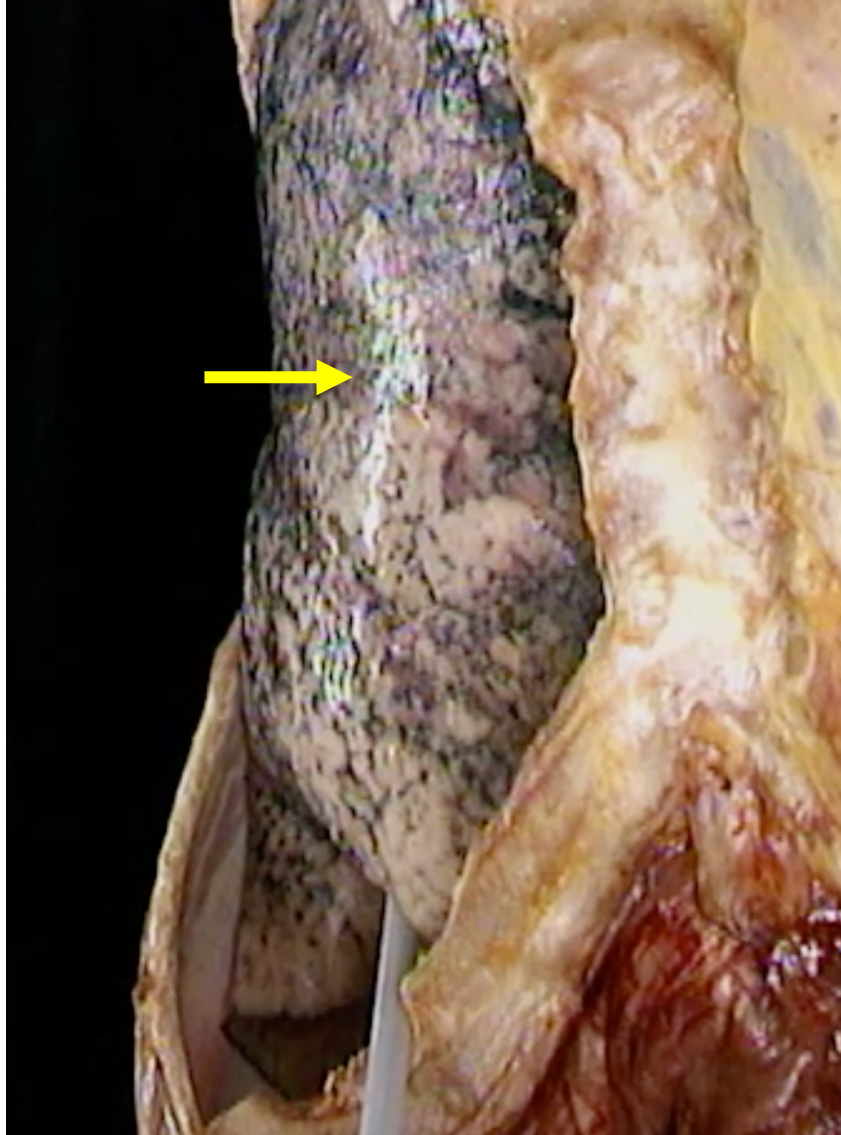
- a. stimulates HMG-CoA reductase and increases LDL receptors.
- b. stimulates HMG-CoA reductase and decreases LDL receptors.
- c. **inhibits HMG-CoA reductase and increases LDL receptors.**
- d. inhibits HMG-CoA reductase and decreases LDL receptors.





8. Name the passageway shown by the arrow.

**Inferior meatus**



9. Give the name for the specific membrane found on the surface of the structure indicated by the arrow.

**visceral pleura**



10. Which of the following is the airway indicated by the question mark?

- a. alveolus
- b. alveolar duct
- c. bronchus
- d. trachea
- e. bronchiole