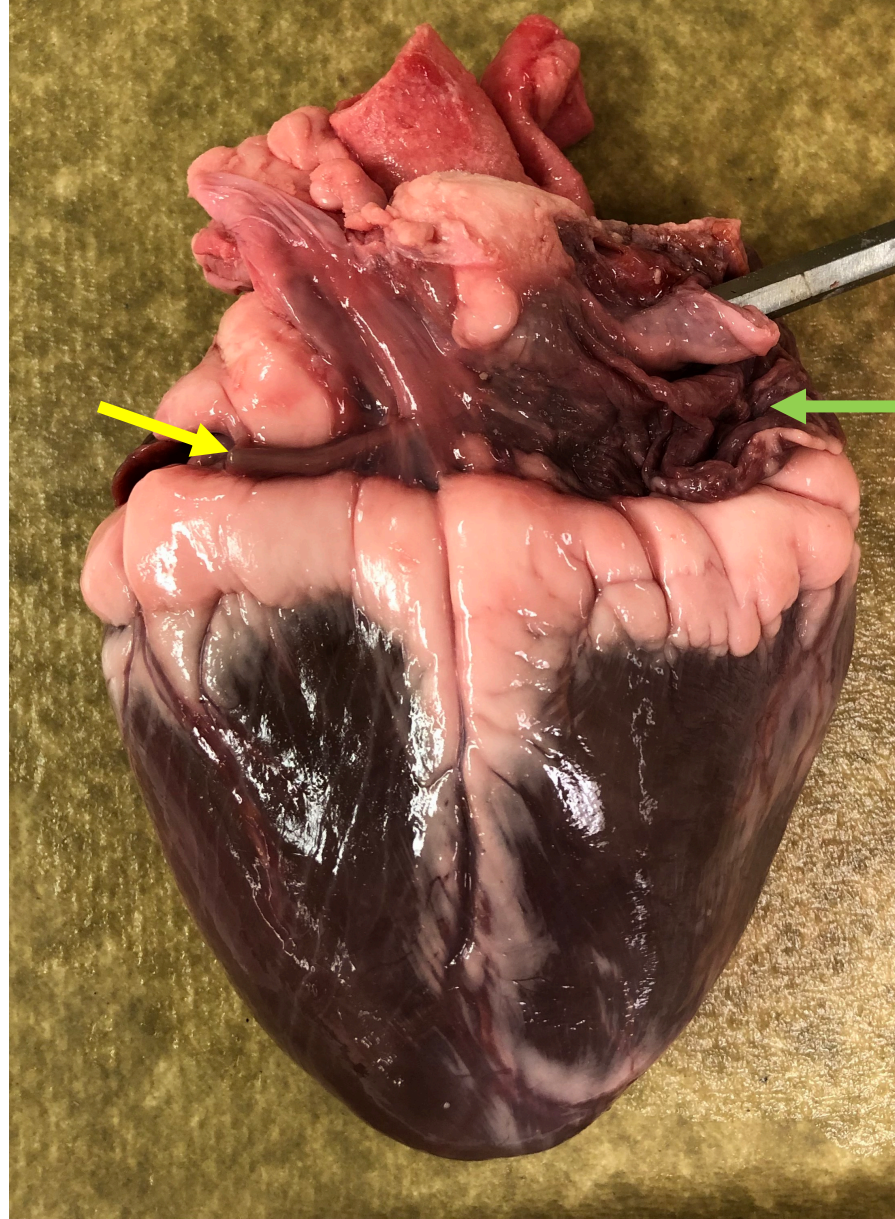


Quiz Section Test 1-AC
Answers are given in red.

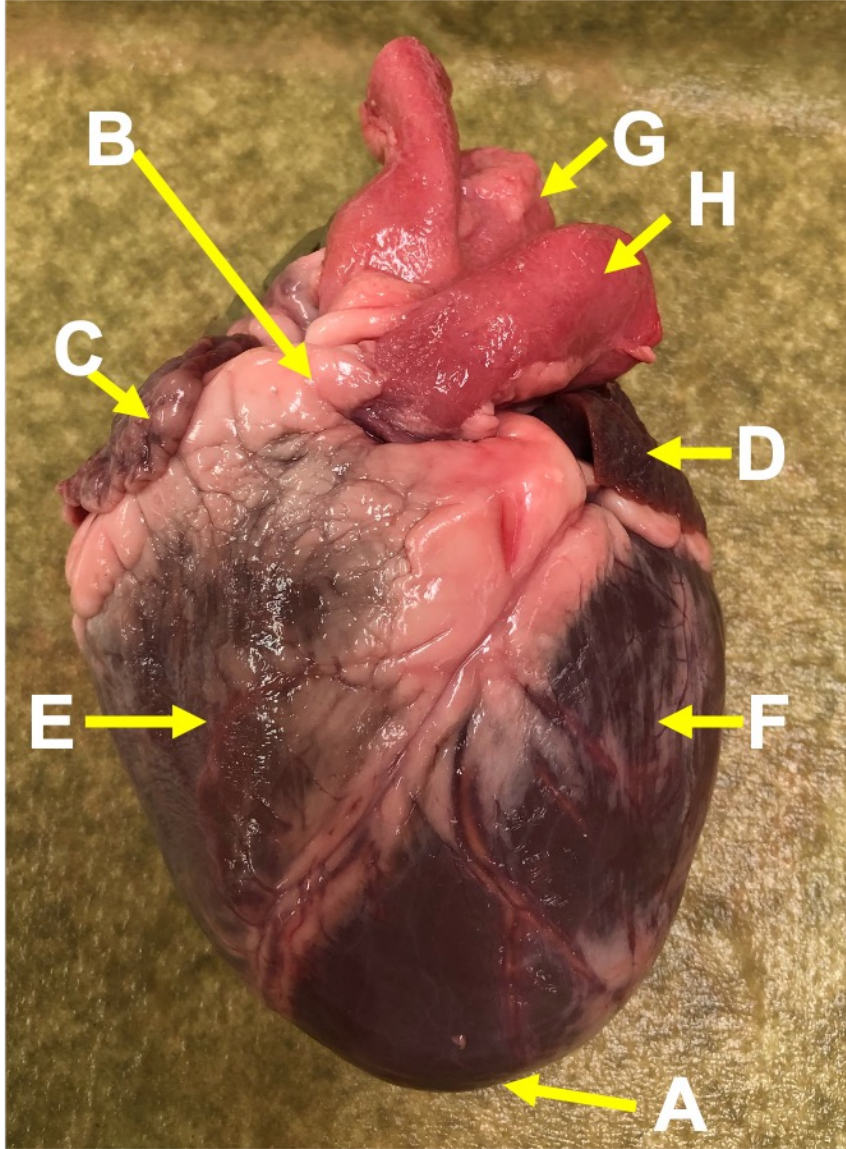


right atrium

1. Name the structure (vessel) indicated by the yellow arrow.

coronary sinus

2. Select the correct sequence of vessels followed by a catheter as it is inserted for transcatheter aortic valve replacement.
- a. subclavian vein...brachiocephalic vein...superior vena cava...aorta
 - b. femoral artery...internal iliac artery...common iliac artery...aorta
 - c. external iliac artery...internal iliac artery...common iliac artery...aorta
 - d. femoral artery...external iliac artery...common iliac artery...aorta**
 - e. femoral artery...common iliac artery...internal iliac artery...aorta



3. Which of the following structures is indicated by the letter A?

- a. apex of heart
- b. base of heart
- c. left atrium
- d. right atrium
- e. right ventricle

4. Which of the following valve disorders would cause a systolic murmur? (The mitral valve is the left AV valve).

a. aortic insufficiency

b. mitral stenosis

c. aortic stenosis

5. The systolic pressure is 116 mmHg and the diastolic pressure is 83 mmHg. Calculate the mean arterial pressure.

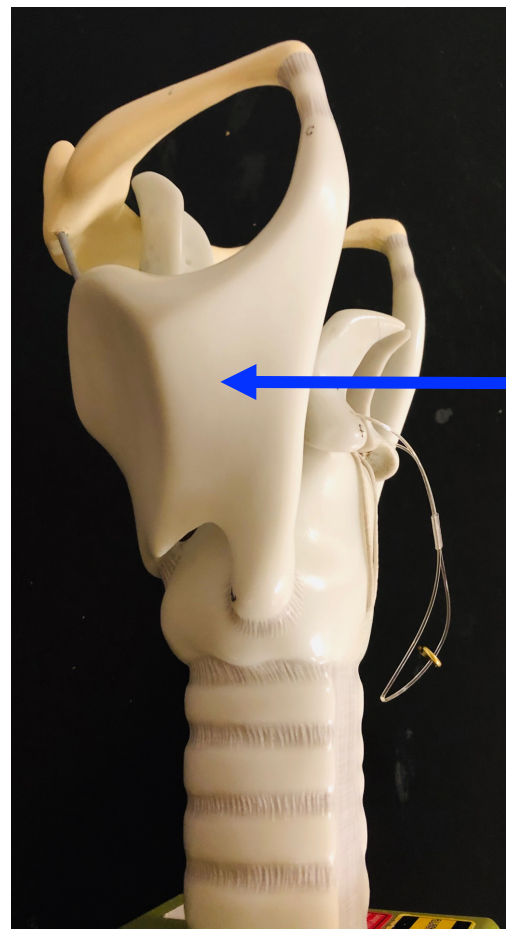
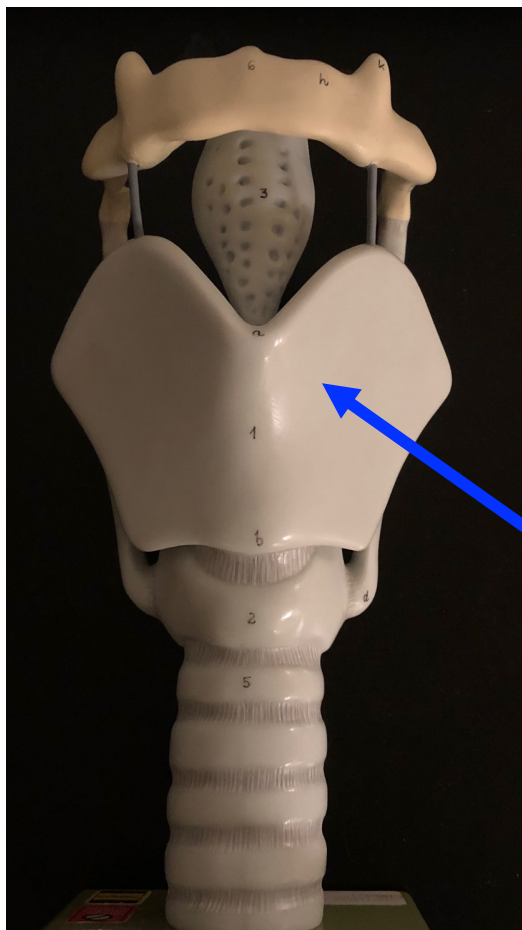
$$\begin{aligned}\text{mean arterial pressure (MAP)} &= \text{DP} + 1/3(\text{SP} - \text{DP}) \\ &= 83 + 1/3(116-83) = 94 \text{ mmHg}\end{aligned}$$

6. Name the lipoprotein that is involved in reverse cholesterol transport. Low levels of this lipoprotein are a risk factor for atherosclerotic cardiovascular disease.

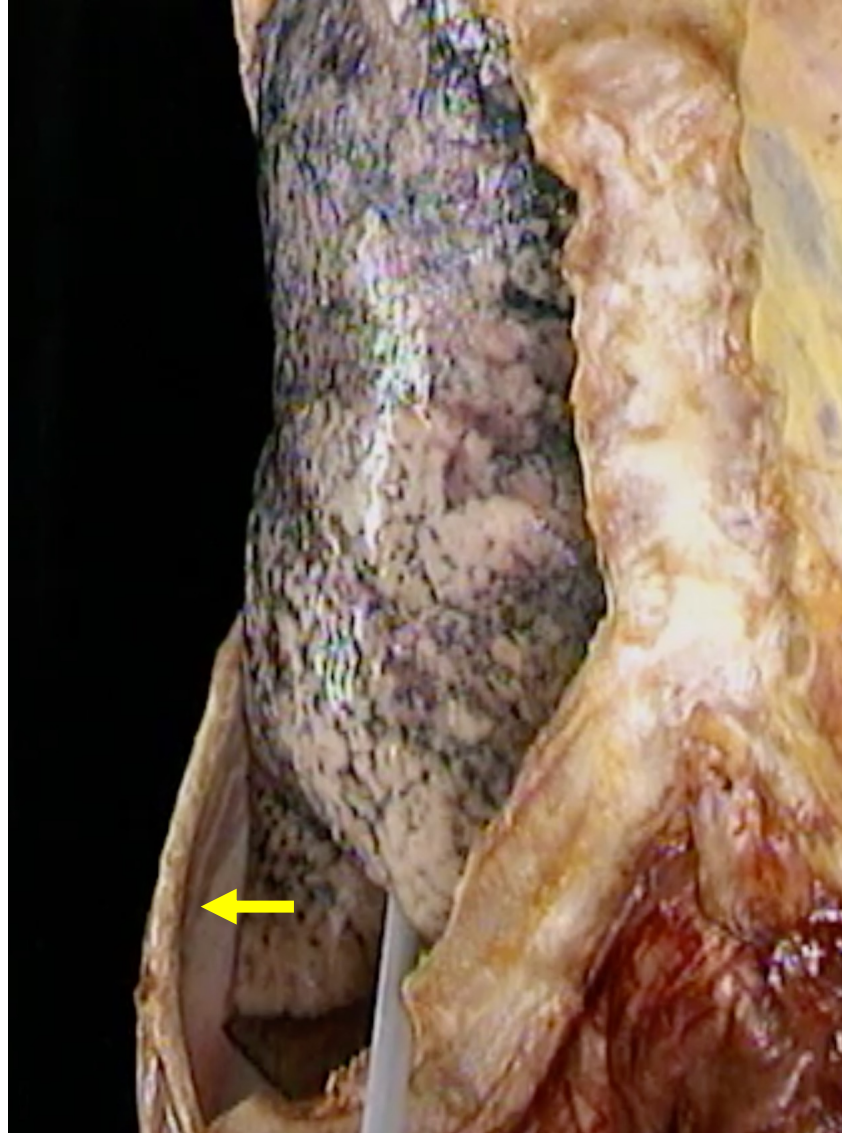
HDL (high-density lipoprotein)

7. Treatment with a statin

- a. stimulates HMG-CoA reductase and increases LDL receptors.
- b. stimulates HMG-CoA reductase and decreases LDL receptors.
- c. **inhibits HMG-CoA reductase and increases LDL receptors.**
- d. inhibits HMG-CoA reductase and decreases LDL receptors.

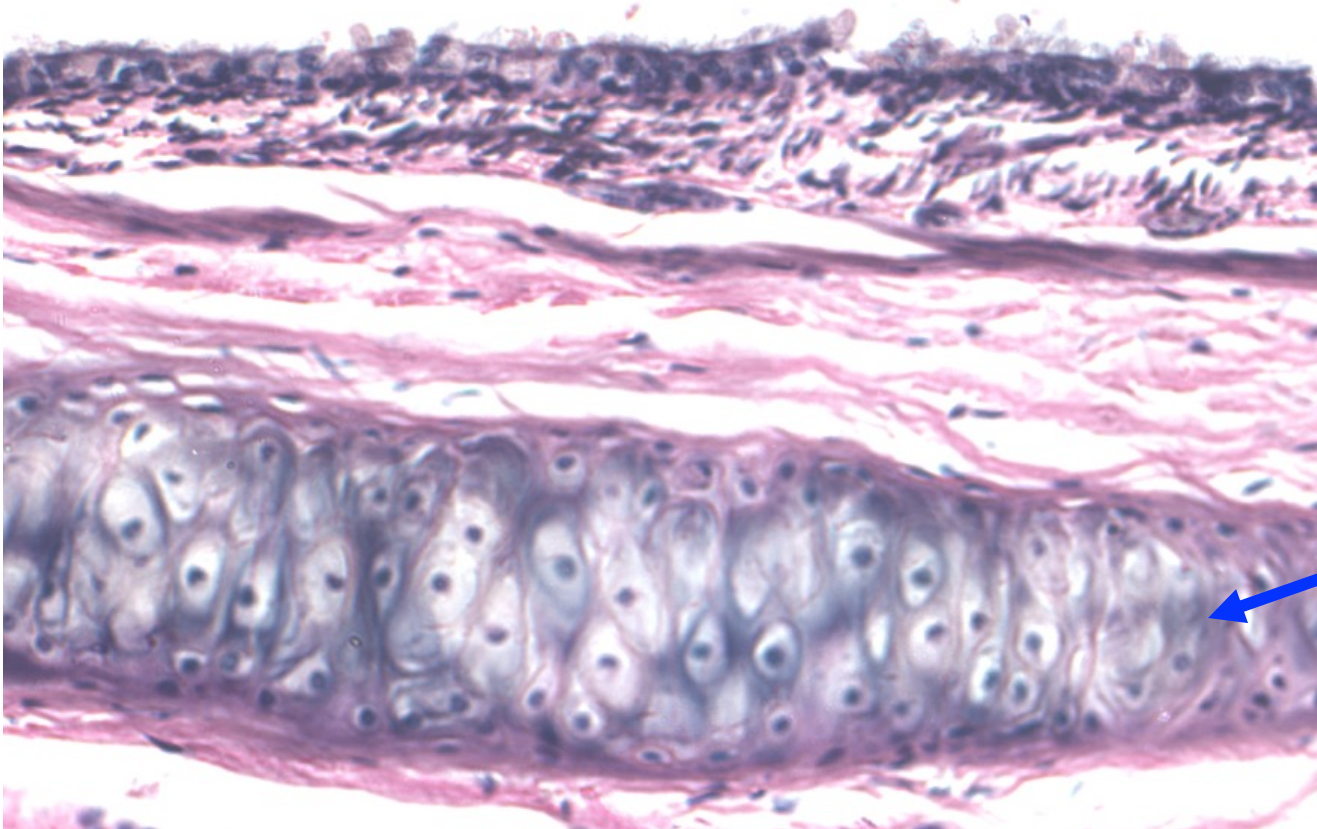


8. Which of the following is indicated by the arrow?
- a. hyoid bone
 - b. arytenoid cartilage
 - c. cricoid cartilage
 - d. glottis
 - e. **thyroid cartilage**



9. Name the specific membrane covering the structure indicated by the arrow.

parietal pleura



10. Above is a high magnification view of the wall of a bronchus. Which of the following is indicated by the arrow?
- a. pseudostratified ciliated epithelium
 - b. smooth muscle
 - c. cartilage plate
 - d. submucosal gland