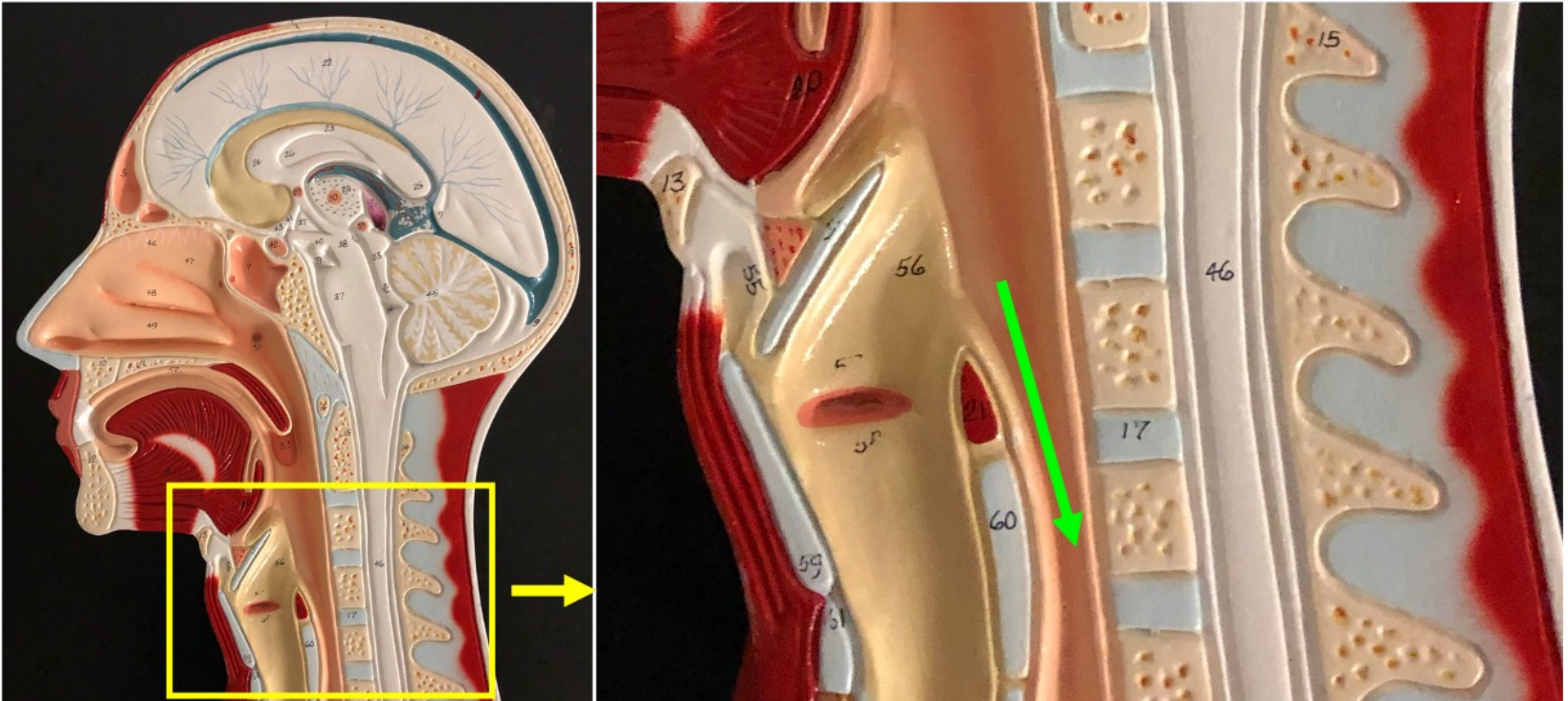
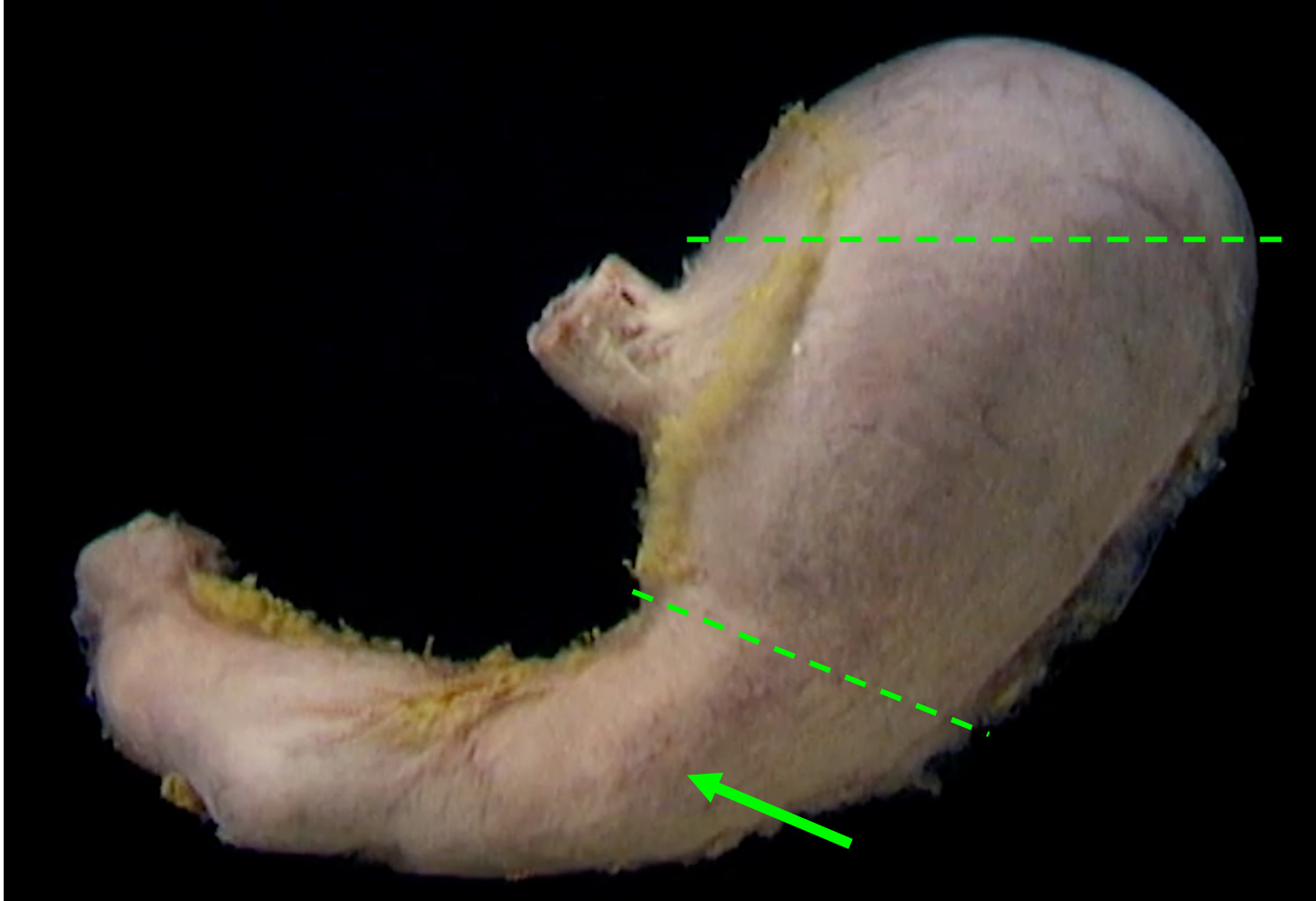


**Quiz Section Test 2-AA**  
**Answers are given in red.**



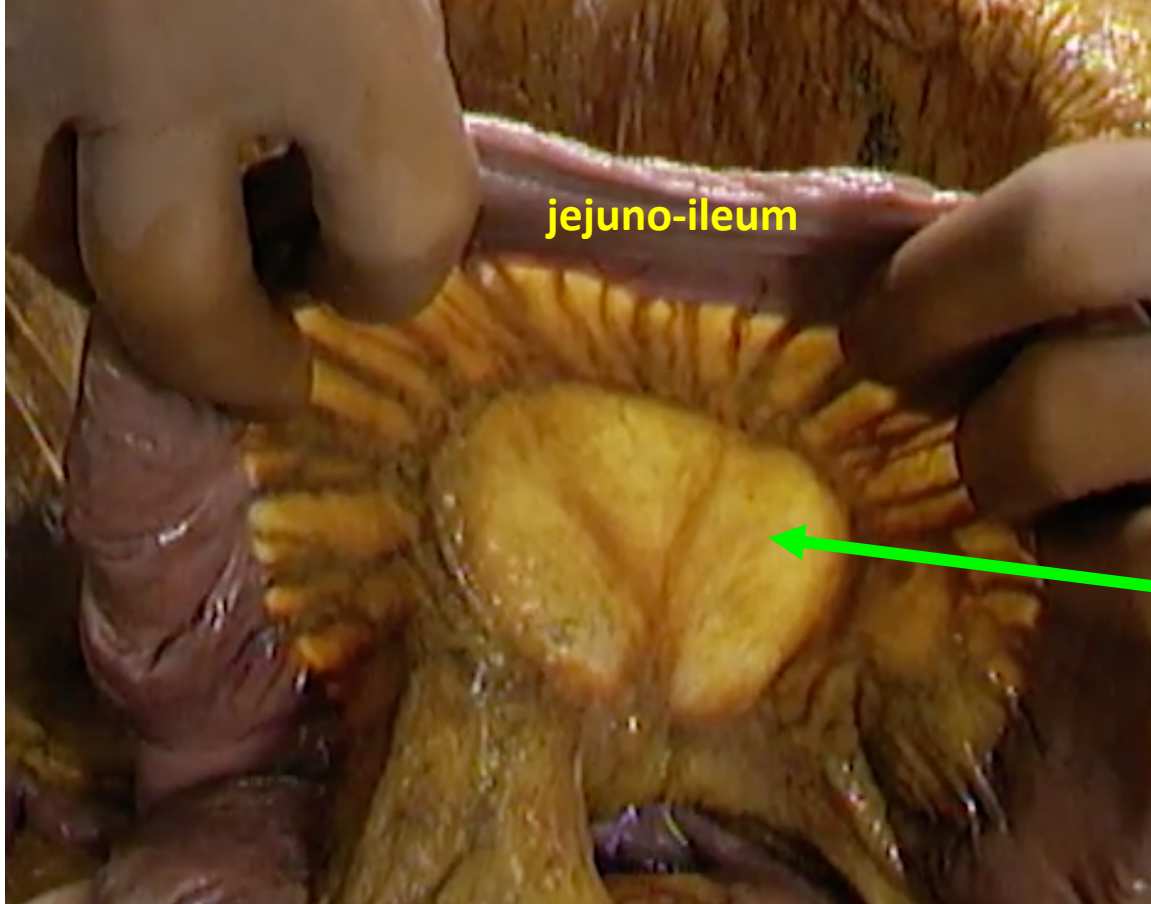
1. Name the structure indicated by the green arrow.

**esophagus**



2. What region is indicated by the arrow?

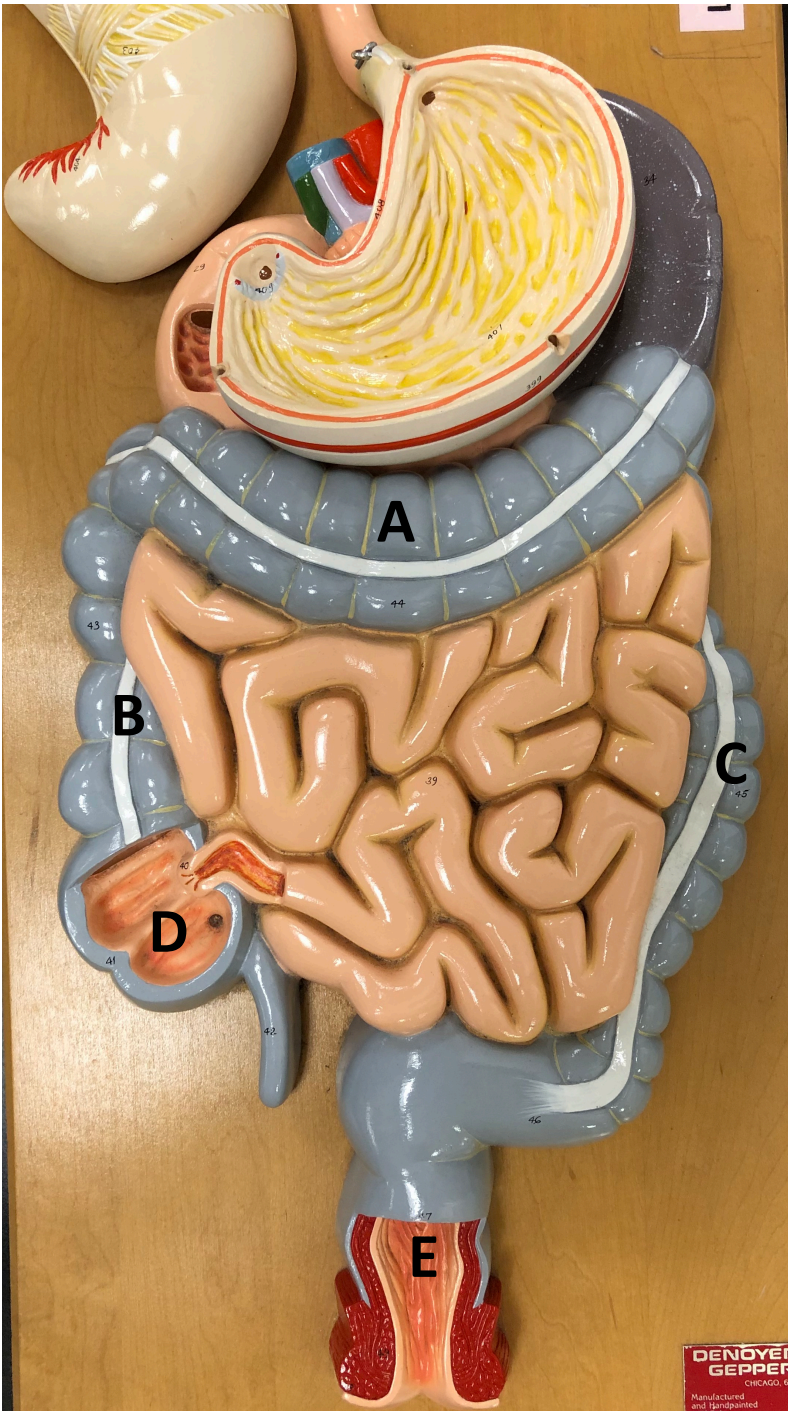
- a. antrum
- b. body
- c. fundus
- d. pylorus



**3. Name the structure indicated by the green arrow.**

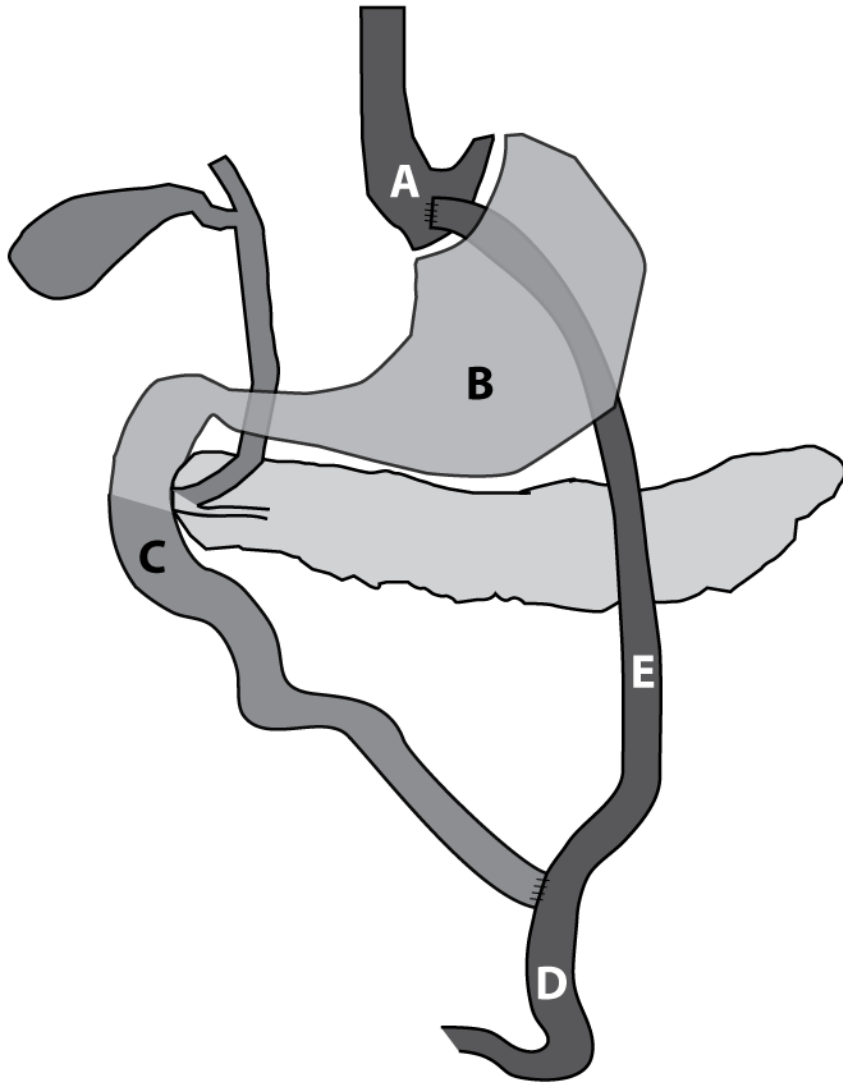
**mesentery**





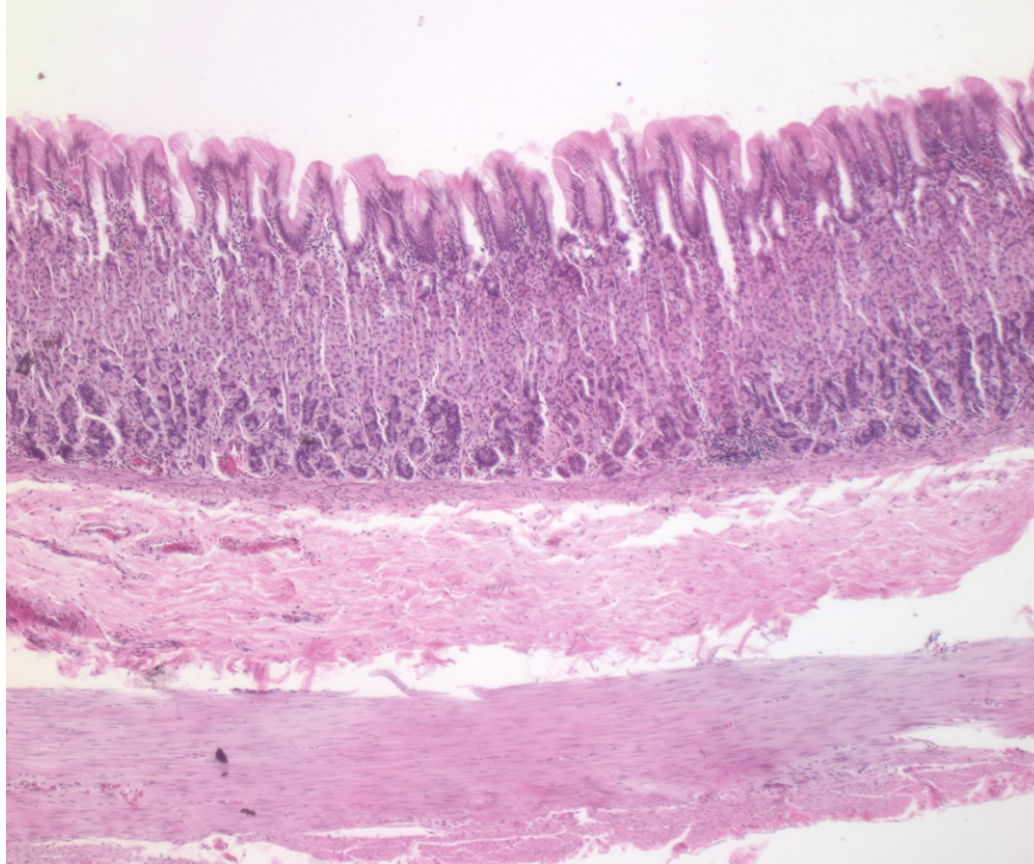
4. Name the structure indicated by the letter A. Be specific.

transverse colon



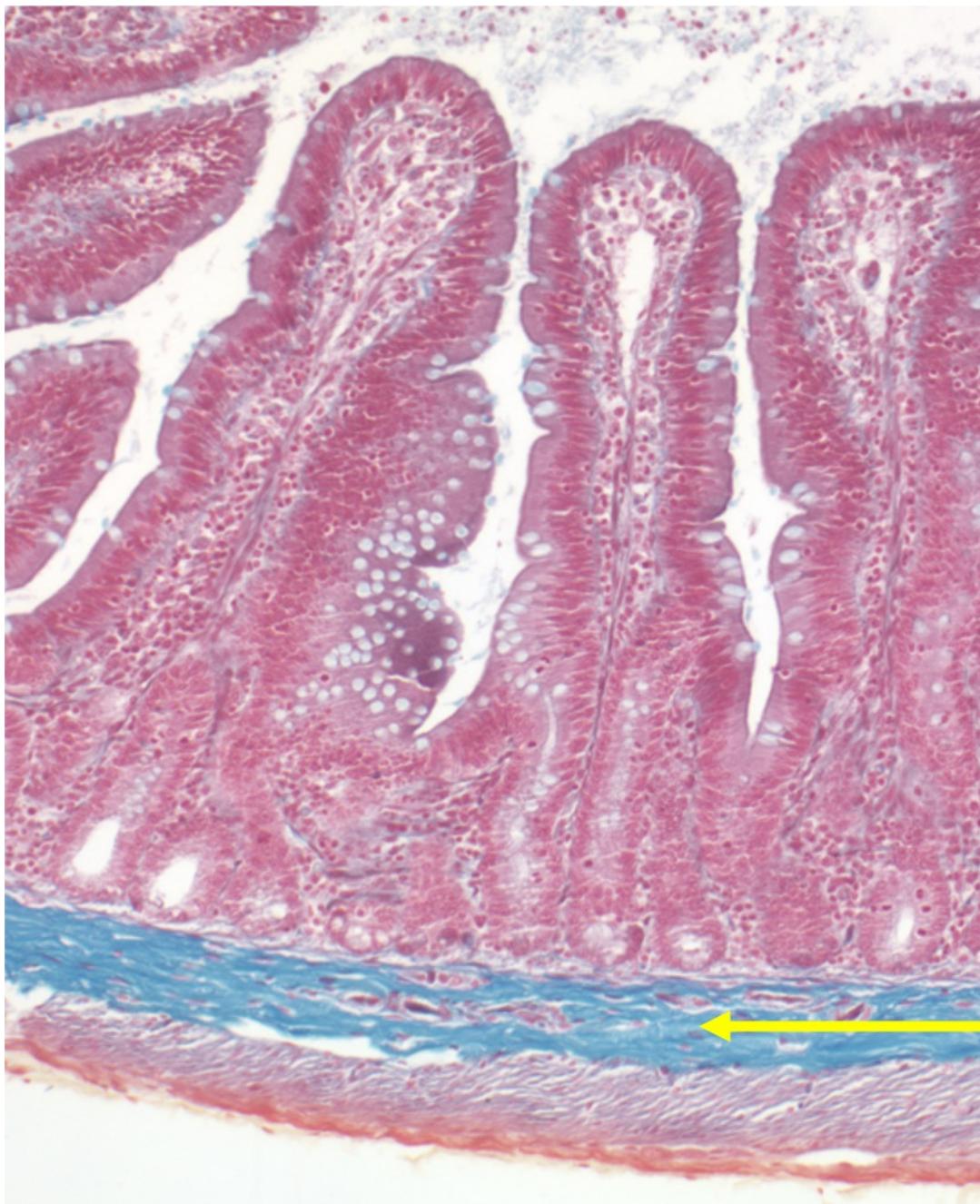
5. The figure at left diagrams the configuration of the digestive tract following Roux-en-Y gastric bypass (RYGB) surgery. Which letter indicates the location where digestion and absorption occur?

**D**



6. Which of the following organs is shown above?
- a. esophagus
  - b. stomach**
  - c. duodenum
  - d. jejunum-ileum
  - e. large intestine

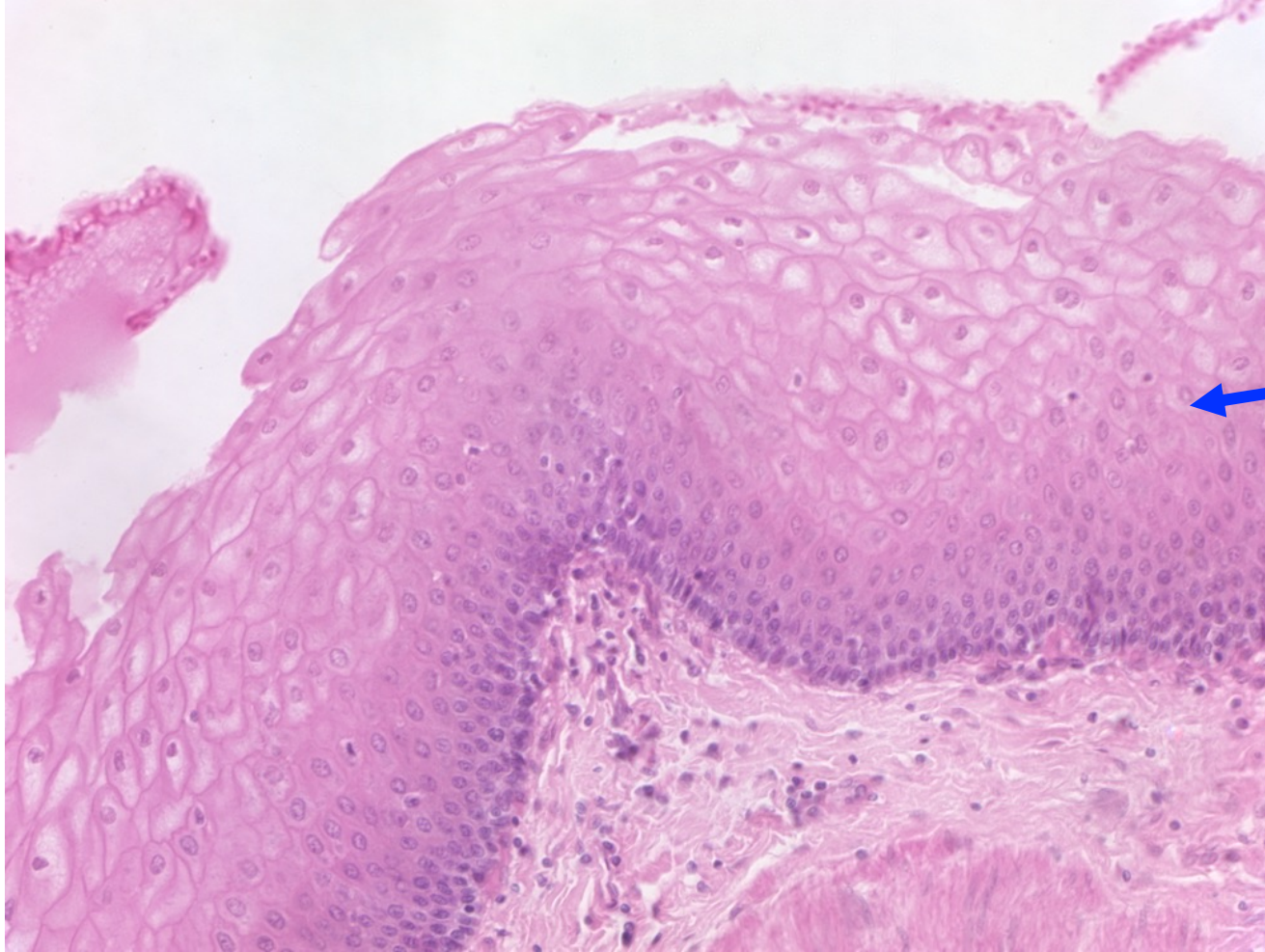




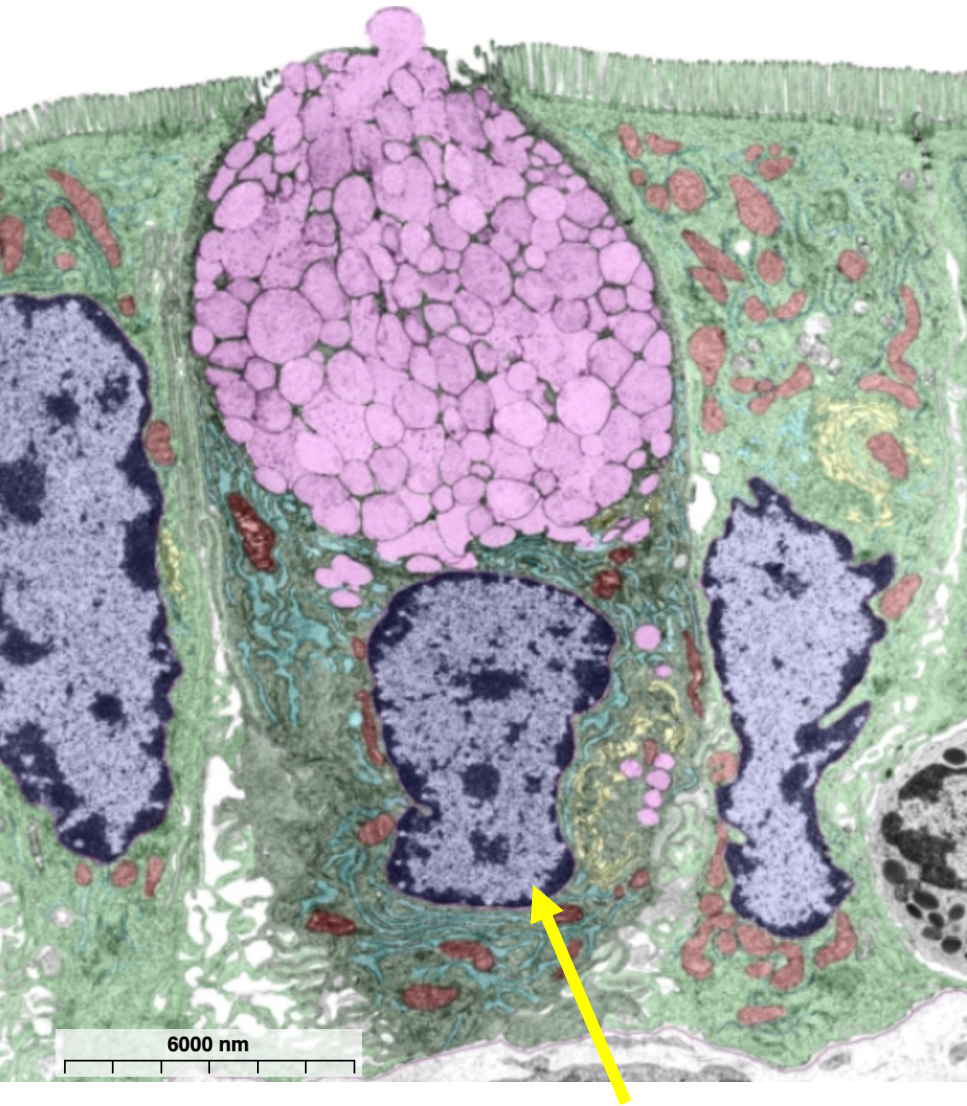
7. Name the region indicated by the yellow arrow.

**submucosa**



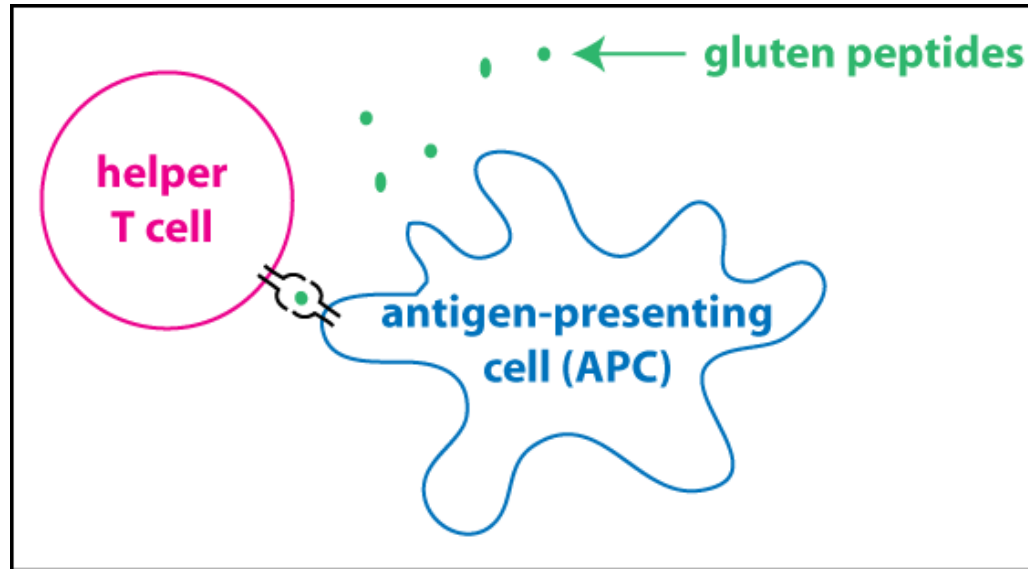


8. What type of epithelium is indicated by the arrow?
- a. simple columnar epithelium
  - b. highly folded simple epithelium
  - c. **stratified squamous epithelium**



9. Which of the following cells is indicated by the yellow arrow?

- a. enterocyte
- b. chief cell
- c. parietal cell
- d. goblet cell
- e. neuron in the myenteric plexus



10. The figure above shows the cellular interactions that occur in the development of autoimmunity in celiac disease. Where is this occurring?
- a. lumen of small intestine
  - b. lamina propria of small intestine**
  - c. submucosa of small intestine
  - d. lymph node
  - e. lumen of stomach