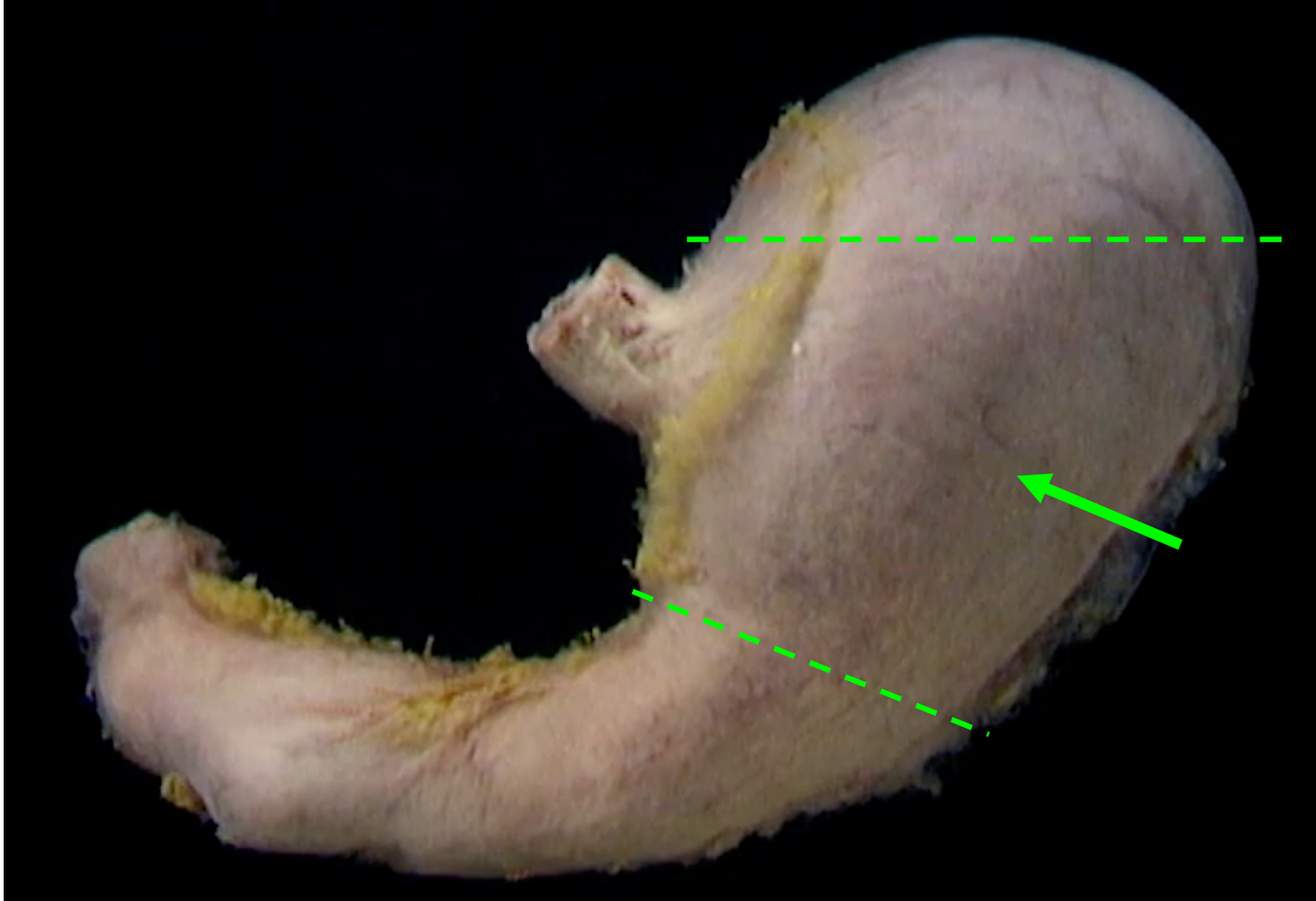


Quiz Section Test 2-AB
Answers are given in red.



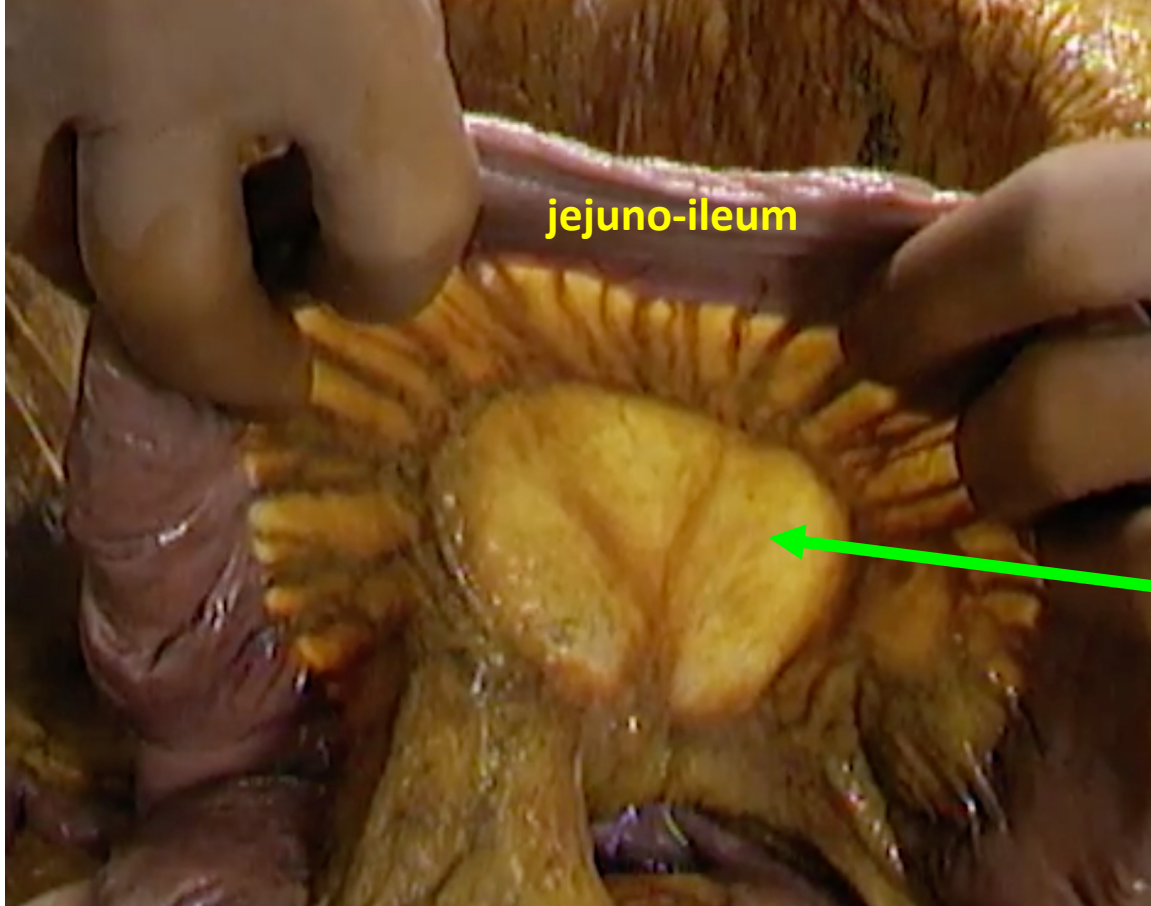
1. What region is indicated by the arrow?

a. antrum

b. body

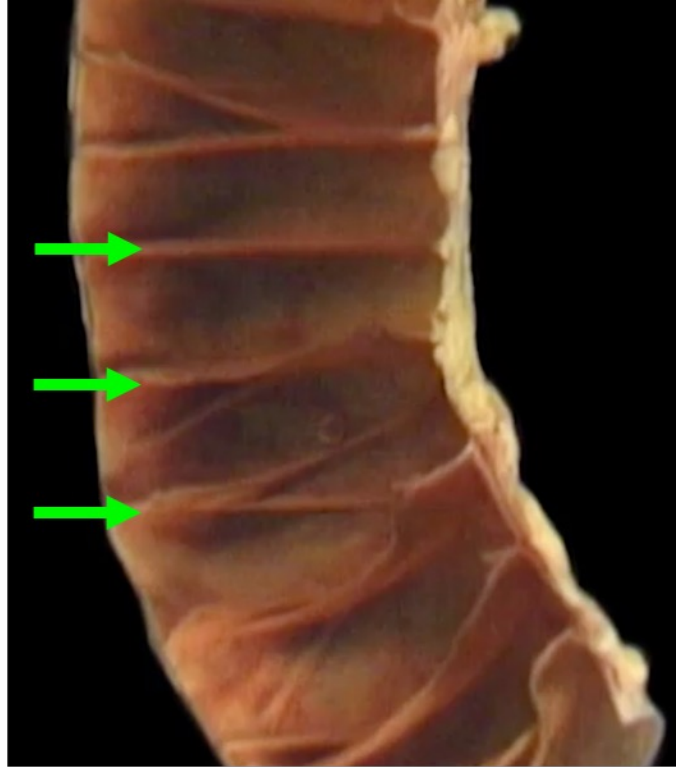
c. fundus

d. pylorus



2. Name the structure indicated by the green arrow.

mesentery



3. What is the name for the folds indicated by the green arrows?
- a. rugae
 - b. flexures
 - c. **plicae circulares**
 - d. villi
 - e. microvilli

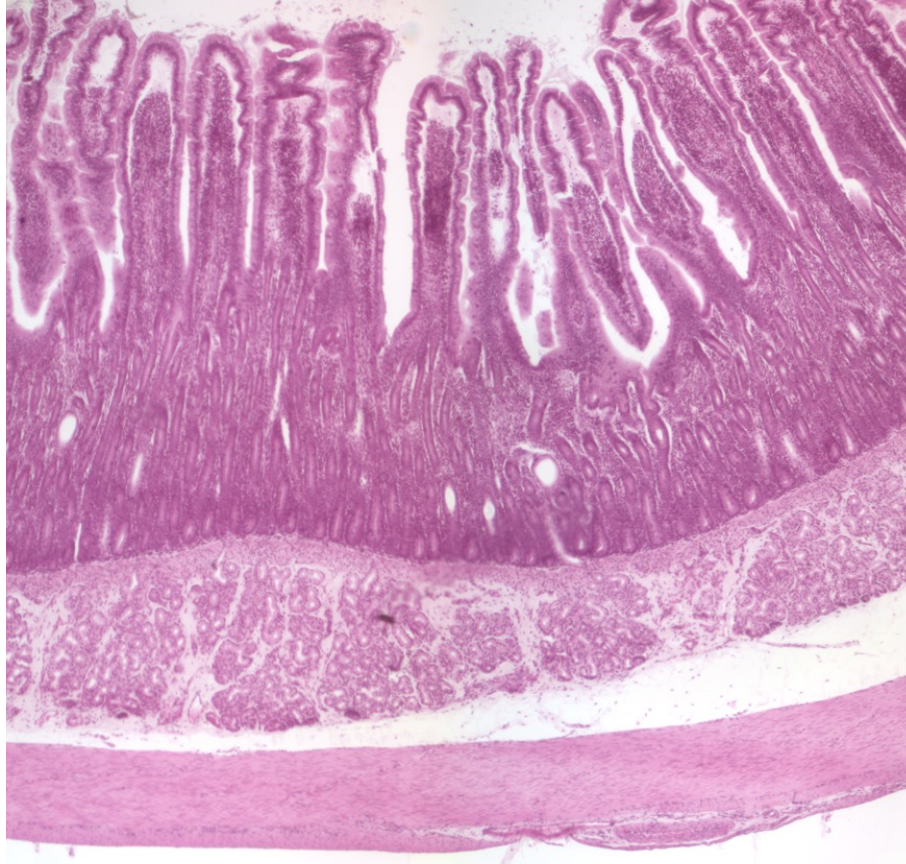


4. Name the structure indicated by the arrow. Be specific.

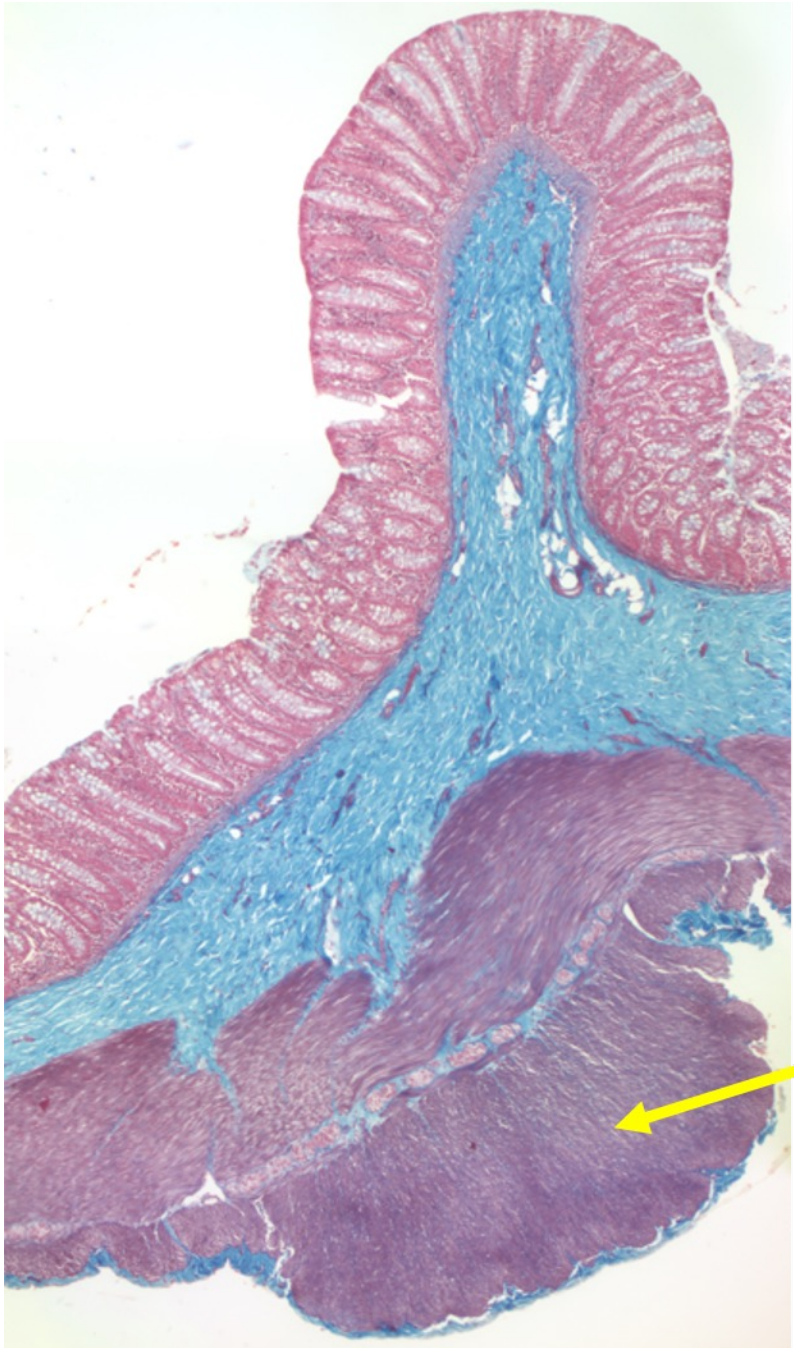
common bile duct

5. Which of the following is the incretin hormone whose secretion *increases* following bariatric surgery?

- a. ghrelin
- b. secretin
- c. gastrin
- d. GLP-1**
- e. glucagon

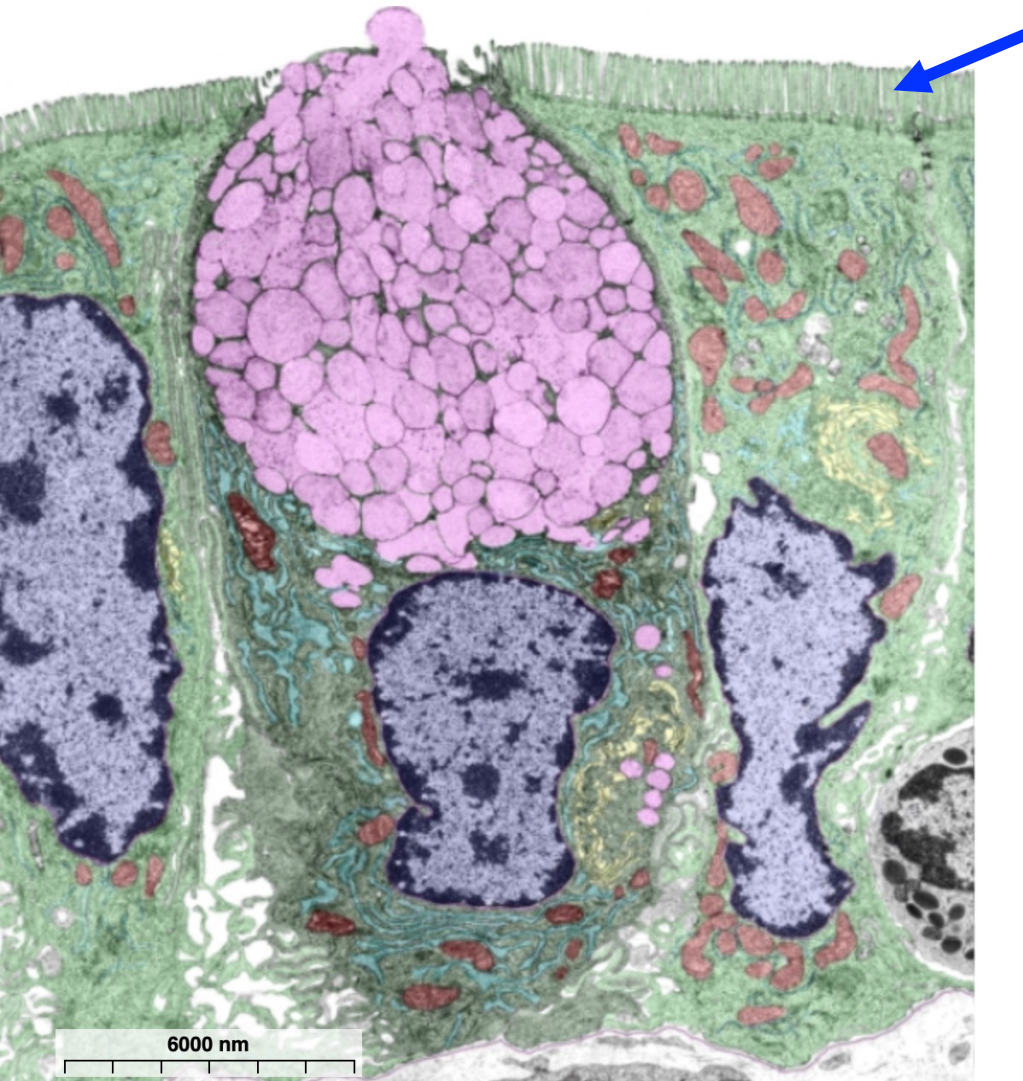


6. Which of the following organs is shown above?
- a. esophagus
 - b. stomach
 - c. duodenum
 - d. jejunum-ileum
 - e. large intestine



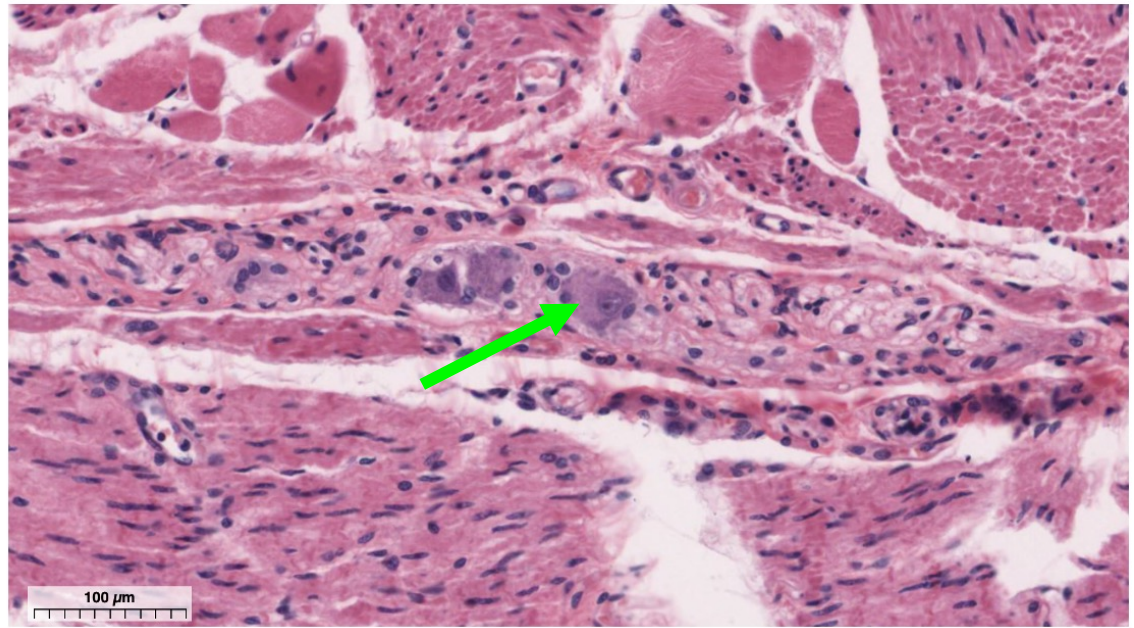
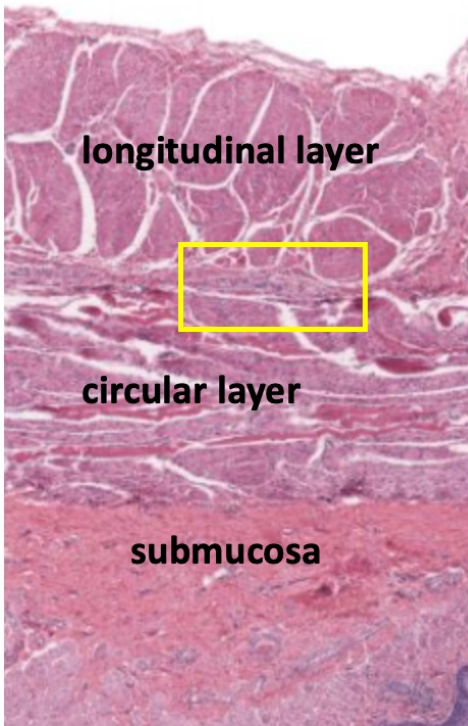
7. Name the structure indicated by the yellow arrow.

tenia coli



8. Name the structures indicated by the blue arrow.

microvilli



9. What is shown by the green arrow?
- a. an enterocyte in the intestinal epithelium
 - b. a smooth muscle cell in the muscularis mucosae
 - c. a goblet cell in the intestinal epithelium
 - d. a neuron in the myenteric plexus**
 - e. a chief cell in a gastric gland

10. A duodenal biopsy is a key test for the diagnosis of celiac disease. What is missing in a duodenal biopsy from a patient with celiac disease?

- a. intraepithelial lymphocytes
- b. villi**
- c. lamina propria
- d. GALT (gut-associated lymphoid tissue)
- e. goblet cells