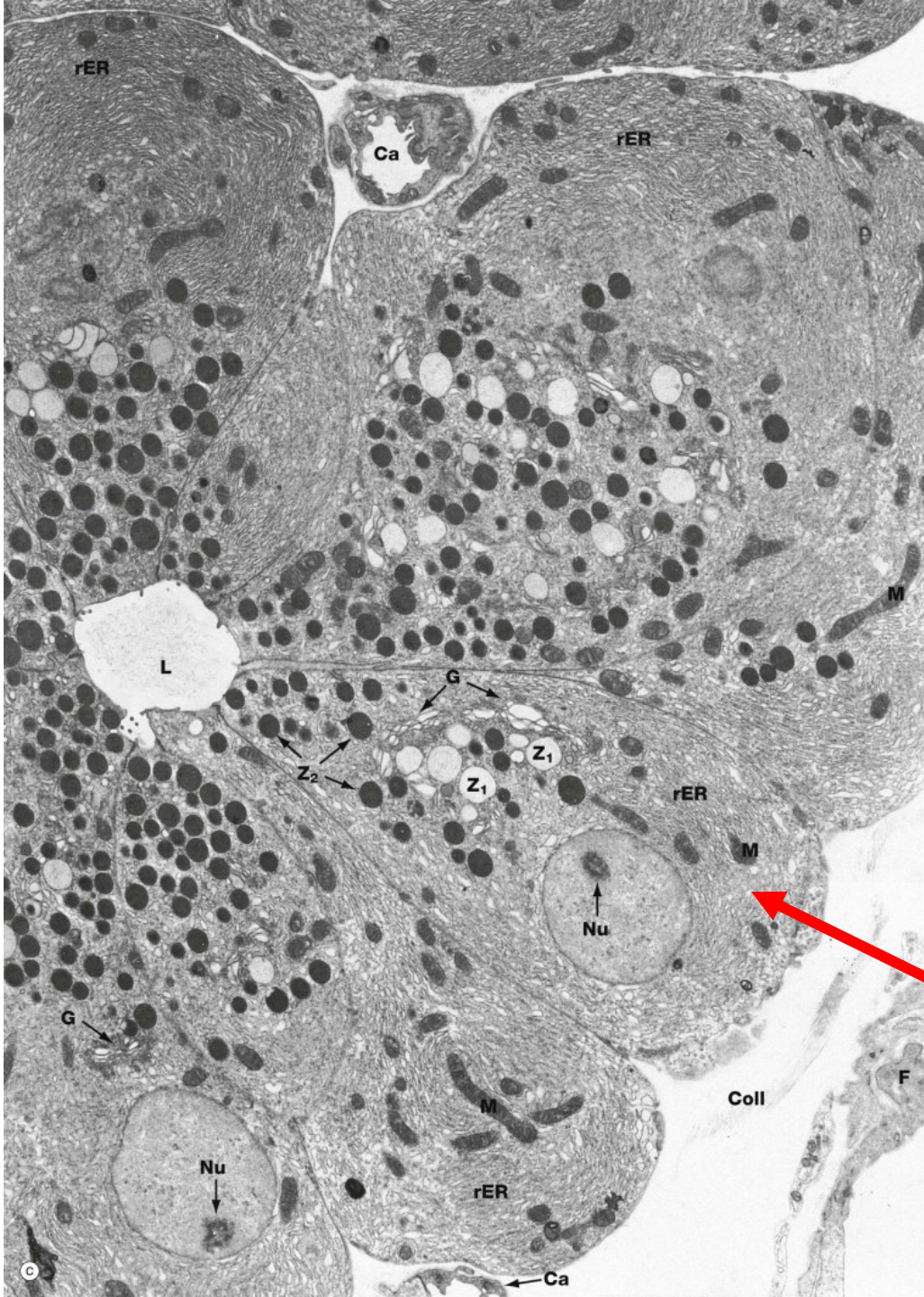


**Quiz Section Test 3-AB**  
**Answers are given in red.**

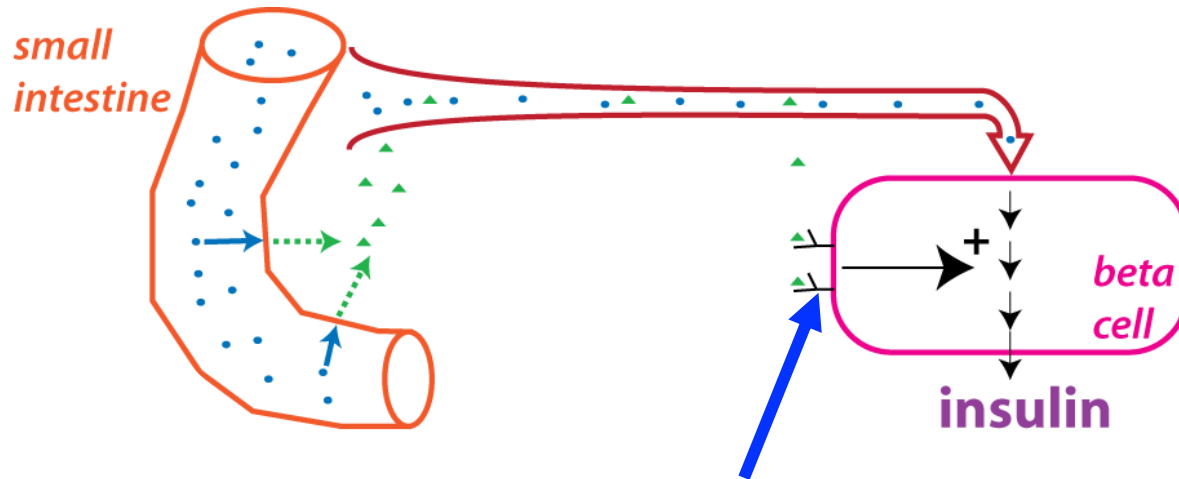


1. Which of the following is indicated by the arrow? (Dark black circles are zymogen granules.)

- a. follicle cell
- b. duct cell
- c. acinar cell
- d. alpha cell
- e. beta cell

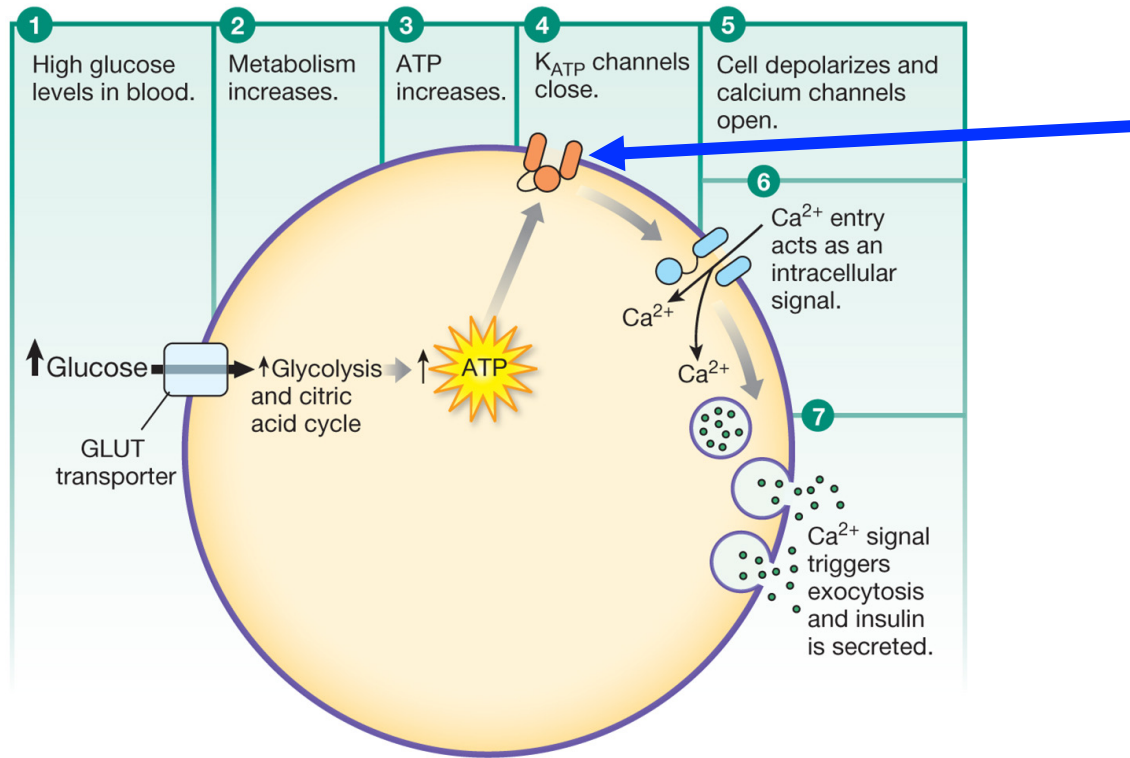
**2. Which type of diabetes mellitus is characterized by insulin resistance?**

**type 2 diabetes mellitus**



3. Which of the following drugs acts directly on the protein indicated by the arrow?

- a. DPP-4 inhibitor
- b. metformin
- c. sulfonylurea
- d. **GLP-1 agonist**
- e. SGLT2 inhibitor



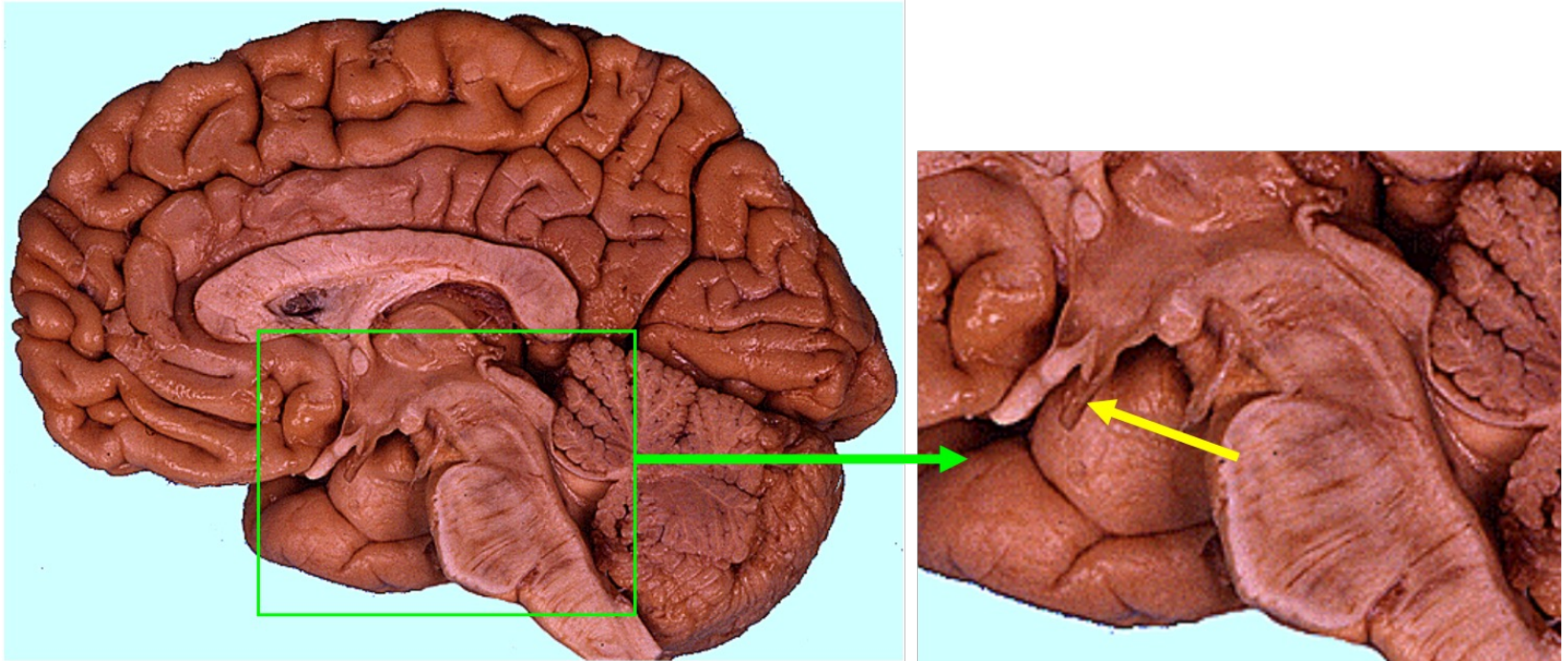
4. Which of the following drugs acts on the protein indicated by the arrow?

- a. DPP-4 inhibitor
- b. **sulfonylurea**
- c. insulin
- d. GLP-1 agonist
- e. SGLT2 inhibitor

5. Which of the following is the most widely used drug for the treatment of type 2 diabetes mellitus? This drug is usually the first drug prescribed when diabetes is diagnosed.

- a. DPP-4 inhibitor
- b. SGLT2 inhibitor
- c. insulin
- d. GLP-1 agonist
- e. **metformin**





**6. Name the structure indicated by the yellow arrow.**

**stalk of the pituitary gland**

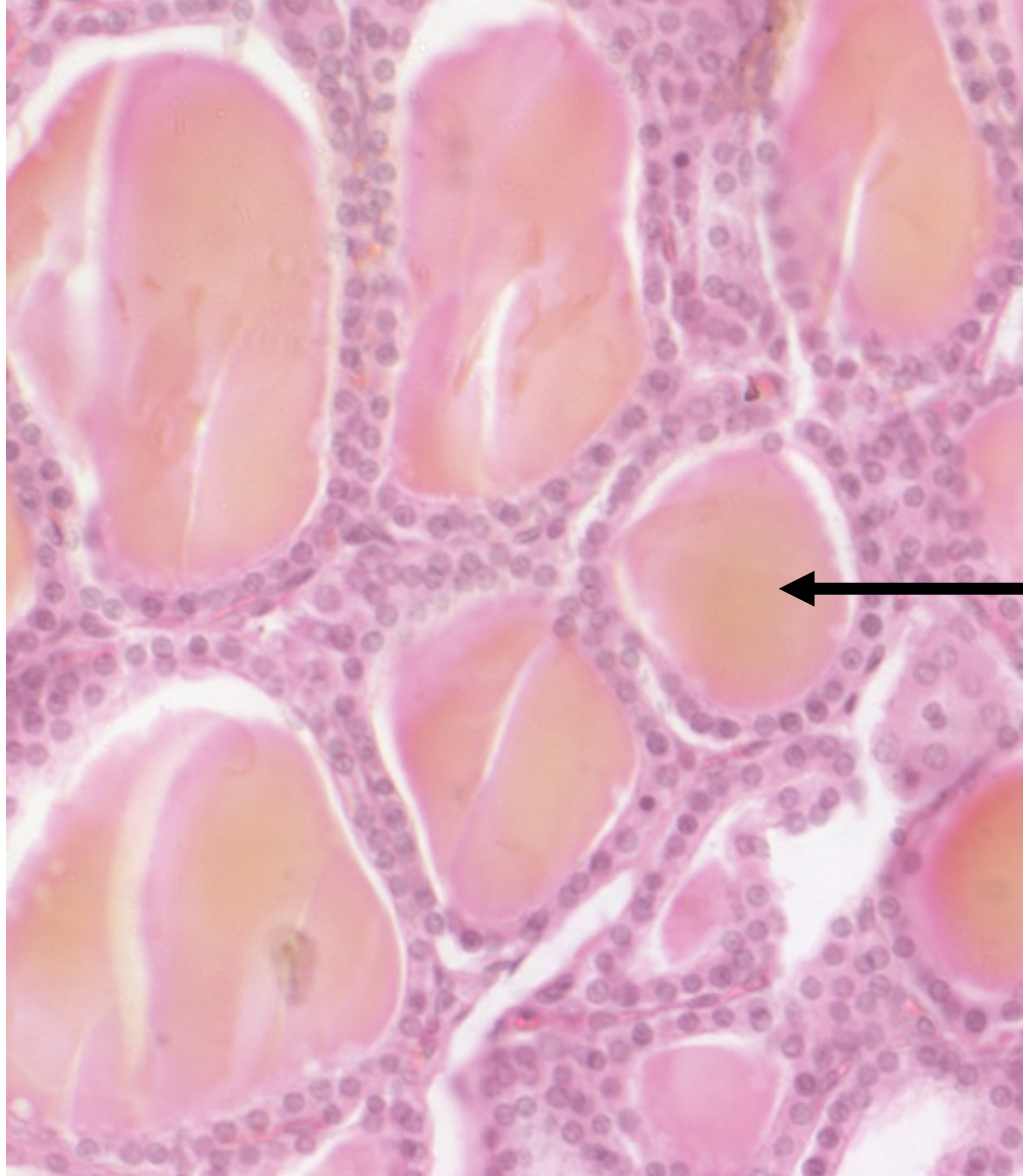
7. Where would you find the cell body of a cell that secretes the hormone CRH (corticotropin releasing hormone)?

- a. anterior pituitary
- b. posterior pituitary
- c. **hypothalamus**
- d. adrenal cortex



8. Treatment with what type of drug can cause hypopituitary adrenal insufficiency?

- a. **glucocorticoid**
- b. thyroxine
- c. metformin
- d. GLP-1 agonist
- e. SGLT2 inhibitor



9. Name the protein that is found in the space indicated by the arrow.

**thyroglobulin**

10. What is the pattern of hormone secretion in Graves' disease?
- a. low T3, T4 and high TSH
  - b. low T3, T4 and low TSH
  - c. high T3, T4 and high TSH
  - d. **high T3, T4 and low TSH**