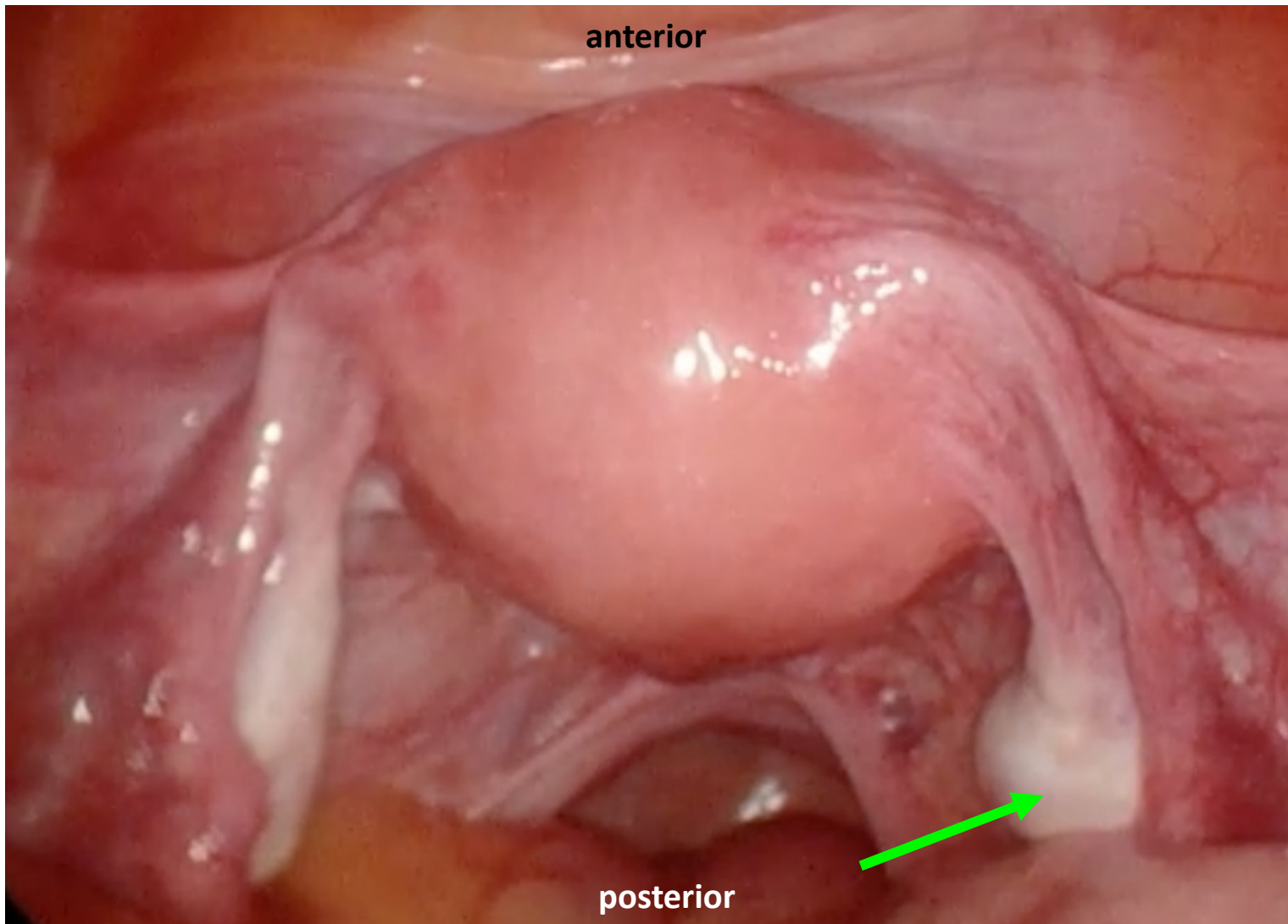
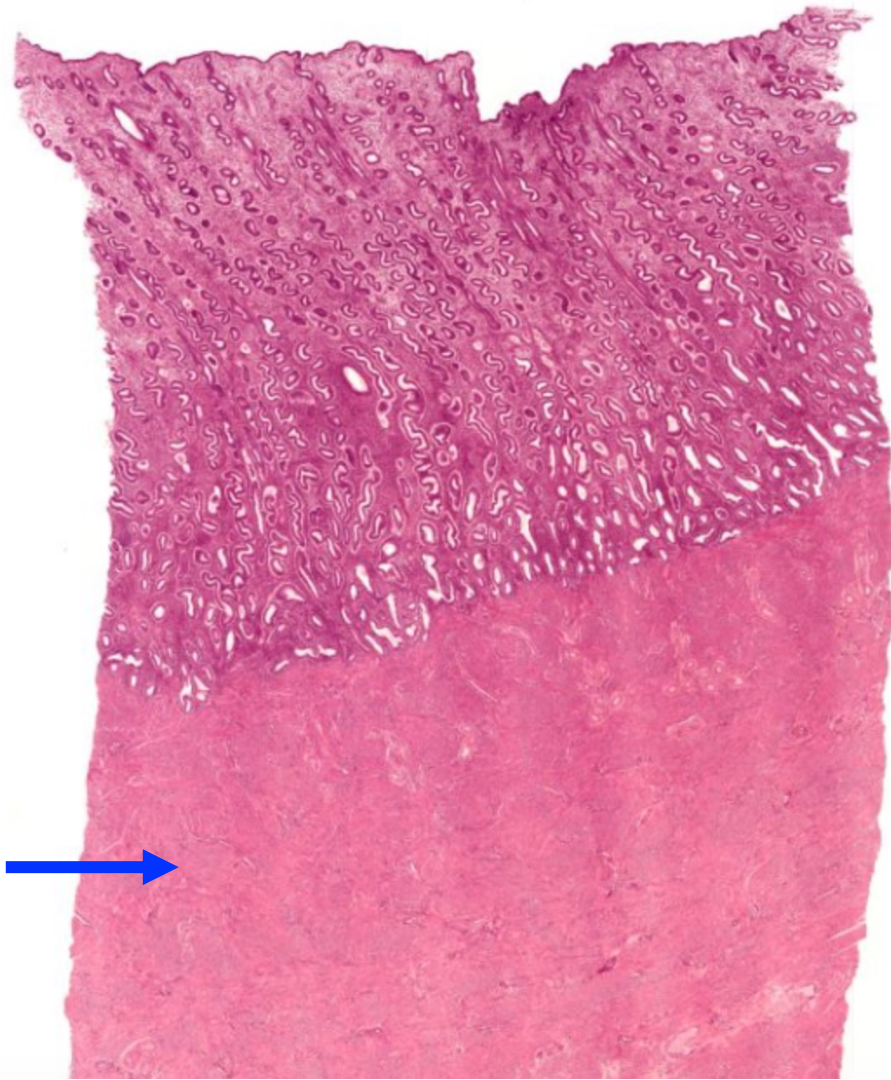


Quiz Section Test 4-AA
Answers are given in red.



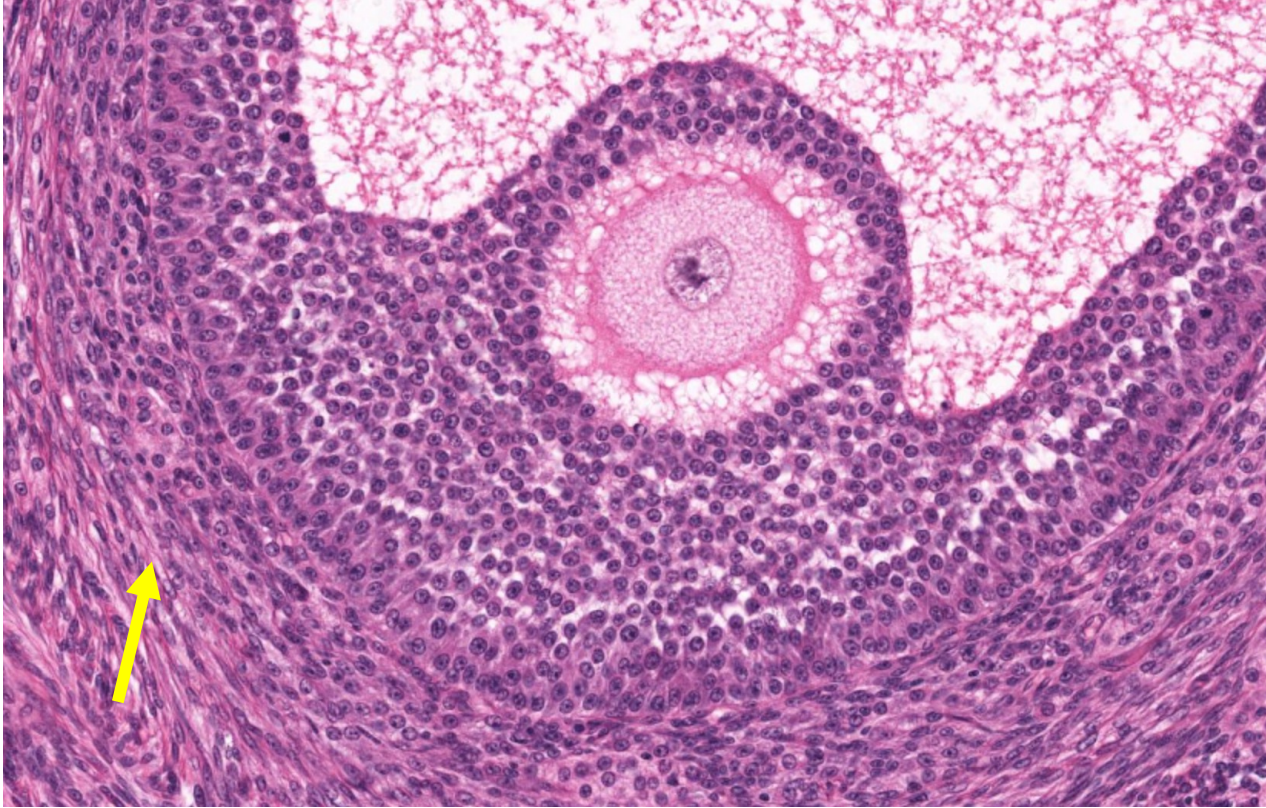
1. Name the structure indicated by the arrow.

ovary



2. Name the layer of the uterus indicated by the blue arrow.

myometrium



3. Which of the following cells is shown by the yellow arrow?
- a. granulosa cell
 - b. Sertoli cell
 - c. thecal cell
 - d. Leydig cell
 - e. oocyte

4. Which phase is characterized by high progesterone secretion?
- a. follicular phase
 - b. menstrual phase
 - c. proliferative phase
 - d. secretory phase

5. Why would a woman with polycystic ovary syndrome (PCOS) be prescribed a hormonal contraceptive?

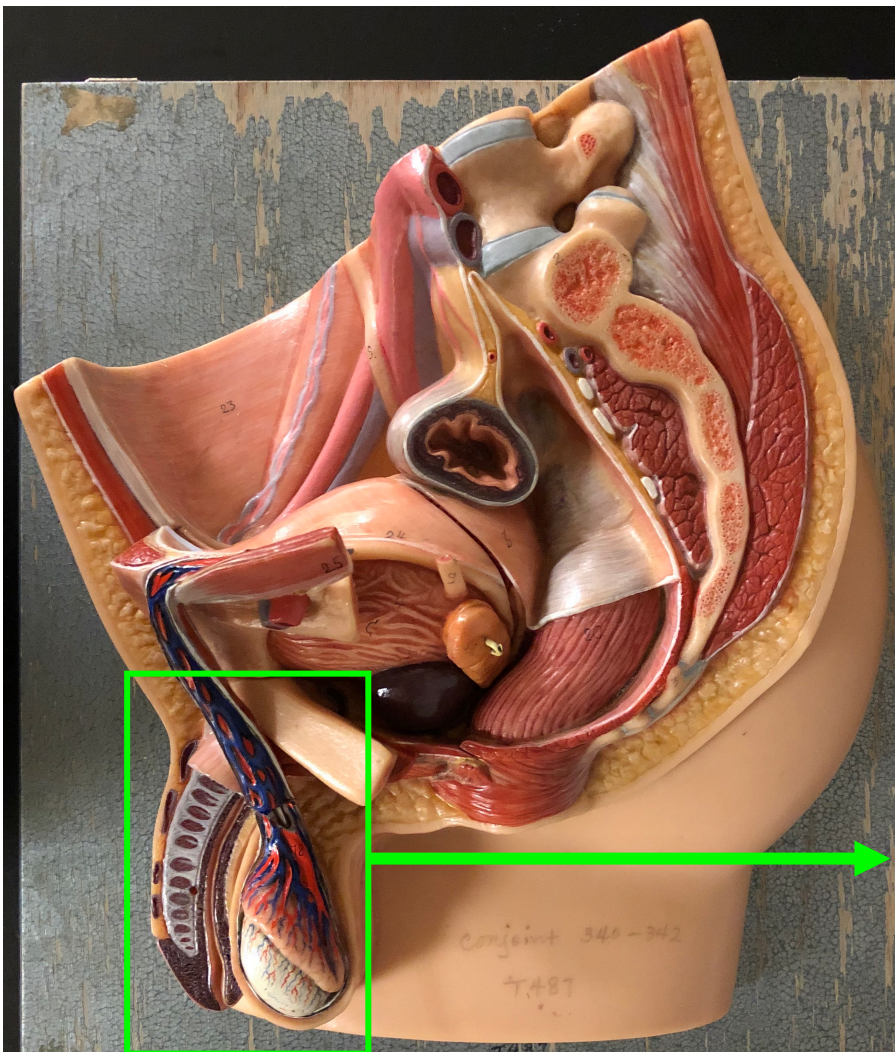
- a. to increase FSH secretion
- b. to induce ovulation
- c. to increase insulin sensitivity
- d. to decrease androgen secretion

6. Letrozole is a drug that is used for ovulation induction in the treatment of PCOS. How does letrozole work?

- a. estrogen antagonist
- b. inhibits estrogen synthesis**
- c. FSH agonist
- d. inhibits androgen synthesis

7. Name the hormone that is secreted from the hypothalamus in a pulsatile manner to stimulate secretion of the hormones FSH and LH.

GnRH



8. Name the erectile tissue indicated by the blue arrow.

corpus cavernosum



9. Which of the following is indicated by the arrow?
- a. ductus deferens
 - b. scrotum
 - c. testis
 - d. epididymis**
 - e. spermatic cord

10. Fill in the blank. Stimulation of the erectile tissues increases _____, which promotes erection by acting inside vascular smooth muscle cells to cause relaxation.

- a. acetylcholine
- b. norepinephrine
- c. CO₂
- d. phosphodiesterase
- e. nitric oxide (NO)