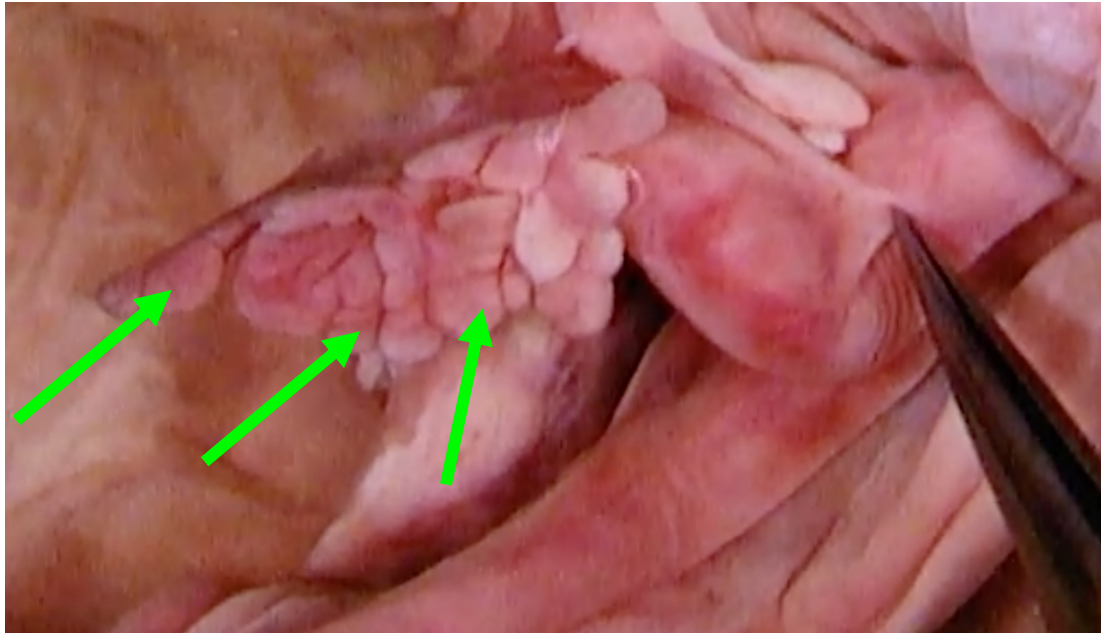
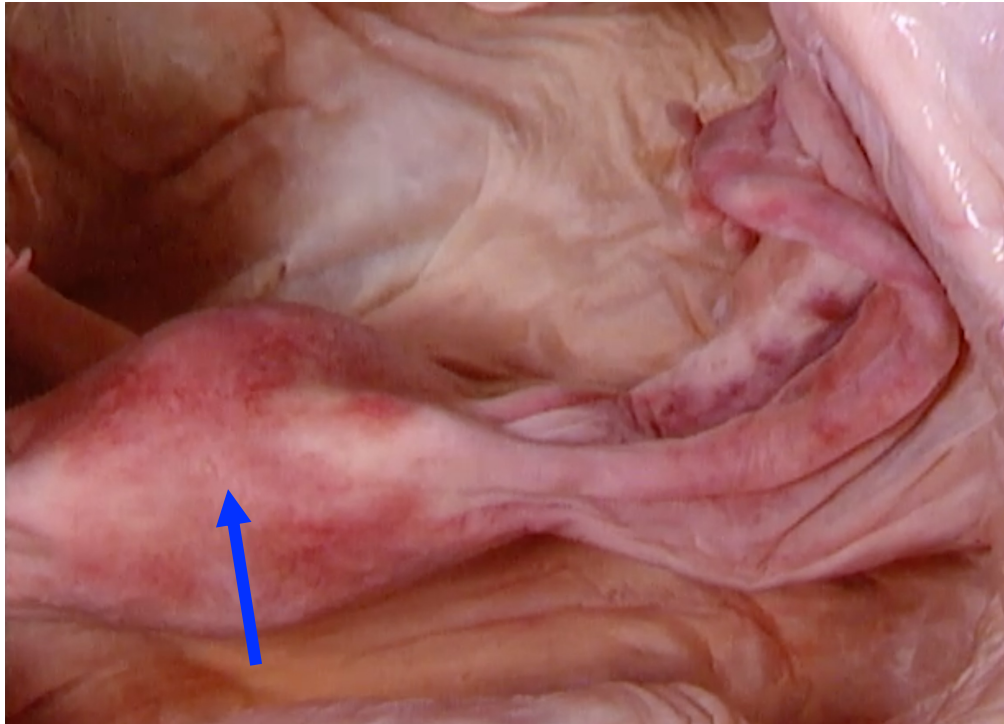


Quiz Section Test 4-AC
Answers are given in red.

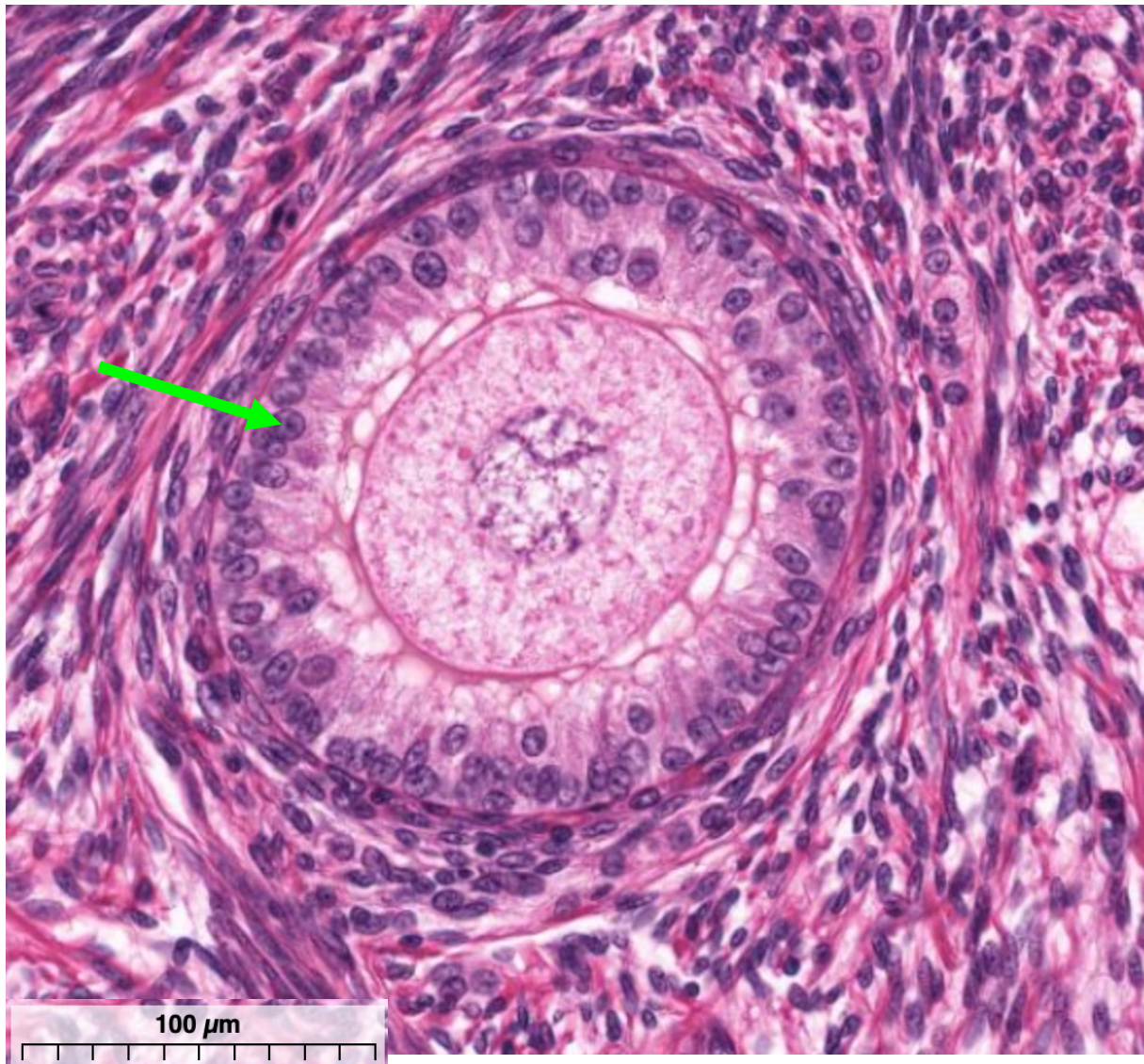


1. The forceps are grasping the uterine tube.
Name the structures indicated by the arrows.

fimbriae

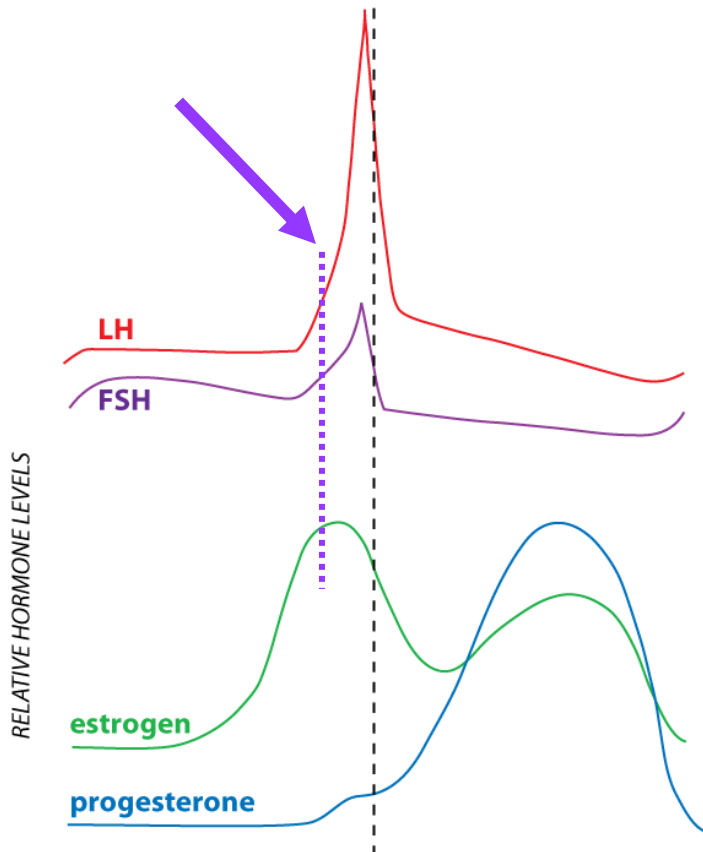


2. What specific part of the uterus is indicated by the arrow?
- a. fundus
 - b. body
 - c. cervix



3. Name the cell indicated by the arrow.

granulosa



4. What is occurring at the time indicated by the purple dotted line?
- ovulation
 - estrogen has a positive feedback effect on gonadotropin secretion**
 - estrogen has a negative feedback effect on gonadotropin secretion
 - the corpus luteum is active

5. Unopposed estrogen is a problem in PCOS in that it stimulates excessive endometrial proliferation. What hormone “opposes” estrogen, and doesn’t get secreted when ovulation doesn’t occur?

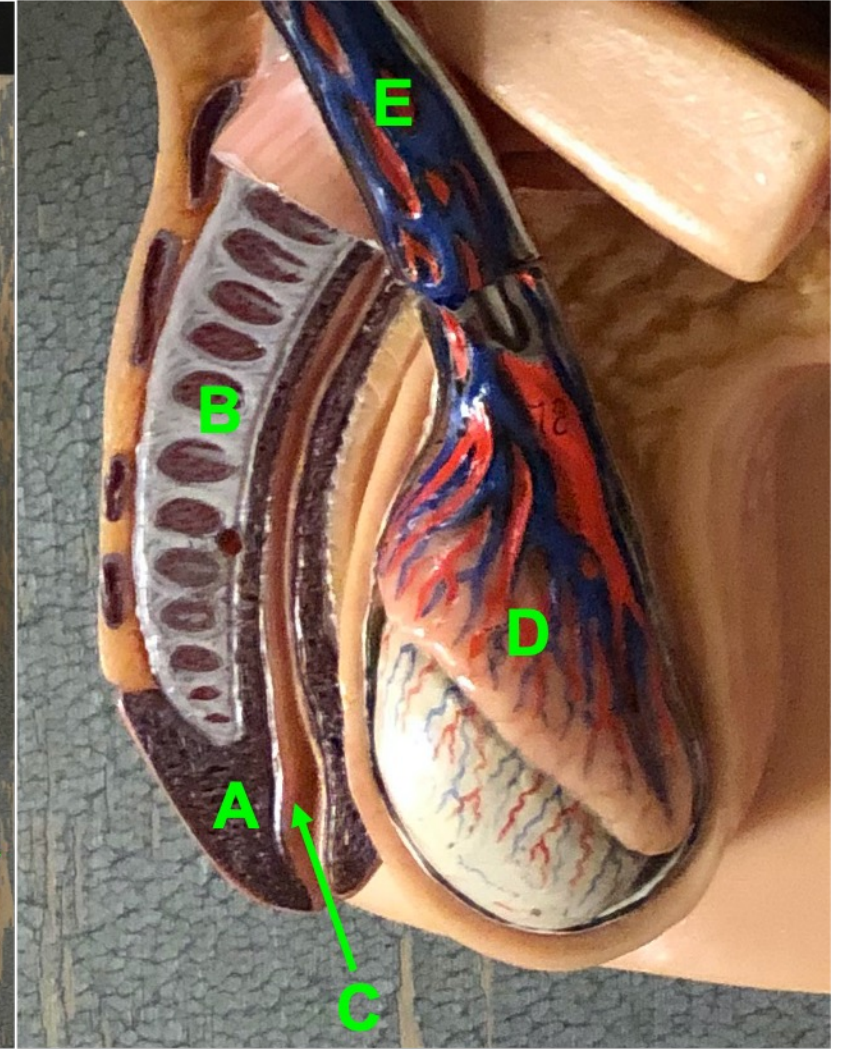
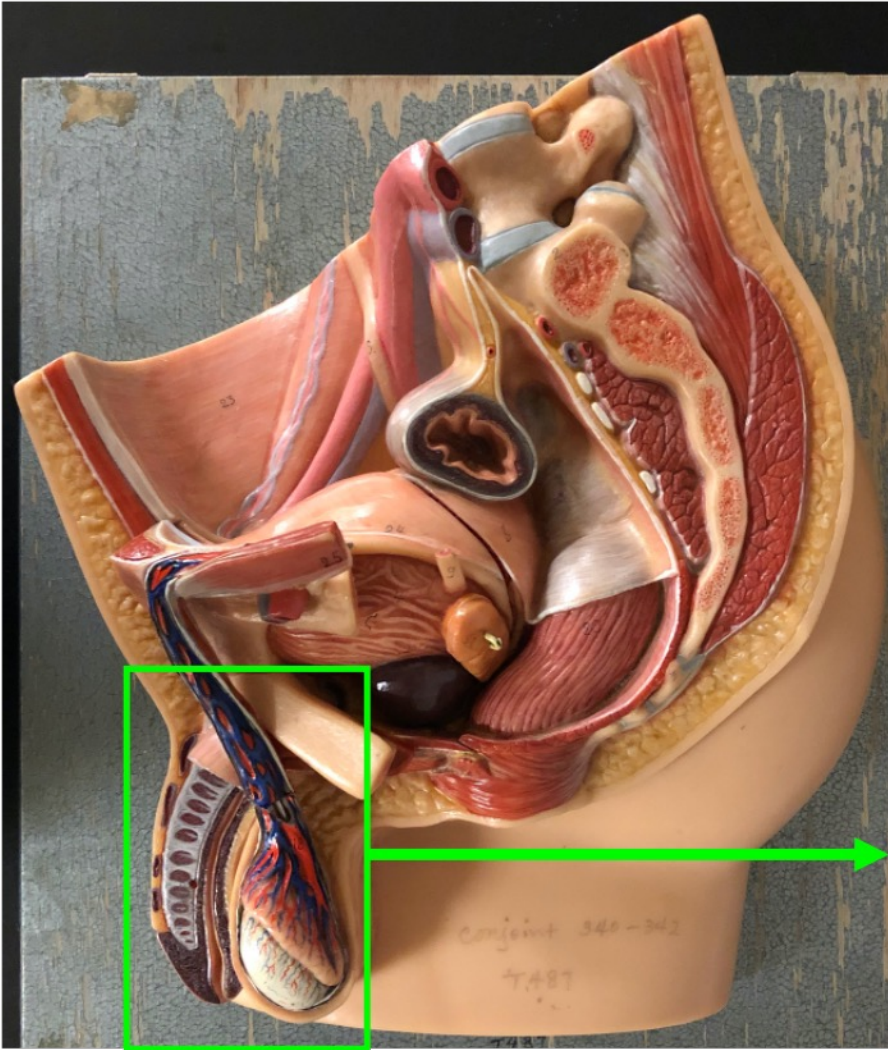
- a. FSH
- b. testosterone
- c. progesterone
- d. insulin
- e. LH

6. Which of the following occurs as a result of treatment with hormonal contraceptives that is helpful in the treatment of PCOS?

- a. decreased LH secretion
- b. reduced androgen synthesis by ovary
- c. decreased endometrial proliferation
- d. decreased risk of endometrial cancer
- e. **ALL of the above occur**

7. Fill in the blank. FSH stimulates _____ cells which are found inside the seminiferous tubule.

- a. Leydig
- b. thecal
- c. Sertoli
- d. granulosa



8. Name the specific structure indicated by the letter C.

penile urethra



9. Name the structure indicated by the arrow.
spermatic cord

10. Erectile dysfunction drugs are phosphodiesterase inhibitors. Which of the following is the intracellular second messenger formed in the vascular smooth muscle of erectile tissues that is broken down by phosphodiesterase?

- a. norepinephrine
- b. cAMP
- c. guanylyl cyclase
- d. nitric oxide (NO)
- e. **cGMP**