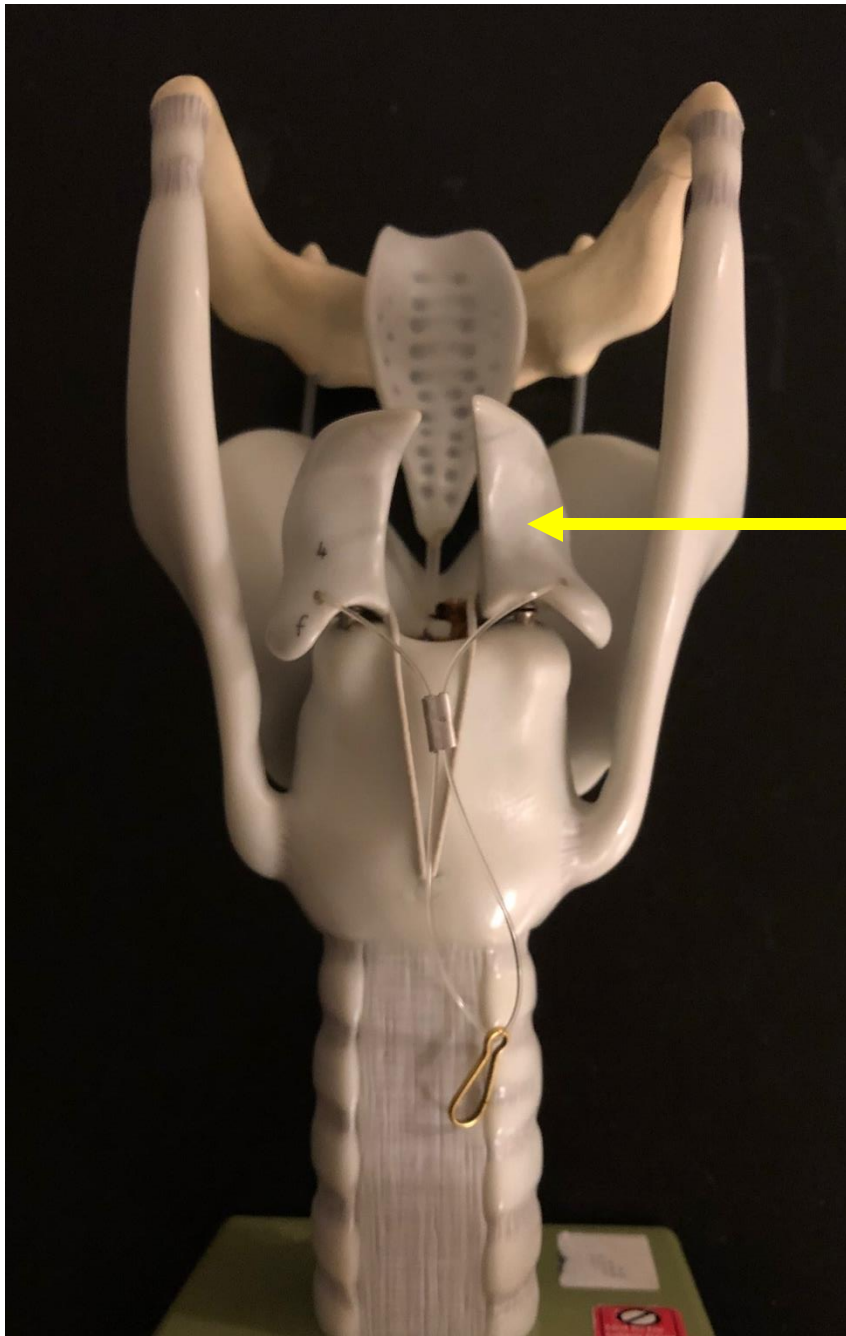
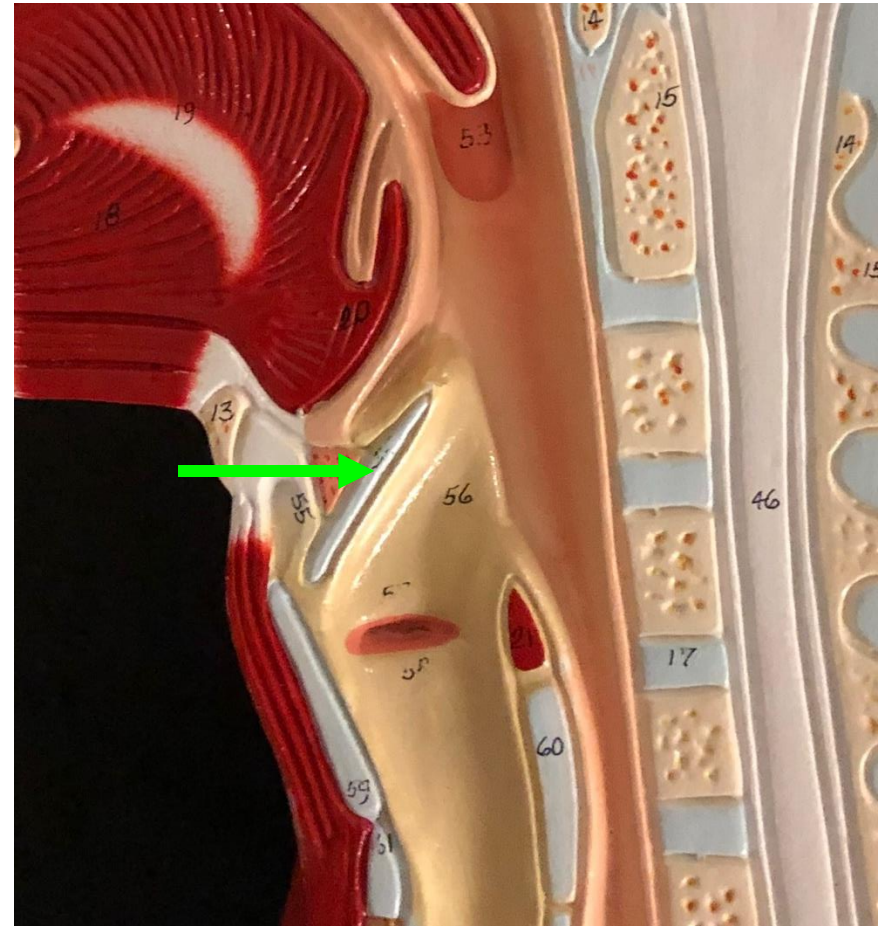
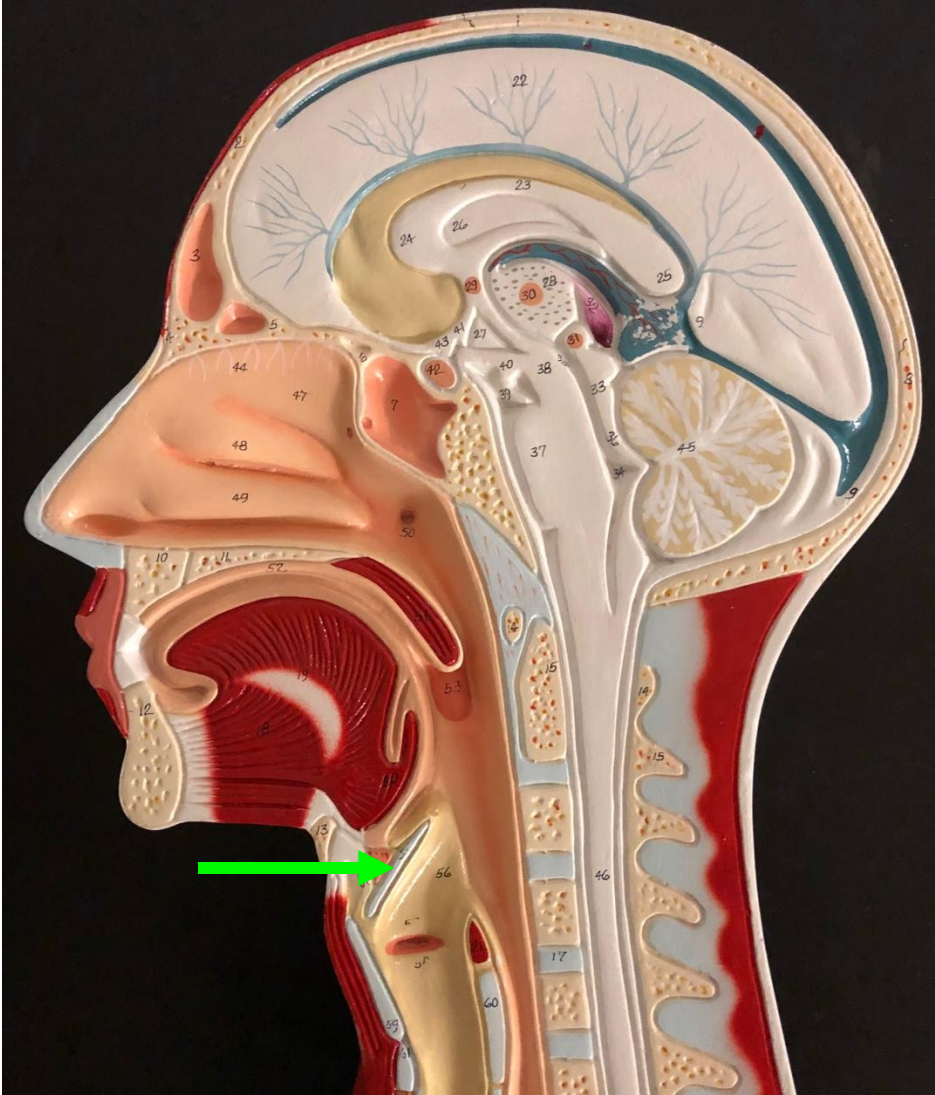


Quiz Section Test 2-AC
Answers are given in red.



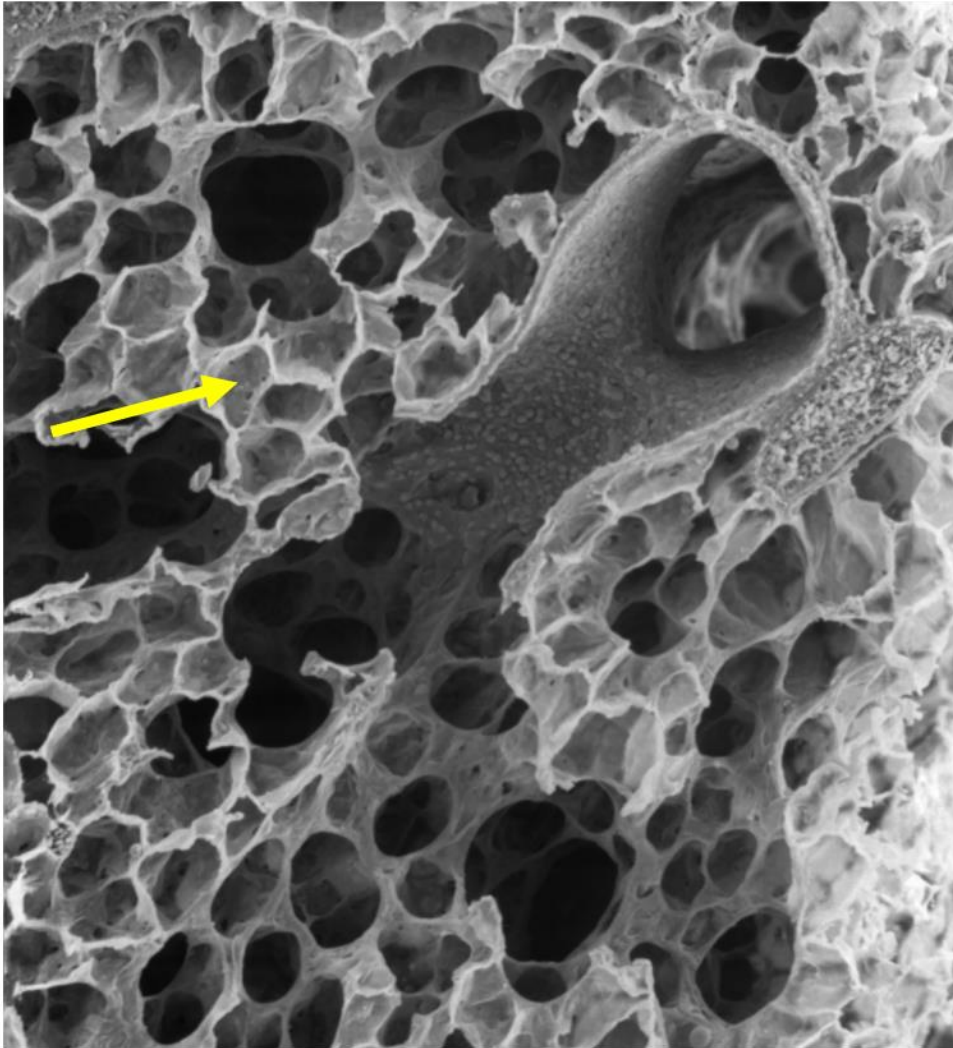
1. Which of the following structures is indicated by the arrow?

- a. thyroid cartilage
- b. cricoid cartilage
- c. arytenoid cartilage
- d. hyoid bone
- e. tracheal cartilage



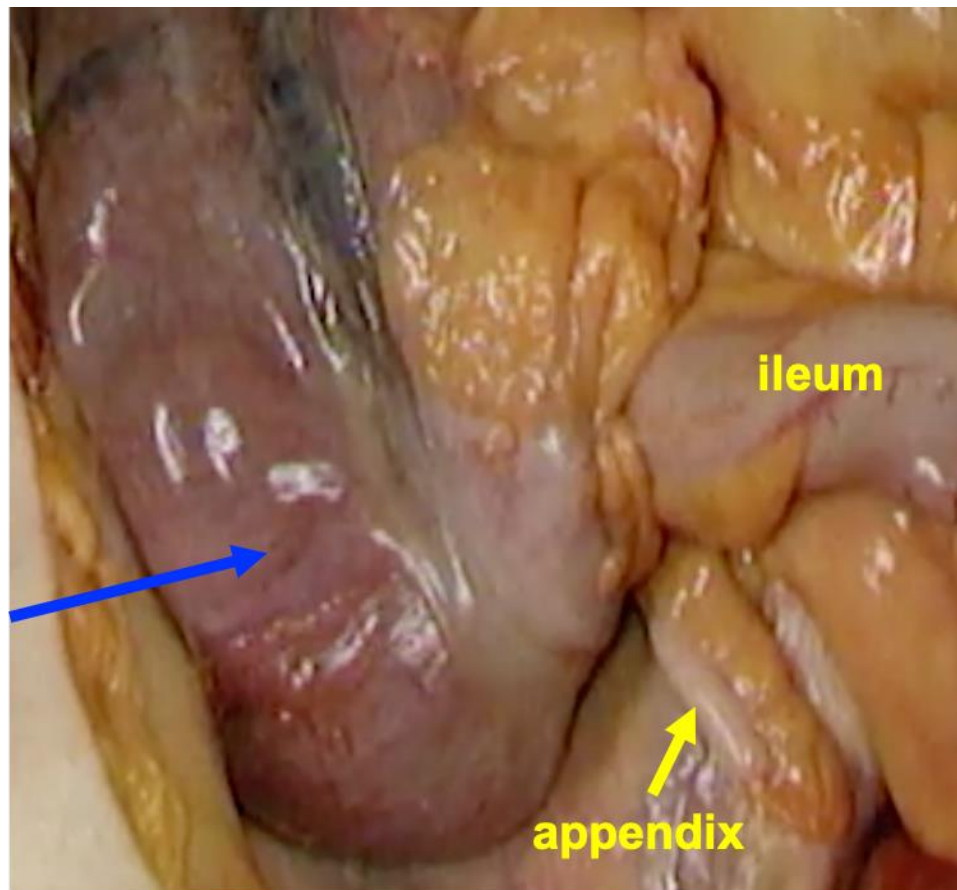
2. Name the structure indicated by the green arrow. This structure plays an important role in swallowing.

epiglottis



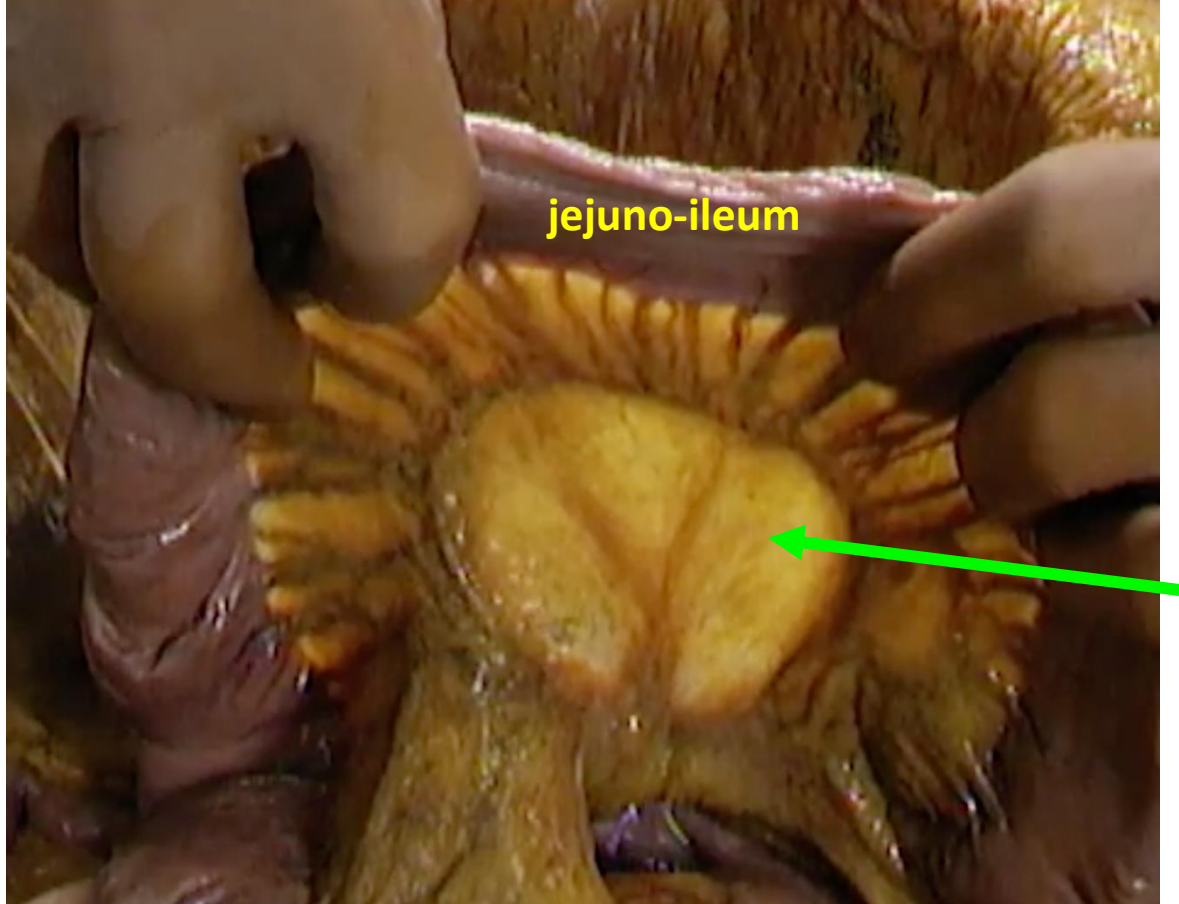
3. Name the structure indicated by the arrow.

alveolus



4. Name the specific region of the large intestine indicated by the blue arrow.

cecum

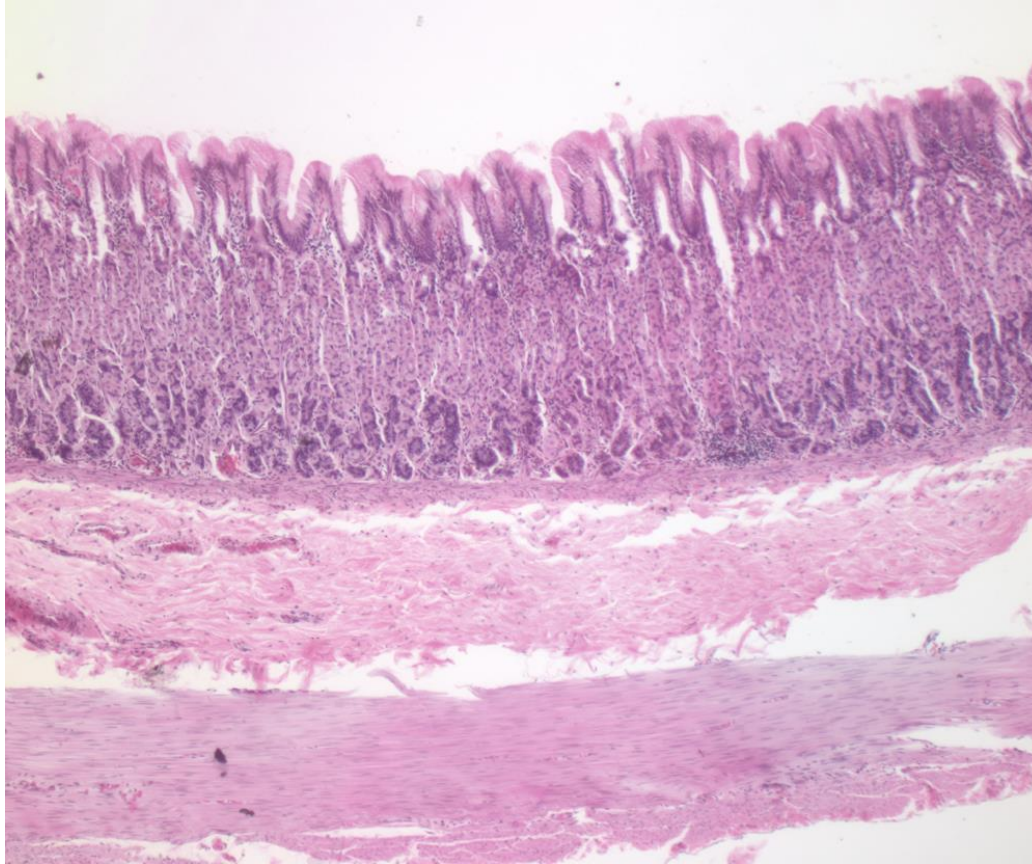


5. Name the structure indicated by the green arrow.

mesentery

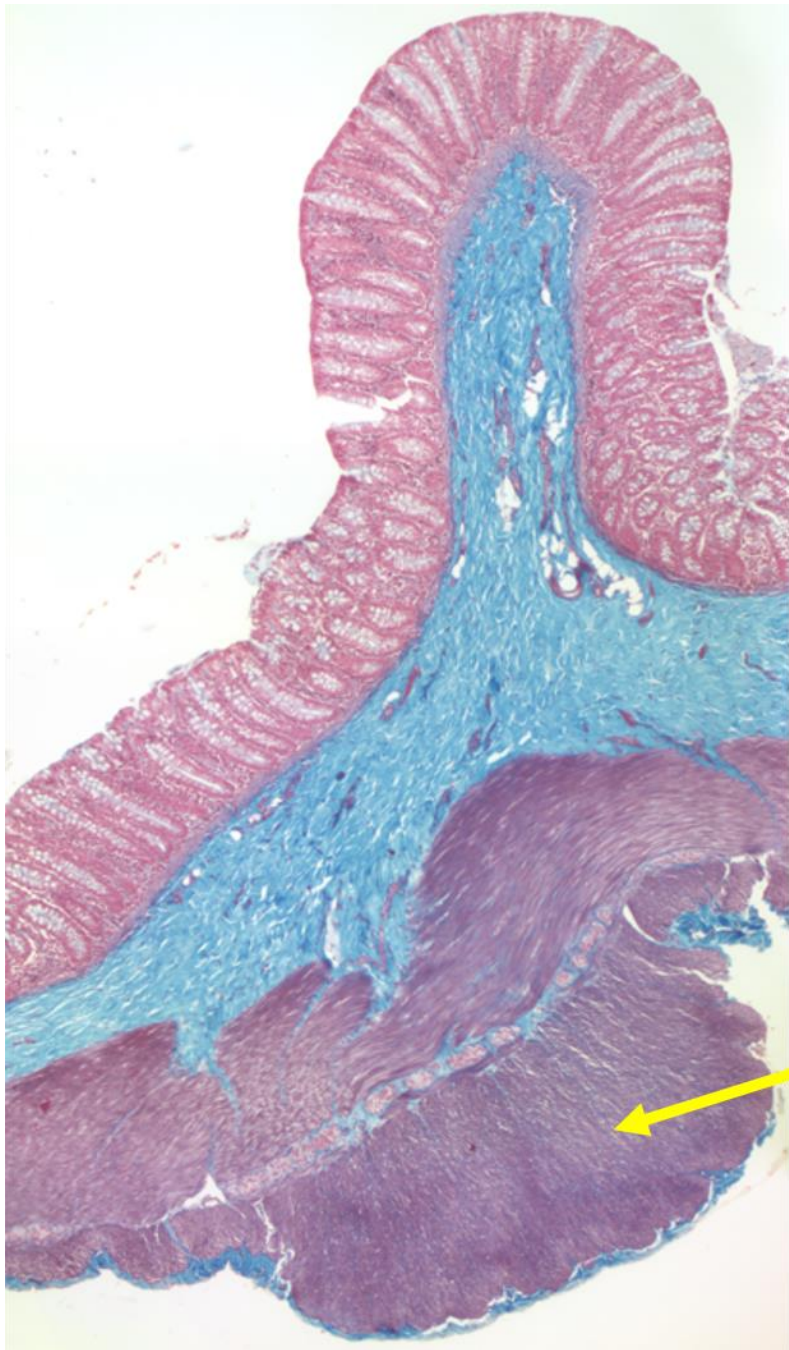
6. Which of the following hormones is an incretin hormone whose secretion *increases* following bariatric surgery? An incretin hormone is a GI hormone that increases insulin secretion.

- a. ghrelin
- b. GLP-1**
- c. PYY



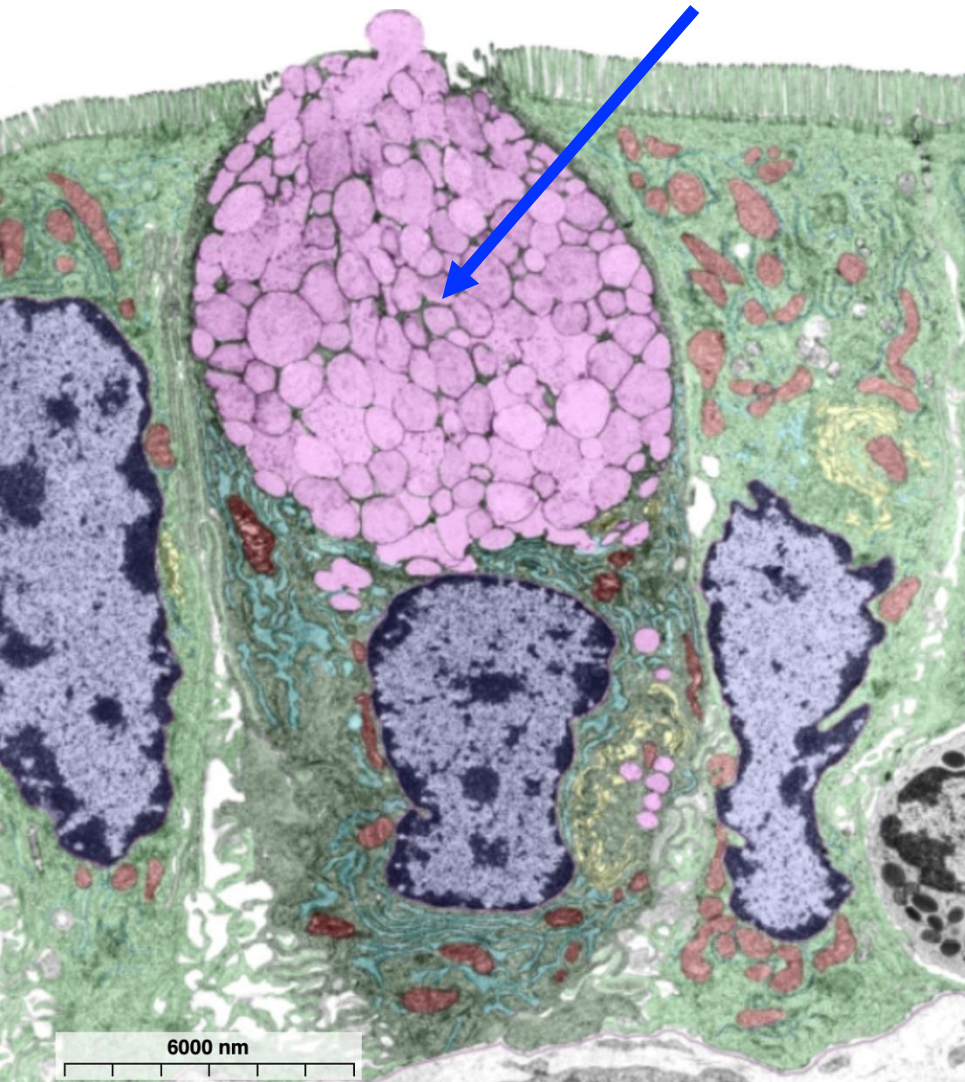
7. Which of the following organs is shown above?

- a. esophagus
- b. stomach**
- c. duodenum
- d. jejunum-ileum
- e. large intestine



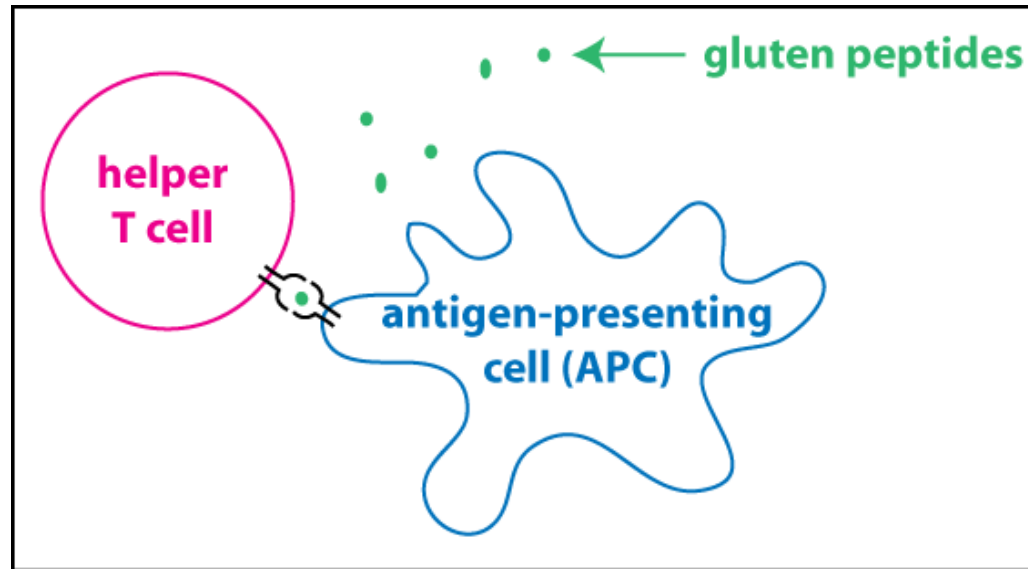
8. Name the structure indicated by the yellow arrow.

tenia coli



9. Which of the following cells is indicated by the blue arrow?

- a. enterocyte
- b. chief cell
- c. parietal cell
- d. goblet cell
- e. airway epithelial cell



10. The figure above shows the cellular interactions that occur in the development of autoimmunity in celiac disease. Where is this occurring?

- a. lumen of small intestine
- b. lamina propria of small intestine**
- c. submucosa of small intestine
- d. lymph node
- e. lumen of stomach