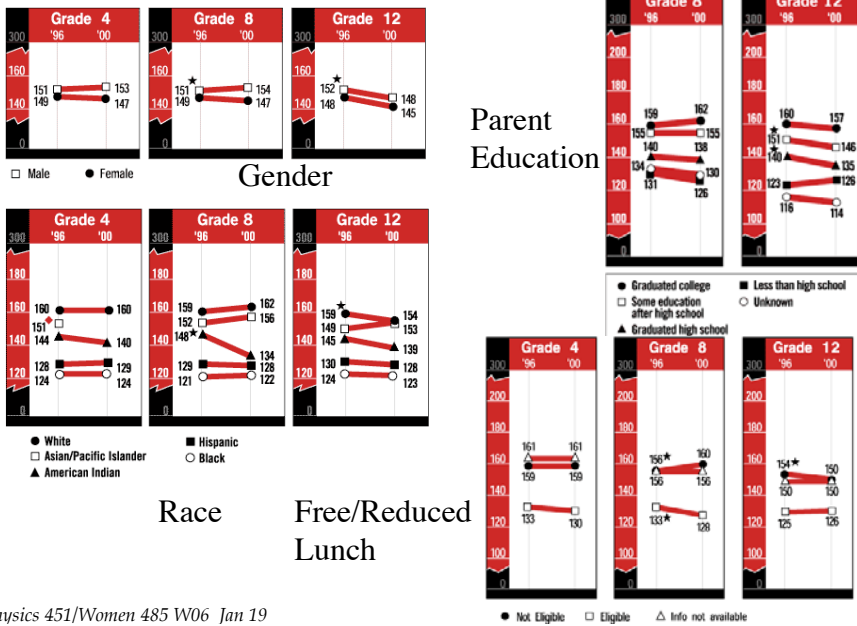


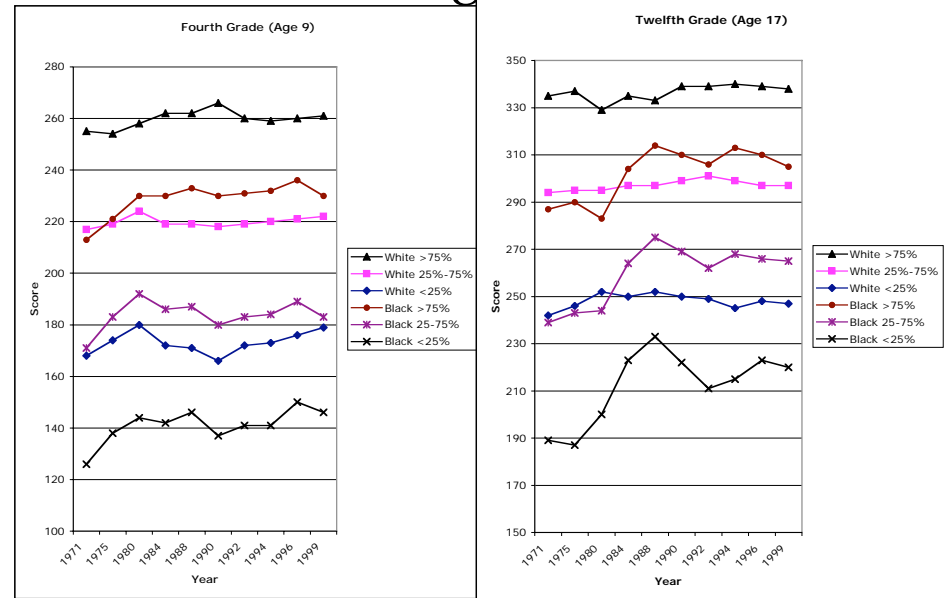
Science Report Card



Physics 451/Women 485 W06 Jan 19

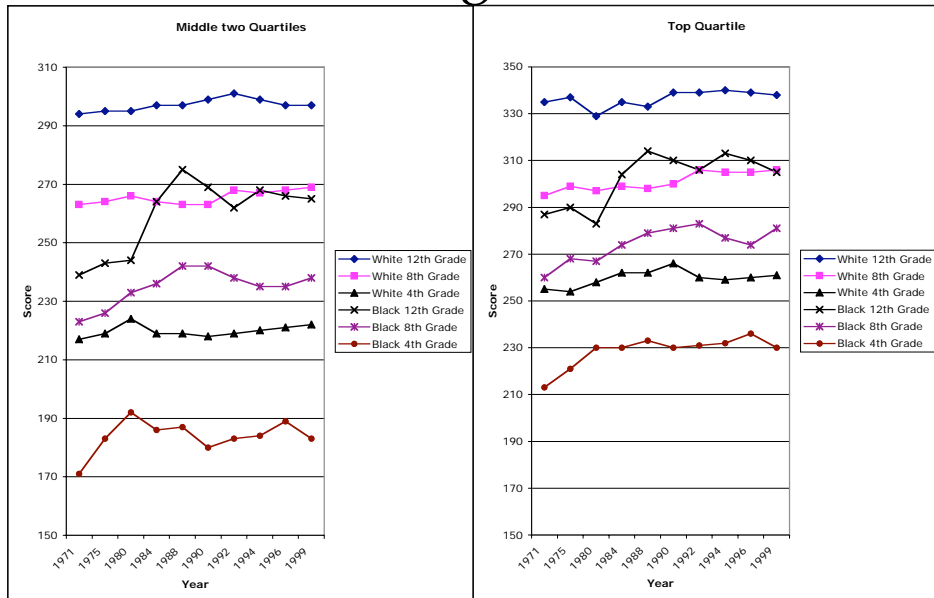
The following are all from the NCES report "The Condition of Education 2002"

Reading Scores



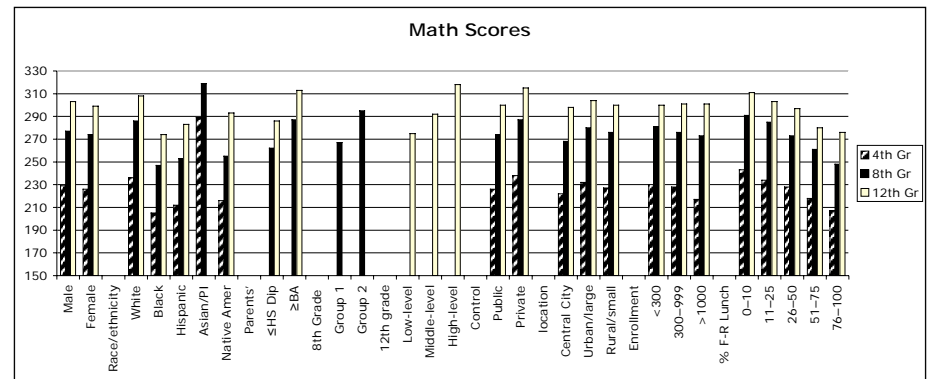
Physics 451/Women 485 W06 Jan 19

Reading Scores



Physics 451/Women 485 W06 Jan 19

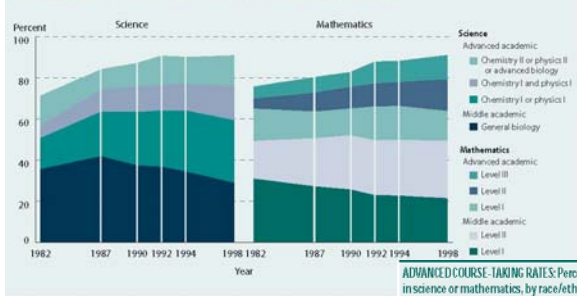
Math Scores



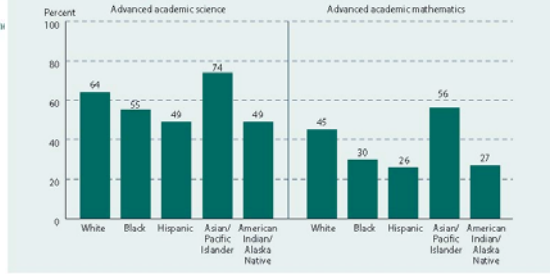
Physics 451/Women 485 W06 Jan 19

Taking Math/Science

COURSE-TAKING LEVELS: Percentage of high school graduates who completed middle or advanced level science and mathematics courses, by level of highest course completed. Selected years 1982 to 1998

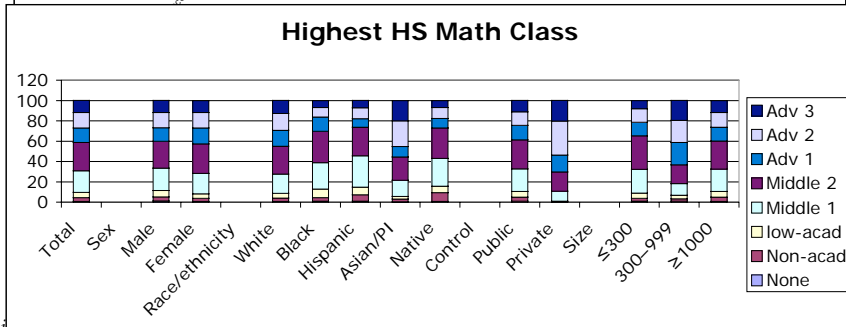
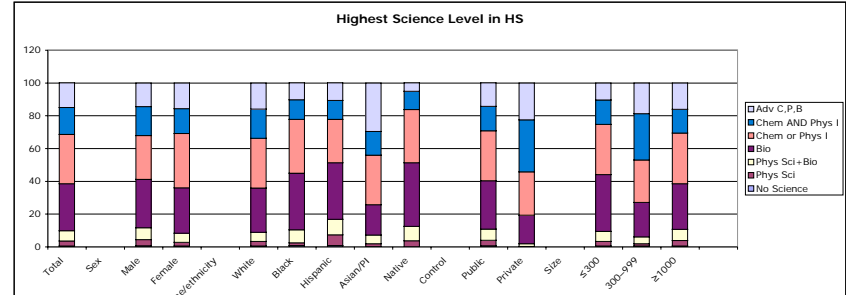


ADVANCED COURSE-TAKING RATES: Percentage of high school graduates who completed some advanced level coursework in science or mathematics, by race/ethnicity, 1998



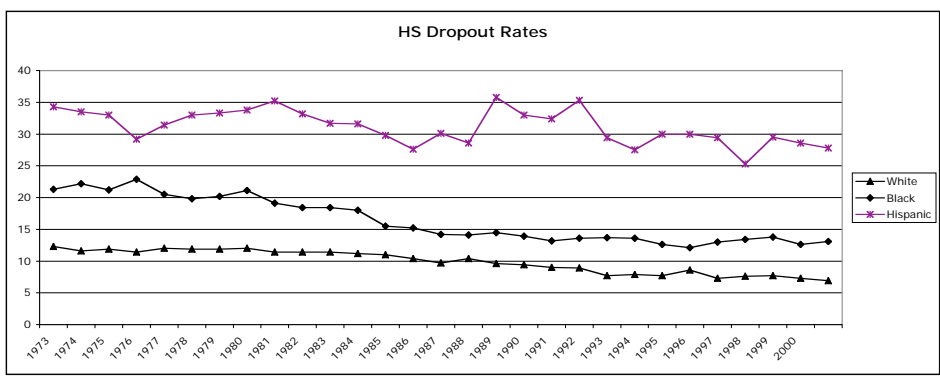
Physics 451/Women 485 W06 Jan 19

HS Science/Math Courses



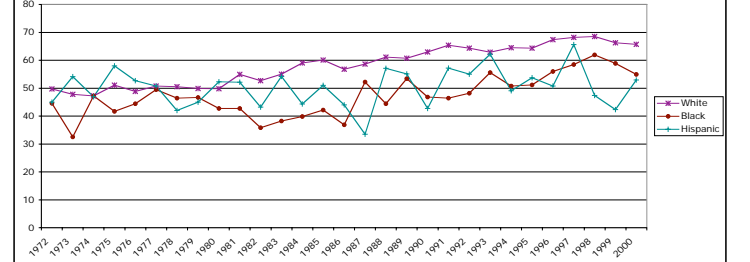
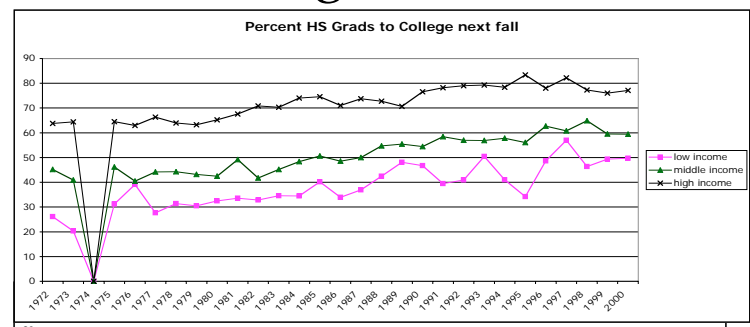
Physi

HS Dropout Rates



Physics 451/Women 485 W06 Jan 19

College Next Fall



Physics 451/Women 485 W06 Jan 19

Poverty Impact-1

School and teacher characteristics	Students in school eligible to receive free or reduced-price lunch					Total population
	10 percent or less	11-25 percent	26-50 percent	51-75 percent	More than 75 percent	
Academic orientation						
Average student attitude in school toward achievement						
Very positive	79.5	45.7	34.1	27.9	28.5	43.5
Somewhat positive	20.5	54.3	65.9	61.5	65.3	53.2
Somewhat/very negative	0.0	0.0	0.0	10.6	6.2	3.3
Teacher characteristics						
Teacher is certified in elementary mathematics*						
Yes	27.1	39.6	37.6	31.2	22.0	30.3
No	44.1	38.6	38.8	51.7	63.7	47.7
Number of years spent teaching mathematics						
2 years or less	12.9	11.9	13.0	14.1	15.5	14.0
3-5	17.7	14.4	13.9	22.5	17.0	17.1
6-10	11.2	13.4	23.3	20.0	19.3	18.0
11 or more	58.2	60.3	49.9	43.4	48.2	50.9
School climate and discipline						
Physical conflicts in school among students						
Serious/moderate	2.3	9.5	11.0	21.5	22.0	12.7
Minor	50.8	43.1	66.9	54.4	65.3	56.3
Not a problem	46.9	47.4	22.1	24.1	12.7	31.0
Percentage of students absent on a given day						
0-2	49.5	22.2	26.9	25.8	12.7	27.8
3-5	50.5	73.3	57.3	64.2	65.1	61.5
More than 5	0.0	4.5	15.8	10.0	22.2	10.7
Percentage of teachers who left before the end of the school year						
0	94.1	89.5	69.1	70.6	64.2	76.9
1-2	5.9	9.2	21.9	25.2	30.5	19.2
More than 3	0.0	1.4	9.0	4.2	5.3	3.9
Enrollment						
Less than 300	15.0	7.4	14.0	13.5	17.3	13.7
300-1,000	84.3	87.6	83.7	82.9	73.5	82.1
More than 1,000	0.7	5.0	2.3	3.6	9.2	4.2
Type of location						
Central city	9.3	20.7	30.7	27.1	56.2	29.9
Urban fringe/large town	72.7	57.9	39.6	29.1	26.1	45.6
Rural/small town	18.0	21.3	29.7	43.8	17.7	24.5

See footnotes at end of table.

Physics

Poverty Impact-2

Poverty and Student Achievement

Table 11-2 Percentage of 4th-grade students in the school eligible for free or reduced-priced lunch, by selected school and teacher characteristics of public schools: 2000—Continued

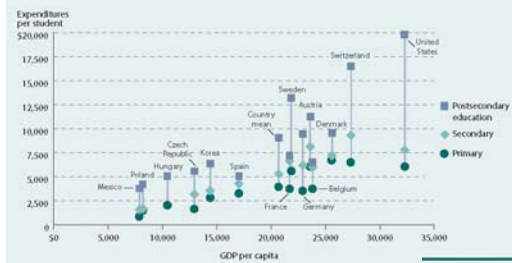
School and teacher characteristics	Students in school eligible to receive free or reduced-price lunch					Total population
	10 percent or less	11-25 percent	26-50 percent	51-75 percent	More than 75 percent	
School resources and social support						
Percentage of parents who participate in open-house or back-to-school night						
0-50	5.2	12.7	17.7	23.7	29.2	17.4
51-75	11.5	12.2	38.9	45.8	29.1	28.1
More than 75	83.3	75.1	43.4	30.6	41.7	54.5
Percentage of parents who participate in parent-teacher organizations						
0-25	21.0	29.8	61.6	68.9	70.5	50.2
26-50	18.7	32.0	18.8	20.6	24.3	22.9
More than 50	60.3	38.2	19.6	10.6	5.2	26.9
Percentage of parents who participate in parent-teacher conferences						
0-50	1.1	1.0	9.0	19.5	21.5	10.1
51-75	1.7	18.0	23.1	30.1	27.1	19.6
More than 75	97.2	81.0	67.9	50.4	51.4	70.3
Percentage of students who received Title I funds						
0-10	92.2	76.0	55.2	17.0	1.2	48.7
11-25	7.8	19.7	26.3	9.9	11.3	14.5
26-50	0.0	4.4	11.4	10.9	7.5	6.7
51-75	0.0	0.0	0.0	9.0	1.3	2.0
More than 75	0.0	0.0	7.2	53.2	78.6	28.1

*Details do not add to 100.0 because the questionnaire also included a category for "certification not offered in the state."
NOTE: See Supplemental Note 2 for more information on the National Assessment of Educational Progress (NAEP).
SOURCE: U.S. Department of Education, NCES, National Assessment of Educational Progress (NAEP), unpublished data provided by the Educational Testing Service, 2003.

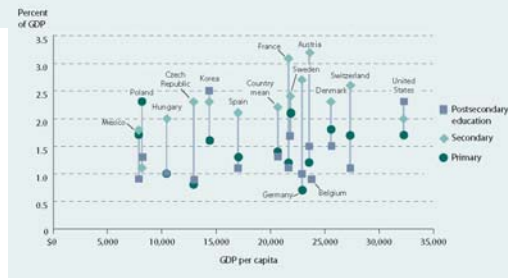
Physics 451/Women 485 W06 Jan 19

International Spending

INTERNATIONAL EXPENDITURES FOR EDUCATION: Educational expenditures per student in relation to GDP per capita, by level of education for selected OECD countries: 1998

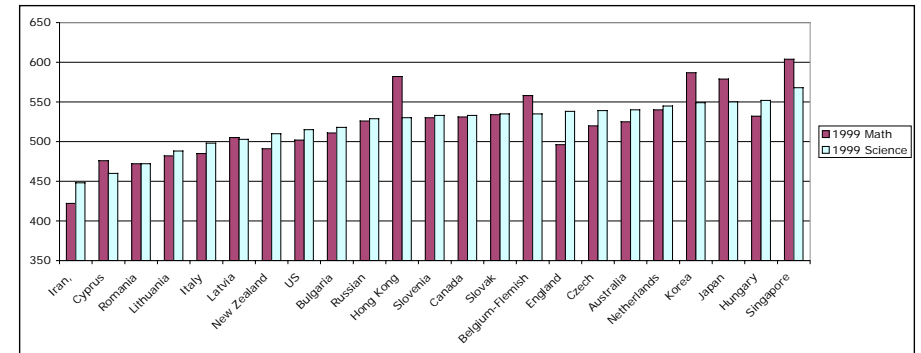


INTERNATIONAL EXPENDITURES FOR EDUCATION: Educational expenditures as a percentage of GDP, by GDP per capita and level of education for selected OECD countries: 1998



Physics 451/Women 485 W06 Jan 19

International Math/Science



8th Grade

Physics 451/Women 485 W06 Jan 19