

Post-Graduate Opportunities

Steve Fijalka, Pharm.D.

Assistant Director, Pharmacy

University of Washington Medical
Center/Seattle Cancer Care Alliance

Basic Definitions

- *Residency*: A structured, directed, salaried, postgraduate training program in a defined area of pharmacy practice, typically lasting one year.
- *Postgraduate Year One (PGY1) Residency*: PGY1 residency training is an organized, directed, accredited program that builds upon knowledge, skills, attitudes, and abilities gained from an accredited professional pharmacy degree program. The PGY1 program enhances general competencies in managing medication-use systems and supports optimal medication therapy outcomes for patients with a broad range of disease states.

Basic Definitions Continued

- *Postgraduate Year Two (PGY2) Residency:* PGY2 residency training is an organized, directed, accredited program that builds upon the competencies established in PGY1 training. The PGY2 program is focused in a specific area of practice. The PGY2 program increases the resident's depth of knowledge, skills, attitudes, and abilities to raise the resident's level of expertise in medication therapy management and clinical leadership in the area of focus.
- *Fellowship:* A directed, highly individualized, postgraduate program designed to prepare the participant to become an independent researcher.

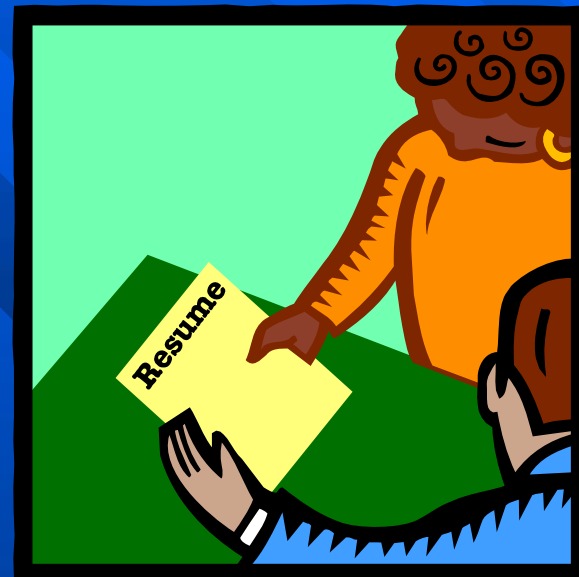
Why Complete a Residency?

- A competitive advantage in the job market
- Networking opportunities
- Career planning
- Professional vision
- Other



Candidate Qualifications

- Communication skills (written and verbal)
- Leadership ability (enthusiasm for the profession)
- Decision-making skills
- Work experience
- Unique rotations and clerkships
- Grades
- Research
- Presentations
- Community Service
- Student organizations
- Well rounded



Seeking a Residency

- 2000 Match results:

 - 1074 applicants signed up for Match

 - 703 applicants returned rankings

 - 697 positions available

- 2005 Match results:

 - 1407 applicants signed up for Match

 - 1079 applicants returned rankings

 - 1072 positions available

Selecting a Residency Program

- Is the program accredited?
- Quality/Reputation
- Patient populations served
- Teaching opportunities
- Service (staffing) expectations
- Work environment
- Projects/Presentations
- Competition for the program
- Location



Postgraduate Year One Residencies in Washington

- Central Washington Hospital
- Children's Hospital & Regional Medical Center
- Deaconess Medical Center
- Franciscan Health System
- Good Samaritan Hospital
- Highline Community Hospital
- International Community Health
- Madigan Army Medical Center
- Mutlicare Health System
- Group Health Coop – *Managed Care*
- Sacred Heart Medical Center/WSU
- Southwest Washington Medical
- St. Joseph Hospital Peace Health
- Swedish Medical Center
- UWMC/HMC
- UW School of Pharmacy – *Community Pharmacy*
- VA Puget Sound Health Care
- Valley Medical Center
- Virginia Mason Medical Center
- Yakima Valley Memorial Hospital

Next Steps

- Prepare your checklist
- Prepare your CV
- Do your homework
- Attend annual meeting(s)
- Apply for the Match
- Is a PGY2 Residency in your future?



Example Checklist

September	Submit match application	ᵇ
	Prepare CV & cover letters	ᵇ
October	Review residency directories	ᵇ
	Register Midyear meeting	ᵇ
	Make travel arrangements	ᵇ
December	Attend Midyear	
	Request letters of recommendation	
	Complete applications	
	Schedule interviews	
January	On-site interviews	
	National Match Service agreement	
March	Submit Rank Order	
	Receive Match results	
July	Begin Residency	

Prepare your CV

- Cover Letter
- CV Basics:
 - Education
 - Clerkship Rotations
 - Presentations and Publications
 - Honors and Awards
 - Organizational Memberships
 - Professional and Community Service
 - Other Special Experiences and Skills
- DO NOT INCLUDE PERSONAL INFORMATION



Do Your Homework

- Talk to your preceptors and faculty
- Review on line directories
- Talk to current program residents
- Check out the area
- Request informational packets from programs



ASHP Matching Program

- Formalized process conducted by a national matching service to match residents with residency programs.
- Both applicant and program submit rank order list
- While match is not legally binding...
- Results come out in March
- Residency Showcase (s)
- *New for 2007, PGY2 Programs participate in the Match.

Postgraduate Year Two Residencies

- Ambulatory Care
- Cardiology
- Pharmacokinetics
- Critical Care
- Drug Information
- Emergency Medicine
- Geriatrics
- Infectious Disease
- Informatics
- Internal Medicine
- Managed Care
- Medication Safety
- Nuclear Pharmacy
- Nutrition Support
- Oncology
- Pediatrics
- Pharmacotherapy
- Pharmacy Practice Management
- Psychiatric
- Solid Organ Transplant

Postgraduate Year Two Residencies in Washington

- Sacred Heart Medical Center – Critical Care
- UWMC/HMC/SCCA - Oncology Pharmacy
- UWMC/HMC - Critical Care
- UWMC/HMC - Ambulatory Care
- UWMC/HMC – Pharmacy Practice Management/Masters in Health Administration (26 months)

Fellowships

- Exist primarily to develop competency in the scientific research process
- Usually work closely with one preceptor
- The fellow receives a highly individualized experience
- Typically offered through colleges of Pharmacy
- Set time often 12 to 24 months

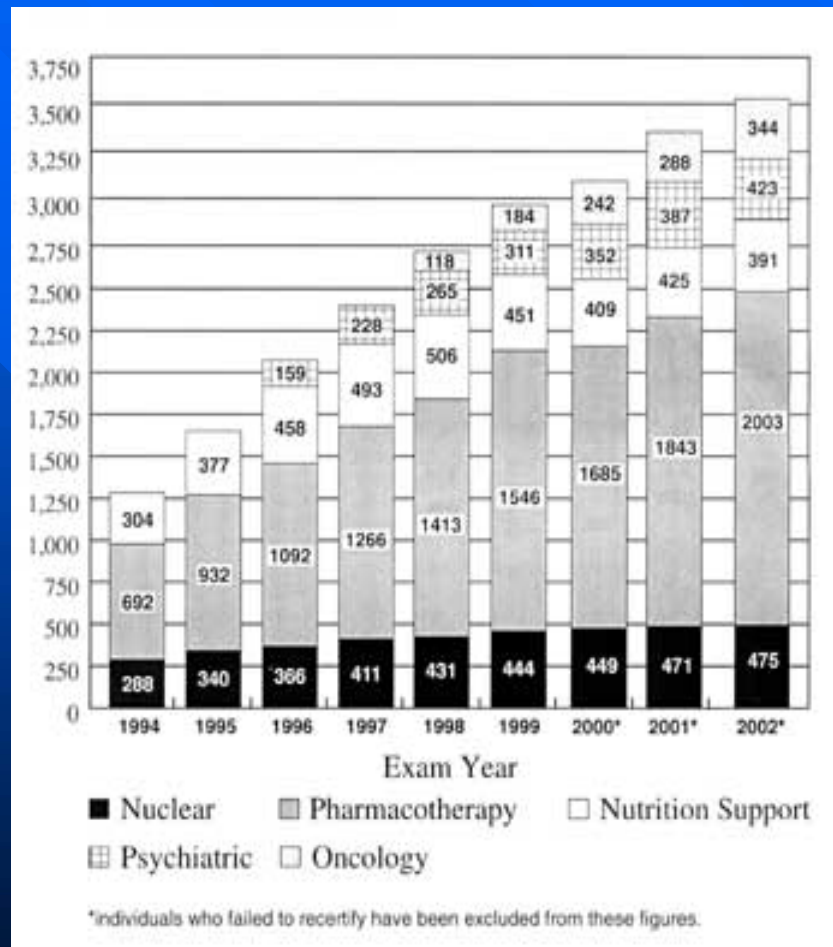
Fellowships in Washington

- Geriatric - Washington State University/Elder Services
- Pharmacokinetics/Pharmacodynamics - University of Washington
- Transplantation/Immunology - University of Washington
- Women's Health/Obstetric-Fetal Pharmacology - University of Washington

Board Certification

- Currently, the Board of Pharmaceutical Specialties recognizes five specialty areas of Pharmacy:
- Nuclear Pharmacy
- Nutrition Support Pharmacy
- Oncology Pharmacy
- Pharmacotherapy
- Psychiatric Pharmacy

Pharmacists Certified by the Board of Pharmaceutical Specialties



FAQ's about Board Certification

- Way of demonstrating that an individual possesses a certain high level of knowledge.
- Most significant value to individual is improved feelings of self-worth and competence.
- Some employers attach tangible value to BPS certification.
- Exams given generally once a year at the same time.
- Length of certification is 7 years.
- Maintaining certification.
- Must have a degree from Pharmacy program AND experience.
- Many ways to study for exam (prep course, study groups, PSAP, etc.).

Additional Resources

- ASHP Website: www.ashp.org
- APhA Website: www.aphanet.org
- ACCP Website: www.accp.com
- Your preceptors, faculty and co-workers!