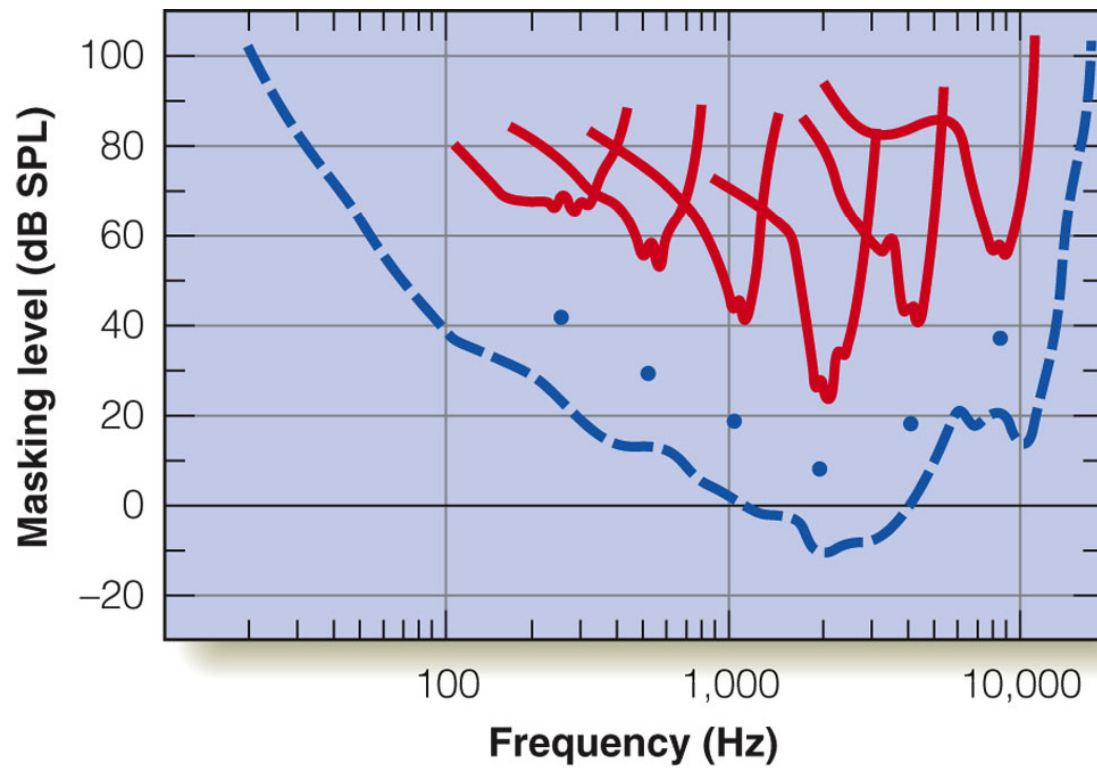


Auditory masking functions: estimating tuning functions of underlying frequency selective 'mechanisms'



Contrast discrimination (masking) experiment

10% contrast target



10% contrast masker



Mask

Target + Mask



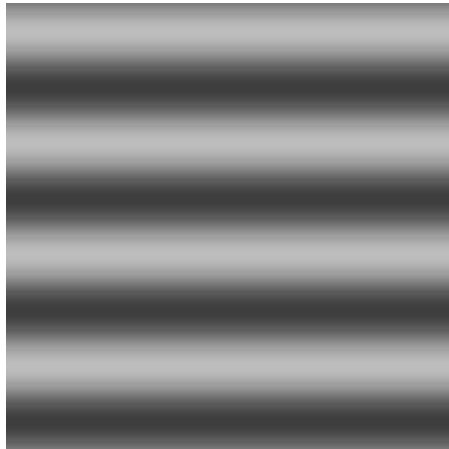
Contrast discrimination (masking) experiment

10% contrast target

50% contrast masker



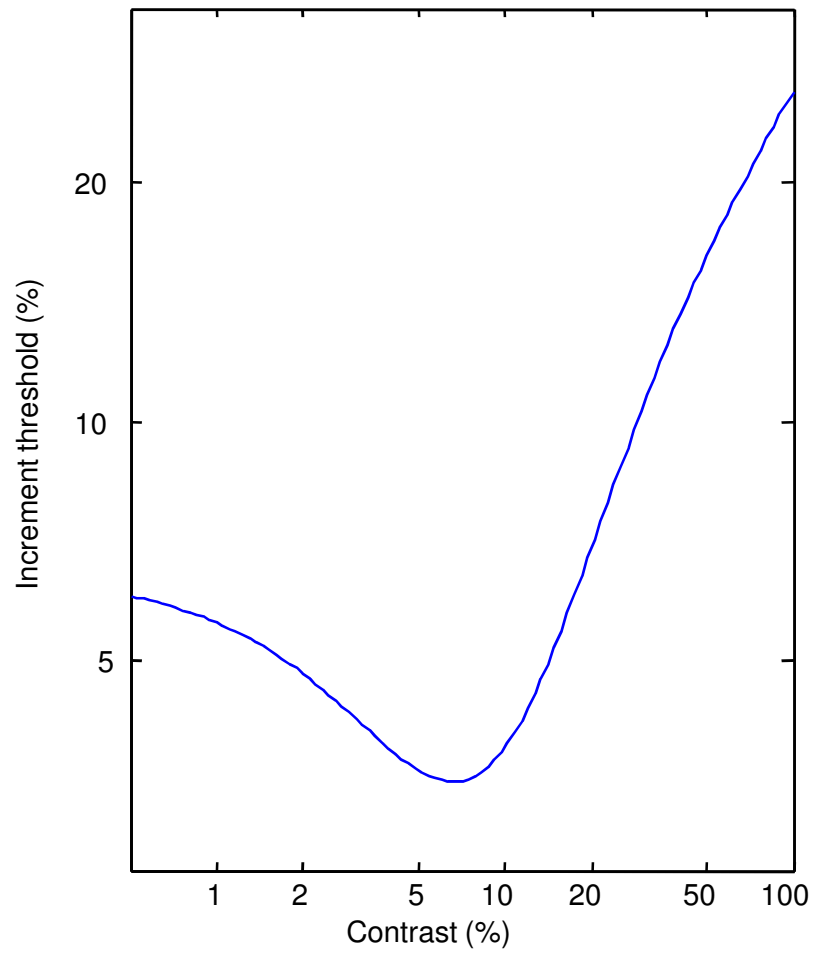
Mask



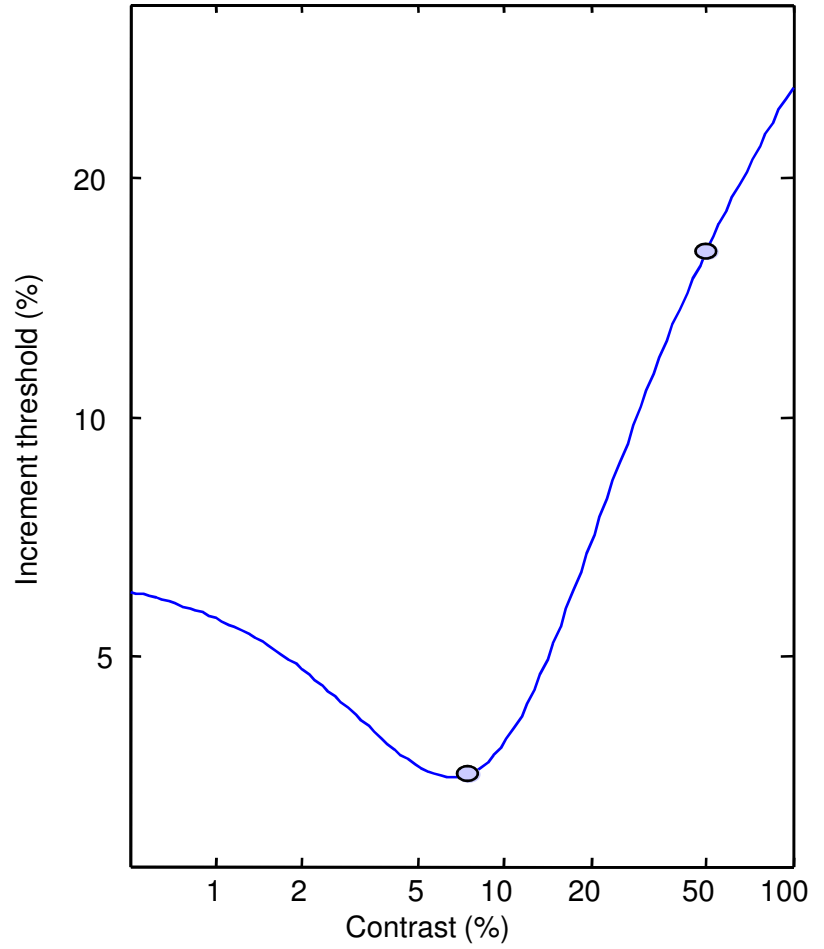
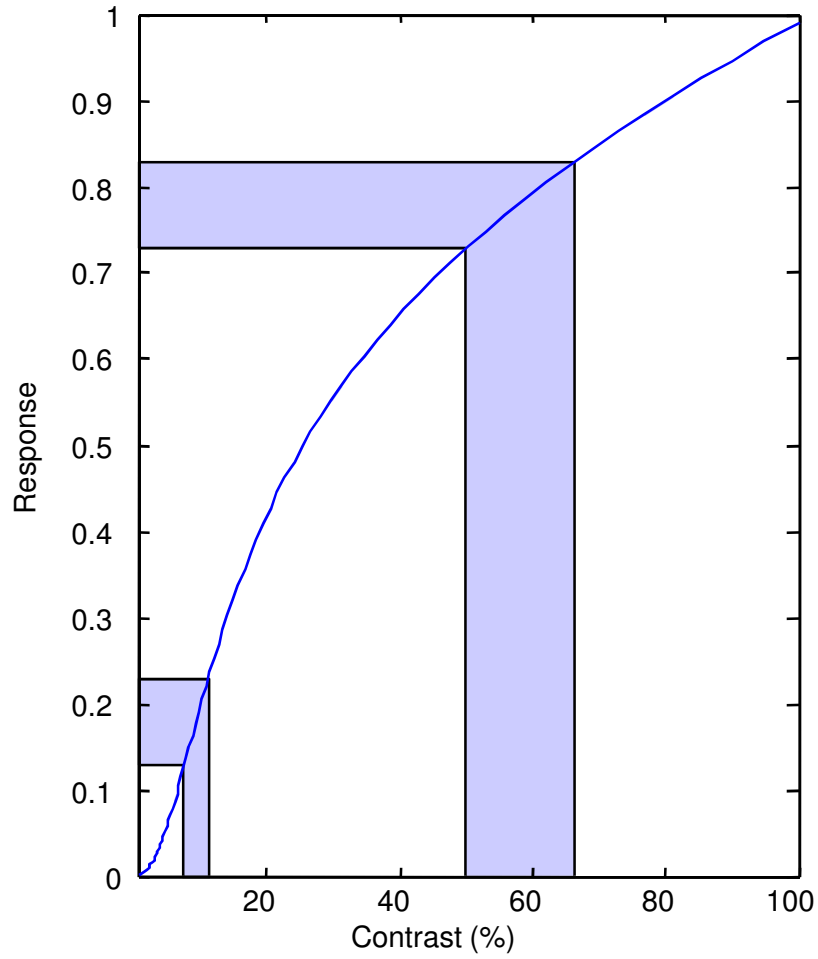
Target + Mask



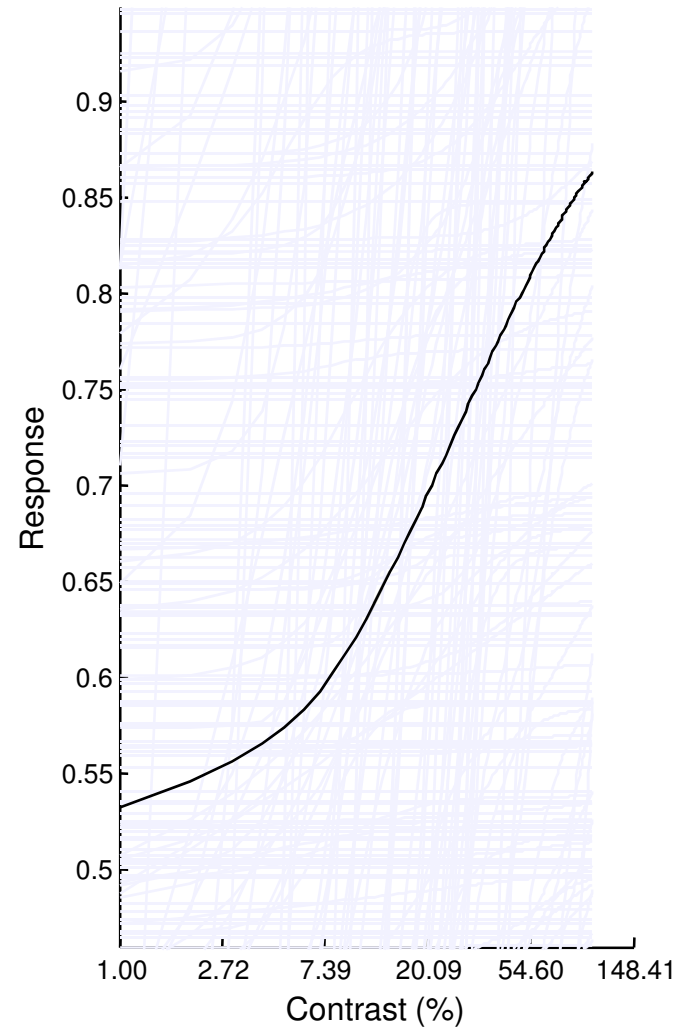
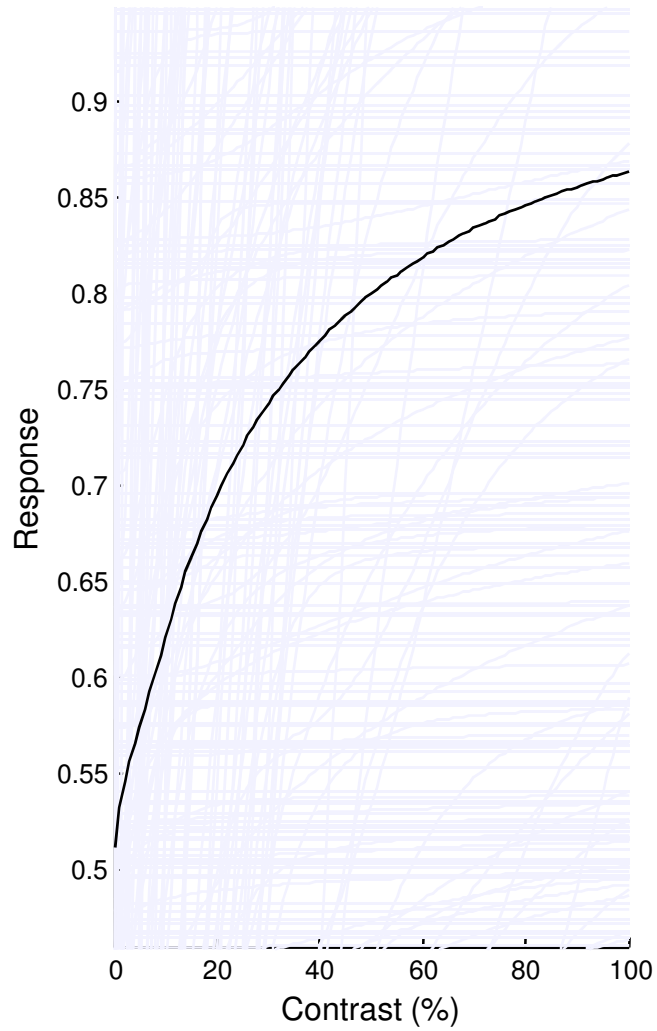
Contrast discrimination as a function of base contrast:
The 'Dipper Function'



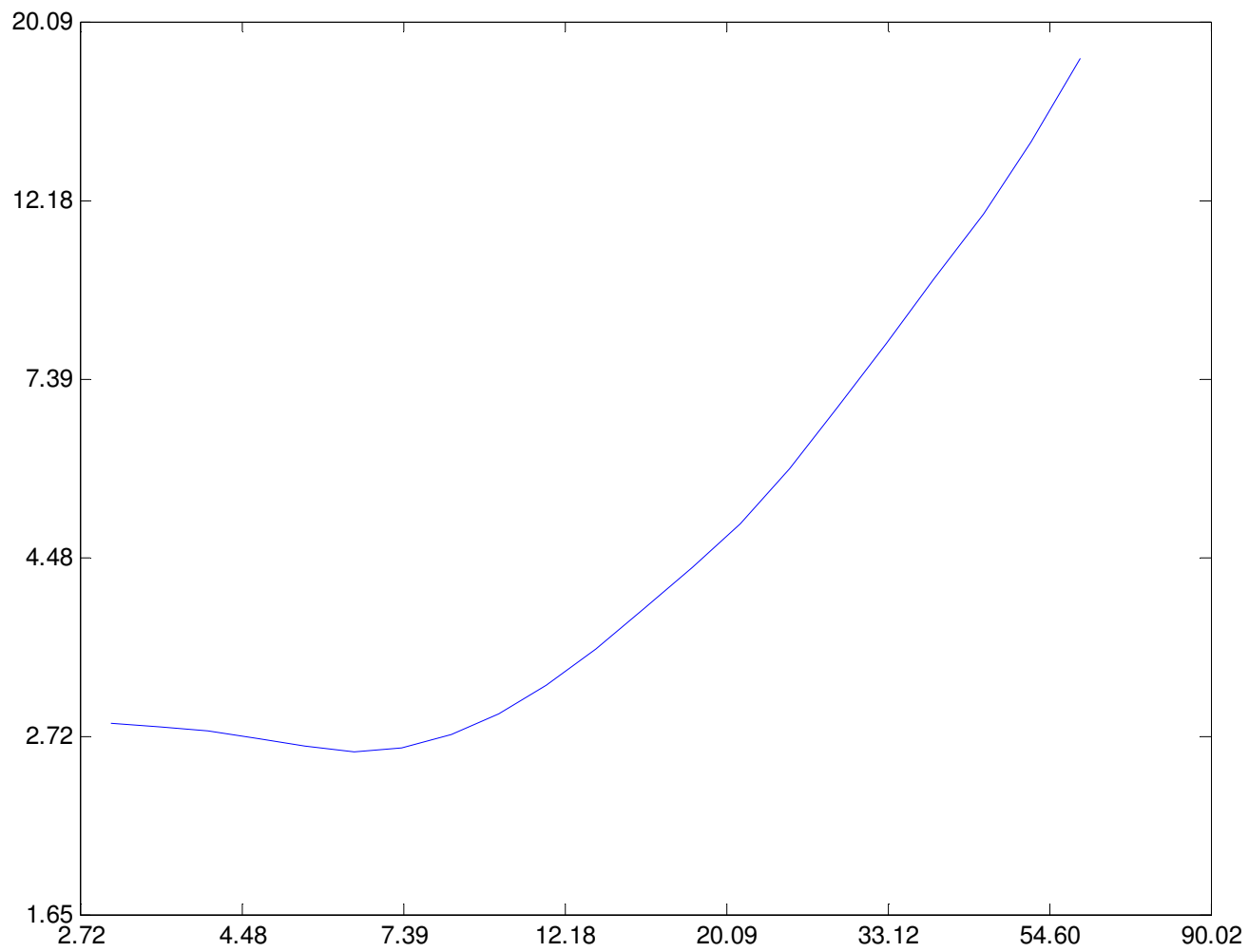
The 'Weber-Fechner' explanation for the dipper function



Estimated contrast-response function based on average V1 responses from Geisler and Albrecht



Predicted contrast discrimination function based on average V1 responses from Geisler and Albrecht



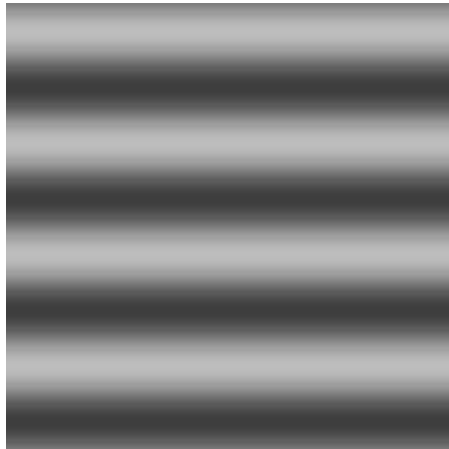
Contrast discrimination (masking) experiment

10% contrast target

50% contrast masker



Mask



Target + Mask



Contrast discrimination (masking) experiment:
target and mask different spatial frequencies

Target (2 c/deg)



10% contrast masker

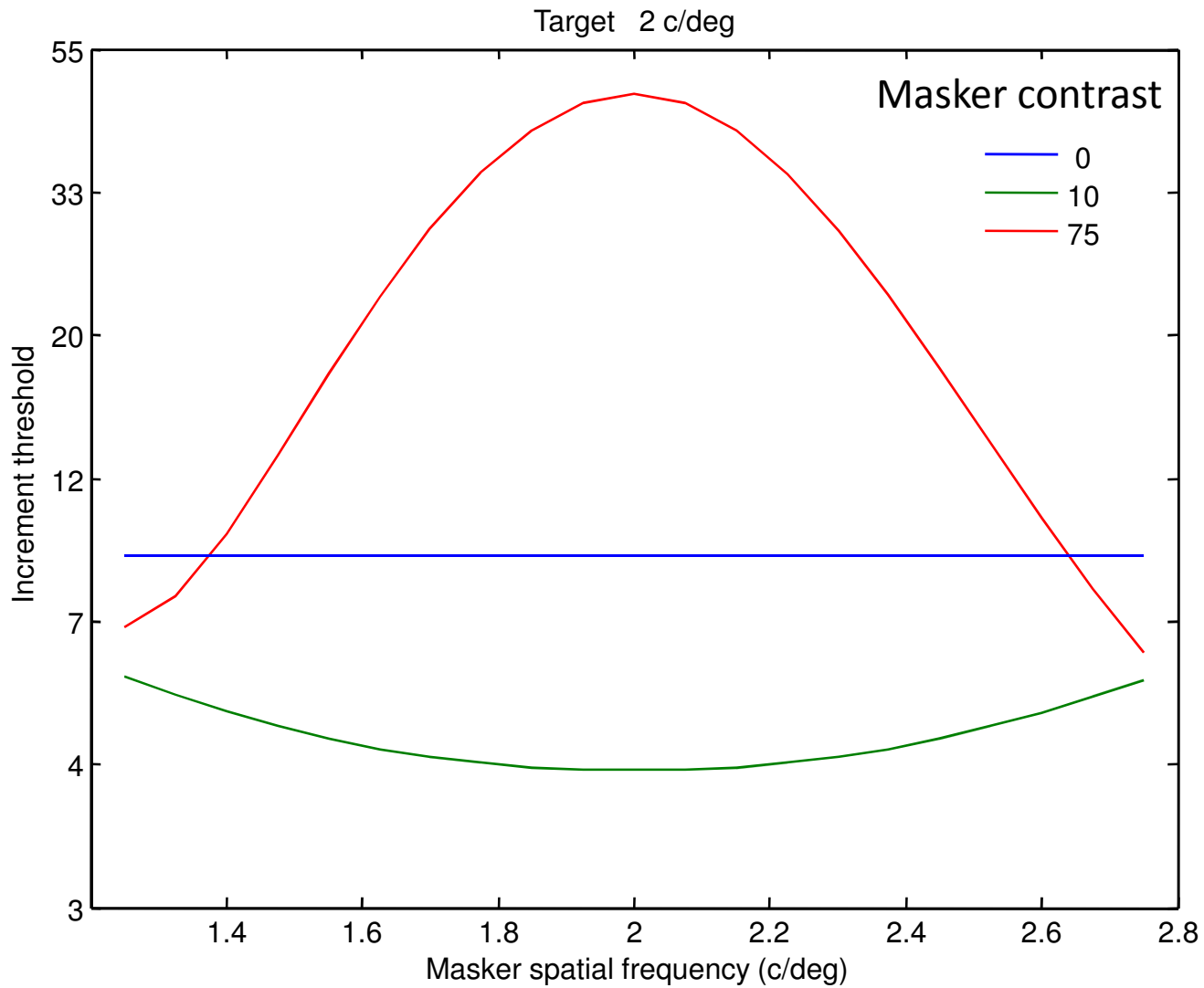
Mask (4 c/deg)



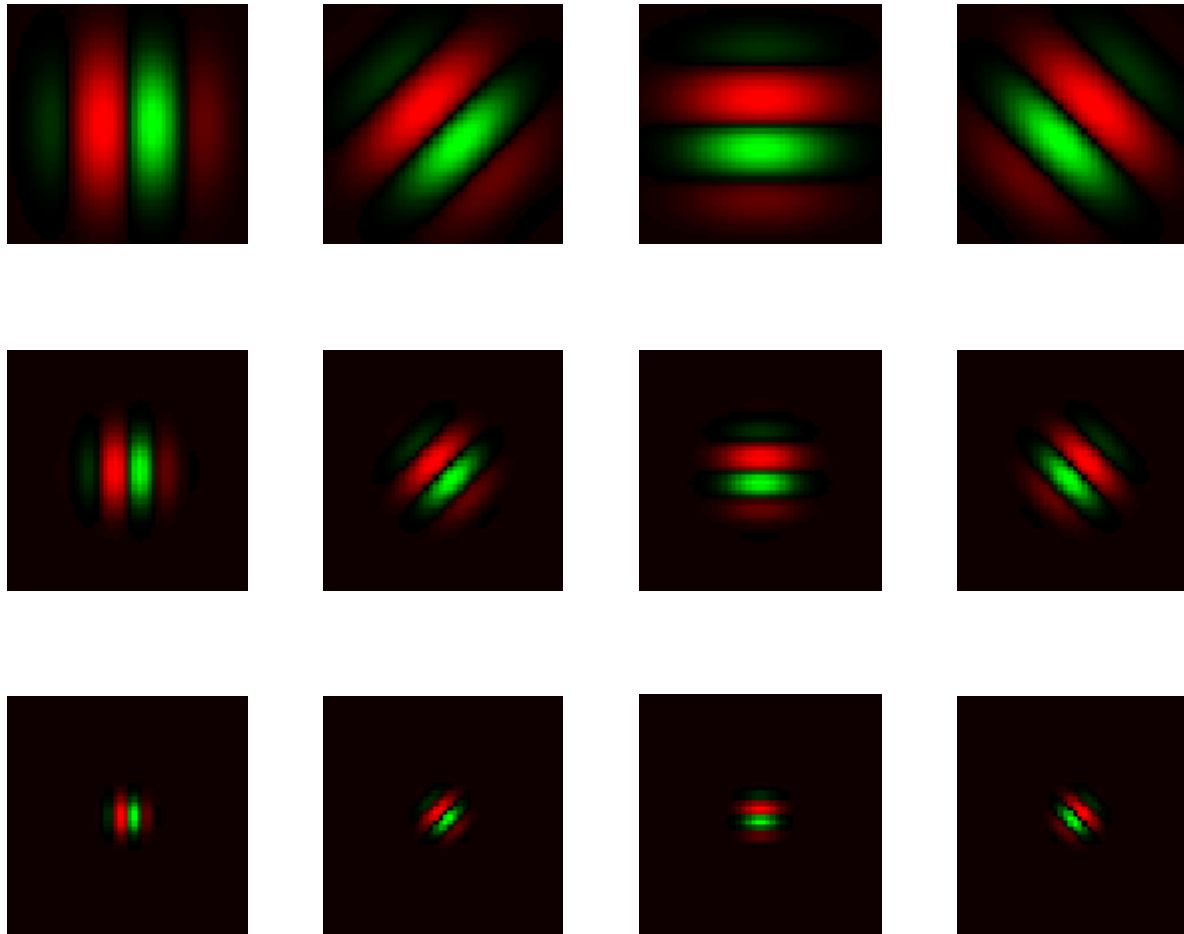
Target + Mask



Typical results when target and masker are different in spatial frequency



Predicting discrimination thresholds with the normalization model



Normalization model prediction: target and masker both 2 c/deg

