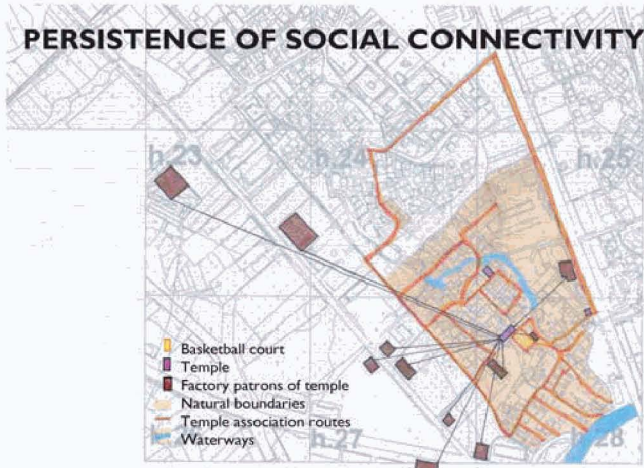


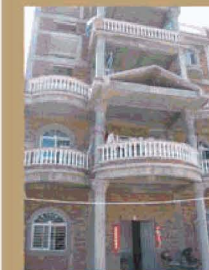
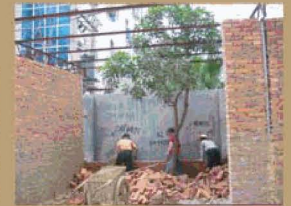
developmental context



Nearly all agricultural land is expropriated

1992

Village committee uses compensation funds for factory construction and uses rentals to improve the surroundings



Villagers use the compensation funds to expand their homes for renting

1996

Community constructs tall, multilevel buildings



1998

Factories enter Huojju at a rapid pace



2004

Following the entry of factories is an influx of migrants and related sideline occupations



EVOLUTION OF NATURAL VILLAGE BOUNDARIES AMID DEVELOPMENT

