

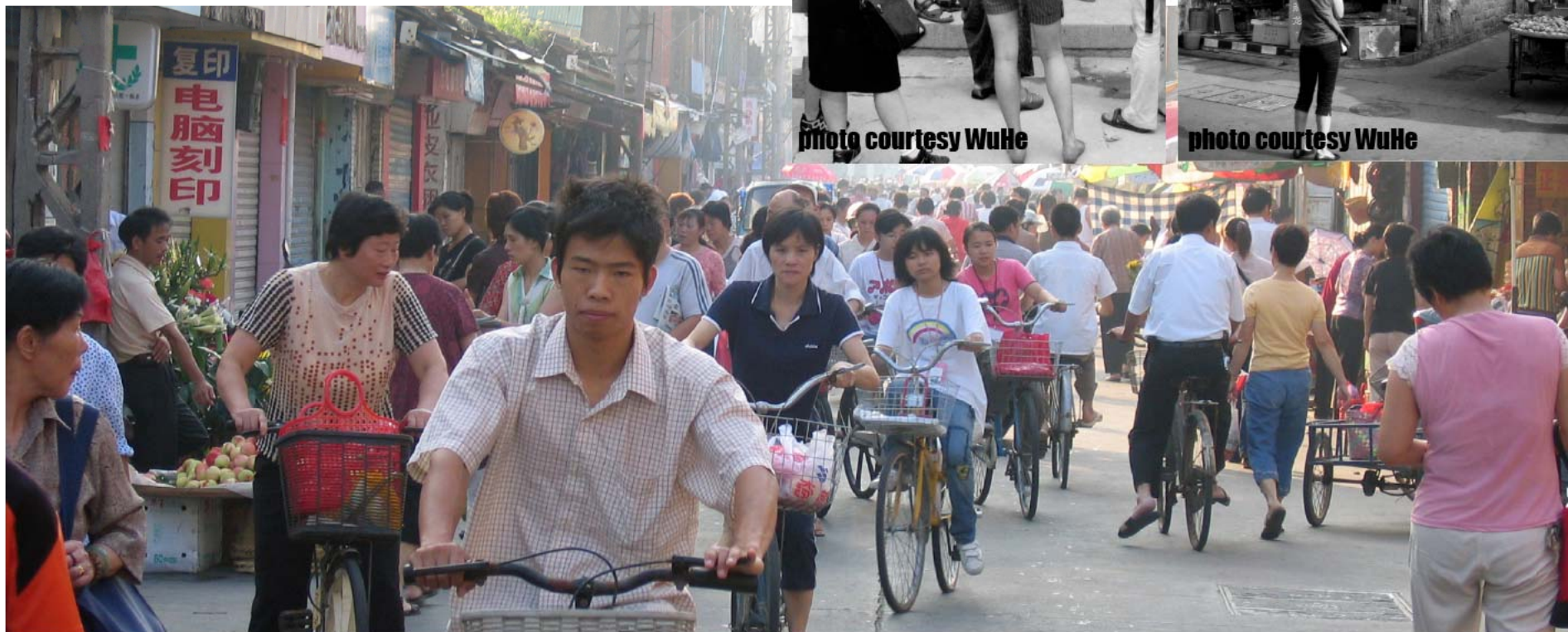


interventions/interpretations on xijie: scenarios for reuse (a community resource center)

**design proposals on a street in quanzhou, fujian province, china
katherine idziorek | university of washington | master of architecture thesis | 2007
thesis committee: dan abramson, jeffrey ochsner, manish chalana**

summer 2005: xijie design consultation activity

- **University of Washington students + faculty, WuHe design professionals, Quanzhou planning officials**
- **using design to assist city planners in negotiation with property owners differences between resident hopes for modernization and government goals for tourism and heritage preservation**



summer 2005: xijie design consultation



photo courtesy WuHe

- **community resource center and design clinic**
- **focus on design clinic as a tool to assist with ongoing change in a historic neighborhood**
- **community space that also accommodates tourists**

ktv site



ktv site: location + components



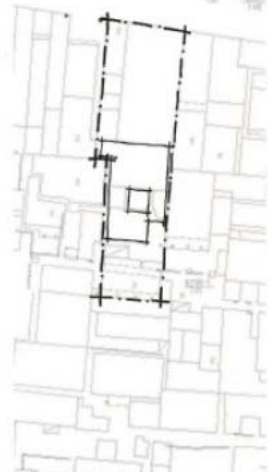
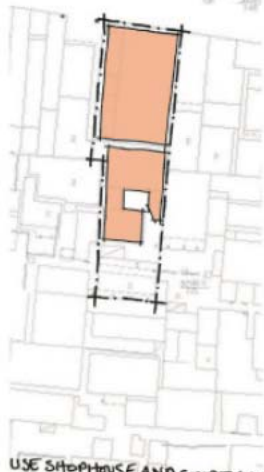
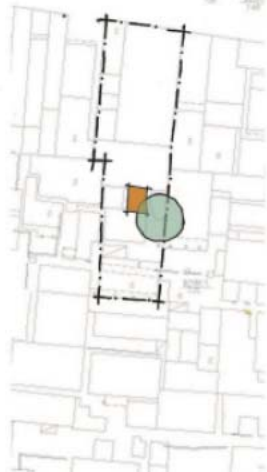
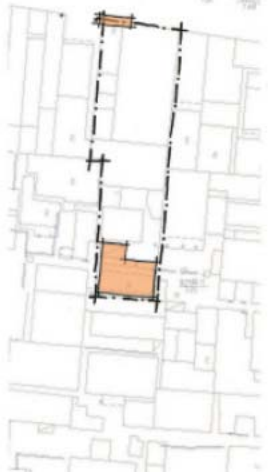
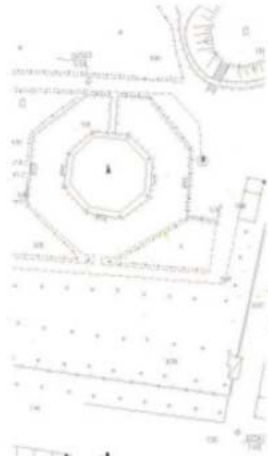
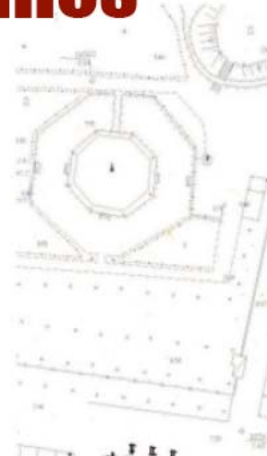
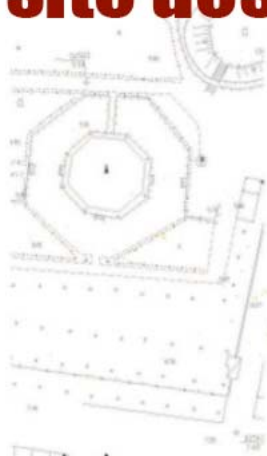
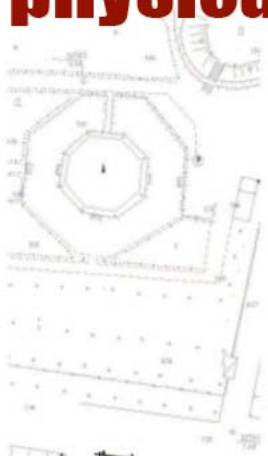
ktv site



- located on Xijie, directly across from east pagoda of KaiYuan Si
- three major site components: abandoned ktv + restaurant, traditional style courtyard house, two-story villa
- components have different ages, functions, materials



physical site design guidelines



STRUCTURALLY REHABILITATE AND/OR RESTORE BRICK FACADE AND VILLA.

PRESERVE COURTYARD AND TREE INTACT.

USE SHOPHOUSE AND COURTYARD BUILDINGS TO ACCOMMODATE PROGRAM ELEMENTS OR DEMONSTRATIONS OF BUILDING TECHNOLOGY OR REUSE.

MAINTAIN RHYTHM OF BAYS OF SHOPHOUSE.

MAINTAIN SOLID-VOID RELATIONSHIP OF COURTYARD HOUSE TO SURROUNDING BUILDINGS.

MAINTAIN RELATIONSHIP OF SHOPHOUSE TO THE STREET.

social site design guidelines

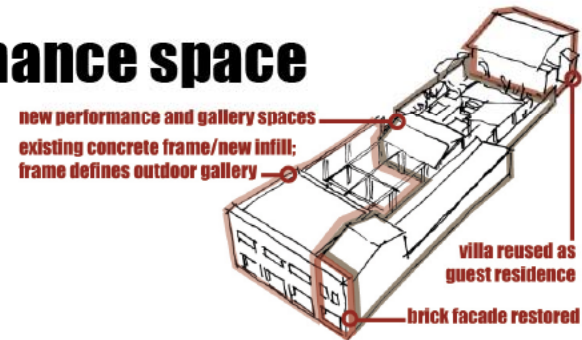


- common ground for meeting + working
- repository of knowledge for community reference
- public open space
- engaging destination for both locals + tourists

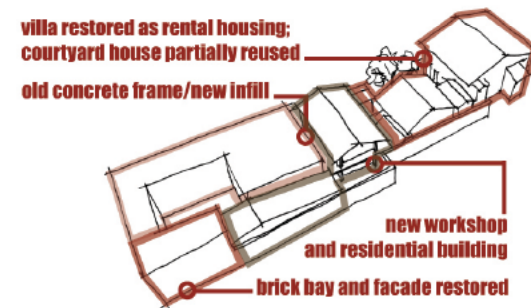


three scenarios: site design alternatives

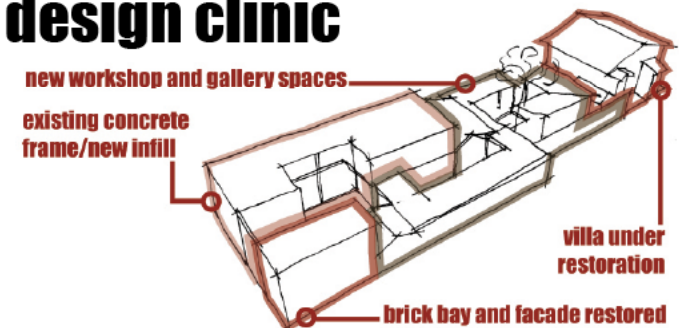
scenario 1: gallery + performance space



scenario 2: traveller's hostel + residence



scenario 3: workshop + design clinic



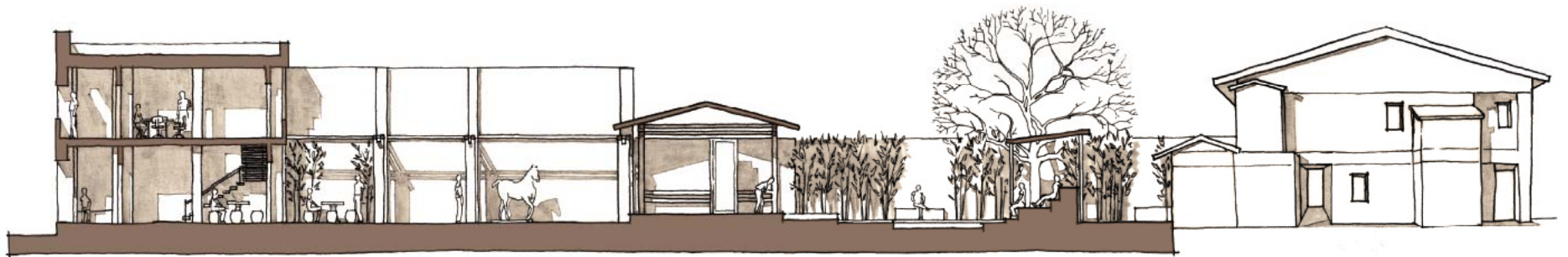
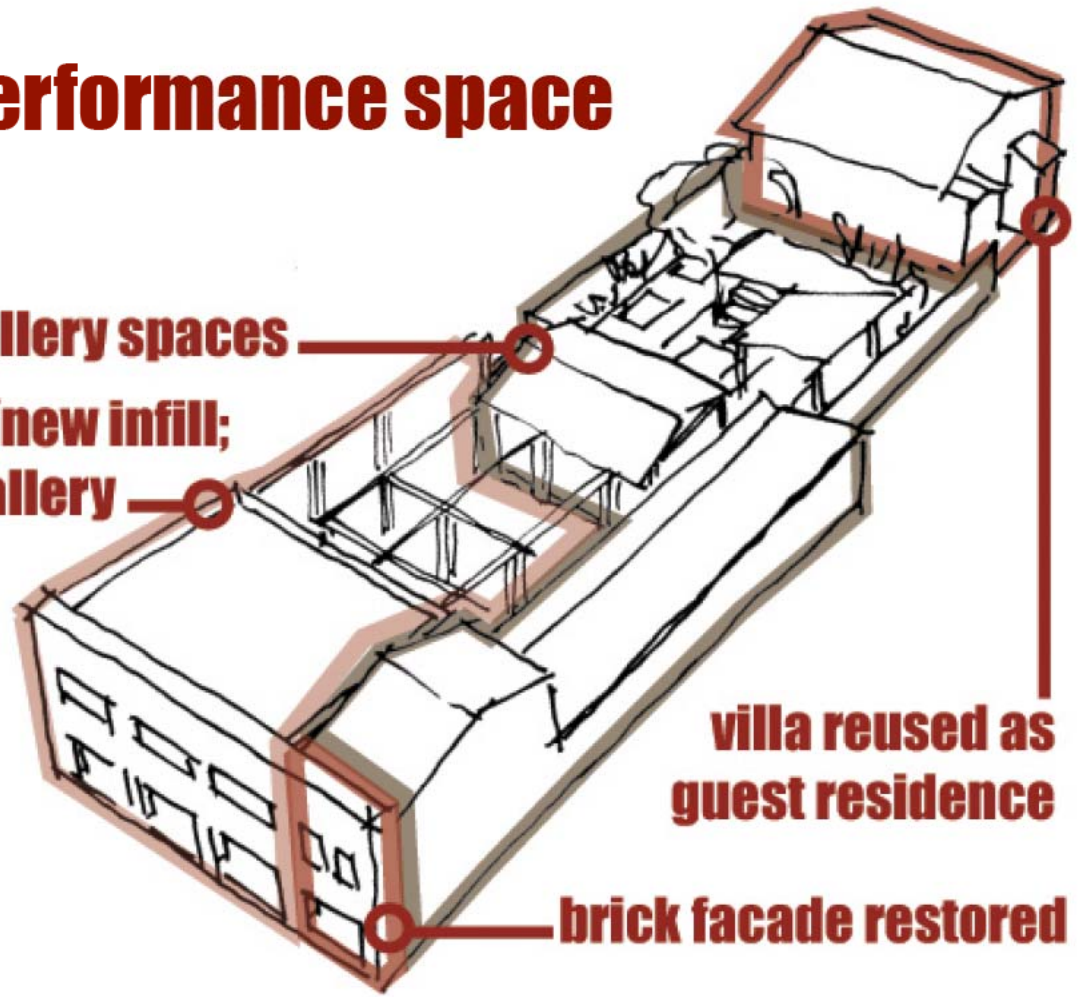
scenario 1: gallery + performance space

new performance and gallery spaces

**existing concrete frame/new infill;
frame defines outdoor gallery**

**villa reused as
guest residence**

brick facade restored



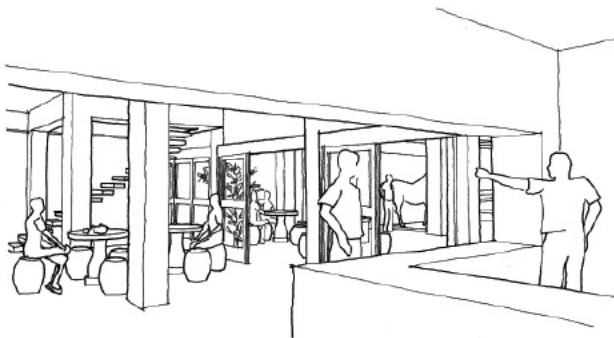
0 5m

scenario 1: gallery + performance space



view of performance space

indoor/outdoor gallery spaces



view of teahouse/shop

- accommodates both locals + tourists
- traditional art gallery, but also presents the building itself as a gallery of materials and construction methods
- exhibition of local building craft and traditions

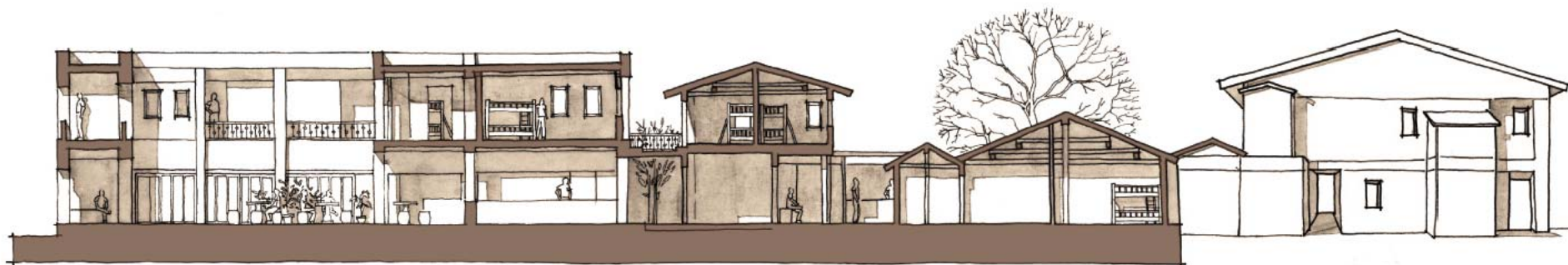
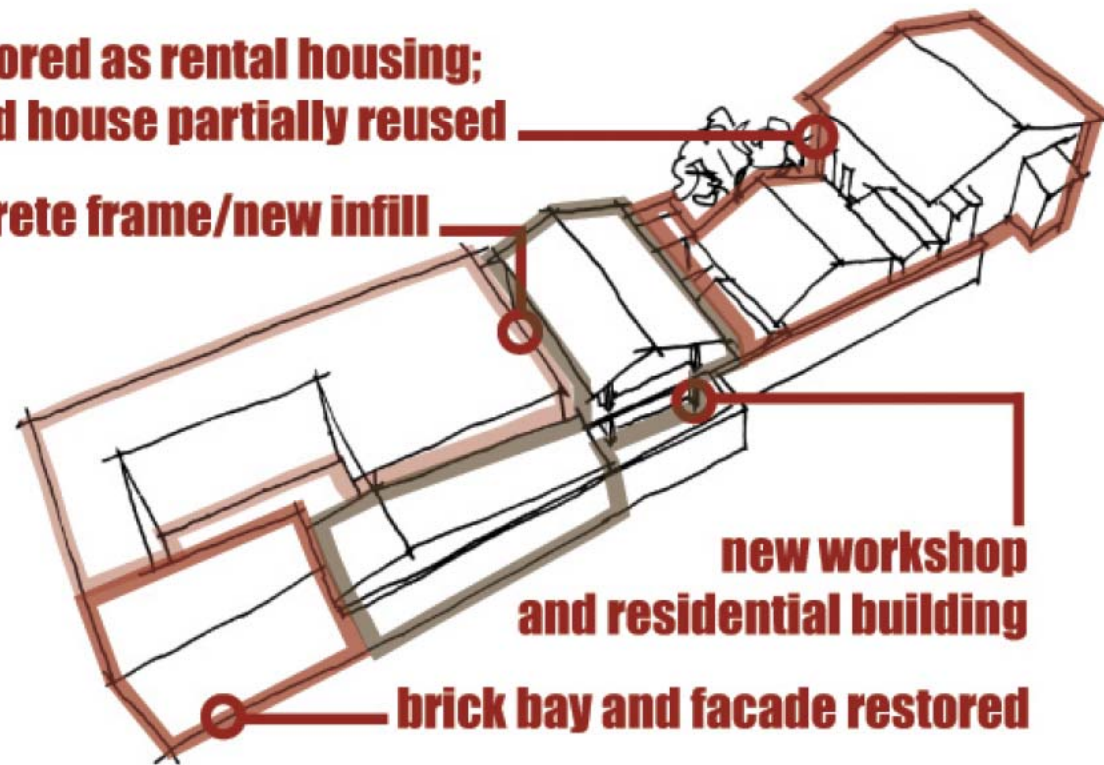
scenario 2: traveller's hostel + residence

**villa restored as rental housing;
courtyard house partially reused**

old concrete frame/new infill

**new workshop
and residential building**

brick bay and facade restored

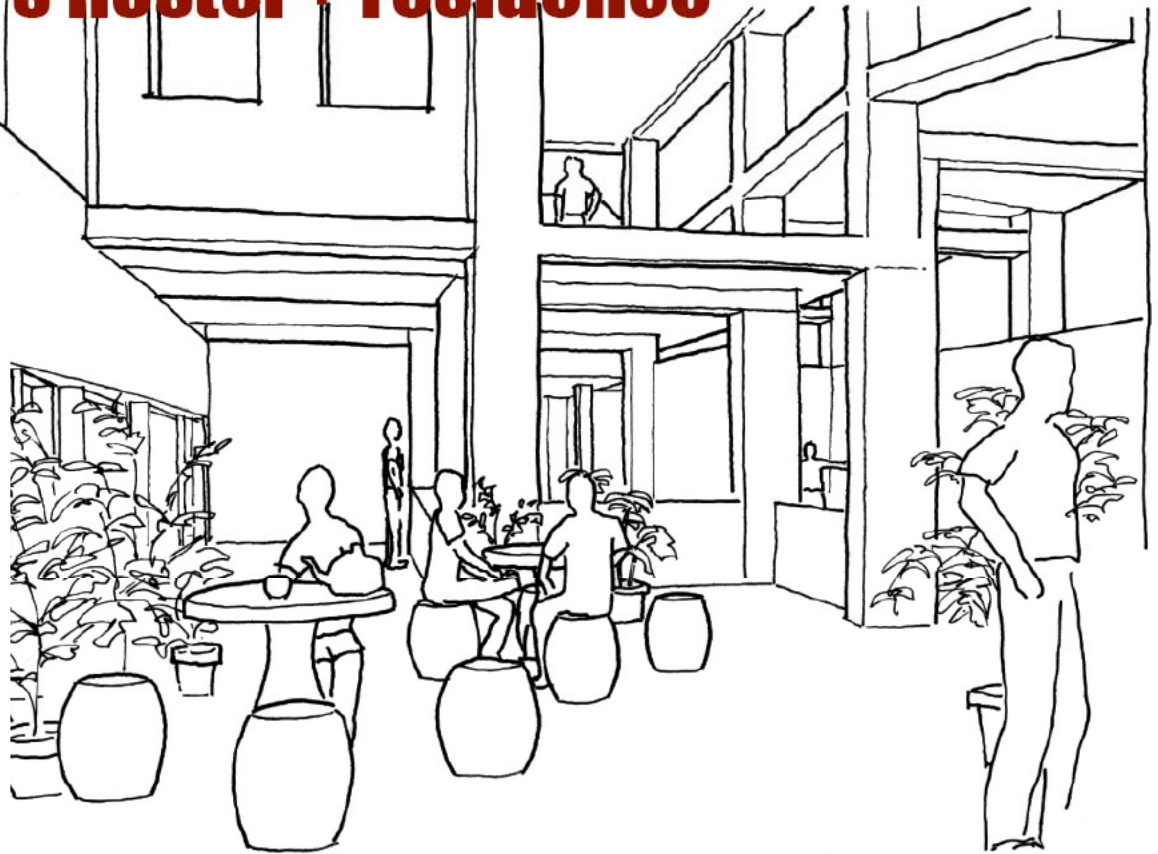


0 5m

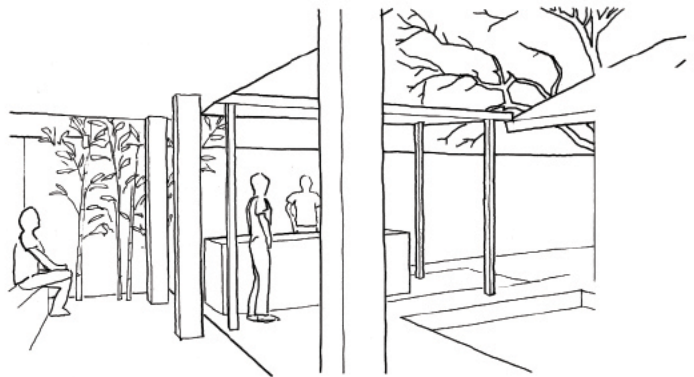
scenario 2: traveller's hostel + residence



view from reception to street entrance



view of entrance courtyard



view of residential courtyard

- site as a residential complex
- example of how modern residential programs can be accommodated in the reuse of an existing building
- various degrees of privacy within the site

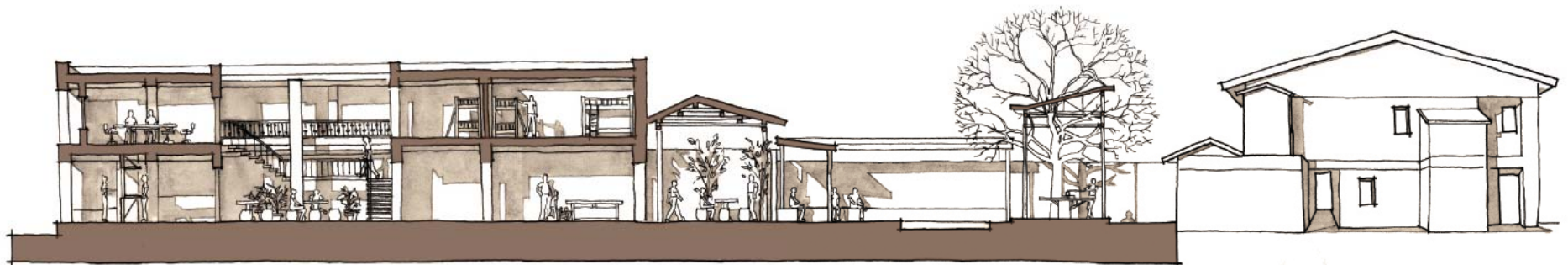
scenario 3: workshop + design clinic

new workshop and gallery spaces

**existing concrete
frame/new infill**

**villa under
restoration**

brick bay and facade restored



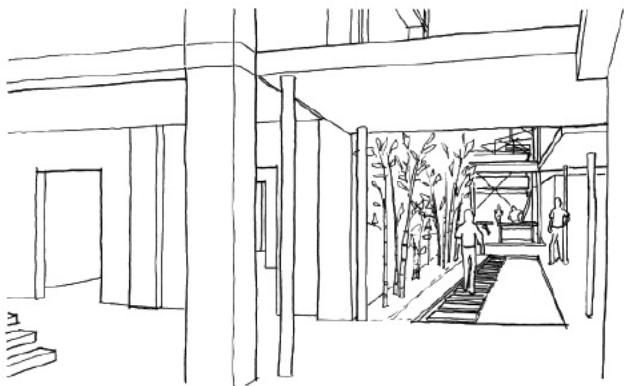
0 5m

scenario 3: workshop + design clinic



view of entrance from street

view of workshop/courtyard space



view of workshop through rain garden

- **celebration of building process + local craft traditions**
- **demonstrations + examples of different types/stages of building + re-building**
- **workshop as a performance activity + tourist attraction**

scenario 3: workshop + design clinic

The goal of the community resource center is to serve the various members of the community in different ways:



- **place for tourists to learn about local building traditions**
- **meeting + socializing space for neighborhoods residents**
- **discussion + consultation space for city planning officials**
- **gathering place for upgrading resources for residents**

reflections + conclusions

- **this design project is intended as a demonstration of future possibilities for this and other sites on Xijie**
- **at a broader scale, this project also addresses issues of ongoing change and transformation in Chinese cities**

