

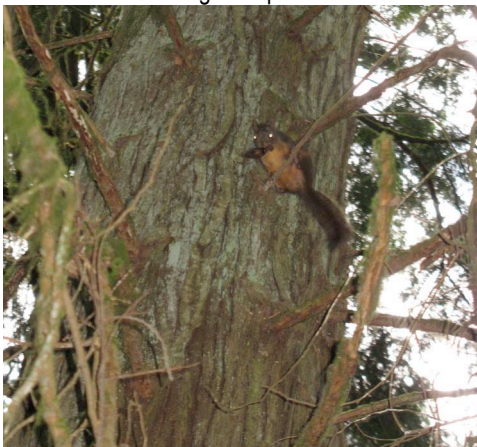
**Biology 452, Spring 2008**  
**Field Trip to Woodard Bay Natural Area on May 31, 2008**

Emma, Ping, Jermaine & George, Peer TA



We had to wait till 9:30, but the Yuma Myotis came out in force!!

Douglas Squirrel



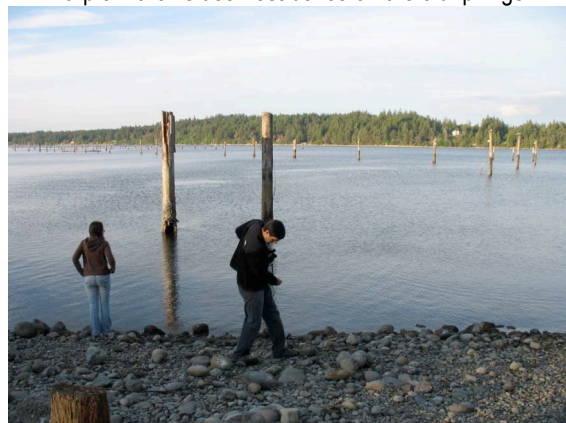
Can you find the Townsend's Chipmunk?



Nuttall's Cottontail



Purple Martin's use nest boxes on the old pilings.



Red-legged Frog at Salamander Pond



Dim photo of a Rough-skinned Newt in the pond.



Maternity colony of Yuma Myotis bats live under the old pier.



View of the water earlier in the day.



Last of the light before the bats arrived!



## Species Observed at Woodard Bay Natural Area

<b>Class Amphibia (Lissamphibia)</b>	
Order Caudata	
Family Salamandridae	Rough-skinned Newt
Order Anura	
Family Bufonidae	Red-legged Frog
Family Hylidae	Pacific Chorus Frogs (heard)
<b>Class Aves</b>	
Order Pelicaniformes	Double-crested Cormorant
Order Ciconiiformes	Great Blue Heron
Order Anseriformes	Common Merganser (+ chicks)
Order Falconiformes	Red-tailed Hawk (near Nisqually, not at Woodard Bay) Osprey
Order Galliformes	Grouse (species unknown; we heard calls)
Order Charadriiformes	Glaucous-winged Gull
Order Piciformes	Red-breasted Sapsucker Downy Woodpecker (uncertain id)
Order Coraciiformes	Belted Kingfisher
Order Columbiformes	Band-tailed Pigeon
Order Apodiformes	Hummingbird (no species id)
Order Passeriformes	Stellar's Jay (heard) Barn Swallow Violet-green Swallow Purple Martin Bewick's Wren Chestnut-backed Chickadee (heard) American Robin Cedar Waxwing Song Sparrow American Goldfinch Red-winged Blackbird
<b>Class Mammalia</b>	
Order Lagomorpha	Nuttall's Cottontail
Order Rodentia	Douglas Squirrel Townsend's Chipmunk
Order Chiroptera	Yuma Myotis
Order Carnivora (Pinnipedia)	Harbor Seal Coyote?? (tracks in mud) Raccoon (dead on Nisqually bridge, not in Woodard Bay)
Order Artiodactyla	White-tailed Deer (tracks in mud)