

Observations & Suggestions

Good Examples & Programs to Build Upon

White Center Heights Elementary School

It contains many facilities that a school should have and they did a good job sharing these resources with White Center Community as the pilot site for the Community Service Partnership.

Mt. View Elementary School

It has a covered pavilion which could be utilized by the school and community. The school has been selected as the 2nd Community Service Partnership location with will be great for the community.

Cascade MS & Evergreen HS & Highline Community Center

These two schools are located next to each other as well the Highline Community Center and they appeared to share most of the sport facilities, which is a good way to save space and resources.

5 Basic Suggestions

- A

White Center benefits greatly from some integrated school facilities, they could use some more Comunity Service Partnerships.
- B

Many of the public grounds already have the amenties to provide for after hours use, yet for safety reasons it is advised that there be a regulatory framework for the use.
- C

The public facilities are close enough to provide local access for the white center community so public investment should be made to enhance these programs and allow for greater involvement at all the area schools.
- D

Census data has shown that the area is increasing in population at the same basic rate of the rest of King County. The baby boom population’s children are reaching school age and early adulthood and if they choose to stay in the area there need to have facilities for them as well.
- E

The local diversity makes it so that the schools offer English Language Learning (ELL) courses as well as ABE/GED programs and these cultural programs should be encouraged.

White Center
Public
Open-Space
Analysis

Community use of public property for a greater community.

Schools,
Playgrounds,
Fields, Civic
Spaces

Department of Landscape Architecture,
University of Washington
| Project Design Studio,
Winter 2007 | Instructor:
Jeff Hou | Student
Group: Kent Straub-
Jones, Xiaowei Zhang



Puget Sound Region Examples of Shared Use Schools



Community School Partners of Highline

Mission

To support the well-being and academic success of Highline students through family, school, and community collaboration.

They have selected Mt. View Elementary School and White Center Heights elementary as CSP sites. They're involved in White Center elementary schools as a community-based nonprofit. They do great work with immigrant and refugee children and their families in the community by offering creative programs.

WC schools are definitely great resource for the community. In the past, the schools are used for many public meetings, community forums, housing, annexation, early learning initiative, public safety, etc. As well as other events; dance show cases, fundraising events, recently benefit dance performance for the deputy Cox, and other school and non school related events.

www.csphighline.org

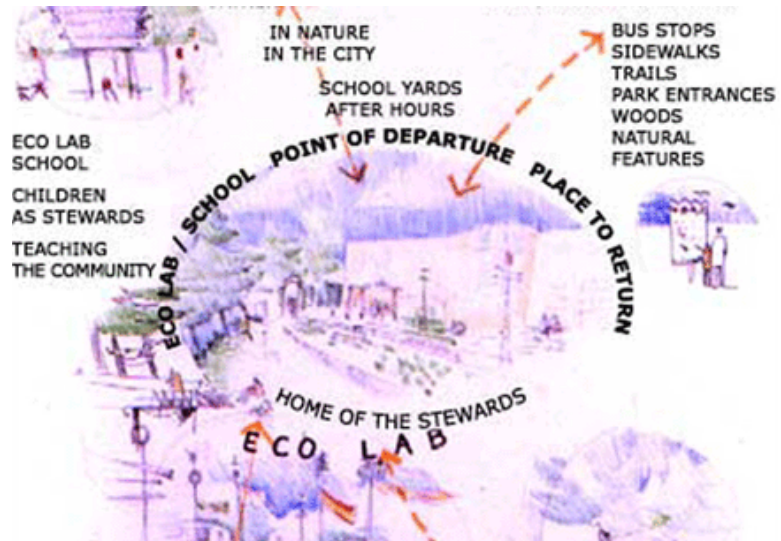


Thorndyke Elementary School Ecolab

Thorndyke Elementary School is prominently situated at the top of Tukwila's highest point. The school property itself includes a steep linear wooded area located to the south of the playing fields that, at its highest point, overlooks the city, this area connects with a flatter wetland.

In the fall 2002, an intergenerational group of volunteers completed an 15-month effort to design and build an outdoor classroom--called an Ecolab--where children can study ecology and become stewards of their school site.

The group included children, staff, and parents from Thorndyke Elementary School who worked alongside faculty, students, and alumni from the UW's College of Architecture and Urban Planning, and various other citizens.



COMMUNITY USE OF SCHOOLS CASE STUDY

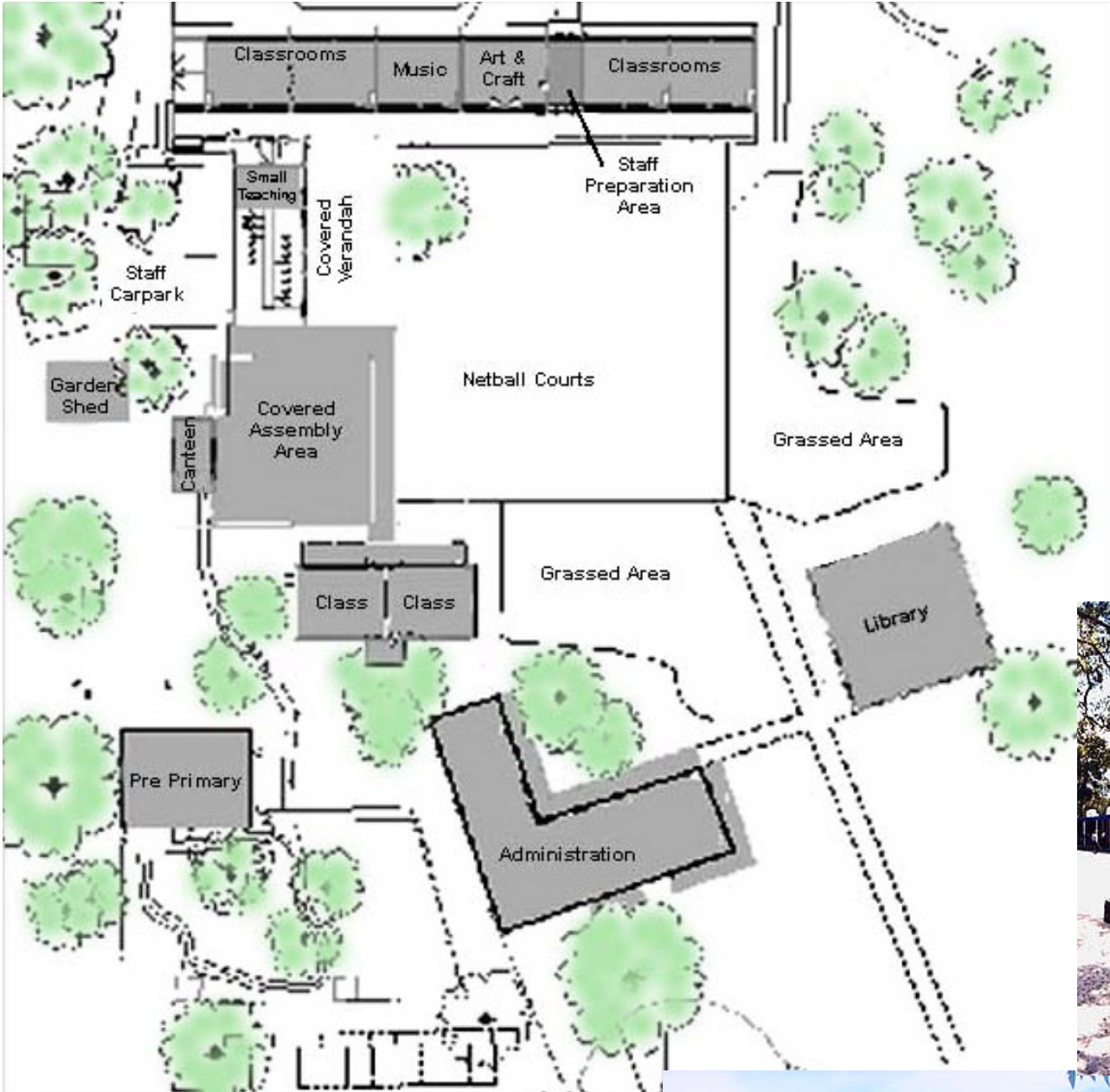
Community use of public property for a greater community.

Schools, Playgrounds, Fields, Civic Spaces

Department of Landscape Architecture, University of Washington | Project Design Studio, Winter 2007 | Instructor: Jeff Hou | Student Group: Kent Straub-Jones, Xiaowei Zhang



Parkerville Primary School, Australia



Parkerville is a close village settlement in a bush setting in the hills 30kms east from Perth, surrounded by farms. School facilities can be used for any activities that are compatible with the ethos of the school. These include cultural, educational, recreational, sporting and other uses.

- The facilities can be used:
- School Oval
 - Basketball and Netball Courts
 - General grounds areas
 - Covered Assembly Area
 - Art Room
 - Staff Room
 - Use of other rooms may be negotiated.

- The advantages:
- the development of positive perceptions about schools and learning;
 - the development of co-operation and goodwill in school/ community/local government relationships;
 - increased community awareness of school facilities;
 - the opportunity for schools to improve their curriculum and learning programs through access to a wider range of resources and talents in the community;
 - improved levels of security for the school through out of hours use;
 - the potential for increased financial returns to the school;
 - access for the community to a wider range of facilities; and
 - more efficient utilisation of the community's large investment in school facilities.



Schools, Playgrounds, Fields, Civic Spaces

Department of Landscape Architecture, University of Washington | Project Design Studio, Winter 2007 | Instructor: Jeff Hou | Student Group: Kent Straub-Jones, Xiaowei Zhang



Bethesda-Chevy Chase High School, Maryland



Schools in Montgomery County Serve Everyone. They provide space for community meetings, clubs, religious celebrations, recreation activities, academic enrichment classes, or special events.

Some of the local churches also rent these school-places to organize their activities.

The case showing here is that St. Luke's Episcopal Church hold their community festival, and had Jazz Combo at Bethesda-Chevy Chase High School



User Responsibilities

DOs & DON'Ts of Community Use

Do designate one representative who will be in attendance for the entire event, to be the contact with the school, submit & sign forms, provide picture ID, proof of home address, & attend CUPF training.

Do supervise participants at all times in classrooms, hallways, etc. Children must be supervised by adults at all times.

Do make note of the arrangement of furniture in the classroom when you arrive and be sure it is arranged the same way when you leave.

Do make changes/adjustments at least 14 days prior to the event. There is a \$25.00 adjustment fee.

Do request the use of the cafeteria if you will be serving food or drink. NEVER serve food or drink in the gym, auditorium, or classrooms.

Do request and pay for needed school equipment in advance through the Building Use Form.

Do observe posted parking signs at all times, including weekends. Spaces reserved for school staff, i.e., Principal & Assistant Principal should not be used.

Do Not prop open any outside doors. This is a critical security concern!!

Do Not allow any open flames to burn inside or outside the building, including candles and incense.

Do Not permit smoking or alcoholic beverages anywhere on school property.

Do Not allow any papers, books, and other Montgomery County Public School classroom materials and equipment to be used or moved.

Do Not use any services unless specified on the Building Use Form. You may not use the kitchen unless you have paid for a food service worker. (Use water from a nearby sink for coffee or tea.)

Do Not use any equipment not arranged for in advance and use only regulation indoor equipment in the gym.

Do Not arrive early or stay late. The starting and ending times on the Building Use Form are firm. (If you arrive early, the doors will not be open.)

Do Not offer staff gratuities. (Please do not tip the worker.)

Do exit building immediately at the sound of a fire alarm!

<http://www.montgomerycountymd.gov/content/cupf/documents/responsibilities.htm>



Schools, Playgrounds, Fields, Civic Spaces

Department of Landscape Architecture, University of Washington | Project Design Studio, Winter 2007 | Instructor: Jeff Hou | Student Group: Kent Straub-Jones, Xiaowei Zhang



School Amenity Matrix



School Amenities Chart											
	Playground	Soccer Goals	Baseball Backstop	Basketball Court	Play Field Size	Seating	Gathering Space	Gym (inside)	Pavilion	P-Patch	Special Items
White Center Heights ES	X		X	XXX	L		X	X	X	X	
Mt.View ES	X			XX	S	X	X		X	X	
Shorewood ES	X	X		XX	M			X			
Salmon Creek ES	XX		XX	XX	M						
Cedarhurst Beverly Park ES	X			X	M					X	
Cascade MS		X	XX				X	X			shared facilities w/ tennis courts
Evergreen HS		X	XX			X	X	X			shared facilities w/ tennis courts
Westside Private ES	X			X	M			X			shared facilities
Explorer West Private MS	X			X	M			X			shared facilities
Learning Way Private ES	X						X				
Holy Family Private ES	X	X		XXXX	S	X					
SWCS Private MS	X		X	X	S						
Roxhill ES - Seattle	X		XX	X	M						connected to Roxhill Bog

The White Center Community is under the jurisdiciton of the Highline School District.

The residents also have the choice of several private schools.

This inventory uses X's to list which schools have which amenities, the more X's the more relative amenities.

The Play Field Size is listed in relative terms from S to M to L being the largest.

Two groups of schools shared openspace facilities that included Westside Private Elementary School, and Explorer West Private Middle School. As well as Cascade Middle School and Evergreen High School which also shared facilities with the King County Highline Community Center.

White Center Public Open-Space Analysis

Community use of public property for a greater community.

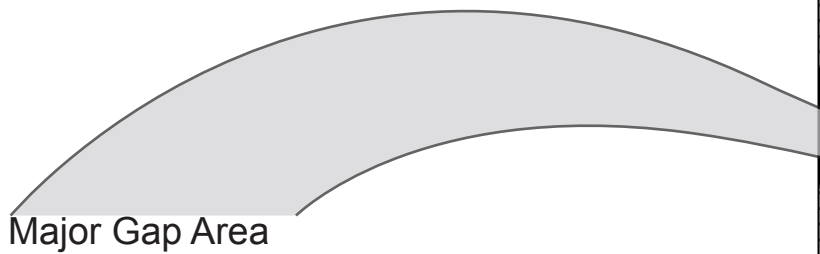
Schools, Playgrounds, Fields, Civic Spaces

Department of Landscape Architecture, University of Washington | Project Design Studio, Winter 2007 | Instructor: Jeff Hou | Student Group: Kent Straub-Jones, Xiaowei Zhang

School Gap Analysis Map

This map shows how far people are separated from schools and public parks. This map is created to show how close people are to local amenities.

This also shows that there is a large gap in the community around 20TH SW AVE & SW 110TH ST.

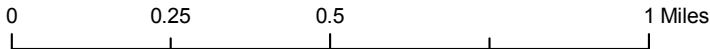


Key

- ▲ Schools
- ▤ Parks

Schools & Parks Gap

- 1/4 mile
- ▨ 1/2 mile
- 1 mile



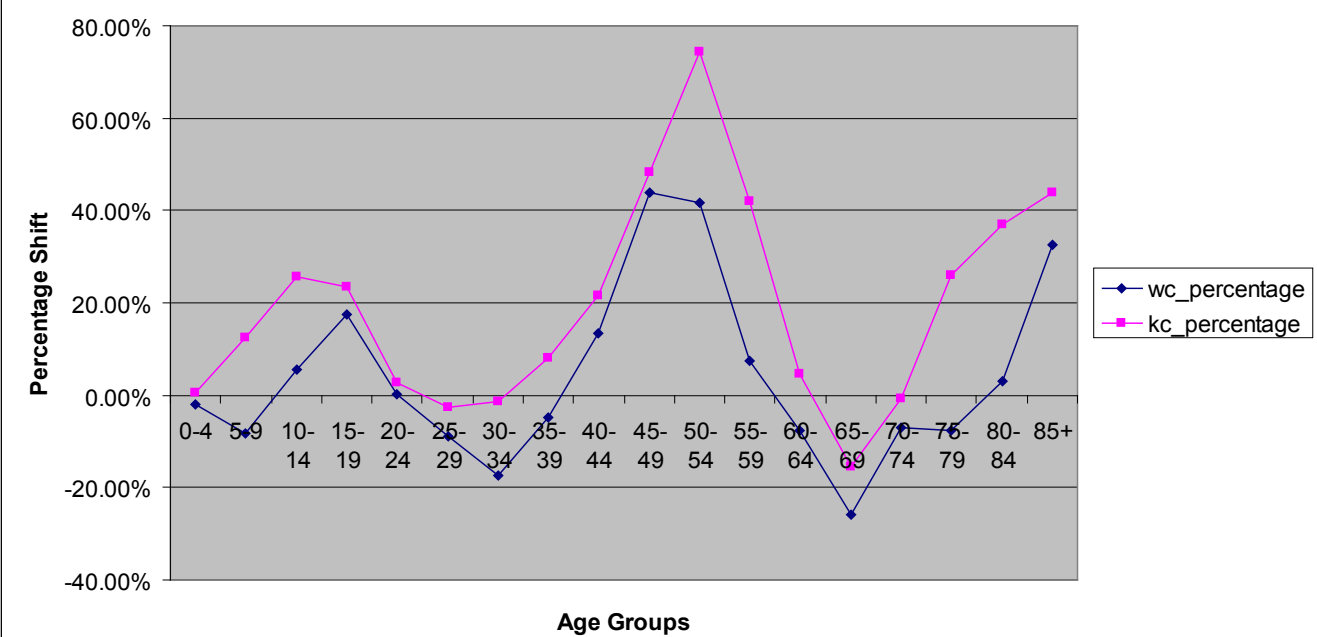
White Center
Public
Open-Space
Analysis

Community use of public property for a greater community.

Schools,
Playgrounds,
Fields, Civic
Spaces

Department of Landscape Architecture,
University of Washington
| Project Design Studio,
Winter 2007 | Instructor:
Jeff Hou | Student
Group: Kent Straub-
Jones, Xiaowei Zhang

Population Trends in White Center* vs King County



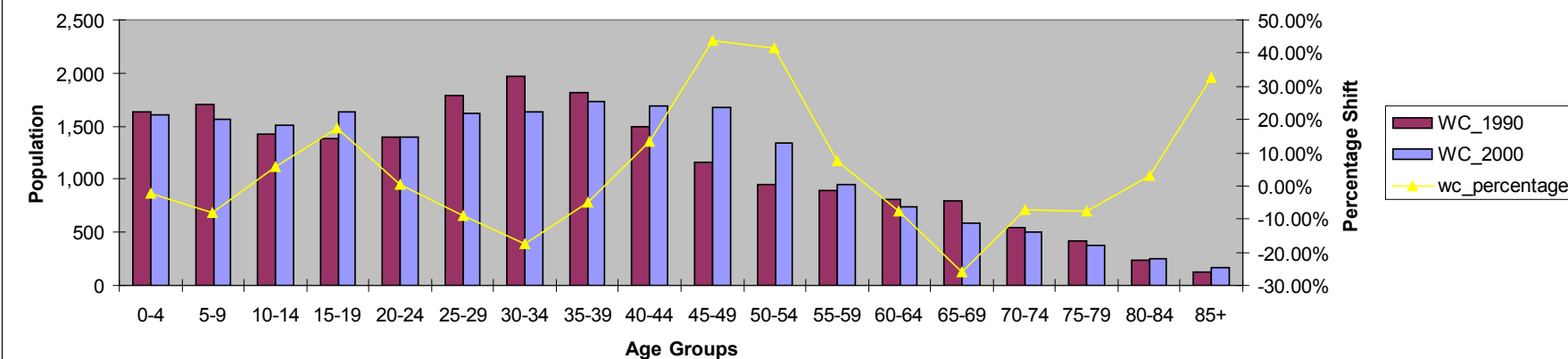
Census Graphs

The 1990 US Census data block was much larger then 2000 so the drop is consistent.

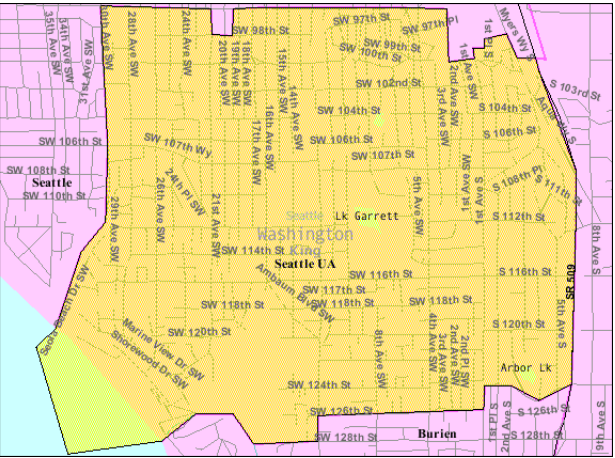
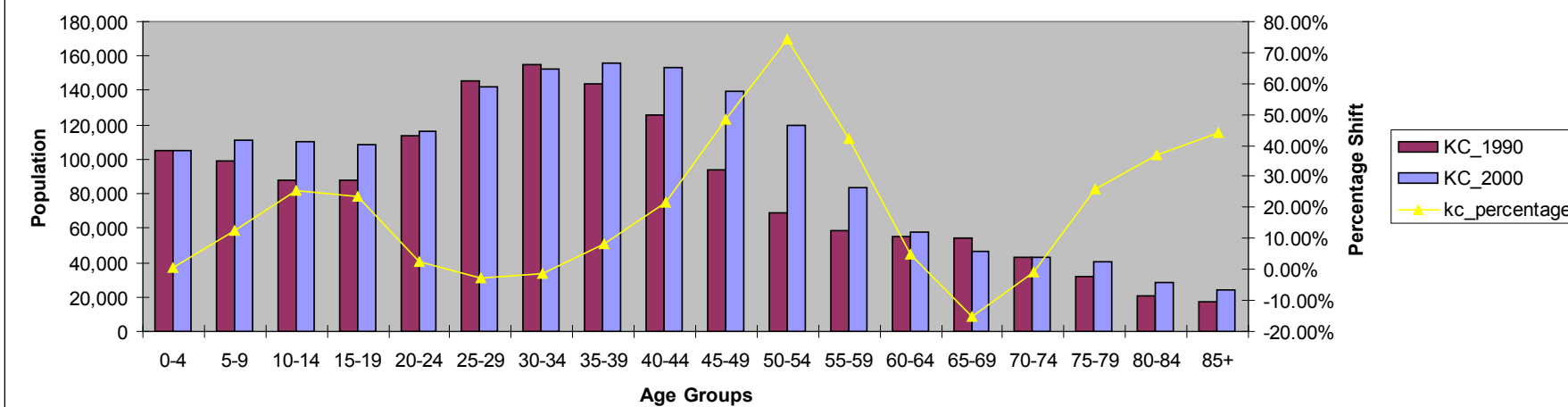
What is unique is that the population cycles are consistent amongst King County and White Center.

The central arc is the Baby Boom generation born around WW II where the far left curve is the newer generation of residents who will need more resources.

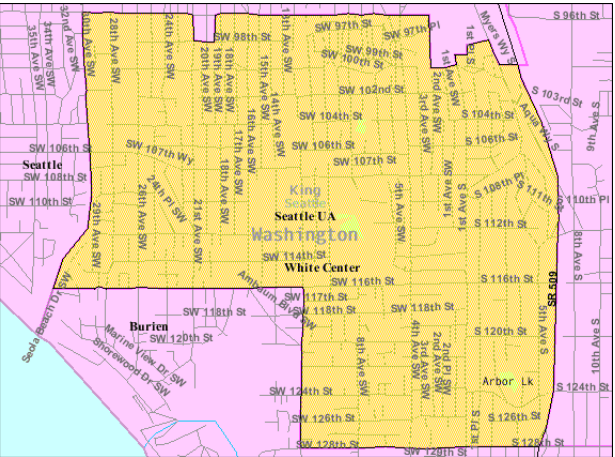
White Center* Population Change



King County Population Change



1990 Census Map



2000 Census Map

White Center Public Open-Space Analysis

Community use of public property for a greater community.

Schools, Playgrounds, Fields, Civic Spaces

Department of Landscape Architecture, University of Washington | Project Design Studio, Winter 2007 | Instructor: Jeff Hou | Student Group: Kent Straub-Jones, Xiaowei Zhang