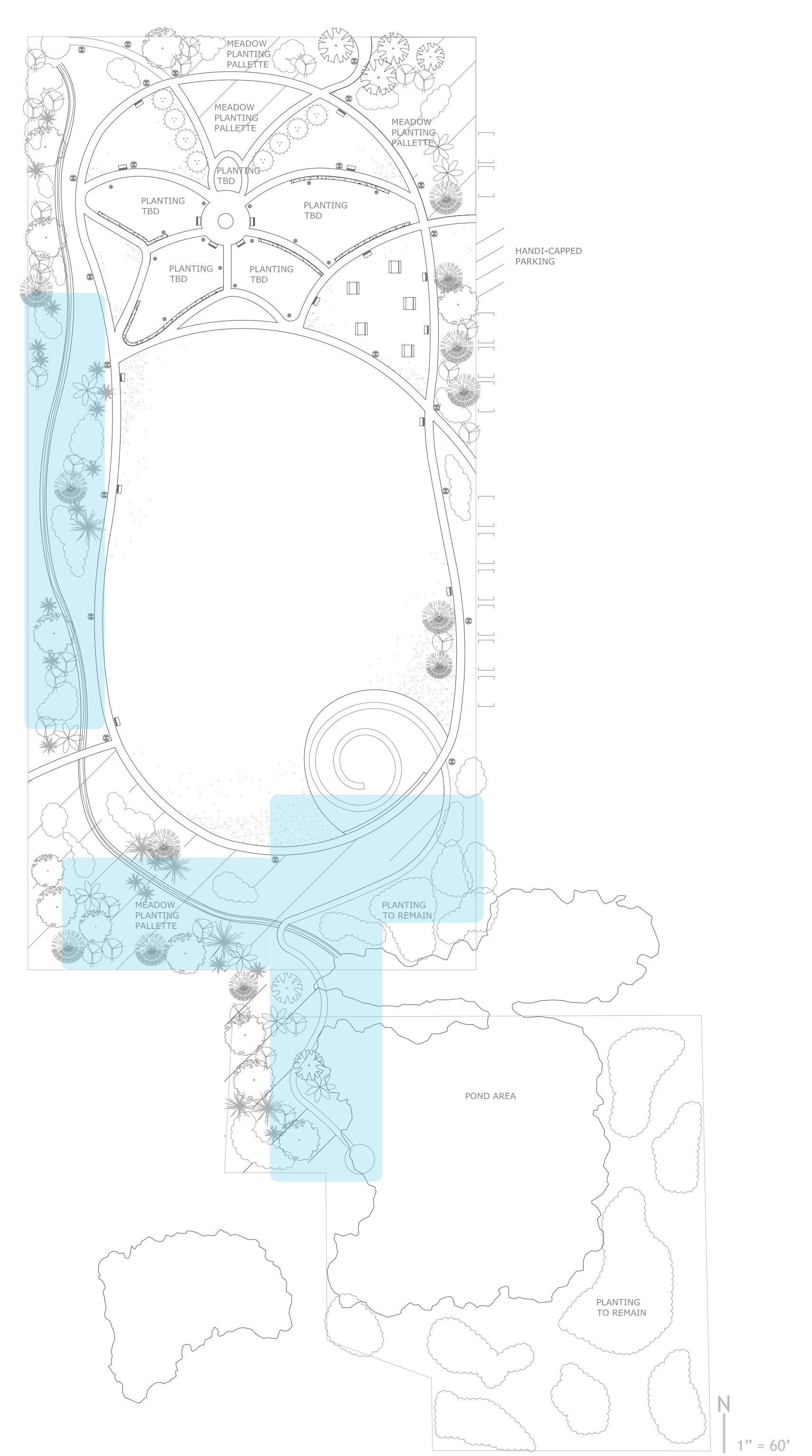
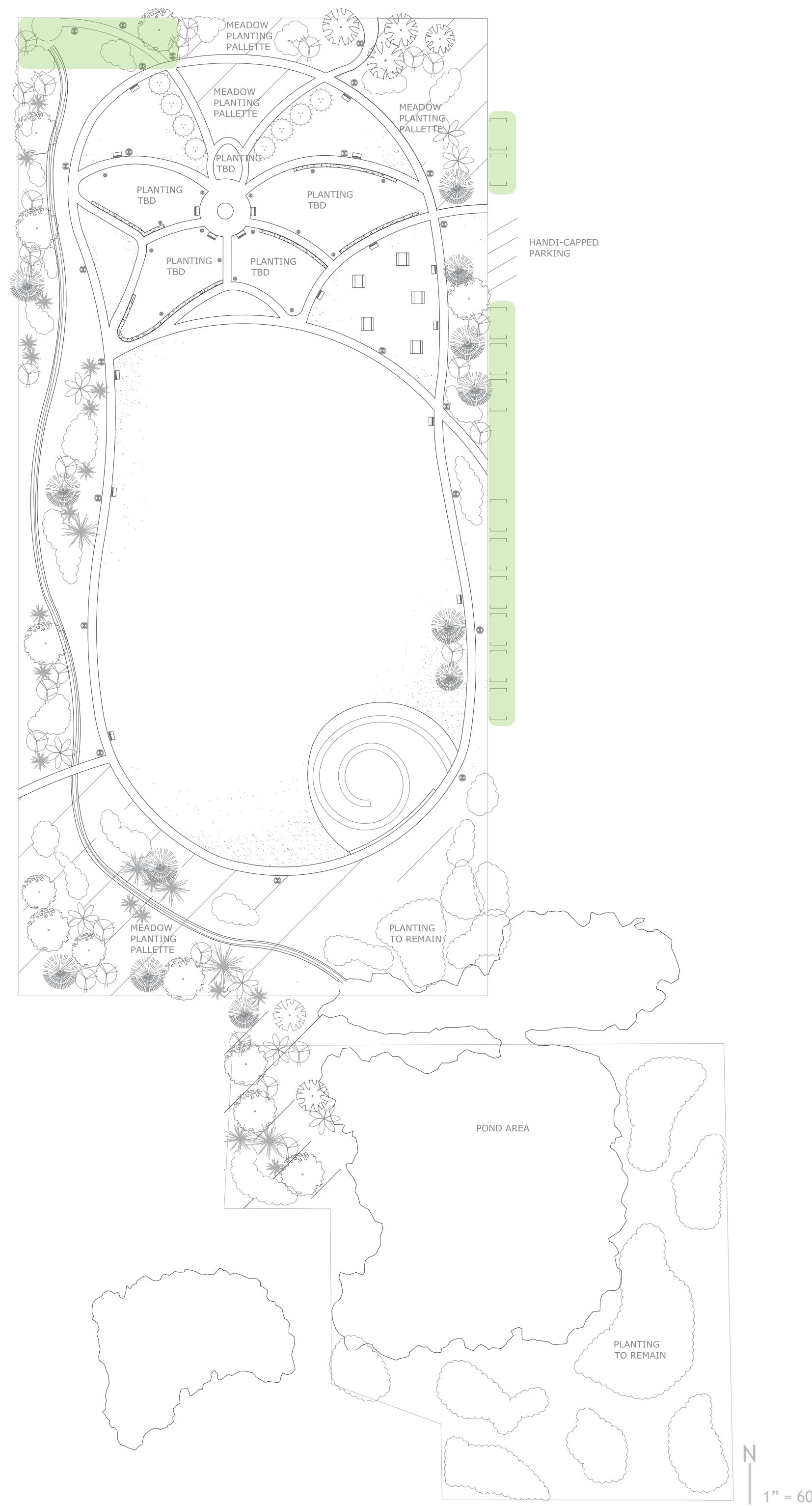
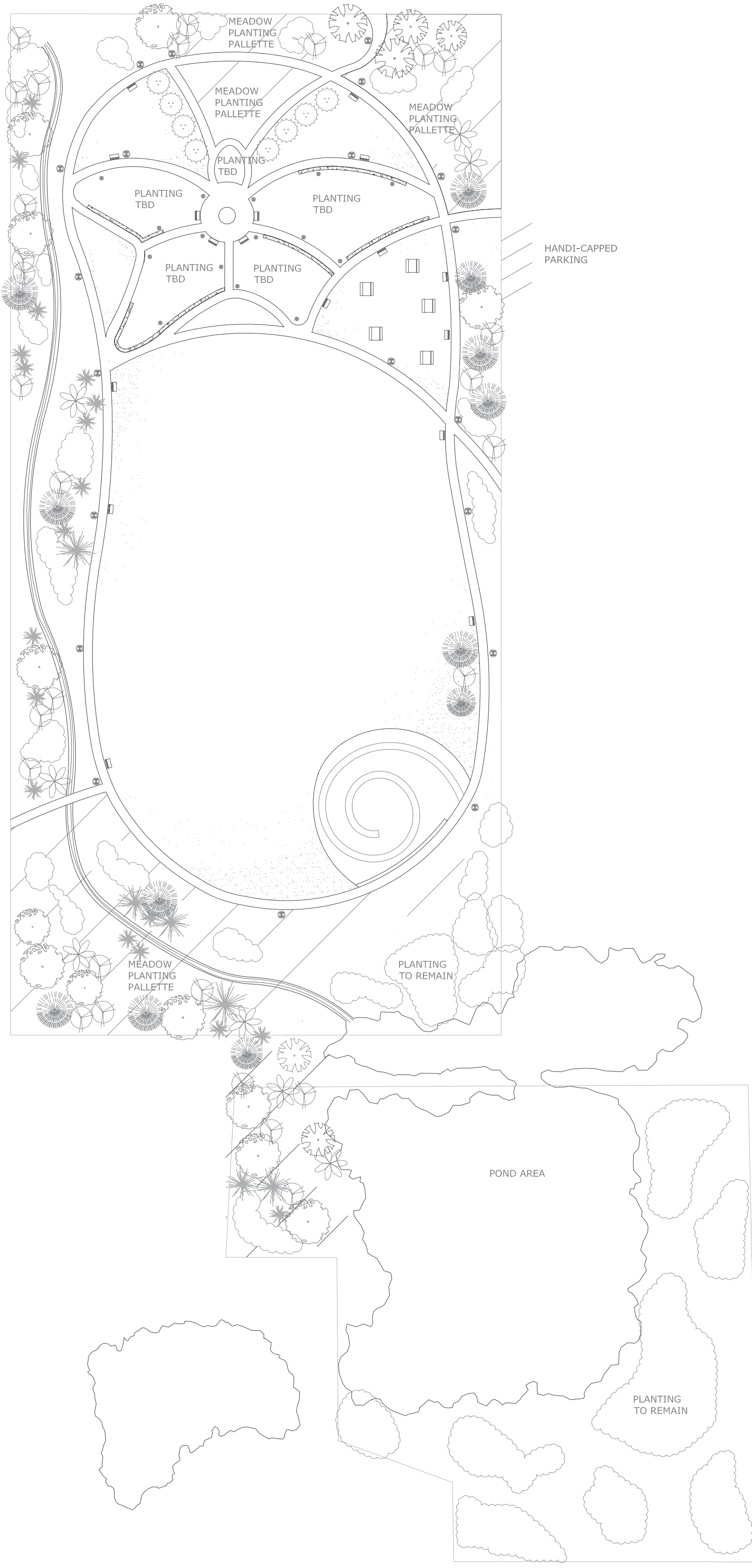


“Metamorphosis” of White Center Heights Park...



vignette of earthwork with public art piece on top

Today, White Center Heights Park is nothing more than an open field surrounded by a thick layer of invasive plant species; but what could it be tomorrow? This place has an enormous amount of potential to become a vibrant, colorful, and well used space that reflects the community that surrounds it. Our vision for this site is one that is a whimsical celebration of the diversity within White Center and symbolizes the positive *metamorphosis* the community is currently experiencing. The garden area in the northern part of the design is intended to contain multicultural gardens. Multicultural gardens illustrate geographic and botanical relationships that create a greater appreciation and awareness for the natural world. These gardens could be planted and maintained by the local community, ultimately fostering community participation and pride in the park. It is so important to incorporate a community participation aspect in the plan because it is a *sense of pride* that will keep this park crime free and beautiful for years to come. It's now up to you to make this *vision a reality*.



phase 1 (June 2007)

This phase of the project will be when the majority of the parks features are realized...

Multicultural Gardens & Sprayground & Interactive Fountain

The heart of our park...A place to play, gather, garden, or read a book.

Walking Loop Trail

The addition of the walking loop along the perimeter of the open field creates an opportunity for exercise while helping to define all the different activity zones within the park.

Outdoor Classroom & Outdoor Stage

The outdoor classroom, complete with boulder seating, creates an excellent resource for WC Heights Elementary for hands-on, environmental learning. The stage provides an opportunity for musical or theatrical performances.

Picnic / BBQ Area & Multipurpose Playfield

The open field creates a flexible area for events, activities and gatherings. The nearby picnic and BBQ area is placed so if a large number of picnickers are there they can overflow onto the field area.

Viewing Berm / Public Art Space

Another 'high point' of our design is the grass covered earthwork in the lower SE corner; it is a prime location for viewing the pond and could potentially accommodate public art that further stresses *cultural diversity* as an identity of the park.

phase 2 (2008-2009)

Phase 2 & 3 were created in order to complete a few features that were unable to be accomplished, due to permitting and or cost, during the extreme makeover...

Elevated Viewing Platform

A viewing platform at the top NW corner of the site provides an opportunity to see the form of the butterfly from high above while creating a grand entrance to the park helping to establish it's own unique identity. The connecting path will also allow people to come into and experience the park and garden first hand.

Additional Parking

On street parking will be added in relation to the amount of use this park receives.

Interpretive Signage

Interpretation involves translating ideas and concepts into a format that attracts, interests and inspires visitors. This will enhance people's understanding and enjoyment of the places they visit; good Interpretive signage encourages visitors to care about the places they visit and helps minimize environmental and cultural damage by explaining the impacts of various behaviors and suggesting appropriate alternatives.

phase 3 (2010-2015)

Wetland Boardwalk

The meadow in the southern portion of the site creates an opportunity for a unique experience for our visitors. It incorporates tall meadow grasses, which is excellent mature butterfly habitat, and a boardwalk. The boardwalk is an excellent opportunity to experience a *sense of nature* in a very urban location. It will allow people to observe animals in their natural surroundings without adversely affecting their habitat

Continued Wetland Restoration

In this phase, we would like to see a continued effort to reclaim and improve the wetland areas. This would include the removal of invasives, and minimal maintenance of these naturalistic areas.

design concept & project phasing

White Center Heights Park

