

# Planting Palette

The planting design we've created is a combination of unique, yet related landscapes to create a site where habitat, cultural diversity, and educational opportunities are all readily available within this space. The park will consist of a multicultural garden, an open recreation field, upland wooded area, wetland area, and meadow grassland. The palette of plants (shown below) chosen for the wetland, woodland, and meadow areas will provide the necessities for caterpillars and butterflies; these plants have been selected in accordance with those listed by Woodland Park Zoo's recommended vegetation for healthy habitat.



## Trees

1. *Acer circinatum* (Vine Maple)
2. *Populus tremuloides* (Quaking aspen)
3. *Rhus typhina* (Staghorn sumac)
4. *Tsuga heterophylla* (Western hemlock)
5. *Vitex Agnus-castus* (Chaste tree)



## Shrubs

6. *Buddleia davidii* (Butterfly bush)
7. *Cornus sericea* (Red twig dogwood)
8. *Philadelphus lewisii* (Mock orange)
9. *Syringa vulgaris* (Lilac)
10. *Viburnum carlesii* (Viburnum)



## Perennials

11. *Allium sinensis glaucum* (Ornamental onion)
12. *Aster dumosus* ('Blue Lake' Aster)
13. *Aster novae-angliae* ('September Ruby' Aster)
14. *Camassia leichtlinii* (Great Camas)
15. *Centranthus ruber* (Red valerian)
16. *Dicentra eximia* ('Pink' Bleeding heart)
17. *Echinacea purpurea* ('Magnus' Purple coneflower)
18. *Lavandula angustifolia* ('Munstead' Lavender)
19. *Liatris spicata* ('Floristan Violet' Gayfeather)
20. *Monarda didyma* ('Croftway Pink' Bee balm)
21. *Rudbeckia hirta* ('Irish Eyes' Black-eyed Susan)
22. *Thymus serpyllum* (Mother of thyme)



## Ferns

23. *Athyrium filix-femina* (Lady fern)
24. *Polystichum munitum* (Sword fern)



## Food Plants for Caterpillars:

- Trees...**  
Douglas fir (*Pseudotsuga menziesii*)  
Pines (*Pinus* spp.)
- Garden Flowers and Ground Covers...**  
Hollyhock (*Alcea rosea*)  
Kinnikinnik (*Arctostaphylos uva-ursi*)
- Vegetables...**  
broccoli, cabbage (*Brassica oleraceae* var.)  
beans (*Phaseolu vulgaris* var.)  
carrot, dill, fennel, parsley (*Umbelliferae* family)

## Caterpillar Benefited:

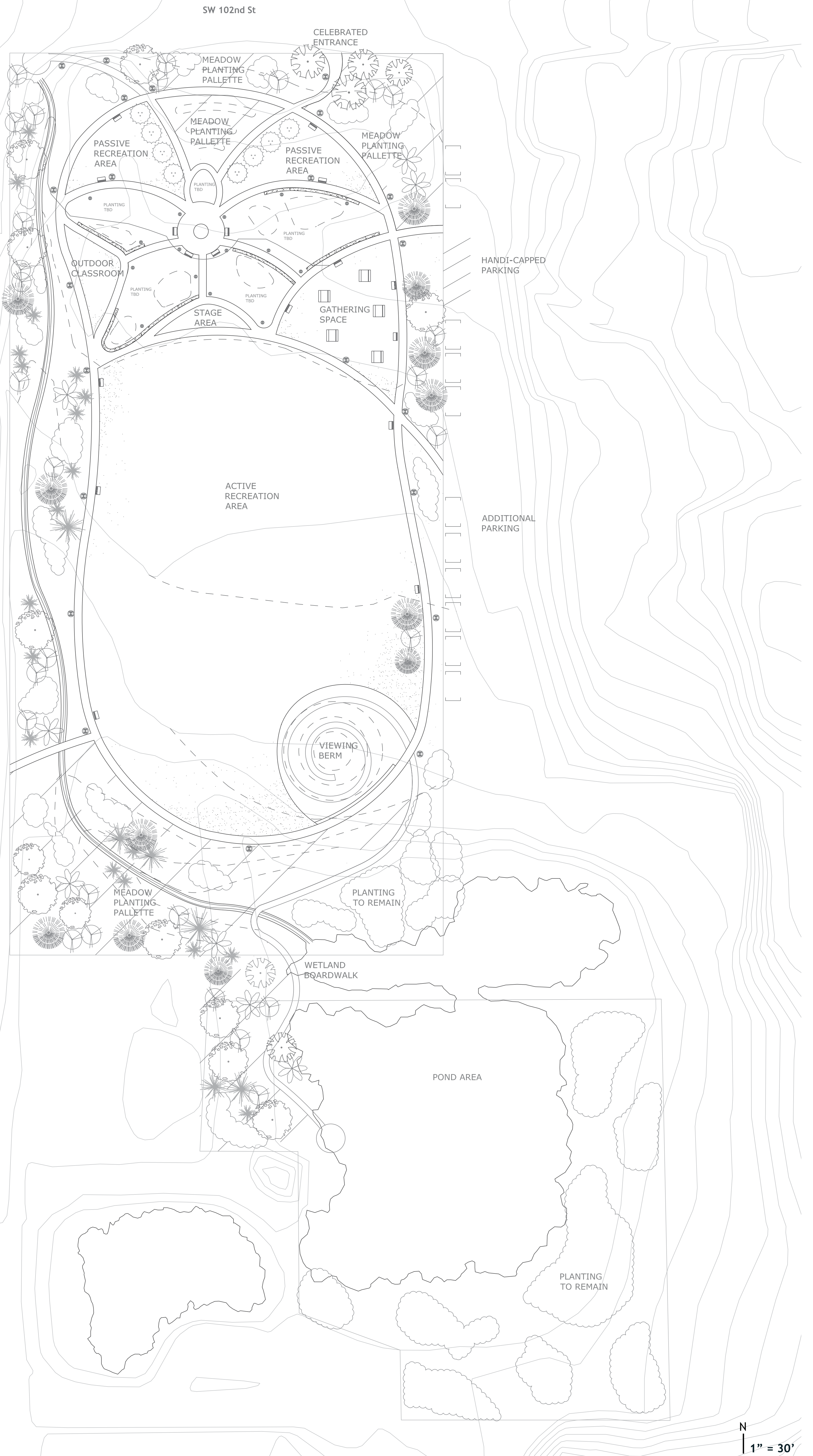
- pine white
- painted lady, west coast lady
- spring azure, brown elfin
- cabbage white
- gray hairstreak
- anise swallowtail

## Flowering Plant for Butterflies:

- Native to Western Washington...**  
mock orange (*Philadelphus lewisii*)  
mountain balm (*Ceanothus velutinus*)  
pearly everlasting (*Anaphalis margaritacea*)
- Garden Shrubs...**  
butterfly bush (*Buddleia davidii*)  
lilac (*Syringa vulgaris*)  
viburnum (*Viburnum carlesii*)
- Garden Flowers...**  
bee balm (*Monarda didyma*)  
black-eyed Susan (*Rudbeckia fulgida*)  
lavender (*Lavandula angustifolia*)  
phlox (*Phlox paniculata*)  
purple cornflower (*Echinacea purpurea*)

## Bloom Time:

- June/July
- April/May
- August/September
- All summer
- April/May
- April/May
- June/July
- All Summer
- June/July
- June- August
- July- September



# schematic design

## metamorphosis of white center heights park

# White Center Heights Park

L ARCH 474 Project Design Studio | Winter 2007 |  
Department of Landscape Architecture, University of Washington

