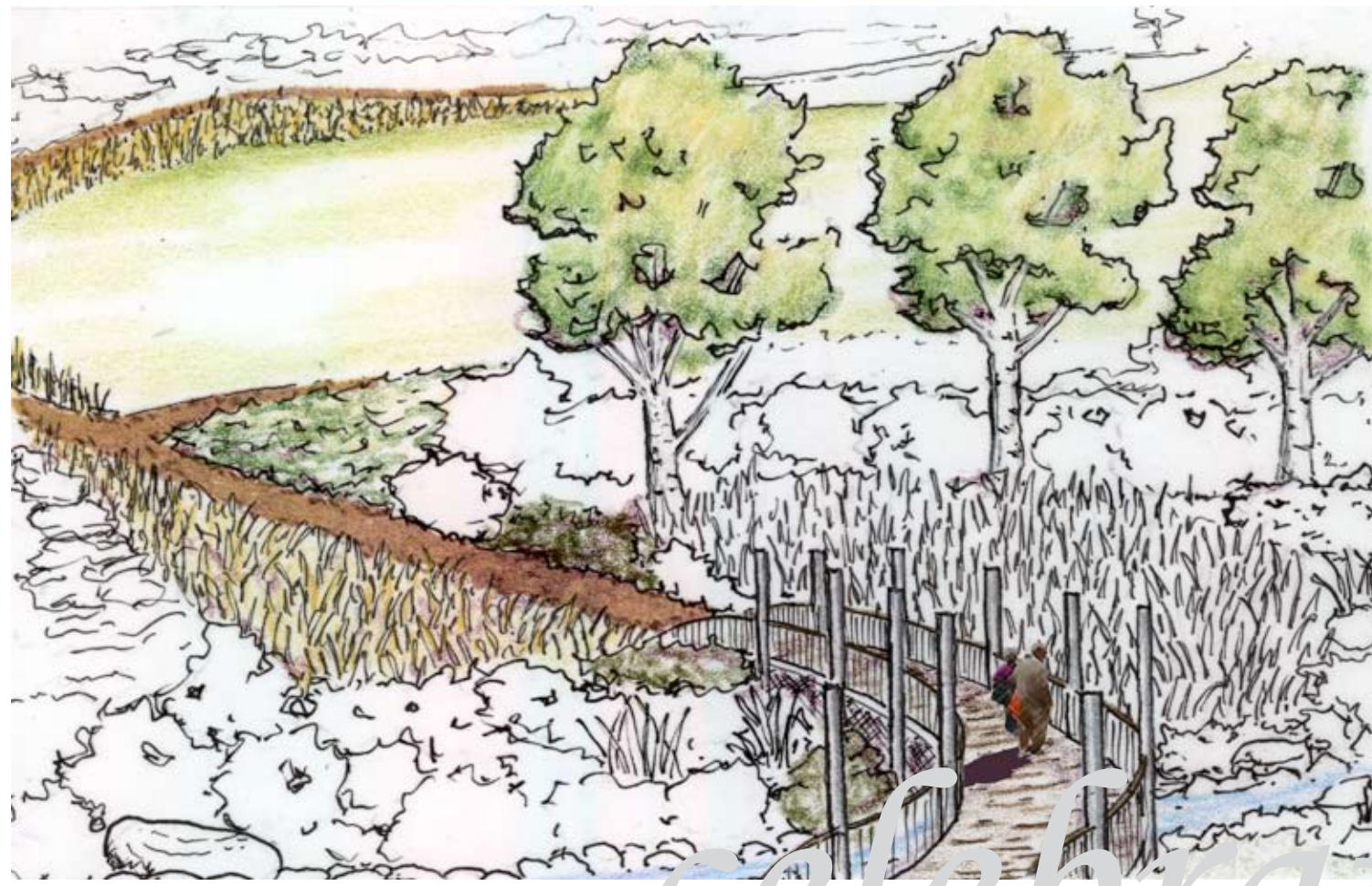


Convergence: Connecting Community and Ecology



gather



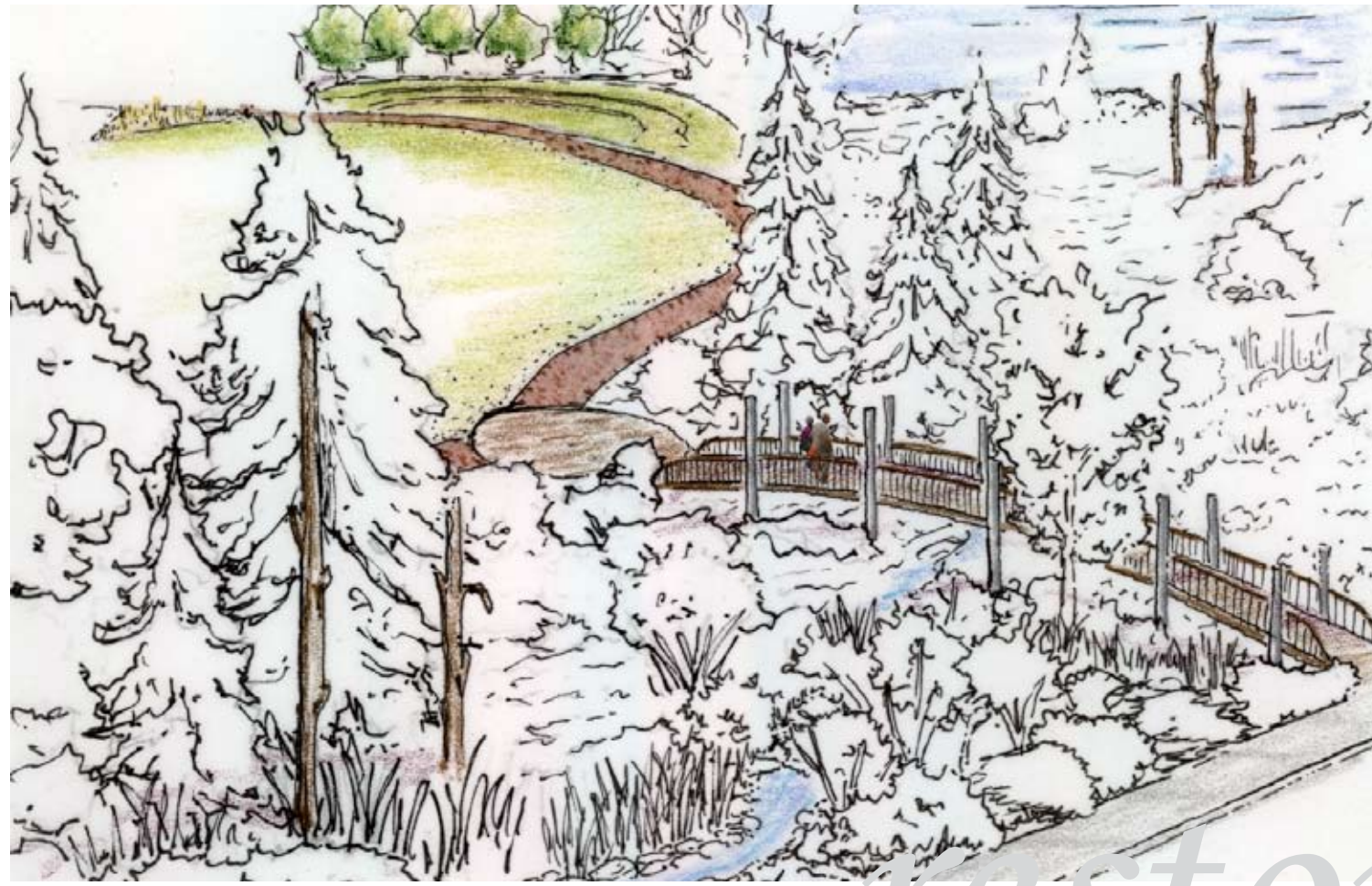
celebrate

The convergence of community and the ecology is the driving force behind the design. Although it is difficult to meld nature into the urban fabric it is essential. This park succeeds in creating a place that community members feel safe, comfortable, and where they enjoy meeting their neighbors. Children have multiple opportunities to play, from climbing on boulders to swinging and field sports. These examples serve to activate the park, but they are not the principle focus. Allowing the community to take ownership of the park through education and involvement ensure it's success. Neighborhood organized invasive plant removal days along with general clean-up days produce the type of space that is celebrated for many years to come. Therefore, it is through design that the convergence of the community of White Center begins to take care of the sensitivities of this park. These wetlands are beautiful places that are the home to a host of plant and animal species that depend on healthy environments. By connecting the community to the wetlands in the park, more can be done to create a healthy and sustainable White Center.

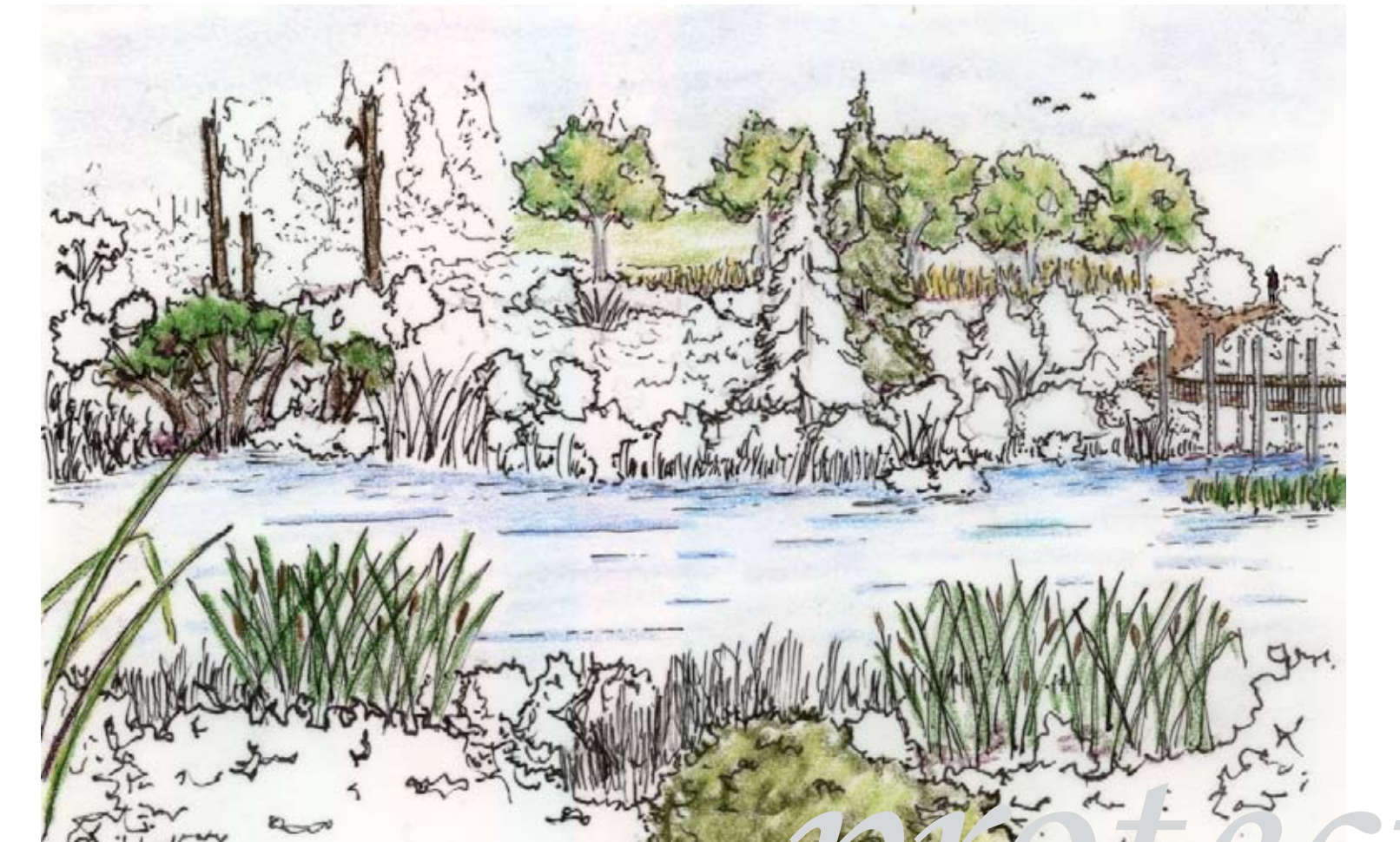
concept



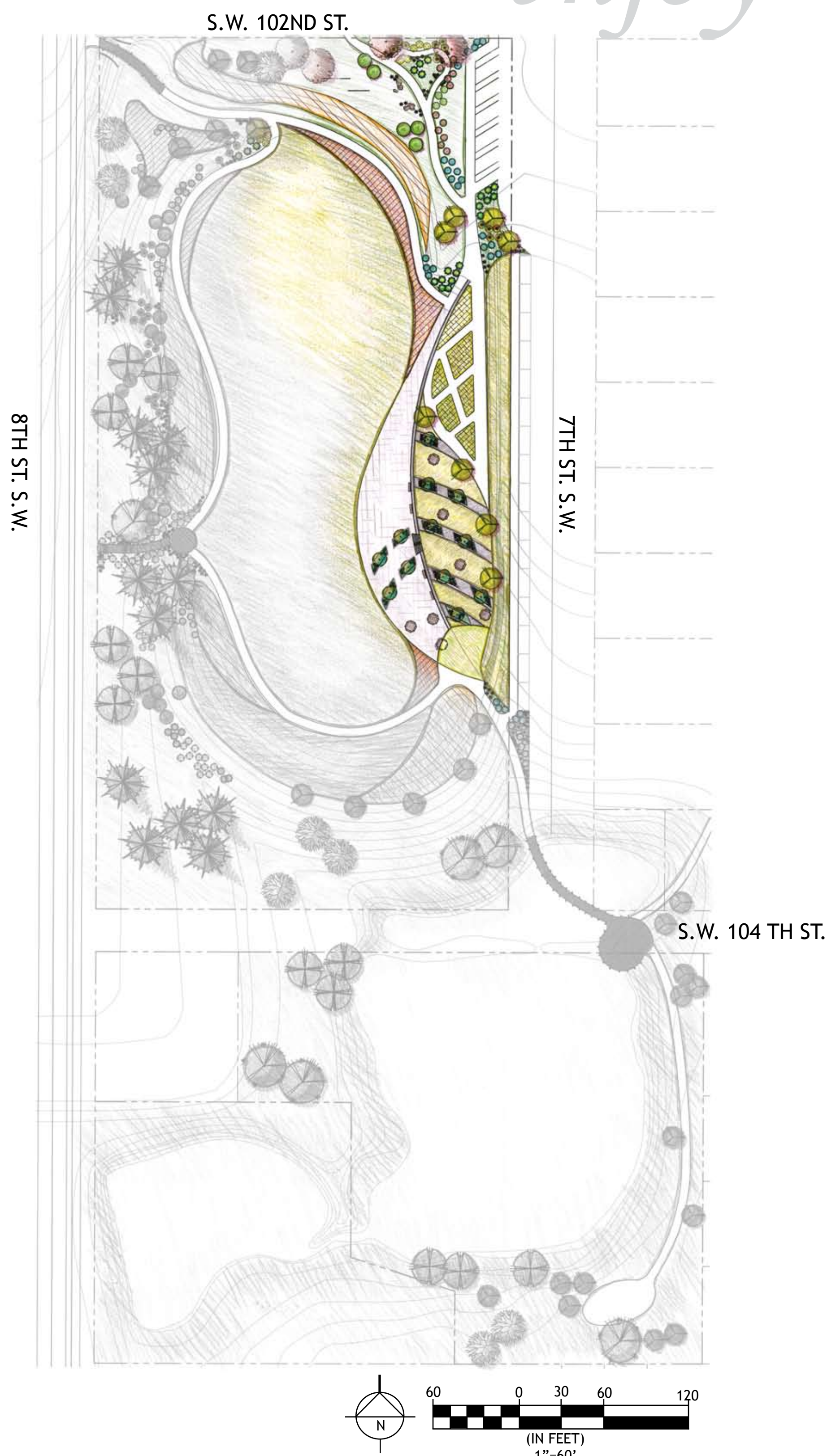
enjoy



restore



protect



phase 1 (June 2007)

The focus for phase 1 is implementation of the community gathering space. This portion of the site will comprise the most active elements of the design. Included in this phase is an ADA accessible entrance with accessible and parallel parking. The multi-level gathering space consists of a green roof shelter, a community garden, a paved patio section for various activities, picnic tables, barbecue pits, a lawn space with planters, and the main feature of the site, a mosaic water wall. This is a flexible space, which will allow for a variety of activities so that the community can use the park to meet their individual needs.

Another feature of phase 1 is a woodland playground with climbing boulders, swings, and a native vegetation garden with interpretive signage. A portion of the open playfield will also be developed in this phase.



phase 2 (2008-2009)

One of the main additions to the park in phase 2 is the creation of a celebrated entrance on the corner of S.W. 102ND ST. and 8TH AVE. S.W.. A modification in grading allows for park users to enter the park via a slightly elevated boardwalk, which gives users a view across the park. Another feature is the enhancement/creation of a bioswale on the western edge of the park, which also serves as an educational opportunity for the community. The swale is planted with low maintenance native vegetation, which will increase the ecological functions of the swale. There also is a trail which borders the bioswale to give users visual access to the swale.

Another crucial element of phase 2 is the creation of the open playfield and berms surrounding the field. The open field will function as a flexible space which can be used for numerous activities. To the south of the field, there is a berm amphitheatre for relaxing and watching the activity on the field. Around the playfield are berms, which are planted with a variety of meadow grasses. These grasses add visual interest, prevent balls from going into the bioswale, and serve as a transition into the less built environment.



phase 3 (2010-2015)

The final element of this concept takes center stage in phase 3. The transition and convergence of the urban and natural environment culminates at the southern end of the park. This phase focuses on removing invasive species and increasing the habitat value of the wetland. Park visitors are encouraged to appreciate and experience the wetland through the installment of a low-impact boardwalk and viewing platform. Opportunities for education are incorporated by including an outdoor classroom for creative and interpretive learning.

New access points connect previously inaccessible entrances to the park from 7TH AVE S.W. and S.W. 104TH ST.

[design concept & project phasing]

White Center Heights Park

