

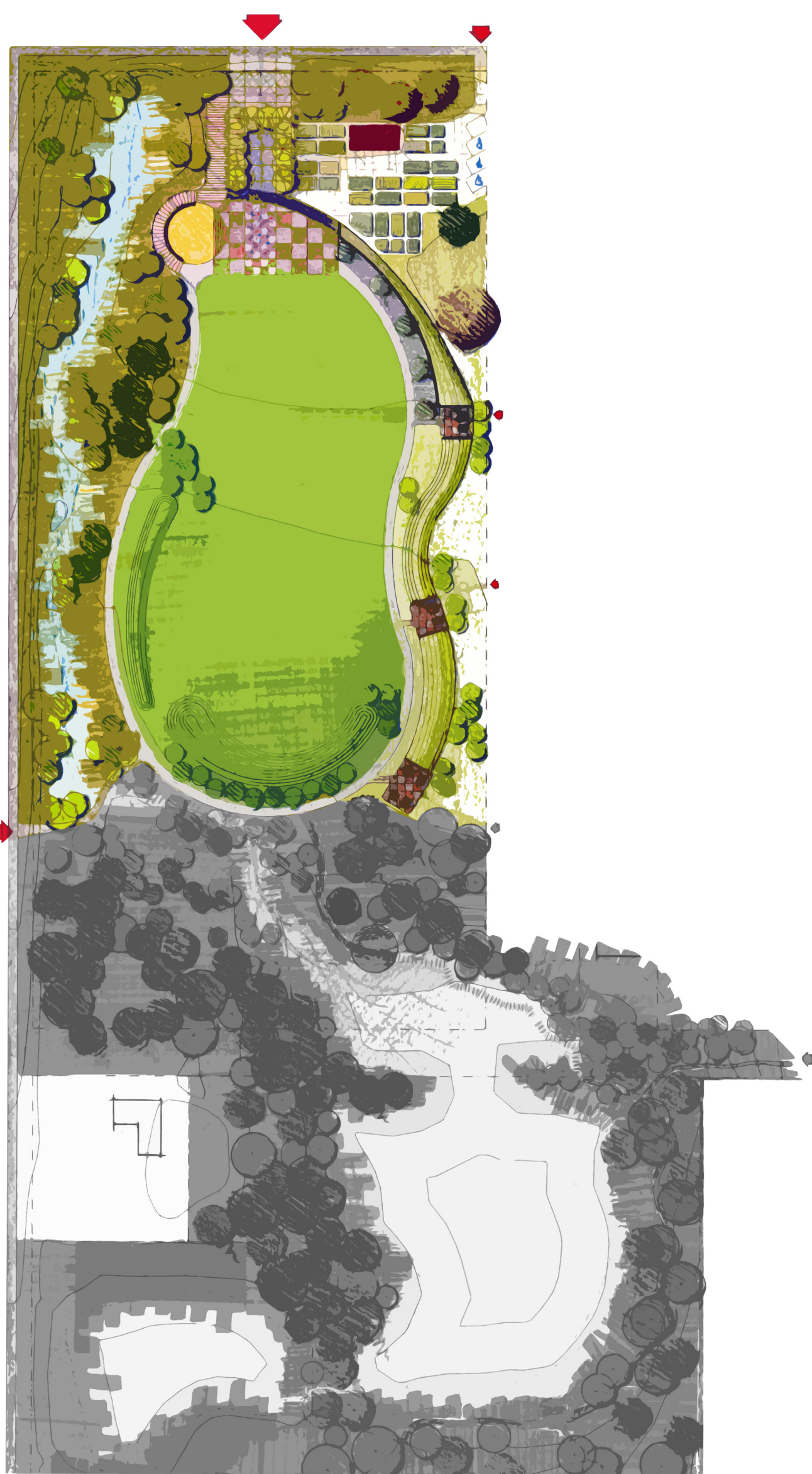
White Center Community Park



Agriculture is common to all cultures around the world. As the White Center Neighborhood represents over 70 languages, finding common ground is essential to cultivating a strong community park.

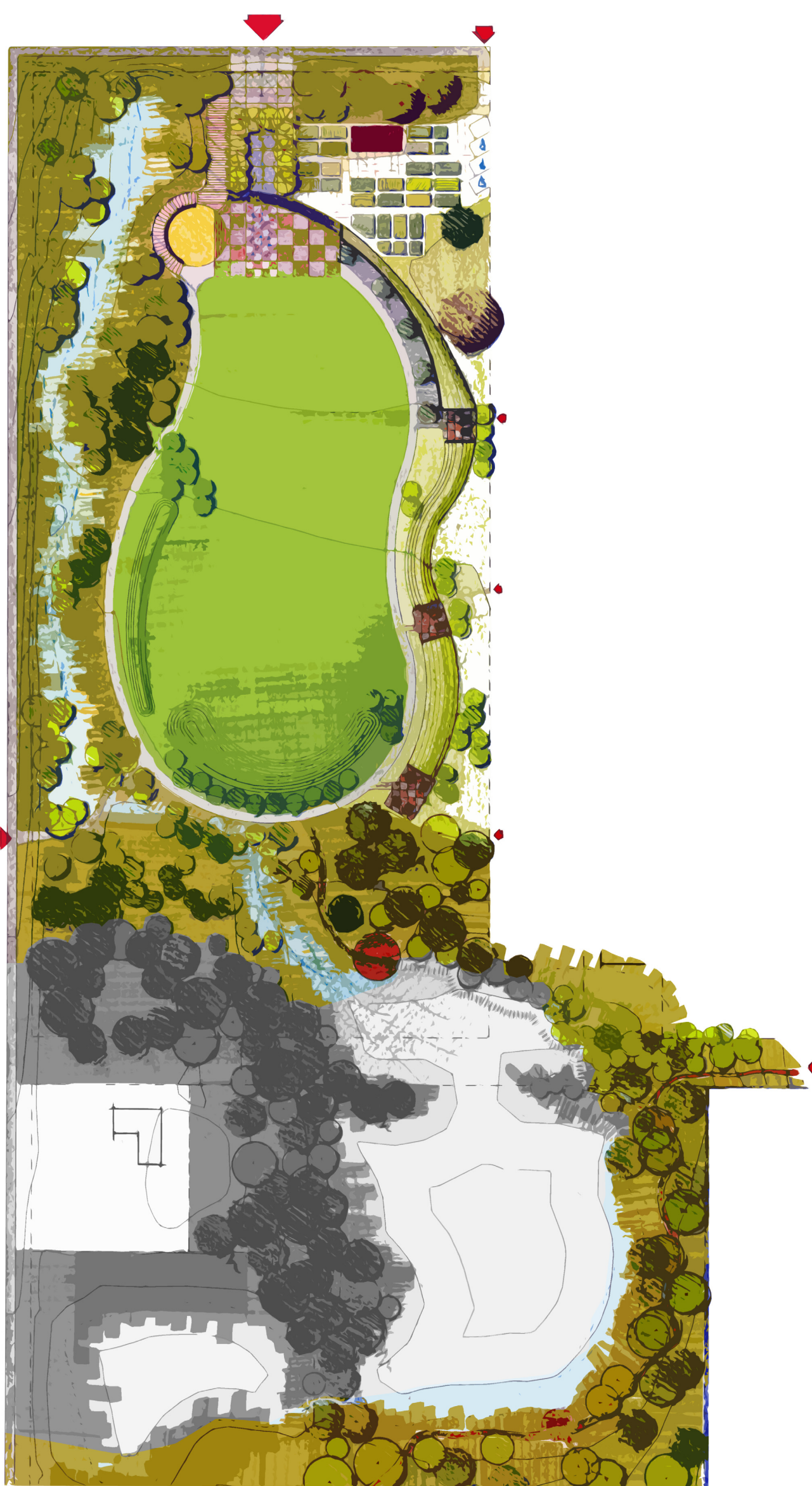
The organizing principle of this park follows a grid pattern that produces a mosaic of spaces, which serve a diverse type of users. Different cultures use public space in a variety of ways, and the flexibility of spaces throughout this design promote community interaction and celebration. Various sized spaces respond to the need for holding large cultural gatherings as well as passive recreation.

This park breaks through cultural boundaries and serves as a canvas for the White Center community to explore its own identity.



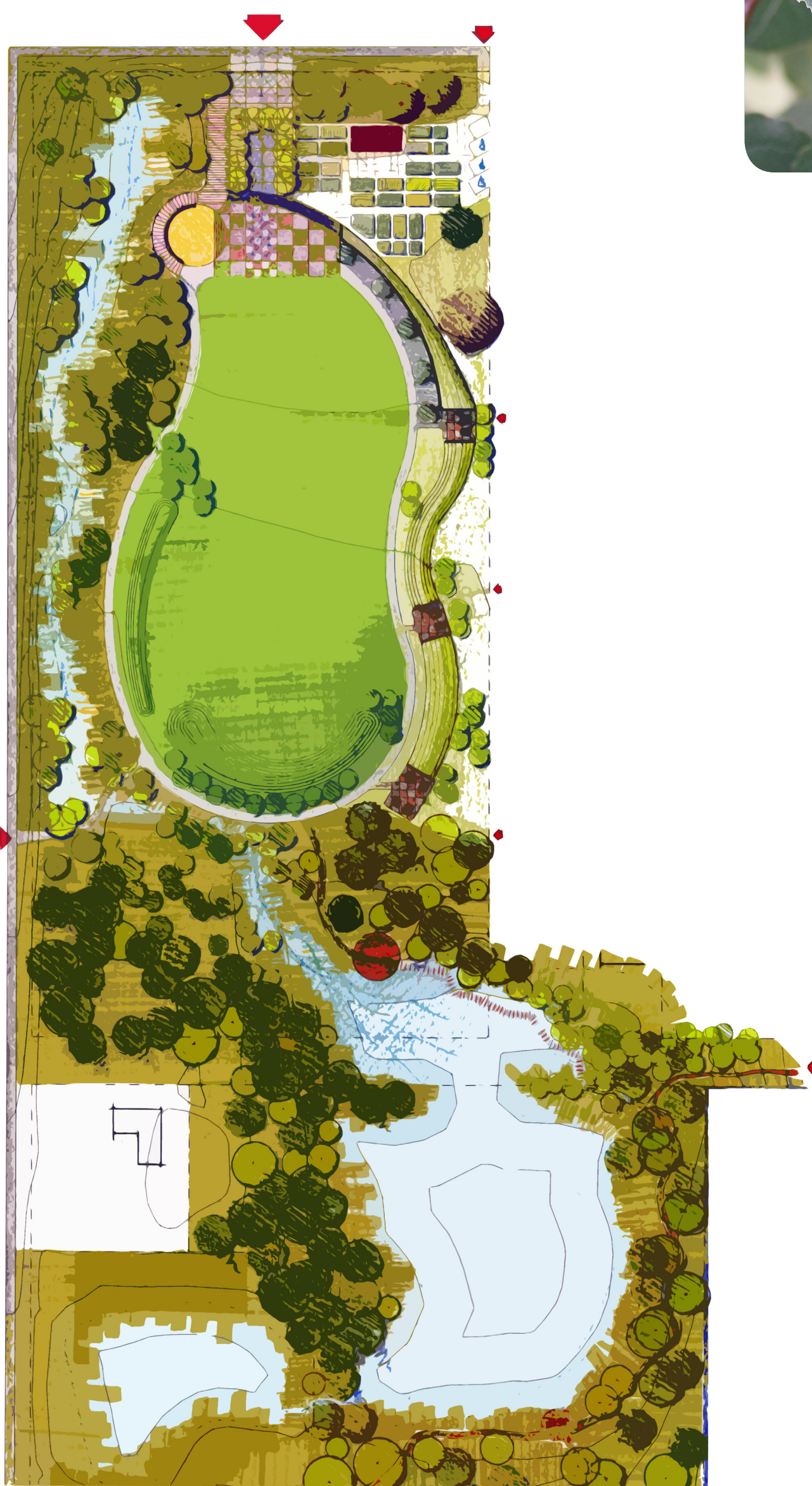
phase 1 (June 2007)

- clear border
- remove invasives and plant natives to restore swale border
- entry
- main plaza paving and planting
- playground area
- spray ground with community art integrated.
- community garden basic layout
- re-grading of entire Northern section
- re-grade buffer mounds on the East border
- picnic spaces
- planting around active areas
- install educational signage



phase 2 (2008-2009)

- restore wetland and pond with native species
- create buffer zones around Green's Pond
- pond overlook and nature trails
- secondary entrance into South East edge of park
- build wetland outlook
- secondary gateways
- community garden evolves into personalized spaces



phase 3 (2010-2015)

- construct boardwalk
- educational signage along secondary paths
- allow the park to be personalized by the community members through art projects and various detailed spaces

design concept & project phasing

Communtiy Canvas

White Center Heights Park

L ARCH 474 Project Design Studio | Winter 2007 |
Department of Landscape Architecture, University of Washington

