

Plant Propagation Protocol for *Antennaria suffrutescens*

ESRM 412 – Native Plant Production

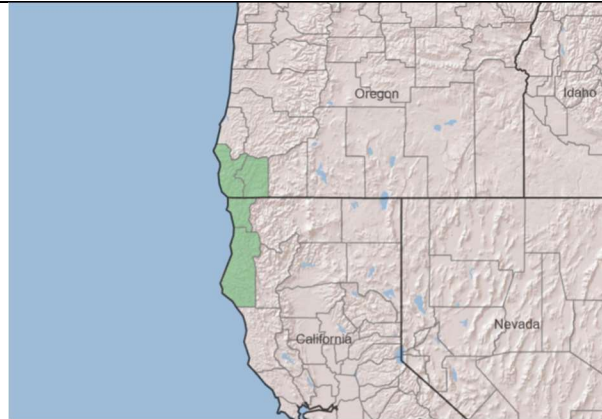
URL: <https://courses.washington.edu/esrm412/protocols/2023/ANSU3.pdf>

TAXONOMY

Plant Family	
Scientific Name	<i>Antennaria suffrutescens</i>
Common Name	Evergreen Pussytoes
Species Scientific Name	
Scientific Name	<i>Antennaria suffrutescens</i> Greene
Varieties	n/a
Sub-species	n/a
Cultivar	n/a
Common Synonym(s)	n/a
Common Name(s)	Evergreen everlasting, everlasting pussytoes, shrubby pussytoes, Siskiyou everlasting
Species Code (as per USDA Plants database)	ANSU3

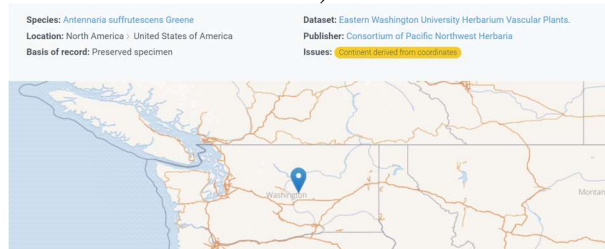
GENERAL INFORMATION

Geographical range



(Image: USDA Plants)

Narrow geographical range spanning northwest California and southwestern Oregon. (USDA) Known to Curry and Josephine counties, Oregon, and Del Norte and Humboldt counties, California (R. J. Bayer and G. L. Stebbins 1987).



(Image: Global Biodiversity Information Facility)

One recorded presence in Washington in Grant County (with some uncertainty) (GBIF)

Ecological distribution	Dry, open coniferous woods or barren slopes on serpentine soil (Flora of North America). Considered to have limited distribution by California (CalFlora)
Climate and elevation range	Mainly coastal environments from 500m to 1600m in elevation (Flora of North America)
Local habitat and abundance	Yellow Pine Forests (GBIF), West Virginia Lady Butterflies (as a host plant) (CalFlora)
Plant strategy type / successional stage	Stress tolerator (drought tolerant)
Plant characteristics	Perennial herb; dioicous; suffrutescent growth form; coriaceous leaves (Floras of North America)
PROPAGATION DETAILS	
Ecotype	Glacier National Park, Montana Details based on propagation protocol for <i>Antennaria howellii</i> (Fern.) Bayer/ <i>Antennaria neglecta</i> Greene which grows at a similar elevation and climate Source: Luna et al., 2008
Propagation Goal	Plants/plugs
Propagation Method	Seed
Product Type	Container/plug
Stock Type	172 mL container
Time to Grow	4 months
Target Specifications	3cm height, 10 to 15 true leaves, firm root system
Propagule Collection Instructions	Flowering occurs in early summer (May, June); collect seeds from the white flower heads (Floras of N. America)
Propagule Processing/Propagule Characteristics	14,520,000 seeds/kg
Pre-Planting Propagule Treatments	Seeds cleaned with a hammermill; Longevity is up to 5 years when held at 1 C; non dormant seeds;
Growing Area Preparation / Annual Practices for Perennial Crops	Greenhouse or outdoor growing facility; 172 mL container; Media: 6:1:1 milled sphagnum peat, perlite, and vermiculite
Establishment Phase Details	Germinate more slowly than other forbs/herbs; it may be beneficial to fluctuate temperatures in greenhouse or grow outdoors; seedlings thinned after appearance of leaves
Length of Establishment Phase	4 weeks
Active Growth Phase	Develop rapid roots and shoots 2-4 weeks after germinating; fertilize with 20-20-20 NPK biweekly; plants are mat forming and may fill container during rapid growth
Length of Active Growth Phase	8 weeks

Hardening Phase	Plants fertilized with 10-20-20 liquid NPK in early fall; pots are leached and irrigation is reduced in September/October
Length of Hardening Phase	4 weeks
Harvesting, Storage and Shipping	Harvest in July; storage in outdoor nursery under insulating foam cover during winter
Length of Storage	5 months
Guidelines for Outplanting / Performance on Typical Sites	n/a
Other Comments	Seeds require light for germination; if direct seeding, seeds must be rolled or pressed into ground
INFORMATION SOURCES	
References	<p>Luna, Tara; Evans, Jeff; Wick, Dale; Hosokawa, Joy. 2008. Propagation protocol for production of Container (plug) <i>Antennaria howellii</i> (Fern.) Bayer. plants 172 ml container; USDI NPS - Glacier National Park West Glacier, Montana.</p> <p>Kartesz, J. 2023. “<i>Antennaria suffrutescens</i> Greene.” USDA NRCS National Plant Data Team</p> <p>Flora of North America. “<i>Antennaria suffrutescens</i> Greene, Pittonia. 3: 277. 1898.” Flora of North America. www.eFloras.org</p> <p>CalFlora. “<i>Antennaria suffrutescens</i> Greene.” CalFlora, a 501c3 nonprofit. https://www.calflora.org/app/taxon?crn=389</p> <p><i>Antennaria suffrutescens</i> Greene in GBIF Secretariat (2022). GBIF Backbone Taxonomy. Checklist dataset https://doi.org/10.15468/39omei accessed via GBIF.org on 2023-05-23.</p>
Other Sources Consulted	California Native Plant Link Exchange. “ <i>Antennaria suffrutescens</i> Greene. Evergreen Pussytoes.” CNPLE.
Protocol Author	Kyle Yasui
Date Protocol Created	05/23/2023