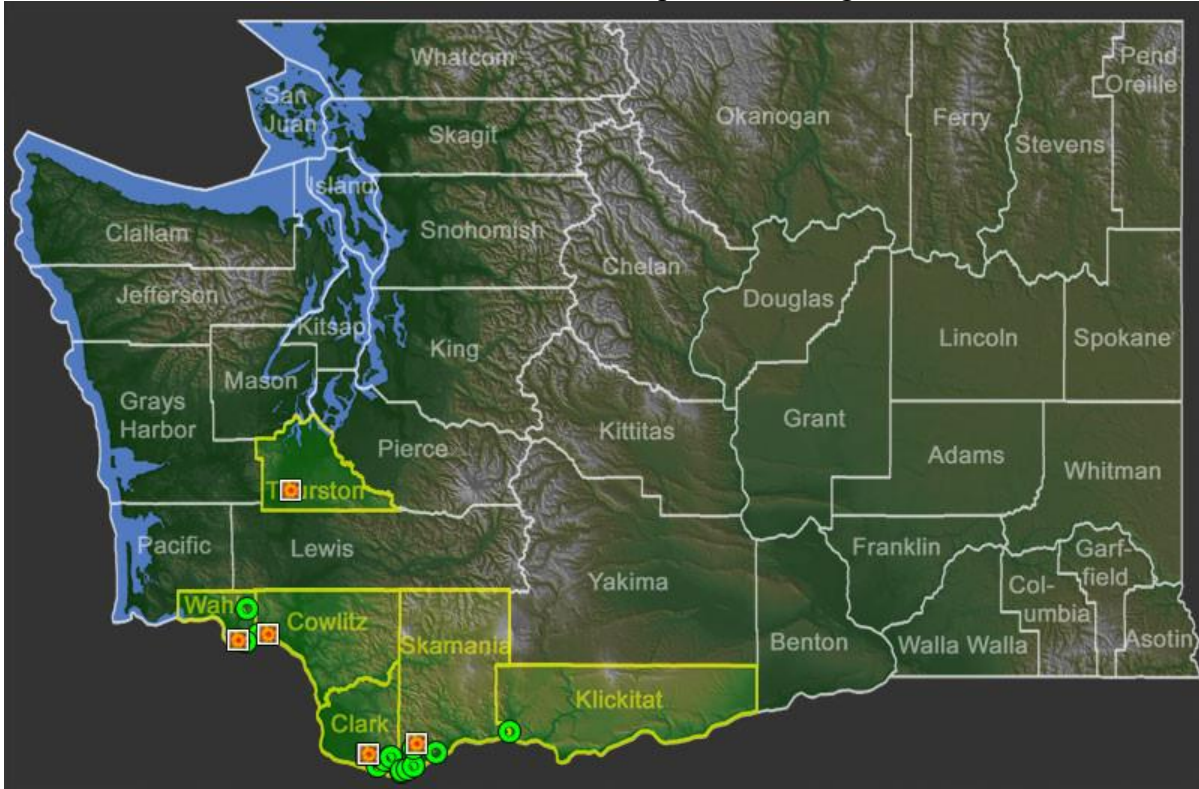


Plant Propagation Protocol for *Delphinium trolliifolium* A. Gray

ESRM 412 – Native Plant Production

URL: <https://courses.washington.edu/esrm412/protocols/2025/DETR2.pdf>

Distribution of Columbian Larkspur in Washington State



Knoke & Giblin 2024



Giblin, 2021a&b

TAXONOMY	
Plant Family	
Scientific Name	<i>Ranunculaceae</i> Juss.
Common Name	Buttercup family
Species Scientific Name	
Scientific Name	<i>Delphinium trolliifolium</i> A. Gray
Varieties	No varieties reported
Sub-species	No sub-species reported
Common Synonym(s)	N/A
Common Name(s)	Columbian larkspur, poison larkspur, cow poison, giant larkspur
Species Code (as per USDA Plants database)	DETR2
GENERAL INFORMATION	
Geographical range	West of the cascade range from southern Washington state to Northern California.
Ecological distribution	Oak woods, coastal chaparral, wet woodlands (NW Wildflowers).
Climate and elevation range	30--1100 m (Koontz & Warnock 2012).
Local habitat and abundance	Common in moist shady areas of its native range, never dry. Common associates are Oregon Ash (<i>Fraxinus latifolius</i>), Oregon white oak (<i>Quercus garryana</i>), Cow Parsnip (<i>Hieracleum maximum</i>), and great Camas (<i>Camassia leichtlinii</i>) (Xera Plants).
Plant strategy type / successional stage	Flood-tolerant
Plant characteristics	Deciduous perennial forb
PROPAGATION DETAILS	
Seed Propagation	
Ecotype	N/A
Propagation Goal	Plants
Propagation Method	Seed
Product Type	Container
Stock Type	Container
Time to Grow	5-6 weeks post germ, seedlings can be brought outside for fall planting.
Target Specifications	Flowering plants
Propagule Collection Instructions	Early-mid summer, post-flowering, collect dried seed pods from racemes and store in cool, dry, dark paper bags until ready for cold stratification
Propagule Processing/Propagule Characteristics	Not documented
Pre-Planting Propagule Treatments	Seeds must go through cold stratification for about 12 weeks to germinate (Bassett).

Growing Area Preparation / Annual Practices for Perennial Crops	Growing media should be high in humus, well-draining, and moist.
Establishment Phase Details	Keep soil moist but well-drained. Feed regularly with fertilizer (10-10-10 mix should work).
Length of Establishment Phase	Variable depending on cold stratification methods
Active Growth Phase	Keep soil moist but well-drained. Feed regularly with fertilizer (10-10-10 mix should work). Flower stems are not particularly strong, tying stems to support systems may be necessary to prevent breakage (Bassett).
Length of Active Growth Phase	Spring-Fall
Hardening Phase	Maintain in greenhouse or cold frame until too tall or last frost has passed. Move outdoors to prepare for fall outplanting (Bassett).
Length of Hardening Phase	Summer
Harvesting, Storage and Shipping	Not documented
Length of Storage	Not documented
Guidelines for Outplanting / Performance on Typical Sites	Roots are very delicate and resistant to transplanting. Without strong root tubers, the plant will not likely succeed at a new site.
Other Comments	As indicated by its common names, <i>D. trolliifolium</i> is poisonous if consumed by mammals.
INFORMATION SOURCES	
References	See below
Other Sources Consulted	See below
Protocol Author	Emmaline Sampson-Eves
Date Protocol Created or Updated	27 May 2025

References

Basset, D. (2000). *Delphinium trolliifolium development*. Care4free.net.

<http://www.david.bassett.care4free.net/topics4/trolliifolium.htm>

Delphinium trolliifolium | Cow Poison | *Wildflowers of the Pacific Northwest*. (2025).

Pnwflowers.com. <https://www.pnwflowers.com/flower/delphinium-trolliifolium>

Delphinium trolliifolium - *Xera Plants*. (2023, May 16). Xera Plants.

<https://xeraplants.com/plants/delphinium-trolliifolium/>

Giblin, D. (2021a). [Photo]. In *Burkeherbarium.org*.

<https://burkeherbarium.org/imagecollection/wtu111000/md/wtu111292.jpg>

Giblin, D. (2021b). [Photo]. In *Burkeherbarium.org*.

<https://burkeherbarium.org/imagecollection/wtu111000/md/wtu111313.jpg>

Knoke, D., & Giblin, D. (2024). *Delphinium trolliifolium* - *Burke Herbarium Image Collection*.

Burkeherbarium.org.

<https://burkeherbarium.org/imagecollection/taxon.php?Taxon=Delphinium+trolliifolium>

Koontz, J. A., & Warnock, M. J. (2012). *Delphinium trolliifolium*. Berkeley.edu.

https://ucjeps.berkeley.edu/eflora/eflora_display.php?tid=22528

Other Sources Consulted

Delphinium trolliifolium - *FNA*. (2020). *Floranorthamerica.org*.

https://floranorthamerica.org/Delphinium_trolliifolium

How to Grow and Care for Columbian larkspur. (n.d.). *PictureThis*.

https://www.picturethisai.com/care/Delphinium_trolliifolium.html

OregonFlora. (2025). *Oregonflora.org*. <https://oregonflora.org/taxa/garden.php?taxon=4520>

Poison Larkspur (*Delphinium trolliifolium*). (2025, April 13). *Friends of Silver Falls*. Friends of

Silver Falls. [https://www.friendsofsilverfalls.net/wildflowers-of-silver-falls-1/poison-](https://www.friendsofsilverfalls.net/wildflowers-of-silver-falls-1/poison-larkspur-delphinium-trolliifolium)

[larkspur-delphinium-trolliifolium](https://www.friendsofsilverfalls.net/wildflowers-of-silver-falls-1/poison-larkspur-delphinium-trolliifolium)

USDA Plants Database. (2025). *Usda.gov*. <https://plants.usda.gov/plant-profile/DETR2>