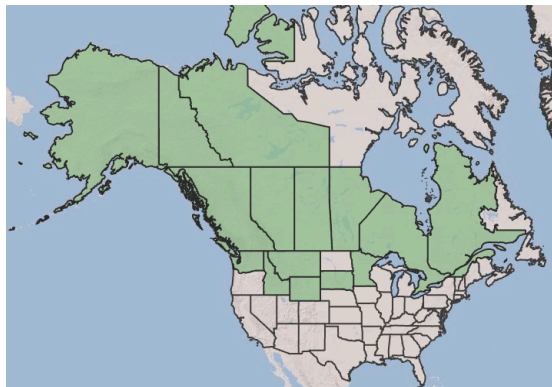


Plant Propagation Protocol for *Salix Pseudomonticola*

ESRM 412 – Native Plant Production

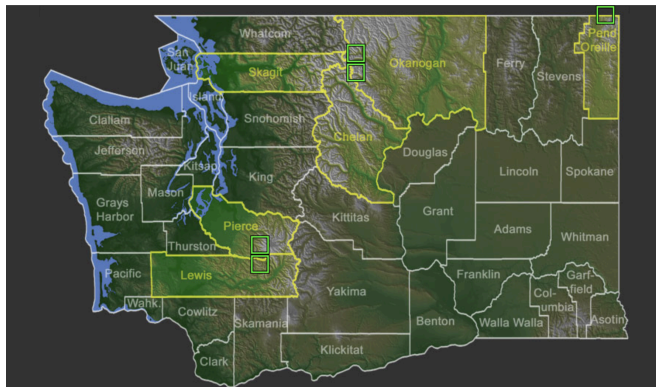
URL: <https://courses.washington.edu/esrm412/protocols/2026/SAPS.pdf>

North America Geographical Range



Sources: USDA PLANTS Database

Washington Geographical Range



Burke Herbarium Image Collection

TAXONOMY	
Plant Family	
Scientific Name	<i>Salicaceae</i> Mirb.
Common Name	Willow family
Species Scientific Name	
Scientific Name	<i>Salix pseudomonticola</i> C.R. Ball
Varieties	
Sub-species	
Cultivar	
Common Synonym(s)	<i>Salix barclayi</i> Andersson var. <i>pseudomonticola</i> (C.R. Ball) Kelso
Common Name(s)	false mountain willow
Species Code	SAPS
GENERAL INFORMATION	
Geographical range	Distributed throughout Alaska and Canada, as well as Washington, Idaho, Montana, South Dakota, and Minnesota (see maps above). ¹ In Washington, the species has been found in multiple counties, shown in the map above, ranging throughout the state. ²
Ecological distribution	Found in montane to lower sub-alpine zones, along stream banks, wet meadows, floodplains, wet prairies, and swamps. ^{3,4}
Climate and elevation range	Elevations range from around 0 to 2,500 meters in a primarily cool temperate and montane boreal climate. ⁵

Local habitat and abundance	Found on both sides of the Cascade crest in Washington, has a sensitive conservation status, and limited data on the abundance and precise locations of Washington populations due to its rarity and conservation concerns. ²⁶ <i>Salix pseudomonticola</i> can be typically found near the presence of <i>S. discolor</i> (pussy willow), <i>S. bebbiana</i> (Bebb's willow), and <i>S. eriocephala</i> (heart-leaved willow). ⁷
Plant strategy type / successional stage	There is no specified information regarding the plant strategy type/successional stage of <i>Salix pseudomonticola</i> . However, based on available information, the species' assumed high seed mortality rate, rare yet well-established populations ⁷ , and its ability to withstand high disturbance within its ecosystem distribution ⁴ suggest it is a stress-tolerant, early-successional species.
Plant characteristics	<i>Salix pseudomonticola</i> is a perennial shrub, growing 3-12 feet tall ⁴ , and can be recognized in the field by its large stipules, brown/black twigs ⁸ , and finely serrated leaves, which are red during the juvenile period. ⁷⁹ Animals serve as pollinators for the species. ³
PROPAGATION DETAILS: VEGETATIVE (based on protocol of <i>Salix lucida</i>)	
Ecotype	
Propagation Goal	Plants
Propagation Method	Vegetative
Product Type	Bareroot (field-grown)
Stock Type	1+0
Time to Grow	1 year
Target Specifications	Well-developed root system and around 12 inches of height above ground. ¹⁰
Propagule Collection Instructions	Cuttings should be collected from stool beds or native, established populations during the winter prior to leaf development. Cuttings should be about 8-10 inches long. ¹⁰
Propagule Processing/Propagule Characteristics	Cuttings should be wrapped, bundled, and stored in a cooler until outplanting. ¹⁰¹¹
Pre-Planting Propagule Treatments	Before outplanting, the cuttings should be soaked for 5-7 days to rehydrate. ¹²
Growing Area Preparation / Annual Practices for Perennial Crops	<i>Salix pseudomonticola</i> thrives in wet or moistened mineral soil and peat under full sunlight. ⁷⁴
Establishment Phase Details	During early spring, cuttings should be placed by hand into field beds to a depth of around 6 inches. ¹⁰ Air

	pockets should be removed by firming the soil surface and irrigating after. ¹⁰¹²
Length of Establishment Phase	Approximately 1 month following initial rooting. ¹⁰
Active Growth Phase	Irrigation should be applied regularly and as needed to maintain moist soil and support plant growth. Fertilizer can also be applied as needed, but not when the soil is wet. ¹⁰
Length of Active Growth Phase	Around 4 months. ⁷
Hardening Phase	Hardening begins during late summer to early fall. Irrigation and fertilizer practices should be reduced to mimic those of the species habitat.
Length of Hardening Phase	Around 1 month. ¹⁰
Harvesting, Storage and Shipping	Cuttings should be completely dormant around mid-November, and they can then be hand-lifted and removed from the beds, transported to sandy soils, and bundled until early spring. ¹⁰ During their storage, they can be kept in a cooler at around 36 to 42 degrees. ¹⁰
Length of Storage	Although no universal information is available on seedling longevity, they are recommended to be stored for 4-6 weeks to remain viable. ¹⁰¹²
Guidelines for Outplanting / Performance on Typical Sites	No information is available on typical site performance for <i>Salix pseudomonticola</i> .
Other Comments	
INFORMATION SOURCES	
References	See list below
Other Sources Consulted	
Protocol Author	Greta Ardern
Date Protocol Created or Updated	05/22/2026

References

¹USDA Plants Database. (2026). Usda.gov. <https://plants.sc.egov.usda.gov/plant-profile/SAPS>

²Burke, H. (2026). *Salix pseudomonticola* map - Burke Herbarium Image Collection. [Burkeherbarium.org](https://www.burkeherbarium.org).
<https://www.burkeherbarium.org/imagecollection/taxonmap.php?Taxon=Salix%20pseudomonticola&SourcePage=taxon>

³Washington Field Guide. (2026). Mt.gov; Washington Field Guide. <https://fieldguide.mt.gov/wa/?species=salix%20pseudomonticola>

⁴Salix pseudomonticola (False Mountain Willow): Minnesota Wildflowers. (2026). Minnesotawildflowers.info.

<https://www.minnesotawildflowers.info/shrub/false-mountain-willow>

⁵NatureServe Explorer 2.0. (2026). Natureserve.org.

https://explorer.natureserve.org/Taxon/ELEMENT_GLOBAL.2.152323/Salix_pseudomonticola

⁶Klinkenberg, B. (2020). *E-Flora BC Atlas Page*. Geog.ubc.ca.

<https://linnet.geog.ubc.ca/Atlas/Atlas.aspx?sciname=Salix%20pseudomonticola&noTransfer=0>

⁷Smith, W. (2026, February 20). *Minnesota DNR - MN Department of Natural Resources*. Minnesota Department of Natural Resources.

<https://www.dnr.state.mn.us/rsg/profile.html?action=elementDetail&selectedElement=PDSAL022E0>

⁸MTNHP. (2026). *False Mountain Willow - Montana Field Guide*. Mt.gov; Natural Heritage Program and Montana Fish, Wildlife & Parks.

<https://fieldguide.mt.gov/speciesDetail.aspx?elcode=PDSAL022E0>

⁹False mountain willow. (2026). AWES | Agroforestry and Woodlot Extension Society of Alberta. <https://www.awes-ab.ca/species/false-mountain-willow/>

¹⁰Zeidler, S. (2026). *Salicaceae (Salix) — Reforestation, Nurseries and Genetics Resources*. Rngr.net. <https://rngnet.net/npn/propagation/protocols/salicaceae-salix-2712>

¹¹Bonner, F. (2008). *The Woody Plant Seed Manual*.

https://www.fs.usda.gov/rm/pubs_series/wo/wo_ah727.pdf

¹²Stevens, M. (n.d.). *SHINING WILLOW Salix lucida Muhl.*

https://plants.sc.egov.usda.gov/DocumentLibrary/plantguide/pdf/pg_salu.pdf

