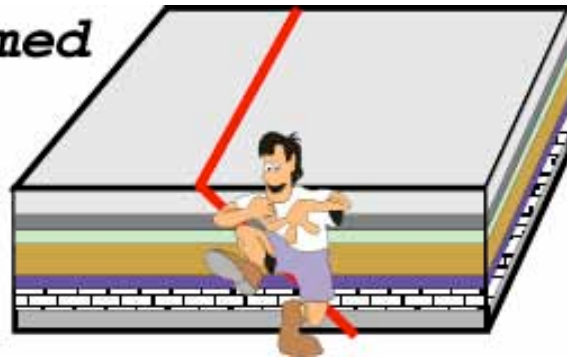


Undeformed
Layers



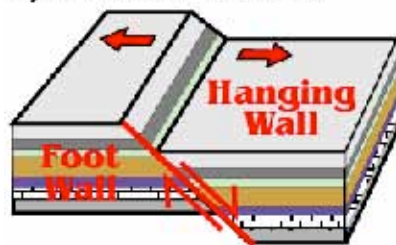
Undeformed
Layers



Undeformed
Layers



a) Normal Fault



Undeformed
Layers

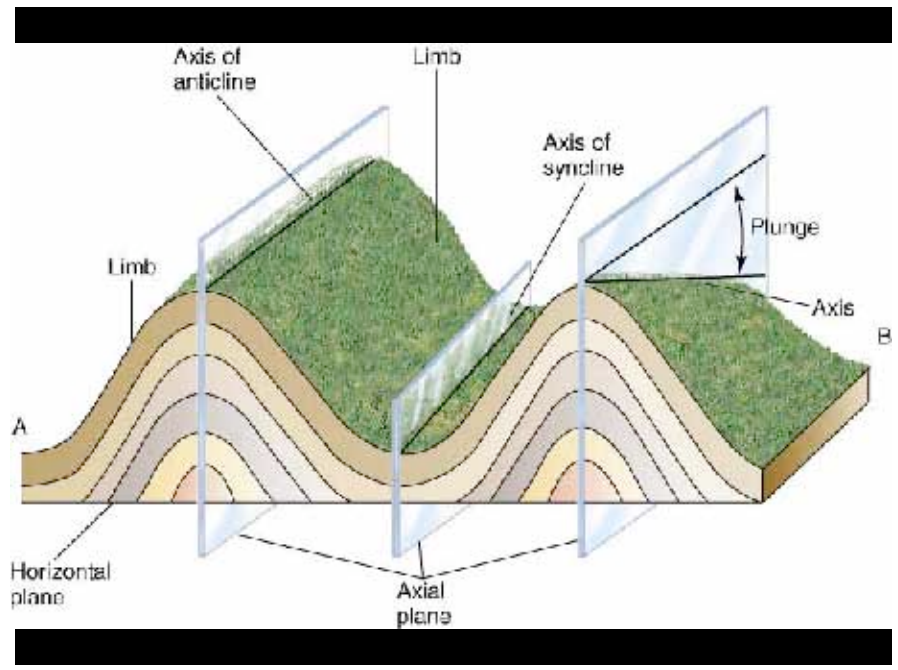
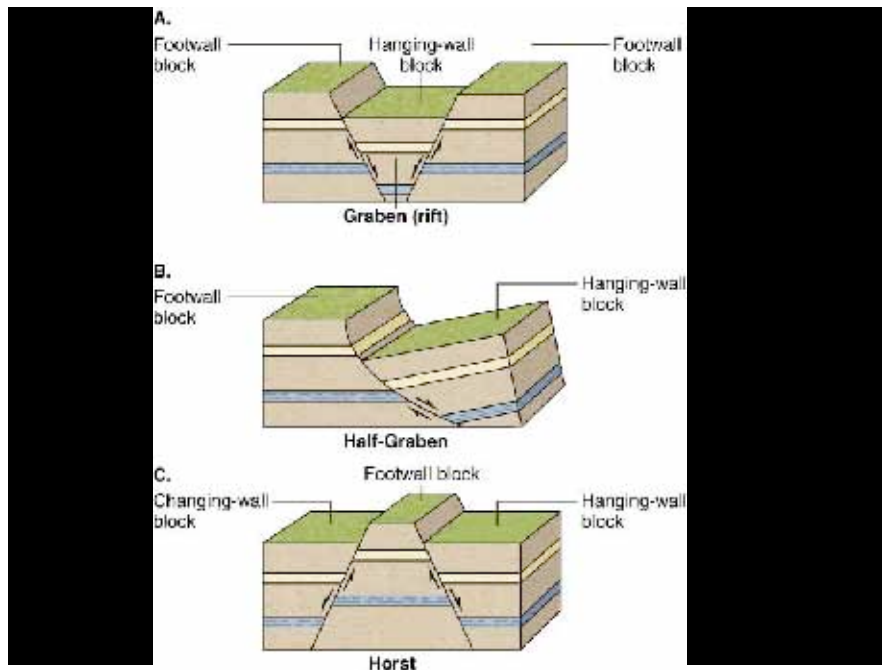
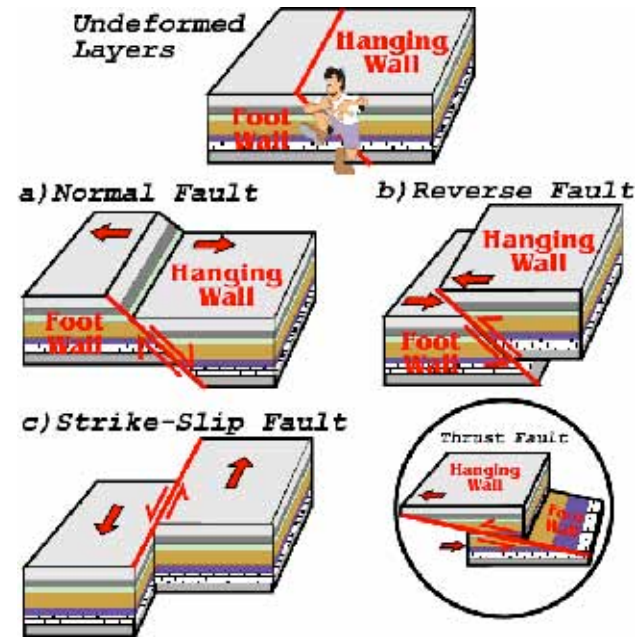
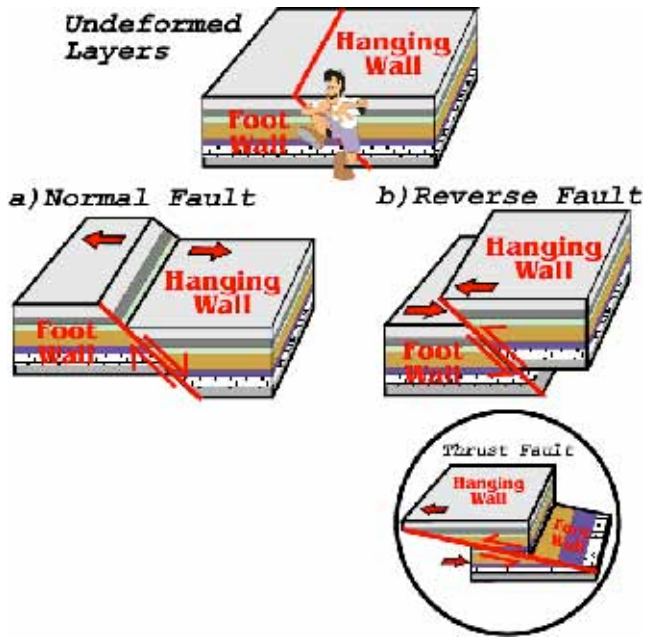


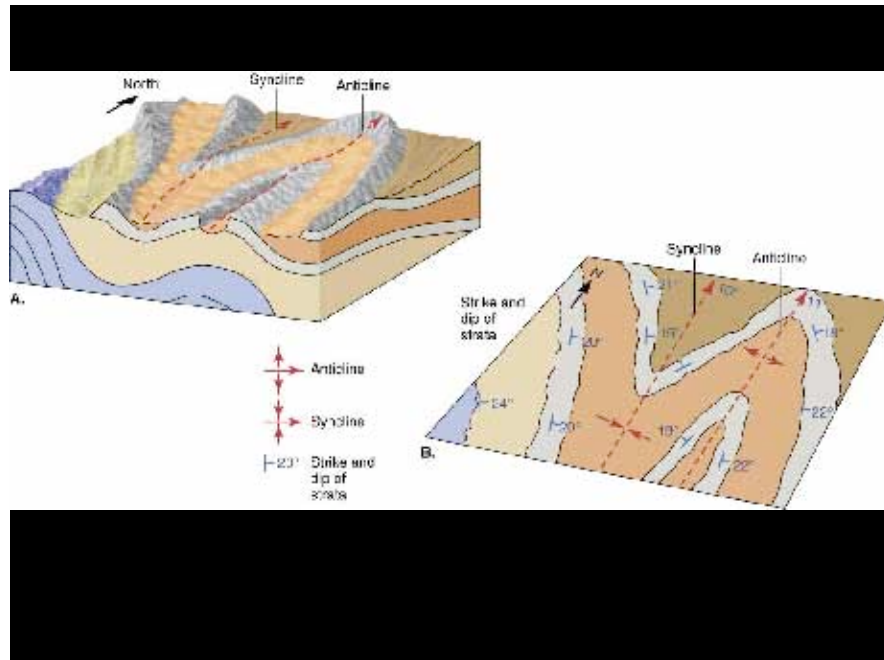
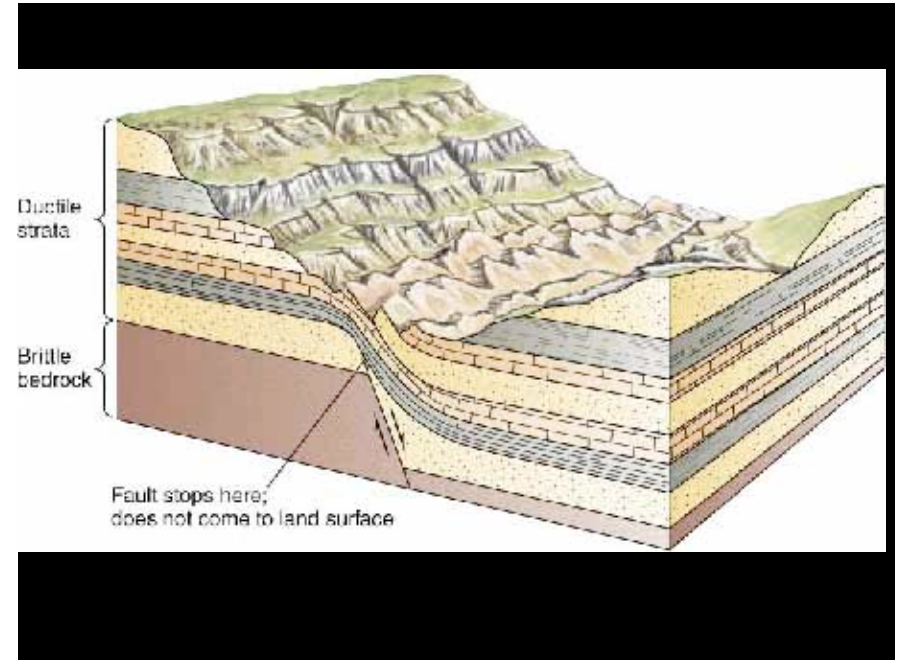
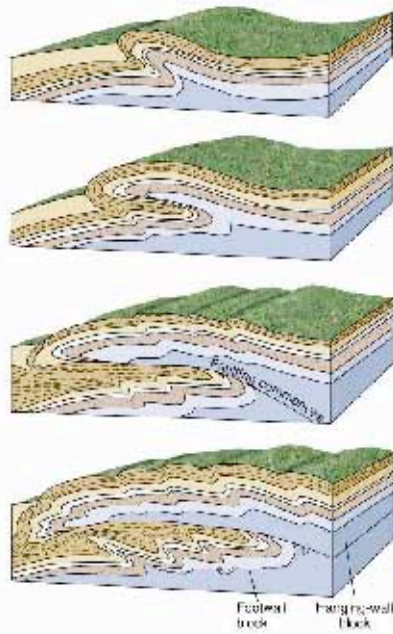
a) Normal Fault

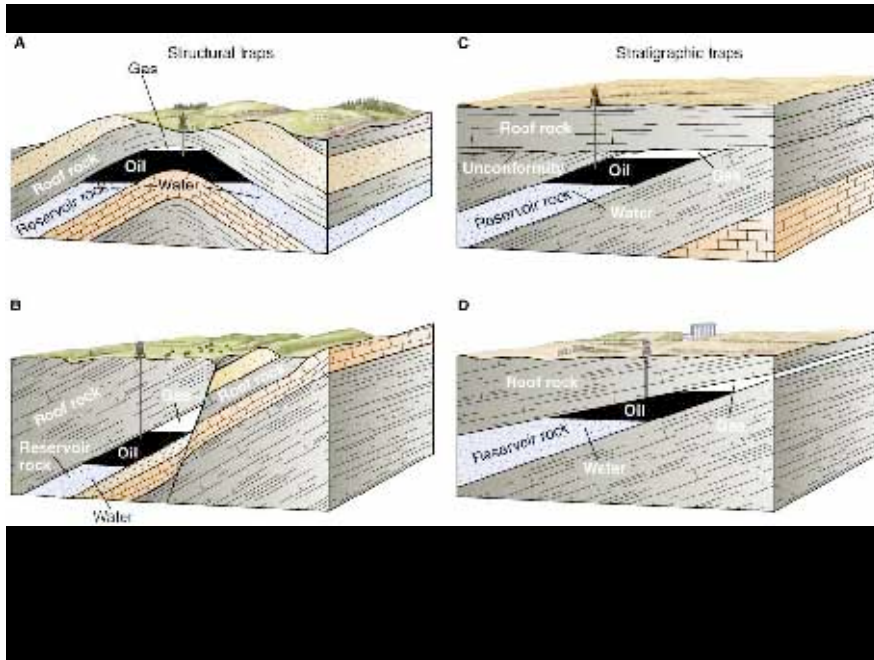


b) Reverse Fault

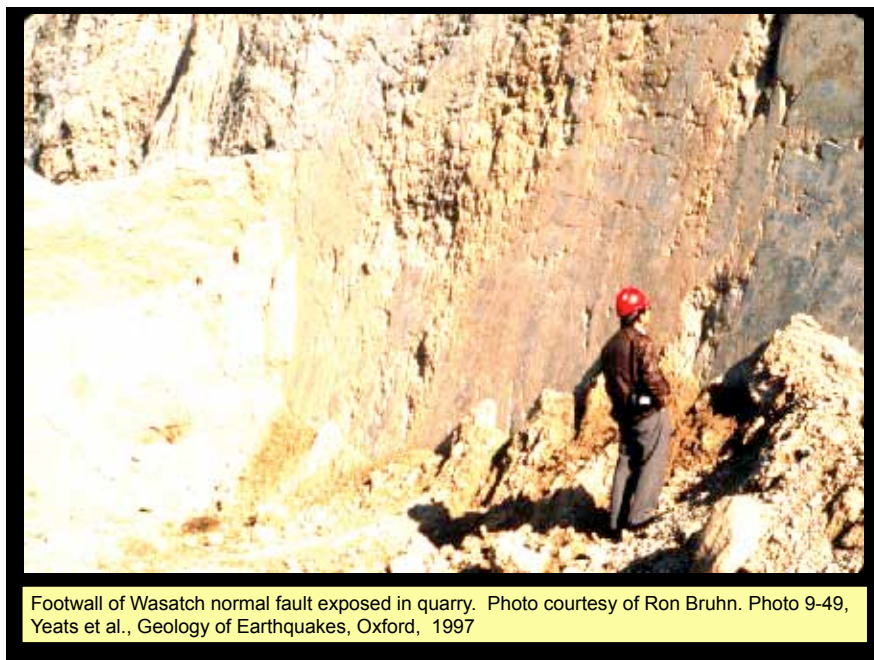








Fault breccia, San Andreas fault zone, Leona Valley, CA (RSY)

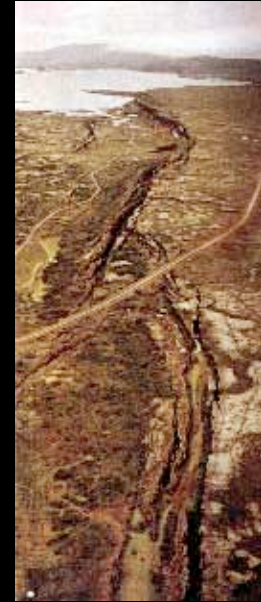


Footwall of Wasatch normal fault exposed in quarry. Photo courtesy of Ron Bruhn. Photo 9-49, Yeats et al., Geology of Earthquakes, Oxford, 1997

Normal Faulting



Normal fault scarp from 1983 Borah Peak (ID) event; Darell Cowan



Normal faulting on the MidAtlantic ridge at Thingvellir, Iceland. Photo courtesy of National Geographic



Normal fault scarp from Fairview Peak (NV) earthquake of 1954; Darrel Cowan



1983 Borah Peak earthquake normal fault scarp crossing Doublespring Pass Road. Note horizontal component. (RSY)



Faceted spurs and exposure of normal fault accompanying 1915 Pleasant Valley, Nevada, earthquake (nastri di faglia). Photo by Bob Wallace, see Fig. 9-52, Yeats et al 1997



1954 Dixie Valley normal-fault scarp at IXL Canyon, Nevada, showing modified free face and wash slope. People are standing in a fault graben; see Gilbert's diagram, Fig. 9-51c, Yeats et al., 1997 (RSY)

Reverse (thrust) Faulting

Reverse fault (Chelungpu fault) cutting running track Text, fig. 3-8b RSY

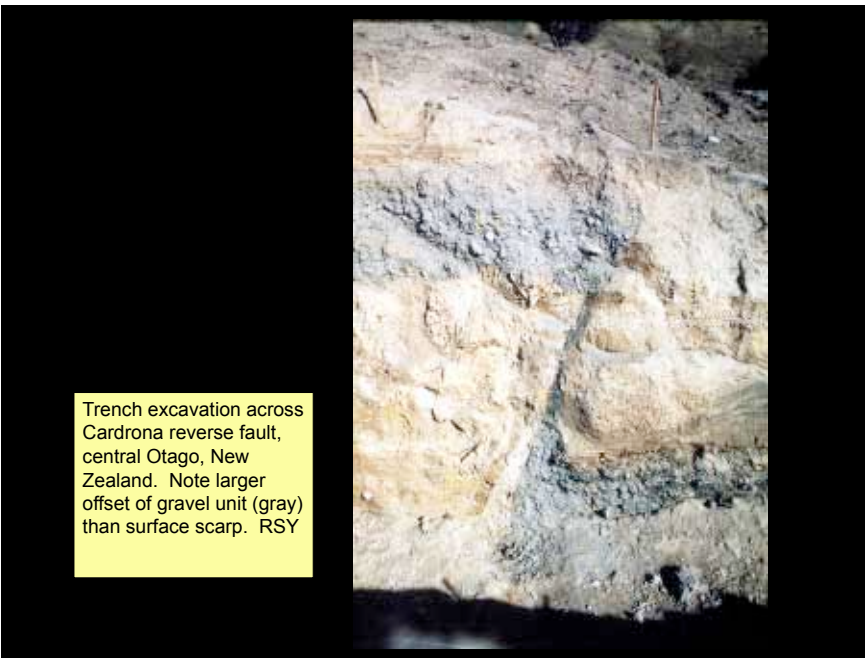




Ostler reverse fault in central Otago, South Island, New Zealand. Fig. 10-53, Yeats et al., 1997. Photo by Lloyd Homer, NZGS



San Cayetano reverse fault at Silverthread oil field, Ventura Basin, CA. RSY



Trench excavation across Cardrona reverse fault, central Otago, New Zealand. Note larger offset of gravel unit (gray) than surface scarp. RSY

Strike-slip Faulting



Rice paddy fields offset right laterally along Digdig fault (1990). T. Nakata



Road offset right laterally by Digdig fault in 1990 (T. Nakata)



Left-laterally offset spur from 1957 Gobi-Altai earthquake on the Bogd fault, Mongolia (RSY)



San Andreas fault in Carrizo Plain, California (RSY)



Offset stream along the San Andreas fault in Carrizo Plain, California (RSY)



Offset ditch at the Almaden Cienega Winery that sits on the San Andreas Fault south of Hollister CA



Right-lateral deformation of sidewalk in Hollister CA due to motion on the Calaveras Fault, a strand of the Sand Andreas system



Seattle Fault Restoration Point, Bainbridge Island – on hanging wall

Former beach (7 m above high tide)

Current beach



Seattle (reverse) Fault
Trench near I90 and Newport Way
1000 year old displacement

