

Salvaged Sites

This concept is about the visual and physical sites through out the northern coastline of Banda Aceh that survived the Tsunami. Many of these sites have become Icons of the event, they represent powerful symbols of hope. Many of the buildings that have survived are **Mosque**, the compelling images of these buildings among the scarred landscape are silent reminders of the power of nature.

salvaged sites +
debris as structures +
implementations +
phasing system +



financial



Salvaged Sites

The approach of this design is based on providing alternative methods of rebuilding. The tsunami left few resources, with the exception of a few standing buildings. Reclaiming some of these sites seemed appropriate it allowed several functions: collective rebuilding and community participation.

human



Debris

The notion of using recycled materials to rebuild and reclaim sites seemed appropriate in this situation, many reusable materials end up in landfills. Encouraging community members to use debris to rebuild public spaces seemed logical and an inexpensive method of rebuilding community spaces within a shorter time frame. By using debris from the Tsunami in refurbished and new structures, and integrating new uses and functions the materials themselves become Everyday Memorials.

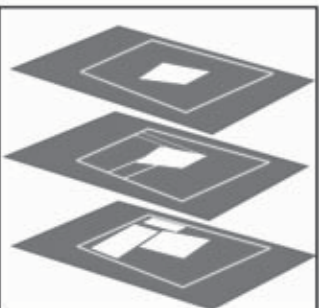
social



Implementation

The implementation of projects of this scale are based on collaboration, organization and community participation, it enables community building. Providing and outlining how systems work with one another is fundamental in providing a realistic time frame and developing a phased system where goals can be met.

physical



Phasing System

The phasing system is over a five year period with the main goal being the evolution of the conceptual site into physical spaces built with debris.

Phase I: Anchor- focus is on the center node and the resources available

Phase II: Community Infrastructure focus on creating physical and social form to meet the communities needs.

Phase III: Re-establishing functions: focus on maintaining and managing community functions.

natural

Salvaged Sites

Debris Structures



The Tsunami left layers and layers of debris scattered through out Banda Aceh. Providing the people of Banda Aceh with examples of how debris has been used can perhaps provide them with new resource they can use and begin their procesof rebuilding much quicker based on the use of found materials. Its serves a dual function.



Tires

Car tires can be utilized in many creative manners that are applicable to the building of strutucres. Students from the Rurual Studio in Alhabama designed a wall made of earth rammed tires that was then stuccoed over. The tires gave an unusal form to the wall making it an interesting space to visit.



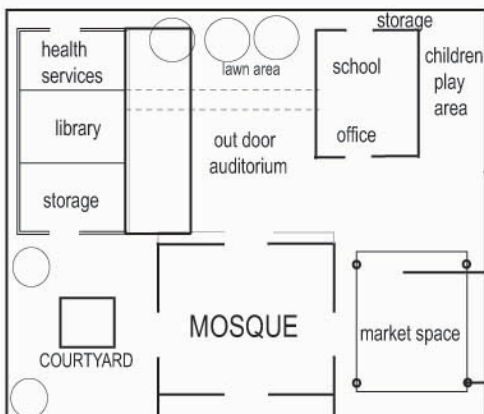
Concrete

Gabion cages can be filled with concrete rubble and rocks. Gabions are used as retaining walls, and are structurally sound. They are built of inexpensive materials, such as rebar and thick wire gauge. They can be used in this project for a multitude of things as well as being an efficient use of the debris scattered within close proximaty to the site.



Paper

The use of paper for structures isn't a new concept, however the Rural Studio has found new use for compressed card board boxes and heavier weight paper. The Paper bales are used in this example as insulating blocks in the student housing.



Examples Of Application On Site

Many elements in this plan can be built with recycled materials.

walls + gabions filled with rubble/ concrete
tire stuccoed walls

paving + recycled broken slabs of concrete

structural frames + recycled wood and bamboo

financial

human

social

physical

natural

for more information please visit <http://courses.washington.edu/larescue>

Salvaged Sites

This concept is about the visual and physical sites through out the northern coastline of Banda Aceh that survived the Tsunami. Many of these sites have become Icons of the event, they represent powerful symbols of hope. Many of the buildings that have survived are **Mosque**, the compelling images of these buildings among the scarred landscape are silent reminders of the power of nature.

salvaged sites +
debris as structures +
implementations +
phasing system +



financial



Salvaged Sites

The approach of this design is based on providing alternative methods of rebuilding. The tsunami left few resources, with the exception of a few standing buildings. Reclaiming some of these sites seemed appropriate it allowed several functions: collective rebuilding and community participation.



Debris

The notion of using recycled materials to rebuild and reclaim sites seemed appropriate in this situation, many reusable materials end up in landfills. Encouraging community members to use debris to rebuild public spaces seemed logical and an inexpensive method of rebuilding community spaces within a shorter time frame. By using debris from the Tsunami in refurbished and new structures, and integrating new uses and functions the materials themselves become Everyday Memorials.

Implementation

The implementation of projects of this scale are based on collaboration, organization and community participation, it enables community building. Providing and outlining how systems work with one another is fundamental in providing a realistic time frame and developing a phased system where goals can be met.

Phasing System

The phasing system is over a five year period with the main goal being the evolution of the conceptual site into physical spaces built with debris.

Phase I: Anchor- focus is on the center node and the resources available

Phase II: Community Infrastructure focus on creating physical and social form to meet the communities needs.

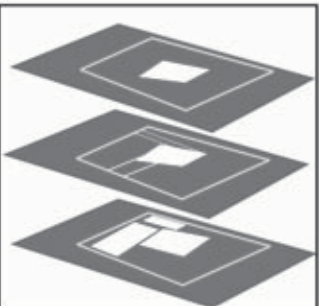
Phase III: Re-establishing functions: focus on maintaining and managing community functions.

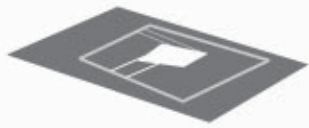
human

social

physical

natural

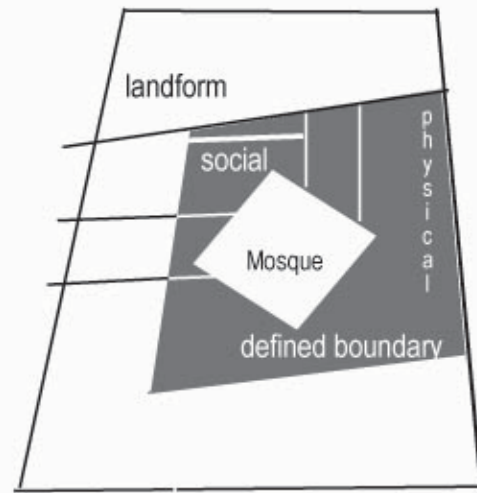




Salvaged Sites

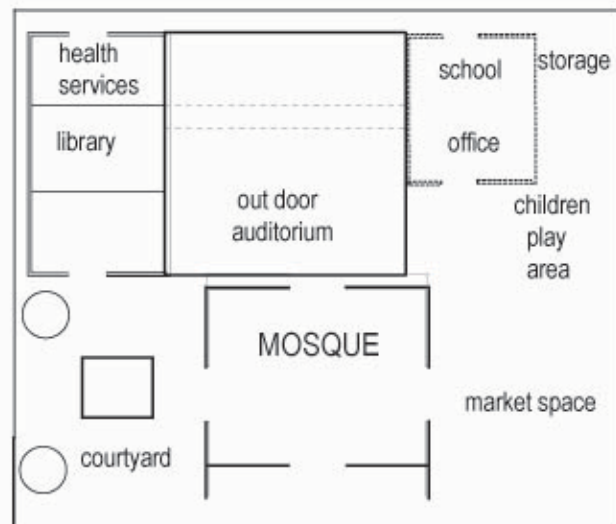
Phase II Community Infrastructure: The focus is on creating physical and social forms to meet the communities needs.

During this phase the site begins to transform into a physical and social series of spaces. The hierarchy of the spaces are determined by the communities need. The physical forms that develop take inspiration from the surrounding landscape. The overall concept for this phase is to allow the site to change through time, while developing the community infrastructure.



Change Through Time

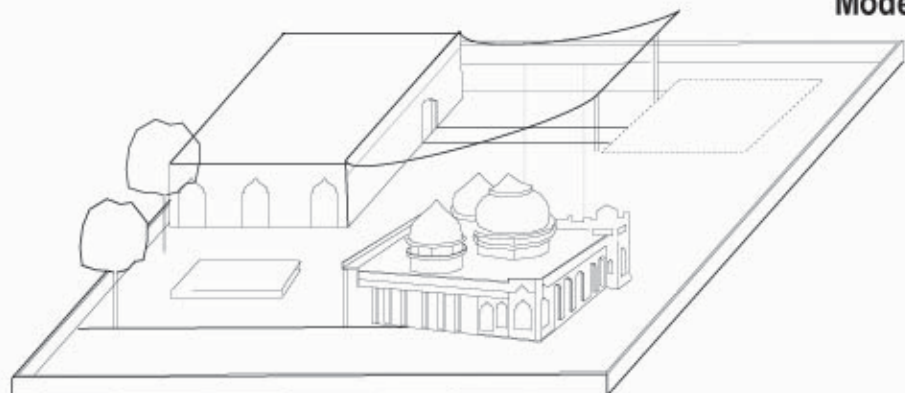
The conceptual plan is based from examples on other Islamic communities. The Islamic community considers their religion a way of life and there for, their community spaces must be able to sustain their needs. The Mosque always retains its hierarchy and postions itself at the center of the community. Other buildings and spaces are determined souly on their function. Retaining a level of flexability is essential to the site.



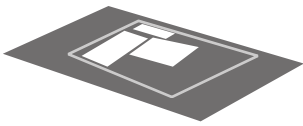
Conceptual Plan

Gabion walls

The model drawing in this phase illustrates the changes the site has undergone. Physical forms begin giving shape to the space and allow for more social interactions. The site begins to provide more functions for the community.



Model

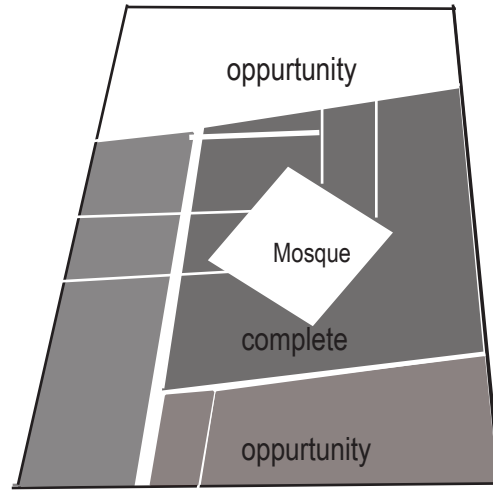


Salvaged Sites

Phase III Re-establishing Functions: Maintaining and managing site

Change Through
Time

The site has evolved from a single unit space into a boundary defined site with organized areas to meet a variety of needs. Through the phases the site has retained a level of flexibility and continues to maintain it. This flexibility allows for further growth through longer periods of time. The design allows for exterior opportunities once the functions of the site are established.

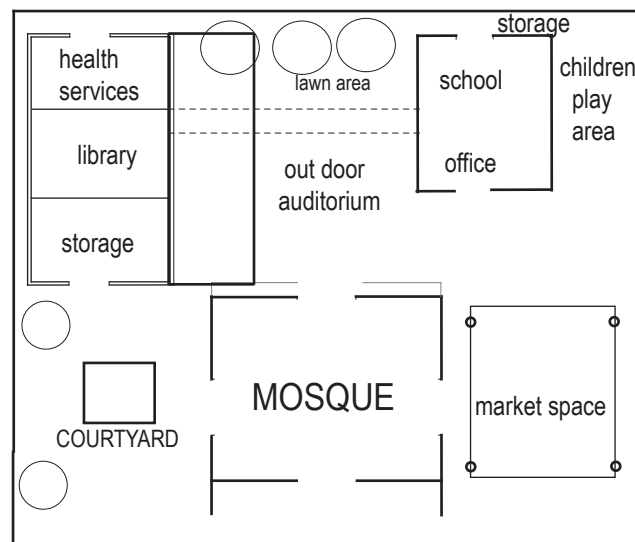


financial

human

Conceptual
Plan

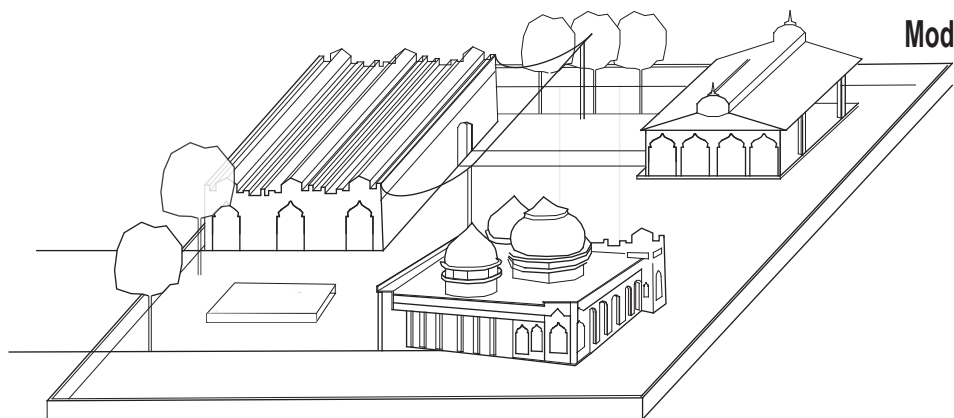
The conceptual plan in this phase is focused on how certain spaces relate to one another and how their functions influence other areas. For example: the outdoor auditorium can be utilized by the all three buildings surrounding it or it can be a space for families to enjoy a picnic.



social

Model

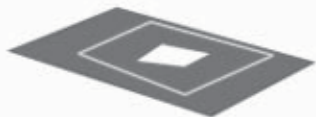
The model drawings represent the three dimensional quality of the site. Although the site has been redesigned with recycled materials it has retained its architectural character.



physical

natural

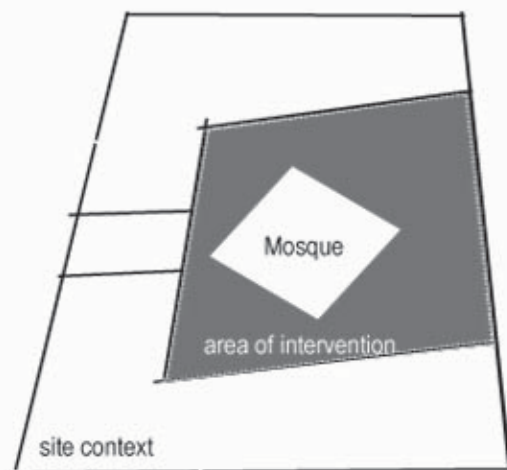
for more information please visit <http://courses.washington.edu/larescue>



Salvaged Sites

Phase I Anchor: The focus of this phase is establishing an anchor, establishing the center of the site as the hierarchy

The concept of **salvaged sites** focuses on establishing an anchor on the site that the rest of the space can develop from. The aspiration for this project is outward growth. It seems appropriate that the initial rebuilding be focused on the Mosque and the immediate area around it.



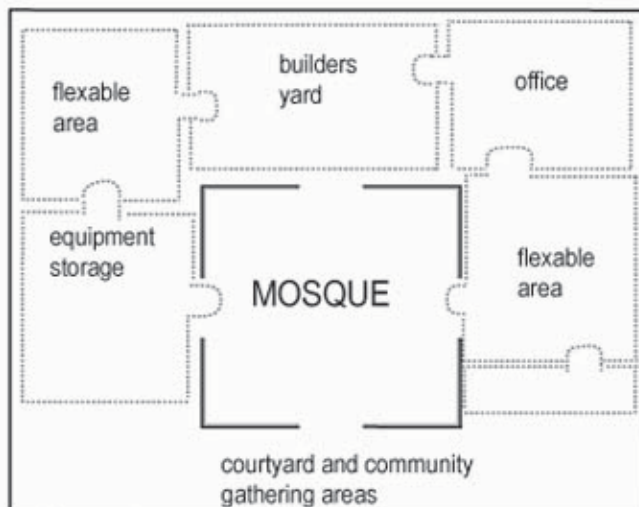
Change Through Time

financial

human

Conceptual Plan

The **conceptual plan** is used to illustrate the importance of the Mosque and the potential growth around it. The enclosed walls around the Mosque are part of the Islamic culture. It is a symbolic reference to a way of life. Establishing a defined border around the site also provides the community with a clear understanding of the amount of space they have to grow into. During this phase much of these areas will be cleaned and organized into a series of builder yards with equipment storage.

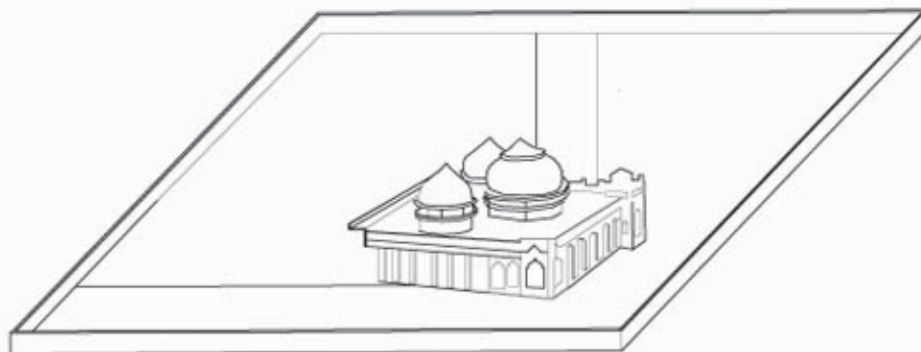


Gabion walls

social

Model

The simplicity of this model is to express visually the change that will occur through the three phases. This phase begins with the primary focus being the Mosque and defined boundaries.

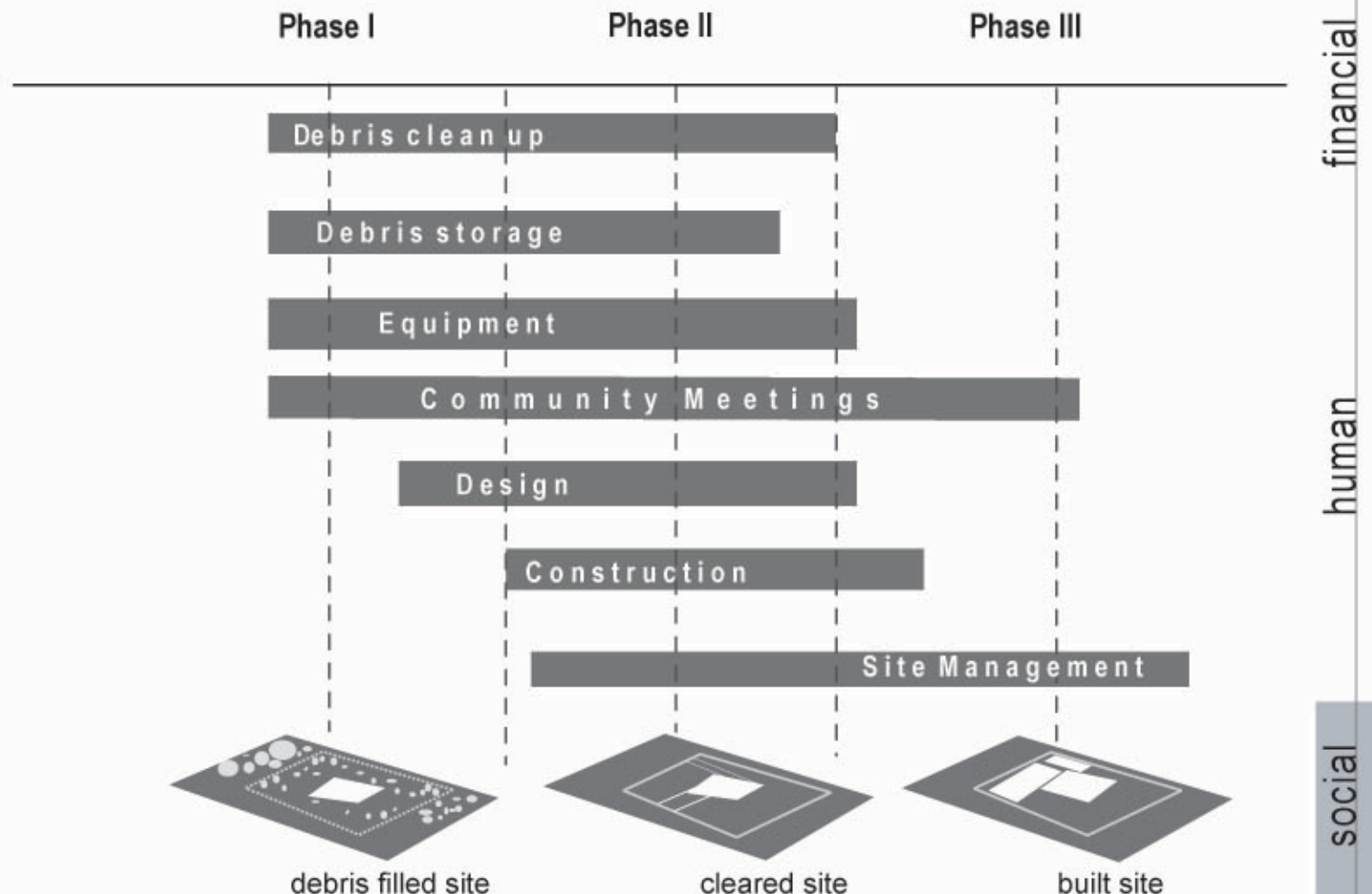


physical

natural

Salvaged Sites

Implementation : The implementation of this project is community driven



Site Goal + To gain local community participation and present alternative methods of rebuilding community spaces. By providing a phased system the whole project is spread out through a considerable amount of time, based on the community's needs and financial resources.

Schedule + This schedule is an example to illustrate what type of work and community planning must be done during each phase. Each schedule and task should be site specific.

Management + Allow site to adapt and conform to community's needs. While reflecting on the original concept and identity.