

FRONTLINE

FRONTLINE: "Poisoned Waters"

[View Online](#) | [Learn More](#)

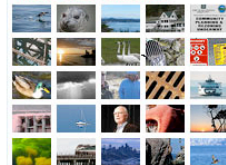
More than three decades after the Clean Water Act, two iconic waterways—the great coastal estuaries Puget Sound and the Chesapeake Bay—are in perilous condition. FRONTLINE correspondent Hedrick Smith examines the rising hazards to human health and the ecosystem, and why it's so hard to keep our waters clean.

- Partnership Information
- Action Agenda Center
- Leadership Council
- Ecosystem Coordination Board
- Science Panel
- Around the Sound
- Salmon Recovery
- ECO Net

Stay Informed!

Sign-up to receive the Partnership's E-newsletter.
[SUBSCRIBE NOW](#)

"Silent Crisis" Flickr Photo Challenge



[Click here to view photos and learn how to participate.](#)

[flickr](#) Find us on Facebook

[think](#) [myspace.com](#)

[twitter](#)

[YouTube](#)

Partnership News

Pacific Coastal Salmon Recovery Fund (PCSRF) Reinstated in President's 2010 Budget
(Kitsap Sun)
[READ MORE](#)

A Symposium: Toward a Healthy Puget Sound
[WATCH ONLINE](#)

Partnership approves \$11 million in critical recovery, protection projects
[READ MORE](#)

Leadership Council meeting in Tacoma on May 27, 28
[READ MORE](#)

Science Panel meeting May 7, 8 in Seattle
[READ MORE](#)

Low Impact Development

Bioretention Soil Mix Review and Recommendations for Western Washington, a Technical Memorandum
[LEARN MORE](#)

Stormwater and Low Impact Development in Puget Sound
[LEARN MORE](#)

Partnership Helps 13 Local Governments Add LID to Development and Stormwater Codes The 2008 LID Local Regulation Assistance Project recommendations are completed!
[LEARN MORE](#)

Upcoming Events

Sound Conversations at the Seattle Aquarium with Jeff Renner lecture series
[REGISTER ONLINE](#) | [LEARN MORE](#)

Sea Cinema Film Festival
The Olympia Film Society and People For Puget Sound are sponsoring a two-day SEA CINEMA festival at the Capitol Theater in Olympia.
[LEARN MORE](#)

Employment Opportunity

The Puget Sound Partnership is seeking a qualified candidate for the position of Technology & Systems Administrator.

Photo of the Week



Pt. Robinson, Maury Island Low Tide Festival. Photo courtesy of citywalker, Lydia Heard, Puget Sound "Silent Crisis" Flickr group. [Learn more about the high risk stormwater poses to Puget Sound's health.](#)

Federal Economic Stimulus Information

Updated 04.08.09 NOAA federal stimulus funds for habitat restoration

Puget Sound Partnership led the State of Washington's review of habitat restoration projects that may be eligible for NOAA stimulus funds and that strongly advance the priorities of the Puget Sound Action Agenda. The process for identifying state priority projects and the final list of priority projects is available. [MORE INFO](#) | [DOWNLOAD](#)

More information on the Federal Economic Recovery Program and what it means for Puget Sound Recovery
[MORE INFO](#)

The latest information on Federal agencies' economic recovery funding criteria and process
[MORE INFO](#)

Partnership's list of potential economic stimulus projects - updated 3/11/09 (PDF)
[DOWNLOAD](#)

Partnership Legislative Agenda

Puget Sound restoration fares well in difficult legislative session
[PRIORITIES FACT SHEET](#) | [FUNDING DOCUMENT](#)

Notice from Governor Chris Gregoire on the 2009-2011 Budget

THREATS TO THE SOUND

The Puget Sound Partnership "action agenda" breaks down ecological threats to the Sound into six broad categories:

- **Habitat alteration:** From clearcutting in the mountains to subdivisions in the foothills to construction of erosion-control barriers along the shoreline.
- **Pollution:** Sources include cars, sewers and the filthy water that courses off streets and other hard surfaces after heavy rains.
- **Disruption of water supplies:** Because of development and human use, the amount of fresh water entering the Sound has been cut by nearly 20 percent over the past half-century.
- **Invasive species:** Non-native plants and animals that find their way to the Sound can overwhelm natives in the absence of their natural enemies.
- **Artificial propagation of fish, shellfish and plants:** Hatcheries can reduce the genetic diversity of salmon and have other bad effects. Aquaculture of shellfish and plants can introduce pollution and non-native species.
- **Catching fish:** Legal as well as illegal taking of fish has left some populations depressed.

Originally published Monday, June 1, 2009 at 12:00 AM

Comments (37) E-mail article Print view Share

Raw sewage pouring into harbor off Bainbridge Island

A major sewage pipe on Bainbridge Island continued to spill tens of thousands of gallons of raw waste into Eagle Harbor on Sunday, a day after rupturing, and a city official said the line can't be fixed until Tuesday morning.

By Drew DeSilver
Seattle Times staff reporter

A major sewage pipe on Bainbridge Island continued to spill tens of thousands of gallons of raw waste into Eagle Harbor on Sunday, a day after rupturing, and a city official said the line can't be fixed until Tuesday morning.

The pipe, which carries about three-fifths of the city's sewage from a pump station to the treatment plant near Hawley Cove Park, was spewing more than 1,400 gallons an hour.

A passer-by reported the spill about 3 p.m. Saturday, but crews couldn't inspect the pipe — buried beneath the beach on the north shore of Eagle Harbor — until low tide Sunday morning, said Lance Newkirk, deputy director of the city's Public Works Department.

When they did, they found more extensive corrosion than expected on the 30-year-old iron pipe.

"It's getting near the end of its useful life," Newkirk said.

Newkirk estimates about 70,000 gallons of sewage spilled between the initial report and 9 a.m. Sunday, when the crew finished putting a temporary metal band on the pipe. The band should prevent any solid matter from spilling and cut the flow of liquid effluent to 35,000 gallons per 24-hour period.

At that rate, as much as 140,000 gallons may have spilled by Tuesday morning, when Newkirk said he expects the pipe to be repaired completely.

The pipe runs about four feet underneath the beach, about 1,000 feet from the ferry terminal. It's underwater except during low tides; crews had to dig it up Sunday morning to examine the damage.

Repair work probably will start around 5 a.m. Tuesday and take about four hours, Newkirk said. During that time, pump trucks will divert sewage from the damaged section of pipe.

The Kitsap County Health District has posted signs at the beach to warn people of the spill, and will test the water for fecal bacteria levels.

The spill will increase the nutrient load on an already ecologically stressed body of water, said Cara Cruickshank, director of EcoSolutions, a Bainbridge Island nonprofit.

"This is really upsetting," she said. "I'm not surprised, though; the infrastructure out here is badly in need of updating."

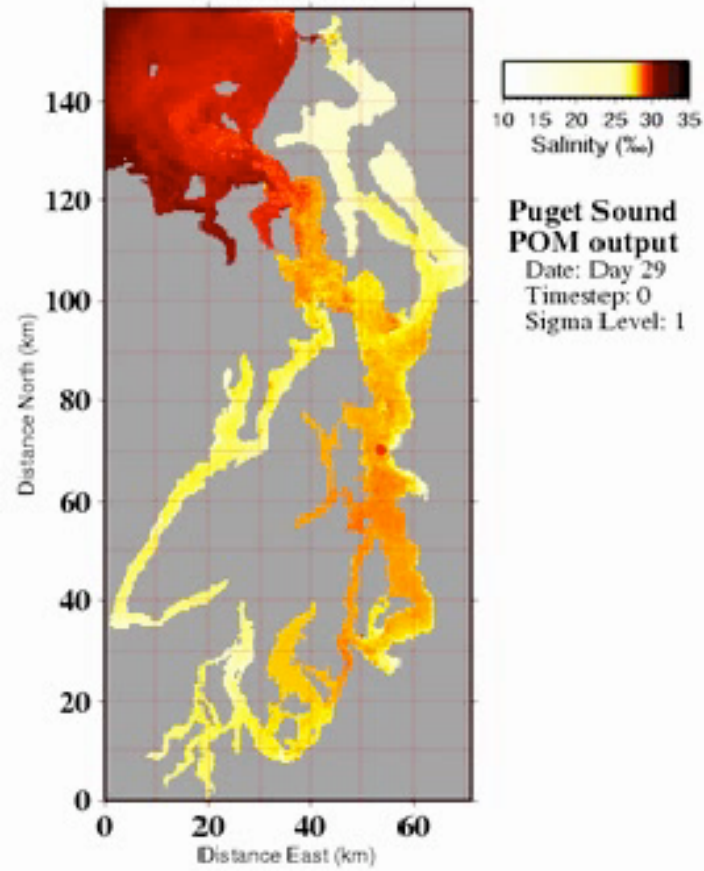
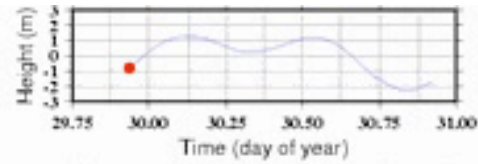
There is already an active Superfund site at the former Wyckoff wood-treatment plant and the adjacent water, which are contaminated with creosote and its breakdown products.

Leaking septic tanks also contaminate the waters of Eagle Harbor, Cruickshank said, and even the treated sewage from the plant contains nitrogen and other nutrients that promote excess algae and seaweed growth.

On top of that, she said, the harbor doesn't have good "tidal flow," meaning contaminants in the water aren't flushed or diluted regularly.



Eagle Harbor





pugetsound.org

explore

learn

act

connect

join

about

news

site map | events | resources | pressroom | donate | home

search



We get results: The goal to achieve a healthy Sound by 2020 in now a state law.

you are here: [home](#) → [pressroom](#) → [puget sound quick facts](#)

in this section...

- + [Press Releases](#)
- + [Issue Backgrounders](#)
- + [Puget Sound Quick Facts](#)

our programs...

- + [Education](#)
- + [Science & Restoration](#)
- + [Policy & Activism](#)

how you can help...

- + [Donate Today](#)
- + [Volunteer](#)
- + [Take Action](#)

Puget Sound Quick Facts



Where is Puget Sound?

People For Puget Sound considers the land and waters in the northwest corner of Washington State --from the Canadian border on the north to the Pacific Ocean on the west including Hood Canal-- as the Puget Sound region.

Some would argue that Puget Sound is actually only the waters south of Admiralty Inlet as explored and named by Captain George Vancouver over 200 years ago. We like to think of the Puget Sound region as Puget Sound, Hood Canal and the Straits of Juan de Fuca, Haro and Rosario. The Puget Sound Estuary.

[See the Puget Sound Action Team's "About Puget Sound" section.](#)

This is the Puget Sound estuary-- where water that falls on the Cascade and Olympic Mountains flows to meet the marine waters of the Sound--

- + Total area of land and water: 2,458 square miles
- + Total length of marine shorelines: approx. 2,500 miles
- + Average depth: 450 feet
- + Deepest point: 930 feet
- + Number of streams and rivers flowing to the Sound: approx. 10,000
- + Population: approximately 3.5 million (2000 census)
- + Number of counties: 12
- + Number of tribes: 15
- + Annual number of cargo vessels in the Sound: 2,451 (2006)
- + Number of boats registered to residents living on or near the Sound: 168,374 (2003)
- + Number of state parks on the Sound: 35
- + Number of species of marine fish: 200
- + Number of species of marine mammals: 26
- + Number of species of marine seaweeds and sea grasses: 625
- + Number of species of marine birds: 200
- + Number of species of invertebrates: 3,000 and still counting

<http://www.pugetsound.org/pressroom/puget-sound-quick-facts>



2020 Action Agenda

Action Areas

Accountability

Meetings

Habitat Protection

Habitat Restoration

Toxic Pollution

Human / Animal Waste

Stormwater management

Water Supply

Species / Biodiversity / Salmon

Education

Science

Puget Sound Conservation and Recovery Plan

Hood Canal

Climate Change

PHOTO (above): Deception Pass Bridge. | Shutterstock.com / Natalia Bratslavsky

Action Agenda: Roadmap to Restoration

Across the Puget Sound region, the [Puget Sound Partnership](#) is mobilizing communities, agencies and organizations to work together to create a comprehensive Action Agenda to restore Puget Sound.

The Action Agenda is the roadmap for Puget Sound restoration and protection efforts for years to come. It will tell us what a healthy Puget Sound looks like, and identify and set priorities for what work needs to be accomplished. And because it will be developed by the region, it will hold the region accountable for achieving a healthy Puget Sound.

- [Our Guiding Principles](#)
- [What is the process to create the Action Agenda?](#)
- [We need your help](#)
- [How can agencies and groups participate and contribute?](#)
- [Action Agenda documents](#)

Work to build the Action Agenda is getting under way with numerous opportunities to get involved upcoming. Guiding its development are some core principles that support the process:

Our Guiding Principles

- You are an essential participant in the process.
- Collaboration and cooperation across sectors and interests is vital.
- The Action Agenda creation process will be clear and transparent.
- Public engagement is critical.
- The process should include a scientific review of proposed actions.
- We will work with existing organizational and decision-making structures rather than create new processes.

[^ Top](#)

What is the process to create the Action Agenda?

The Action Agenda will be developed by answering three key questions with extensive opportunities for input, dialog and involvement for everyone interested in restoring Puget Sound.

1. What is the status of and what are the threats to Puget Sound's health?
2. What is a healthy Puget Sound ecosystem?
3. What actions must we take to move from where we are today to a healthy Puget Sound by 2020?

Action Agenda Work Plan

To answer each key question, the Partnership will conduct a [four-phase community involvement process](#). Each phase will engage scientific and policy experts, agencies and governments, and community groups and the public. Everyone will have a chance to participate.

Phase I. Synthesize existing data and information:

- Status of Puget Sound health
- Indicators to measure ecosystem health
- Current programs and efforts, opportunities (capital, policy, education/outreach, science)

Phase II. Conduct a gap analysis to highlight what more is needed

Phase III. Identify priorities, actions, assignments:

- o Ecosystem (capital, policy, education/outreach, science)
- o Local (capital, policy, education/outreach, science)

Phase IV. Roll up, review draft Action Agenda, and approve



2020 Action Agenda: Keeping us on track for the next generation of Puget Sound residents. | Shutterstock.com/Pascal Wowak

HIGHLIGHTS

Advanced worked conducted for the Action Agenda. [>> Read more](#)

[Puget Sound Water Quality Management Plan | PDF](#)

[2007-2009 Puget Sound Conservation and Recovery Plan | PDF](#)